

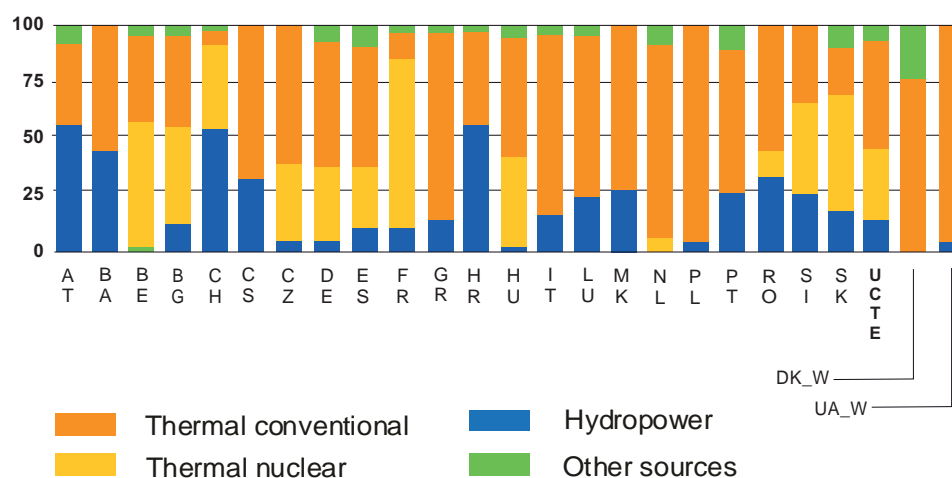
# SYSTEM INFORMATION

3

**<sup>1</sup> All values of production and consumption are calculated to represent 100% of the national values**

	Page	
T1	Net electricity generation and its structure in 2006	128
T2	Development of net production of electricity	129
T3	National consumption and maximum load in 2006	130
G1	Highest and lowest load on 3rd Wednesday in 2006	131
T4	Development of power produced in parallel operation	132
G2	Physical energy flows in 2006	133
T5a	Development of physical exchanges on tie lines	134
T5b	Scheduled exchanges	135
G3	Balance of simultaneous power flows across the frontiers	136
T6	Development of the simultaneous power flows across the frontiers of the UCTE countries	140
T7	Maximum output capacity on 31 December 2006, 2005 and 2001	141
T8a	UCTE System Adequacy Retrospect 2006, Power Data	142
T8b	UCTE System Adequacy Retrospect 2006, Energy Data	143
G4	Simplified diagram of the interconnected network	144
G5	Monthly electricity exchanges across frontiers	146
G6	Load flows across frontiers	148
T9	Characteristics of the cross-frontier transmission lines	150
T9a	Unavailability of international tie lines - Overview	159
T10	Inventory of transmission network installations	164
T11	Number of circuits < 220 kV, 220 kV and 380 kV on cross-frontier transmission lines	166
T12	Main grid developments	167
T13	System reliability	170
T14a	Inventory of thermal units $\geq 10$ MW per country as of 31 December 2006	182
T14b	Commissioning and decommissioning of major thermal power units in 2006	183
T15a	Inventory of hydro power units $\geq 1$ MW as of 31 December 2006	184
T15b	Commissioning and decommissioning of hydro power units in 2006	185

<sup>2</sup> The Bulgarian data of production and consumption are gross values.



Country	Thermal nuclear		Thermal conventional		Hydro-production		Other renewable		of which wind	Not clearly identifiable		Total TWh
	TWh	%	TWh	%	TWh	%	TWh	%	TWh	TWh	%	
AT	-	-	22,5	35,7	34,1	54,1	-	-	-	6,4	10,2	63,0 <sup>2</sup>
BA	-	-	7,5	56,0	5,9	44,0	-	-	-	-	-	13,3
BE <sup>3</sup>	44,3	54,4	32,6	40,0	1,6	2,0	2,9	3,6	0,3	-	-	81,4 <sup>2</sup>
BG	19,0	43,1	20,5	46,6	4,5	10,2	-	-	-	-	-	43,9 <sup>2</sup>
CH	26,2	42,2	2,3	3,7	32,6	52,4	1,1	1,7	0,01	-	-	62,1 <sup>2</sup>
CS	-	-	28,8	69,7	12,5	30,3	-	-	-	-	-	41,2 <sup>2</sup>
CZ	24,5	31,5	50,0	64,2	3,2	4,2	0,2	0,2	0,05	-	-	77,9 <sup>2</sup>
DE <sup>4</sup>	158,7	27,0	359,1	61,1	24,0	4,1	46,0	7,8	32,3	-	-	587,8 <sup>2</sup>
ES	57,4	21,4	153,8	57,4	29,0	10,8	28,0	10,4	22,6	-	-	268,2 <sup>2</sup>
FR	428,7	78,1	54,0	9,8	60,9	11,1	5,5	1,0	2,2	-	-	549,1
GR <sup>5</sup>	-	-	42,7	84,6	6,4	12,8	1,3	2,6	1,2	-	-	50,4 <sup>2</sup>
HR	-	-	5,3	46,3	6,1	53,5	0,02	0,2	0,02	-	-	11,4 <sup>2</sup>
HU	12,7	37,9	18,7	56,1	0,2	0,6	1,2	3,5	0,04	0,7	2,0	33,4 <sup>2</sup>
IT	-	-	250,7	83,1	42,5	14,1	8,4	2,8	3,2	-	-	301,5 <sup>2</sup>
LU	-	-	3,2	75,9	0,9	21,2	0,1	2,9	0,1	-	-	4,2
MK	-	-	4,9	75,3	1,6	24,7	-	-	-	-	-	6,6 <sup>2</sup>
NL	3,3	3,5	84,3	89,0	0,1	0,1	7,1	7,5	2,7	-	-	94,7 <sup>2</sup>
PL	-	-	145,7	97,9	2,8	1,9	0,3	0,2	0,2	-	-	148,9 <sup>2</sup>
PT	-	-	30,0	65,2	11,2	24,4	4,8	10,5	2,9	-	-	46,0 <sup>2</sup>
RO	5,2	9,1	34,2	59,6	18,0	31,3	-	-	-	-	-	57,4 <sup>2</sup>
SI	5,3	40,2	4,7	36,0	3,1	23,8	-	-	-	-	-	13,1
SK	16,6	57,3	5,4	18,6	4,4	15,2	0,01	0,03	0,01	2,6	8,9	29,0 <sup>2</sup>
<b>UCTE</b>	<b>801,9</b>	<b>31,1</b>	<b>1360,7</b>	<b>52,5</b>	<b>305,6</b>	<b>11,8</b>	<b>106,8</b>	<b>4,1</b>	<b>67,9</b>	<b>9,7</b>	<b>0,4</b>	<b>2584,7<sup>2</sup></b>
DK_W	-	-	20,1	76,6	0,03	0,1	6,1	23,3	4,7	-	-	26,2 <sup>2</sup>
UA_W	-	-	8,3	98,5	0,1	1,5	-	-	-	-	-	8,4 <sup>2</sup>

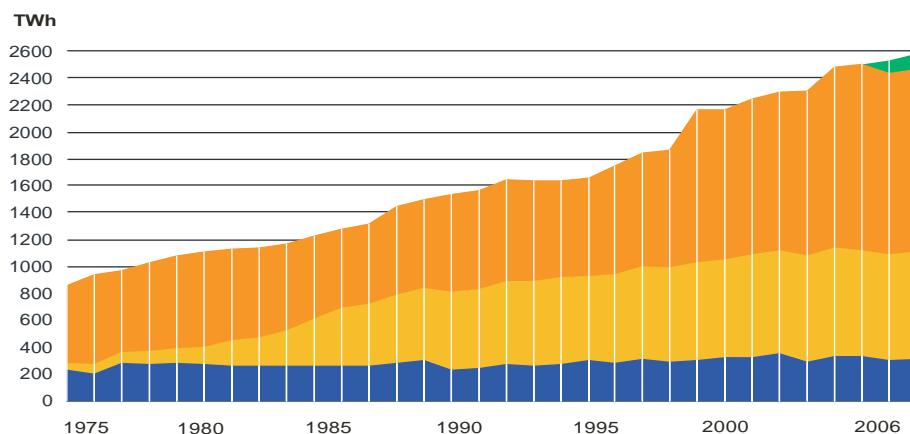
<sup>1</sup> All net production values are calculated to represent 100% of the national values. The percentage as referred to the national values are specified on page 10 and page 11 of this Yearbook.

<sup>2</sup> Including deliveries from industry

<sup>3</sup> The reported figures are best estimates based on actual measurements and extrapolations.

<sup>4</sup> Calculated values

<sup>5</sup> The values for Greece refer to the interconnected system and not to the whole country.



Year	Hydro power	Thermal nuclear	Thermal conventional	Other sources <sup>2</sup>	Total TWh
	TWh	TWh	TWh	TWh	
1975	222,9	50,0	585,4		858,3
1976	191,2	69,5	669,1		929,8
1977	276,2	82,2	610,4		968,8
1978	266,1	97,4	659,9		1023,4
1979	275,4	110,6	691,3		1077,3
1980	263,4	133,9	712,1		1109,4
1981	256,4	191,0	678,4		1125,8
1982	258,0	211,2	665,5		1134,7
1983	255,9	258,8	653,3		1168,0
1984	257,0	348,5	617,3		1222,8
1985	255,2	426,3	597,3		1278,8
1986	253,3	464,4	593,6		1311,3
1987	264,9	483,0	607,7		1442,1
1988	282,9	514,6	597,0		1483,5
1989	216,2	551,6	669,2		1528,7
1990	222,8	558,5	690,6		1565,9
1991	246,2	579,6	701,7		1625,0
1992	240,2	591,2	689,5		1618,0
1993	251,2	616,9	664,9		1630,0
1994	278,8	606,1	674,7		1657,5
1995 <sup>3</sup>	265,8	627,7	732,8		1740,2
1996	284,6	657,2	770,1		1841,4
1997	272,0	665,2	792,1		1863,7
1998 <sup>4</sup>	284,4	689,5	1057,7		2169,8
1999	302,0	705,5	1053,0		2164,0
2000	305,1	733,8	1093,4		2246,4
2001	331,6	744,4	1129,8		2291,0
2002	276,1	757,6	1187,6		2303,8
2003 <sup>5</sup>	307,4	787,4	1305,7		2484,6
2004	319,8	798,6	1386,3		2525,2
2005	292,4	792,6	1349,1	98,2	2540,4
2006	305,6	801,9	1354,6	115,1	2584,7

<sup>1</sup> Values of detailed production are national values; total net production values are calculated to represent 100% of the national values.

<sup>2</sup> Before 2005, the information on other renewable energy sources was collected in a different manner. Some countries added them to thermal conventional, some considered them as the part of not represented in the figures (through the factor "representativity").

<sup>3</sup> As of September 1995 total German values

<sup>4</sup> Including values of CZ, HU, PL, SK as of 1998

<sup>5</sup> Including values of RO, BG as of 2003

## National electricity consumption

Country	GWh	$\Delta$ % <sup>1</sup>	repr % <sup>2</sup>	Country	GWh	$\Delta$ % <sup>1</sup>	repr % <sup>2</sup>
AT	66500	5,0	100	HU	40629	3,2	100
BA	11109	-0,7	100	IT	337796	2,2	100
BE	89900	2,2	100	LU	6616	5,8	100
BG	35672	-1,2	100	MK	8377	3,6	100
CH	63223	0,3	100	NL	116179	1,3	100
CS	42262	1,5	100	PL	136498	4,3	100
CZ	64319	2,5	100	PT	50705	1,7	97
DE	559078	0,5	100	RO	53016	2,1	100
ES	259679	2,7	98	SI	13331	4,2	95
FR	478360	-0,8	100	SK	27208	3,4	100
GR <sup>3</sup>	53988	2,1	100				
HR	16810	1,5	100	DK_W	21737	2,0	100
UCTE	2531244	1,4		UA_W	4328	-0,8	100

National annual maximum load in each country<sup>4</sup>

Country	Date	Day	Time	MW	$\Delta$ % <sup>1</sup>
AT	25 January	Wednesday	06:00 p.m.	9481	3,2
BA	29 December	Friday	06:00 p.m.	2019	0,7
BE	18 December	Monday	05:45 p.m.	13848	0,9
BG	25 January	Wednesday	06:00 p.m.	6930	6,6
CH	15 February	Wednesday	10:15 a.m.	10218	4,4
CS	26 January	Thursday	06:00 p.m.	7699	1,0
CZ	25 January	Wednesday	03:00 p.m.	10484	4,7
DE	11 December	Monday	05:30 p.m.	77800	1,4
ES	30 January	Monday	07:00 p.m.	41907	-2,8
FR	27 January	Friday	06:58 p.m.	86280	0,3
GR <sup>3</sup>	21 August	Monday	01:00 p.m.	9889	4,2
HR	25 January	Wednesday	08:00 p.m.	3036	4,7
HU	13 December	Wednesday	05:00 p.m.	6074	-0,1
IT	27 June	Thursday	11:00 a.m.	55619	1,1
LU	12 December	Thursday	06:00 p.m.	1035	-1,1
MK	31 December	Sunday	06:00 p.m.	1565	5,0
NL	12 January	Thursday	05:30 p.m.	16496	-2,5
PL	24 January	Thursday	06:00 p.m.	22673	4,6
PT	30 January	Monday	08:30 p.m.	8804	3,2
RO	13 December	Wednesday	05:00 p.m.	8151	0,6
SI	26 January	Thursday	07:00 p.m.	2075	0,1
SK	26 January	Thursday	06:00 p.m.	4423	1,8
DK_W <sup>5</sup>	04 January	Wednesday	06:00 p.m.	3755	n.a.
UA_W	25 January	Wednesday	06:00 p.m.	1028	0,4

<sup>1</sup> As compared to the last year.

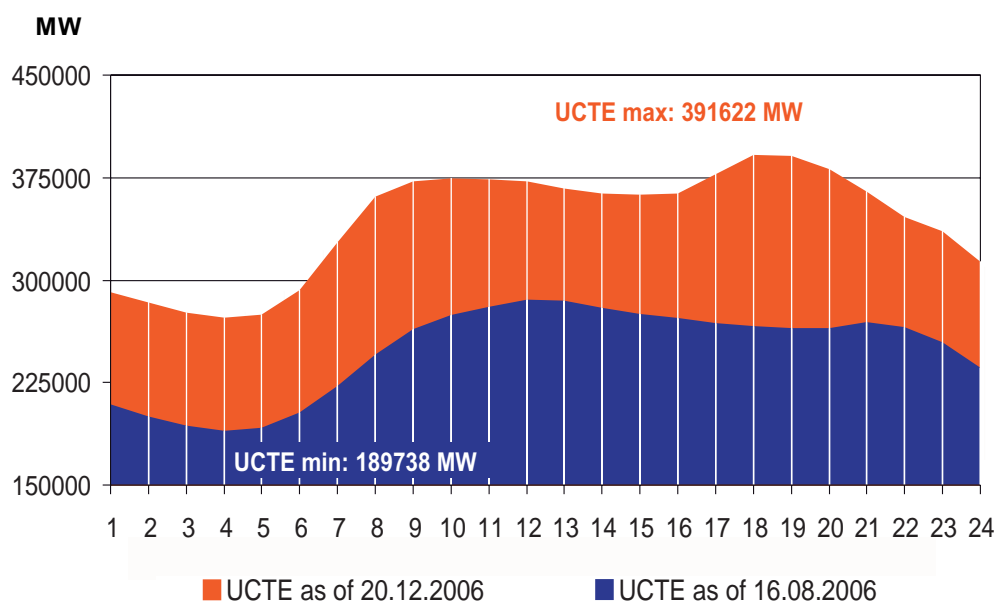
<sup>2</sup> Percentage as referred to the total values of a country.

(The total values of a country are defined as the synchronously interconnected system plus the areas directly connected via AC or DC to the mainland system.)

<sup>3</sup> The values for Greece refer to the interconnected system and not to the whole country.

<sup>4</sup> The maximum load values of each country are specified in the System Adequacy Retrospect 2006 published on 18 July 2007.

<sup>5</sup> The values of DK\_W are collected as monthly hourly load values and not contained in the SA Retrospect 2006.



## Highest load 3rd Wednesday of each country

## Lowest load 3rd Wednesday of each country

Country	MW	Date	Time	MW	Date	Time
AT	9222	20 December	06:00 p.m.	4202	16 August	04:00 a.m.
BA	1826	20 December	06:00 p.m.	843	16 August	05:00 a.m.
BE <sup>1</sup>	13317	20 December	06:00 p.m.	7362	16 August	04:00 a.m.
BG	6340	15 February	08:00 p.m.	2906	17 May	05:00 a.m.
CH	10218	15 February	10:00 a.m.	4834	16 August	04:00 a.m.
CS	7047	15 March	07:00 p.m.	2890	21 June	05:00 a.m.
CZ	10095	18 January	05:00 p.m.	5578	19 July	05:00 a.m.
DE <sup>1</sup>	80750	15 February	07:00 p.m.	43526	16 August	03:00 a.m.
ES	42744	20 December	07:00 p.m.	20133	16 August	04:00 a.m.
FR	80966	20 December	07:00 p.m.	32431	16 August	04:00 a.m.
GR <sup>2</sup>	8586	21 June	01:00 p.m.	4007	19 April	04:00 a.m.
HR	2817	20 December	06:00 p.m.	1207	17 May	04:00 a.m.
HU	6271	18 January	04:00 p.m.	3758	16 August	05:00 a.m.
IT	53816	18 January	06:00 p.m.	21737	16 August	04:00 a.m.
LU	972	18 January	07:00 p.m.	375	16 August	03:00 a.m.
MK	1520	18 January	06:00 p.m.	540	21 June	05:00 a.m.
NL	17855	20 December	10:00 a.m.	9016	16 August	05:00 a.m.
PL <sup>3</sup>	22017	20 December	05:00 p.m.	10626	16 August	04:00 a.m.
PT	9048	20 December	08:00 p.m.	3789	16 August	06:00 a.m.
RO	7974	20 December	06:00 p.m.	4923	16 August	05:00 a.m.
SI	2166	20 December	07:00 p.m.	1022	16 August	04:00 a.m.
SK	4316	18 January	05:00 p.m.	2500	16 August	03:00 a.m.
<b>UCTE</b>	<b>391622</b>	<b>20 December</b>	<b>06:00 p.m.</b>	<b>189738</b>	<b>16 August</b>	<b>04.00 a.m.</b>
DK_W	3652	18 January	06:00 p.m.	1686	19 July	05:00 a.m.
UA_W	969	18 January	05:00 p.m.	430	16 August	03:00 a.m.

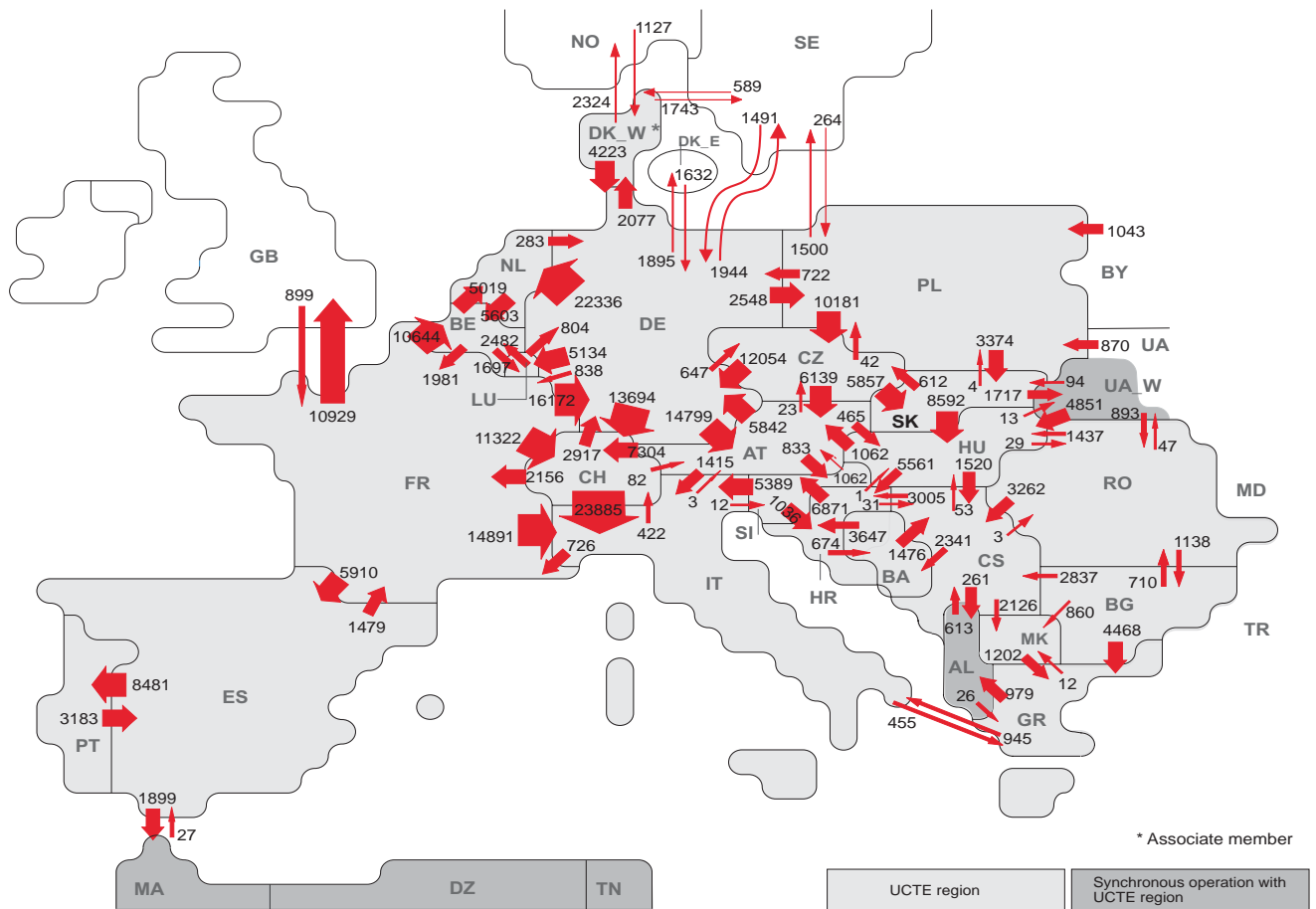
<sup>1</sup> The reported figures are best estimated based on actual measurements.

<sup>2</sup> The values for Greece refer to the interconnected system and not to the whole country.

<sup>3</sup> Average value of each hour.

Month	GW	Month	GW	Month	GW	Month	GW	Month	GW	Month	GW
01/1983	187,7	<b>01/1987</b>	<b>231,7</b>	01/1991	244,3	01/1995	254,6	01/1999	307,3	01/2003	361,0
<b>02/1983</b>	<b>197,6</b>	02/1987	215,6	02/1991	242,5	02/1995	235,4	02/1999	313,8	<b>02/2003</b>	<b>369,1</b>
03/1983	180,8	03/1987	208,1	03/1991	214,9	03/1995	237,6	03/1999	291,4	03/2003	329,1
04/1983	172,1	04/1987	195,9	04/1991	216,6	04/1995	227,1	04/1999	285,7	04/2003	317,4
05/1983	167,4	05/1987	193,1	05/1991	214,0	05/1995	223,6	05/1999	273,0	05/2003	311,2
06/1983	165,2	06/1987	189,8	06/1991	211,5	06/1995	220,3	06/1999	280,1	06/2003	321,2
07/1983	158,3	07/1987	188,2	07/1991	208,4	07/1995	220,2	07/1999	277,2	07/2003	314,1
<b>08/1983</b>	<b>141,0</b>	<b>08/1987</b>	<b>167,0</b>	<b>08/1991</b>	<b>189,7</b>	<b>08/1995</b>	<b>189,6</b>	<b>08/1999</b>	<b>255,1</b>	<b>08/2003</b>	<b>282,7</b>
09/1983	168,3	09/1987	193,4	09/1991	208,9	09/1995	232,7	09/1999	278,0	09/2003	306,0
10/1983	170,5	10/1987	196,5	10/1991	214,5	10/1995	265,4	10/1999	296,2	10/2003	320,2
11/1983	184,3	11/1987	204,7	11/1991	237,5	11/1995	285,4	11/1999	308,5	11/2003	343,1
12/1983	188,7	12/1987	216,1	<b>12/1991</b>	<b>245,3</b>	<b>12/1995</b>	<b>300,4</b>	<b>12/1999</b>	<b>319,1</b>	12/2003	361,6
01/1984	192,0	01/1988	211,4	<b>01/1992</b>	<b>245,9</b>	<b>01/1996</b>	<b>305,8</b>	01/2000	321,0	01/2004	361,1
<b>02/1984</b>	<b>197,1</b>	02/1988	209,3	02/1992	242,8	02/1996	302,0	02/2000	312,9	02/2004	352,8
03/1984	182,5	03/1988	208,0	03/1992	219,6	03/1996	284,4	03/2000	297,4	03/2004	327,9
04/1984	174,4	04/1988	194,3	04/1992	223,0	04/1996	266,9	04/2000	293,4	04/2004	316,4
05/1984	174,4	05/1988	192,6	05/1992	208,4	05/1996	264,3	05/2000	285,5	05/2004	311,4
06/1984	169,3	06/1988	193,3	06/1992	201,7	06/1996	263,3	06/2000	296,2	06/2004	313,2
07/1984	164,0	07/1988	188,4	07/1992	205,5	07/1996	259,0	07/2000	285,4	07/2004	325,7
<b>08/1984</b>	<b>152,5</b>	<b>08/1988</b>	<b>171,3</b>	<b>08/1992</b>	<b>187,4</b>	<b>08/1996</b>	<b>241,9</b>	<b>08/2000</b>	<b>259,1</b>	<b>08/2004</b>	<b>288,8</b>
09/1984	175,7	09/1988	197,9	09/1992	209,3	09/1996	267,5	09/2000	290,1	09/2004	317,5
10/1984	175,2	10/1988	197,5	10/1992	226,1	10/1996	276,0	10/2000	298,7	10/2004	329,1
11/1984	187,8	11/1988	215,8	11/1992	229,5	11/1996	296,7	11/2000	316,4	11/2004	350,0
12/1984	196,6	<b>12/1988</b>	<b>227,7</b>	12/1992	235,7	12/1996	304,0	<b>12/2000</b>	<b>324,3</b>	<b>12/2004</b>	<b>368,2</b>
<b>01/1985</b>	<b>224,6</b>	<b>01/1989</b>	<b>232,9</b>	01/1993	233,0	01/1997	306,2	01/2001	332,6	01/2005	362,7
02/1985	207,5	02/1989	228,7	02/1993	242,9	02/1997	291,8	02/2001	317,2	02/2005	361,3
03/1985	196,6	03/1989	218,4	03/1993	223,6	03/1997	279,2	03/2001	310,8	03/2005	329,6
04/1985	182,1	04/1989	215,7	04/1993	210,4	04/1997	279,8	04/2001	308,5	04/2005	323,2
05/1985	175,4	05/1989	203,3	05/1993	205,3	05/1997	266,4	05/2001	290,0	05/2005	317,9
06/1985	177,2	06/1989	205,8	06/1993	199,8	06/1997	267,0	06/2001	296,3	06/2005	320,3
07/1985	172,3	07/1989	197,0	07/1993	203,0	07/1997	263,1	07/2001	291,5	07/2005	323,5
<b>08/1985</b>	<b>157,9</b>	<b>08/1989</b>	<b>179,2</b>	<b>08/1993</b>	<b>190,7</b>	<b>08/1997</b>	<b>243,6</b>	<b>08/2001</b>	<b>242,8</b>	<b>08/2005</b>	<b>290,4</b>
09/1985	180,2	09/1989	203,3	09/1993	213,2	09/1997	266,3	09/2001	296,6	09/2005	322,8
10/1985	184,2	10/1989	207,4	10/1993	224,1	10/1997	283,6	10/2001	300,3	10/2005	333,7
11/1985	209,8	11/1989	225,3	11/1993	228,4	11/1997	293,9	11/2001	329,5	11/2005	354,0
12/1985	205,2	12/1989	223,3	<b>12/1993</b>	<b>245,6</b>	<b>12/1997</b>	<b>316,0</b>	<b>12/2001</b>	<b>343,4</b>	<b>12/2005</b>	<b>376,1</b>
01/1986	206,1	01/1990	233,5	<b>01/1994</b>	<b>254,4</b>	<b>01/1998</b>	<b>313,9</b>	01/2002	336,2	<b>01/2006</b>	<b>376,4</b>
<b>02/1986</b>	<b>215,1</b>	02/1990	214,3	02/1994	243,5	02/1998	294,4	02/2002	323,8	02/2006	368,7
03/1986	192,7	03/1990	209,7	03/1994	223,9	03/1998	294,1	03/2002	305,0	03/2006	359,5
04/1986	192,8	04/1990	219,6	04/1994	227,3	04/1998	292,0	04/2002	306,1	04/2006	327,7
05/1986	182,6	05/1990	204,4	05/1994	215,2	05/1998	265,4	05/2002	290,7	05/2006	325,5
06/1986	182,3	06/1990	207,5	06/1994	213,6	06/1998	271,0	06/2002	305,0	06/2006	334,2
07/1986	176,7	07/1990	204,8	07/1994	212,8	07/1998	267,8	07/2002	292,7	07/2006	336,4
<b>08/1986</b>	<b>161,7</b>	<b>08/1990</b>	<b>164,0</b>	<b>08/1994</b>	<b>193,8</b>	<b>08/1998</b>	<b>252,0</b>	<b>08/2002</b>	<b>268,0</b>	<b>08/2006</b>	<b>293,0</b>
09/1986	190,8	09/1990	209,8	09/1994	221,1	09/1998	280,0	09/2002	294,5	09/2006	329,0
10/1986	185,3	10/1990	210,8	10/1994	223,8	10/1998	289,3	10/2002	303,8	10/2006	335,8
11/1986	199,2	11/1990	226,6	11/1994	227,9	11/1998	308,9	11/2002	327,3	11/2006	341,3
12/1986	207,6	<b>12/1990</b>	<b>249,4</b>	12/1994	243,9	12/1998	311,5	<b>12/2002</b>	<b>344,4</b>	12/2006	374,5

<sup>1</sup> Including Denmark from 01/1990, German total values from 09/1995 on, the former CENTREL countries CZ, HU, PL, SK from 10/1995 and RO, BG from 1/2003 on.

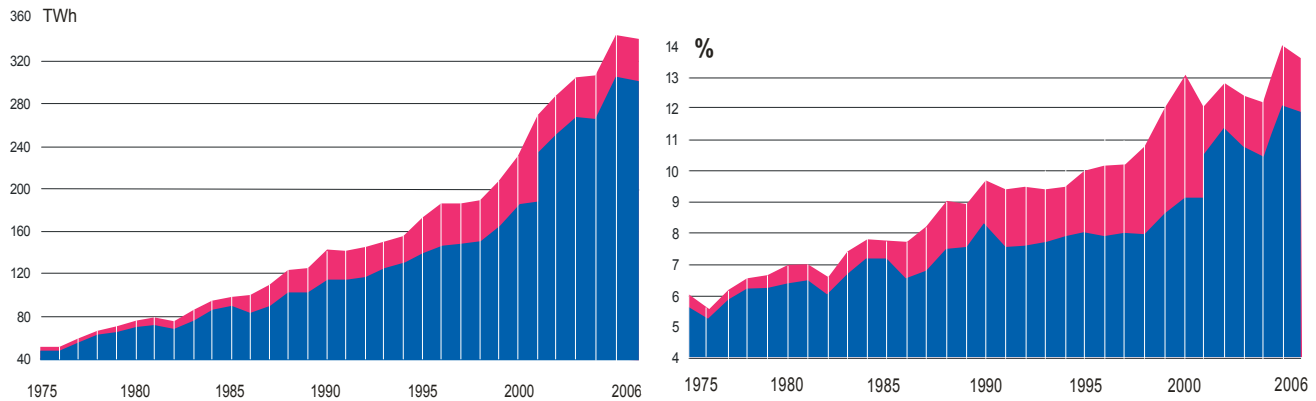


Exporting countries	Importing countries																				Sum export						
	AT	BA	BE	BG	CH	CS	CZ	DE	ES	FR	GR	HR	HU	IT	LU	MK	NL	PL	PT	RO		SI	SK	DK_W	UA_W	Other <sup>1</sup>	
AT	-	-	-	-	7304	-	23	5842	-	-	-	-	465	1415	-	-	-	-	-	-	833	-	-	-	-	15882	
BA	-	-	-	-	1476	-	-	-	-	-	-	3647	-	-	-	-	-	-	-	-	-	-	-	-	-	5123	
BE	-	-	-	-	-	-	-	-	1981	-	-	-	-	-	1697	5019	-	-	-	-	-	-	-	-	-	8697	
BG	-	-	-	-	2837	-	-	-	-	-	4468	-	-	-	-	-	-	-	-	710	-	-	-	-	0	8875	
CH	82	-	-	-	-	-	2917	2156	-	-	-	-	-	23885	-	-	-	-	-	-	-	-	-	-	-	29040	
CS	-	2341	-	0	-	-	-	-	-	-	-	-	3005	53	-	2126	-	-	-	3	-	-	-	-	261	7789	
CZ	6139	-	-	-	-	-	-	12054	-	-	-	-	-	-	-	-	42	-	-	-	-	5857	-	-	-	24092	
DE	14799	-	-	-	13694	-	647	-	838	-	-	-	-	5134	-	22336	2548	-	-	-	-	-	2077	-	3839	65912	
ES	-	-	-	-	-	-	-	-	1479	-	-	-	-	-	-	-	-	-	8481	-	-	-	-	-	1899	11859	
FR	-	-	10644	-	11322	-	-	16172	5910	-	-	-	14891	-	-	-	-	-	-	-	-	-	-	-	-	10929	69868
GR	-	-	-	0	-	-	-	-	-	-	-	-	945	-	12	-	-	-	-	-	-	-	-	-	-	979	1936
HR	-	674	-	-	-	31	-	-	-	-	-	-	1	-	-	-	-	-	-	-	-	6871	-	-	-	7577	
HU	1062	-	-	-	1520	-	-	-	-	-	-	5561	-	-	-	-	-	-	-	29	-	0	-	13	-	8185	
IT	3	-	-	-	422	-	-	-	-	726	455	-	-	-	-	-	-	-	-	-	12	-	-	-	-	1618	
LU	-	-	2482	-	-	-	804	-	-	-	-	-	-	-	-	-	-	-	-	-	-	-	-	-	-	3286	
MK	-	-	-	0	0	-	-	-	-	-	-	-	1202	-	-	-	-	-	-	-	-	-	-	-	-	1202	
NL	-	-	5603	-	-	-	283	-	-	-	-	-	-	-	-	-	-	-	-	-	-	-	-	-	-	5886	
PL	-	-	-	-	-	-	10181	722	-	-	-	-	-	-	-	-	-	-	-	-	-	-	-	-	-	15777	
PT	-	-	-	-	-	-	-	-	3183	-	-	-	-	-	-	-	-	-	-	-	-	-	-	-	-	3183	
RO	-	-	-	1138	3262	-	-	-	-	-	-	-	1437	-	-	-	-	-	-	-	-	-	-	47	0	5884	
SI	1062	-	-	-	-	-	-	-	-	-	1036	-	5389	-	-	-	-	-	-	-	-	-	-	-	-	7487	
SK	-	-	-	-	-	612	-	-	-	-	-	-	8592	-	-	-	4	-	-	-	-	-	-	-	-	10925	
DK_W	-	-	-	-	-	-	4223	-	-	-	-	-	-	-	-	-	-	-	-	-	-	-	-	-	4067	8290	
UA_W	-	-	-	-	-	-	-	-	-	-	-	4851	-	-	-	-	-	-	-	893	-	94	-	-	-	5838	
Other <sup>1</sup>	-	-	-	0	613	3123	27	899	26	-	-	-	-	-	-	-	-	-	-	0	-	1716	-	-	-	8581	
<b>Sum imp</b>	<b>23147</b>	<b>3015</b>	<b>18729</b>	<b>1138</b>	<b>32742</b>	<b>9739</b>	<b>11463</b>	<b>46140</b>	<b>9120</b>	<b>8079</b>	<b>6151</b>	<b>13249</b>	<b>15399</b>	<b>46525</b>	<b>6831</b>	<b>2998</b>	<b>27355</b>	<b>4771</b>	<b>8481</b>	<b>1635</b>	<b>7716</b>	<b>9325</b>	<b>3793</b>	<b>1777</b>	<b>23474</b>	<b>342792</b>	

Sum of physical energy flows between UCTE countries = 296822 GWh      Total physical energy flows = 342792 GWh

Other<sup>1</sup>: Albania, Belarus, Denmark East, Great Britain, Morocco, Republic of Moldavia, Norway, Sweden, Republic of Turkey and Ukraina  
 These physical energy flows were measured on the cross-frontier transmission lines (≤ 110 kV) listed in table T9 of this Yearbook.





Year	Sum of electricity exchanges within the UCTE		Part of exchanges in the consumption of the UCTE		Sum of electricity exchanges with CENTREL		Part of exchanges with CENTREL in the consumption of the UCTE		Volume of exchanges with third countries <sup>1</sup>		Part of exchanges with third countries in the consumption of the UCTE		Total exchanges		Part of total exchanges in the consumption of the UCTE	
	TWh	%	TWh	%	TWh	%	TWh	%	TWh	%	TWh	%	TWh	%		
1975	48,4	5,7							3,2	0,4			51,6	6,0		
1976	48,6	5,3							2,9	0,3			51,5	5,6		
1977	56,4	5,9							2,6	0,3			59,0	6,1		
1978	62,9	6,2							3,3	0,3			66,2	6,5		
1979	66,4	6,2							4,3	0,4			70,8	6,6		
1980	70,5	6,4							5,9	0,5			76,4	6,9		
1981	72,2	6,5							6,0	0,5			78,3	7,0		
1982	67,9	6,0							6,2	0,6			74,2	6,6		
1983	77,5	6,7							8,3	0,7			85,7	7,4		
1984	87,0	7,2							7,1	0,6			94,1	7,8		
1985	90,5	7,2							7,4	0,6			97,9	7,8		
1986	85,0	6,6							14,7	1,1			99,7	7,7		
1987	90,7	6,8							18,9	1,4			109,5	8,2		
1988	102,6	7,5							20,9	1,5			123,5	9,0		
1989	103,8	7,5							21,9	1,4			125,7	8,9		
1990	115,8	8,0							23,9	1,7			139,7	9,7		
1991	117,7	7,8							26,9	1,9			144,6	9,7		
1992	117,6	7,8							27,8	1,9			145,4	9,7		
1993	124,4	8,3							26,2	1,7			150,6	10,0		
1994	129,5	8,1							26,2	1,6			155,7	10,1		
1995	137,4	8,4	11,9	0,7					23,1	1,5			172,3	10,8		
1996	145,0	8,7	14,1	0,8					26,8	1,6			185,9	11,1		
1997	144,7	8,5	13,9	0,8					27,1	1,7			185,7	11,0		
1998	148,9	8,4	14,0	0,8					25,4	1,5			204,5	10,7		
1999	161,6	8,0	16,5	0,8					29,7	1,7			225,4	11,5		
2000	177,5	8,5	22,1	1,1					29,6	1,6			229,2	12,4		
2001	235,5	10,5							33,7	1,8			269,2	12,4		
2002	250,9	11,1							36,9	1,6			287,8	12,7		
2003	263,8	10,8							35,5	1,5			299,3	12,3		
2004	255,2	10,3							44,1	1,8			299,3	12,3		
2005	298,9	12,0							48,8	2,0			347,7	13,9		
2006	296,8	11,7							46,0	1,8			342,8	13,5		

<sup>1</sup> Import + export<sup>3</sup> From year 2001 on sum of exchanges including CZ, HU, PL SK<sup>2</sup> As of September 1995 total German values<sup>4</sup> From year 2003 on sum of exchanges including RO and BG

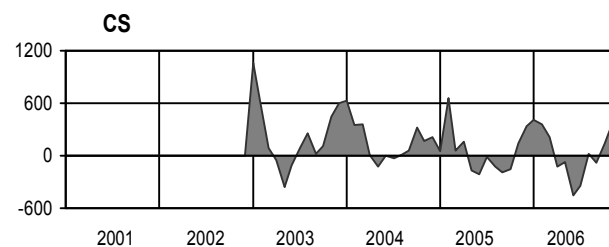
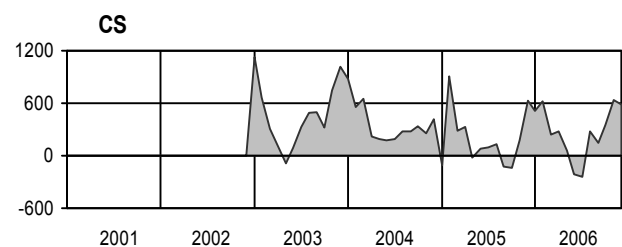
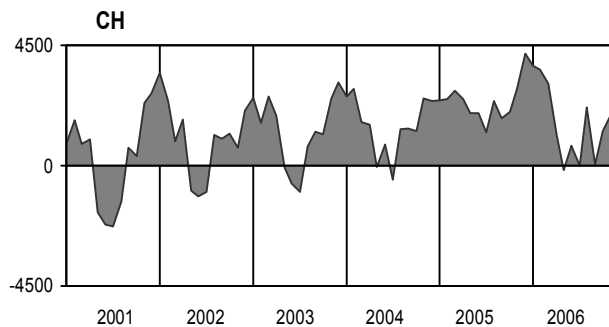
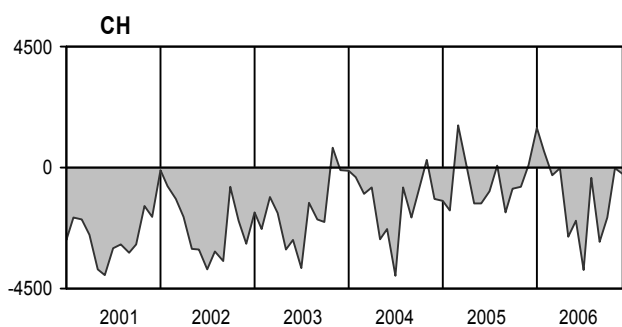
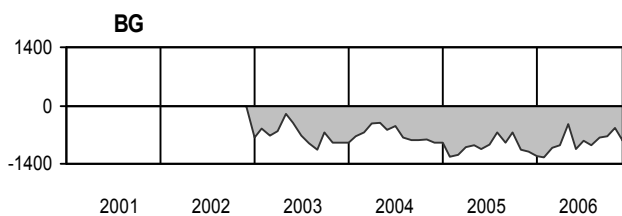
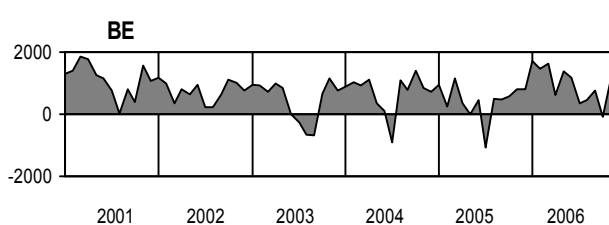
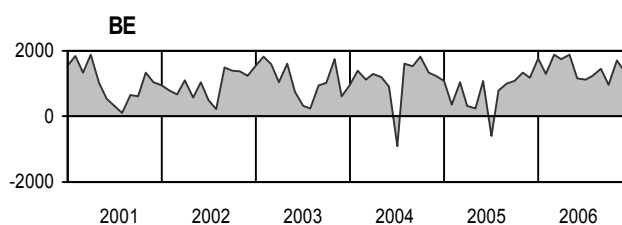
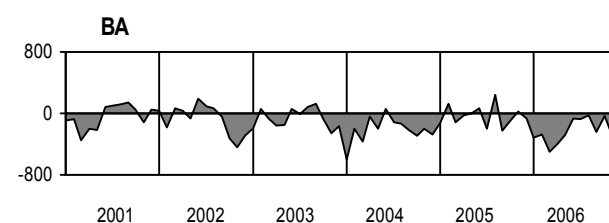
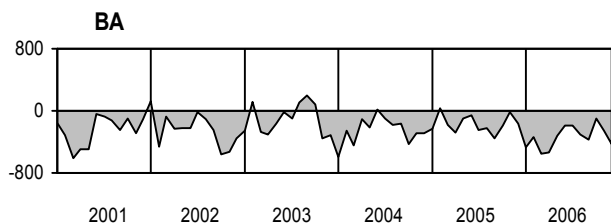
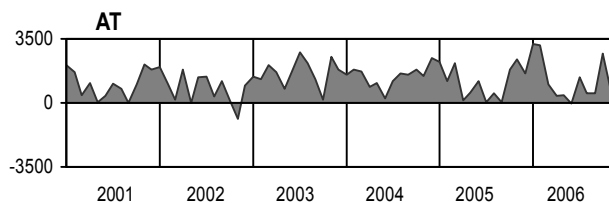
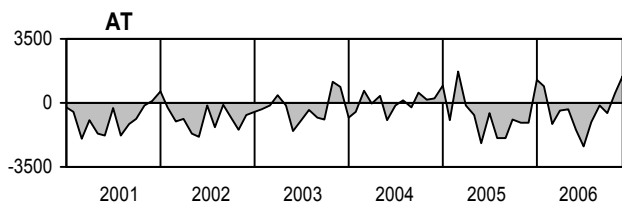
Control area	Export Programs	Import Programs	Export Programs at 03:00	Import Programs at 03:00	Export Programs at 11:00	Import Programs at 11:00
AT	7564798	11339182	16466	10054	14688	11560
BA	3392527	1227270	4379	1598	5128	1229
BE	6620940	15870796	8151	18536	9835	25647
BG	n.a.	n.a.	n.a.	n.a.	n.a.	n.a.
CH	25866235	29671427	24728	45415	49671	37950
CS	5078756	7011096	5994	7575	7586	10905
CZ	20315775	7175766	27974	10017	30472	11498
DE	40986003	27089748	52754	36026	46811	51202
ES	11047598	8830940	19659	12432	16019	11424
FR	89859283	27978211	120167	37613	119717	39393
GR	1109008	5317206	1195	7956	2191	6926
HR	1836199	7702508	3160	10923	3370	11838
HU	6047863	13262453	9383	15055	8218	20510
IT	1628115	46511347	4281	51774	1189	70254
MK	226354	1990548	883	2409	774	3474
NL	4191534	25691070	8071	30911	3750	36063
PL	12051646	1369808	17017	1501	19030	2984
PT	2282748	7730386	396	14958	5334	10022
RO	5680161	1415639	5202	2147	10367	1902
SI	6844783	7080205	9308	9709	10156	9405
SK	7421336	5096638	9735	5135	10322	9201
DK_W	3710210	7922497	5873	10964	6684	11676
UA_W	3980538	0	5197	0	6046	0

- Control areas can differ from national borders (i.e. German block which includes parts of AT, LU and DK\_W).
- Values are calculated on an hourly base ( MWh ).
- This values are not the provisional values entered in the VULCANUS system, but the definitive values after an eventual correction during the actual date.
- Export Programs: Sum of all positive values of every hour of every border
- Import Programs: Sum of all negative values of every hour of every border
- Export Programs at 03:00: Sum of all positive values the third Wednesday from 02:00 to 03:00 a.m.
- Import Programs at 03:00: Sum of all negative values the third Wednesday from 02:00 to 03:00 a.m.
- Export Programs at 11:00: Sum of all positive values the third Wednesday from 10:00 to 11:00 a.m.
- Import Programs at 11:00: Sum of all negative values the third Wednesday from 10:00 to 11:00 a.m.

11:00

Day load in MW <sup>1</sup>

03:00

Night load in MW <sup>1</sup>

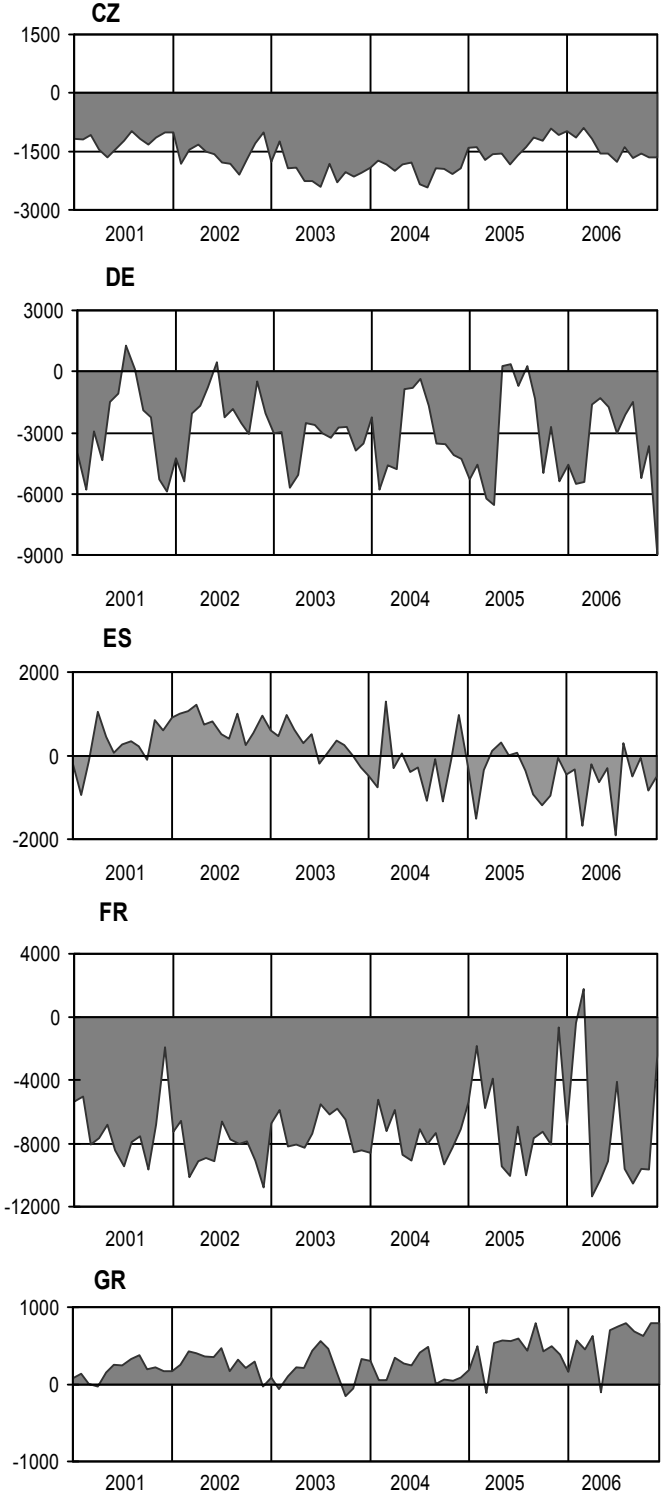
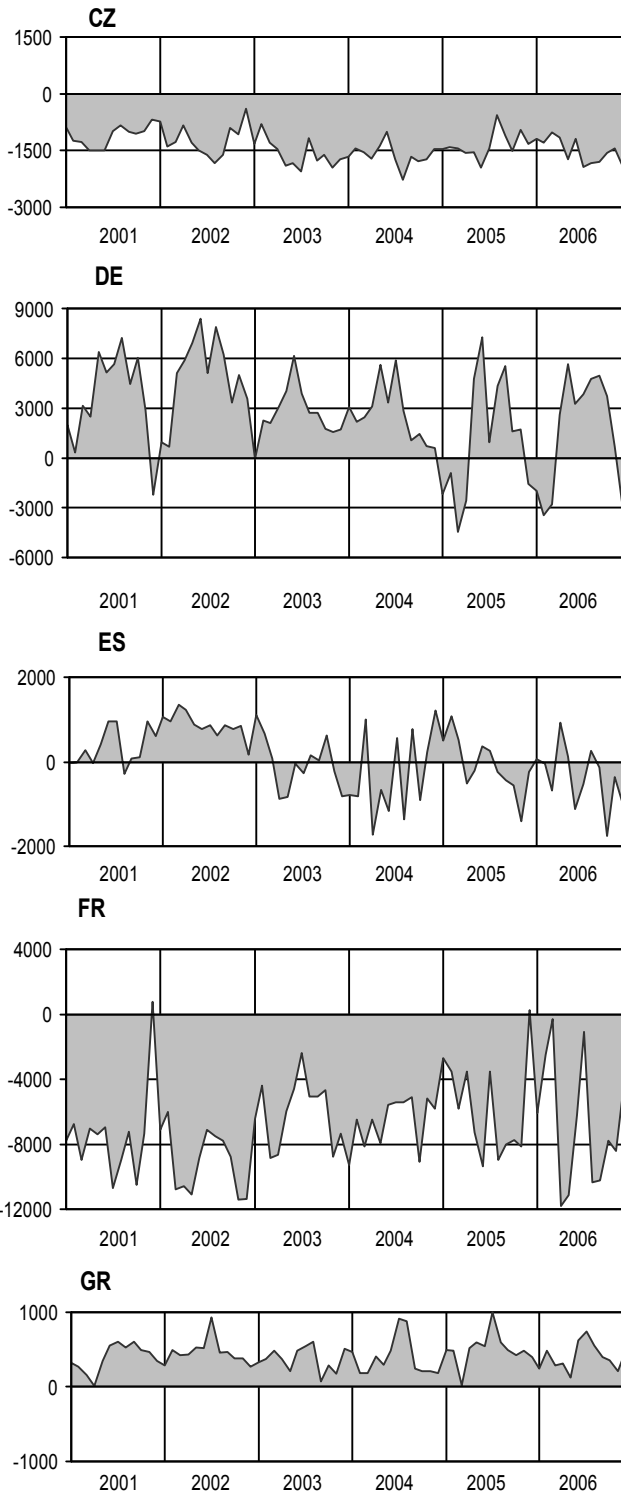
<sup>1</sup> Balance of import-export on the 3rd Wednesday of each month

11:00

Day load in MW <sup>1</sup>

03:00

Night load in MW <sup>1</sup>

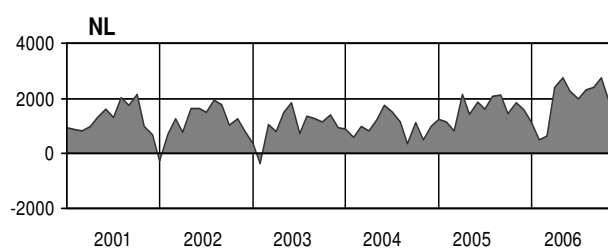
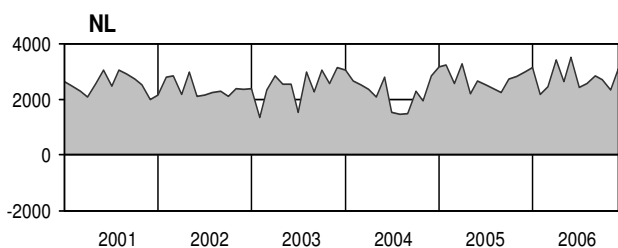
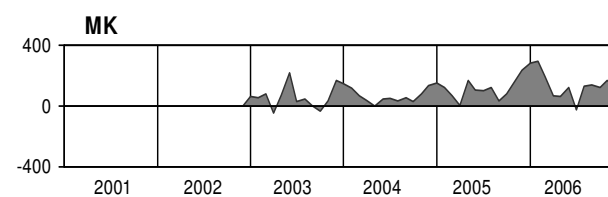
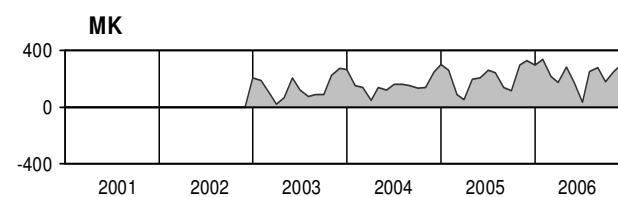
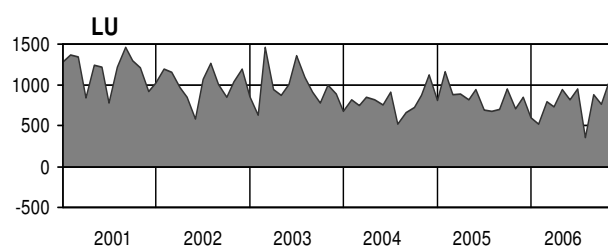
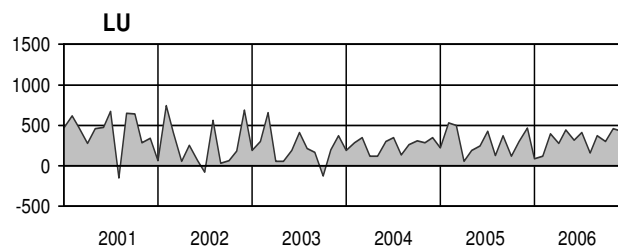
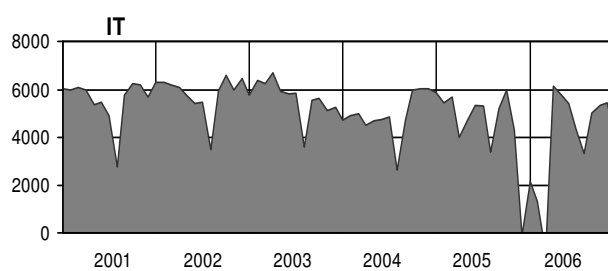
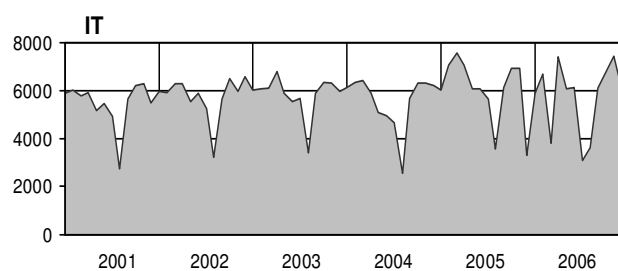
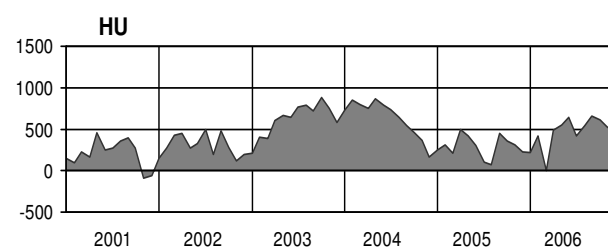
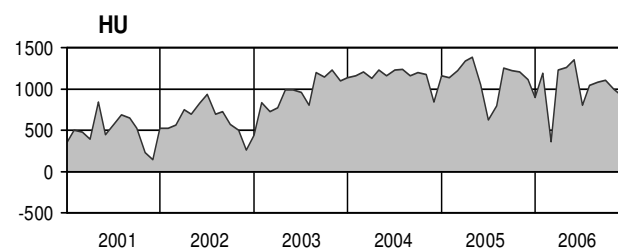
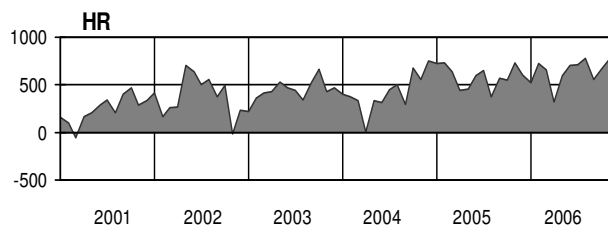
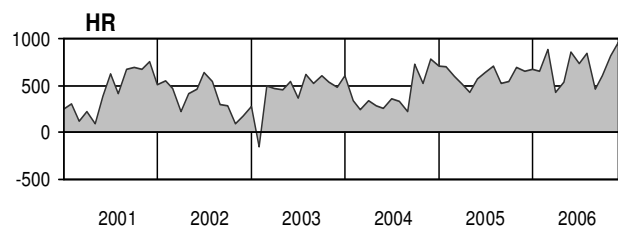


<sup>1</sup> Balance of import-export on the 3rd Wednesday of each month

11:00

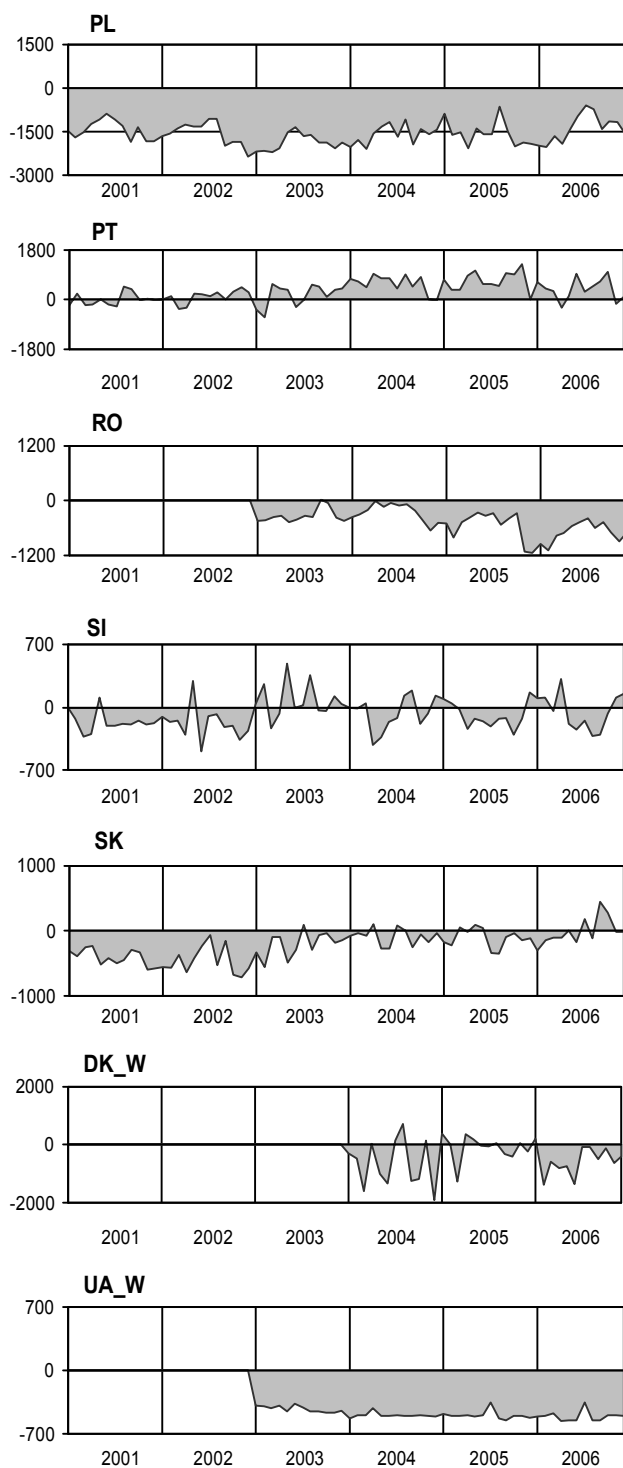
Day load in MW <sup>1</sup>

03:00

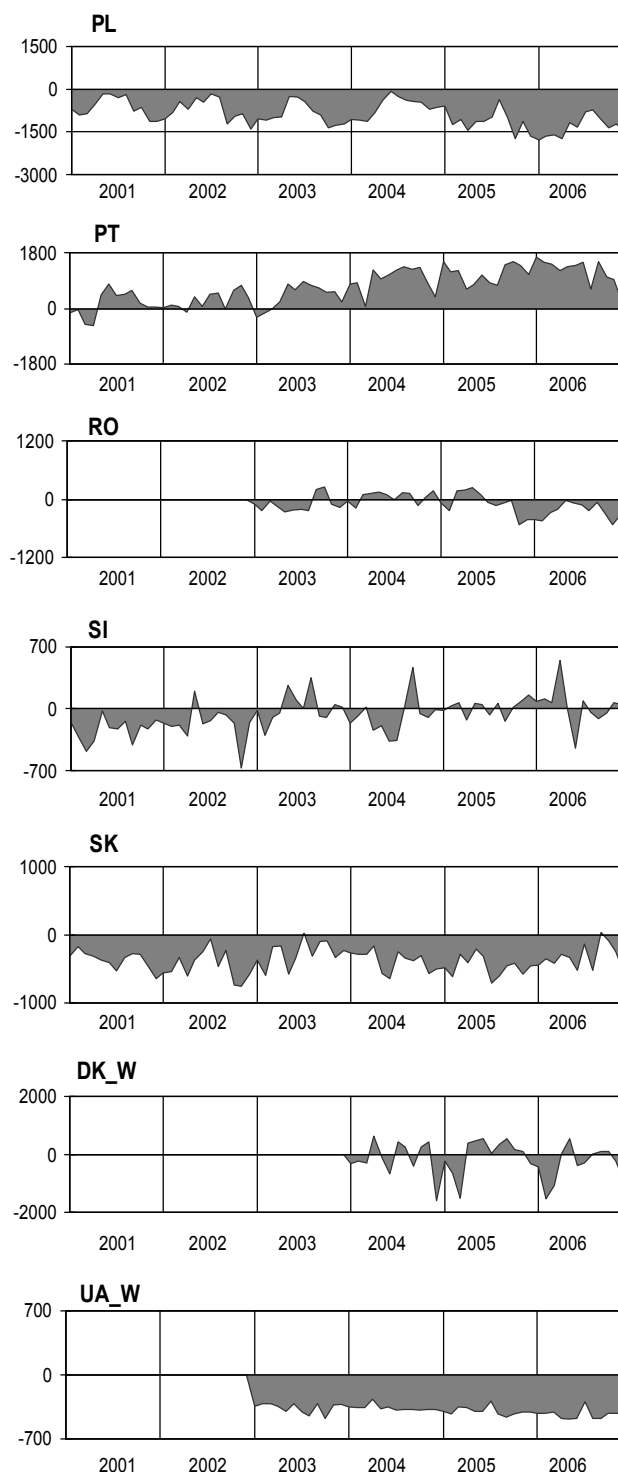
Night load in MW <sup>1</sup>

<sup>1</sup> Balance of import-export on the 3rd Wednesday of each month

11:00

Day load in MW <sup>1</sup>

03:00

Night load in MW <sup>1</sup><sup>1</sup> Balance of import-export on the 3rd Wednesday of each month

Date	Night	Day	Date	Night	Day
I.2001	22485	21506	I.2004	29256	34182
II.2001	24270	21701	II.2004	29916	32890
III.2001	22606	22523	III.2004	28158	31485
IV.2001	22826	22771	IV.2004	26784	29284
V.2001	18931	22471	V.2004	25067	29647
VI.2001 <sup>2</sup>	22937	28497	VI.2004	24757	26479
VII.2001	22396	29460	VII.2004	26091	29950
VIII.2001	19764	26445	VIII.2004	23333	26840
IX.2001	27418	28283	IX.2004	28708	30714
X.2001	27983	29375	X.2004	30693	33706
XI.2001	32435	30251	XI.2004	32489	33415
XII.2001	32609	28430	XII.2004	36858	32395
I.2002	32599	29658	I.2005	37275	33964
II.2002	32064	29798	II.2005	37569	37991
III.2002	27400	30810	III.2005	34802	39231
IV.2002	28886	29676	IV.2005	32930	37448
V.2002	26206	30858	V.2005	29743	31564
VI.2002	24956	30339	VI.2005	33353	36145
VII.2002	27487	31903	VII.2005	30301	34641
VIII.2002	24449	28729	VIII.2005	29701	30909
IX.2002	29478	28641	IX.2005	30425	32967
X.2002	27592	29120	X.2005	33755	35394
XI.2002	26918	31182	XI.2005	33728	36159
XII.2002	30551	31115	XII.2005	32850	33209
I.2003 <sup>3</sup>	32119	31521	I.2006	33189	39380
II.2003	28830	28596	II.2006	35935	39220
III.2003	32173	31062	III.2006	34048	35330
IV.2003	31075	32458	IV.2006	33833	37349
V.2003	28734	30022	V.2006	30974	33176
VI.2003	29938	32246	VI.2006	31574	34413
VII.2003	28929	28988	VII.2006	27811	30712
VIII.2003	26184	27360	VIII.2006	29425	31511
IX.2003	29103	29350	IX.2006	30387	32741
X.2003	27866	30843	X.2006	35170	35269
XI.2003	31576	35241	XI.2006	34951	38371
XII.2003	31604	33542	XII.2006	36861	37100

<sup>1</sup> Day load at 11.00 a.m. and night load at 3.00 a.m. on the 3rd Wednesday of each month. The power flows crossing common borders with neighbouring third countries are excluded.

<sup>2</sup> As of June 2001 on the power flows include countries CZ, HU, PL and SK.

<sup>3</sup> From year 2003 on the power flows include RO and BG.

## Maximum output capacity on 31 December 2006, 2005 and 2001 in MW

Country	Thermal nuclear			Thermal conventional			Hydropower			Other sources <sup>2</sup>			Total			Representativity <sup>1</sup>		
	2006	2005	2001	2006	2005	2001	2006	2005	2001	2006	2005	2001	2006	2005	2001	2006	2005	2001
AT	-	-	-	6254	5900	5620	11811	11700	11700	849	670	80	18914	18270	16860	100	100	91
BA	-	-	-	1957	1957	1790	2064	2064	2052	-	-	-	4021	4021	3842	100	99	99
BE	5802	5802	5738	8165	8175	8248	1410	1410	1403	746	667	262	16123	16054	15651	100	100	99
BG	2000	2880	n.a.	5390	5410	n.a.	2704	2700	n.a.	8	1	n.a.	10102	10991	n.a.	100	100	n.a.
CH	3220	3220	3200	340	335	295	13355	13355	13285	525	520	530	17440	17430	17310	100	100	100
CS	-	-	n.a.	6400	6400	n.a.	3497	3497	n.a.	-	-	n.a.	9897	9897	n.a.	100	100	n.a.
CZ	3537	3537	1637	10585	10558	10628	2175	2165	2125	77	43	-	16374	16303	14390	100	100	100
DE	20300	20200	20700	70400	70400	67300	9100	9100	8300	24500	19600	8000	124300	119300	104300	90	90	90
ES	7458	7600	7574	38064	34669	24593	18905	18839	17887	12446	10902	3619	76873	72010	53673	100	100	100
FR	63260	63260	63183	24837	25331	23503	25457	25398	24094	2403	1554	255	115957	115543	111035	100	100	97
GR <sup>3</sup>	-	-	-	8097	7601	6300	3133	3108	3090	587	595	155	11817	11304	9545	100	100	89
HR	-	-	-	1691	1691	1631	2079	2079	2075	10	5	-	3780	3775	3706	100	100	100
HU	1755	1755	1772	5253	5202	5608	46	46	46	1117	1077	398	8171	8080	7824	100	100	100
IT	-	-	-	66200	62164	54570	21070	20993	20433	2536	2313	1207	89806	85470	76210	100	100	100
LU	-	-	-	487	481	460	1128	1128	1128	69	67	20	1684	1676	1608	100	100	99
MK	-	-	n.a.	907	1010	n.a.	503	517	n.a.	-	-	n.a.	1410	1527	n.a.	100	100	n.a.
NL	485	449	449	19294	19457	17342	37	37	37	2331	2034	1576	22147	21977	19404	100	100	100
PL	-	-	-	29810	29724	31189	2324	2245	2185	168	108	13	32302	32077	33387	100	100	100
PT	-	-	-	6681	6561	5095	4948	4915	4430	1988	1353	271	13617	12829	9796	97	96	91
RO	655	655	n.a.	9029	9173	n.a.	5817	5819	n.a.	-	-	n.a.	15501	15647	n.a.	100	100	n.a.
SI	696	670	1241	1260	1262	670	873	872	778	-	-	-	2829	2804	2689	100	100	100
SK	2640	2640	2640	2270	2270	2294	2429	2429	2427	701	699	696	8040	8038	8057	100	100	100
<b>UCTE</b>	<b>111808</b>	<b>112668</b>	<b>108134</b>	<b>323371</b>	<b>315731</b>	<b>273889</b>	<b>134865</b>	<b>134416</b>	<b>120828</b>	<b>51061</b>	<b>42208</b>	<b>17082</b>	<b>621105</b>	<b>605023</b>	<b>519933</b>			
DK_W	-	-	n.a.	5156	5133	n.a.	10	10	n.a.	2391	2392	n.a.	7556	7534	n.a.	100	100	n.a.
UA_W	-	-	n.a.	1501	2347	n.a.	27	27	n.a.	-	-	n.a.	1528	2374	n.a.	100	100	n.a.

<sup>1</sup> Percentage as referred to the total values of a country

(The total values of a country are defined as the synchronously interconnected system plus the areas directly connected via AC or DC to the mainland system.)

<sup>2</sup> Values of other sources are the sum of other renewable and not clearly identifiable sources.

<sup>3</sup> The values for Greece refer to the interconnected system and not to the whole country.



**UCTE System Adequacy Retrospect 2006, Power Data**

**Net values at the reference time 11:00 a.m. on the 3rd Wednesday of each month ( Data published on 18 July 2007 ) Values in GW**

**T8a**

	Jan.	Feb.	March	April	May	June	July	Aug.	Sept.	Oct.	Nov.	Dec.
<b>National generating capacity</b>												
1. Hydro power capacity	134,6	134,6	134,6	134,6	134,6	134,6	134,7	134,7	134,6	134,7	134,7	134,8
2. Nuclear power capacity	112,6	112,6	112,6	112,6	112,4	112,7	112,4	112,4	112,4	112,4	112,4	112,4
3. Fossil fuel power capacity including	321,4	322,1	322,9	322,9	323,2	324,2	326,0	326,5	326,5	326,9	326,8	327,0
- Lignite sources	62,7	62,7	62,7	62,7	62,7	62,7	62,7	62,8	62,8	62,8	62,8	62,8
- Hard coal sources	78,1	77,6	77,6	77,6	77,6	77,6	77,6	77,7	77,8	77,8	77,8	77,8
- Gas sources	72,1	73,4	74,1	74,1	74,6	75,5	77,2	77,5	77,5	77,9	77,9	77,9
- Oil sources	31,9	31,9	31,9	31,9	31,9	31,9	31,9	31,9	31,9	31,9	31,9	31,8
- Mixed sources	34,3	34,3	34,3	34,3	34,3	34,3	34,3	34,3	34,2	34,2	34,2	34,0
- Non attributable sources	42,3	42,3	42,3	42,3	42,1	42,1	42,2	42,2	42,2	42,2	42,2	42,7
4. Renewable energy sources capacity	41,3	42,2	42,9	43,7	44,1	44,9	45,6	46,2	46,8	47,4	48,3	49,2
- including wind farms	34,1	34,8	35,2	35,8	36,0	36,4	36,8	37,1	37,4	37,8	38,4	39,0
5. Not clearly identifiable energy sources capacity	1,5	1,4	1,5	1,5	1,5	1,5	1,5	1,5	1,6	1,6	1,6	1,6
<b>6. Net generating capacity (6 = 1+2+3+4+5)</b>	<b>611,3</b>	<b>612,9</b>	<b>614,4</b>	<b>615,3</b>	<b>615,8</b>	<b>617,7</b>	<b>620,3</b>	<b>621,4</b>	<b>622,1</b>	<b>623,0</b>	<b>623,8</b>	<b>625,1</b>
7. Non-usable capacity	106,2	105,3	104,4	112,8	111,9	118,3	132,5	125,6	125,1	116,6	113,2	107,8
8. Overhauls (thermal power stations)	10,4	15,7	30,3	39,0	56,6	47,8	45,8	50,8	48,4	40,3	28,5	13,7
9. Outages (thermal power stations)	14,7	18,0	19,2	18,3	16,8	17,2	17,0	17,6	15,4	17,0	14,3	19,2
10. System services reserve	29,9	29,9	27,7	30,4	27,4	26,4	27,4	29,8	28,8	30,1	30,2	29,3
<b>11. Reliably available capacity (11 = 6-(7+8+9+10))</b>	<b>450,1</b>	<b>444,0</b>	<b>432,8</b>	<b>414,8</b>	<b>403,0</b>	<b>407,9</b>	<b>397,6</b>	<b>397,5</b>	<b>404,3</b>	<b>419,0</b>	<b>437,6</b>	<b>455,2</b>
<b>12. Load</b>	<b>369,5</b>	<b>365,4</b>	<b>352,4</b>	<b>317,4</b>	<b>310,1</b>	<b>324,8</b>	<b>325,5</b>	<b>274,3</b>	<b>314,4</b>	<b>325,2</b>	<b>334,8</b>	<b>368,1</b>
13. Margin against monthly peak load	34,3	28,6	24,8	26,8	21,1	17,4	19,6	59,0	29,2	23,1	40,9	30,4
<b>14. Remaining capacity without exchanges (14 = 11-12)</b>	<b>80,6</b>	<b>78,7</b>	<b>80,4</b>	<b>97,4</b>	<b>92,9</b>	<b>83,1</b>	<b>72,1</b>	<b>123,2</b>	<b>89,9</b>	<b>93,8</b>	<b>102,7</b>	<b>87,0</b>
<b>Physical exchanges</b>												
15. Physical imports	41,8	42,6	36,8	39,3	35,8	36,1	32,0	31,8	33,9	37,2	40,9	40,5
16. Physical exports	39,7	39,9	37,4	39,5	38,4	35,1	31,9	33,8	34,0	36,5	39,0	38,1
<b>17. Physical exchange balance</b>	<b>2,1</b>	<b>2,7</b>	<b>- 0,6</b>	<b>- 0,2</b>	<b>- 2,6</b>	<b>1,0</b>	<b>0,1</b>	<b>- 2,0</b>	<b>- 0,0</b>	<b>0,7</b>	<b>1,8</b>	<b>2,4</b>

T8b

UCTE System Adequacy Retrospect 2006, Energy Data ( Data published on 18 July 2007 )

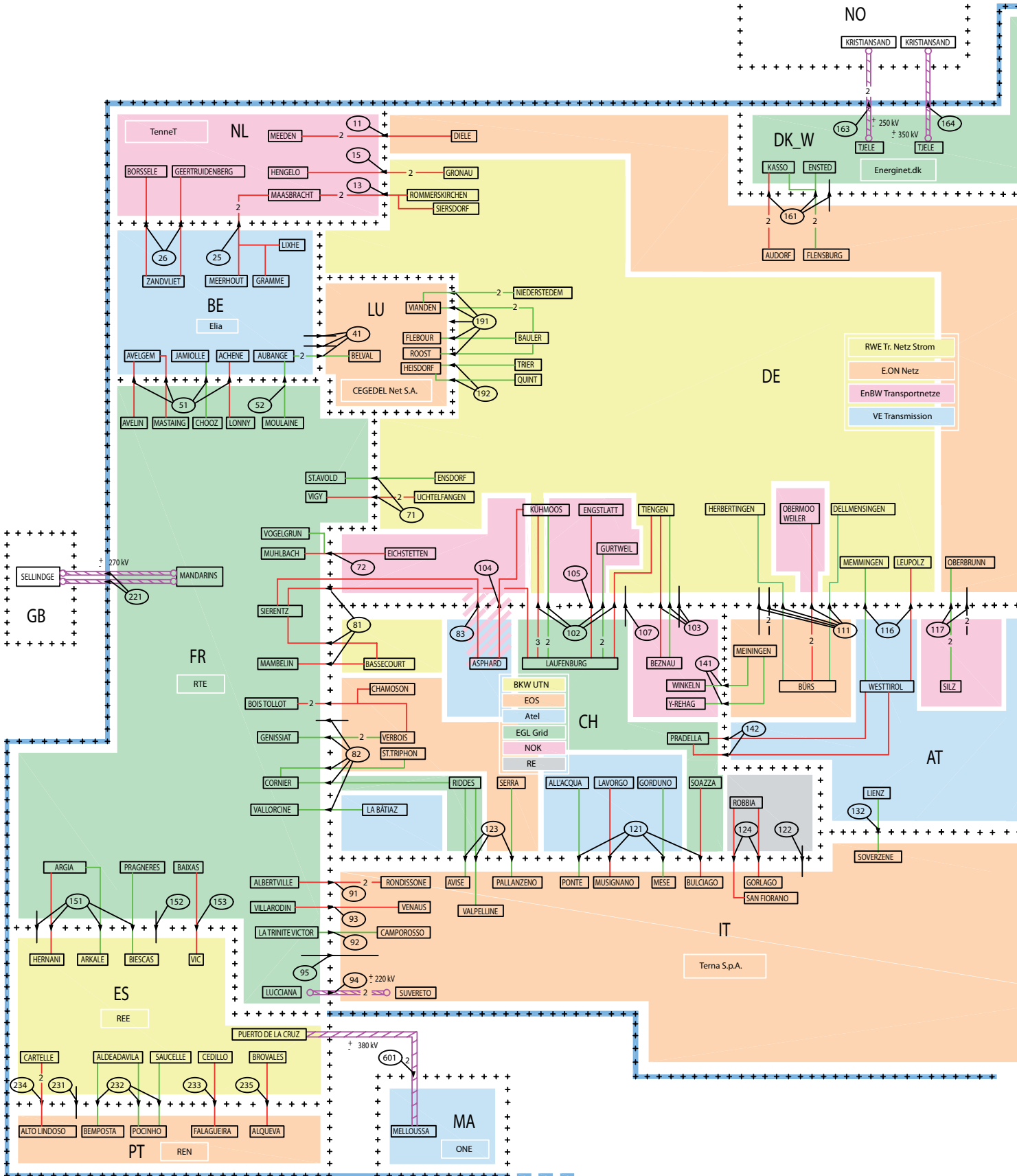
Values in TWh

	AT	BA	BE	BG	CH	CS	CZ	DE	ES	FR	GR	HR	HU	IT	LU	MK	NL	PL	PT	RO	SI	SK	UCTE	UA_W
<b>Generation</b>																								
1. Hydro power	32,5	5,9	1,6	4,5	32,6	12,5	3,2	27,5	29,2	60,9	6,4	6,1	0,2	42,4	0,9	1,6	0,1	2,8	11,2	18,0	3,1	4,4	<b>307,8</b>	0,1
2. Nuclear power	-	-44,3	18,1	26,2	-	24,5	158,7	57,4	428,7	-	-	12,7	-	-	-	-	3,3	-	-	5,2	5,3	16,6	<b>801,0</b>	-
3. Fossil fuel power including	16,2	7,5	32,6	18,9	2,3	28,8	49,9	359,8	149,3	54,0	42,7	5,4	18,7	250,9	3,2	4,9	84,0	145,7	28,4	34,2	4,7	5,4	<b>1355,8</b>	8,3
- lignite sources	-	7,5	-	10,6	-	28,8	39,2	139,7	20,2	-	29,2	-	5,0	-	-	4,9	-	49,2	-	18,9	-	1,7	354,9	-
- hard coal sources	-	-	1,4	6,4	-	-	6,0	-	42,2	21,6	-	2,0	1,7	39,4	-	-	-	92,4	14,1	3,6	4,7	2,2	237,8	-
- gas sources	-	-	21,1	-	-	-	3,7	-	80,2	13,9	10,2	0,3	10,3	126,0	3,2	-	-	4,1	9,8	10,3	0,0	1,2	294,3	-
- oil sources	-	-	0,1	-	-	-	0,2	-	6,5	7,8	3,3	0,8	0,0	33,3	-	-	-	-	1,4	1,3	-	-	54,8	-
- mixed sources	-	-	8,8	1,9	-	-	-	-	-	-	2,3	1,8	33,5	-	-	-	-	-	0,2	-	-	-	48,5	-
- non attributable sources	16,2	-	1,1	-	2,3	-	0,7	220,1	0,3	10,6	0,0	-	-	18,5	-	-	84,0	-	2,9	0,1	-	0,3	365,5	8,3
4. Renewable energy sources including wind farms	-	-	2,9	-	1,1	-	0,2	50,1	26,1	5,5	1,3	0,1	1,2	8,4	0,1	-	7,4	0,3	4,8	0,0	-	9,0	<b>109,5</b>	-
5. Not clearly identified energy sources	-	-	0,3	-	0,0	-	0,0	30,5	22,2	2,2	1,2	0,1	0,0	3,2	0,1	-	2,7	0,2	2,9	0,0	-	6,0	62,6	-
6. Net generated energy	6,8	-	-	-	-	-	-	-	-	-	-	-	0,7	-	-	-	-	-	-	-	-	-	<b>10,1</b>	-
7. Physical exchanges balance	<b>55,5</b>	<b>13,3</b>	<b>81,4</b>	<b>41,5</b>	<b>62,1</b>	<b>41,3</b>	<b>77,8</b>	<b>596,1</b>	<b>262,0</b>	<b>549,1</b>	<b>50,4</b>	<b>11,6</b>	<b>33,4</b>	<b>301,7</b>	<b>4,2</b>	<b>6,6</b>	<b>94,8</b>	<b>148,9</b>	<b>44,4</b>	<b>57,4</b>	<b>13,1</b>	<b>29,0</b>	<b>2584,1</b>	<b>8,4</b>
7a. Physical imports	<b>6,8</b>	<b>-2,2</b>	<b>10,2</b>	<b>-7,7</b>	<b>2,7</b>	<b>1,9</b>	<b>-12,6</b>	<b>-20,0</b>	<b>-3,3</b>	<b>-63,3</b>	<b>4,2</b>	<b>5,7</b>	<b>7,2</b>	<b>44,7</b>	<b>3,6</b>	<b>1,8</b>	<b>21,5</b>	<b>-11,0</b>	<b>5,4</b>	<b>-4,2</b>	<b>-0,2</b>	<b>-1,6</b>	<b>-14,2</b>	<b>4,1</b>
7b. Physical exports	21,1	3,0	18,9	1,1	48,8	9,7	11,5	46,0	9,1	8,3	6,1	8,4	15,3	46,5	6,8	3,0	27,3	4,8	8,6	1,6	7,7	9,3	<b>324,5</b>	1,8
8. Pumped storage energy	14,4	5,2	8,7	8,9	46,1	7,8	24,1	66,0	12,4	71,5	1,9	2,7	8,1	1,6	3,3	1,2	5,9	15,8	3,2	5,9	7,5	10,9	<b>338,8</b>	5,8
9. Consumption	3,3	-	1,7	0,5	2,7	0,8	0,9	9,1	5,5	7,4	0,6	0,2	-	8,6	1,1	-	-	1,4	0,7	0,2	-	0,2	<b>45,0</b>	-
	<b>58,9</b>	<b>11,1</b>	<b>89,9</b>	<b>33,3</b>	<b>62,1</b>	<b>42,4</b>	<b>64,2</b>	<b>567,0</b>	<b>253,2</b>	<b>478,4</b>	<b>54,0</b>	<b>17,1</b>	<b>40,6</b>	<b>337,8</b>	<b>6,6</b>	<b>8,4</b>	<b>116,2</b>	<b>136,5</b>	<b>49,2</b>	<b>53,3</b>	<b>13,4</b>	<b>27,2</b>	<b>2525,2</b>	<b>4,3</b>

LEGEND

- 750 kV
- 380/400 kV
- 220 kV
- 150/110 kV

- LAUFENBURG Substation
- 15 Frontier point
- Direct current line
- UCTE synchronous zone



LEGEND

750 kV  
 380/400 kV  
 220 kV  
 150/110 kV

LAUFENBURG Substation  
 15 Frontier point  
 Direct current line  
 UCTE synchronous zone

