



TABLES AND GRAPHS

3

	Page	
T1	Net electricity generation and its structure 2004	114
T2	Development of net production of electricity	115
T3	National consumption and peak load on December 2004	116
G1	Variation of the last 12 months' consumption	117
T4	Development of power produced in parallel operation	118
G2	Physical energy flows 2004	119
T5a	Development of physical exchanges on the tie lines	120
T5b	Scheduled exchanges	121
G3	Balance of simultaneous power flows across the frontiers	122
T6	Development of the balance of simultaneous power flows	126
T7	Maximum output capacity on 31.12.2004	127
T8a	System adequacy retrospect 2004, power data	128
T8b	System adequacy retrospect 2004, energy data	129
G4	Simplified diagram of the interconnected network	130
G5	Monthly electricity exchanges across frontiers	132
G6	Power transfers across frontiers	134
T9	Characteristics of the cross-frontier transmission lines	136
T9a	Unavailability of international tie lines - Overview	145
T10	Inventory of transmission network installations	148
T11	Number of < 220 kV, 220 kV und 380 kV circuits on cross-frontier transmission lines	150
T12	Commissioning of new transmission installations	151
T13	System reliability	152
T14a	Inventory of thermal units ≥ 10 MW per country as of 31 December 2004	164
T14b	Commissioning and decommissioning of major thermal power units in 2004	165
T15a	Inventory of hydro power units ≥ 1 MW as of 31 December 2004	166
T15b	Commissioning and decommissioning of hydro power units in 2004	167

Country	Thermal conventional		Thermal nuclear		Hydropower		Total	Representativity ¹
	TWh	%	TWh	%	TWh	%	TWh	%
AT	22,1	39,2	-	-	34,3	60,8	56,4	84
BA	6,6	52,5	-	-	6,0	47,5	12,6	99
BE	34,9	42,9	44,9	55,2	1,6	1,9	81,4 ²	99
BG	21,2	51,6	16,6	40,5	3,3	7,9	41,1 ²	100
CH	3,0	4,7	25,4	40,0	35,1	55,3	63,5 ²	100
CS	25,3	65,4	-	-	13,4	34,6	38,7	96
CZ	50,6	64,9	24,8	31,8	2,5	3,2	77,9 ²	100
DE	387,5	68,1	158,4	27,8	23,4	4,1	569,3 ²	100
ES	148,4	61,1	60,9	25,0	33,8	13,9	243,0 ²	94
FR	55,4	10,1	426,8	78,1	64,5	11,8	546,6	100
GR	44,2	90,0	-	-	4,9	10,0	49,2 ²	100 ³
HR	5,4	43,7	-	-	7,0	56,3	12,4 ²	100
HU	19,4	62,9	11,2	36,4	0,2	0,6	30,8 ²	100
IT	240,9	83,0	-	-	49,3	17,0	290,2	100
LU	3,1	77,3	-	-	0,9	22,7	4,0	98
MK	4,7	76,2	-	-	1,5	23,8	6,2 ²	100
NL	91,0	96,2	3,6	3,8	-	-	94,6 ²	100
PL	138,3	97,5	-	-	3,5	2,5	141,8 ²	100
PT	28,7	72,9	-	-	10,7	27,1	39,4 ²	95
RO	30,5	58,8	5,2	9,9	16,3	31,3	52,0 ²	100
SI	4,6	34,5	5,2	38,7	3,6	26,8	13,5	95
SK	8,6	30,4	15,7	55,3	4,0	14,3	28,3 ²	100
UCTE	1374,6	55,2	798,7	32,0	319,6	12,8	2492,9²	
DK_W	24,2	99,9	-	-	0,0	0,1	24,3 ²	99
UA_W	7,5	98,2	-	-	0,1	1,8	7,7 ²	100

¹ Percentage as referred to the total values of a country.

(The total values of a country are defined as the synchronously interconnected system plus the areas directly connected via AC or DC to the mainland system.)

² Including deliveries from industry

³ The values for Greece refer to the interconnected system and not to the whole country.

Year	Thermal conventional	Thermal nuclear	Hydro power	Total
	TWh	TWh	TWh	TWh
1975	585,4	50,0	222,9	858,3
1976	669,1	69,5	191,2	929,8
1977	610,4	82,2	276,2	968,8
1978	659,9	97,4	266,1	1023,4
1979	691,3	110,6	275,4	1077,3
1980	712,1	133,9	263,4	1109,4
1981	678,4	191,0	256,4	1125,8
1982	665,5	211,2	258,0	1134,7
1983	653,3	258,8	255,9	1168,0
1984	617,3	348,5	257,0	1222,8
1985	597,3	426,3	255,2	1278,8
1986	593,6	464,4	253,3	1311,3
1987	607,7	483,0	264,9	1355,6
1988	597,0	514,6	282,9	1394,5
1989	668,2	551,6	216,2	1436,0
1990	690,6	558,5	222,8	1472,0
1991	701,7	579,6	246,2	1527,5
1992	689,5	591,2	240,2	1520,9
1993	656,8	613,2	244,3	1514,3
1994	729,2	601,7	272,5	1603,3
1995 ¹	837,6	623,2	257,1	1717,9
1996	693,4	652,9	274,0	1620,3
1997	784,2	660,4	264,0	1708,7
1998 ²	1057,7	689,5	284,4	2031,5
1999	1053,0	705,5	302,0	2060,5
2000	1093,4	733,8	305,1	2132,3
2001	1129,8	744,4	331,6	2205,8
2002	1187,3	757,8	276,1	2221,2
2003 ³	1305,7	787,4	307,4	2400,5
2004	1374,5	798,7	319,7	2492,9

¹ As of September 1995 total German values

² Included values of CZ, HU, PL, SK as of 1998

³ Included values of RO, BG as of 2003

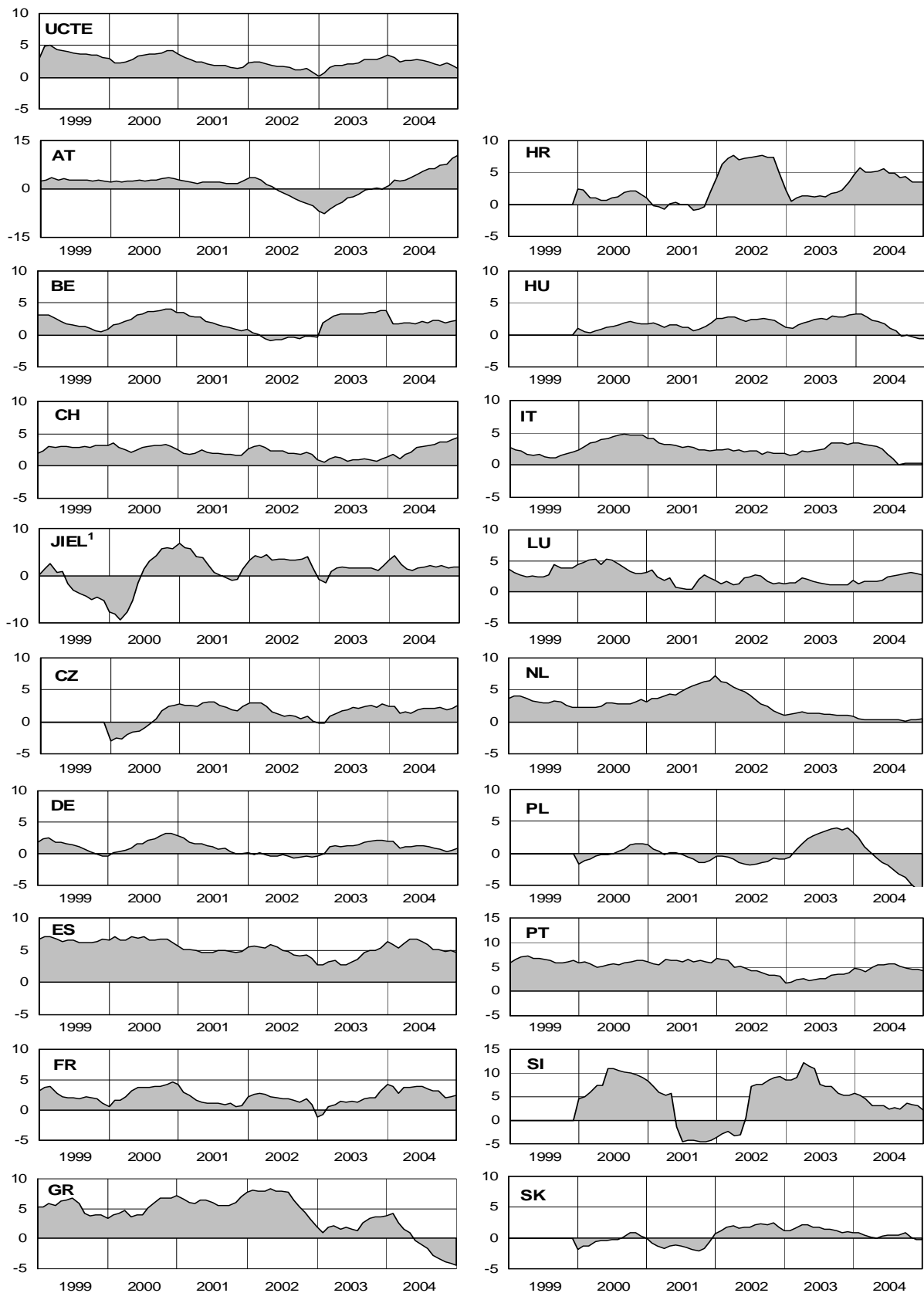
Country	National electricity consumption		Percentage as referred total values ²	Peak load on the 3 rd Wednesday	Date	Time
	TWh	Δ % ¹	%	MW		
AT	56,6	10,3	90	8894	15 December	06:00 p.m.
BA	10,5	-15,9	99	1803	15 December	06:00 p.m.
BE	87,5	2,1	99	13325	15 December	07:00 p.m.
BG	35,0	-4,6	100	5949	15 December	08:00 p.m.
CH	60,4	1,9	100	9548	15 December	06:00 p.m.
CS	39,9	1,9	96	6867	15 December	06:00 p.m.
CZ	61,5	2,6	100	10097	15 December	06:00 p.m.
DE	552,7	1,8	100	74300	15 December	06:00 p.m.
ES	235,4	4,2	94	37196	15 December	07:00 p.m.
FR	477,2	2,7	100	79981	15 December	07:00 p.m.
GR	51,2	1,8	100 ³	8507	21 July	01:00 p.m.
HR	16,0	3,4	100	2692	15 December	06:00 p.m.
HU	38,2	-0,5	100	6357	15 December	04:00 p.m.
IT	325,4	1,5	100	53093	15 December	06:00 p.m.
LU	6,3	2,8	99	952	17 November	10:00 a.m.
MK	7,4	2,4	100	1358	15 December	05:00 p.m.
NL	110,9	1,2	100	15053	15 December	06:00 p.m.
PL	130,3	-5,8	100	20937	15 December	05:00 p.m.
PT	45,5	2,3	95	7845	15 December	08:00 p.m.
RO	50,8	2,6	100	8028	15 December	05:00 p.m.
SI	12,7	2,2	95	1947	17 November	07:00 p.m.
SK	26,3	-0,3	100	4323	15 December	05:00 p.m.
UCTE	2437,4	1,6		372278	15 December	07:00 p.m.
DK_W	20,8	n.a.	99	3553	21 January	06:00 p.m.
UA_W	4,4	7,1	100	975	15 December	06:00 p.m.

¹ As compared to the last year

² Percentage as referred to the total values of a country.

(The total values of a country are defined as the synchronously interconnected system plus the areas directly connected via AC or DC to the mainland system.)

³ The values for Greece refer to the interconnected system and not to the whole country.



¹ JIEL = FRY + FYROM (Federal Republic of Yugoslavia and Former Yugoslav Republic of Macedonia)

Month	GW	Month	GW	Month	GW	Month	GW	Month	GW	Month	GW
01/1981	182,9	01/1985	224,6	01/1989	232,9	01/1993	233,0	01/1997	306,2	01/2001	332,6
02/1981	184,0	02/1985	207,5	02/1989	228,7	02/1993	242,9	02/1997	291,8	02/2001	317,2
03/1981	175,8	03/1985	196,6	03/1989	218,4	03/1993	223,6	03/1997	279,2	03/2001	310,8
04/1981	159,0	04/1985	182,1	04/1989	215,7	04/1993	210,4	04/1997	279,8	04/2001	308,5
05/1981	159,2	05/1985	175,4	05/1989	203,3	05/1993	205,3	05/1997	266,4	05/2001	290,0
06/1981	161,0	06/1985	177,2	06/1989	205,8	06/1993	199,8	06/1997	267,0	06/2001	296,3
07/1981	155,2	07/1985	172,3	07/1989	197,0	07/1993	203,0	07/1997	263,1	07/2001	291,5
08/1981	138,3	08/1985	157,9	08/1989	179,2	08/1993	190,7	08/1997	243,6	08/2001	242,8
09/1981	164,8	09/1985	180,2	09/1989	203,3	09/1993	213,2	09/1997	266,3	09/2001	296,6
10/1981	170,6	10/1985	184,2	10/1989	207,4	10/1993	224,1	10/1997	283,6	10/2001	300,3
11/1981	181,1	11/1985	209,8	11/1989	225,3	11/1993	228,4	11/1997	293,9	11/2001	329,5
12/1981	191,3	12/1985	205,2	12/1989	223,3	12/1993	245,6	12/1997	316,0	12/2001	343,4
01/1982	187,3	01/1986	206,1	01/1990	233,5	01/1994	254,4	01/1998	313,9	01/2002	336,2
02/1982	190,4	02/1986	215,1	02/1990	214,3	02/1994	243,5	02/1998	294,4	02/2002	323,8
03/1982	181,7	03/1986	192,7	03/1990	209,7	03/1994	223,9	03/1998	294,1	03/2002	305,0
04/1982	170,9	04/1986	192,8	04/1990	219,6	04/1994	227,3	04/1998	292,0	04/2002	306,1
05/1982	162,4	05/1986	182,6	05/1990	204,4	05/1994	215,2	05/1998	265,4	05/2002	290,7
06/1982	164,6	06/1986	182,3	06/1990	207,5	06/1994	213,6	06/1998	271,0	06/2002	305,0
07/1982	151,6	07/1986	176,7	07/1990	204,8	07/1994	212,8	07/1998	267,8	07/2002	292,7
08/1982	138,5	08/1986	161,7	08/1990	164,0	08/1994	193,8	08/1998	252,0	08/2002	268,0
09/1982	164,3	09/1986	190,8	09/1990	209,8	09/1994	221,1	09/1998	280,0	09/2002	294,5
10/1982	168,5	10/1986	185,3	10/1990	210,8	10/1994	223,8	10/1998	289,3	10/2002	303,8
11/1982	178,8	11/1986	199,2	11/1990	226,6	11/1994	227,9	11/1998	308,9	11/2002	327,3
12/1982	190,8	12/1986	207,6	12/1990	249,4	12/1994	243,9	12/1998	311,5	12/2002	344,4
01/1983	187,7	01/1987	231,7	01/1991	244,3	01/1995	254,6	01/1999	307,3	01/2003	361,7
02/1983	197,6	02/1987	215,6	02/1991	242,5	02/1995	235,4	02/1999	313,8	02/2003	369,2
03/1983	180,8	03/1987	208,1	03/1991	214,9	03/1995	237,6	03/1999	291,4	03/2003	328,1
04/1983	172,1	04/1987	195,9	04/1991	216,6	04/1995	227,1	04/1999	285,7	04/2003	314,0
05/1983	167,4	05/1987	193,1	05/1991	214,0	05/1995	223,6	05/1999	273,0	05/2003	313,9
06/1983	165,2	06/1987	189,8	06/1991	211,5	06/1995	220,3	06/1999	280,1	06/2003	319,1
07/1983	158,3	07/1987	188,2	07/1991	208,4	07/1995	220,2	07/1999	277,2	07/2003	318,3
08/1983	141,0	08/1987	167,0	08/1991	189,7	08/1995	189,6	08/1999	255,1	08/2003	288,7
09/1983	168,3	09/1987	193,4	09/1991	208,9	09/1995	232,7	09/1999	278,0	09/2003	309,5
10/1983	170,5	10/1987	196,5	10/1991	214,5	10/1995	265,4	10/1999	296,2	10/2003	320,4
11/1983	184,3	11/1987	204,7	11/1991	237,5	11/1995	285,4	11/1999	308,5	11/2003	338,1
12/1983	188,7	12/1987	216,1	12/1991	245,3	12/1995	300,4	12/1999	319,1	12/2003	356,9
01/1984	192,0	01/1988	211,4	01/1992	245,9	01/1996	305,8	01/2000	321,0	01/2004	361,1
02/1984	197,1	02/1988	209,3	02/1992	242,8	02/1996	302,0	02/2000	312,9	02/2004	352,1
03/1984	182,5	03/1988	208,0	03/1992	219,6	03/1996	284,4	03/2000	297,4	03/2004	324,7
04/1984	174,4	04/1988	194,3	04/1992	223,0	04/1996	266,9	04/2000	293,4	04/2004	318,4
05/1984	174,4	05/1988	192,6	05/1992	208,4	05/1996	264,3	05/2000	285,5	05/2004	310,4
06/1984	169,3	06/1988	193,3	06/1992	201,7	06/1996	263,3	06/2000	296,2	06/2004	313,9
07/1984	164,0	07/1988	188,4	07/1992	205,5	07/1996	259,0	07/2000	285,4	07/2004	326,8
08/1984	152,5	08/1988	171,3	08/1992	187,4	08/1996	241,9	08/2000	259,1	08/2004	289,9
09/1984	175,7	09/1988	197,9	09/1992	209,3	09/1996	267,5	09/2000	290,1	09/2004	318,1
10/1984	175,2	10/1988	197,5	10/1992	226,1	10/1996	276,0	10/2000	298,7	10/2004	331,4
11/1984	187,8	11/1988	215,8	11/1992	229,5	11/1996	296,7	11/2000	316,4	11/2004	352,8
12/1984	196,6	12/1988	227,7	12/1992	235,7	12/1996	304,0	12/2000	324,3	12/2004	371,0

¹ Including Denmark from 01/1990, German total values from 09/1995 on, the former CENTREL countries CZ, HU, PL, SK from 10/1995 and RO, BG from 1/2003 on.

Year	Sum of electricity exchanges within the UCTE		Sum of electricity exchanges with CENTREL		Volume of exchanges with third countries ¹		Total exchanges	
	TWh	%	TWh	%	TWh	%	TWh	%
1975	48,4	5,7			3,2	0,4	51,6	6,0
1976	48,6	5,3			2,9	0,3	51,5	5,6
1977	56,4	5,9			2,6	0,3	59,0	6,1
1978	62,9	6,2			3,3	0,3	66,2	6,5
1979	66,4	6,2			4,3	0,4	70,8	6,6
1980	70,5	6,4			5,9	0,5	76,4	6,9
1981	72,2	6,5			6,0	0,5	78,3	7,0
1982	67,9	6,0			6,2	0,6	74,2	6,6
1983	77,5	6,7			8,3	0,7	85,7	7,4
1984	87,0	7,2			7,1	0,6	94,1	7,8
1985	90,5	7,2			7,4	0,6	97,9	7,8
1986	85,0	6,6			14,7	1,1	99,7	7,7
1987	90,7	6,8			18,9	1,4	109,5	8,2
1988	102,6	7,5			20,9	1,5	123,5	9,0
1989	103,8	7,5			21,9	1,4	125,7	8,9
1990	115,8	8,0			23,9	1,7	139,7	9,7
1991	117,7	7,8			26,9	1,9	144,6	9,7
1992	117,6	7,8			27,8	1,9	145,4	9,7
1993	124,4	8,3			26,2	1,7	150,6	10,0
1994	129,5	8,1			26,2	1,6	155,7	10,1
1995 ²	137,4	8,4	11,9	0,7	23,1	1,5	172,3	10,8
1996	145,0	8,7	14,1	0,8	26,8	1,6	185,9	11,1
1997	144,7	8,5	13,9	0,8	27,1	1,7	185,7	11,0
1998	148,9	8,4	14,0	0,8	25,4	1,5	204,5	10,7
1999	161,6	8,0	16,5	0,8	29,7	1,7	225,4	11,5
2000	177,5	8,5	22,1	1,1	29,6	1,6	229,2	12,4
2001 ³	235,5	9,8			33,7	1,8	269,2	12,4
2002	250,9	11,5			36,9	1,7	287,8	13,2
2003 ⁴	263,7	11,2			35,4	1,5	299,1	12,7
2004	255,2	10,5			44,0	1,8	299,2	12,3

¹ import + export³ From year 2001 sum of exchanges include CZ, HU, PL SK² As of September 1995 total German values⁴ From year 2003 sum of exchanges include RO and BG

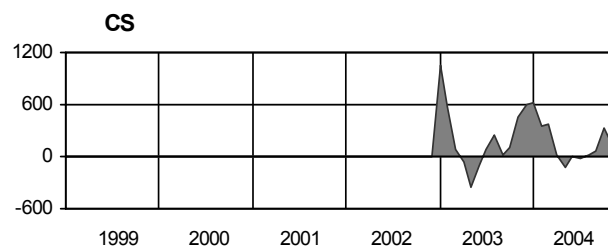
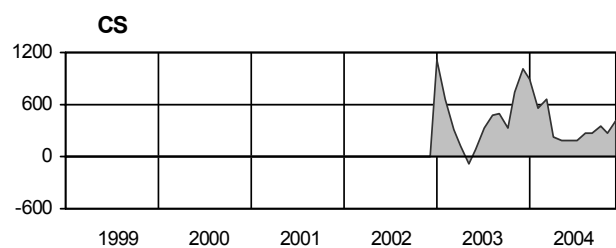
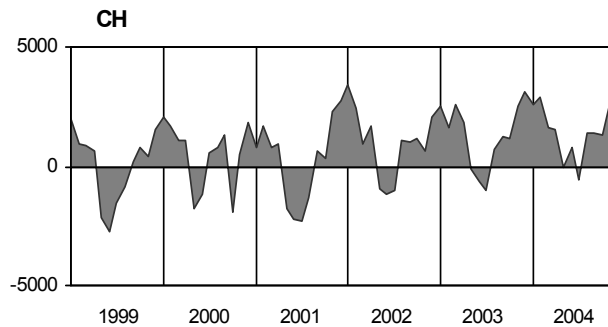
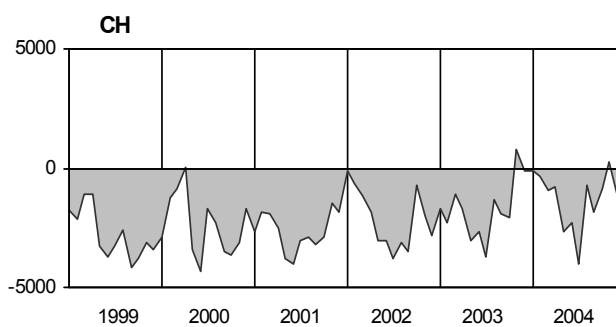
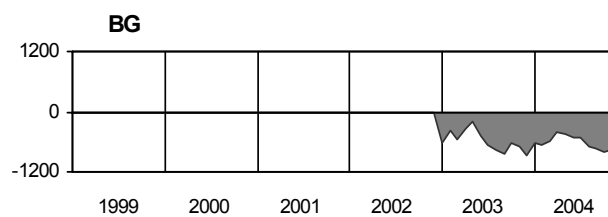
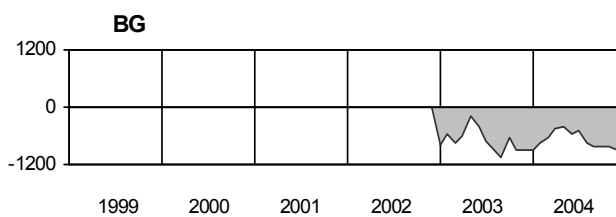
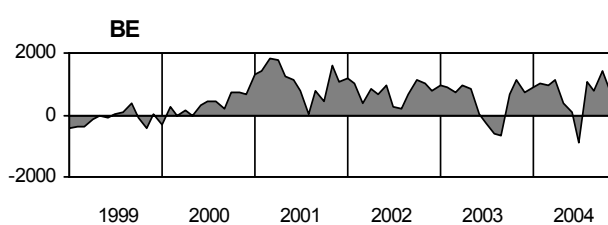
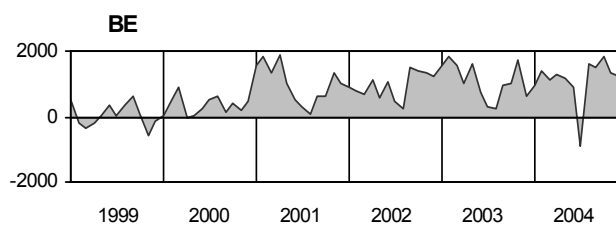
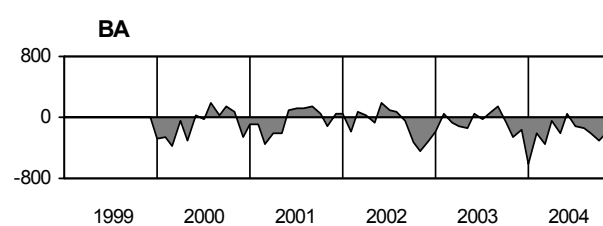
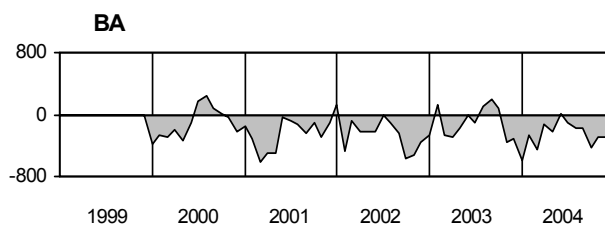
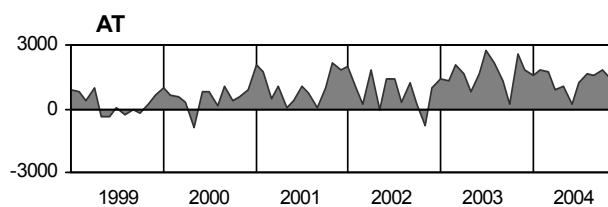
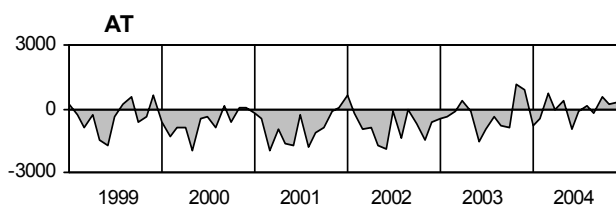
Control area	Export Programs	Import Programs	Export Programs at 03:00	Import Programs at 03:00	Export Programs at 11:00	Import Programs at 11:00
AT	4933502	5737947	6488	4876	10567	8507
BA	2148113	1333896	3766	800	3638	755
BE	6055343	13043280	7075	14799	4626	17986
BG	n.a.	n.a.	n.a.	n.a.	n.a.	n.a.
CH	25348457	26157095	24493	42494	47094	30927
CS	4446277	6364307	5210	6842	6874	11208
CZ	22559666	6643177	31510	7224	32143	12654
DE	39001122	34158451	44609	38345	44643	57678
ES	11319998	7979215	14650	13392	17779	13646
FR	89597516	29161718	117896	26816	116126	37312
GR	1552531	4380285	2610	4952	2620	7156
HR	3666533	7293600	5538	7043	3969	5403
HU	3055517	10523746	5244	13043	3641	17402
IT	754149	46282345	445	59155	1540	68082
MK	552000	1739500	1977	2732	2814	4590
NL	5882189	22075449	13808	21942	12039	27879
PL	11359658	1807560	11308	3681	22473	2341
PT	976096	7459681	250	11814	4378	11372
RO	5701074	3112996	6152	4148	8163	4161
SI	7083150	6312095	10090	8971	9840	8822
SK	7130506	4517739	9280	3950	10723	8566
DK_W	8134240	4988162	10699	8806	13437	6813
UA_W	3261216	0	4394	0	5864	0

- Control areas can differ from national borders (i.e. German block which includes parts of AT, LU and DK_W).
- Values are calculated on an hourly base (MWh).
- This values are not the provisional values entered in the VULCANUS system, but the definitive values after an eventual correction during the actual date.
- Export Programs: Sum of all positive values of every hour of every border
- Import Programs: Sum of all negative values of every hour of every border
- Export Programs at 03:00: Sum of all positive values the third Wednesday from 02:00 to 03:00 a.m.
- Import Programs at 03:00: Sum of all negative values the third Wednesday from 02:00 to 03:00 a.m.
- Export Programs at 11:00: Sum of all positive values the third Wednesday from 10:00 to 11:00 a.m.
- Import Programs at 11:00: Sum of all negative values the third Wednesday from 10:00 to 11:00 a.m.

11:00

Day load in MW ¹

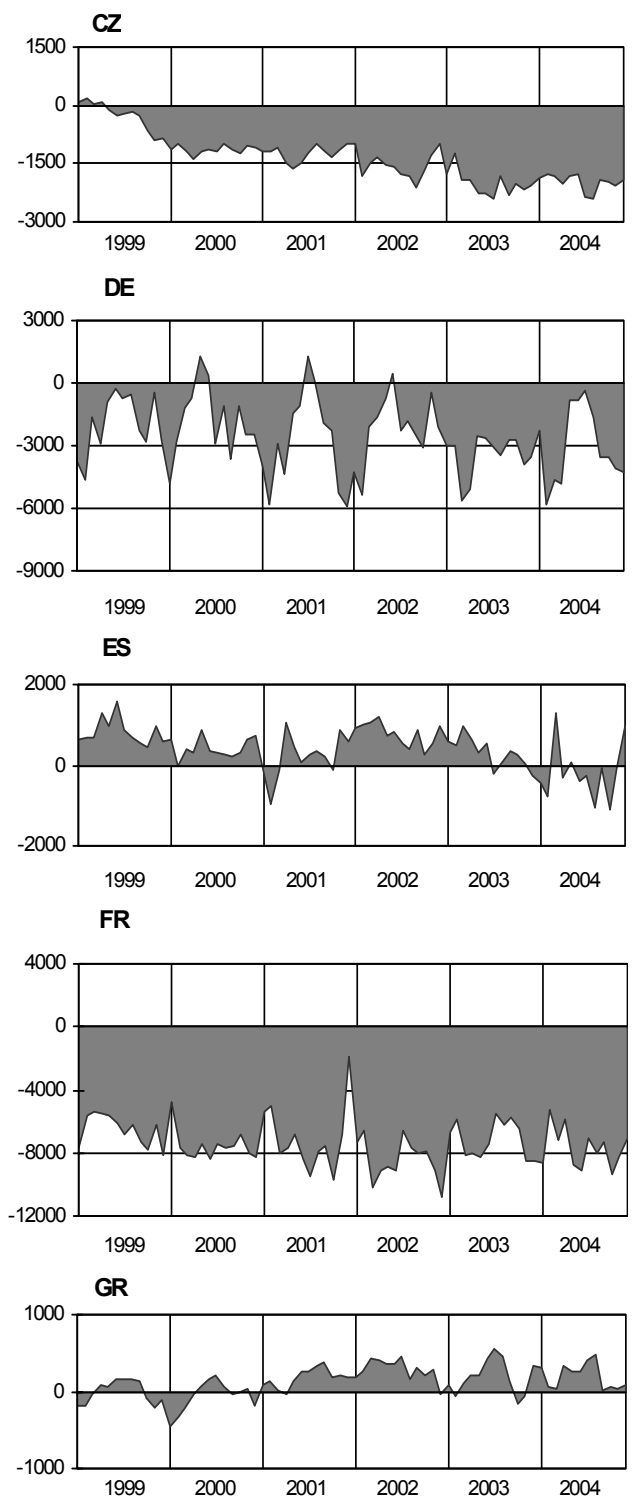
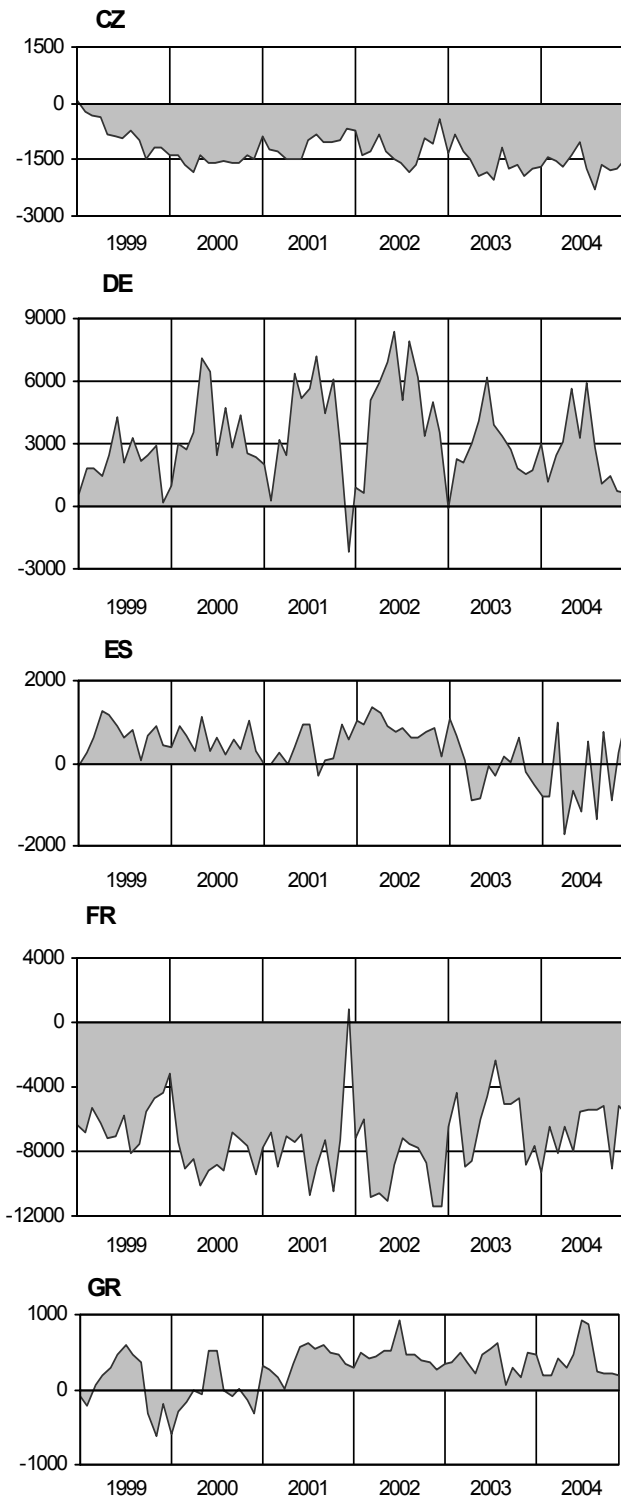
03:00

Night load in MW ¹¹ On the third Wednesday of each month

11:00

Day load in MW ¹

03:00

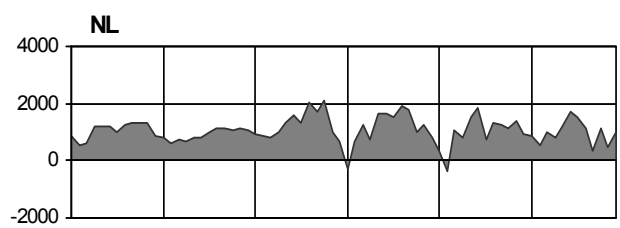
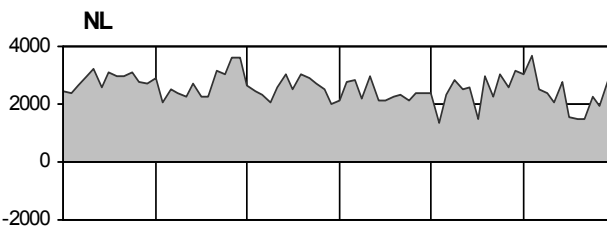
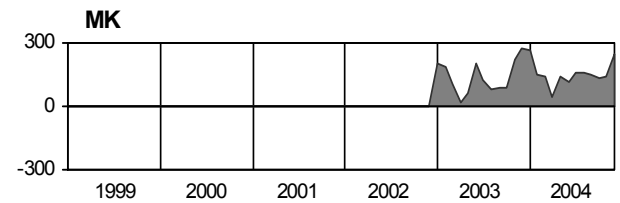
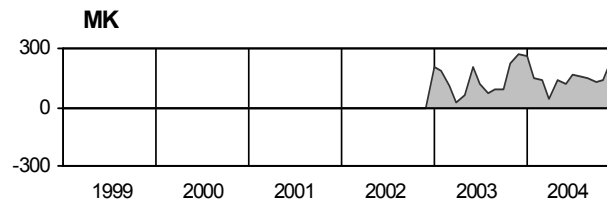
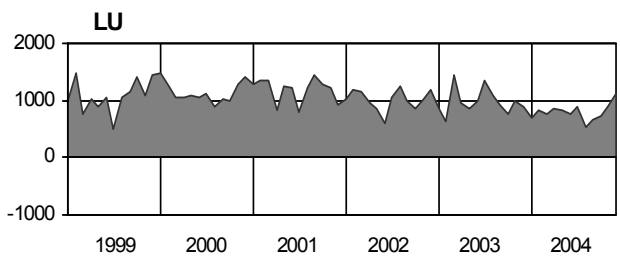
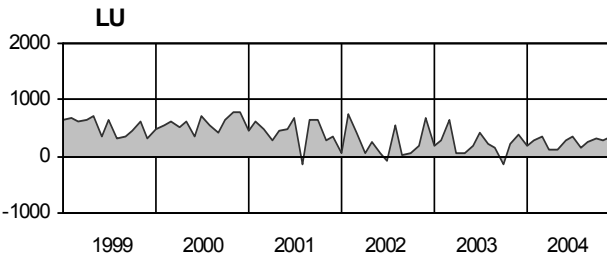
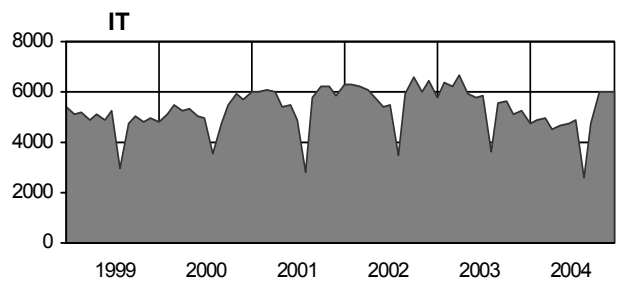
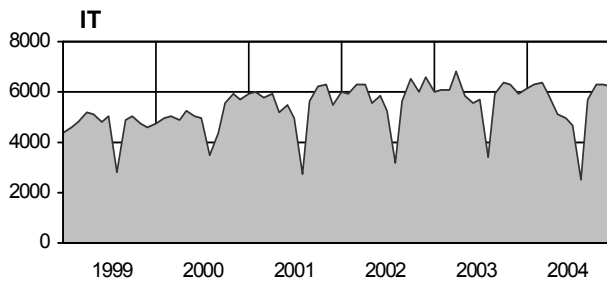
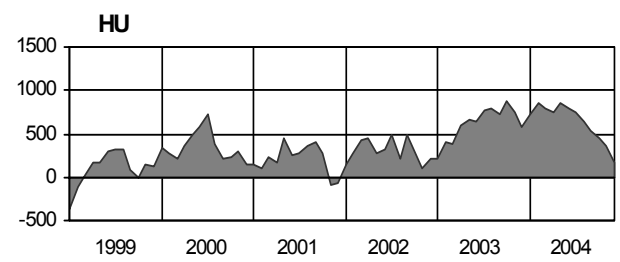
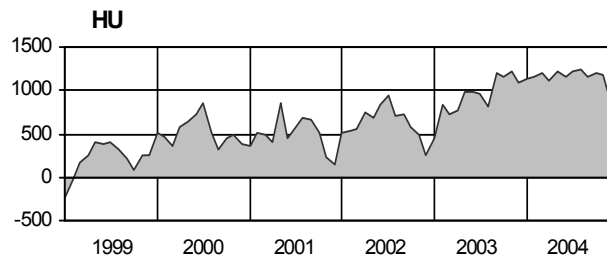
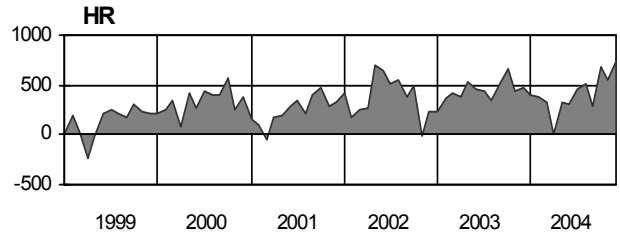
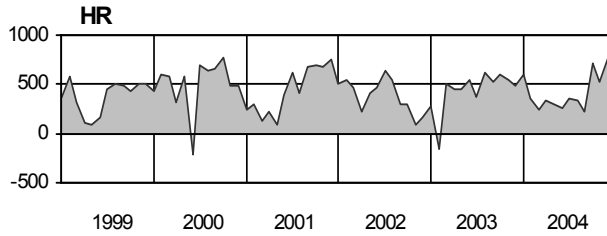
Night load in MW ¹¹ On the third Wednesday of each month

11:00

Day load in MW ¹

03:00

Night load in MW ¹



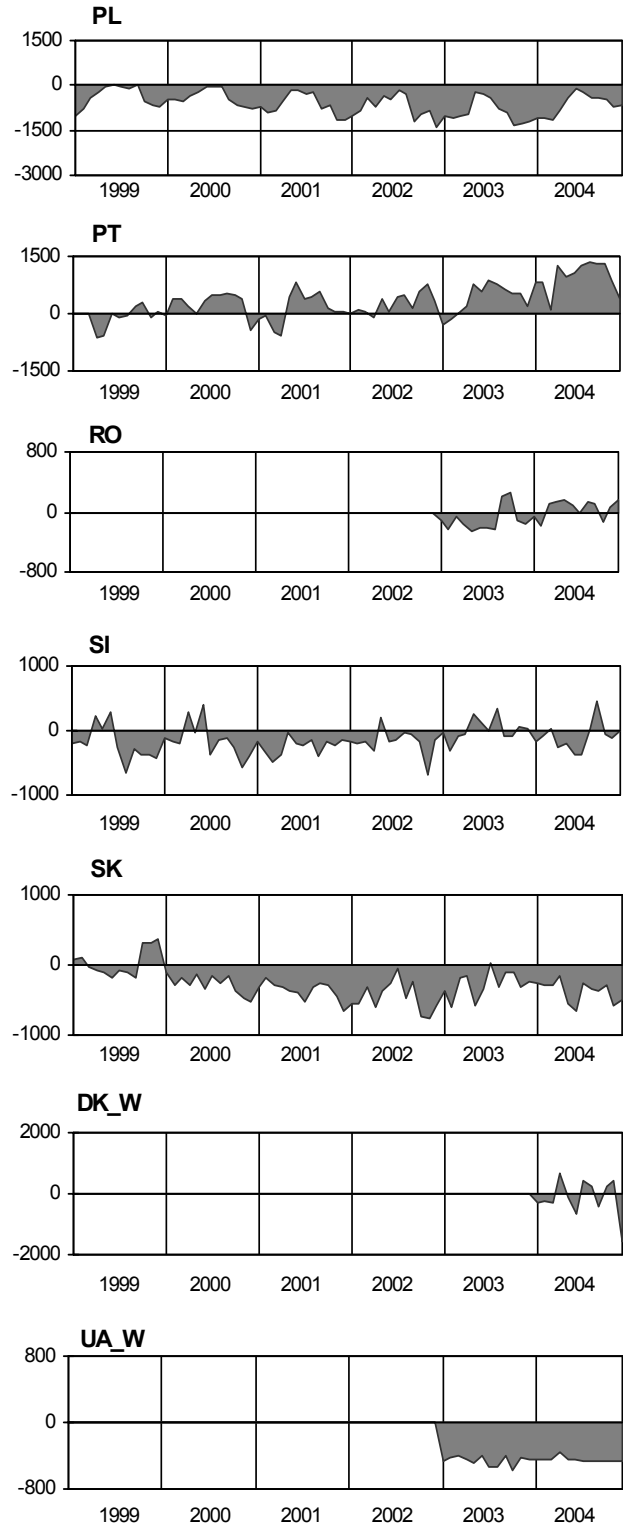
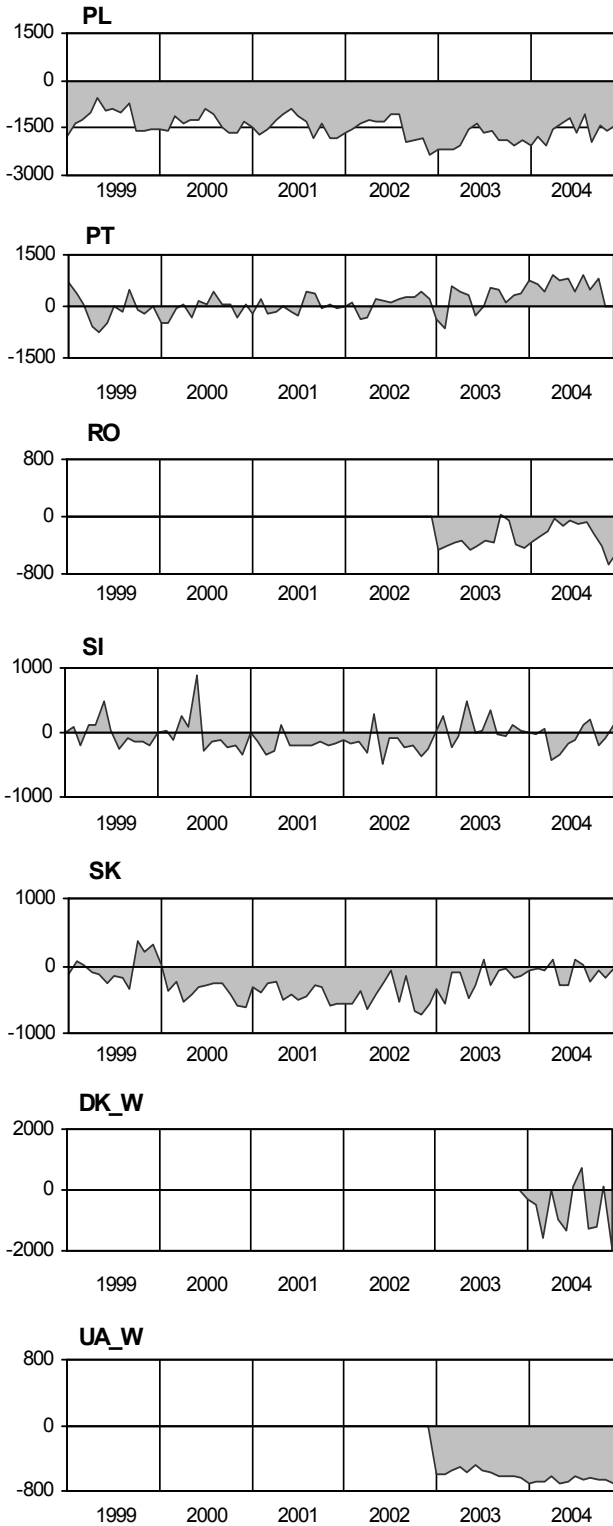
¹ On the third Wednesday of each month

11:00

Day load in MW ¹

03:00

Night load in MW ¹



¹ On the third Wednesday of each month

Development of the balance of the simultaneous power flows across the frontiers of the UCTE countries ¹
MW

Date	Night	Day
I.1999	17246	12177
II.1999	16764	12562
III.1999	14455	12929
IV.1999	16866	15351
V.1999	12400	15475
VI.1999	12526	15400
VII.1999	12755	15345
VIII.1999	9854	13951
IX.1999	14241	16205
X.1999	14959	14752
XI.1999	13756	13180
XII.1999	15628	10459
I.2000	17024	11724
II.2000	17664	14630
III.2000	17267	15400
IV.2000	16786	15903
V.2000	12996	18659
VI.2000	14341	18620
VII.2000	16139	15145
VIII.2000	13993	16018
IX.2000	15786	14995
X.2000	13951	16251
XI.2000	17709	16831
XII.2000	18891	17040
I.2001	19241	15530
II.2001	20576	16165
III.2001	19726	17651
IV.2001	19632	15559
V.2001	15655	17735
VI.2001 ²	21017	24715
VII.2001	19222	25324
VIII.2001	17476	22151
IX.2001	24340	23573
X.2001	24983	25279
XI.2001	28571	24405
XII.2001	27423	21122

Date	Night	Day
I.2002	28647	23600
II.2002	28364	24882
III.2002	23176	25924
IV.2002	25500	24720
V.2002	22660	26484
VI.2002	21746	24905
VII.2002	23635	24549
VIII.2002	21967	23121
IX.2002	26098	22894
X.2002	24076	24634
XI.2002	22212	25754
XII.2002	27435	25747
I.2003 ³	28921	24641
II.2003	24316	22212
III.2003	29221	26150
IV.2003	28527	26909
V.2003	25320	24900
VI.2003	25915	25054
VII.2003	24493	20980
VIII.2003	24256	22918
IX.2003	26076	24320
X.2003	23730	23139
XI.2003	29334	29503
XII.2003	28642	28666
I.2004	26336	26954
II.2004	27452	27601
III.2004	24520	25689
IV.2004	23264	23332
V.2004	21353	24641
VI.2004	21719	21271
VII.2004	21893	23480
VIII.2004	18957	18405
IX.2004	26624	24670
X.2004	28075	28255
XI.2004	29424	26969
XII.2004	34232	27561

¹ Day load at 11.00 a.m. and night load at 3.00 a.m. on the third Wednesday of each month. The power flows crossing common borders with neighbouring third countries are excluded.

² As of June 2001 the power flows include CENTREL countries CZ, HU, PL and SK,

³ From year 2003 the power flows include RO and BG

Country	Thermal conventional		Thermal nuclear		Hydropower		Other sources		Total		Representativity ¹
	MW	Δ% ²	MW	Δ% ²	MW	Δ% ²	MW	Δ% ²	MW	Δ% ²	%
AT³	5900	n.a.	-	-	11700	n.a.	670	n.a.	18270	n.a.	100
BA	1957	0,0	-	-	2064	1,5	-	-	4062	0,8	99
BE	7998	-2,1	5802	0,7	1416	0,6	394	58,9	15610	0,2	99
BG	6420	n.a.	2880	n.a.	2930	n.a.	-	n.a.	12230	n.a.	100
CH	320	4,9	3220	0,0	13315	0,2	540	4,9	17395	0,4	100
CS	6400	0,0	-	-	3497	0,0	-	-	9897	0,0	96
CZ	10591	0,6	3537	0,0	2138	0,5	20	81,8	16286	0,5	100
DE	68100	0,6	20500	0,0	9000	11,1	17300	16,1	114900	3,3	90
ES	32964	19,4	7600	-1,2	18491	1,5	9196	74,0	68251	16,1	100
FR	26908	16,1	63363	0,0	25394	5,7	1056	255,6	116721	2,1	100
GR	7212	2,1	-	-	3060	0,0	380	7,3	10652	1,7	100 ⁴
HR	1662	-0,5	-	-	2079	0,4	5	0,0	3746	0,1	100
HU	5685	0,5	1755	0,0	46	-4,2	790	46,8	8276	3,5	100
IT	58990	5,3	-	-	20744	0,4	1777	15,2	81511	4,2	100
LU	477	0,6	-	-	1128	0,0	60	39,5	1665	1,2	96
MK	907	0,0	-	-	503	20,3	-	-	1410	6,4	100
NL	18770	4,0	449	0,0	37	0,0	1896	-6,5	21152	2,9	100
PL	29350	-0,3	-	-	2193	0,0	145	98,6	31688	-0,1	100
PT	6178	8,0	-	-	4717	3,6	825	113,2	11720	7,6	94
RO	10081	3,1	655	0,0	6007	0,6	-	-	16743	2,1	100
SI	1262	0,0	670	0,0	862	2,6	-	-	2794	0,8	100
SK	2290	0,0	2640	0,0	2429	0,0	699	-0,1	8058	0,0	100
UCTE⁵	310422	7,0	113071	2,6	133750	4,7	35753	29,6	592996	5,7	
DK_W	5098	0,3	-	-	11	0,0	2379	0,2	7488	-0,7	100
UA_W	2347	0,0	-	-	27	0,0	-	-	2374	0,0	100

¹ Percentage as referred to the total values of a country

(The total values of a country are defined as the synchronously interconnected system plus the areas directly connected via AC or DC to the mainland system.)

² As compared to the last year

³ Values as of 31 December 2003

⁴ The values for Greece refer to the interconnected system and not to the whole country.

⁵ Without Bulgarian values 2003

UCTE System Adequacy Retrospect 2004, Power Data
net values at the reference time 11:00 a.m. on the 3rd Wednesday of each month (Data published on 1 June 2005) **Values in GW**

T8a

	Jan.	Feb.	March	April	May	June	July	Aug.	Sept.	Oct.	Nov.	Dec.
National generating capacity												
1. Hydro power stations	132.2	132.2	132.3	132.1	132.1	132.3	132.5	132.4	132.4	132.5	132.6	132.6
2. Nuclear power stations	113.3	113.3	113.3	113.3	113.3	113.3	113.3	113.3	113.3	113.3	113.3	113.3
3. Conventional thermal power stations	303.4	303.6	304.4	305.9	306.6	307.1	309.0	311.0	311.4	311.8	312.3	312.6
4. Renewable energy sources	27.7	28.2	28.6	29.0	29.4	29.6	30.1	30.6	30.8	31.5	32.1	32.9
5. Not clearly identifiable energy sources	1.7	1.7	1.7	1.8	1.8	1.8	1.8	1.8	1.8	1.8	1.8	1.8
6. National generating capacity (6 = 1+2+3+4+5)	578.4	579.0	580.3	582.1	583.1	584.1	586.7	589.1	589.7	591.0	592.0	593.2
7. Non-usable capacity	100.7	101.4	106.6	108.6	109.0	112.8	117.0	119.8	114.4	106.4	107.6	109.7
8. Overhauls (thermal power stations)	11.6	18.5	31.9	45.8	56.5	52.8	47.6	51.7	41.5	36.6	25.2	7.9
9. Outages (thermal power stations)	15.2	17.2	19.2	15.7	16.8	13.1	15.2	16.9	20.2	17.1	12.4	15.8
10. System services reserve	31.5	28.3	29.1	28.2	27.0	27.0	26.6	29.3	26.2	29.3	31.0	28.7
11. Reliably available capacity (11 = 6-(7+8+9+10))	419.4	413.6	393.4	383.7	373.8	378.4	380.3	371.3	387.4	401.5	416.0	431.2
12. Load	348.1	343.1	314.6	309.1	299.4	304.6	312.7	279.7	310.2	320.5	342.0	360.6
13. Margin against monthly peak load	31.5	30.4	45.9	34.7	29.0	24.1	21.1	45.3	25.4	24.4	35.2	31.0
14. Remaining capacity without exchanges (14 = 11-12)	71.2	70.5	78.9	74.6	74.4	73.8	67.6	91.6	77.2	80.9	74.0	70.6
Physical exchanges												
15. Import	38.2	39.1	37.1	33.6	33.2	30.0	33.1	28.8	34.3	37.3	39.8	38.2
16. Export	37.0	35.6	33.4	31.8	32.9	30.4	33.9	29.9	34.9	38.8	36.2	34.7
17. Physical exchange balance (17=15-16)	1.2	3.4	3.7	1.8	0.3	-0.4	-0.8	-1.2	-0.5	-1.5	3.6	3.4
18. Remaining capacity with exchange (18=14+17)	72.4	73.9	82.6	76.4	74.7	73.3	66.8	90.5	76.6	79.4	77.6	74.0

T8b

UCTE System Adequacy Retrospect 2004, Energy Data (Data published on 1 June 2005)

Values in TWh

	AT	BA	BE	BG	CH	CS	CZ	DE	ES	FR	GR	HR	HU	IT	LU	MK	NL	PL	PT	RO	SI	SK	UCTE	UA_W
Generation																								
1. Hydro power stations	34.4	6.0	1.6	3.3	35.1	13.4	2.6	26.7	33.9	64.5	4.9	7.0	0.2	47.9	0.8	1.5	0.1	3.5	9.9	16.3	3.6	4.0	321.3	0.1
2. Nuclear power stations	0.0	0.0	44.9	15.4	25.4	0.0	24.8	158.4	60.9	426.8	0.0	0.0	11.2	0.0	0.0	0.0	3.6	0.0	0.0	5.1	5.2	15.7	797.5	0.0
3. Conventional thermal power stations	17.2	6.6	34.8	16.7	2.9	25.3	50.5	352.2	129.4	51.8	43.2	5.4	16.6	231.8	3.1	4.7	86.4	138.3	27.8	30.5	4.6	6.0	1293.4	7.5
4. Renewable energy sources	1.4	0.0	0.1	0.0	0.9	0.0	0.0	32.8	18.7	3.5	1.0	0.0	0.8	6.9	0.1	0.0	4.0	0.4	1.7	0.0	0.0	0.0	72.3	0.0
5. Not clearly identified energy sources	4.8	0.0	0.0	0.0	0.0	0.0	0.0	0.0	0.0	0.0	0.0	0.0	2.0	0.0	0.0	0.0	0.0	0.0	0.0	0.0	0.0	2.6	9.4	0.0
6.Total (6 = 1+2+3+4+5)	57.8	12.6	81.4	35.4	64.4	38.7	77.9	570.1	242.9	546.6	49.1	12.4	30.8	286.6	4.0	6.2	94.1	142.2	39.4	51.9	13.4	28.3	2493.9	7.7
7. Exchanges (7 = 7a - 7b)	3.2	-1.9	7.8	-5.9	0.8	2.0	-15.7	-7.3	-3.0	-62.1	2.8	3.7	7.5	45.7	3.4	1.2	16.2	-9.3	6.5	-1.1	-0.8	-1.9	-11.5	-3.3
7a.Import	16.5	1.7	14.6	0.7	26.1	6.0	9.8	44.2	8.1	6.6	4.9	10.1	13.8	46.5	6.5	2.0	21.4	5.3	8.6	1.7	4.3	8.7	269.6	1.6
7b.Export	13.3	3.6	6.8	6.6	25.3	4.0	25.5	51.5	11.1	68.7	2.0	6.4	6.3	0.8	3.1	0.8	5.2	14.6	2.1	3.0	5.0	10.6	281.2	4.9
8. Pumped storage	3.0	0.0	1.7	0.3	2.4	0.8	0.7	7.9	4.6	7.3	0.8	0.1	0.0	10.3	1.1	0.0	0.0	2.2	0.4	0.0	0.0	0.1	43.8	0.0
9. Consumption (9 = 6+7-8)	56.6	10.7	87.5	29.5	60.0	39.9	61.5	554.0	235.1	477.2	51.2	16.0	38.3	322.0	6.3	7.4	111.1	130.6	45.5	50.7	12.6	26.3	2434.5	4.4

