



November 2008

Monthly provisional values

union for the co-ordination of transmission of electricity



Table of contents		Page
1	Electricity supply situation of the countries	2
2	Physical energy flows	3
3	Monthly consumption	4
4	Monthly consumption variation	6
5	Consumption of the last 12 months	8
6	Variation of the last 12 months' consumption	10
7	Load flows (night)	12
8	Load flows (day)	13
9	Unavailability of international tie lines (major events)	14
10	Network reliability (major events)	16
11	Scheduled exchanges	17
12	Load on the 3 rd Wednesday	18

General remarks and abbreviations used in the tables

- All values of production and consumption in chapter 1, 3&4, 5&6 and 12 are calculated to represent 100% of the national values.
- DK_W Denmark West represents the Western part of Denmark synchronously interconnected with UCTE (Jutland and Funen).
- UA_W Ukraine West represents the so-called Burshtyn Island synchronously interconnected with UCTE.
- CET Central European Time
- The Bulgarian load values on the 3rd Wednesday are gross values

Countries	Net production in GWh							Exchange balance in GWh	Pump in GWh	Consumption in GWh			
	Therm. nuclear	Fossil fuels	Hydro prod	Other renew.	Of which wind	Non identifiable	Total			monthly	var. [%]	last 12 months	var. [%]
AT	0	2174	2246	0	0	712	5132	952	322	5762	-4,9	68604	2,1
BA	0	800	343	0	0	0	1143	-150	0	993	-2,3	11602	4,3
BE ²	3945	2429	157	360	61	0	6891 ¹	642	160	7373	-8,0	90211	0,2
BG	1392	2176	160	0	0	0	3728	-668	78	2982	-3,8	34784	5,9
CH	2338	174	2660	95	2	0	5267 ¹	537	166	5638	-3,1	64459	2,6
CZ	1627	4455	163	30	28	0	6275 ¹	-571	66	5638	-7,9	65630	2,1
DE	11971	30001	1560	6411	4385	0	49943 ¹	-2896	619	46428	-3,2	558645	0,3
DK_W	0	1723	2	707	556	0	2432 ¹	-540	0	1892	-3,2	21746	-0,1
ES	4030	14074	1870	3847	3365	32	23853	-948	411	22495	-2,6	271895	1,9
FR	36113	6177	4926	968	602	0	48184 ¹	-3389	617	44178	-4,1	494012	3,4
GR	0	3624	199	145	127	0	3968 ¹	447	104	4311	-2,9	56501	1,7
HR	0	456	427	4	4	0	887 ¹	597	9	1475	-6,1	17952	4,1
HU	1332	2224	0	0	0	0	3556 ¹	107	0	3663	2,2	41618	1,1
IT	0	19192	3791	887	485	0	23870	3610	700	26780	-6,2	338309	-0,4
LU	0	260	82	13	6	0	355	236	97	494	-17,8	6799	0,5
ME	0	114	159	0	0	0	273	102	0	375	-10,3	4631	n.a.
MK	0	476	60	0	0	0	536	169	0	705	-16,5	8802	3,8
NL	351	8154	0	718	449	0	9223 ¹	950	0	10173	0,7	118763	1,6
PL ³	0	11899	188	138	124	0	12225 ¹	-78	76	12071	-5,5	143612	1,5
PT	0	2587	305	718	584	0	3610 ¹	877	50	4437	2,0	52028	1,1
RO	920	3113	935	0	0	0	4968 ¹	-340	4	4624	-5,9	55632	3,3
RS	0	2865	611	0	0	0	3476	111	106	3481	-2,2	39003	n.a.
SI	500	348	358	0	0	0	1206 ¹	-144	0	1062	-8,1	12852	-4,3
SK	1468	630	234	29	0	0	2361 ¹	11	24	2348	-6,0	27871	1,5
UCTE	65987	120125	21436	15070	10717	744	223362 ¹	-376	3609	219378	-4,0	2605961	1,9
UA_W	0	709	7	0	0	0	716	-337	0	379	-8,0	4194	-0,9

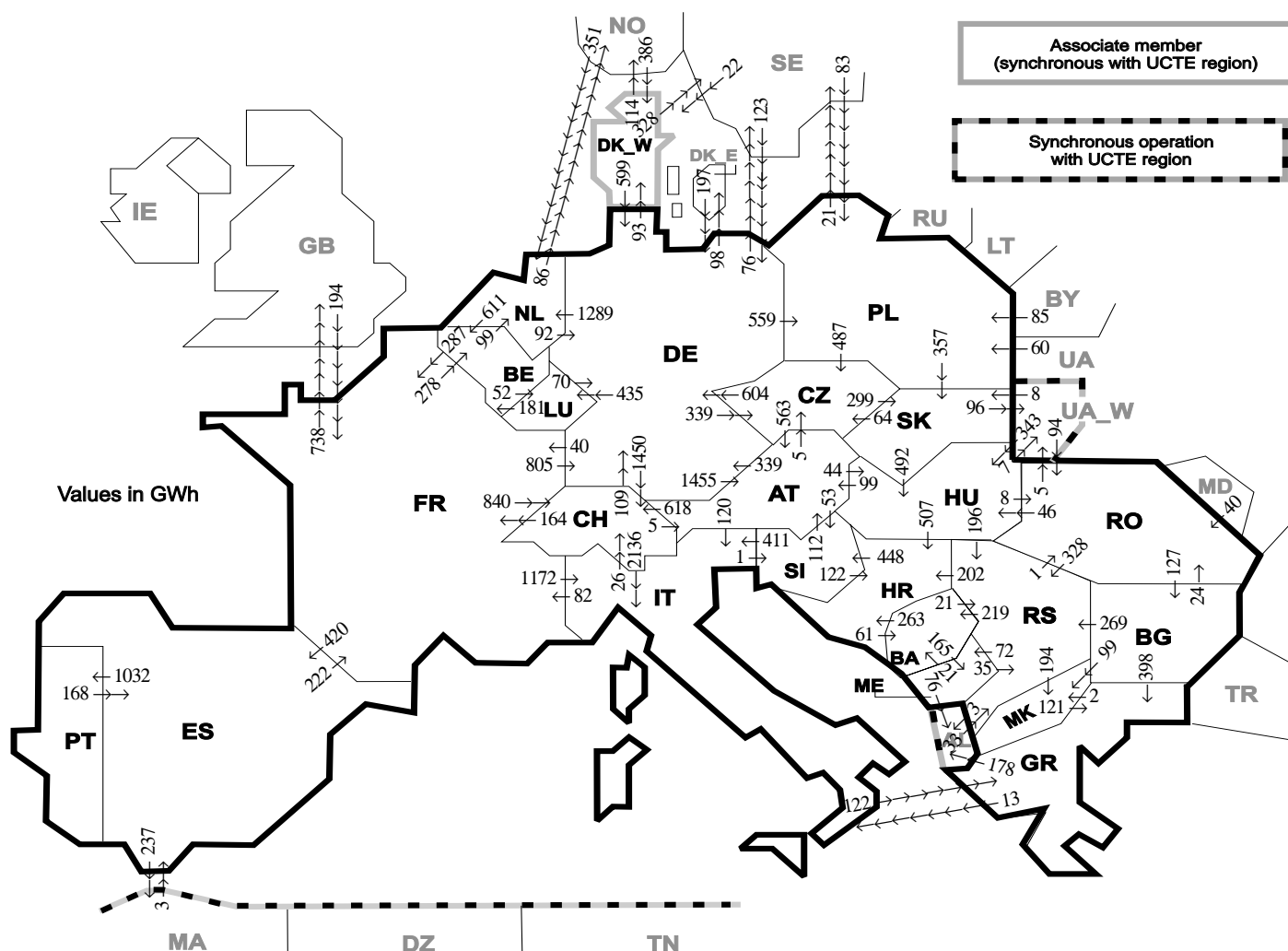
¹ Including deliveries from industry

² The reported figures are best estimates based on actual measurements and extrapolations

³ Operational data

All representativities of the national production and consumption values used to calculate values at a representativity of 100% as stated in the table above:

Countries	AT	BA	BE	BG	CH	CZ	DE	DK_W	ES	FR	GR	HR	HU	IT	LU	ME	MK	NL	PL	PT	RO	RS	SI	SK	UA_W
Production																									
Therm.nuclear	100	100	100	100	100	100	100	100	100	100	100	100	100	100	100	100	100	100	100	100	100	100	100	100	100
Fossil fuels	100	100	100	100	100	100	100	100	97	100	100	100	100	100	100	100	100	100	100	95	100	100	100	100	100
Hydro prod	100	100	100	100	100	100	100	100	100	100	100	100	100	100	100	100	100	100	100	100	100	100	100	100	100
Other renew.	100	100	100	100	100	100	100	100	95	100	100	100	100	100	100	100	100	100	100	100	100	100	100	100	100
Non identifiable	100	100	100	100	100	100	100	100	100	100	100	100	100	100	100	100	100	100	100	100	100	100	100	100	100
Consumption	100	100	100	100	100	100	100	100	98	100	100	100	100	100	100	100	100	100	100	97	100	100	100	100	100



Exporting countries	AT	BA	BE	BG	CH	CZ	DE	DK_W	ES	FR	GR	HR	HU	IT	LU	ME	MK	NL	PL	PT	RO	RS	SI	SK	UA_W	Other III ¹	Sum export
AT	-	-	-	618	5	339	-	-	-	-	-	-	44	120	-	-	-	-	-	-	-	53	-	-	-	-	1179
BA	-	-	-	-	-	-	-	-	-	-	-	263	-	-	-	165	-	-	-	-	-	21	-	-	-	-	449
BE	-	-	-	-	-	-	-	-	287	-	-	-	-	52	-	-	99	-	-	-	-	-	-	-	-	-	438
BG	-	-	-	-	-	-	-	-	-	398	-	-	-	-	-	99	-	-	-	-	24	269	-	-	-	0	790
CH	5	-	-	-	-	109	-	-	164	-	-	-	-	2136	-	-	-	-	-	-	-	-	-	-	-	-	2414
CZ	563	-	-	-	-	-	604	-	-	-	-	-	-	-	-	-	-	0	-	-	-	-	-	299	-	-	1466
DE	1455	-	-	1450	339	-	93	-	40	-	-	-	-	435	-	-	1289	559	-	-	-	-	-	-	-	174	5834
DK_W	-	-	-	-	-	-	599	-	-	-	-	-	-	-	-	-	-	-	-	-	-	-	-	-	-	442	1041
ES	-	-	-	-	-	-	-	-	222	-	-	-	-	-	-	-	-	-	-	1032	-	-	-	-	-	-	1491
FR	-	-	278	840	805	420	-	-	-	-	-	-	-	1172	-	-	-	-	-	-	-	-	-	-	-	738	4253
GR	-	-	-	0	-	-	-	-	-	-	-	-	-	13	-	-	2	-	-	-	-	-	-	-	-	178	193
HR	-	61	-	-	-	-	-	-	-	-	-	-	0	-	-	-	-	-	-	-	-	0	448	-	-	-	509
HU	99	-	-	-	-	-	-	-	-	-	-	507	-	-	-	-	-	-	-	-	8	196	0	7	-	-	817
IT	0	-	-	26	-	-	-	-	82	122	-	-	-	-	-	-	-	-	-	-	-	1	-	-	-	-	231
LU	-	-	181	-	-	70	-	-	-	-	-	-	-	-	-	-	-	-	-	-	-	-	-	-	-	-	251
ME	-	21	-	-	-	-	-	-	-	-	-	-	-	-	-	-	-	-	-	-	-	35	-	-	-	76	132
MK	-	-	-	0	-	-	-	-	-	-	121	-	-	-	-	-	-	-	-	-	-	-	0	-	-	-	121
NL	-	-	611	-	-	92	-	-	-	-	-	-	-	-	-	-	-	-	-	-	-	-	-	-	-	86	789
PL	-	-	-	-	487	0	-	-	-	-	-	-	-	-	-	-	-	-	-	-	-	-	357	-	21	-	865
PT	-	-	-	-	-	-	-	-	168	-	-	-	-	-	-	-	-	-	-	-	-	-	-	-	-	-	168
RO	-	-	-	127	-	-	-	-	-	-	-	-	46	-	-	-	-	-	-	-	-	-	-	-	5	0	506
RS	-	219	-	0	-	-	-	-	-	-	-	202	0	-	72	194	-	-	-	-	1	-	-	-	-	3	691
SI	112	-	-	-	-	-	-	-	-	-	122	-	411	-	-	-	-	-	-	-	-	-	-	-	-	-	645
SK	-	-	-	-	64	-	-	-	-	-	-	-	492	-	-	-	-	-	-	-	-	-	-	-	96	-	652
UA_W	-	-	-	-	-	-	-	-	-	-	-	-	343	-	-	-	-	-	-	-	94	-	-	8	-	-	445
Other III ¹	-	-	-	0	-	320	408	3	194	0	-	-	-	-	0	-	351	228	-	40	33	-	-	-	-	-	1577
Sum imp	2234	301	1070	127	2934	895	2938	501	591	989	641	1094	925	3852	487	237	295	1739	787	1032	167	882	502	664	108	1955	27947

Sum of physical energy flows between UCTE countries = 23862GWh Total physical energy flows = 27947GWh

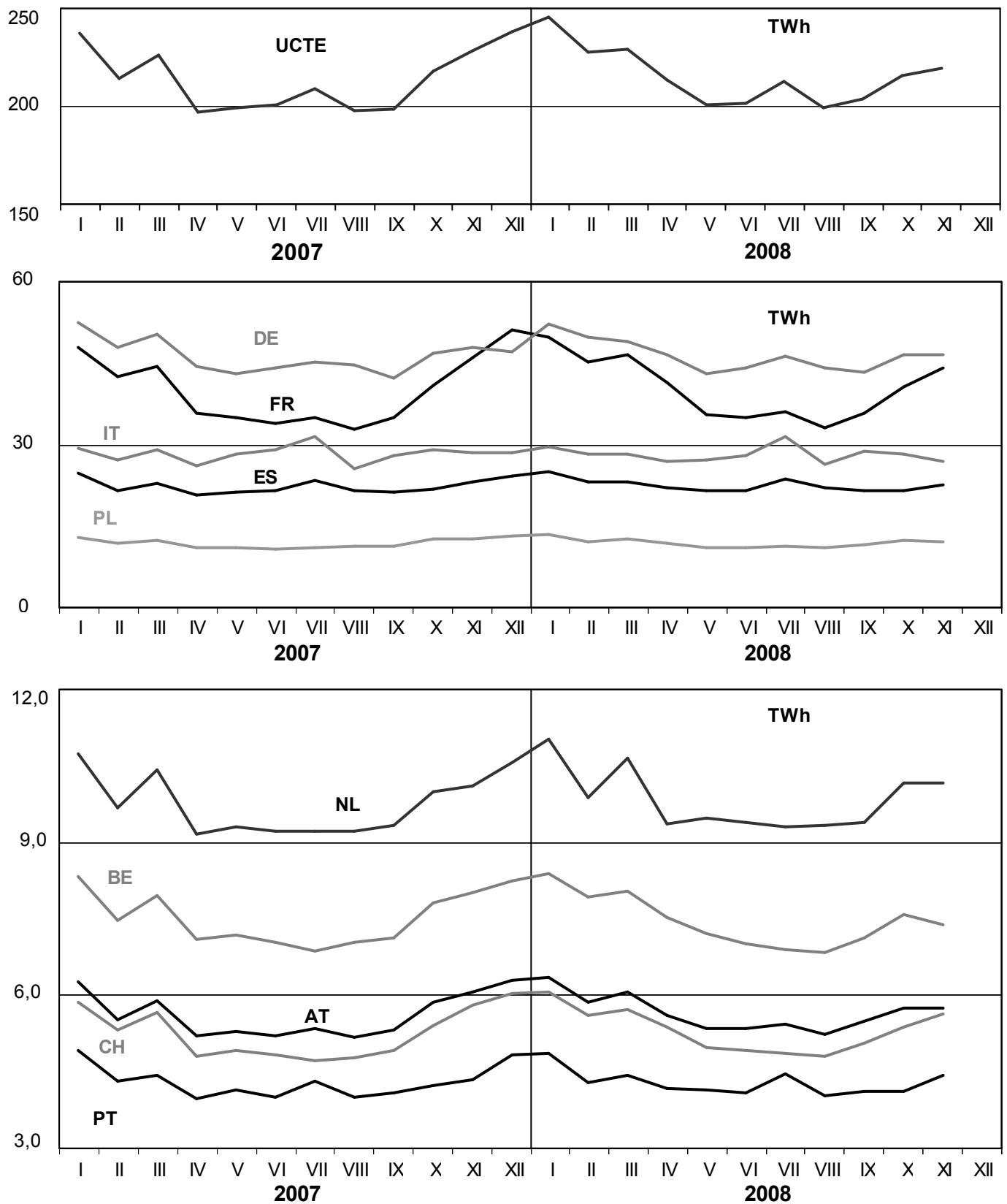
¹ Other III: Albania, Belarus, Denmark East, Great Britain, Morocco, Republic of Moldavia, Norway, Sweden, Republic of Turkey and Ukraine

These physical energy flows were measured on the cross-frontier transmission lines (≤ 110 kV) listed in table 9 of the Statistical Yearbook. These values may differ from the official statistics and the exchange balances in chapter 1.

3

Monthly consumption

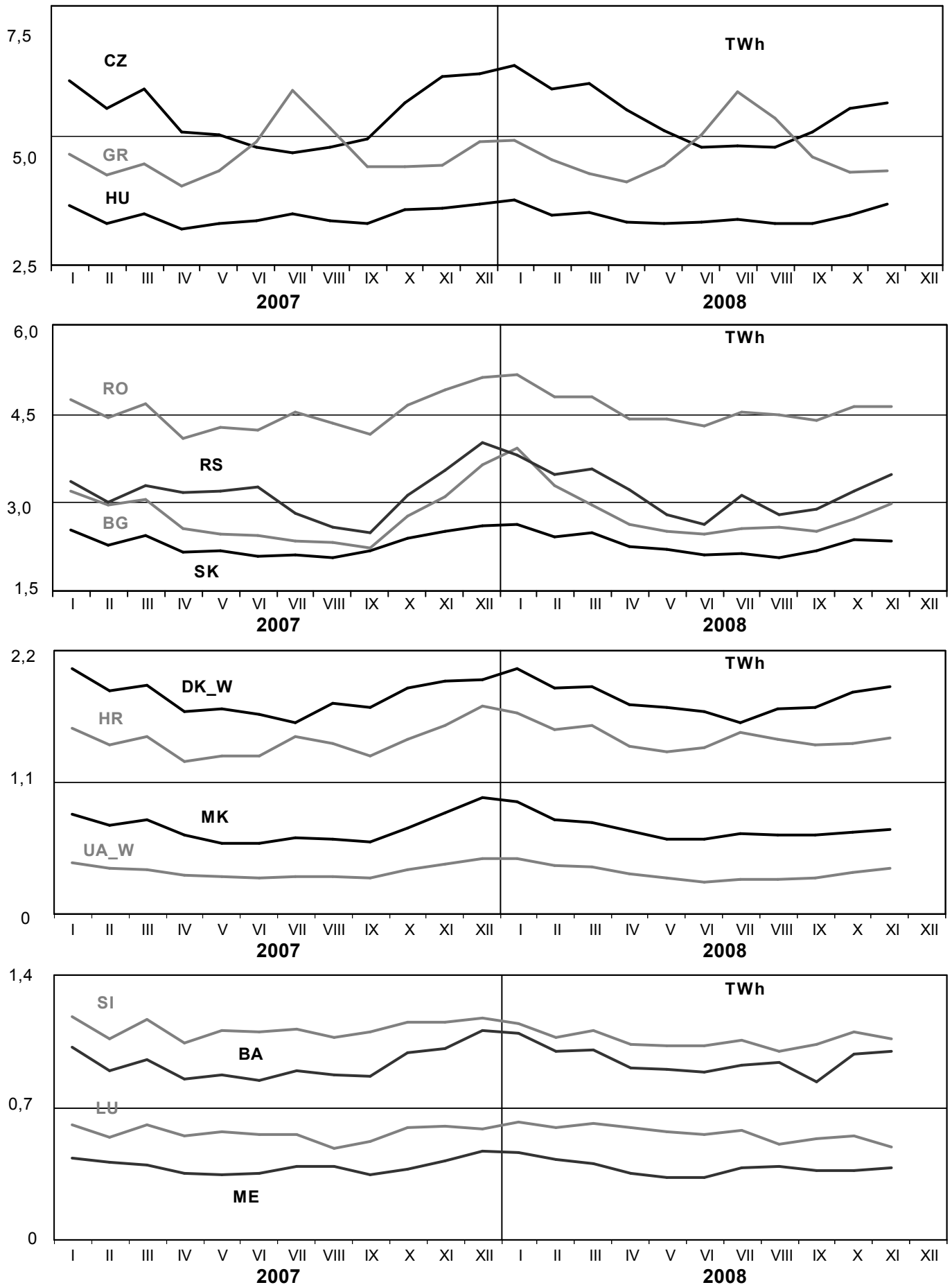
November 2008



3

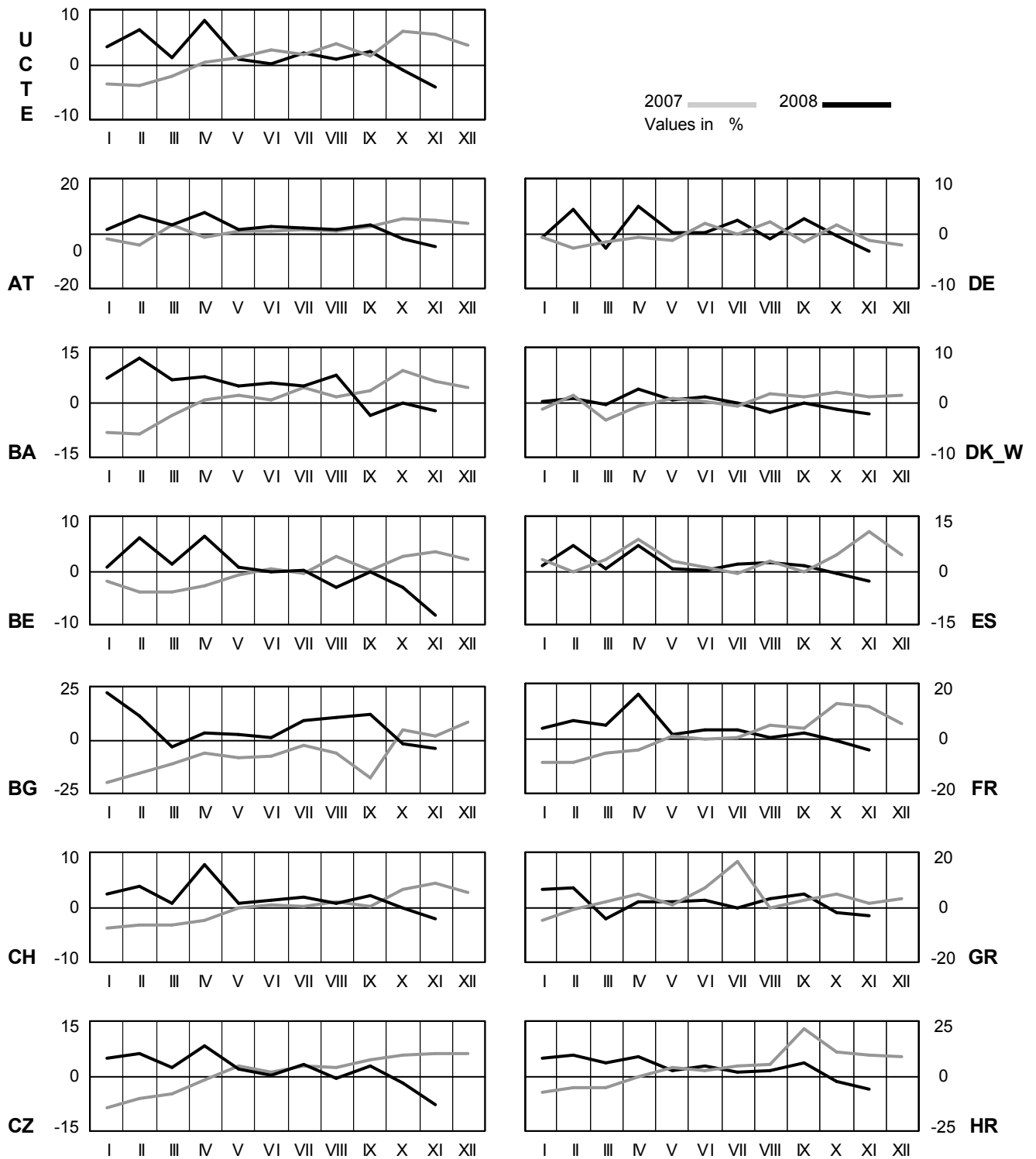
Monthly consumption

November 2008



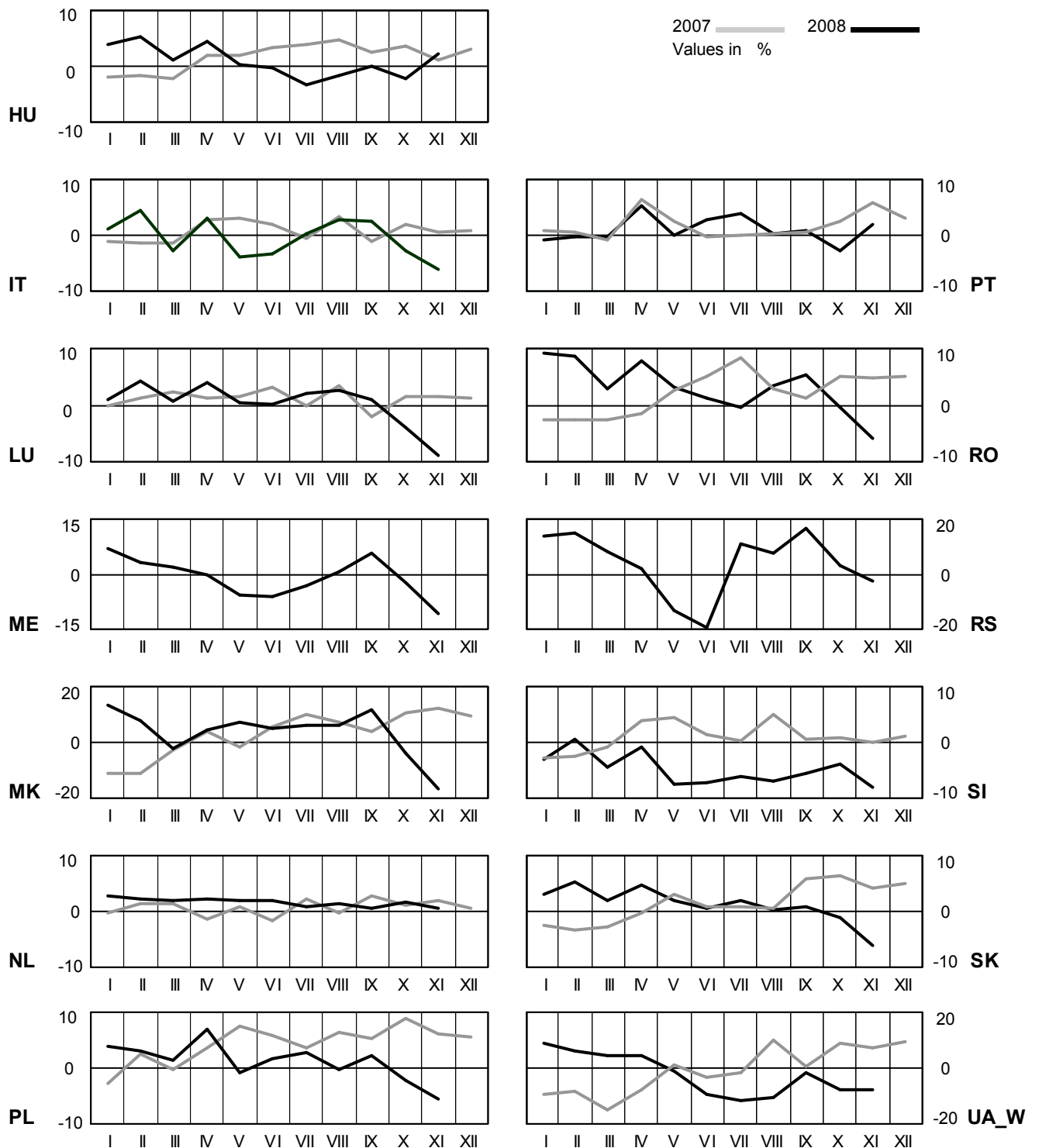
4 Monthly consumption variation

November 2008



4 Monthly consumption variation

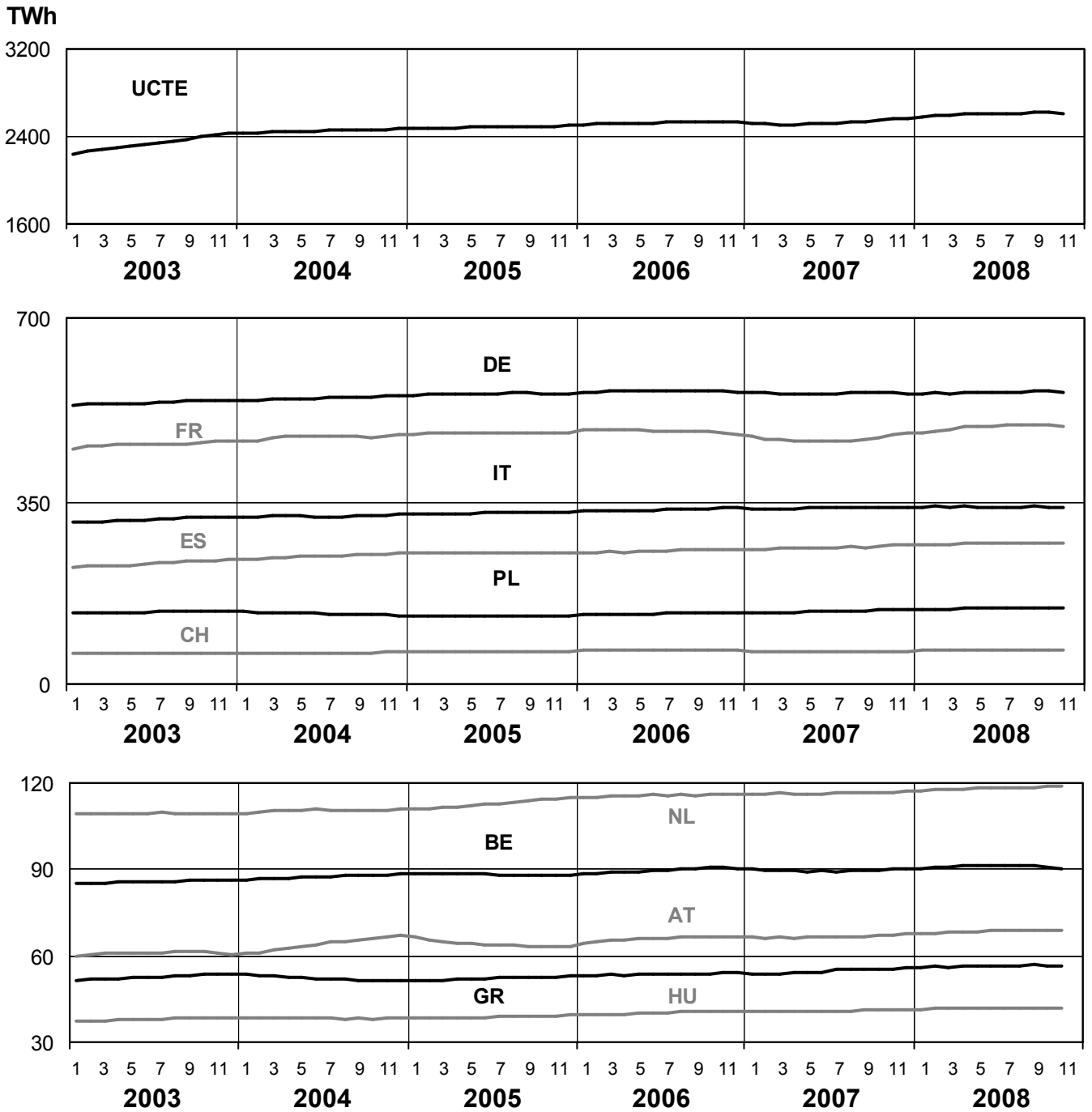
November 2008



5

Consumption of the last 12 months

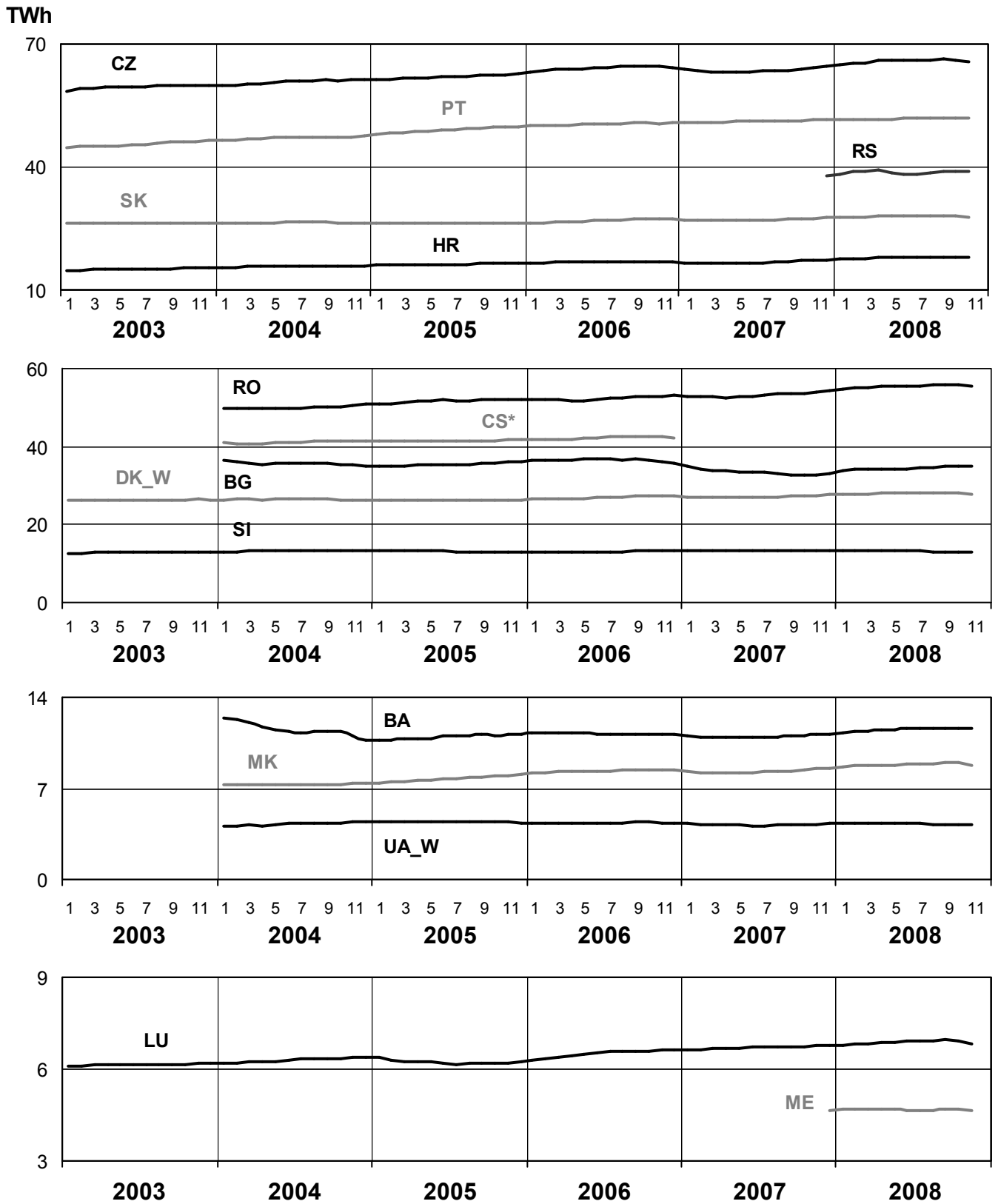
November 2008



5

Consumption of the last 12 months

November 2008

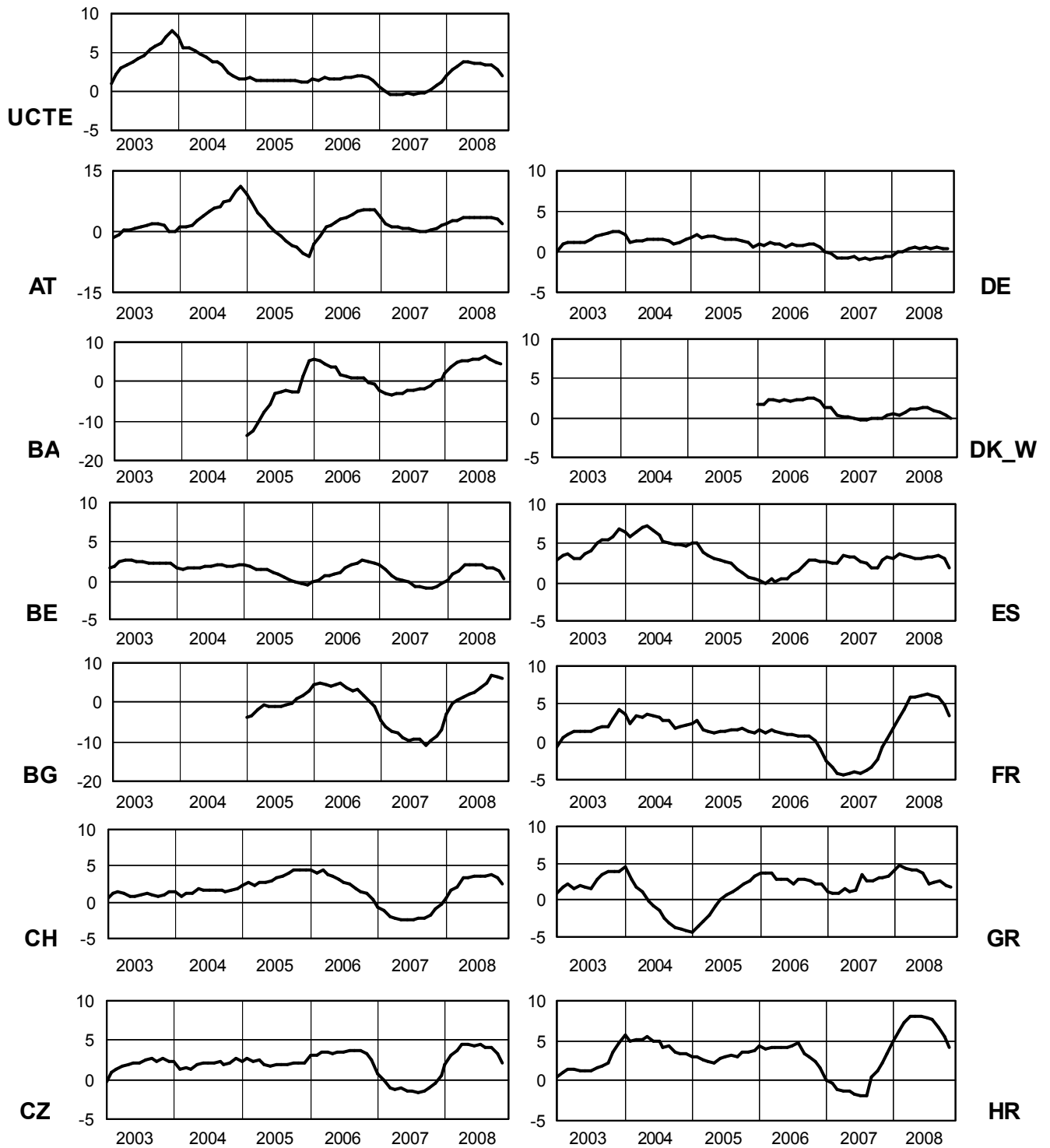


* CS consumption values until December 2006; from 2007 on ME and RS as separate countries

6

Variation of the last 12 months' consumption in %

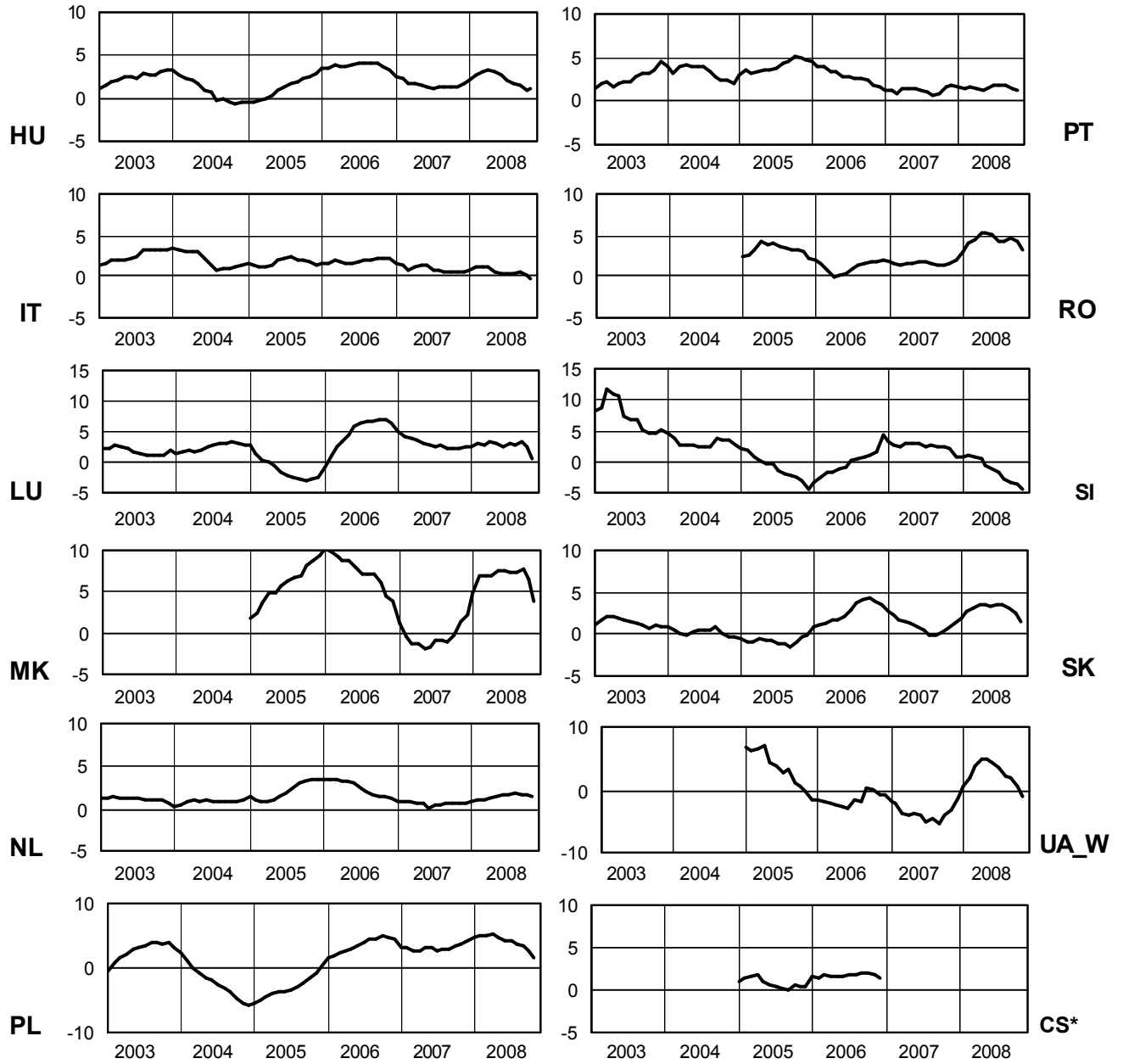
November 2008



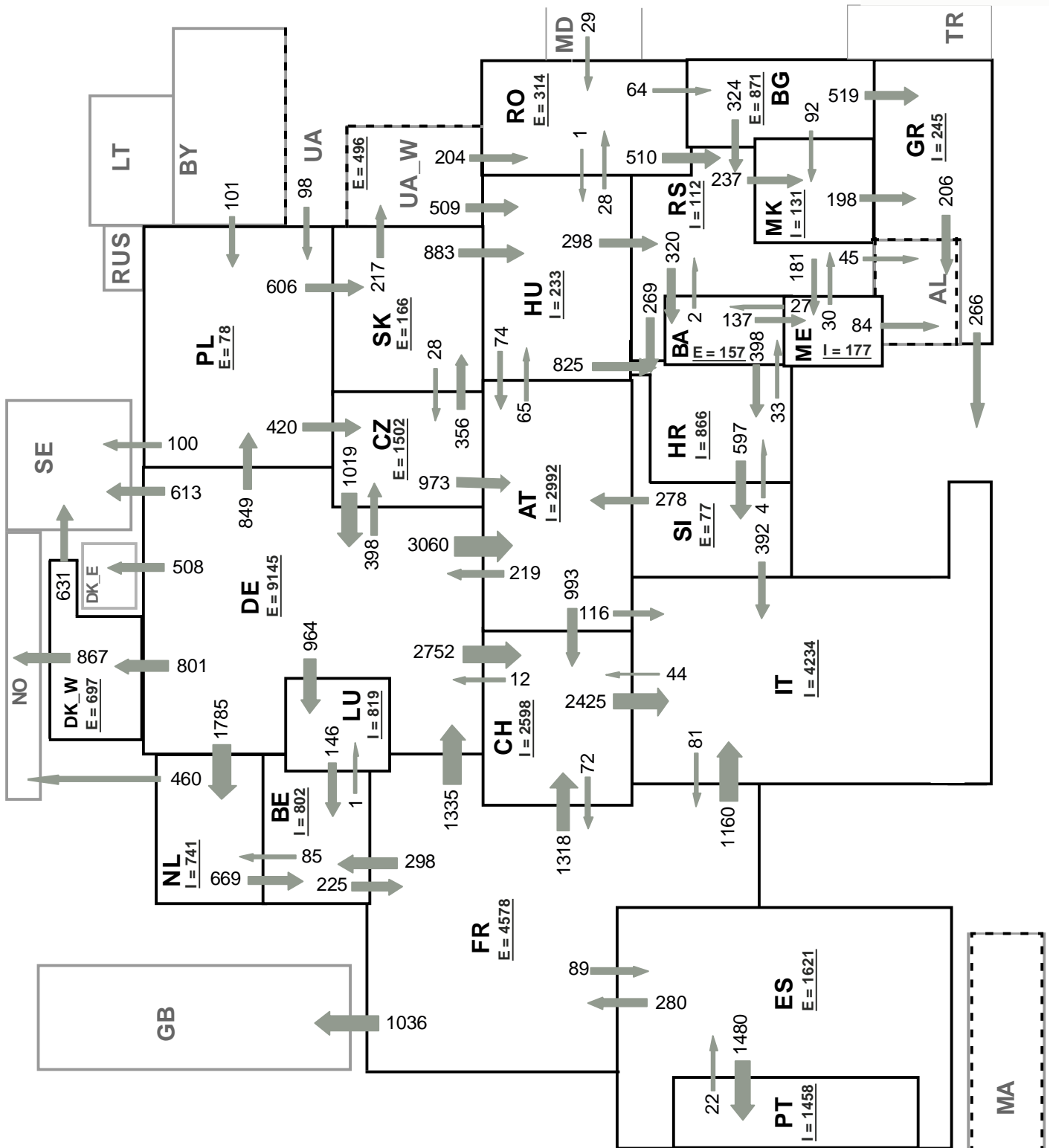
6

Variation of the last 12 months' consumption in %

November 2008



* CS consumption values until December 2006; from 2007 on ME and RS as separate countries



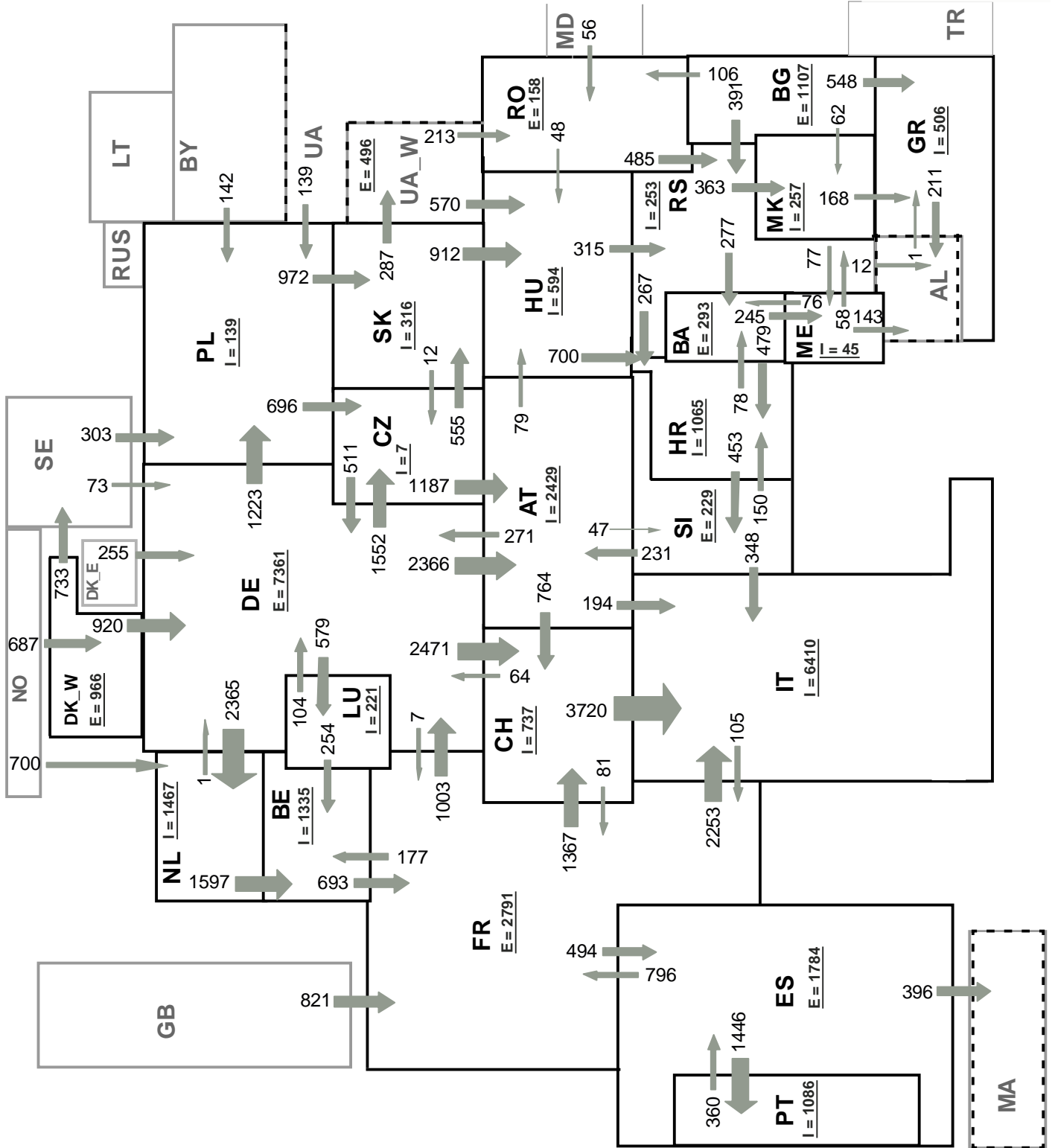
Sum of load flows in MW

UCTE = 32133 MW

Total = 37869 MW

Synchronous operation with UCTE region

I = Import balance
E = Export balance



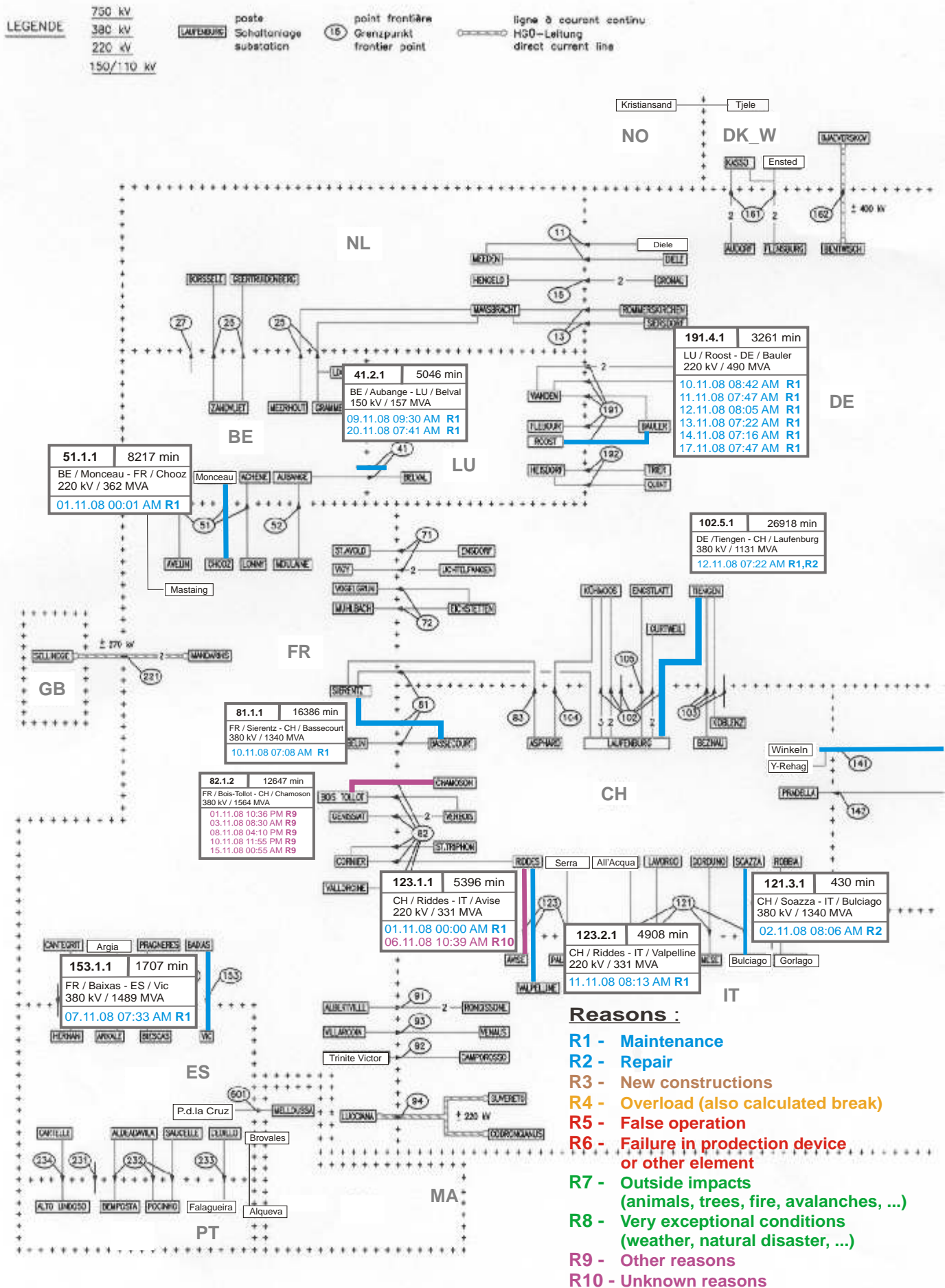
Sum of load flows in MW

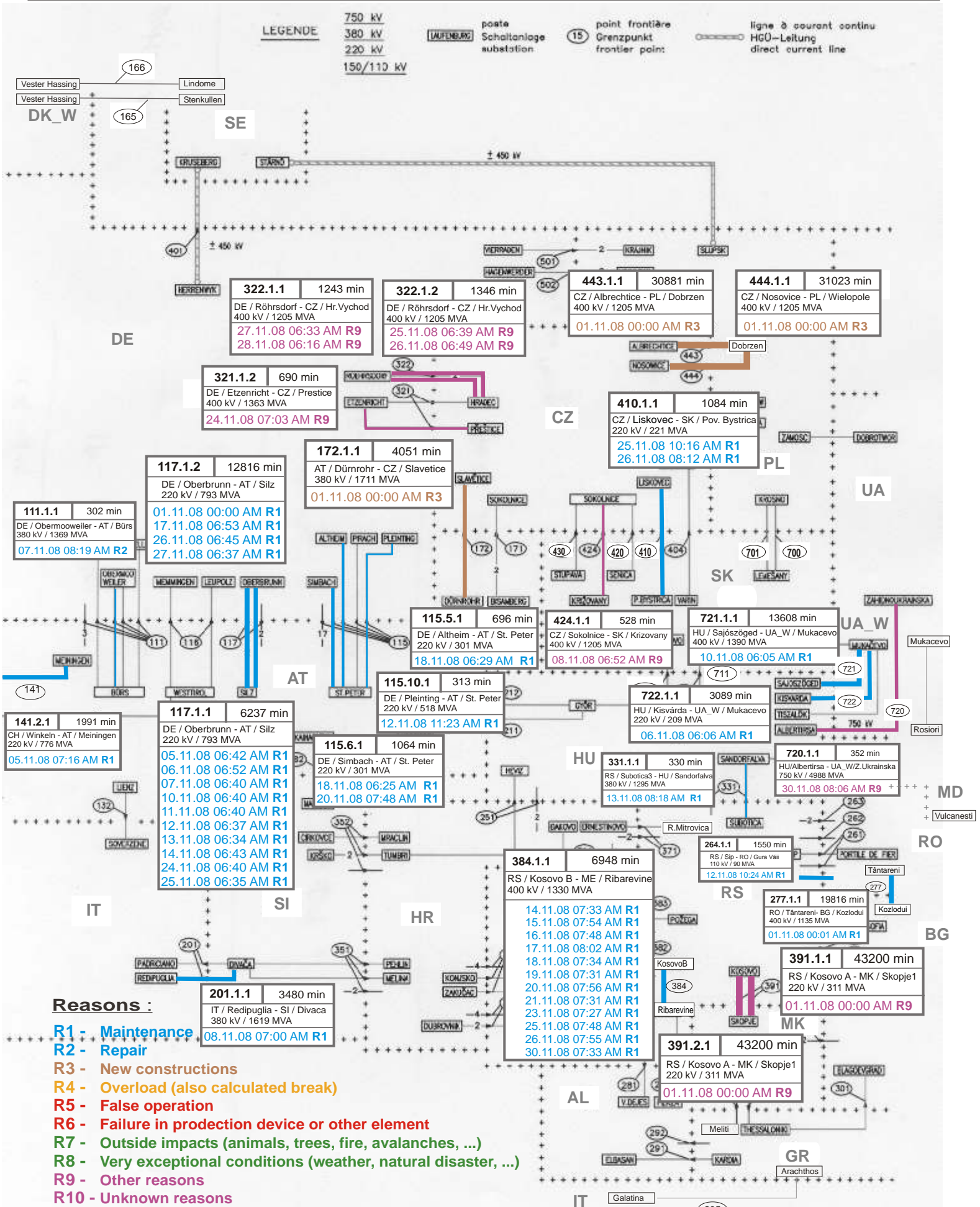
UCTE = 38123 MW

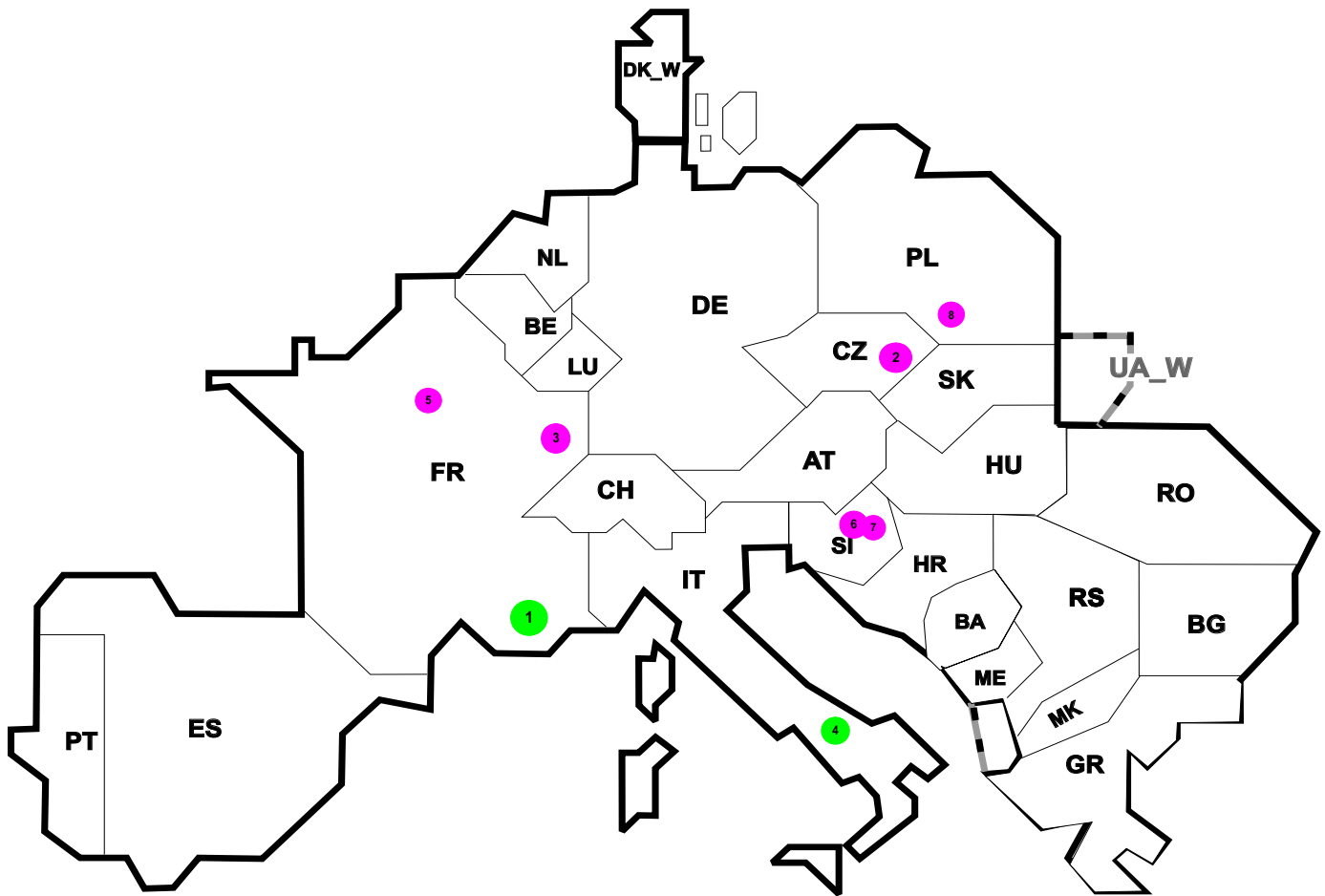
Total = 43865 MW

Synchronous operation with UCTE region

I = Import balance
E = Export balance







Reasons:

R4 Overload (also calculated break)

R5 False operation

R6 Failure in protection device or other element

R7 Outside impacts (animals, trees, fire, avalanches, ...)
(animals, trees, fire, avalanches, ...)

R8 Very exceptional conditions
(weather, natural disaster, ...)

R9 Other reasons

R10 Unknown reasons

No	Country	Substation	Reason	Energy not supplied ² [MWh]	Total loss of power [MW]	Restoration time [min]	Equivalent time of interruption ¹
1	FR	Neoules	R8	1544	1247	74	1,647
2	CZ	Otrokovice	R9	17	0	5	0,137
3	FR	Alsace	R9	17	65	16	0,019
4	IT	Sorgente	R8	7	80	5	0,011
5	FR	Chevilly	R9	6	52	7	0,006
6	SI	Bericevo	R9	0	0	127	0,000
7	SI	Bericevo	R9	0	0	1949	0,000
8	PL	Wielopole	R9	0	200	161	0,000

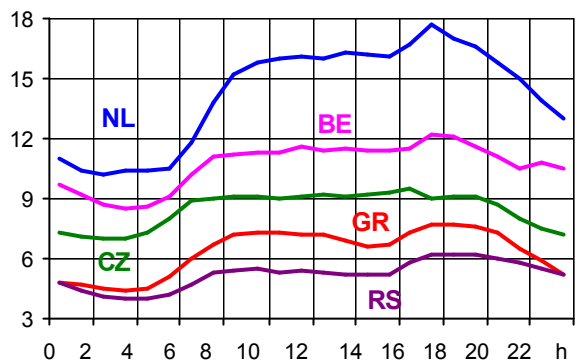
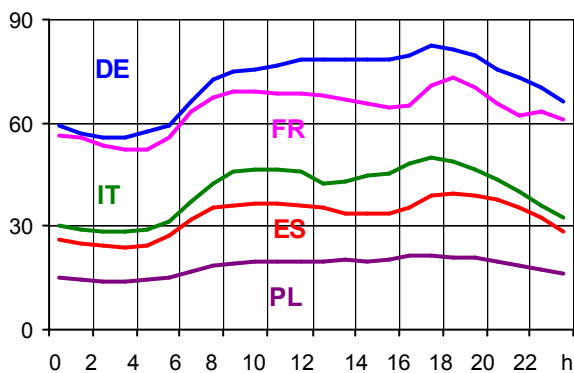
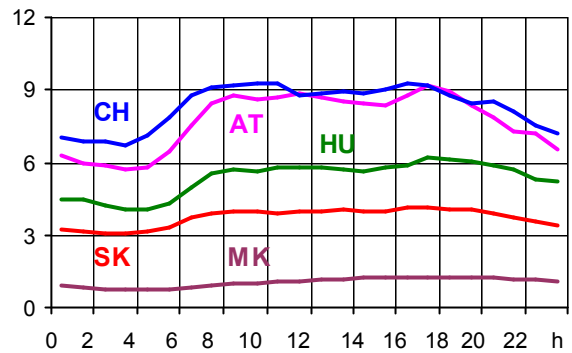
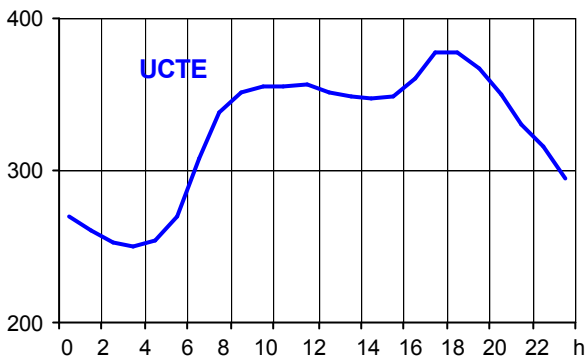
¹ (year [in min] * energy not supplied) / consumption last 12 months

Control area	Export Programs	Import Programs	Export Programs at 03:00	Import Programs at 03:00	Export Programs at 11:00	Import Programs at 11:00
AT	552443	868706	993	777	176	1356
BA	373976	231510	242	141	337	141
BE	315488	836360	0	788	217	1334
BG	n.a.	n.a.	n.a.	n.a.	n.a.	n.a.
CH	1789640	2330099	1136	3770	3190	3998
CZ	1643873	1018693	2672	1087	2290	2273
DE	3664156	967941	6178	1437	7724	307
DK_W	661111	552674	0	3238	900	840
ES	n.a.	n.a.	n.a.	n.a.	n.a.	n.a.
FR	5971673	2676434	7803	3076	6123	3270
GR	29003	473572	180	622	0	465
HR	37544	623468	58	902	0	1094
HU	901354	1008409	1143	1379	1054	1637
IT	231474	3841163	124	4360	105	6515
ME	216365	318729	458	200	467	200
MK	2500	169100	174	227	55	306
NL	811130	1761307	1270	1969	1343	2769
PL	181097	143148	100	95	300	440
PT	1016	879824	0	1500	0	1150
RO	434070	89115	502	190	588	219
RS	455953	550236	622	598	597	645
SI	711799	563284	812	727	1107	820
SK	454908	396565	662	426	863	1073
UA_W	333120	3888	497	0	494	0

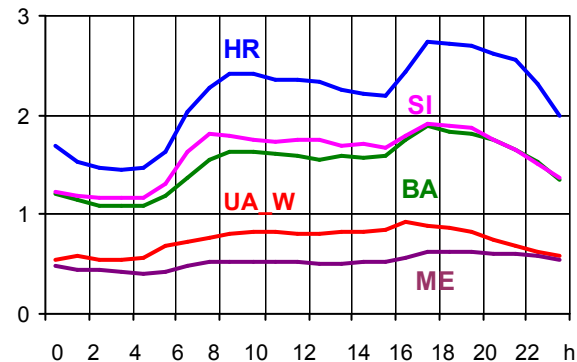
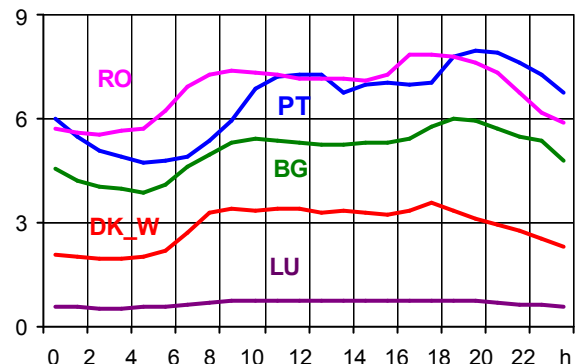
- Control areas can differ from national borders (i.e. German block which includes parts of AT, LU and DK).
- Values are calculated on an hourly base (MWh).
- This values are not the provisional values entered in the VULCANUS system, but the definitive values after an eventual correction during the actual date.
- Export Programs: Sum of all positive values of every hour of every border
- Import Programs: Sum of all negative values of every hour of every border
- Export Programs at 03:00: Sum of all positive values the third Wednesday from 02:00 to 03:00 a.m.
- Import Programs at 03:00: Sum of all negative values the third Wednesday from 02:00 to 03:00 a.m.
- Export Programs at 11:00: Sum of all positive values the third Wednesday from 10:00 to 11:00 a.m.
- Import Programs at 11:00: Sum of all negative values the third Wednesday from 10:00 to 11:00 a.m.

Consumption hourly load curves on 19.11.2008 CET

Values in GW



	Highest load MW	var. % ¹	Load representativity %
AT	9205	1,8	100
BA	1894	6,3	100
BE ²	12153	-7,1	100
BG	6014	-2,7	100
CH	9266	-2,4	100
CZ	9472	-4,8	100
DE	82232	0,8	91
DK_W	3580	-1,9	100
ES	39568	0,0	98
FR	72967	-0,4	100
GR	7738	-2,1	100
HR	2737	-5,7	100
HU	6184	-4,3	100
IT	49802	-9,8	100
LU	775	-24,2	100
ME	620	-5,2	100
MK	1278	-10,6	100
NL	17712	12,0	100
PL ³	21383	-2,8	100
PT	7958	-1,8	97
RO	7872	-1,9	100
RS	6196	0,9	100
SI	1907	-12,3	100
SK	4162	-1,8	100
UCTE	378134	-1,5	
UA_W	934	7,5	100



¹ Variation as compared to corresponding month of the previous year
² The reported figures are best estimates based on actual measurements and extrapolations.
³ Operational data

Contact

Boulevard Saint-Michel, 15
B-1040 Brussels – Belgium
Tel +32 2 741 69 40
Fax +32 2 741 69 49

info@ucte.org
www.ucte.org