

# UCTE



## October 2005

Monthly provisional values  
union for the co-ordination of transmission of electricity

| <b>Table of contents <sup>1</sup></b> |  | <b>Page</b> |
|---------------------------------------|--|-------------|
| 1                                     | Electricity supply situation of the countries              | 2           |
| 2                                     | Physical energy flows                                      | 3           |
| 3                                     | Monthly consumption  | 4           |
| 4                                     | Monthly consumption variation                              | 6           |
| 5                                     | Consumption of the last 12 months                          | 8           |
| 6                                     | Variation of the last 12 months' consumption               | 9           |
| 7                                     | Load flows (night)   | 10          |
| 8                                     | Load flows (day)   | 11          |
| 9                                     | Unavailability of international tie lines ( major events ) | 12          |
| 10                                    | Network reliability ( major events )                       | 14          |
| 11                                    | Scheduled exchanges  | 15          |
| 12                                    | Load on the 3 <sup>rd</sup> Wednesday                      | 16          |

<sup>1</sup> Monthly provisional values from the UCTE database as of 26 January 2006

All values are calculated to represent 100% of the national values

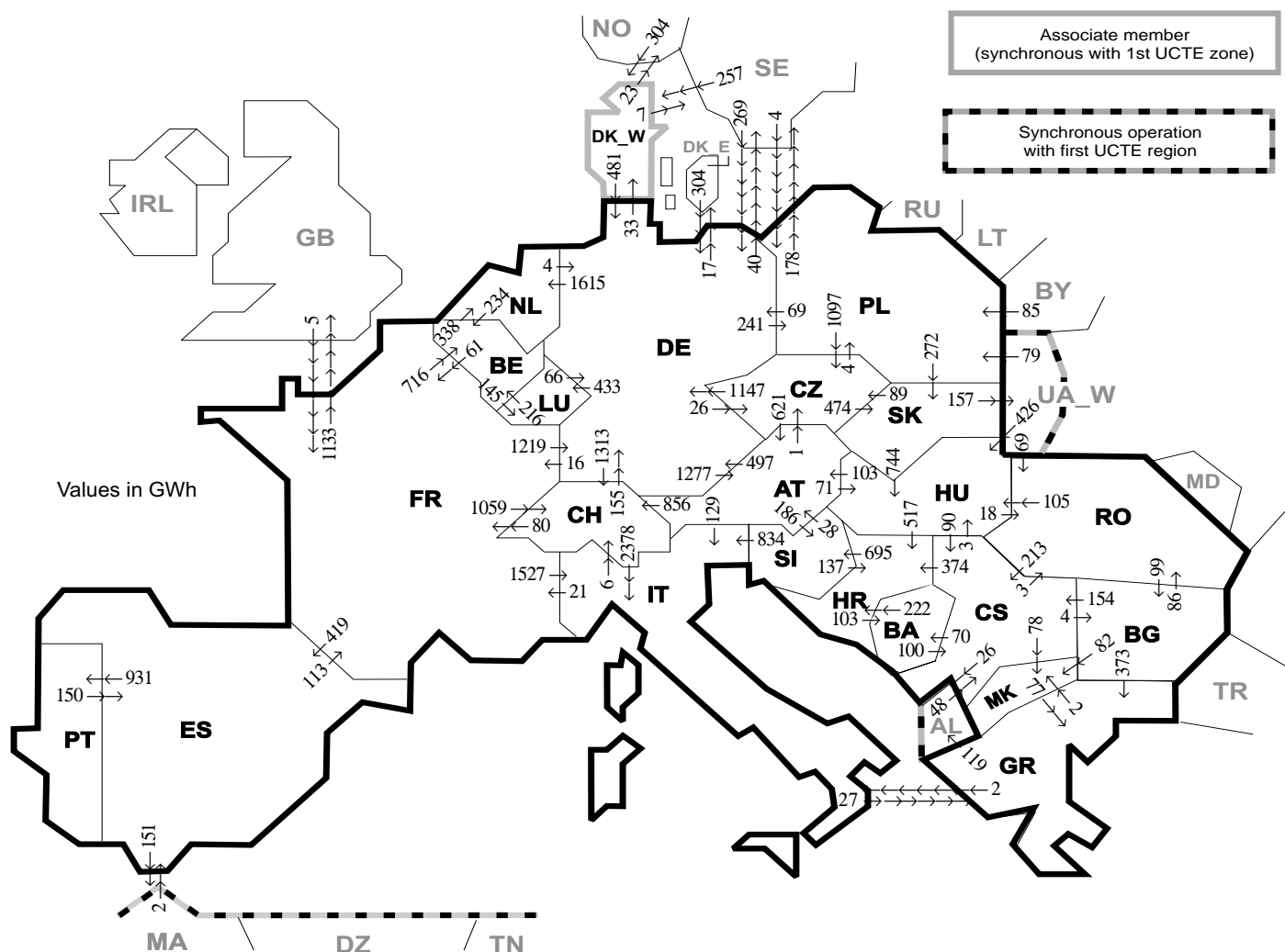
| Countries         | Net production in GWh |               |              |              |               |              |                           | Exchange balance<br>in GWh | Pump<br>in GWh | Consumption in GWh |             |                |            |
|-------------------|-----------------------|---------------|--------------|--------------|---------------|--------------|---------------------------|----------------------------|----------------|--------------------|-------------|----------------|------------|
|                   | Therm. nuclear        | Fossil fuel   | Hydro prod   | Other renew. | Of which wind | Not identify | Total                     |                            |                | monthly            | var. [%]    | last 12 months | var. [%]   |
| AT                | 0                     | 2147          | 2882         | 0            | 0             | 436          | 5465 <sup>1</sup>         | 248                        | 281            | 5432               | -1,9        | 63329          | -3,9       |
| BA                | 0                     | 706           | 357          | 0            | 0             | 0            | 1063                      | -146                       | 0              | 917                | -3,6        | 11079          | -2,7       |
| BE                | 3542                  | 2835          | 117          | 187          | 15            | 0            | 6681 <sup>1</sup>         | 622                        | 147            | 7156               | -5,1        | 87019          | -0,9       |
| BG                | 1398                  | 1989          | 237          | 0            | 0             | 0            | 3624                      | -597                       | 63             | 2964               | 8,1         | 35754          | 0,9        |
| CH                | 2406                  | 186           | 2157         | 79           | 0             | 0            | 4828 <sup>1</sup>         | 641                        | 249            | 5220               | 3,9         | 62600          | 4,4        |
| CS                | 0                     | 2444          | 981          | 0            | 0             | 0            | 3425 <sup>1</sup>         | 38                         | 48             | 3415               | 4,3         | 41494          | 0,6        |
| CZ                | 2052                  | 4088          | 227          | 6            | 3             | 0            | 6373 <sup>1</sup>         | -1033                      | 78             | 5262               | 1,6         | 62333          | 2,1        |
| DE                | 13422                 | 29174         | 1778         | 3253         | 2337          | 0            | 47627 <sup>1</sup>        | -800                       | 793            | 46034              | -1,8        | 556459         | 1,4        |
| ES                | 4736                  | 12098         | 1377         | 2013         | 1894          | 0            | 20224 <sup>1</sup>        | -675                       | 523            | 19026              | -6,4        | 248263         | -0,2       |
| FR                | 35738                 | 3596          | 3832         | 336          | 104           | 0            | 43502                     | -5893                      | 720            | 36889              | -3,5        | 477876         | 1,4        |
| GR                | 0                     | 3412          | 323          | 117          | 108           | 0            | 3852 <sup>1</sup>         | 352                        | 95             | 4109               | 3,6         | 52545          | 2,2        |
| HR                | 0                     | 344           | 537          | 1            | 1             | 0            | 882 <sup>1</sup>          | 448                        | 5              | 1325               | 5,4         | 16403          | 3,6        |
| HU                | 984                   | 1670          | 20           | 0            | 0             | 0            | 2674 <sup>1</sup>         | 621                        | 0              | 3295               | 1,3         | 38585          | 1,2        |
| IT                | 0                     | 19384         | 3652         | 521          | 96            | 0            | 23557 <sup>1</sup>        | 4816                       | 791            | 27582              | -0,5        | 327771         | 1,4        |
| LU                | 0                     | 279           | 70           | 10           | 6             | 0            | 359                       | 296                        | 94             | 560                | -1,1        | 6185           | -2,8       |
| MK                | 0                     | 474           | 88           | 0            | 0             | 0            | 562 <sup>1</sup>          | 84                         | 0              | 646                | 12,3        | 7924           | 8,2        |
| NL                | 334                   | 7150          | 0            | 499          | 176           | 0            | 7983 <sup>1</sup>         | 1715                       | 0              | 9698               | 3,2         | 114015         | 3,2        |
| PL                | 0                     | 12407         | 236          | 0            | 0             | 0            | 12643 <sup>1</sup>        | -1204                      | 205            | 11234              | 0,1         | 129719         | -1,7       |
| PT                | 0                     | 2688          | 203          | 358          | 183           | 0            | 3249 <sup>1</sup>         | 791                        | 45             | 3994               | 2,7         | 49221          | 4,2        |
| RO                | 490                   | 2477          | 1541         | 0            | 0             | 0            | 4508 <sup>1</sup>         | -241                       | 0              | 4267               | 0,8         | 51887          | 3,4        |
| SI                | 448                   | 416           | 373          | 0            | 0             | 0            | 1237                      | -122                       | 0              | 1115               | -2,6        | 13004          | -2,6       |
| SK                | 1435                  | 596           | 226          | 1            | 1             | 224          | 2482 <sup>1</sup>         | -244                       | 16             | 2222               | 0,3         | 26154          | -0,9       |
| <b>UCTE</b>       | <b>66985</b>          | <b>110560</b> | <b>21214</b> | <b>7381</b>  | <b>4924</b>   | <b>660</b>   | <b>206800<sup>1</sup></b> | <b>-283</b>                | <b>4153</b>    | <b>202362</b>      | <b>-1,3</b> | <b>2479619</b> | <b>1,1</b> |
| DK_W              | 0                     | 1228          | 1            | 466          | 341           | 0            | 1695 <sup>1</sup>         | 81                         | 0              | 1776               | -0,8        | 21219          | n.a.       |
| UA_W <sup>2</sup> | 0                     | 700           | 4            | 0            | 0             | 0            | 704 <sup>1</sup>          | -338                       | 0              | 366                | -2,4        | 4387           | 0,8        |

<sup>1</sup> Including deliveries from industry

<sup>2</sup> UA\_W represents the so-called Burshtyn Island synchronously interconnected with UCTE

All representativities of the national production and consumption values used to calculate values at a representativity of 100% as stated in the table above

| Countries     | AT   | BA  | BE  | BG  | CH  | CS  | CZ  | DE  | ES  | FR  | GR  | HR  | HU   | IT  | LU   | MK  | NL  | PL   | PT  | RO  | SI  | SK  | DK_W | UA_W <sup>2</sup> |
|---------------|------|-----|-----|-----|-----|-----|-----|-----|-----|-----|-----|-----|------|-----|------|-----|-----|------|-----|-----|-----|-----|------|-------------------|
| Production    |      |     |     |     |     |     |     |     |     |     |     |     |      |     |      |     |     |      |     |     |     |     |      |                   |
| Therm.nuclear | 100  | 100 | 100 | 100 | 100 | 100 | 100 | 100 | 100 | 100 | 100 | 100 | 100  | 100 | 100  | 100 | 100 | 100  | 100 | 100 | 100 | 100 | 100  | 100               |
| Fossil fuel   | 100  | 100 | 100 | 100 | 100 | 100 | 100 | 100 | 100 | 100 | 100 | 100 | 100  | 100 | 98   | 100 | 100 | 100  | 96  | 100 | 100 | 100 | 100  | 100               |
| Hydro prod    | 100  | 100 | 100 | 100 | 100 | 100 | 100 | 100 | 100 | 100 | 100 | 100 | 100  | 100 | 99   | 100 | 100 | 100  | 100 | 100 | 100 | 100 | 100  | 100               |
| Other renew.  | n.a. | 100 | 100 | 100 | 100 | 100 | 100 | 100 | 100 | 100 | 100 | 100 | n.a. | 100 | 99   | 100 | 100 | n.a. | 100 | 100 | 100 | 100 | 100  | 100               |
| Not identify  | n.a. | 100 | 100 | 100 | 100 | 100 | 100 | 100 | 100 | 100 | 100 | 100 | n.a. | 100 | n.a. | 100 | 100 | n.a. | 100 | 100 | 100 | 100 | 100  | 100               |
| Consumption   | 100  | 100 | 100 | 100 | 100 | 100 | 100 | 100 | 98  | 100 | 100 | 100 | 100  | 100 | 99   | 100 | 100 | 100  | 97  | 100 | 95  | 100 | 100  |                   |



| Exporting countries    | Importing countries |            |             |            |             |            |             |             |            |            |            |             |             |             |            |            |             |            |            |            | Sum export |            |            |            |             |                        |      |
|------------------------|---------------------|------------|-------------|------------|-------------|------------|-------------|-------------|------------|------------|------------|-------------|-------------|-------------|------------|------------|-------------|------------|------------|------------|------------|------------|------------|------------|-------------|------------------------|------|
|                        | AT                  | BA         | BE          | BG         | CH          | CS         | CZ          | DE          | ES         | FR         | GR         | HR          | HU          | IT          | LU         | MK         | NL          | PL         | PT         | RO         |            | SI         | SK         | DK_W       | UA_W2       | Other III <sup>1</sup> |      |
| AT                     | -                   | -          | -           | -          | 856         | -          | 1           | 497         | -          | -          | -          | -           | 71          | 129         | -          | -          | -           | -          | -          | -          | -          | 186        | -          | -          | -           | -                      | 1740 |
| BA                     | -                   | -          | -           | -          | -           | 100        | -           | -           | -          | -          | -          | 222         | -           | -           | -          | -          | -           | -          | -          | -          | -          | -          | -          | -          | -           | -                      | 322  |
| BE                     | -                   | -          | -           | -          | -           | -          | -           | -           | -          | 61         | -          | -           | -           | -           | 145        | -          | 338         | -          | -          | -          | -          | -          | -          | -          | -           | -                      | 544  |
| BG                     | -                   | -          | -           | -          | -           | 154        | -           | -           | -          | -          | 373        | -           | -           | -           | 82         | -          | -           | -          | -          | -          | 86         | -          | -          | -          | -           | 0                      | 695  |
| CH                     | 0                   | -          | -           | -          | -           | -          | -           | 155         | -          | 80         | -          | -           | -           | -           | -          | -          | -           | -          | -          | -          | -          | -          | -          | -          | -           | -                      | 2613 |
| CS                     | -                   | 70         | -           | 4          | -           | -          | -           | -           | -          | -          | -          | -           | 374         | 3           | -          | 78         | -           | -          | -          | 3          | -          | -          | -          | -          | -           | 26                     | 558  |
| CZ                     | 621                 | -          | -           | -          | -           | -          | -           | -           | 1147       | -          | -          | -           | -           | -           | -          | -          | -           | 4          | -          | -          | -          | 474        | -          | -          | -           | -                      | 2246 |
| DE                     | 1277                | -          | -           | -          | 1313        | -          | 26          | -           | -          | 16         | -          | -           | -           | -           | 433        | -          | 1615        | 241        | -          | -          | -          | 33         | -          | -          | 57          | 5011                   |      |
| ES                     | -                   | -          | -           | -          | -           | -          | -           | -           | -          | 113        | -          | -           | -           | -           | -          | -          | -           | -          | 931        | -          | -          | -          | -          | -          | -           | 151                    | 1195 |
| FR                     | -                   | -          | 716         | -          | 1059        | -          | -           | 1219        | 419        | -          | -          | -           | 1527        | -           | -          | -          | -           | -          | -          | -          | -          | -          | -          | -          | -           | 1133                   | 6073 |
| GR                     | -                   | -          | -           | 0          | -           | -          | -           | -           | -          | -          | -          | -           | -           | 2           | -          | 2          | -           | -          | -          | -          | -          | -          | -          | -          | -           | 119                    | 123  |
| HR                     | -                   | 103        | -           | -          | 0           | -          | -           | -           | -          | -          | -          | 0           | -           | -           | -          | -          | -           | -          | -          | -          | -          | 695        | -          | -          | -           | -                      | 798  |
| HU                     | 103                 | -          | -           | -          | 90          | -          | -           | -           | -          | -          | -          | 517         | -           | -           | -          | -          | -           | -          | -          | -          | 18         | 0          | -          | 0          | -           | -                      | 728  |
| IT                     | 0                   | -          | -           | -          | 6           | -          | -           | -           | -          | 21         | 27         | -           | -           | -           | -          | -          | -           | -          | -          | -          | 0          | -          | -          | -          | -           | 54                     |      |
| LU                     | -                   | -          | 216         | -          | -           | -          | -           | 66          | -          | -          | -          | -           | -           | -           | -          | -          | -           | -          | -          | -          | -          | -          | -          | -          | -           | -                      | 282  |
| MK                     | -                   | -          | -           | 0          | -           | 0          | -           | -           | -          | -          | 77         | -           | -           | -           | -          | -          | -           | -          | -          | -          | -          | -          | -          | -          | -           | -                      | 77   |
| NL                     | -                   | -          | 234         | -          | -           | -          | -           | 4           | -          | -          | -          | -           | -           | -           | -          | -          | -           | -          | -          | -          | -          | -          | -          | -          | -           | -                      | 238  |
| PL                     | -                   | -          | -           | -          | -           | -          | -           | -           | -          | -          | -          | -           | -           | -           | -          | -          | -           | -          | -          | -          | -          | 272        | -          | 0          | 178         | 1616                   |      |
| PT                     | -                   | -          | -           | -          | -           | -          | -           | -           | 150        | -          | -          | -           | -           | -           | -          | -          | -           | -          | -          | -          | -          | -          | -          | -          | -           | -                      | 150  |
| RO                     | -                   | -          | -           | 99         | -           | 213        | -           | -           | -          | -          | -          | -           | 105         | -           | -          | -          | -           | -          | -          | -          | -          | -          | -          | -          | 0           | 0                      | 417  |
| SI                     | 28                  | -          | -           | -          | -           | -          | -           | -           | -          | -          | -          | -           | -           | 137         | -          | -          | -           | -          | -          | -          | -          | -          | -          | -          | -           | -                      | 999  |
| SK                     | -                   | -          | -           | -          | -           | -          | 89          | -           | -          | -          | -          | 744         | -           | -           | -          | -          | -           | -          | 0          | -          | -          | -          | -          | -          | 157         | 990                    |      |
| DK_W                   | -                   | -          | -           | -          | -           | -          | 481         | -           | -          | -          | -          | -           | -           | -           | -          | -          | -           | -          | -          | -          | -          | -          | -          | -          | 30          | 511                    |      |
| UA_W <sup>2</sup>      | -                   | -          | -           | -          | -           | -          | -           | -           | -          | -          | -          | 426         | -           | -           | -          | -          | -           | 79         | -          | 69         | 0          | -          | -          | -          | -           | -                      | 574  |
| Other III <sup>1</sup> | -                   | -          | -           | 0          | 48          | -          | 573         | 2           | 5          | 0          | 0          | -           | -           | -           | -          | -          | -           | 89         | -          | 0          | -          | 561        | -          | -          | -           | -                      | 1278 |
| <b>Sum imp</b>         | <b>2029</b>         | <b>173</b> | <b>1166</b> | <b>103</b> | <b>3234</b> | <b>605</b> | <b>1213</b> | <b>4211</b> | <b>571</b> | <b>296</b> | <b>477</b> | <b>1250</b> | <b>1349</b> | <b>4870</b> | <b>578</b> | <b>162</b> | <b>1953</b> | <b>413</b> | <b>931</b> | <b>176</b> | <b>881</b> | <b>746</b> | <b>594</b> | <b>157</b> | <b>1694</b> | <b>29832</b>           |      |

Sum of physical energy flows between UCTE countries = 25615GWh

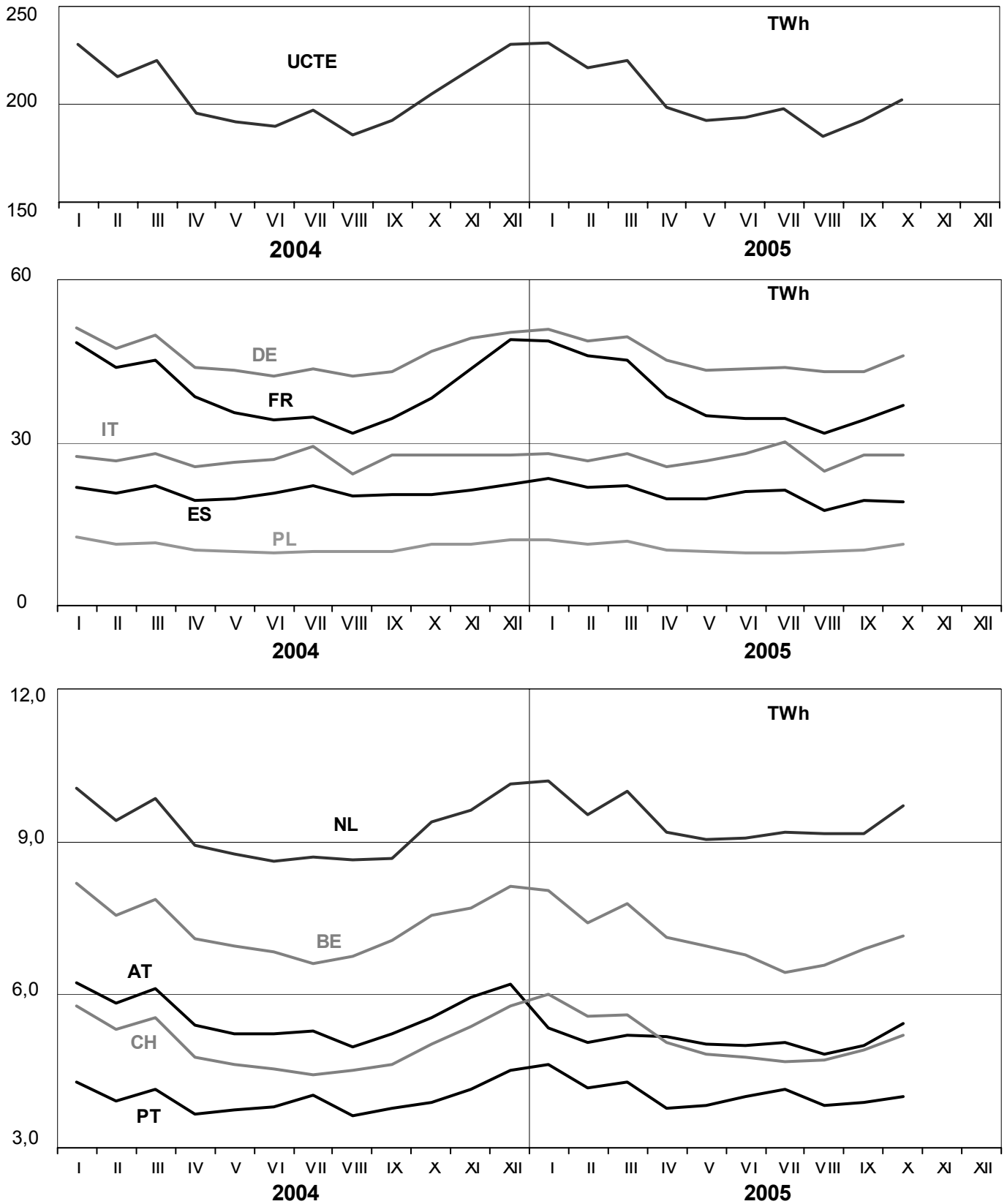
Total physical energy flows = 29832GWh

<sup>1</sup> Other III: Albania, Belarus, Denmark East, Great Britain, Morocco, Republic of Moldavia, Norway, Sweden and Republic of Turkey

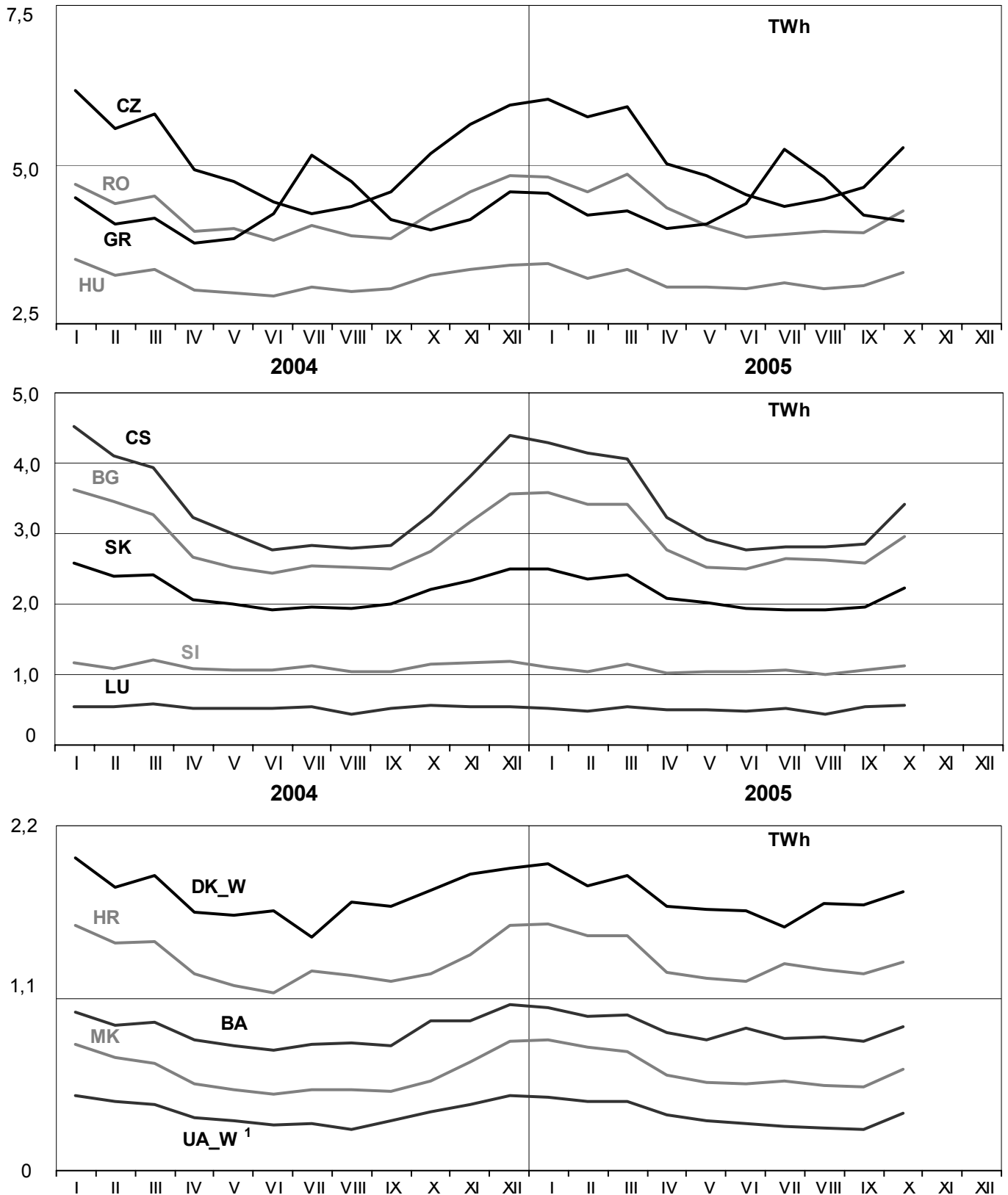
<sup>2</sup> UA\_W represents the so-called Burshtyn Island synchronously interconnected with UCTE

These physical energy flows were measured on the cross-frontier transmission lines ( $\leq 110$  kV) listed in table 9 of the Statistical Yearbook. These values may differ from the official statistics and the exchange balances in chapter 1.

All values are calculated to represent 100% of the national values



All values are calculated to represent 100% of the national values

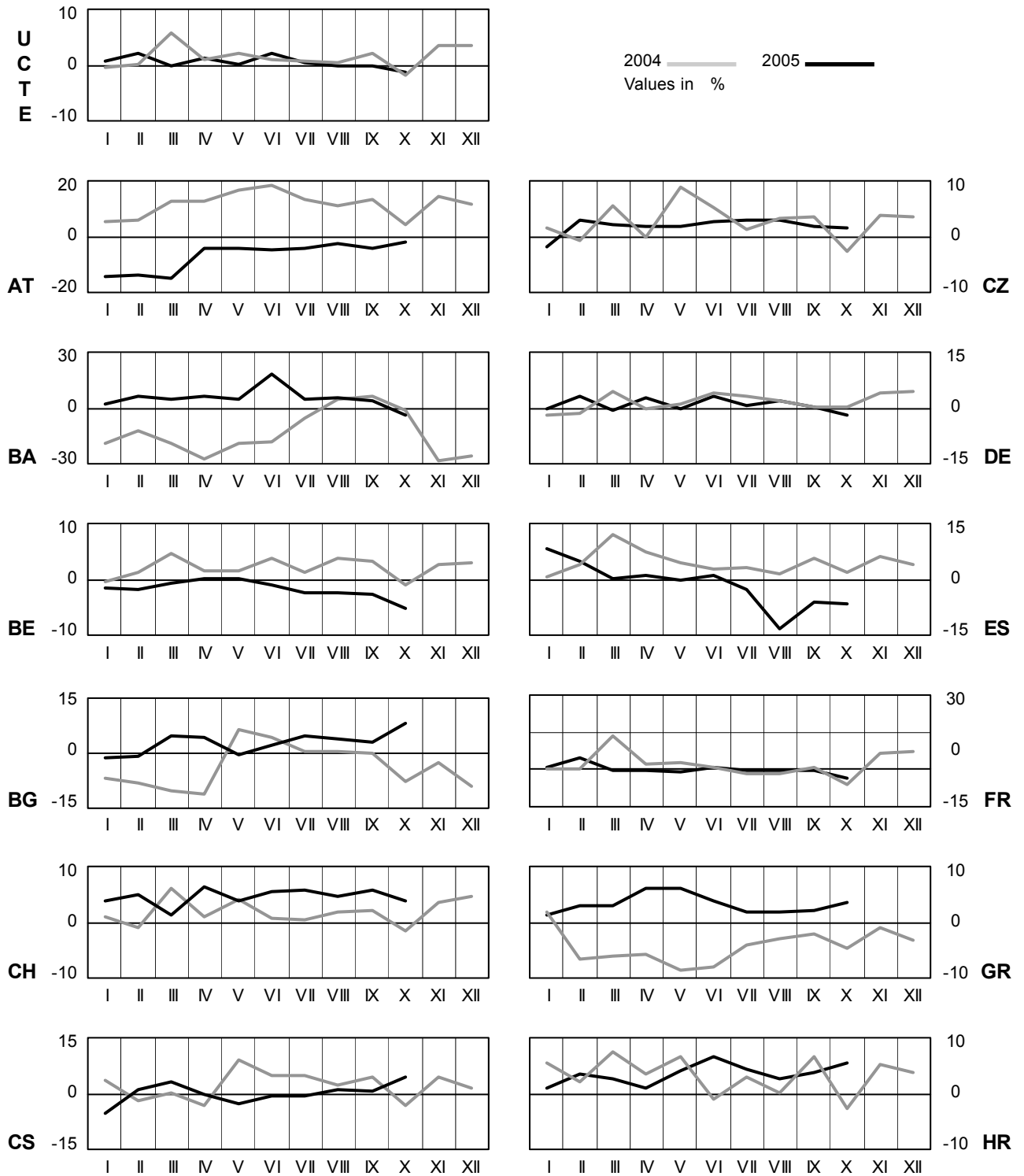


<sup>1</sup> UA\_W represents the so-called Burshtyn Island synchronously interconnected with UCTE

# 4 Monthly consumption variation

October 2005

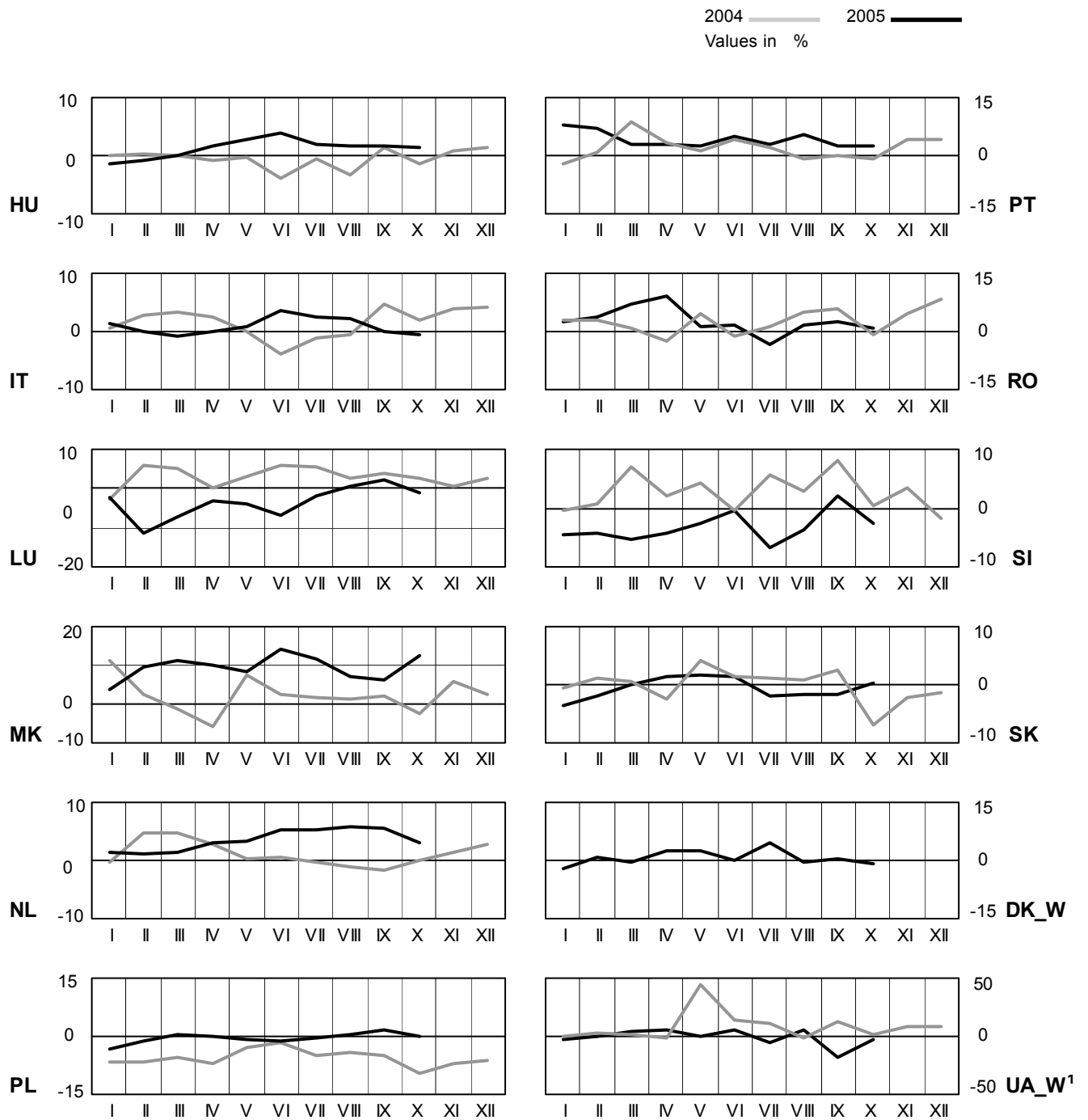
All values are calculated to represent 100% of the national values



# 4 Monthly consumption variation

October 2005

All values are calculated to represent 100% of the national values



<sup>1</sup> UA\_W represents the so-called Burshtyn Island synchronously interconnected with UCTE

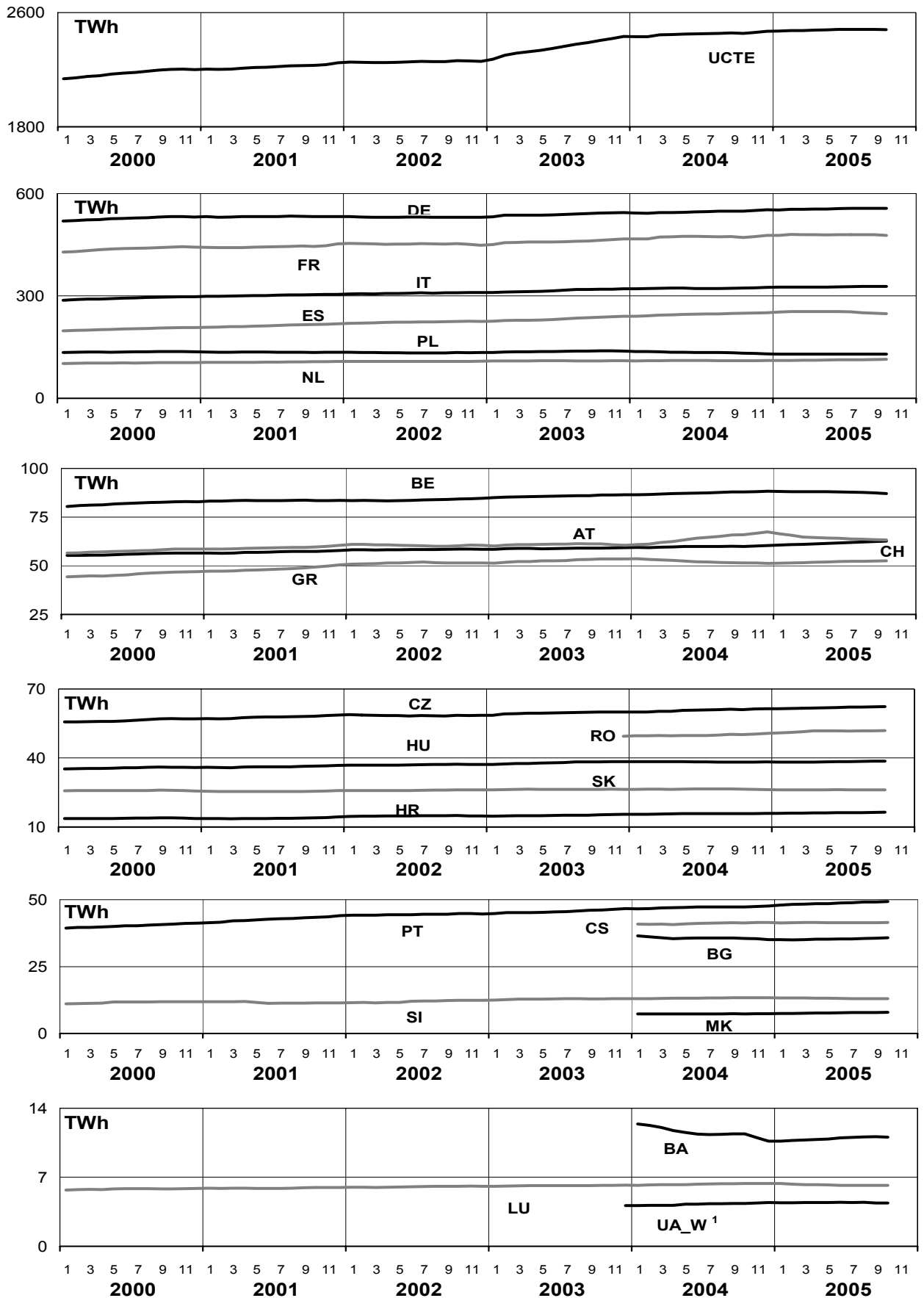


# 5

## Consumption of the last 12 months

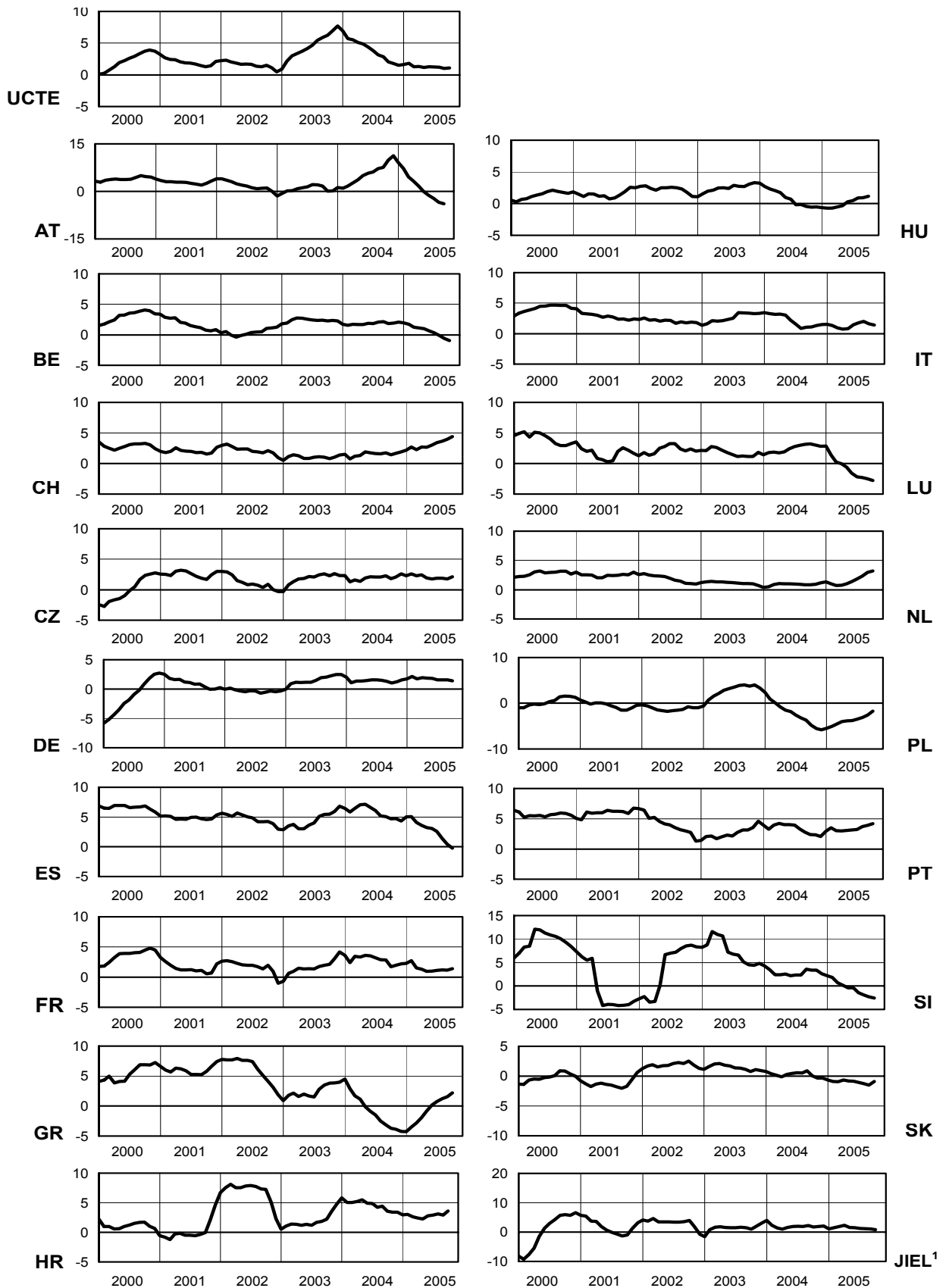
October 2005

All values are calculated to represent 100% of the national values

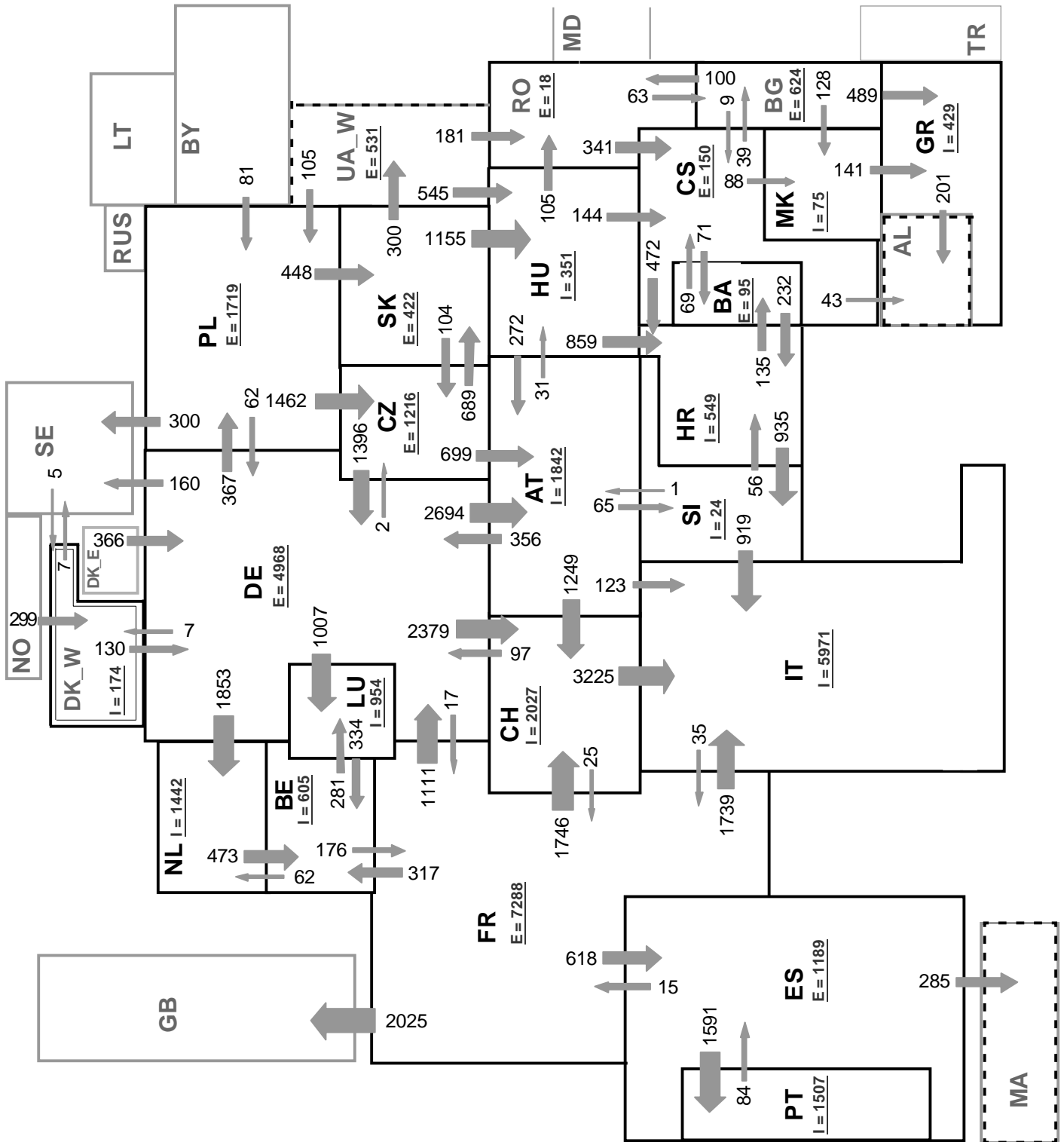


<sup>1</sup> UA\_W represents the so-called Burshtyn Island synchronously interconnected with UCTE

All values are calculated to represent 100% of the national values



¹ JIEL = FRY + FYROM (Federal Republic of Yugoslavia and former Yugoslav Republic of Macedonia)

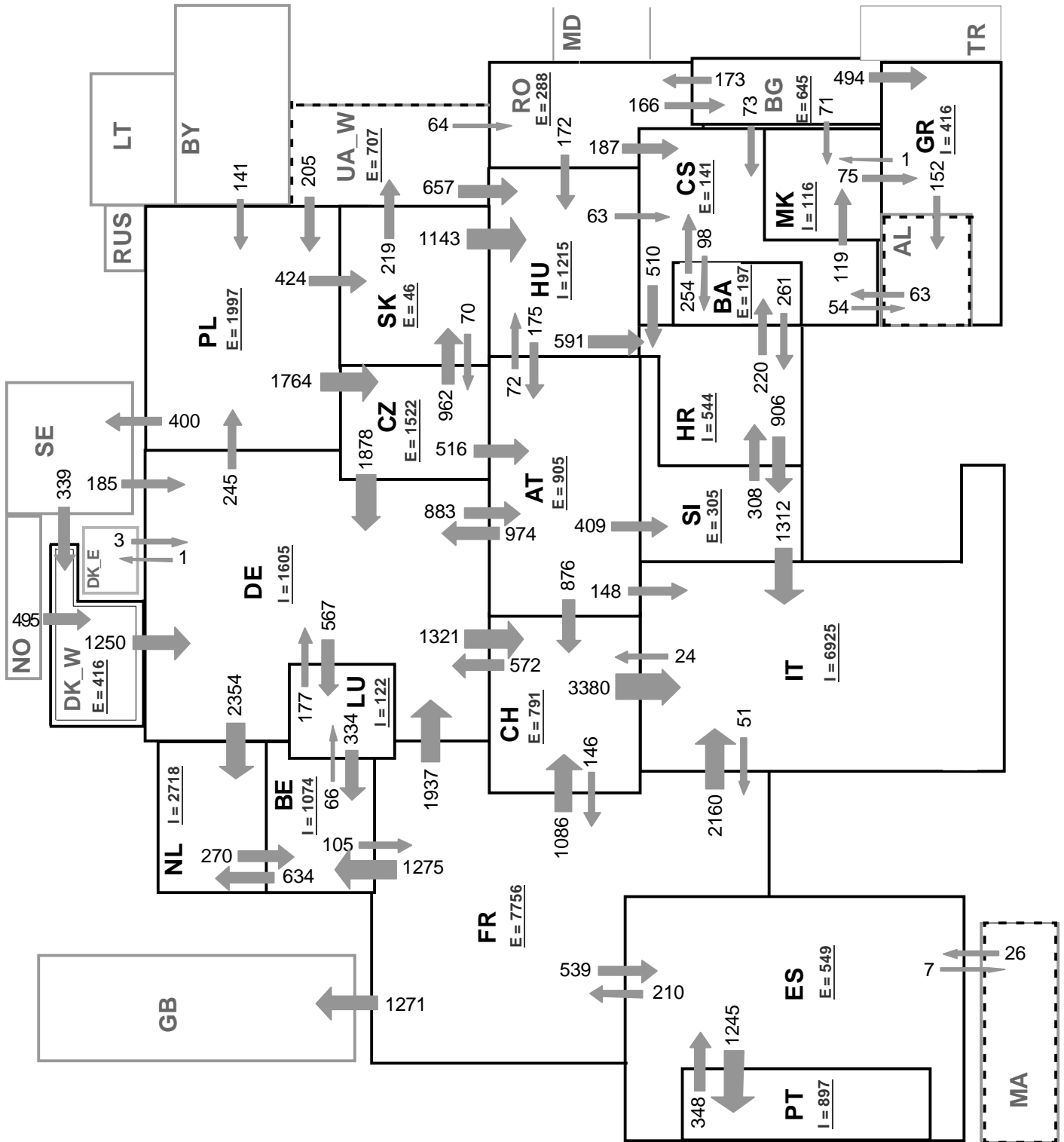


Associate member

Synchronous operation with first region

**Sum of load flows in MW:**  
**UCTE = 33755 MW      Total = 38795 MW**

\* Central European Time (CET)  
I = Import balance  
E = Export balance

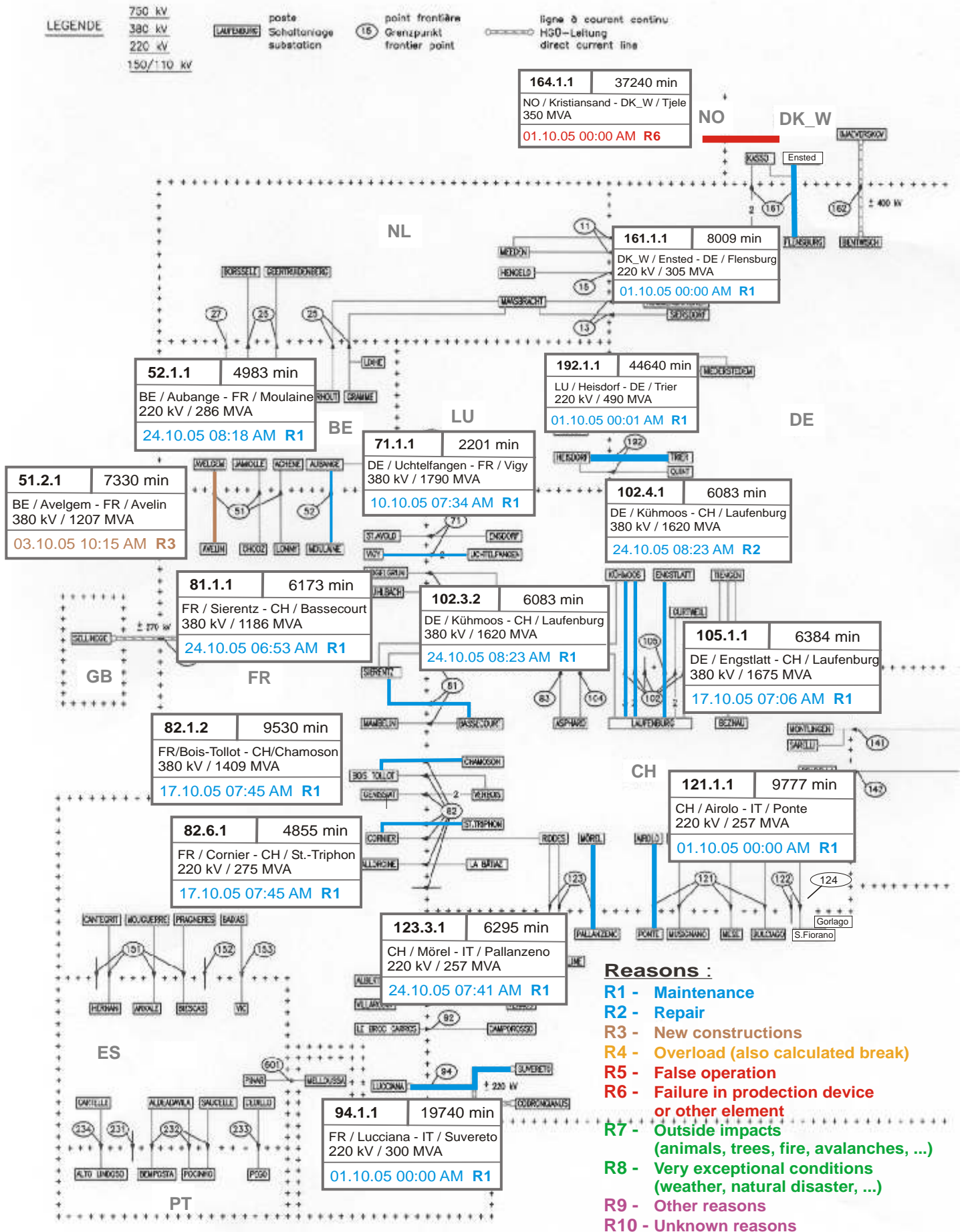


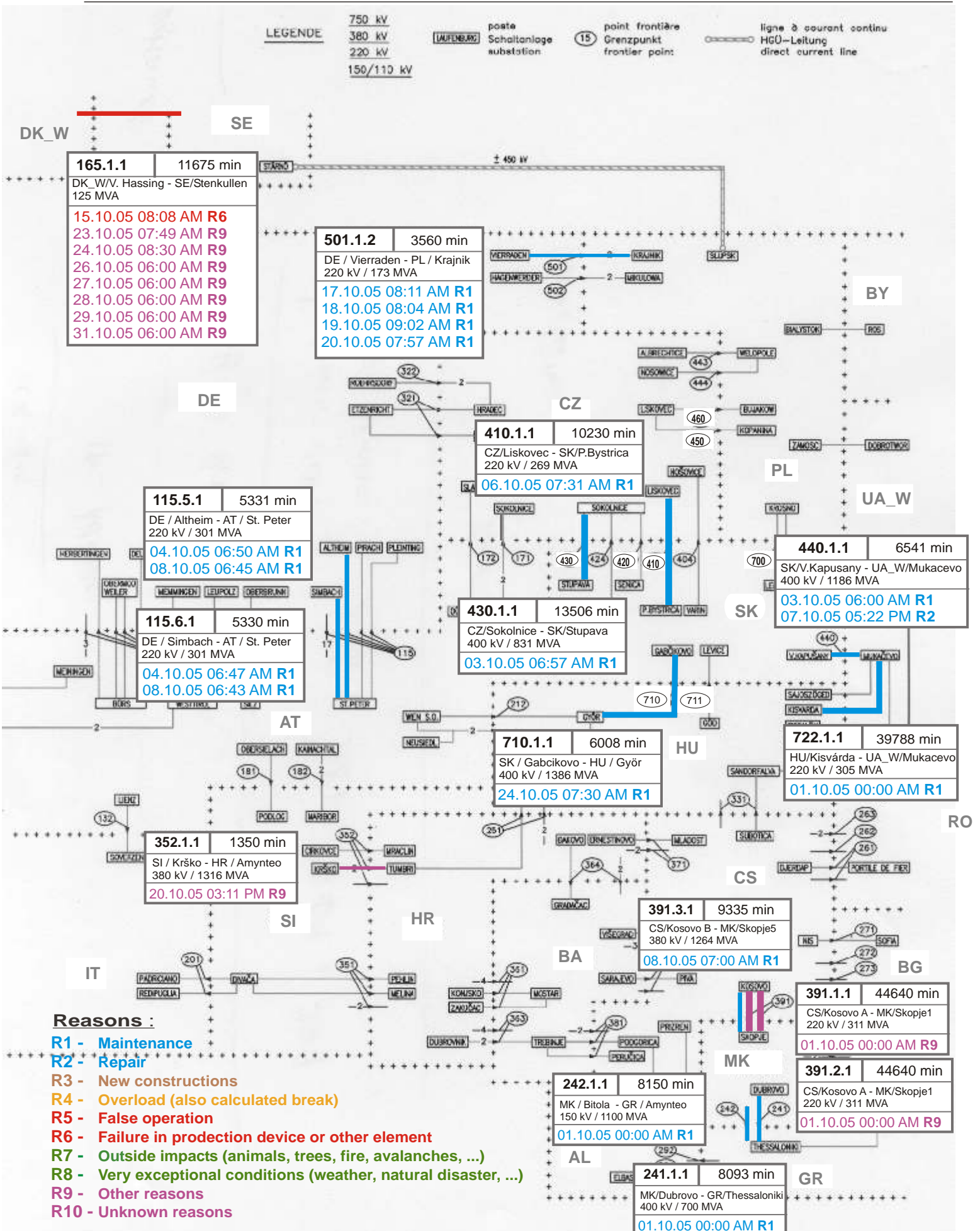
Associate member

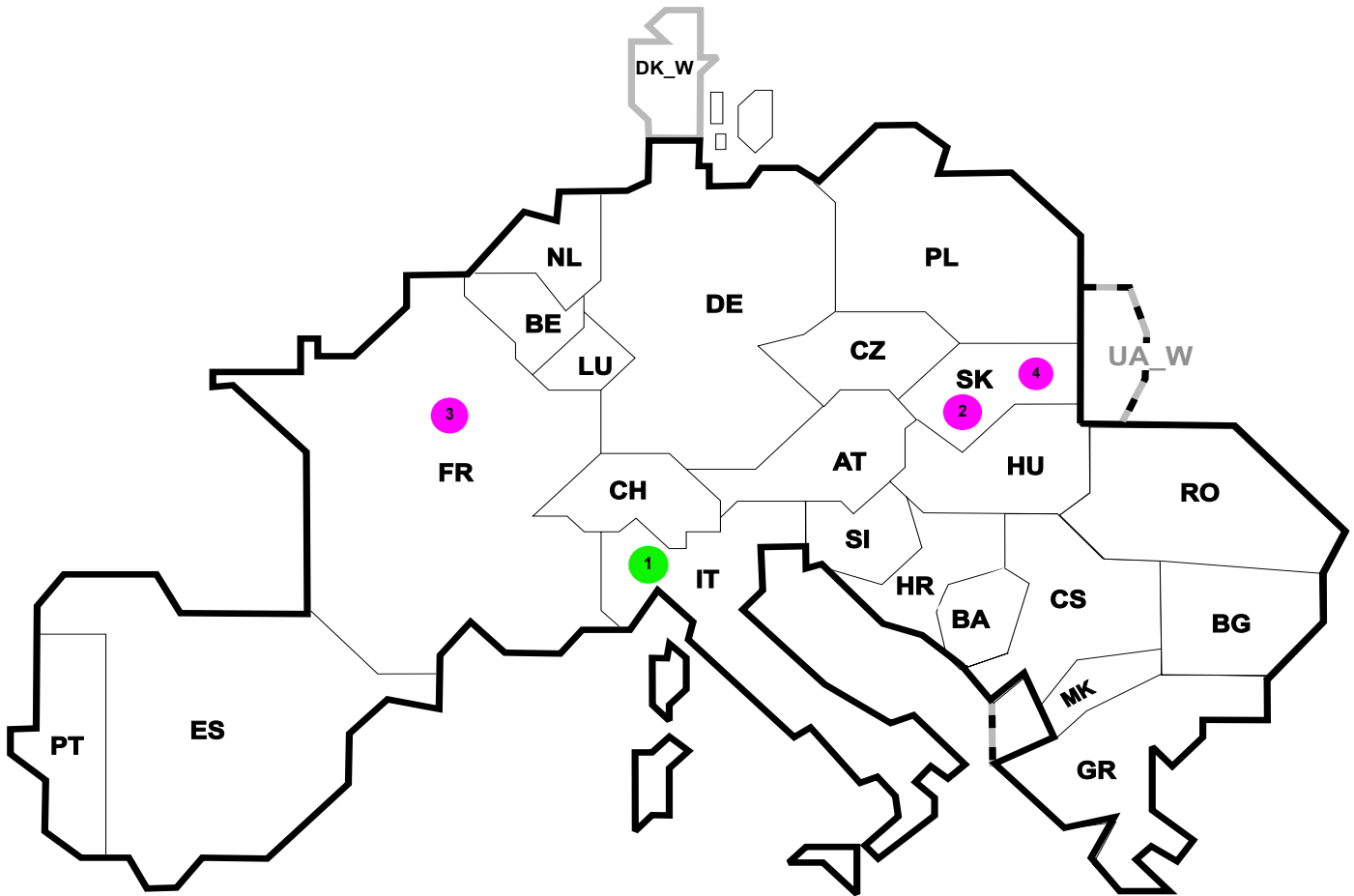
Synchronous operation with first region

**Sum of load flows in MW:**  
**UCTE = 35394MW    Total = 40926MW**

\* Central European Time (CET)  
I = Import balance  
E = Export balance







Reasons:

- R4** Overload (also calculated break)
- R5** False operation
- R6** Failure in protection device or other element
- R7** Outside impacts (animals, trees, fire, avalanches, ...)
- R8** Very exceptional conditions (weather, natural disaster, ...)
- R9** Other reasons
- R10** Unknown reasons

| Nbr | Country | Substation  | Reason | Energy not supplied [ MWh ] | Total loss of power [ MW ] | Restoration time [ min ] | Equivalent time of interruption <sup>1</sup> |
|-----|---------|-------------|--------|-----------------------------|----------------------------|--------------------------|--|
| 1   | IT      | Msterbianco | R8     | 43                          | 221                        | 21                       | 0,07   |
| 2   | SK      | H. Zdana    | R10    | 21                          | 257                        | 5                        | 0,42   |
| 3   | FR      | Mouche      | R9     | 9                           | 31                         | 17                       | 0,01   |
| 4   | SK      | S.N.Ves     | R10    | 3                           | 148                        | 1                        | 0,06   |

<sup>1</sup> ( year [in min] \* energy not supply ) / consumption last 12 months

| Control area      | Export Programs | Import Programs | Export Programs at 03:00 | Import Programs at 03:00 | Export Programs at 11:00 | Import Programs at 11:00 |
|-------------------|-----------------|-----------------|--------------------------|--------------------------|--------------------------|--------------------------|
| AT                | 916579          | 942214          | 2210                     | 1291                     | 725                      | 1887                     |
| BA                | 132921          | 54490           | 255                      | 130                      | 331                      | 125                      |
| BE                | 487203          | 1036152         | 675                      | 1225                     | 795                      | 1600                     |
| BG                | n.a.            | n.a.            | n.a.                     | n.a.                     | n.a.                     | n.a.                     |
| CH                | 2544171         | 3184889         | 2731                     | 4782                     | 3555                     | 2780                     |
| CS                | 433680          | 465098          | 509                      | 357                      | 527                      | 381                      |
| CZ                | 1858413         | 743518          | 2441                     | 1089                     | 2711                     | 1063                     |
| DE                | 3909307         | 2632506         | 5952                     | 2391                     | 4105                     | 4781                     |
| ES                | 1067616         | 394818          | 1827                     | 588                      | 1094                     | 405                      |
| FR                | 7706777         | 1959887         | 10565                    | 3252                     | 10523                    | 2814                     |
| GR                | 25523           | 381759          | 70                       | 492                      | 70                       | 470                      |
| HR                | 134645          | 576085          | 135                      | 669                      | 25                       | 582                      |
| HU                | 433653          | 1052933         | 767                      | 1112                     | 495                      | 1711                     |
| IT                | 54497           | 4870457         | 35                       | 6006                     | 75                       | 7000                     |
| MK                | 1600            | 84000           | 71                       | 135                      | 6                        | 137                      |
| NL                | 380926          | 2093336         | 780                      | 2250                     | 210                      | 2924                     |
| PL                | 1270647         | 108417          | 1823                     | 218                      | 2174                     | 210                      |
| PT                | 2785            | 793099          | 0                        | 1499                     | 0                        | 950                      |
| RO                | 443162          | 201291          | 307                      | 301                      | 506                      | 233                      |
| SI                | 645038          | 527428          | 791                      | 806                      | 913                      | 577                      |
| SK                | 577338          | 294578          | 773                      | 316                      | 847                      | 747                      |
| DK_W              | 464294          | 597880          | 117                      | 400                      | 1179                     | 960                      |
| UA_W <sup>1</sup> | 339012          | 0               | 420                      | 0                        | 496                      | 0                        |

- Control areas can differ from national borders ( i.e. German block which includes parts of AT, LU and DK ).

- Values are calculated on an hourly base ( MWh ).

- This values are not the provisional values entered in the VULCANUS system, but the definitive values after an eventual correction during the actual date.

- Export Programs: Sum of all positive values of every hour of every border  
 - Import Programs: Sum of all negative values of every hour of every border

- Export Programs at 03:00: Sum of all positive values the third Wednesday from 02:00 to 03:00 a.m.  
 - Import Programs at 03:00: Sum of all negative values the third Wednesday from 02:00 to 03:00 a.m.

- Export Programs at 11:00: Sum of all positive values the third Wednesday from 10:00 to 11:00 a.m.  
 - Import Programs at 11:00: Sum of all negative values the third Wednesday from 10:00 to 11:00 a.m.

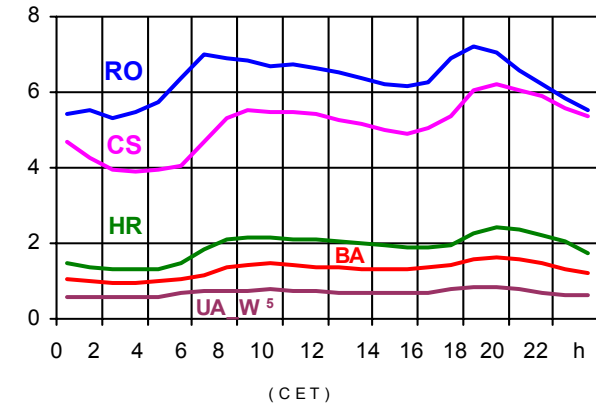
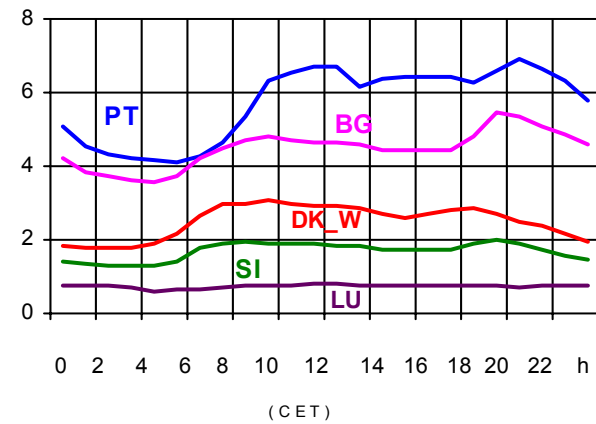
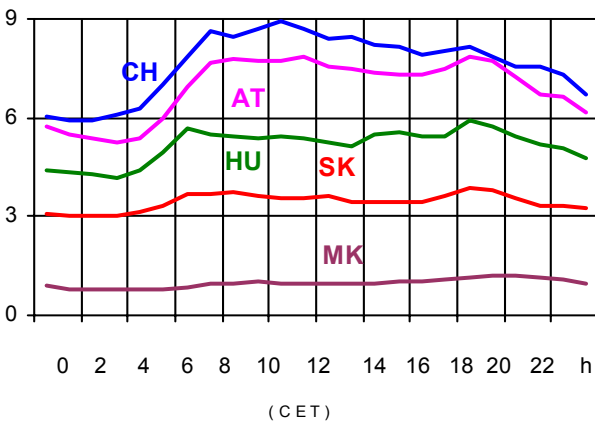
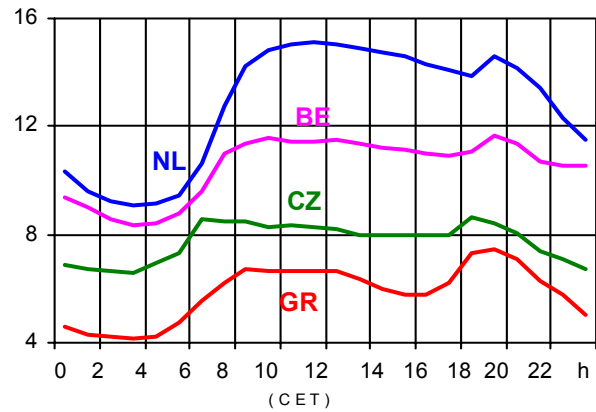
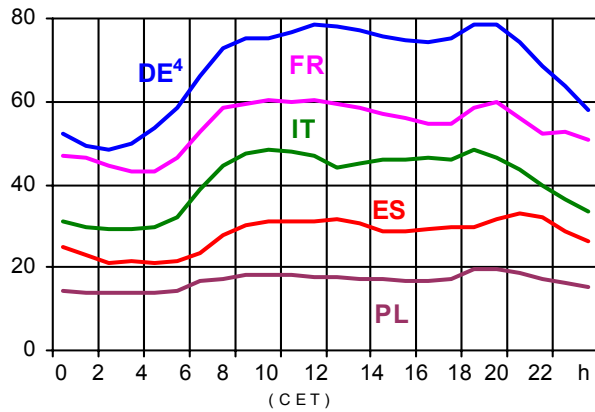
<sup>1</sup> UA\_W represents the so-called Burshtyn Island synchronously interconnected with UCTE



All values are calculated to represent 100% of the national values

### Consumption hourly load curves<sup>1</sup> on 19.10.2005

Values in GW



|                   | Peak load<br>MW | var.% <sup>2</sup> | Load<br>representativity <sup>1</sup><br>% | Parallel<br>power <sup>3</sup><br>MW |
|-------------------|-----------------|--------------------|--|--------------------------------------|
| AT                | 7873            | -17,2              | 100  | 9175                                 |
| BA                | 1630            | 5,6                | 100  | 1617                                 |
| BE                | 11631           | -0,5               | 100  | 10327                                |
| BG                | 5467            | 18,5               | 100  | 5327                                 |
| CH                | 8925            | 2,2                | 100  | 9649                                 |
| CS                | 6222            | 10,6               | 100  | 5631                                 |
| CZ                | 8661            | 1,0                | 100  | 10495                                |
| DE <sup>4</sup>   | 78791           | 0,6                | 91   | 76800                                |
| ES                | 33198           | -2,5               | 98   | 31387                                |
| FR                | 60204           | -2,3               | 100  | 68150                                |
| GR                | 7429            | 10,9               | 100  | 6263                                 |
| HR                | 2443            | 9,8                | 100  | 1819                                 |
| HU                | 5912            | 4,3                | 100  | 4148                                 |
| IT                | 48320           | 0,3                | 100  | 40421                                |
| LU                | 797             | -17,0              | 99   | 828                                  |
| MK                | 1220            | 28,6               | 100  | 861                                  |
| NL                | 15151           | 2,0                | 100  | 12336                                |
| PL                | 19698           | 0,8                | 100  | 20442                                |
| PT                | 6898            | -1,0               | 97   | 5467                                 |
| RO                | 7192            | 3,3                | 100  | 6729                                 |
| SI                | 1998            | 2,8                | 95   | 2079                                 |
| SK                | 3837            | 1,6                | 100  | 3558                                 |
| <b>UCTE</b>       | <b>336904</b>   | <b>1,3</b>         |  | <b>333509</b>                        |
| DK_W              | 3064            | -3,9               | 100  | 3471                                 |
| UA_W <sup>5</sup> | 857             | 6,2                | 100  | 1211                                 |

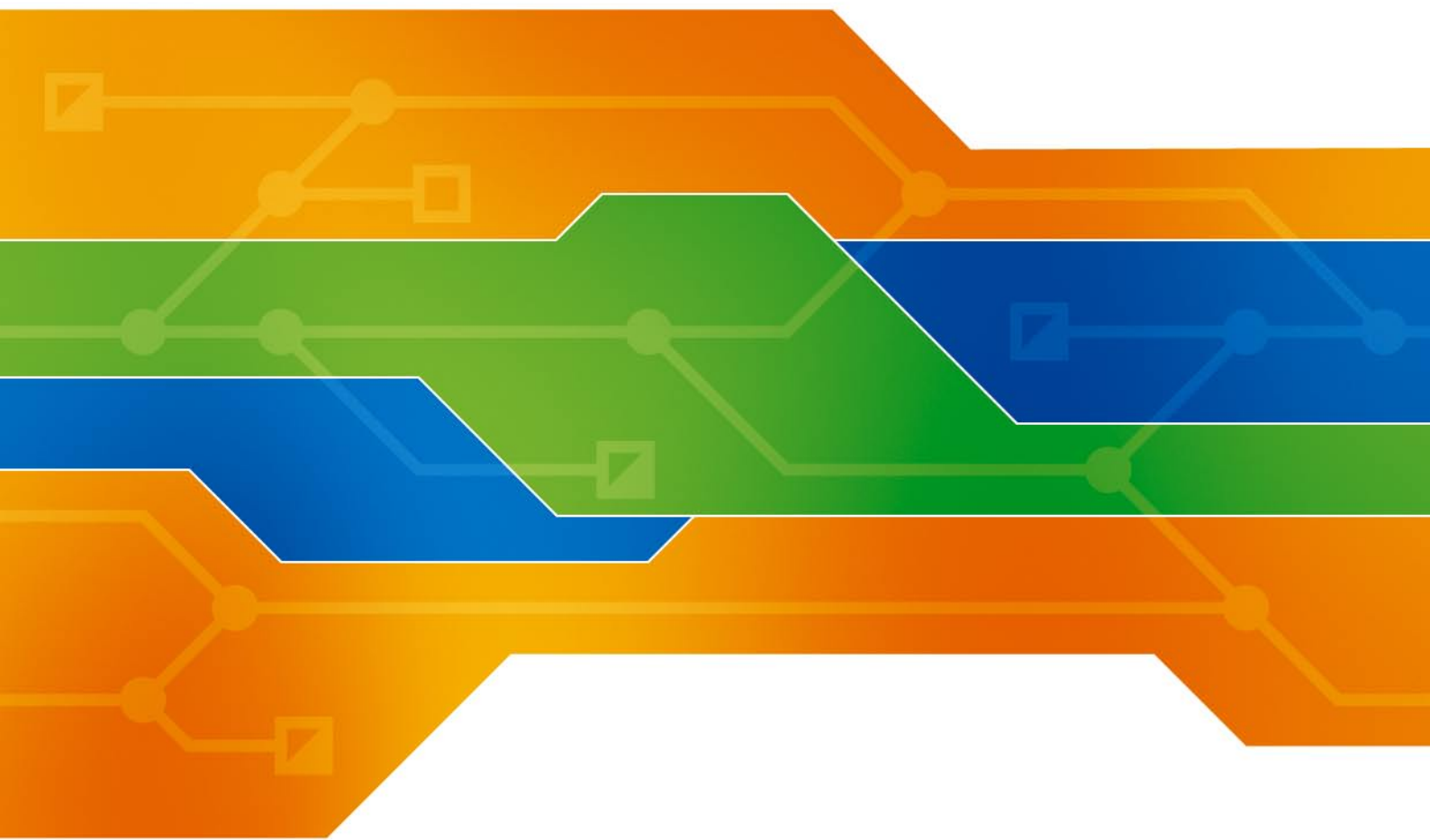
<sup>1</sup> Percentage as referred to total values in %

<sup>2</sup> Variation as compared to corresponding month of the previous year

<sup>3</sup> Power produced in parallel operation (including autoproduction)

<sup>4</sup> Values estimated on the basis of the vertical load. The vertical load is the total amount of the power flows out of the transmission network into distribution and large consumer networks.

<sup>5</sup> UA\_W represents the so-called Burshtyn Island synchronously interconnected with UCTE



## Contact

Boulevard Saint-Michel, 15  
B-1040 Brussels - Belgium  
Tel +32 2 741 69 40 - Fax +32 2 741 69 49

[info@ucte.org](mailto:info@ucte.org)  
[www.ucte.org](http://www.ucte.org)