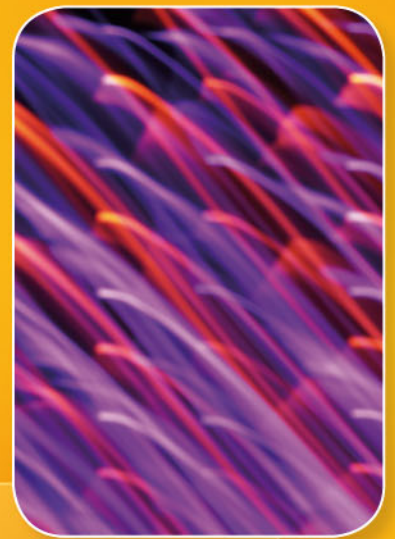


UCTE



September 2007

Monthly provisional values
union for the co-ordination of transmission of electricity

Table of contents		Page
1	Electricity supply situation of the countries	2
2	Physical energy flows	3
3	Monthly consumption	4
4	Monthly consumption variation	6
5	Consumption of the last 12 months	8
6	Variation of the last 12 months' consumption	10
7	Load flows (night)	12
8	Load flows (day)	13
9	Unavailability of international tie lines (major events)	14
10	Network reliability (major events)	16
11	Scheduled exchanges	17
12	Load on the 3 rd Wednesday	18

General remarks and abbreviations used in the tables

- All values of production and consumption in chapter 1, 3&4, 5&6 and 12 are calculated to represent 100% of the national values.
- DK_W Denmark West represents the Western part of Denmark synchronously interconnected with UCTE (Jutland and Funen).
- UA_W Ukraine West represents the so-called Burshtyn Island synchronously interconnected with UCTE.
- CET Central European Time
- The Bulgarian values of production and consumption are gross values.

Countries	Net production in GWh							Exchange balance in GWh	Pump in GWh	Consumption in GWh			
	Therm. nuclear	Therm. conv.	Hydro prod	Other renew.	Of which wind	Not identify	Total			monthly	var. [%]	last 12 months	var. [%]
AT	0	1566	3505	0	0	762	5833 ¹	-296	206	5331	2,8	66605	0,1
BA	0	749	226	0	0	0	975	-110	0	865	3,0	10995	-1,9
BE ²	3548	2440	129	254	31	0	6371 ¹	828	143	7056	0,2	88718	-1,4
BG	671	2118	0	0	0	0	2789	-518	38	2233	-17,5	32651	-10,9
CH	2179	168	3153	82	1	0	5582 ¹	-473	191	4918	0,1	62232	-2,2
CZ	1736	4161	173	25	12	0	6095 ¹	-1134	29	4932	4,4	63640	-1,4
DE	9628	26861	2181	5012	3043	0	43682 ¹	-658	765	42259	-1,6	556807	-0,9
ES	4858	13252	1771	2391	1838	0	22272 ¹	-847	340	21084	-1,0	262911	1,6
FR	33300	2926	4024	555	265	0	40805 ¹	-5284	507	35014	3,7	468574	-3,3
GR	0	3812	185	123	106	0	4120 ¹	372	95	4397	2,6	55290	2,7
HR	0	537	259	4	3	0	800 ¹	551	25	1326	21,8	16960	0,5
HU ³	1013	1788	0	0	0	0	2801 ¹	487	0	3288	2,4	41009	1,3
IT	0	20894	2919	722	310	0	24535 ¹	3615	537	27613	-2,3	337533	0,3
LU	0	188	70	10	3	0	268	345	91	522	-4,0	6726	2,2
ME	0	37	38	0	0	0	75	270	0	345	n.a.	3402	n.a.
MK	0	305	91	0	0	0	396 ¹	197	0	593	4,0	8223	-2,2
NL	148	6912	0	657	273	0	7717 ¹	1613	0	9330	2,7	116577	0,7
PL	0	11722	230	52	41	0	12004 ¹	-623	93	11288	5,3	139691	2,8
PT	0	2356	487	439	279	0	3282 ¹	843	28	4097	0,6	51119	0,8
RO	639	2419	1236	0	0	0	4294 ¹	-109	21	4164	1,2	53428	1,4
RS	0	2002	697	0	0	0	2699	104	106	2697	n.a.	28355	n.a.
SI	491	380	275	0	0	0	1146	-47	0	1099	0,5	13423	2,4
SK	954	494	418	30	0	0	1896 ¹	290	11	2175	5,7	27215	-0,1
DK_W	0	1196	2	689	580	0	1887 ¹	-159	0	1728	1,6	21679	-0,1
UCTE⁴	59165	109283	22069	11045	6785	762	202324¹	-743	3226	198354	1,5	2545221	0,3
UA_W	0	565	14	0	0	0	579 ¹	-279	0	300	0,3	4172	-5,5

¹ Including deliveries from industry

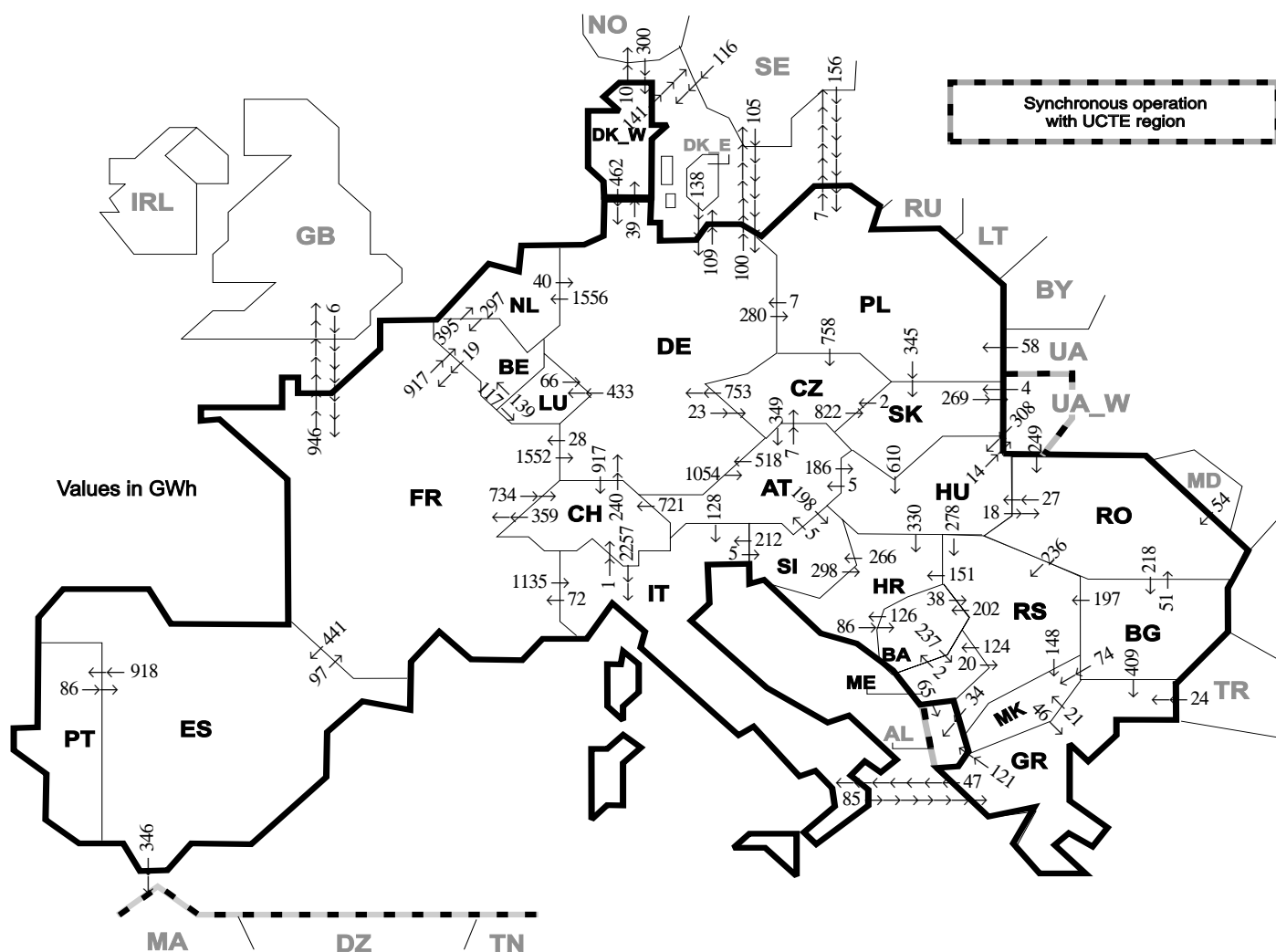
² The reported figures are best estimates based on actual measurements and extrapolations

³ Data on hydro, other renewable, not clearly identifiable production are not yet available

⁴ From June 2007 on including DK_W

All representativities of the national production and consumption values used to calculate values at a representativity of 100% as stated in the table above

Countries	AT	BA	BE	BG	CH	CZ	DE	ES	FR	GR	HR	HU	IT	LU	ME	MK	NL	PL	PT	RO	RS	SI	SK	DK_W	UA_W
Production																									
Therm.nuclear	100	100	100	100	100	100	100	100	100	100	100	100	100	100	100	100	100	100	100	100	100	100	100	100	100
Thermal conv.	100	100	100	100	100	100	100	97	100	100	100	100	100	100	100	100	100	100	95	100	100	100	100	100	100
Hydro prod	100	100	100	100	100	100	100	100	100	100	100	100	100	100	100	100	100	100	100	100	100	100	100	100	100
Other renew.	100	100	100	100	100	100	100	95	100	100	100	100	100	100	100	100	100	100	100	100	100	100	100	100	100
Not identify	100	100	100	100	100	100	100	100	100	100	100	100	100	100	100	100	100	100	100	100	100	100	100	100	100
Consumption	100	100	100	100	100	100	100	98	100	100	100	100	100	100	100	100	100	100	97	100	100	95	100	100	100

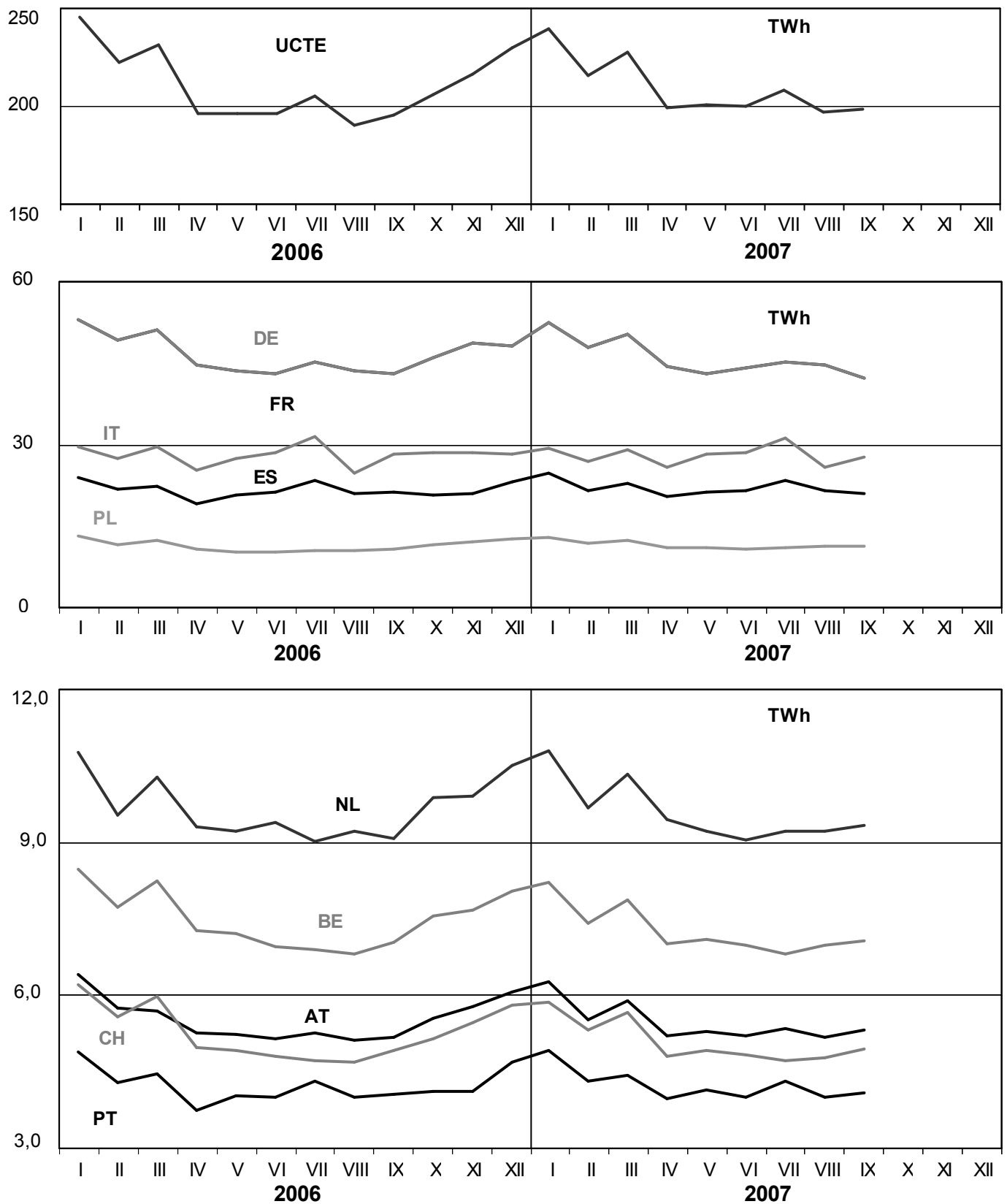


Exporting countries	AT	BA	BE	BG	CH	CZ	DE	ES	FR	GR	HR	HU	IT	LU	ME	MK	NL	PL	PT	RO	RS	SI	SK	DK_W	UA_W	Other III ¹	Sum export
AT	-	-	-	-	721	7	518	-	-	-	-	186	128	-	-	-	-	-	-	-	-	198	-	-	-	-	1758
BA	-	-	-	-	-	-	-	-	-	-	126	-	-	-	237	-	-	-	-	-	38	-	-	-	-	-	401
BE	-	-	-	-	-	-	-	19	-	-	-	-	117	-	-	395	-	-	-	-	-	-	-	-	-	-	531
BG	-	-	-	-	-	-	-	-	409	-	-	-	-	-	-	74	-	-	51	197	-	-	-	-	-	0	731
CH	0	-	-	-	-	-	240	-	359	-	-	2257	-	-	-	-	-	-	-	-	-	-	-	-	-	-	2856
CZ	349	-	-	-	-	-	753	-	-	-	-	-	-	-	-	-	0	-	-	-	-	822	-	-	-	-	1924
DE	1054	-	-	-	917	23	-	28	-	-	-	433	-	-	1556	280	-	-	-	-	-	-	39	-	209	4539	
ES	-	-	-	-	-	-	-	97	-	-	-	-	-	-	-	-	-	918	-	-	-	-	-	-	-	346	1361
FR	-	-	917	-	734	-	1552	441	-	-	-	1135	-	-	-	-	-	-	-	-	-	-	-	-	-	946	5725
GR	-	-	-	0	-	-	-	-	-	-	-	47	-	-	-	21	-	-	-	-	-	-	-	-	-	-	189
HR	-	86	-	-	-	-	-	-	-	-	0	-	-	-	-	-	-	-	-	-	0	266	-	-	-	-	352
HU	5	-	-	-	-	-	-	-	-	-	330	-	-	-	-	-	-	-	18	278	-	0	-	14	-	-	645
IT	0	-	-	-	1	-	-	72	85	-	-	-	-	-	-	-	-	-	-	-	5	-	-	-	-	-	163
LU	-	-	139	-	-	-	66	-	-	-	-	-	-	-	-	-	-	-	-	-	-	-	-	-	-	-	205
ME	-	2	-	-	-	-	-	-	-	-	-	-	-	-	-	-	-	-	-	-	20	-	-	-	65	87	
MK	-	-	-	0	-	-	-	-	-	46	-	-	-	-	-	-	-	-	-	-	-	-	-	-	-	-	46
NL	-	-	297	-	-	-	40	-	-	-	-	-	-	-	-	-	-	-	-	-	-	-	-	-	-	-	337
PL	-	-	-	-	758	7	-	-	-	-	-	-	-	-	-	-	-	-	-	-	-	345	-	-	-	-	1117
PT	-	-	-	-	-	-	-	86	-	-	-	-	-	-	-	-	-	-	-	-	-	-	-	-	-	-	86
RO	-	-	-	218	-	-	-	-	-	-	-	27	-	-	-	-	-	-	-	-	236	-	-	-	0	0	481
RS	-	202	-	0	-	-	-	-	-	-	151	0	-	124	148	-	-	-	0	-	-	-	-	-	-	34	659
SI	5	-	-	-	-	-	-	-	-	298	-	212	-	-	-	-	-	-	-	-	-	-	-	-	-	-	515
SK	-	-	-	-	2	-	-	-	-	-	610	-	-	-	-	-	-	0	-	-	-	-	-	-	-	-	881
DK_W	-	-	-	-	-	-	462	-	-	-	-	-	-	-	-	-	-	-	-	-	-	-	-	-	151	613	
UA_W	-	-	-	-	-	-	-	-	-	-	-	308	-	-	-	-	-	-	-	249	-	4	-	-	-	-	561
Other III ¹	-	-	-	0	-	-	243	0	6	24	-	-	-	-	0	-	-	214	54	0	-	-	416	-	-	957	
Sum imp	1413	290	1353	218	2373	790	3881	527	581	564	905	1131	3779	550	361	243	1951	494	918	372	769	469	1171	455	283	1879	27720

Sum of physical energy flows between UCTE countries = 24040GWh Total physical energy flows = 27720GWh

¹ Other III: Albania, Belarus, Denmark East, Great Britain, Morocco, Republic of Moldavia, Norway, Sweden, Republic of Turkey and Ukraine

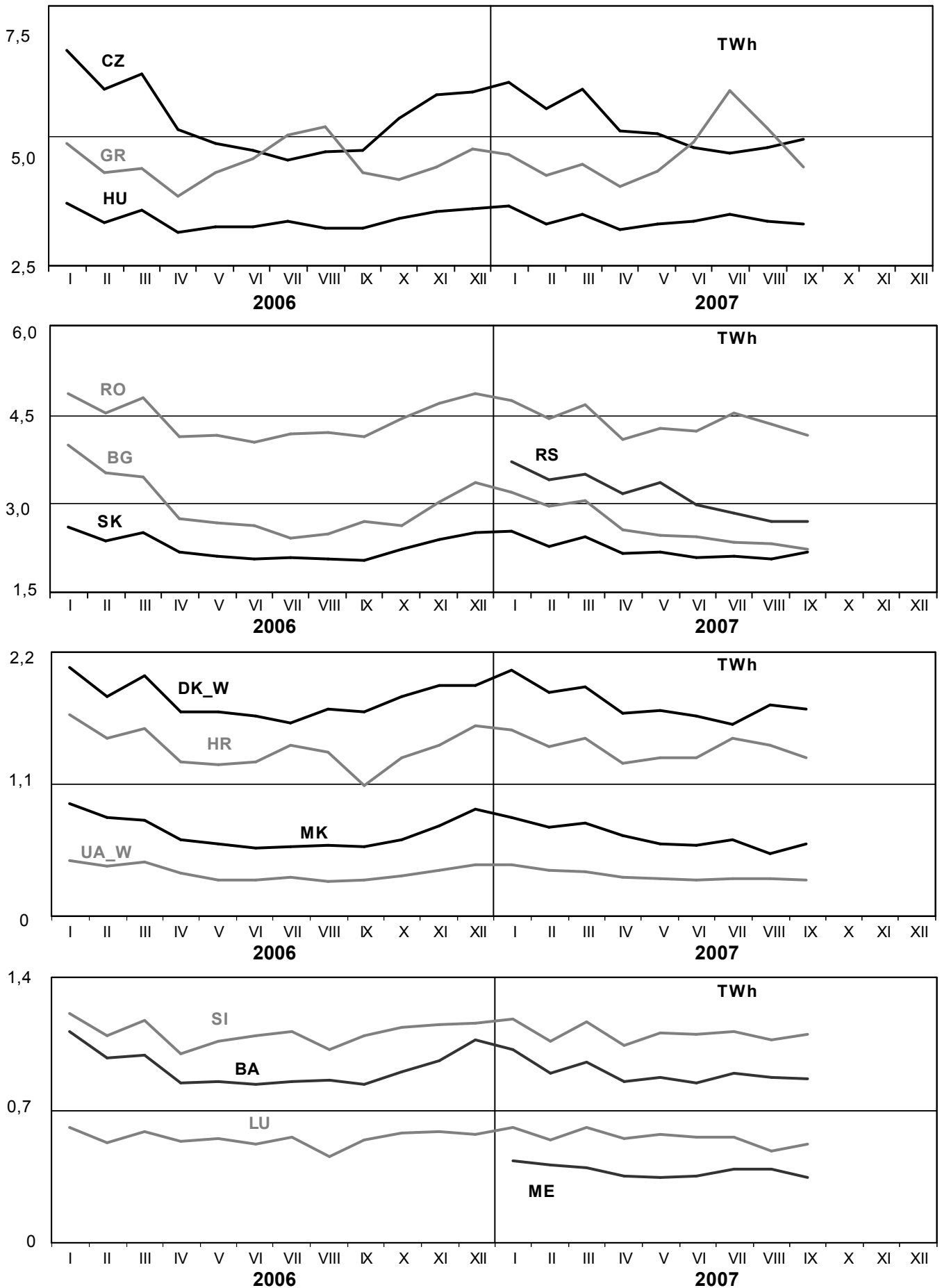
These physical energy flows were measured on the cross-frontier transmission lines (≤ 110 kV) listed in table 9 of the Statistical Yearbook. These values may differ from the official statistics and the exchange balances in chapter 1.



3

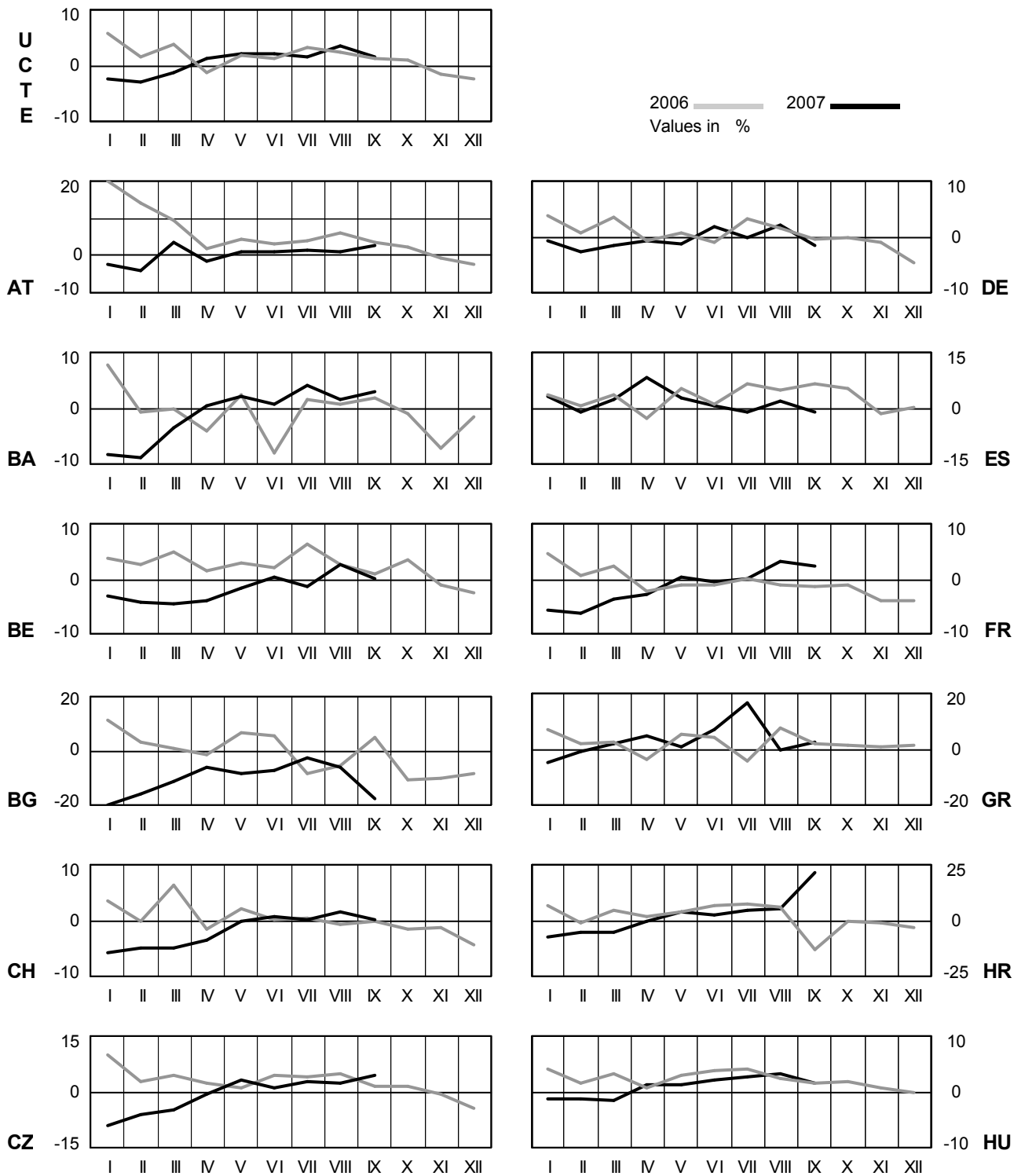
Monthly consumption

September 2007



4 Monthly consumption variation

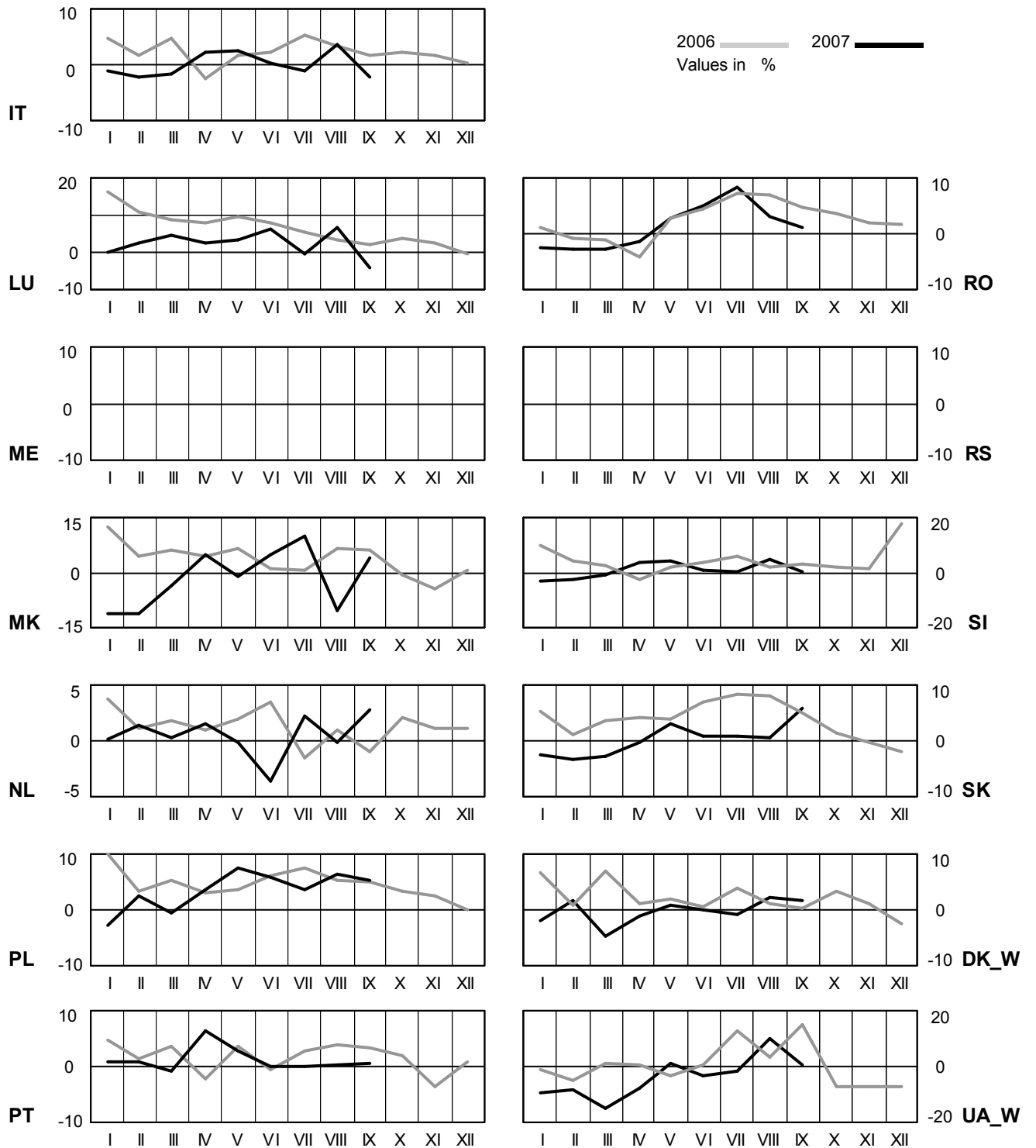
September 2007



4

Monthly consumption variation

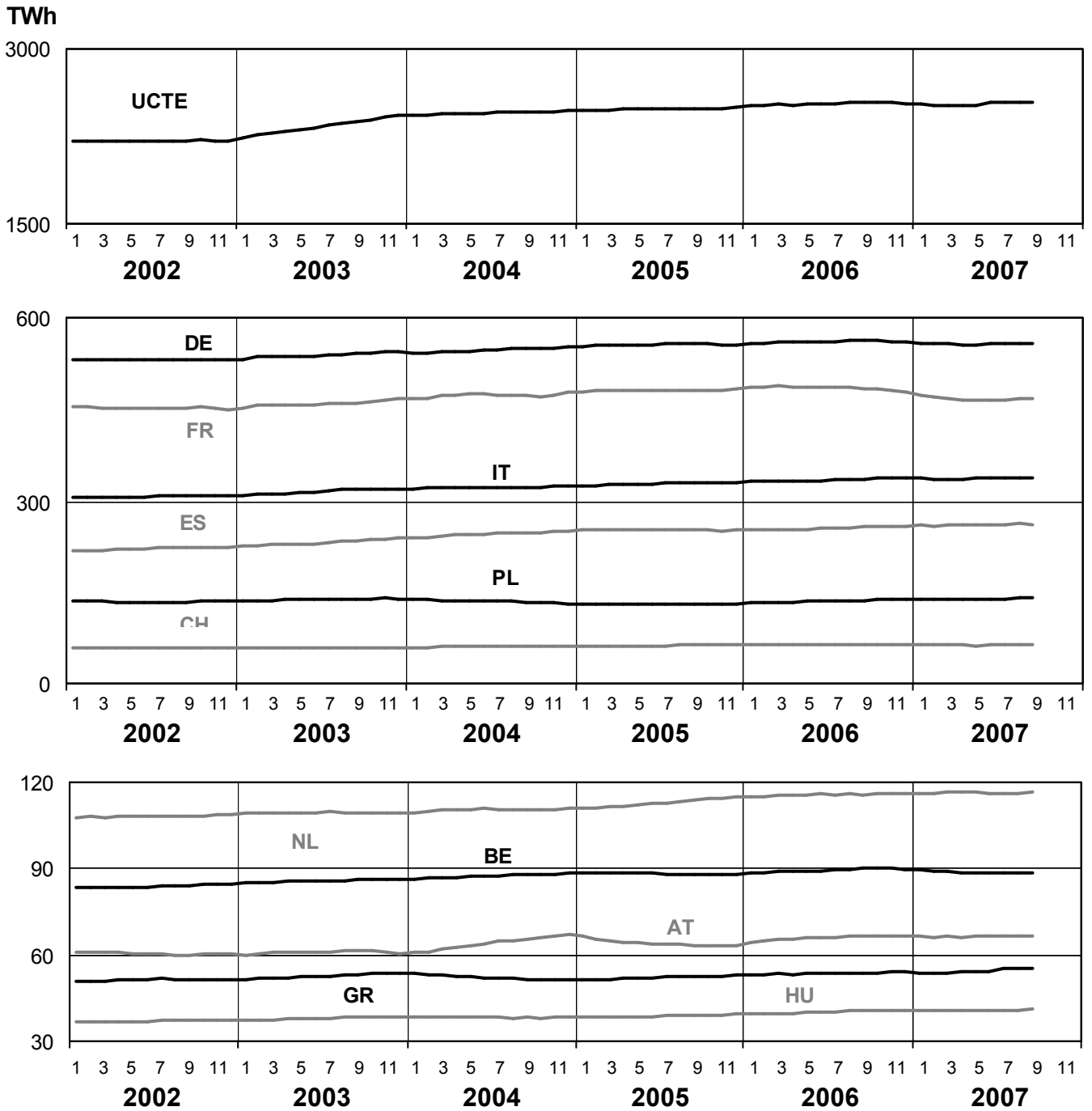
September 2007



5

Consumption of the last 12 months

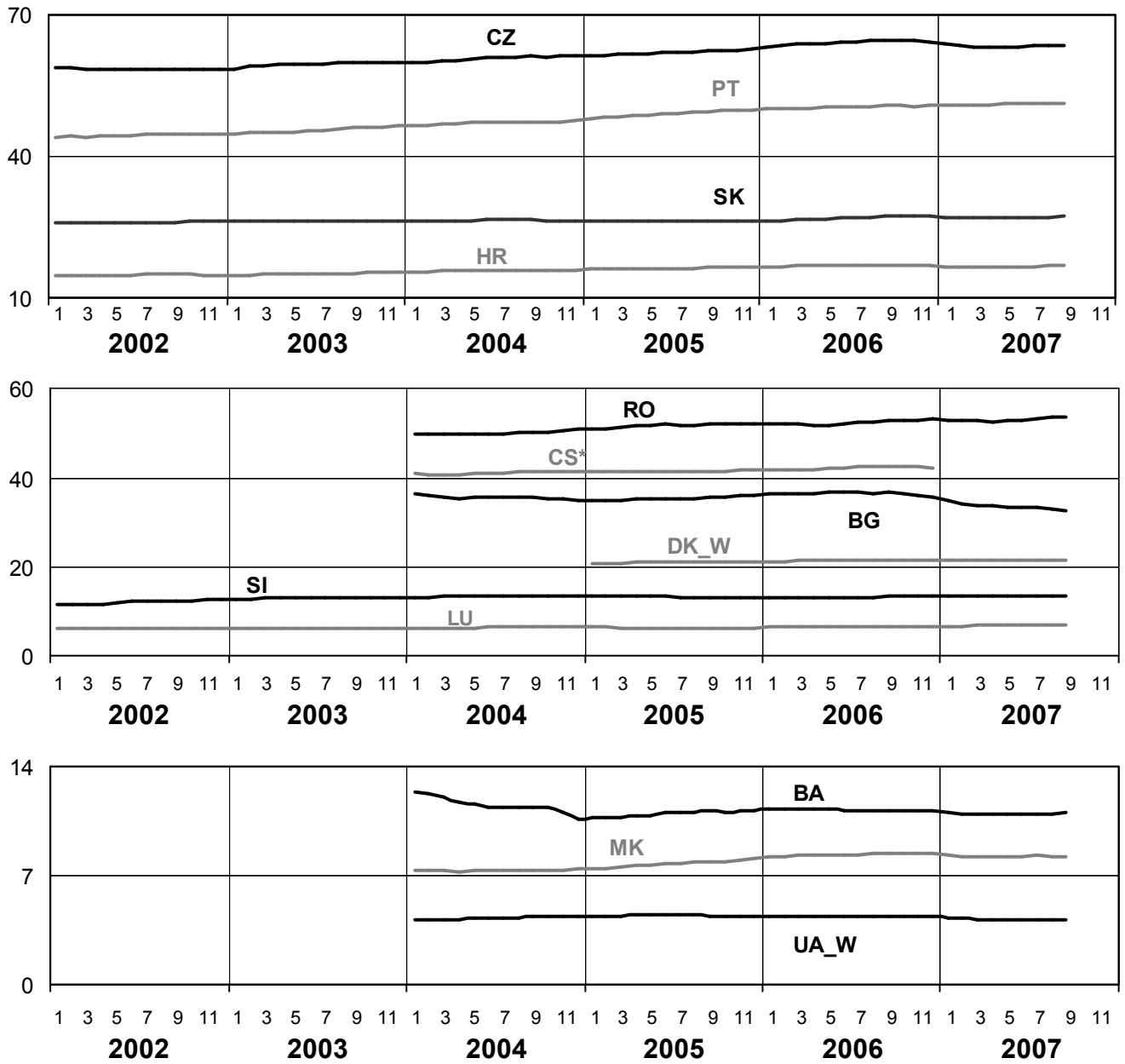
September 2007



5

Consumption of the last 12 months

September 2007

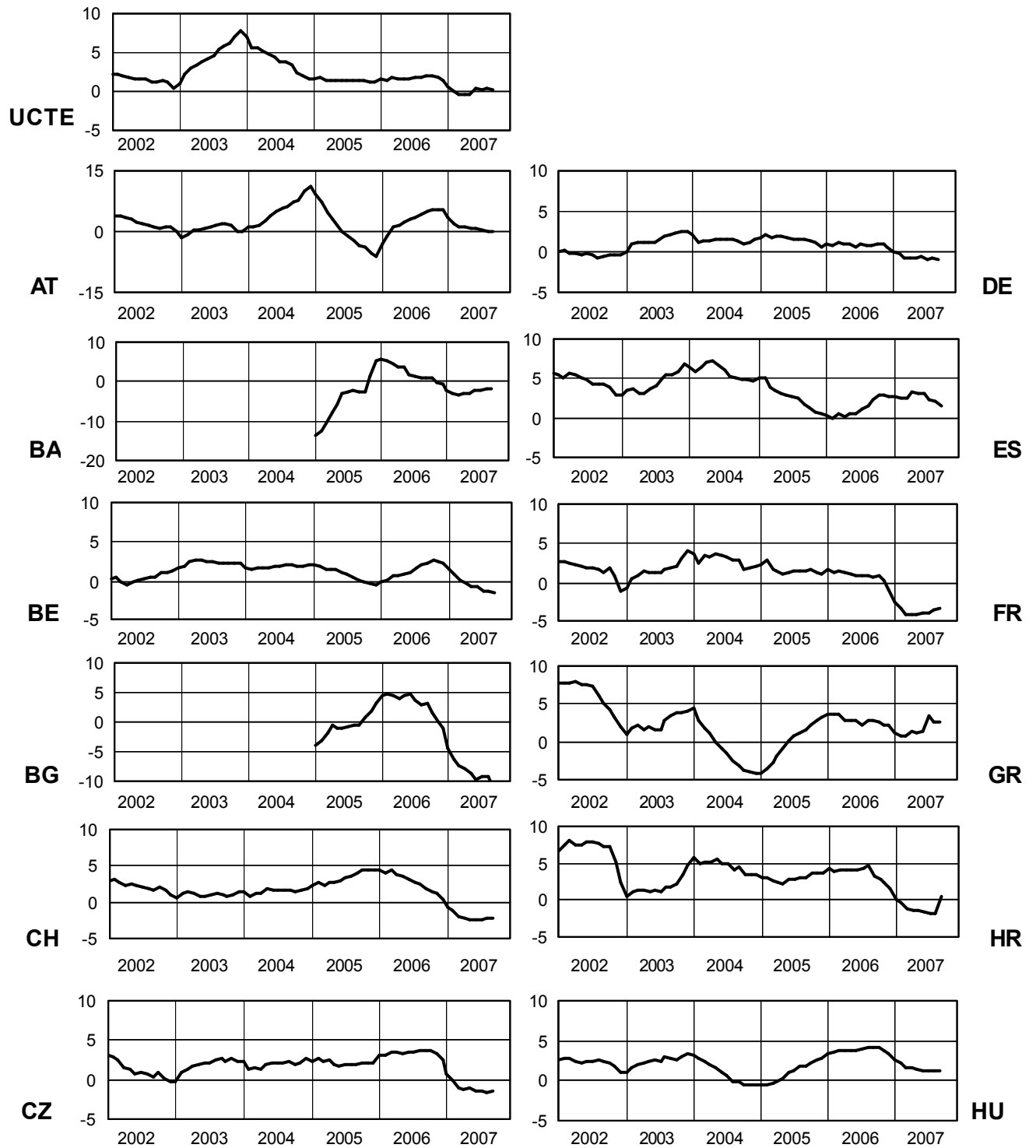


* CS consumption values until December 2006; from 2007 on ME and RS as separate countries

6

Variation of the last 12 months' consumption in %

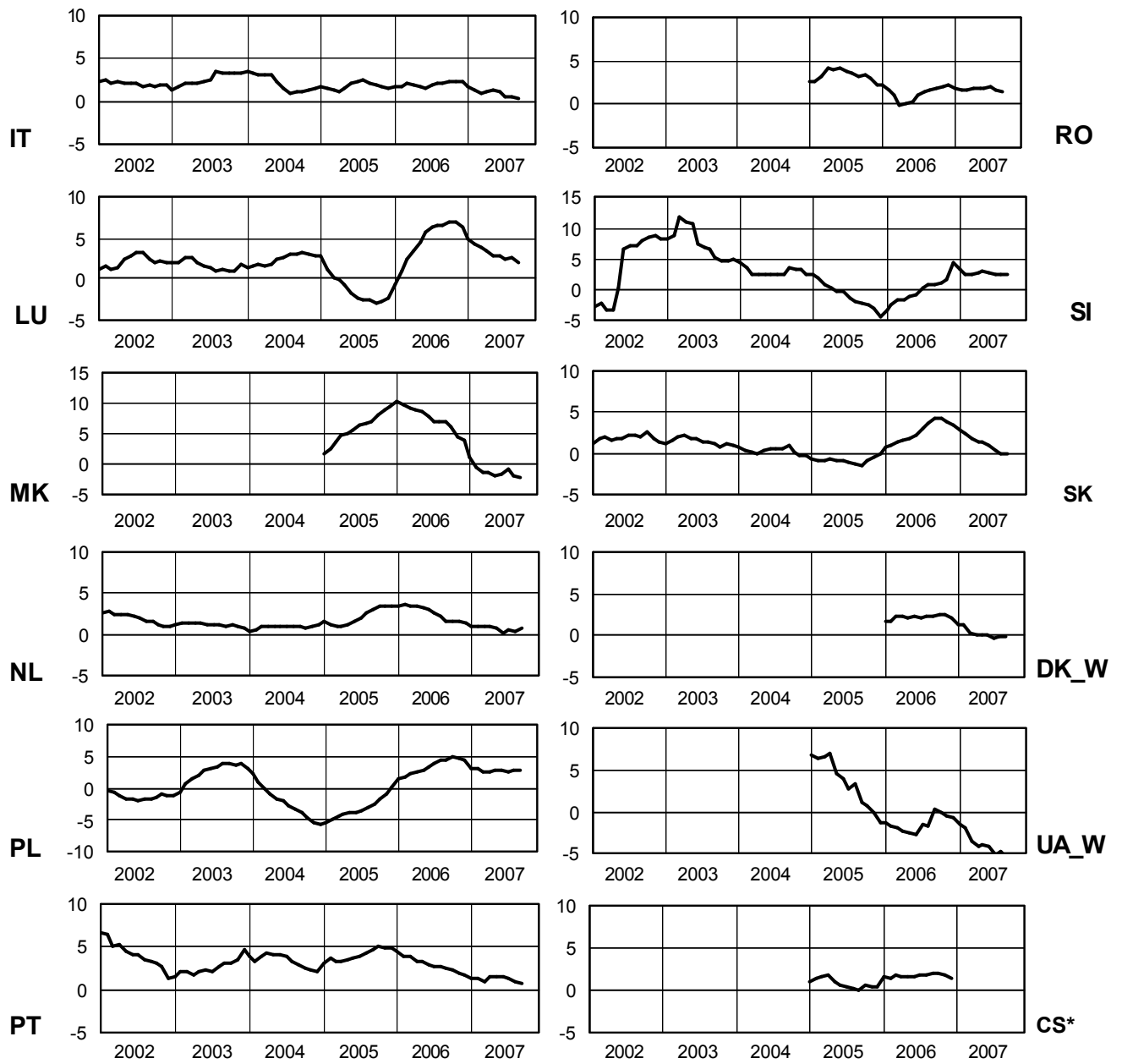
September 2007



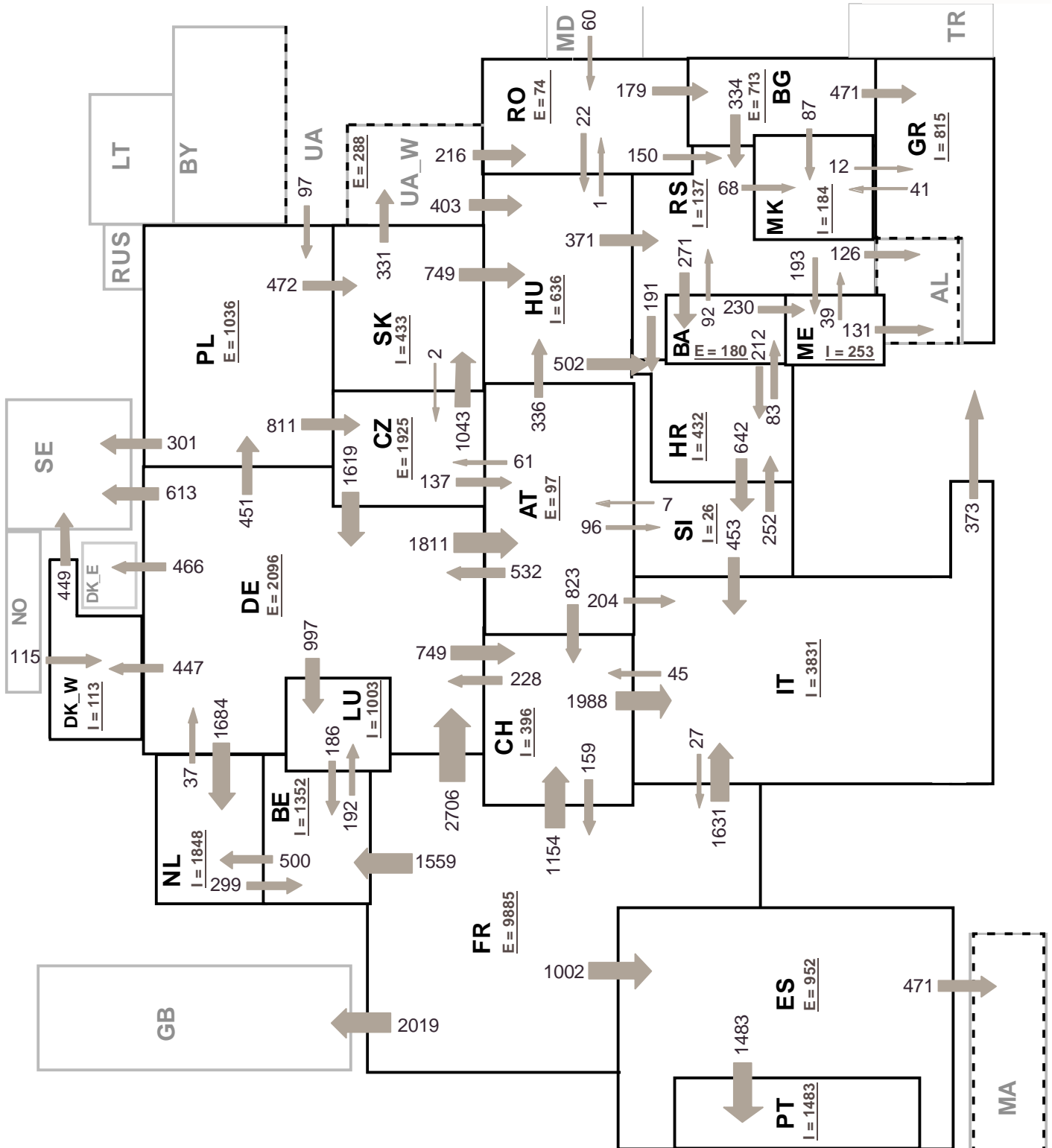
6

Variation of the last 12 months' consumption in %

September 2007



* CS consumption values until December 2006; from 2007 on ME and RS as separate countries



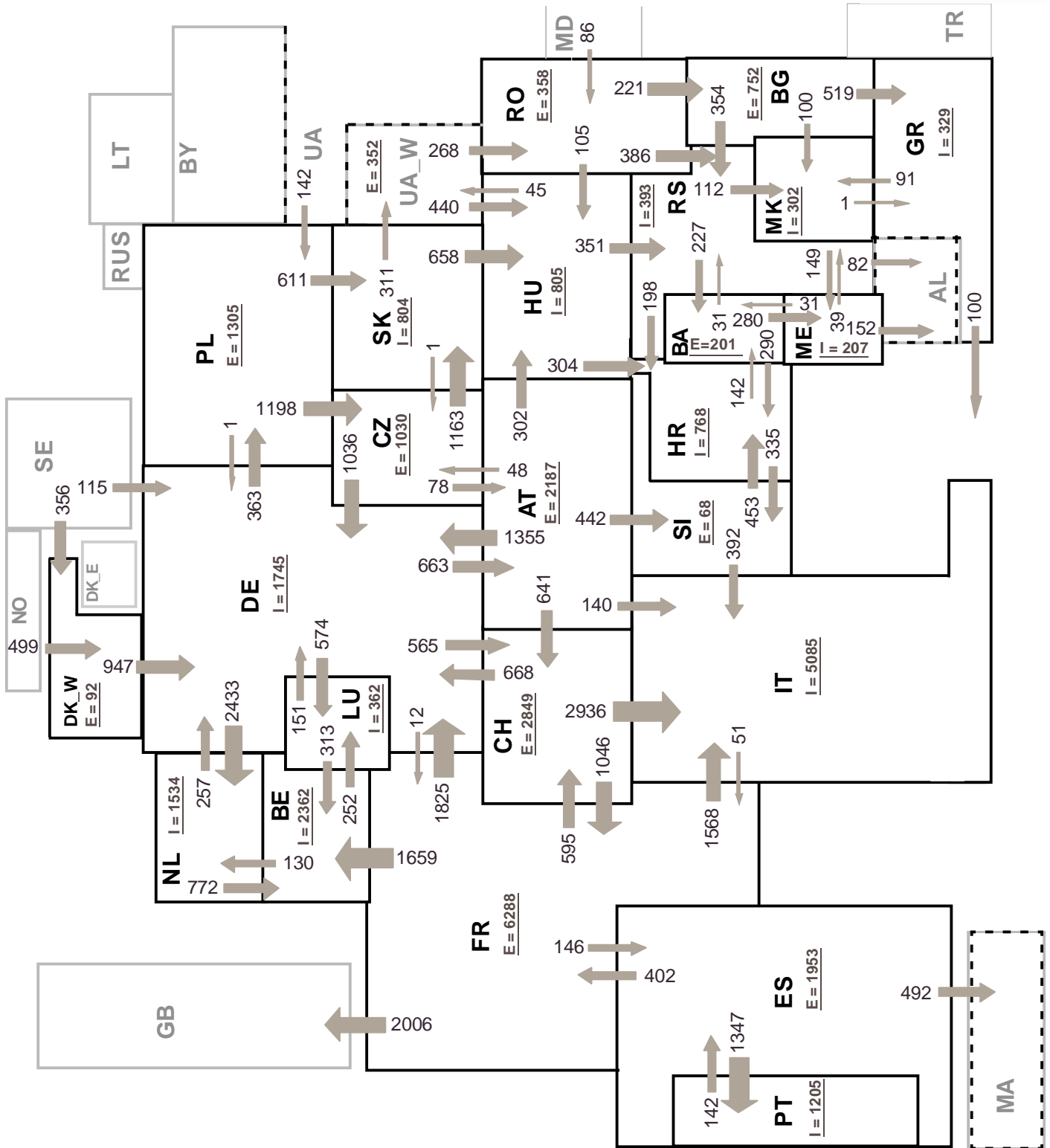
Sum of load flows in MW

UCTE = 31496 MW

Total = 37294 MW

Synchronous operation with UCTE region

I = Import balance
E = Export balance



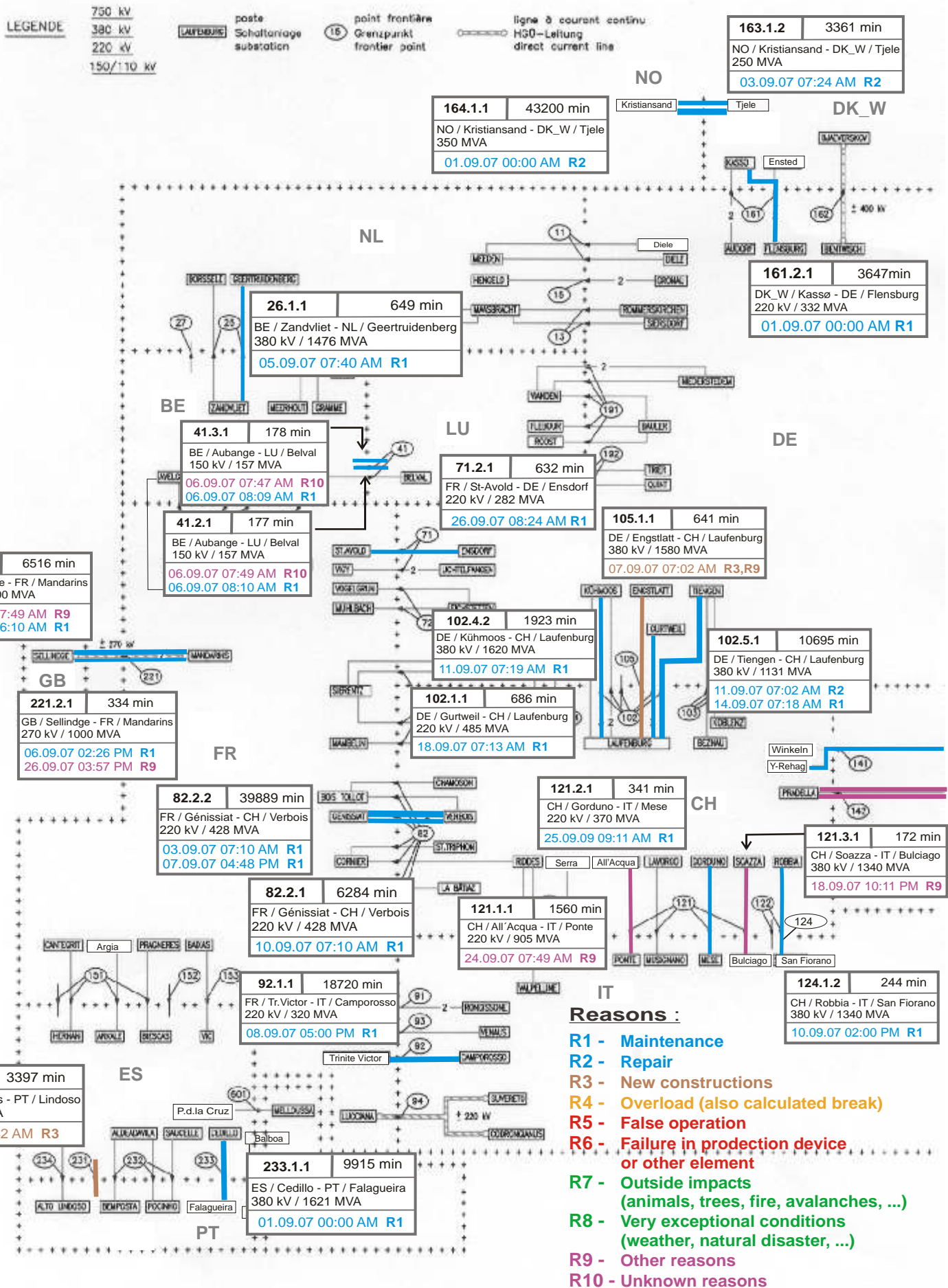
Sum of load flows in MW

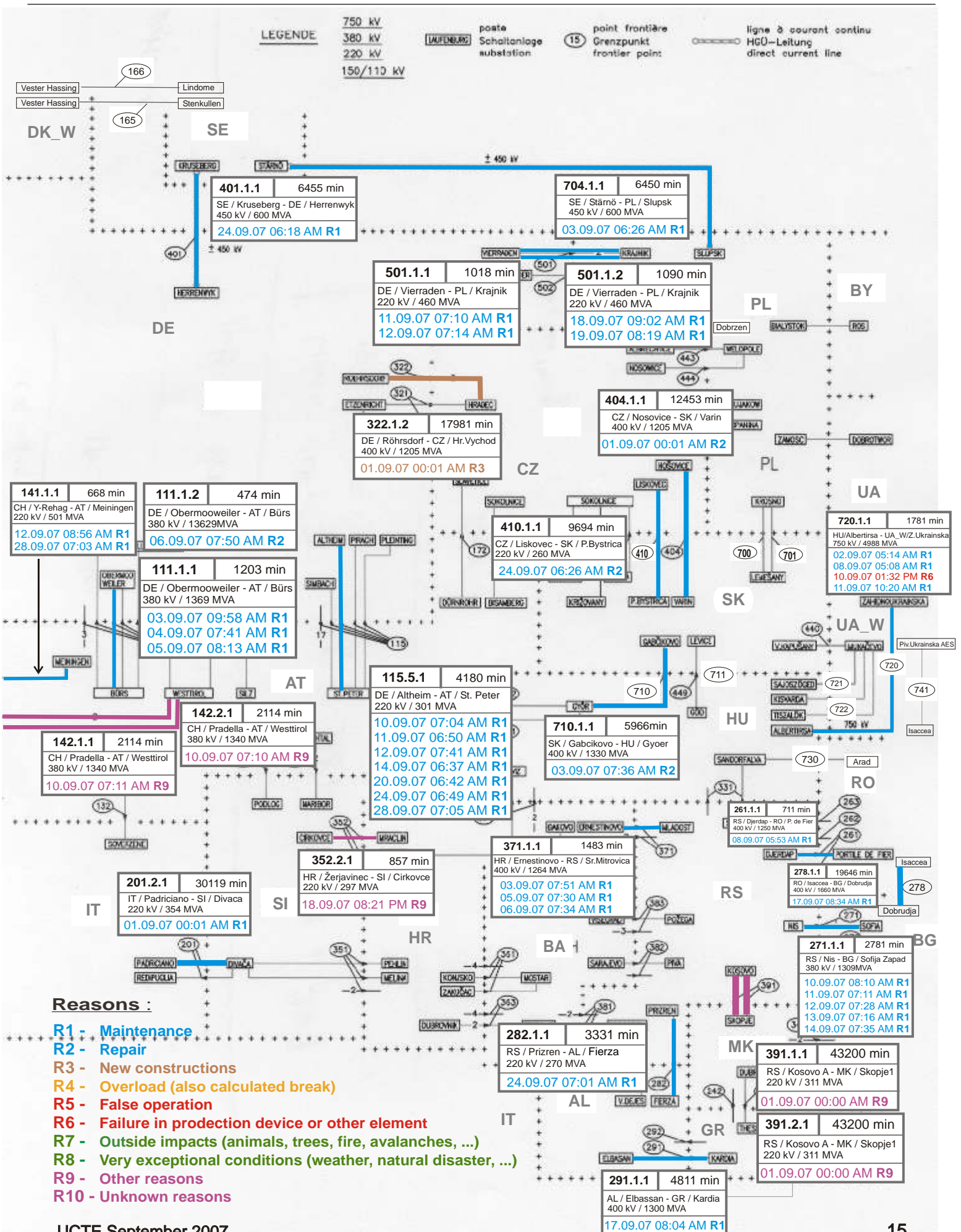
UCTE = 32702 MW

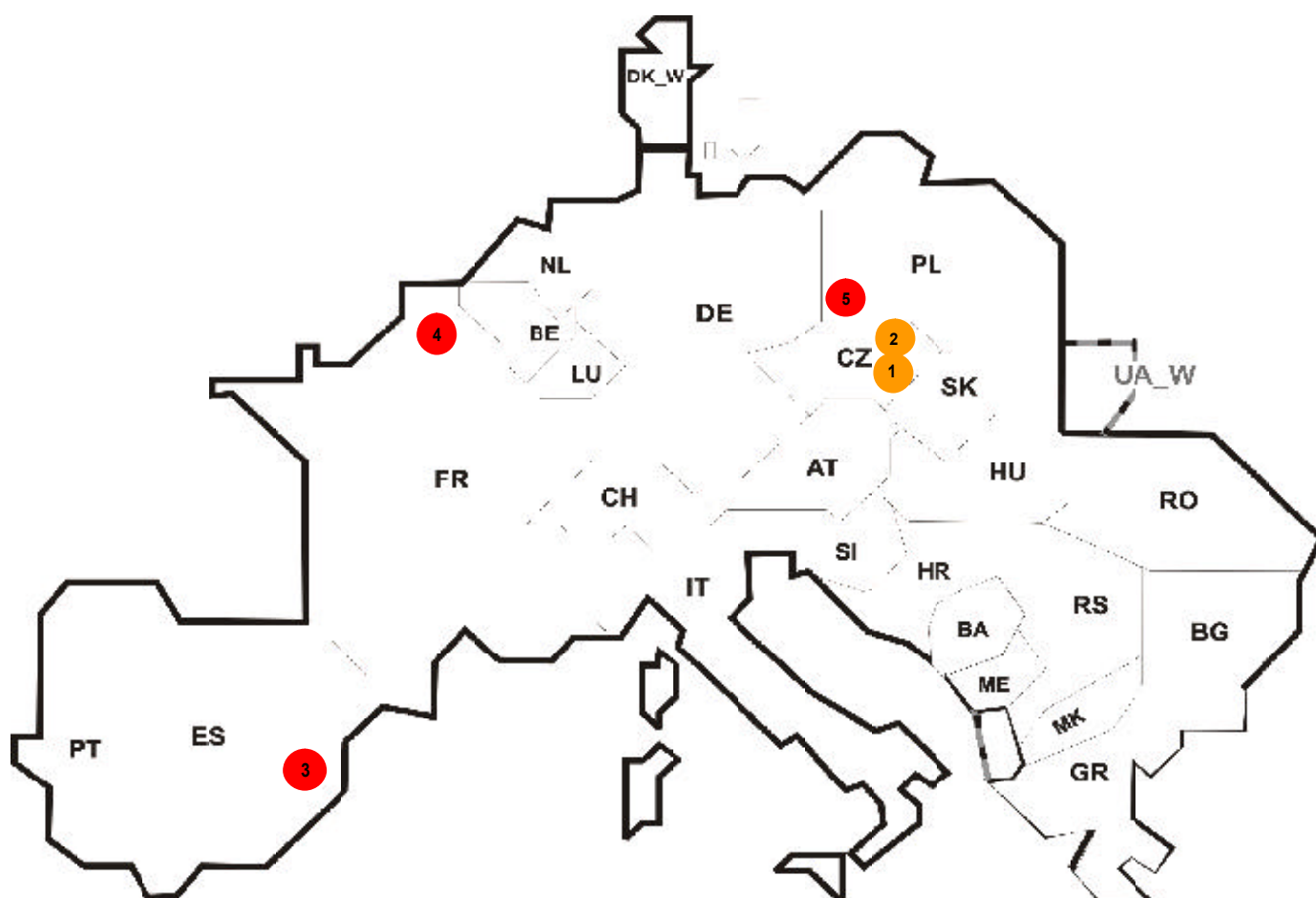
Total = 37696 MW

Synchronous operation with UCTE region

I = Import balance
E = Export balance







Reasons:

R4 Overload (also calculated break)

R5 False operation

R6 Failure in protection device or other element

R7 Outside impacts (animals, trees, fire, avalanches, ...)
(animals, trees, fire, avalanches, ...)

R8 Very exceptional conditions
(weather, natural disaster, ...)

R9 Other reasons

R10 Unknown reasons

No	Country	Substation	Reason	Energy not supplied ² [MWh]	Total loss of power [MW]	Restoration time [min]	Equivalent time of interruption ¹
1	CZ	Otrokovice	R4	289	29	6	2,387
2	CZ	Cebin	R4	105	9	5	0,867
3	ES	Hospitalet	R5	16	0	15	0,033
4	FR	Vendin	R5	4	41	6	0,004
5	PL	Mikulowa	R5	0	246	19	0,000

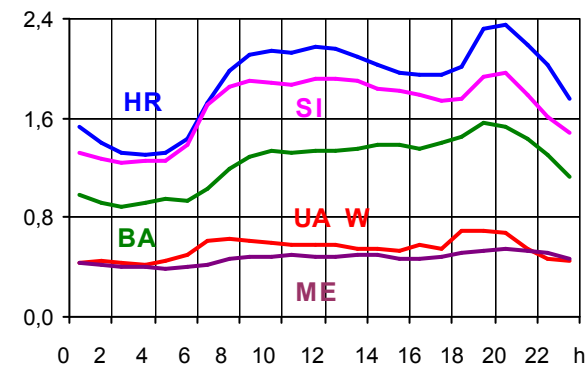
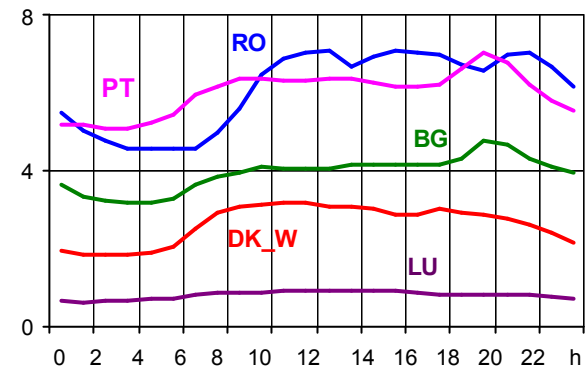
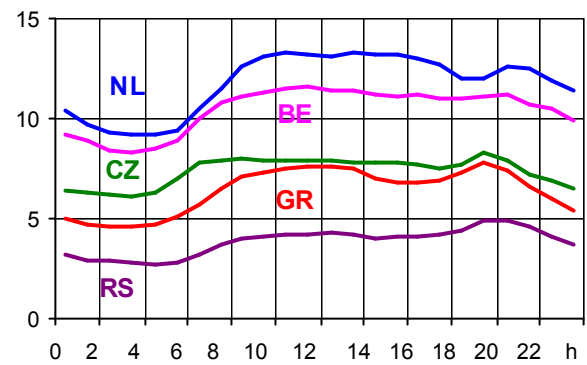
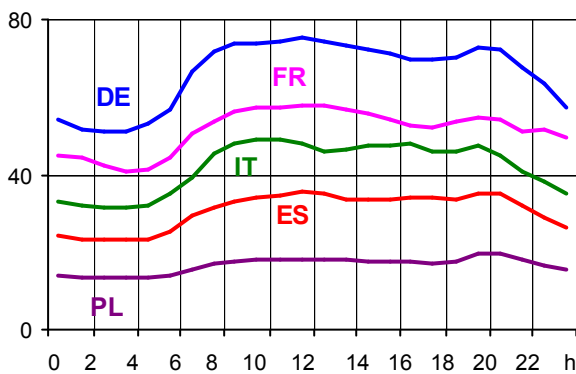
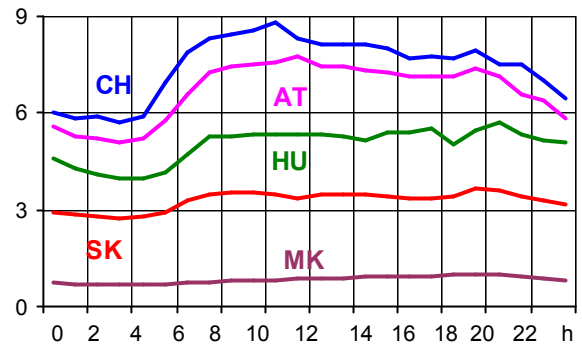
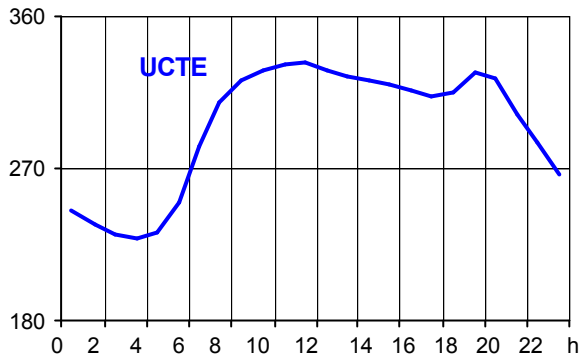
¹ (year [in min] * energy not supplied) / consumption last 12 months

Control area	Export Programs	Import Programs	Export Programs at 03:00	Import Programs at 03:00	Export Programs at 11:00	Import Programs at 11:00
AT	658944	930377	1760	588	1761	1032
BA	372501	260101	291	165	365	165
BE	395068	1194251	379	1795	0	2330
BG	n.a.	n.a.	n.a.	n.a.	n.a.	n.a.
CH	2420155	1945165	2321	2726	4863	2011
CZ	2043935	873081	3306	1310	2900	1826
DE	2776481	1891149	2276	2841	3822	4458
ES	1364898	511603	2134	1097	2364	315
FR	7245683	2112448	11091	1169	9949	3560
GR	53914	422608	0	525	0	508
HR	195194	745065	185	977	209	975
HU	587686	1074000	802	1439	832	1633
IT	163007	3778664	445	4276	51	5136
ME	441356	171646	200	455	200	521
MK	29000	248500	0	202	0	305
NL	215673	1827498	235	2068	1004	2490
PL	752474	235122	1055	160	1300	140
PT	383	842228	0	1500	0	1200
RO	254730	145799	263	196	540	187
RS	375254	469756	409	541	520	776
SI	473305	432215	783	618	785	698
SK	676777	896588	1027	1383	993	1691
DK_W	503481	563212	887	1210	500	945
UA_W	291145	16810	298	14	365	15

- Control areas can differ from national borders (i.e. German block which includes parts of AT, LU and DK).
- Values are calculated on an hourly base (MWh).
- This values are not the provisional values entered in the VULCANUS system, but the definitive values after an eventual correction during the actual date.
- Export Programs: Sum of all positive values of every hour of every border
- Import Programs: Sum of all negative values of every hour of every border
- Export Programs at 03:00: Sum of all positive values the third Wednesday from 02:00 to 03:00 a.m.
- Import Programs at 03:00: Sum of all negative values the third Wednesday from 02:00 to 03:00 a.m.
- Export Programs at 11:00: Sum of all positive values the third Wednesday from 10:00 to 11:00 a.m.
- Import Programs at 11:00: Sum of all negative values the third Wednesday from 10:00 to 11:00 a.m.

Consumption hourly load curves on 19.09.2007 CET

Values in GW



	Highest load		Load representativity %
	MW	var.% ¹	
AT	7735	1,0	100
BA	1557	0,6	100
BE ²	11635	0,3	100
BG	4757	6,4	100
CH	8792	2,8	100
CZ	8271	4,6	100
DE	75384	2,2	91
ES	35486	-0,1	98
FR	58000	5,0	100
GR	7839	6,9	100
HR	2350	2,0	100
HU	5699	3,5	100
IT	49238	2,4	100
LU	946	18,7	100
ME	543	-	100
MK	1021	1,9	100
NL	13309	-8,3	100
PL	19596	6,0	100
PT	7099	0,6	97
RO	7008	2,2	100
RS	4918	-	100
SI	1959	-0,8	95
SK	3662	6,6	100
DK_W	3179	5,2	100
UCTE³	332328	1,8	
UA_W	695	-3,1	100

¹ Variation as compared to corresponding month of the previous year

² The reported figures are best estimates based on actual measurements and extrapolations.

³ From June 2007 on including DK_W



Contact

Boulevard Saint-Michel, 15
B-1040 Brussels – Belgium
Tel +32 2 741 69 40 – Fax +32 2 741 69 49

info@ucte.org
www.ucte.org