



August 2009

Monthly provisional values as of 08 January 2010

European Network of Transmission System Operators for Electricity

Regional Group Continental Europe



Table of contents		Page
1	Electricity supply situation of the countries	2
2	Physical energy flows	3
3	Monthly consumption	4
4	Monthly consumption variation	6
5	Consumption of the last 12 months	8
6	Variation of the last 12 months' consumption	10
7	Load flows (night)	12
8	Load flows (day)	13
9	Unavailability of international tie lines (major events)	14
10	Network reliability (major events)	16
11	Scheduled exchanges	17
12	Load on the 3 rd Wednesday	18

General remarks and abbreviations used in the tables

- Country code UCTE represents the ENTSOE Regional Continental Europe (former all countries of the Union for the Co-ordination of Transmission of Electricity)
- All values of production and consumption in chapter 1, 3&4, 5&6 and 12 are calculated to represent 100% of the national values.
- DK_W Denmark West represents the Western part of Denmark synchronously interconnected with ENTSO-E Regional Continental Europe (Jutland and Funen).
- UA_W Ukraine West represents the so-called Burshtyn Island synchronously interconnected with ENTSO-E Regional Continental Europe
- CET Central European Time
- The Bulgarian load values on the 3rd Wednesday are gross values

Countries	Net production in GWh							Exchange balance in GWh	Pump in GWh	Consumption in GWh			
	Therm. nuclear	Fossil fuels	Hydro prod	Other renew.	Of which wind	Non identifiable	Total			monthly	var. [%]	last 12 months	var. [%]
AT	0	919	3867	0	0	813	5599	-280	328	4991	-4,8	66015	-4,1
BA	0	691	303	0	0	0	994	-115	0	879	-6,4	11098	-4,8
BE ²	3912	3140	135	300	52	0	7487 ¹	-914	166	6407	-6,2	83746	-8,0
BG	1377	1225	312	0	0	0	2914	-445	100	2369	-8,3	33289	-4,0
CH	1213	162	4451	96	2	0	5922 ¹	-889	289	4744	-1,3	63435	-1,6
CZ	1991	3186	243	30	17	0	5450 ¹	-874	67	4509	-5,3	62214	-5,8
DE	10406	23589	1848	4852	1986	0	40695 ¹	139	662	40172	-9,2	531383	-5,0
DK_W	0	927	1	482	375	0	1410 ¹	203	0	1613	-5,7	20895	-4,3
ES	5271	13008	1623	2941	2048	31	22874	-824	239	21811	-1,2	261897	-3,7
FR	28224	2532	3882	747	356	0	35385	-2031	405	32949	0,0	491548	-0,8
GR	0	3825	419	227	190	0	4471 ¹	367	16	4822	-9,7	54257	-4,0
HU	1344	1451	0	0	0	0	2795 ¹	552	0	3347	1,2	17578	-2,3
HR	0	487	390	3	2	0	880 ¹	600	8	1472	0,4	41062	-1,5
IT	0	17931	4033	811	394	0	22775	2851	404	25222	-3,1	322260	-5,8
LU	0	235	64	12	3	0	311	219	88	442	-12,8	6051	-12,8
ME ³	0	131	17	0	0	0	148	241	0	389	n.a.	4788	n.a.
MK	0	407	74	0	0	0	481	132	0	613	-8,0	7993	-10,2
NL	349	7431	0	552	240	0	8332 ¹	399	0	8731	-7,2	116266	-2,3
PL ⁴	0	10491	198	97	79	0	10786 ¹	-3	94	10689	-4,1	137303	-4,9
PT	0	2724	397	668	478	0	3789 ¹	381	81	4089	1,5	51515	-0,9
RO	945	2006	1194	0	0	0	4145	-166	13	3966	-11,7	51517	-7,5
RS	0	2332	681	0	0	0	3013	260	30	3243	16,4	41439	7,4
SI	501	267	322	0	0	0	1090	-191	0	899	-9,9	11600	-11,1
SK	1044	426	335	27	0	0	1832 ¹	149	30	1951	-6,1	25921	-7,5
UCTE	56577	99523	24789	11845	6222	844	193578 ¹	-239	3020	190319	-4,3	2515070	-3,8
UA_W	0	391	5	0	0	0	396	-140	0	256	-7,9	3976	-6,7

¹ Including deliveries from industry

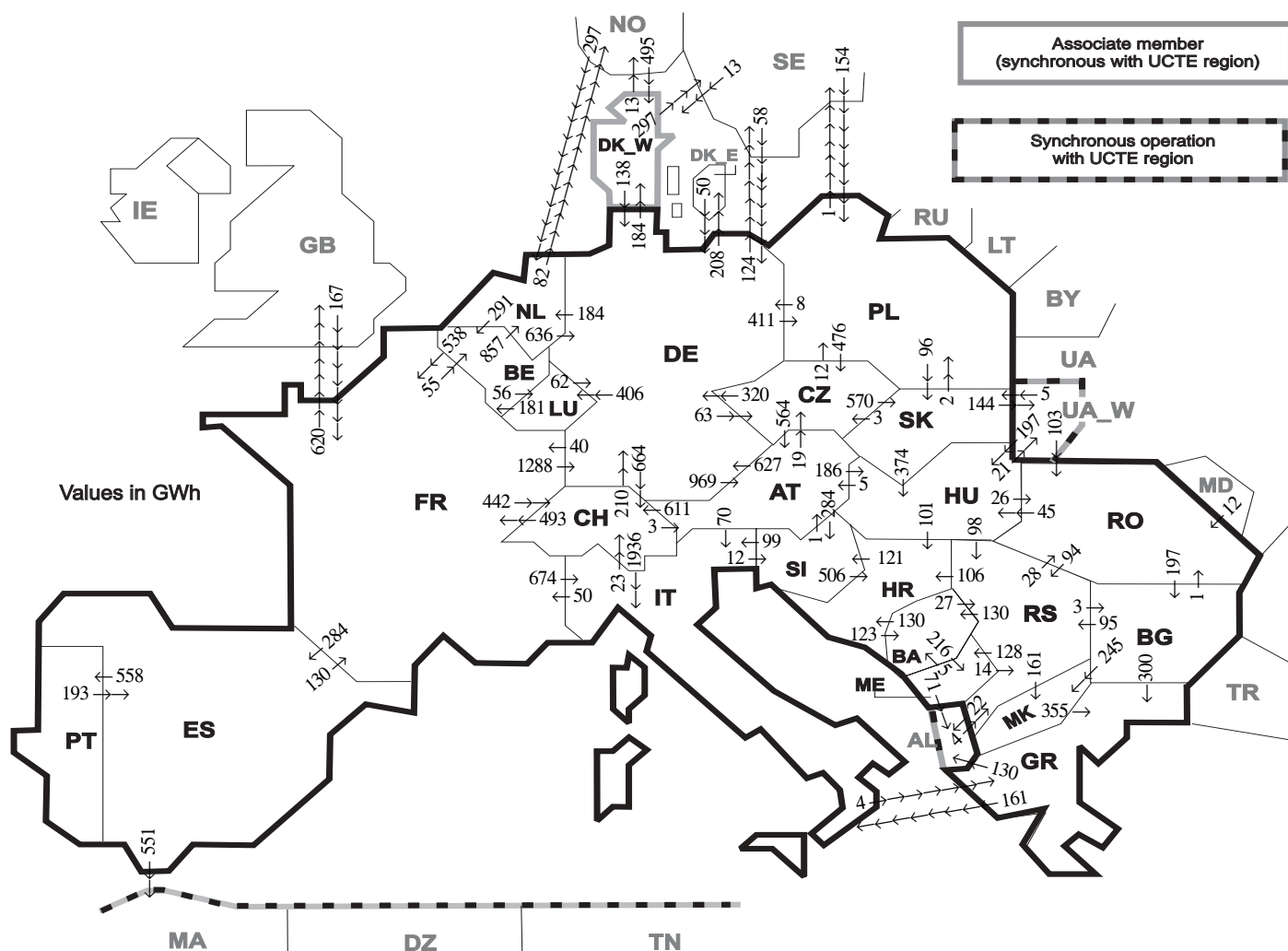
² The reported figures are best estimates based on actual measurements and extrapolations

³ Monthly national values as of August 2008

⁴ Operational data

All representativities of the national production and consumption values used to calculate values at a representativity of 100% as stated in the table above:

Countries	AT	BA	BE	BG	CH	CZ	DE	DK_W	ES	FR	GR	HU	HR	IT	LU	ME	MK	NL	PL	PT	RO	RS	SI	SK	UA_W
Production																									
Therm nuclear	100	100	100	100	100	100	100	100	100	100	100	100	100	100	100	100	100	100	100	100	100	100	100	100	100
Fossil fuels	100	100	100	100	100	100	100	100	97	100	100	100	100	100	100	100	100	100	95	100	100	100	100	100	100
Hydro prod	100	100	100	100	100	100	100	100	100	100	100	100	100	100	100	100	100	100	100	100	100	100	100	100	100
Other renew.	100	100	100	100	100	100	100	100	95	100	100	100	100	100	100	100	100	100	100	100	100	100	100	100	100
Non identifiable	100	100	100	100	100	100	100	100	100	100	100	100	100	100	100	100	100	100	100	100	100	100	100	100	100
Consumption	100	100	100	100	100	100	100	100	98	100	100	100	100	100	100	100	100	100	100	97	100	100	100	100	100



Exporting countries	AT	BA	BE	BG	CH	CZ	DE	DK_W	ES	FR	GR	HR	HU	IT	LU	ME	MK	NL	PL	PT	RO	RS	SI	SK	UA_W	Other III ¹	Sum export	
AT	-	-	-	-	611	19	627	-	-	-	-	-	186	70	-	-	-	-	-	-	-	-	284	-	-	-	1797	
BA	-	-	-	-	-	-	-	-	-	-	-	130	-	-	-	216	-	-	-	-	-	27	-	-	-	-	373	
BE	-	-	-	-	-	-	-	-	538	-	-	-	-	56	-	-	857	-	-	-	-	-	-	-	-	-	1451	
BG	-	-	-	-	-	-	-	-	-	-	300	-	-	-	-	245	-	-	-	-	1	95	-	-	-	0	641	
CH	3	-	-	-	-	-	210	-	-	493	-	-	-	1936	-	-	-	-	-	-	-	-	-	-	-	-	2642	
CZ	564	-	-	-	-	-	320	-	-	-	-	-	-	-	-	-	-	12	-	-	-	-	-	570	-	-	1466	
DE	969	-	-	-	664	63	-	184	-	40	-	-	-	406	-	-	184	411	-	-	-	-	-	-	-	332	3253	
DK_W	-	-	-	-	-	-	138	-	-	-	-	-	-	-	-	-	-	-	-	-	-	-	-	-	-	310	448	
ES	-	-	-	-	-	-	-	-	-	130	-	-	-	-	-	-	-	-	-	558	-	-	-	-	-	-	551	1239
FR	-	-	55	-	442	-	1288	-	284	-	-	-	-	674	-	-	-	-	-	-	-	-	-	-	-	-	620	3363
GR	-	-	-	0	-	-	-	-	-	-	-	-	-	161	-	0	-	-	-	-	-	-	-	-	-	130	291	
HR	-	123	-	-	-	-	-	-	-	-	-	-	0	-	-	-	-	-	-	-	-	0	121	-	-	-	244	
HU	5	-	-	-	-	-	-	-	-	-	-	101	-	-	-	-	-	-	-	-	26	98	0	21	-	-	251	
IT	0	-	-	-	23	-	-	-	50	4	-	-	-	-	-	-	-	-	-	-	-	12	-	-	-	-	89	
LU	-	-	181	-	-	-	62	-	-	-	-	-	-	-	-	-	-	-	-	-	-	-	-	-	-	-	243	
ME	-	5	-	-	-	-	-	-	-	-	-	-	-	-	-	-	-	-	-	-	-	14	-	-	-	71	90	
MK	-	-	-	0	-	-	-	-	-	-	-	355	-	-	-	-	-	-	-	-	-	-	0	-	-	-	355	
NL	-	-	291	-	-	-	636	-	-	-	-	-	-	-	-	-	-	-	-	-	-	-	-	-	-	82	1009	
PL	-	-	-	-	-	476	8	-	-	-	-	-	-	-	-	-	-	-	-	-	-	-	96	-	-	1	581	
PT	-	-	-	-	-	-	-	-	-	-	-	-	-	-	-	-	-	-	-	-	-	-	-	-	-	-	193	
RO	-	-	-	197	-	-	-	-	-	-	-	-	45	-	-	-	-	-	-	-	-	-	-	0	0	0	336	
RS	-	130	-	3	-	-	-	-	-	-	-	106	0	-	128	161	-	-	-	-	28	-	-	-	-	22	578	
SI	1	-	-	-	-	-	-	-	-	-	506	99	-	-	-	-	-	-	-	-	-	-	-	-	-	-	606	
SK	-	-	-	-	-	3	-	-	-	-	-	-	374	-	-	-	-	-	-	-	-	-	-	-	144	-	523	
UA_W	-	-	-	-	-	-	-	-	-	-	-	-	197	-	-	-	-	-	-	-	-	103	-	5	-	-	305	
Other III ¹	-	-	-	0	-	-	108	508	0	167	0	-	-	-	-	0	-	297	154	-	12	4	-	-	-	-	1250	
Sum imp	1542	258	527	200	1740	561	3397	692	477	1418	659	843	802	2940	462	344	406	1338	579	558	170	332	417	671	165	2119	23617	

Sum of physical energy flows between UCTE countries = 19778GWh Total physical energy flows = 23617GWh

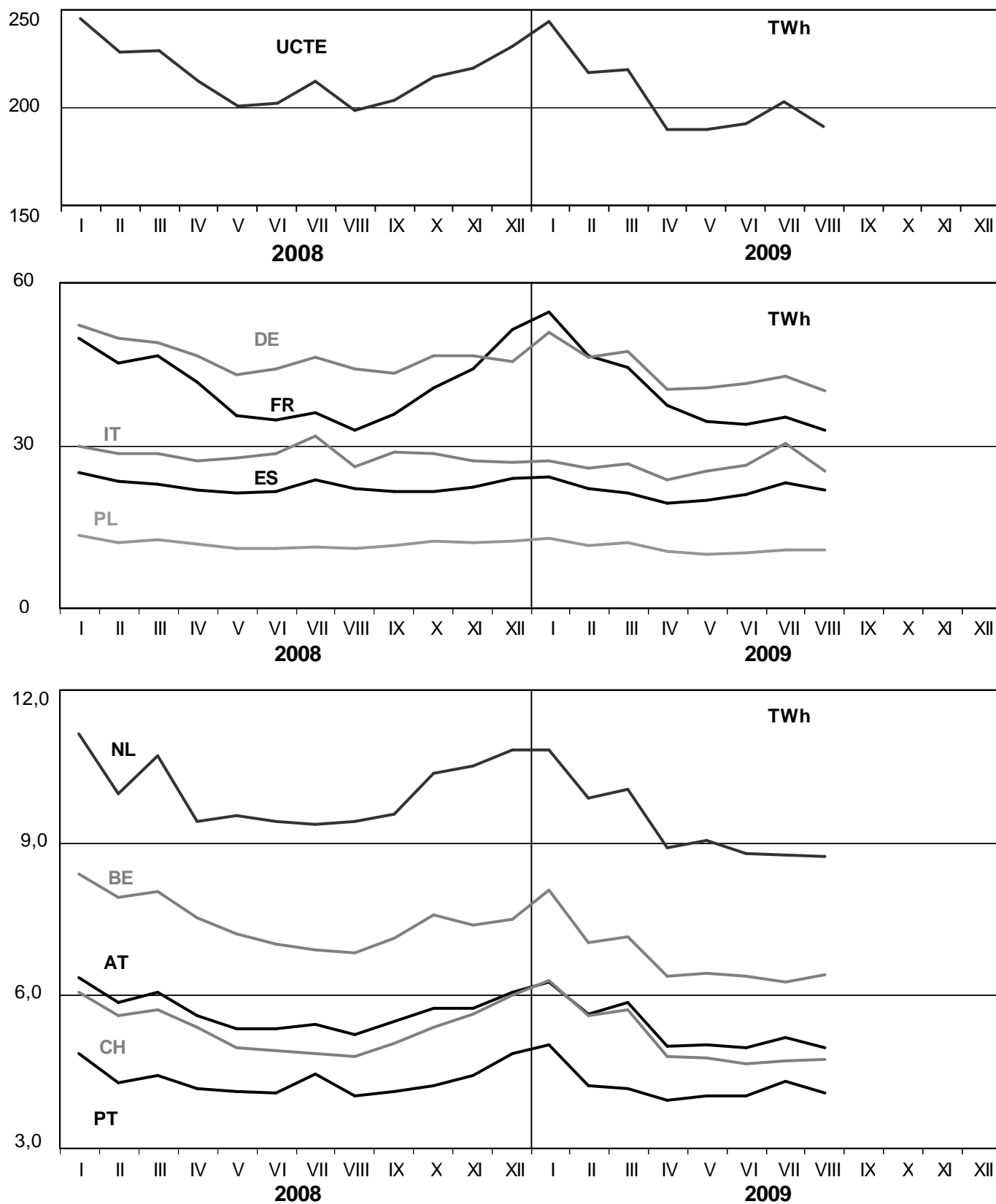
¹ Other III: Albania, Belarus, Denmark East, Great Britain, Morocco, Republic of Moldavia, Norway, Sweden, Republic of Turkey and Ukraine

These physical energy flows were measured on the cross-frontier transmission lines (≤ 110 kV) listed in table 9 of the Statistical Yearbook. These values may differ from the official statistics and the exchange balances in chapter 1.

3

Monthly consumption

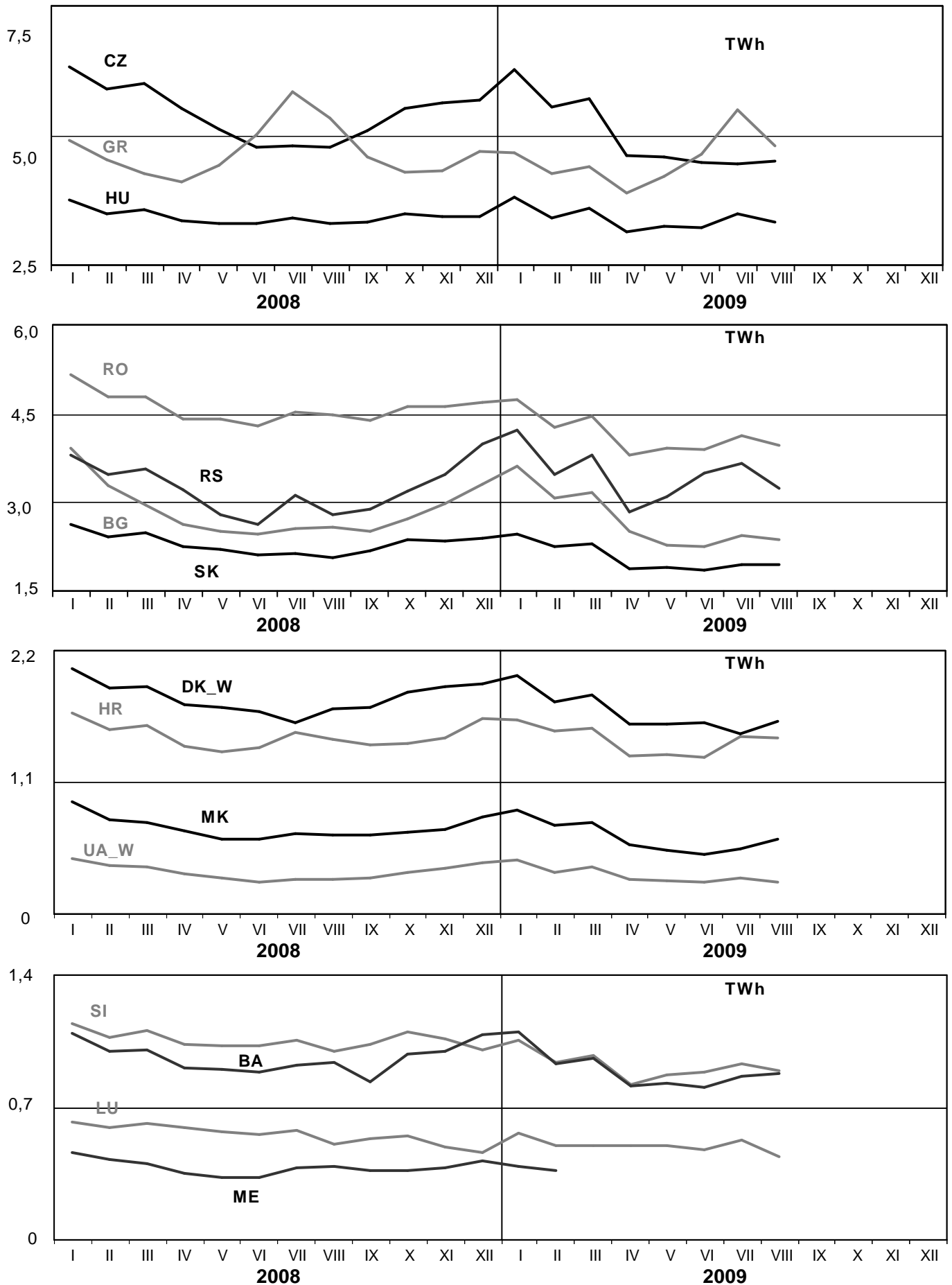
August 2009



3

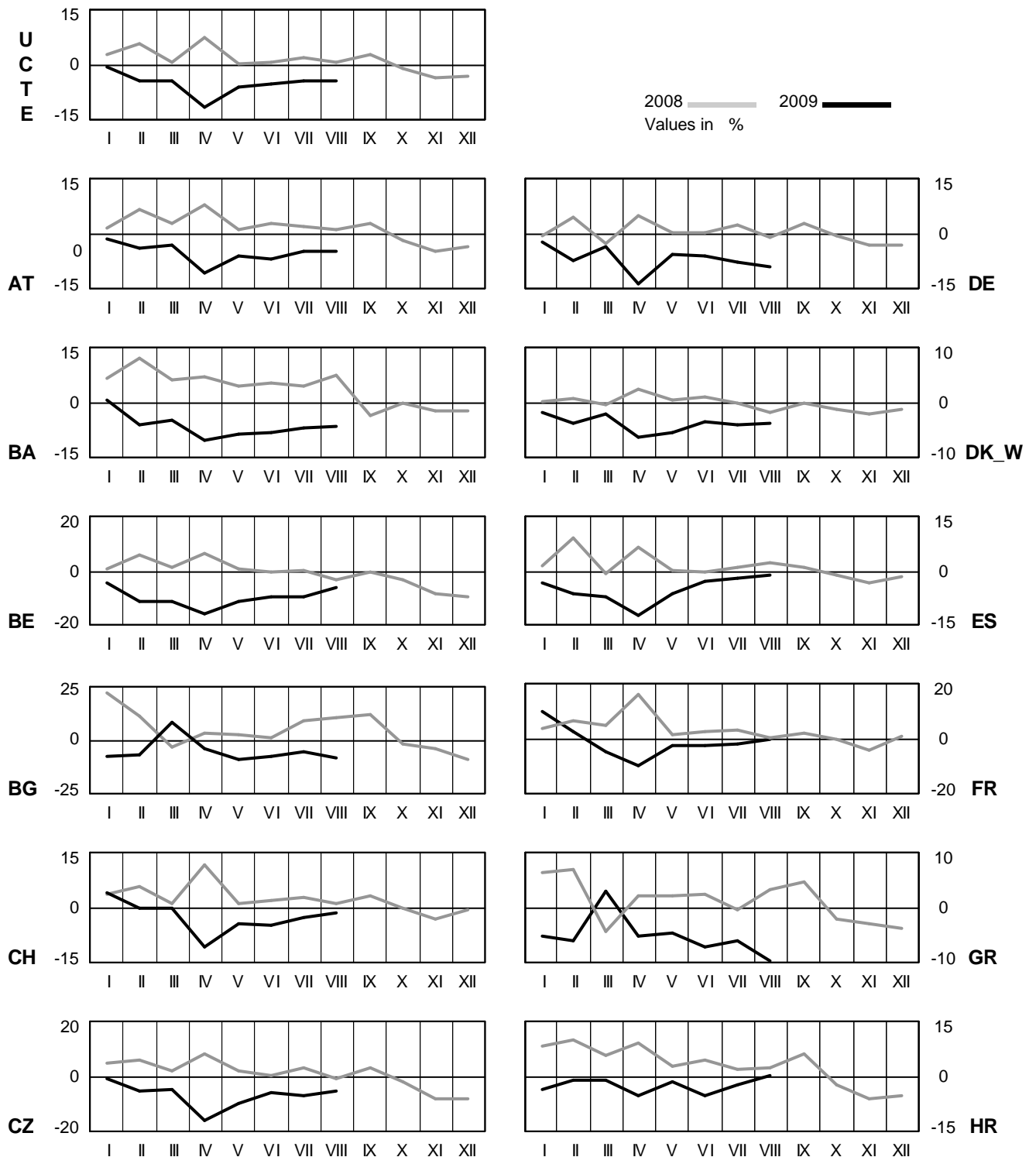
Monthly consumption

August 2009



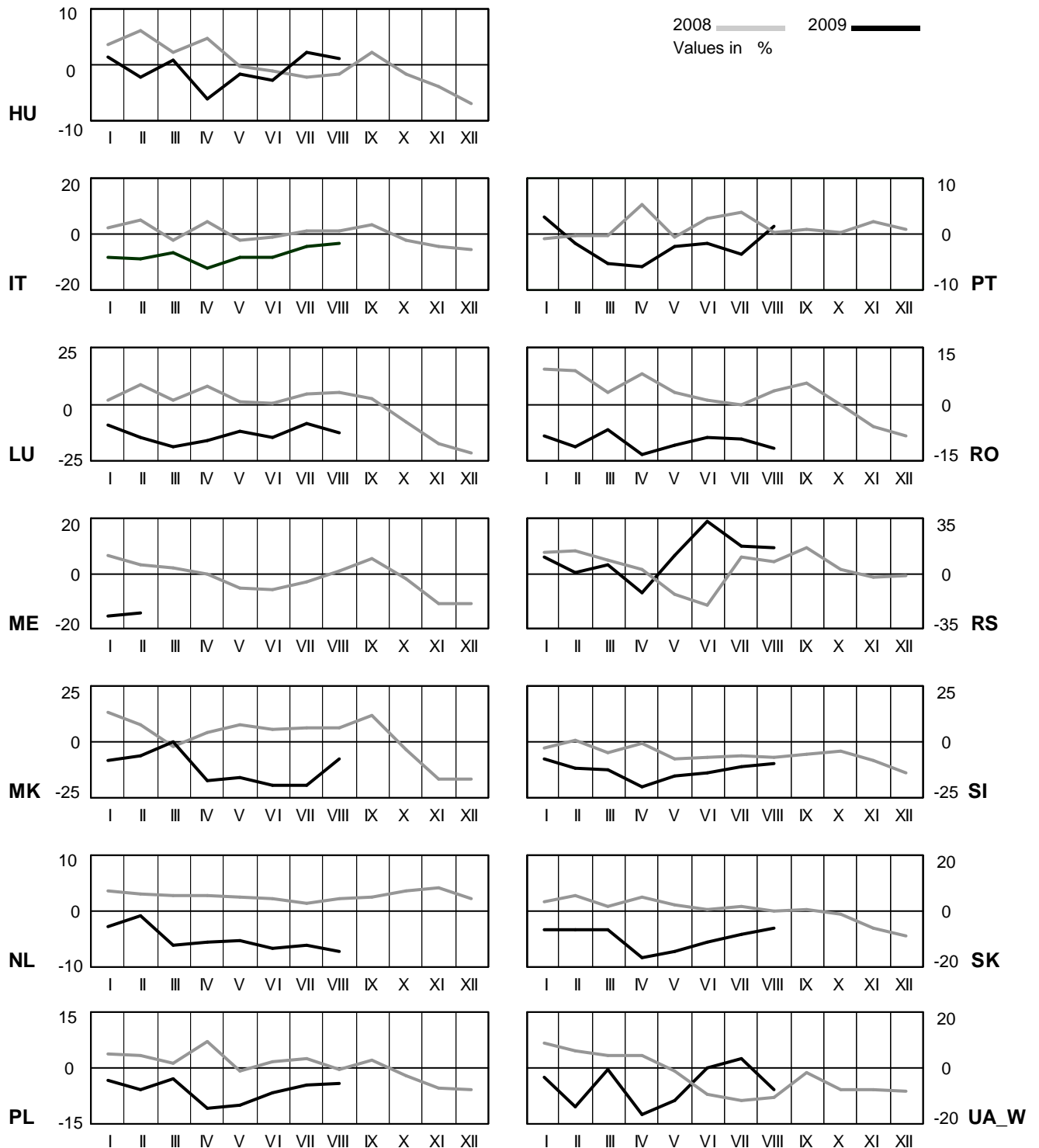
4 Monthly consumption variation

August 2009



4 Monthly consumption variation

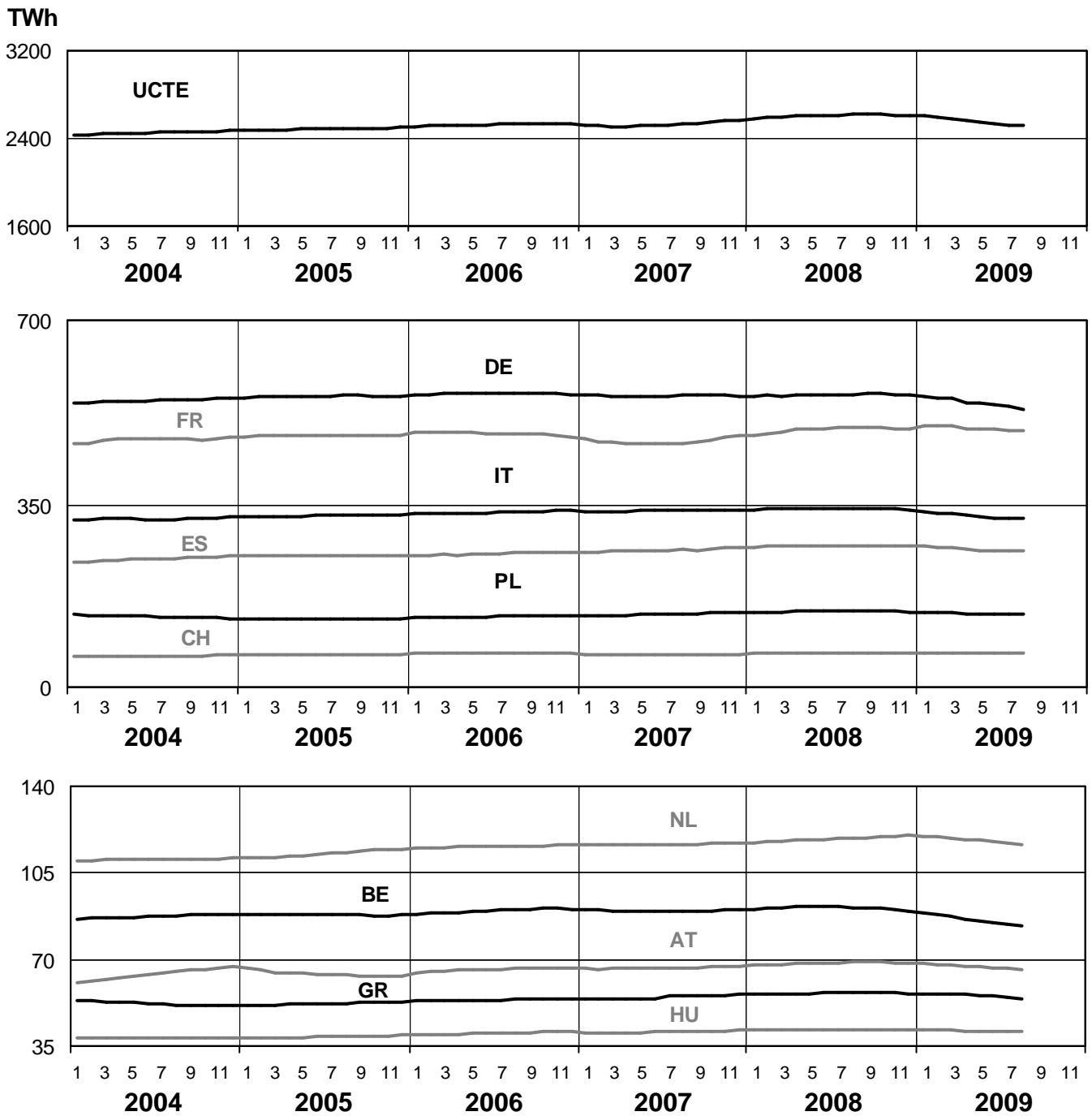
August 2009



5

Consumption of the last 12 months

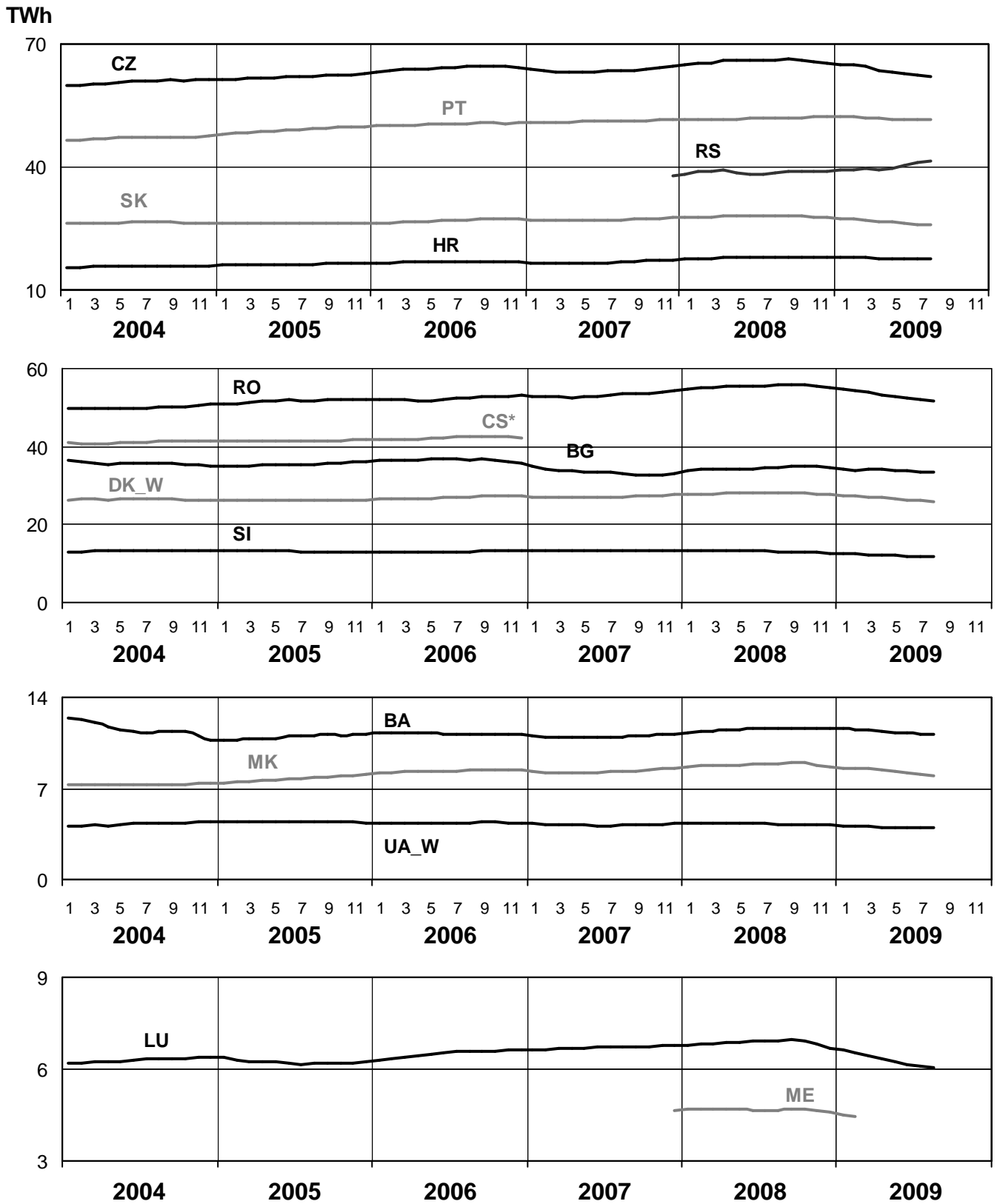
August 2009



5

Consumption of the last 12 months

August 2009

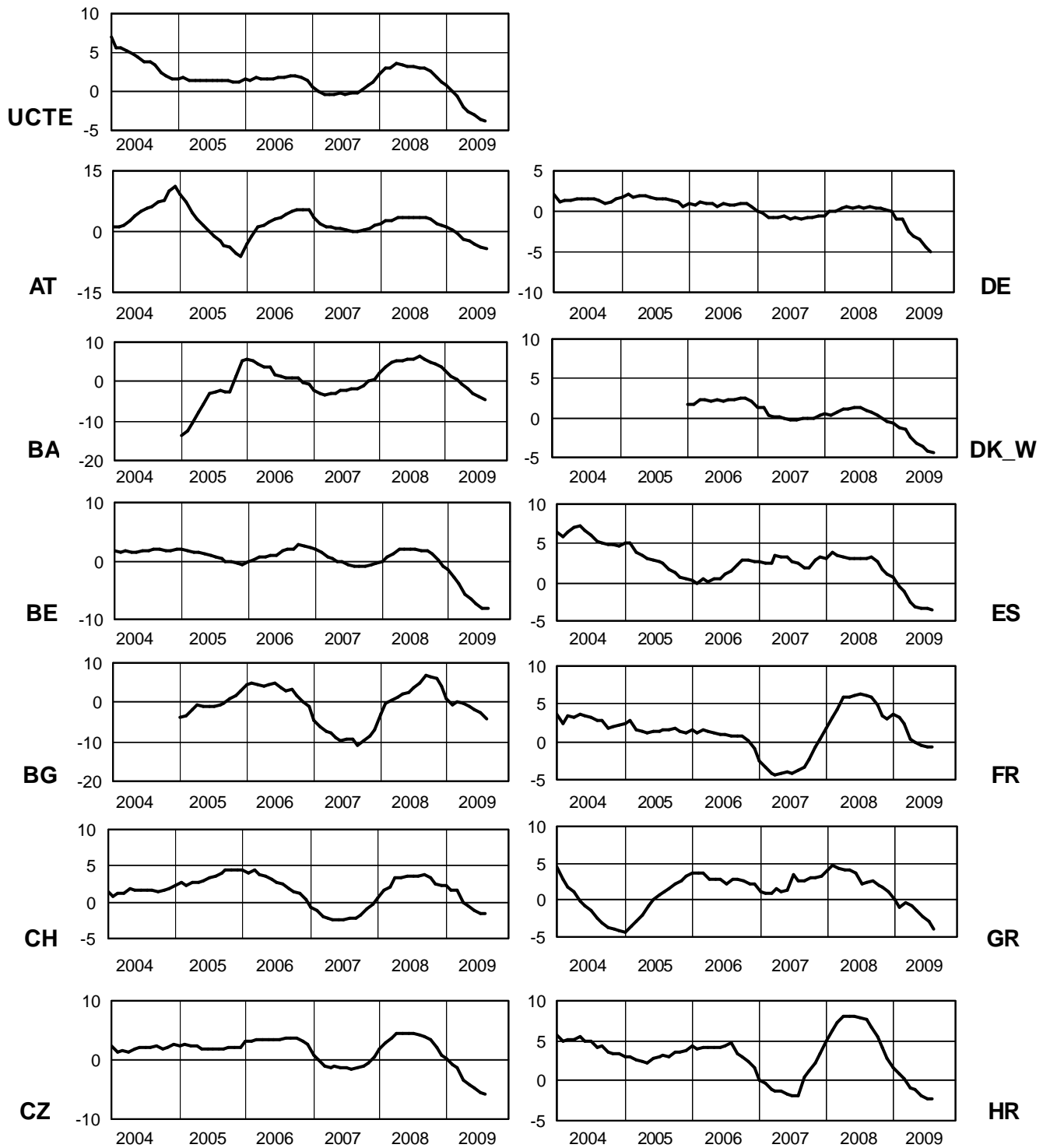


* CS consumption values until December 2006; from 2007 on ME and RS as separate countries

6

Variation of the last 12 months' consumption in %

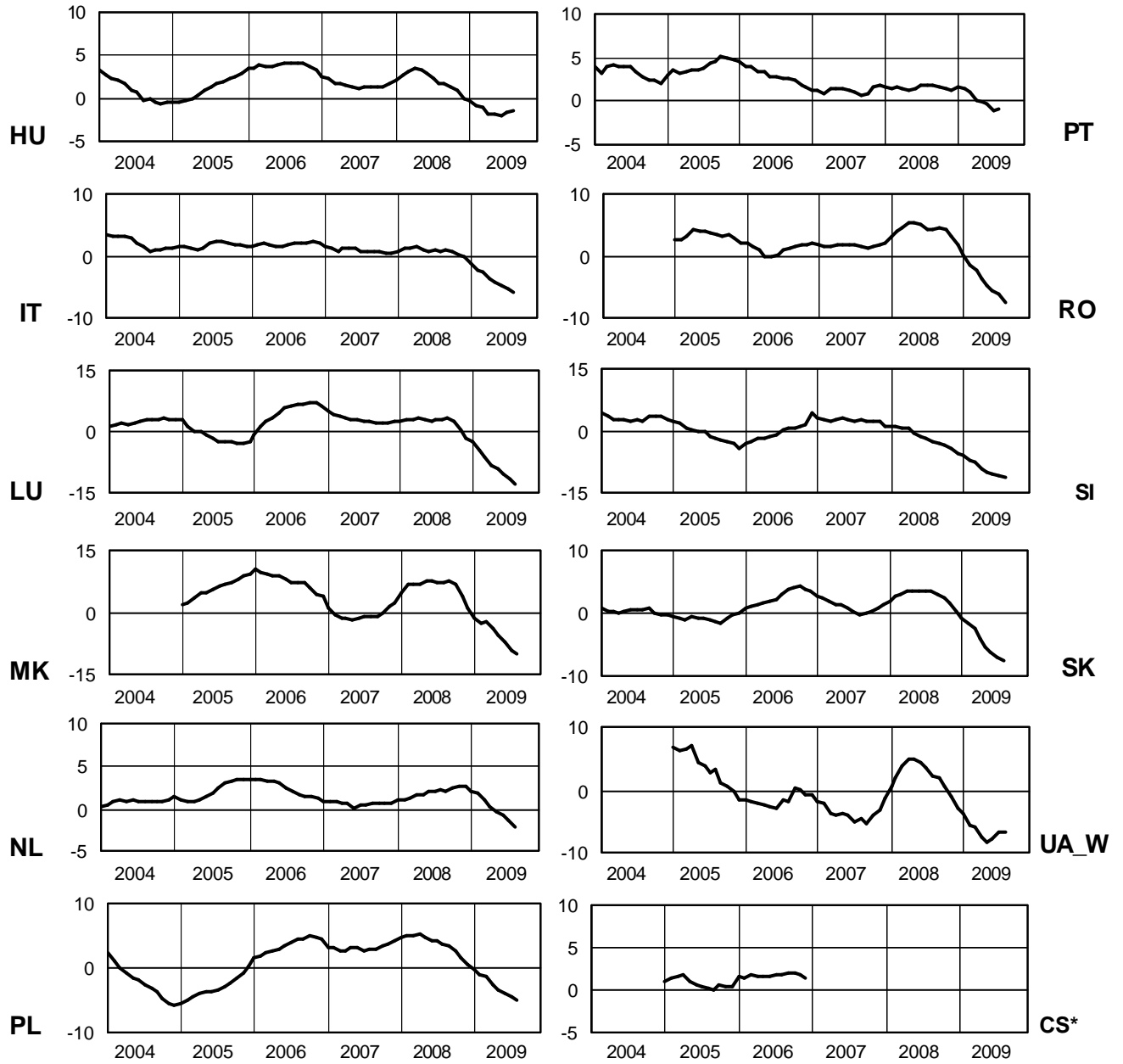
August 2009



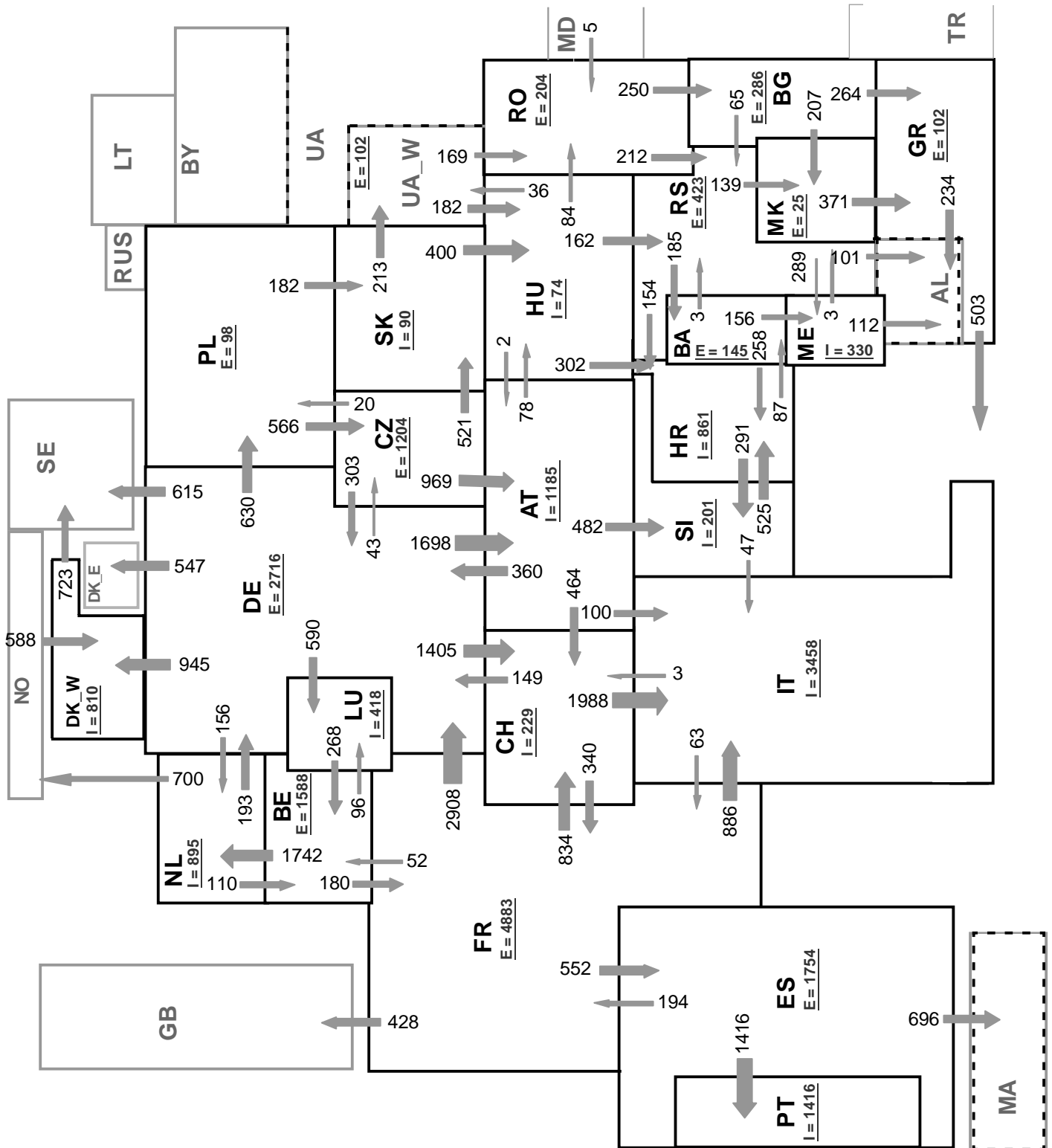
6

Variation of the last 12 months' consumption in %

August 2009



* CS consumption values of the last 12 months until December 2006; variation ME and RS will be published from the third quarter 2009 on



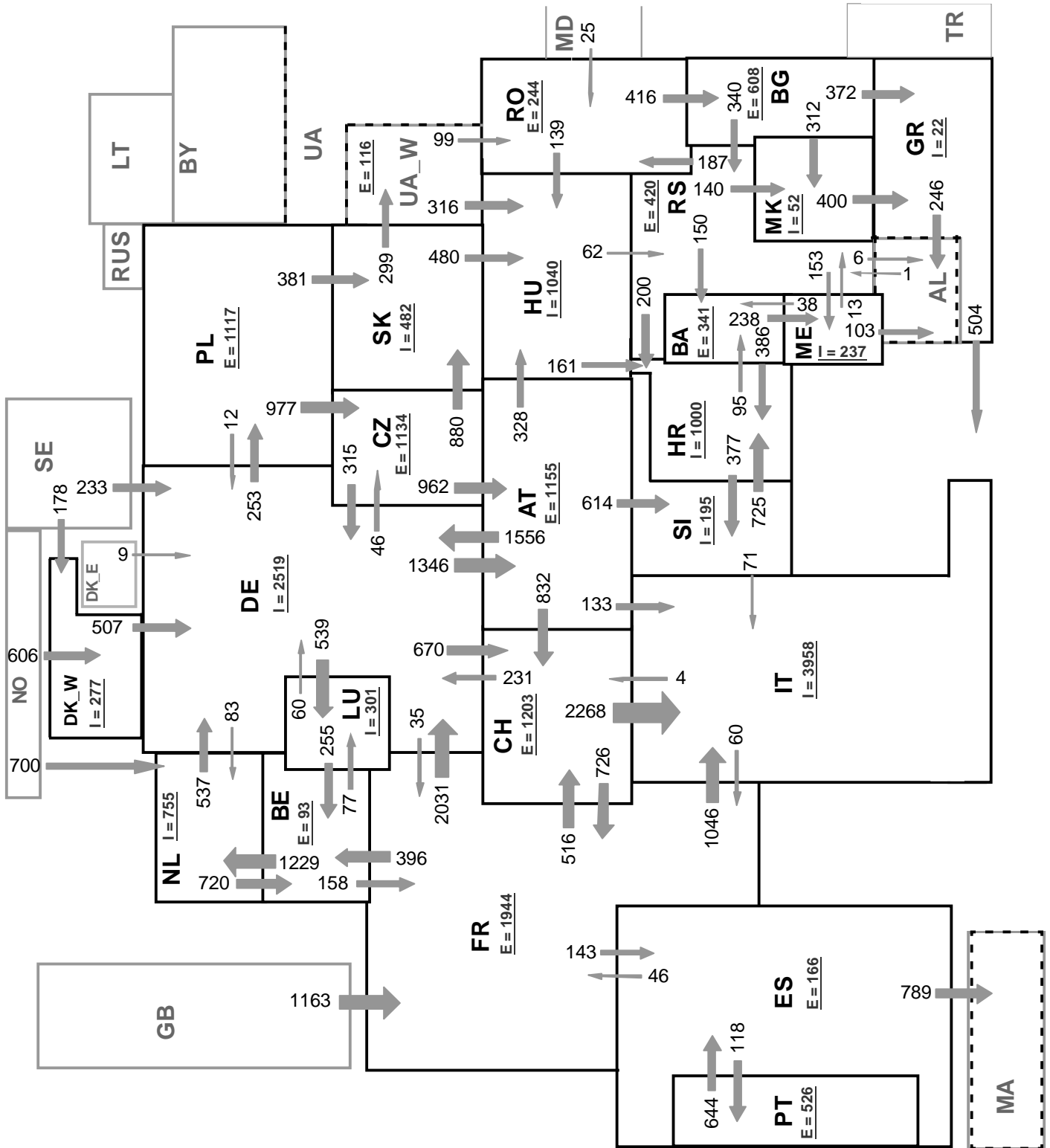
Sum of load flows in MW

UCTE = 26445 MW

Total = 31794 MW

Synchronous operation with UCTE region

I = Import balance
E = Export balance



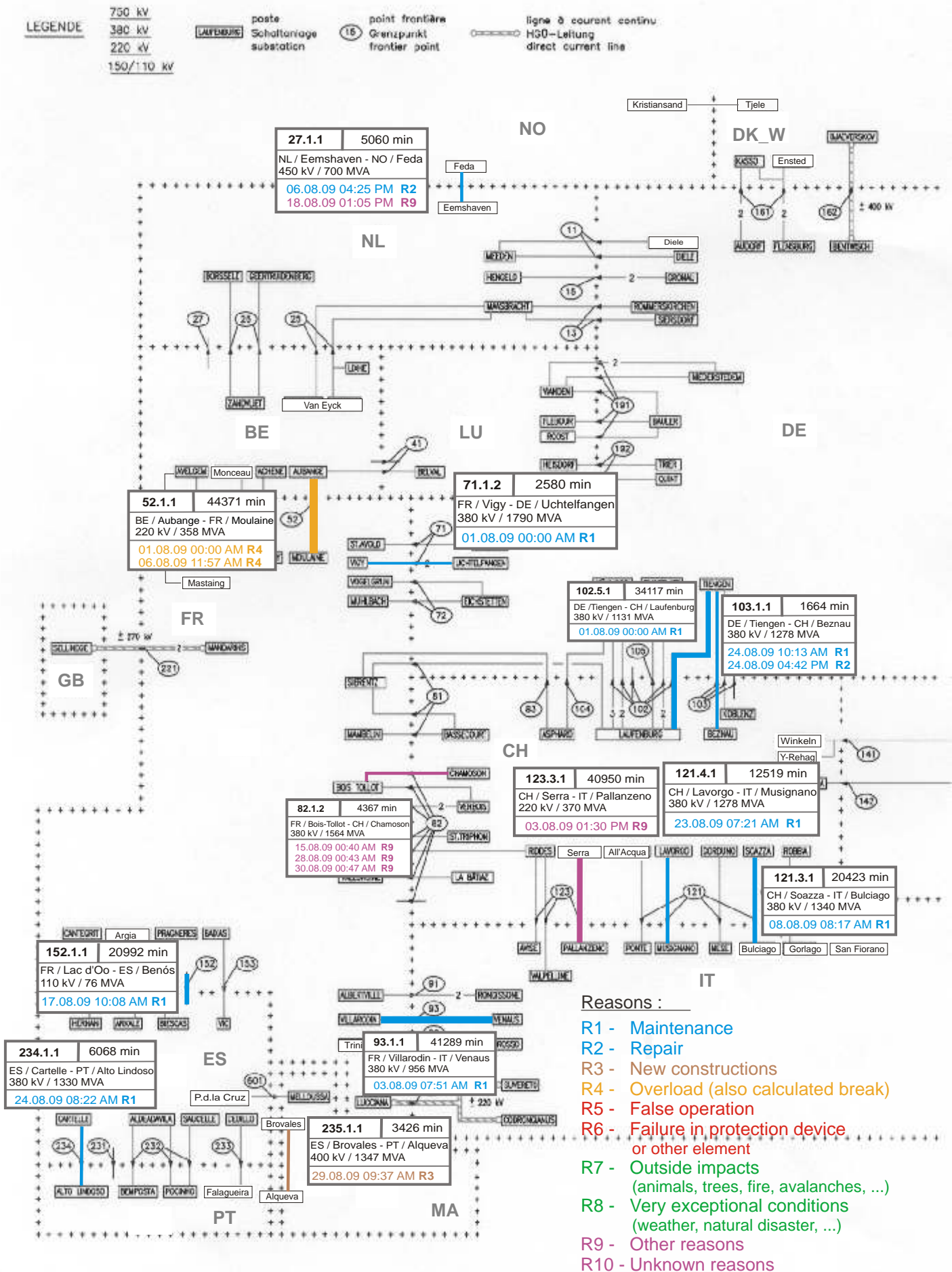
Sum of load flows in MW

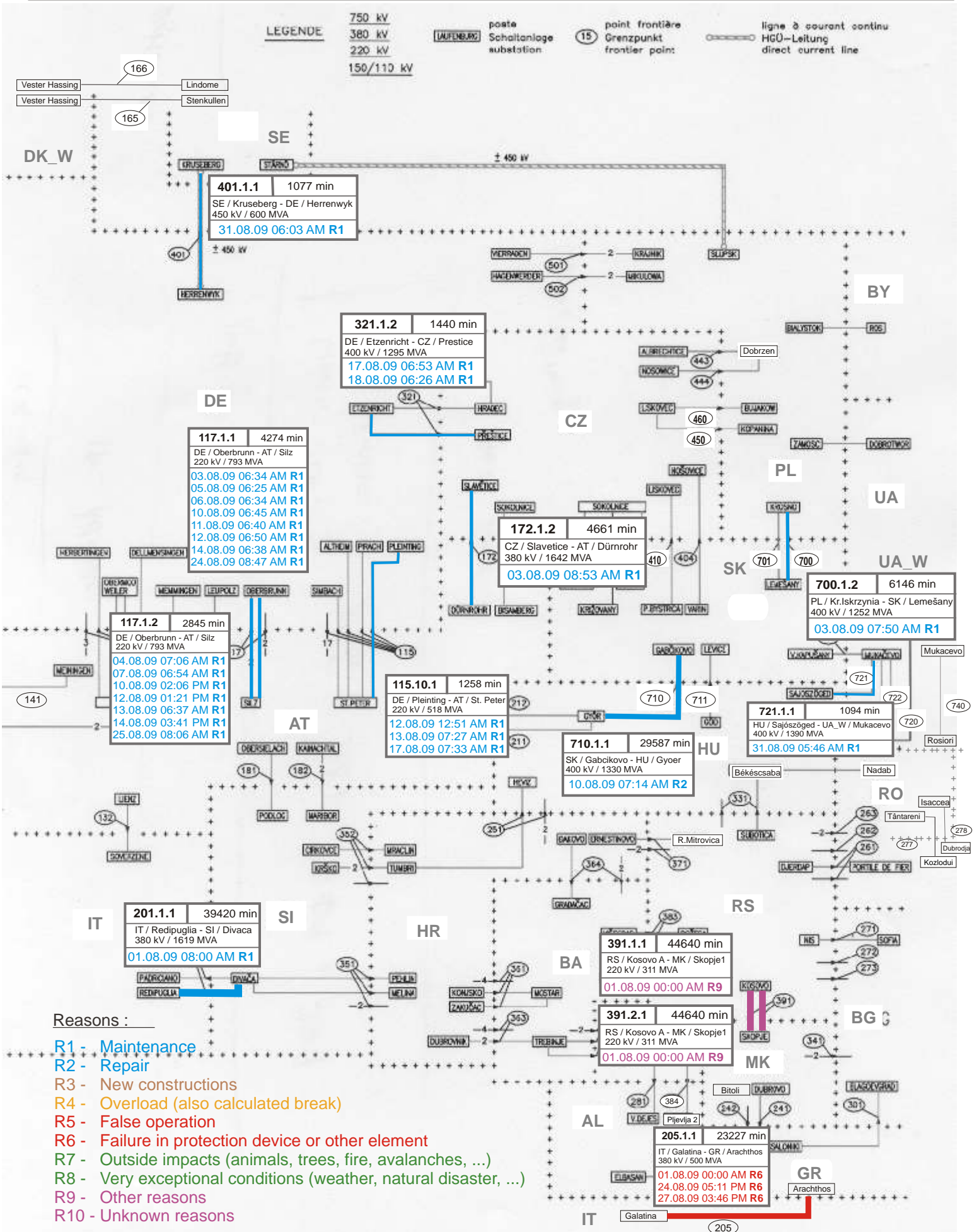
UCTE = 27693 MW

Total = 32466 MW

Synchronous operation with UCTE region

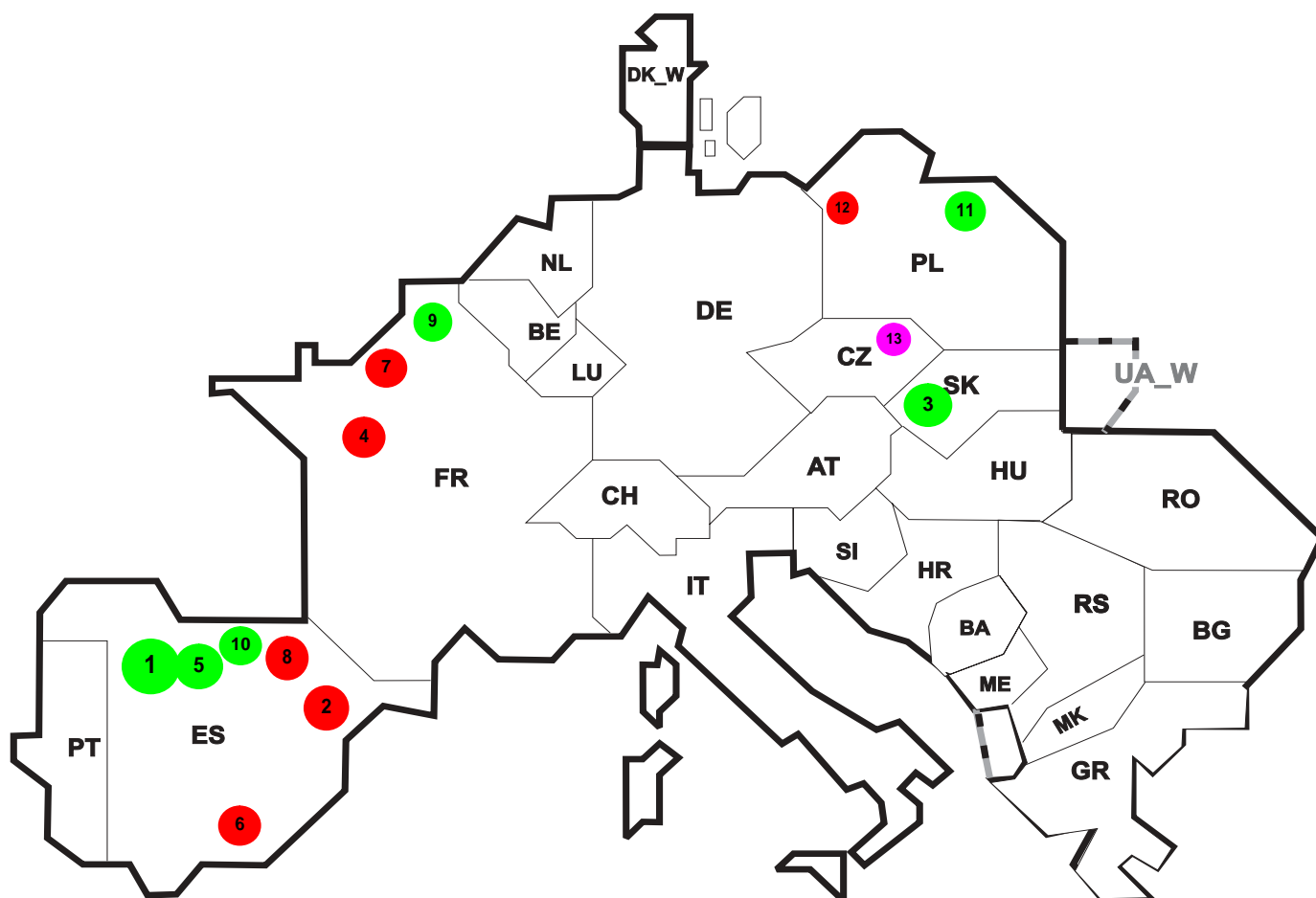
I = Import balance
E = Export balance





Reasons :

- R1 - Maintenance
- R2 - Repair
- R3 - New constructions
- R4 - Overload (also calculated break)
- R5 - False operation
- R6 - Failure in protection device or other element
- R7 - Outside impacts (animals, trees, fire, avalanches, ...)
- R8 - Very exceptional conditions (weather, natural disaster, ...)
- R9 - Other reasons
- R10 - Unknown reasons



Reasons:

R4 Overload (also calculated break)

R5 False operation

R6 Failure in protection device or other element

R7 Outside impacts (animals, trees, fire, avalanches, ...)

R8 Very exceptional conditions (weather, natural disaster, ...)

R9 Other reasons

R10 Unknown reasons

No	Country	Substation	Reason	Energy not supplied ² [MWh]	Total loss of power [MW]	Restoration time [min]	Equivalent time of interruption ¹
1	ES	Palencia	R7	24	3130	53	0,048
2	ES	Castellet	R5	14	51	3070	0,029
3	SK	Sucany	R7	1	12	2	0,020
4	FR	Distre Y643	R6	18	30	37	0,020
5	ES	Palencia	R7	3	3570	5	0,006
6	ES	Fortuna	R6	2	2970	354	0,004
7	FR	Port Jérôme	R6	2	18	7	0,002
8	ES	Ayala	R5	1	250	27	0,002
9	FR	Amiens	R7	1	5	7	0
10	ES	Babcock	R7	0	60	30	0
11	PL	Młosna	R7	0	180	0	0
12	PL	Krajnik	R6	0	188	0	0
13	CZ	Krasikov	R10	0	200	118	0

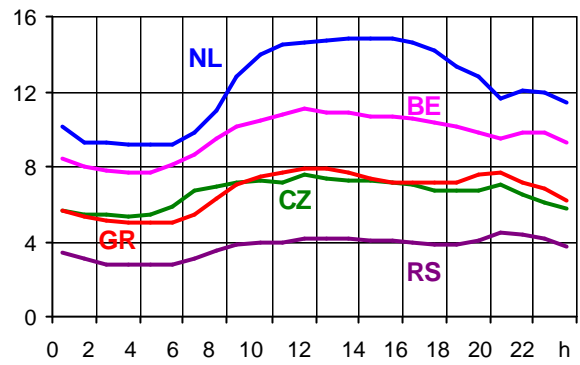
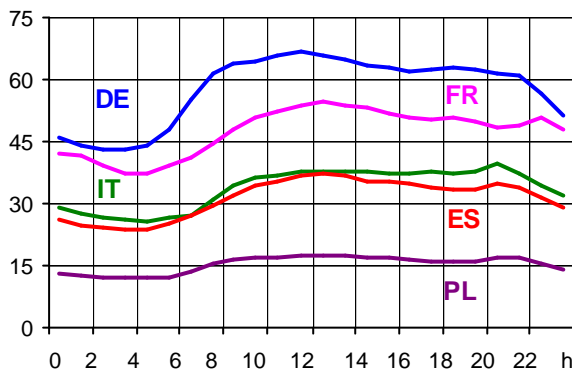
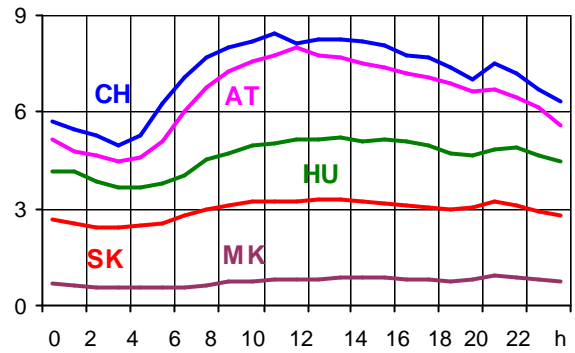
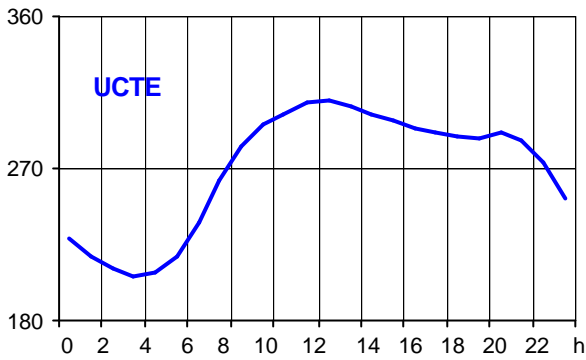
¹ (year [in min] * energy not supplied) / consumption last 12 months

Control area	Export Programs	Import Programs	Export Programs at 03:00	Import Programs at 03:00	Export Programs at 11:00	Import Programs at 11:00
AT	718206	771678	937	817	1366	1284
BA	479455	363993	82	100	190	100
BE	1064431	22304	1750	0	631	364
BG	n.a.	n.a.	n.a.	n.a.	n.a.	n.a.
CH	2270717	1376876	2532	2750	2823	1582
CZ	1747025	818111	2461	1215	2828	1666
DE	1809252	2430655	2022	2478	1397	2711
DK_W	695934	522134	630	1538	1585	0
ES	1296726	519403	2190	400	1080	788
FR	5165318	3185215	6577	1636	7059	5094
GR	181143	545885	666	614	666	688
HR	55125	653176	0	818	0	997
HU	638439	1190282	1177	1234	745	1776
IT	89161	2940298	66	3535	64	4019
ME	n.a.	n.a.	n.a.	n.a.	n.a.	n.a.
MK	80500	132300	0	245	0	405
NL	1166457	1516239	1634	2546	1301	2081
PL	208822	272186	0	0	994	0
PT	93321	474088	0	1445	488	0
RO	196715	29436	222	26	284	41
RS	769936	475173	1013	612	1196	628
SI	607338	420216	654	846	715	895
SK	516158	621478	527	575	660	1068
UA_W	159897	23819	103	0	120	0

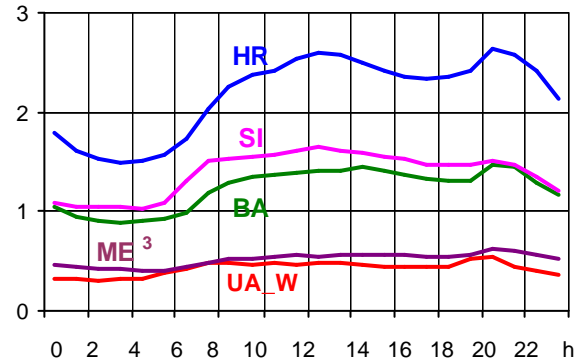
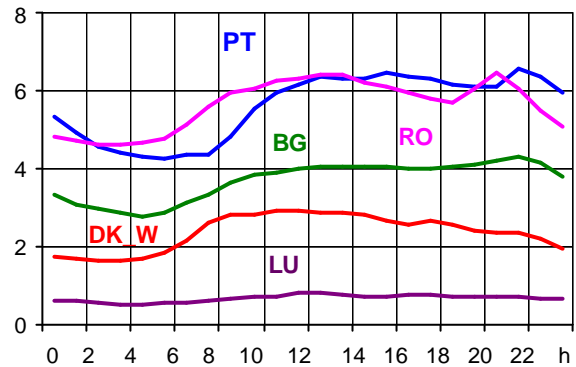
- Control areas can differ from national borders (i.e. German block which includes parts of AT, LU and DK).
- Values are calculated on an hourly base (MWh).
- This values are not the provisional values entered in the VULCANUS system, but the definitive values after an eventual correction during the actual date.
- Export Programs: Sum of all positive values of every hour of every border
- Import Programs: Sum of all negative values of every hour of every border
- Export Programs at 03:00: Sum of all positive values the third Wednesday from 02:00 to 03:00 a.m.
- Import Programs at 03:00: Sum of all negative values the third Wednesday from 02:00 to 03:00 a.m.
- Export Programs at 11:00: Sum of all positive values the third Wednesday from 10:00 to 11:00 a.m.
- Import Programs at 11:00: Sum of all negative values the third Wednesday from 10:00 to 11:00 a.m.

Consumption hourly load curves on 19.08.2009 CET

Values in GW



	Highest load MW	var.% ¹	Load representativity %
AT	7983	-1,5	100
BA	1478	-7,5	100
BE ²	11075	-3,5	100
BG	4318	-8,3	99
CH	8439	-2,7	100
CZ	7539	-3,6	100
DE	66775	-10,0	91
DK_W	2915	-7,7	100
ES	37171	8,7	98
FR	54652	3,8	100
GR	7915	-10,7	100
HR	2644	3,6	100
HU	5211	17,8	100
IT	39465	1,4	100
LU	824	-10,4	100
ME ³	617	n.a.	100
MK	902	-17,3	100
NL	14869	-5,9	100
PL ⁴	17493	-4,5	100
PT	6559	2,7	97
RO	6470	-8,0	100
RS	4514	-2,1	100
SI	1644	-6,4	100
SK	3281	-4,3	100
UCTE	309793	-2,2	
UA_W	539	-14,2	100



¹ Variation as compared to corresponding month of the previous year

² The reported figures are best estimates based on actual measurements and extrapolations.

³ Highest load value as of August 2008

⁴ Operational data

Contact

Avenue de Cortenbergh, 100
B-1000 Brussels – Belgium
Tel + 32 2 741 0950
Fax + 32 2 741 0951

info@entsoe.eu
www.entsoe.eu

