

UCTE



August 2005

Monthly provisional values
union for the co-ordination of transmission of electricity

Table of contents ¹		Page
1	Electricity supply situation of the countries	2
2	Physical energy flows	3
3	Monthly consumption	4
4	Monthly consumption variation	6
5	Consumption of the last 12 months	8
6	Variation of the last 12 months' consumption	9
7	Load flows (night)	10
8	Load flows (day)	11
9	Unavailability of international tie lines (major events)	12
10	Network reliability (major events)	14
11	Scheduled exchanges	15
12	Load on the 3 rd Wednesday	16

¹ Monthly provisional values from the UCTE database as of 30 November 2005

All values are calculated to represent 100% of the national values

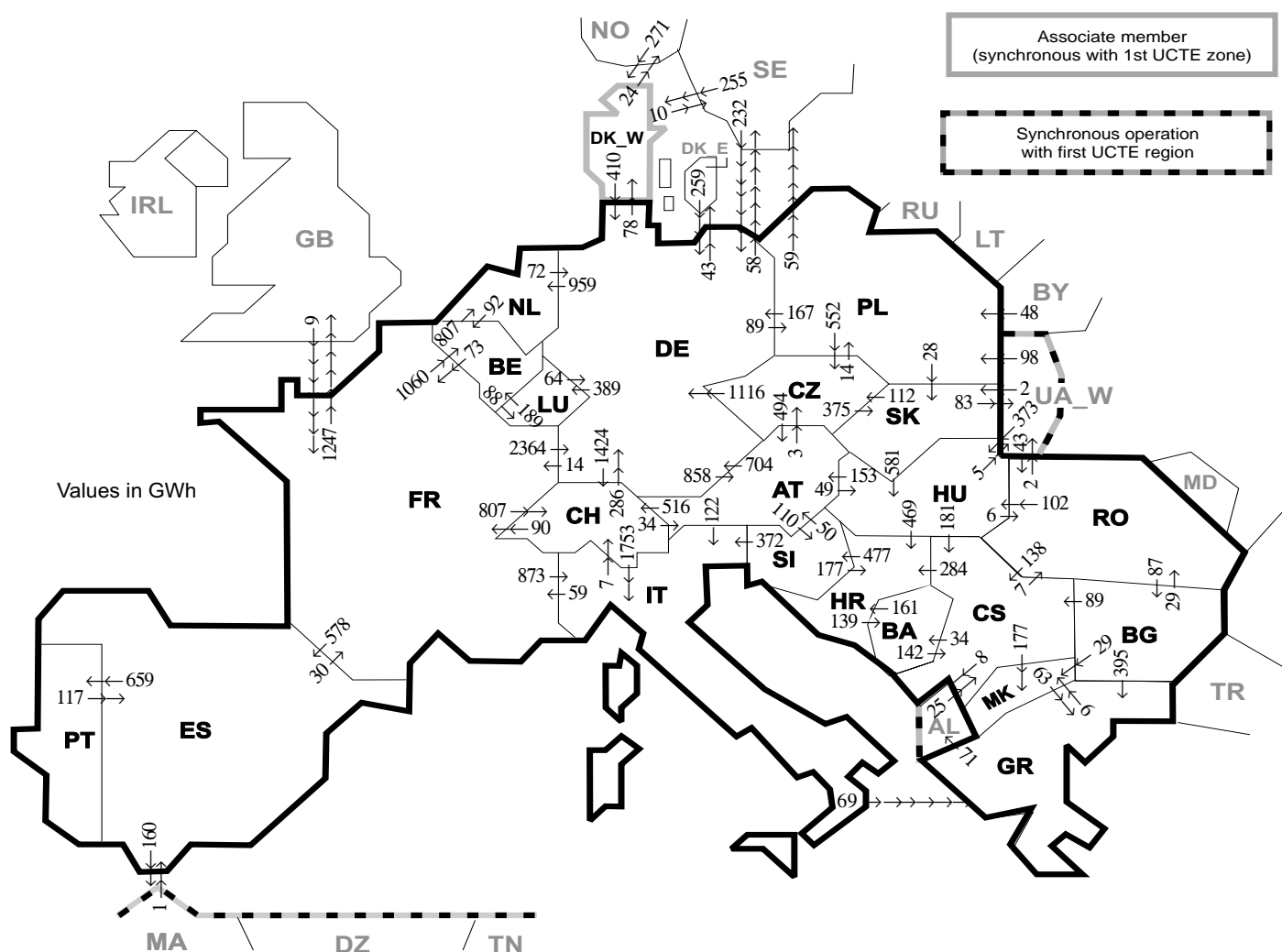
Countries	Net production in GWh							Exchange balance in GWh	Pump in GWh	Consumption in GWh			
	Therm. nuclear	Fossil fuel	Hydro prod	Other renew.	Of which wind	Not identify	Total			monthly	var. [%]	last 12 months	var. [%]
AT	0	1046	3571	0	0	516	5133 ¹	53	340	4846	-2,8	63669	-2,2
BA	0	636	355	0	0	0	991	-135	0	856	5,5	11085	-2,4
BE	3443	2634	122	166	8	0	6365 ¹	372	149	6588	-2,4	87726	0,0
BG	1146	1655	336	0	0	0	3137	-460	48	2629	4,0	35455	-0,6
CH	1051	176	3135	75	0	0	4437 ¹	603	319	4721	4,7	62133	3,7
CS	0	1939	929	0	0	0	2868 ¹	57	109	2816	1,0	41340	0,2
CZ	1720	3875	283	3	1	0	5881 ¹	-1332	83	4466	2,8	62163	1,9
DE	11848	25710	2111	2398	1519	0	42067 ¹	1762	819	43010	1,8	557287	1,6
ES	4548	10047	1751	1873	1850	0	18219 ¹	-184	471	17564	-13,2	250782	1,4
FR	33144	1820	3734	266	40	0	38964	-6773	450	31741	-0,1	479298	1,2
GR	0	3909	456	74	66	0	4439 ¹	448	74	4813	1,8	52320	1,2
HR	0	451	381	2	1	0	834 ¹	469	20	1283	2,7	16288	3,1
HU	1287	1466	18	0	0	0	2771 ¹	291	0	3062	1,6	38493	0,9
IT	0	18509	3171	598	181	0	22278 ¹	2985	604	24659	2,3	327894	2,0
LU	0	231	67	8	3	0	306	225	90	440	0,5	6180	-2,3
MK	0	340	59	0	0	0	399 ¹	148	0	547	7,0	7822	6,7
NL	326	6779	0	442	119	0	7547 ¹	1602	0	9149	5,7	113341	2,5
PL	0	10414	320	0	0	0	10734 ¹	-557	197	9980	0,6	129555	-3,1
PT	0	2788	237	274	118	0	3299 ¹	559	31	3826	5,5	49022	3,7
RO	289	1889	2009	0	0	0	4187 ¹	-244	0	3943	1,6	51761	3,5
SI	443	229	343	0	0	0	1015	-15	0	1000	-3,7	13013	-1,9
SK	1360	231	512	0	0	195	2298 ¹	-370	16	1912	-1,6	26181	-1,2
UCTE	60605	96774	23900	6179	3906	711	188169¹	-496	3820	183851	-0,1	2482808	1,2
DK_W	0	1107	1	440	330	0	1548 ¹	160	0	1708	-0,3	21224	n.a.
UA_W ²	0	594	9	0	0	0	603 ¹	-329	0	274	5,8	4455	3,3

¹ Including deliveries from industry

² UA_W represents the so-called Burshtyn Island synchronously interconnected with UCTE

All representativities of the national production and consumption values used to calculate values at a representativity of 100% as stated in the table above

Countries	AT	BA	BE	BG	CH	CS	CZ	DE	ES	FR	GR	HR	HU	IT	LU	MK	NL	PL	PT	RO	SI	SK	DK_W	UA_W ²
Production																								
Therm.nuclear	100	100	100	100	100	100	100	100	100	100	100	100	100	100	100	100	100	100	100	100	100	100	100	100
Fossil fuel	100	100	100	100	100	100	100	100	100	100	100	100	100	100	98	100	100	100	96	100	100	100	100	100
Hydro prod	100	100	100	100	100	100	100	100	100	100	100	100	100	100	99	100	100	100	100	100	100	100	100	100
Other renew.	n.a.	100	100	100	100	100	100	100	100	100	100	100	n.a.	100	99	100	100	n.a.	100	100	100	100	100	100
Not identify	n.a.	100	100	100	100	100	100	100	100	100	100	100	n.a.	100	n.a.	100	100	n.a.	100	100	100	100	100	100
Consumption	100	100	100	100	100	100	100	100	98	100	100	100	100	100	99	100	100	100	97	100	95	100	100	100



Exporting countries	Importing countries																			Sum export							
	AT	BA	BE	BG	CH	CS	CZ	DE	ES	FR	GR	HR	HU	IT	LU	MK	NL	PL	PT		RO	SI	SK	DK_W	UA_W ²	Other III ¹	
AT	-	-	-	-	516	-	3	704	-	-	-	-	49	122	-	-	-	-	-	-	110	-	-	-	-	-	1504
BA	-	-	-	-	-	142	-	-	-	-	-	161	-	-	-	-	-	-	-	-	-	-	-	-	-	-	303
BE	-	-	-	-	-	-	-	-	-	73	-	-	-	-	88	-	807	-	-	-	-	-	-	-	-	-	968
BG	-	-	-	-	-	89	-	-	-	-	395	-	-	-	-	29	-	-	-	-	29	-	-	-	-	0	542
CH	34	-	-	-	-	-	-	286	-	90	-	-	1753	-	-	-	-	-	-	-	-	-	-	-	-	2163	
CS	-	34	-	0	-	-	-	-	-	-	-	284	0	-	-	177	-	-	-	7	-	-	-	-	-	8	510
CZ	494	-	-	-	-	-	-	1116	-	-	-	-	-	-	-	-	-	14	-	-	-	375	-	-	-	1999	
DE	858	-	-	-	1424	-	0	-	-	14	-	-	-	-	389	-	959	89	-	-	78	-	-	101	-	3912	
ES	-	-	-	-	-	-	-	-	-	30	-	-	-	-	-	-	-	-	659	-	-	-	-	-	160	849	
FR	-	-	1060	-	807	-	-	2364	578	-	-	-	-	873	-	-	-	-	-	-	-	-	-	-	1247	6929	
GR	-	-	-	0	-	-	-	-	-	-	-	-	0	0	6	-	-	-	-	-	-	-	-	-	-	71	77
HR	-	139	-	-	-	0	-	-	-	-	-	-	0	-	-	-	-	-	-	-	477	-	-	-	-	616	
HU	153	-	-	-	-	181	-	-	-	-	-	469	-	-	-	-	-	-	-	6	0	-	5	-	-	814	
IT	0	-	-	-	7	-	-	-	-	59	69	-	-	-	-	-	-	-	-	-	0	-	-	-	-	135	
LU	-	-	189	-	-	-	-	64	-	-	-	-	-	-	-	-	-	-	-	-	-	-	-	-	-	253	
MK	-	-	-	0	-	0	-	-	-	-	63	-	-	-	-	-	-	-	-	-	-	-	-	-	-	63	
NL	-	-	92	-	-	-	-	72	-	-	-	-	-	-	-	-	-	-	-	-	-	-	-	-	-	164	
PL	-	-	-	-	-	-	552	167	-	-	-	-	-	-	-	-	-	-	-	-	28	-	0	59	-	806	
PT	-	-	-	-	-	-	-	-	117	-	-	-	-	-	-	-	-	-	-	-	-	-	-	-	-	117	
RO	-	-	-	87	-	138	-	-	-	-	-	-	102	-	-	-	-	-	-	-	-	-	-	2	0	329	
SI	50	-	-	-	-	-	-	-	-	-	-	177	372	-	-	-	-	-	-	-	-	-	-	-	-	599	
SK	-	-	-	-	-	-	112	-	-	-	-	-	581	-	-	-	-	0	-	-	-	-	-	83	-	776	
DK_W	-	-	-	-	-	-	410	-	-	-	-	-	-	-	-	-	-	-	-	-	-	-	-	34	-	444	
UA_W ²	-	-	-	-	-	-	-	-	-	-	-	-	373	-	-	-	-	98	-	43	2	-	-	-	-	516	
Other III ¹	-	-	-	0	25	-	491	1	9	0	-	-	-	-	-	-	-	48	-	0	-	526	-	-	-	1100	
Sum imp	1589	173	1341	87	2754	575	667	5674	696	275	527	1091	1105	3120	477	212	1766	249	659	85	587	405	604	90	1680	26488	

Sum of physical energy flows between UCTE countries = 22614GWh

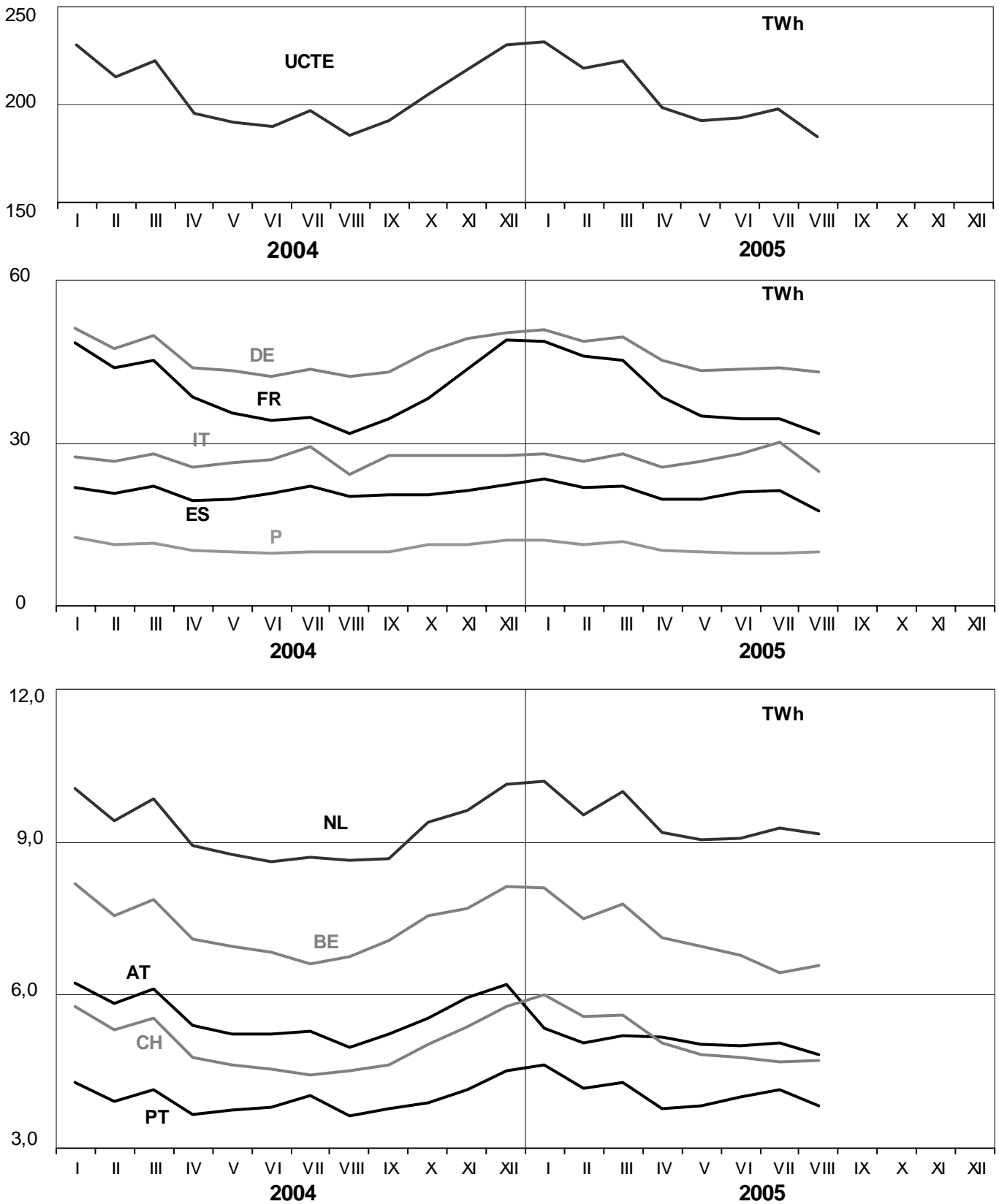
Total physical energy flows = 26488GWh

¹ Other III: Albania, Belarus, Denmark East, Great Britain, Morocco, Republic of Moldavia, Norway, Sweden and Republic of Turkey

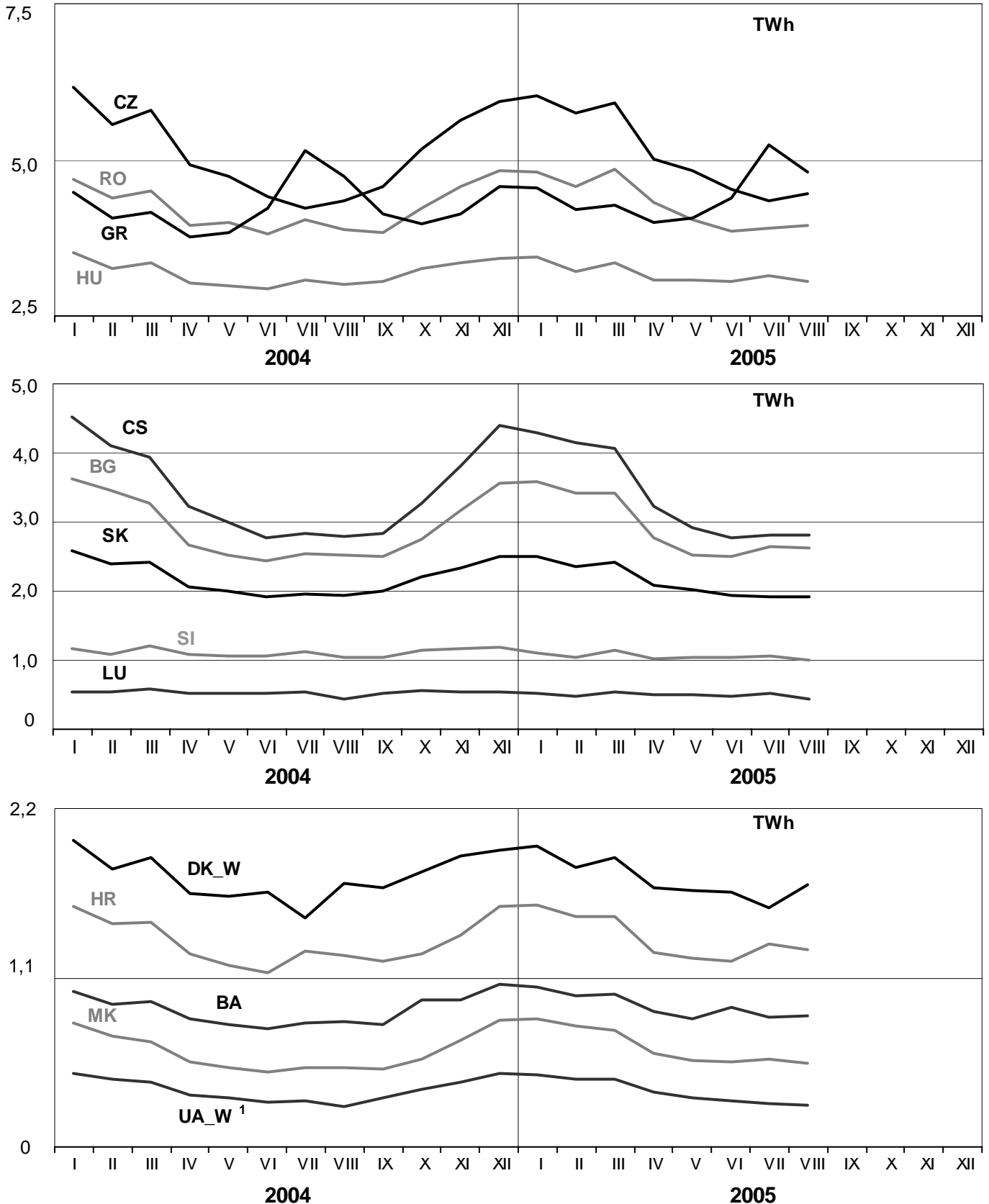
² UA_W represents the so-called Burshtyn Island synchronously interconnected with UCTE

These physical energy flows were measured on the cross-frontier transmission lines (< 110 kV) listed in table 9 of the Statistical Yearbook. These values may differ from the official statistics and the exchange balances in chapter 1.

All values are calculated to represent 100% of the national values



All values are calculated to represent 100% of the national values

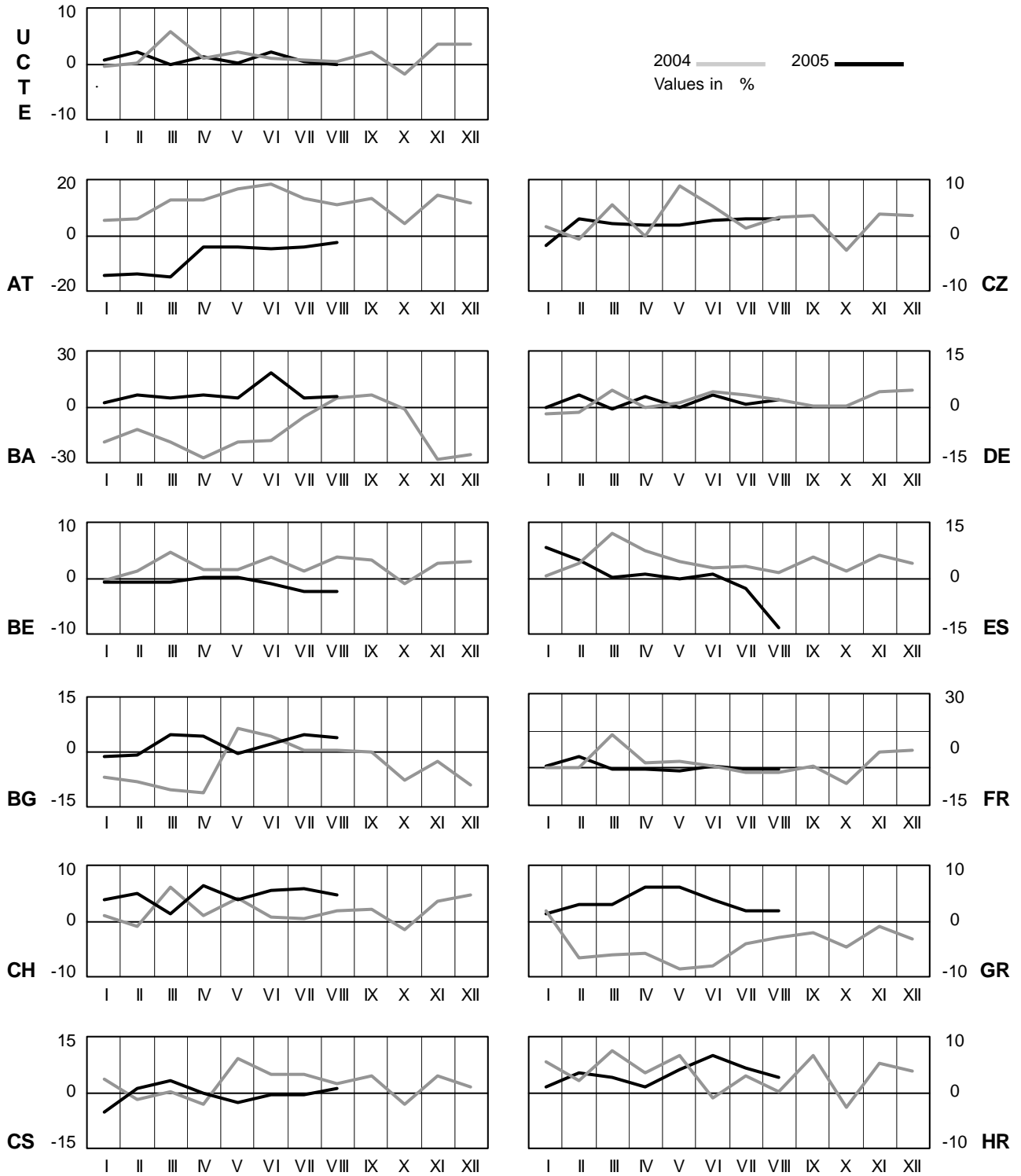


¹ UA_W represents the so-called Burshtyn Island synchronously interconnected with UCTE

4 Monthly consumption variation

August 2005

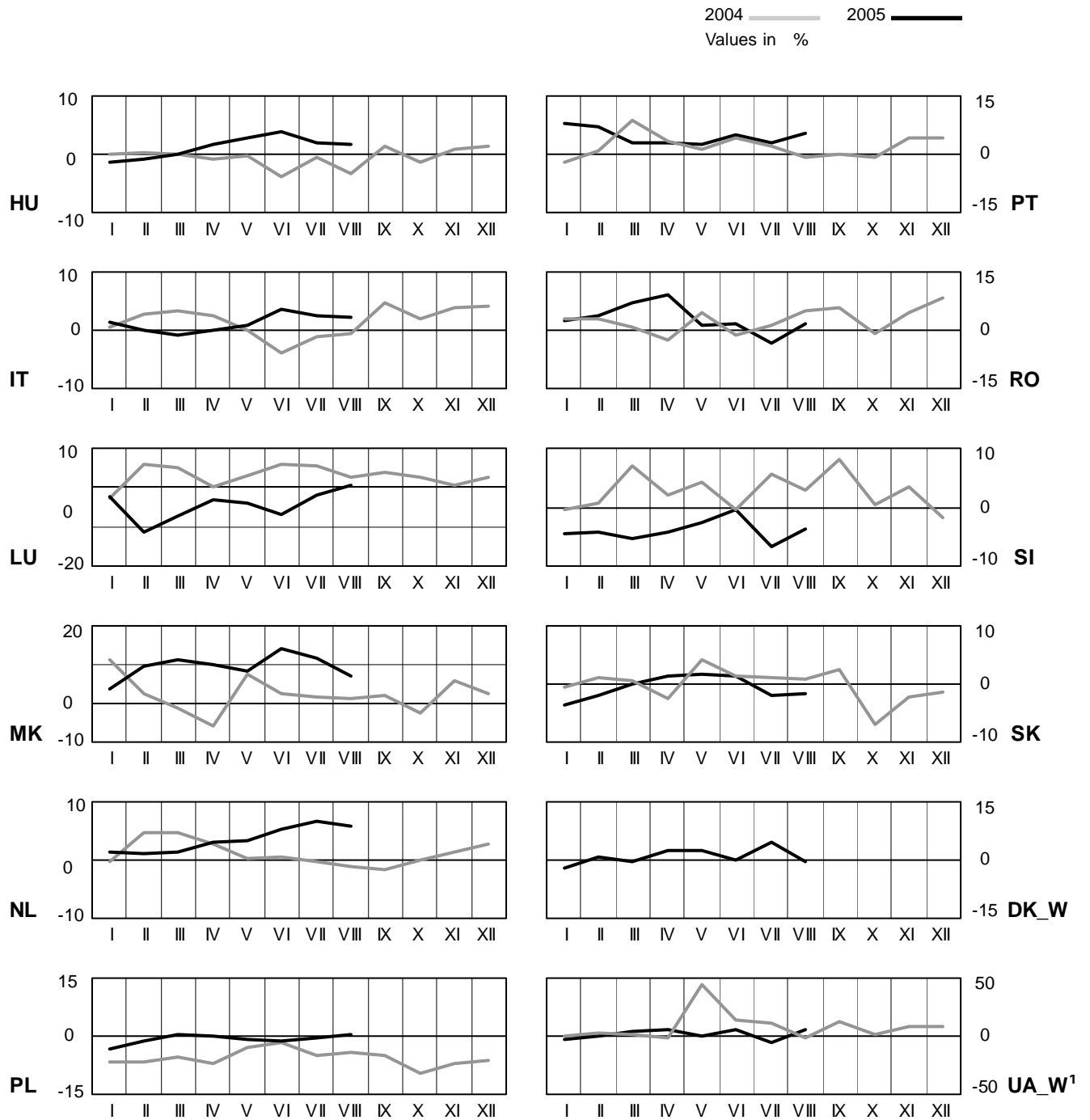
All values are calculated to represent 100% of the national values



4 Monthly consumption variation

August 2005

All values are calculated to represent 100% of the national values



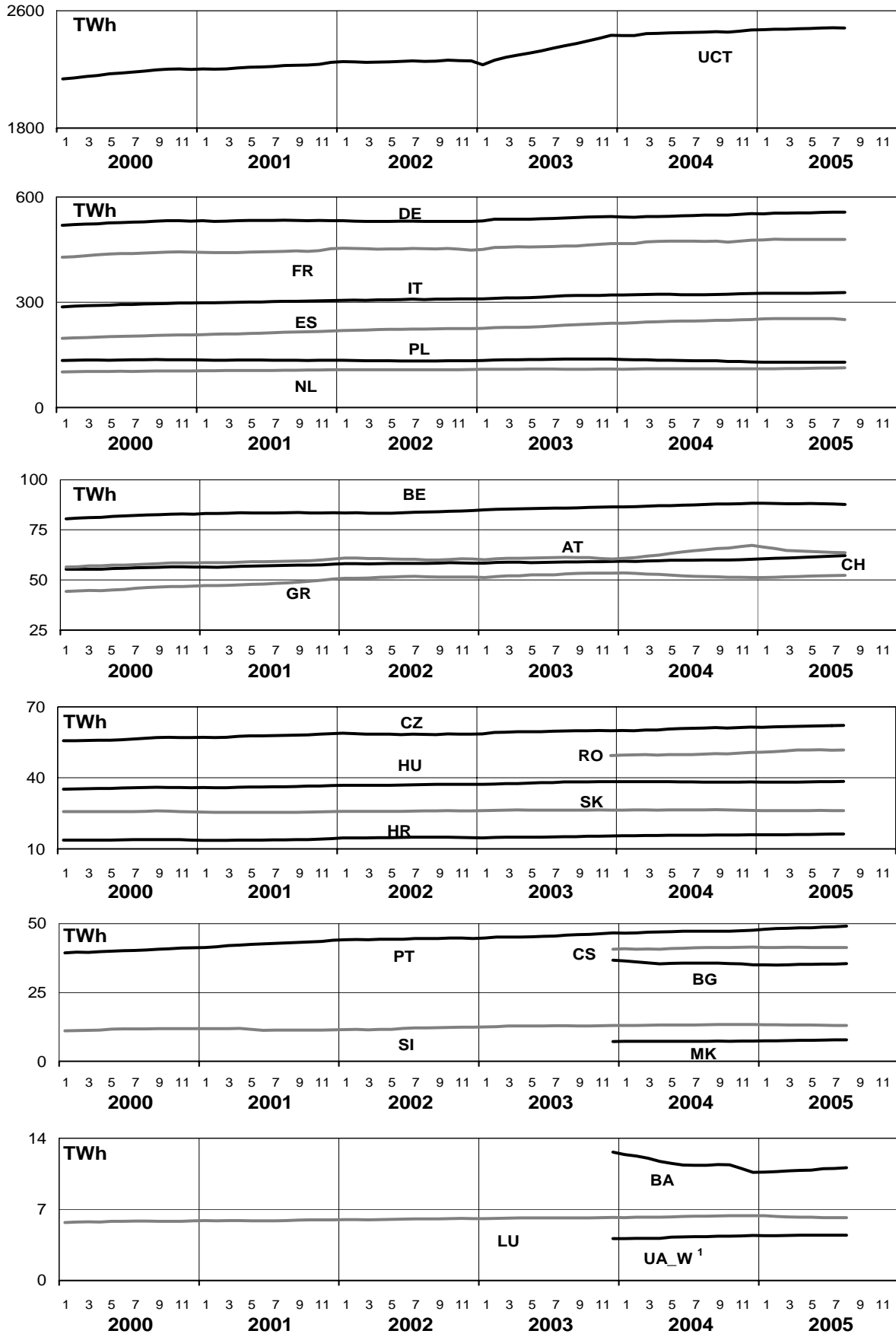
¹ UA_W represents the so-called Burshtyn Island synchronously interconnected with UCTE

5

Consumption of the last 12 months

August 2005

All values are calculated to represent 100% of the national values



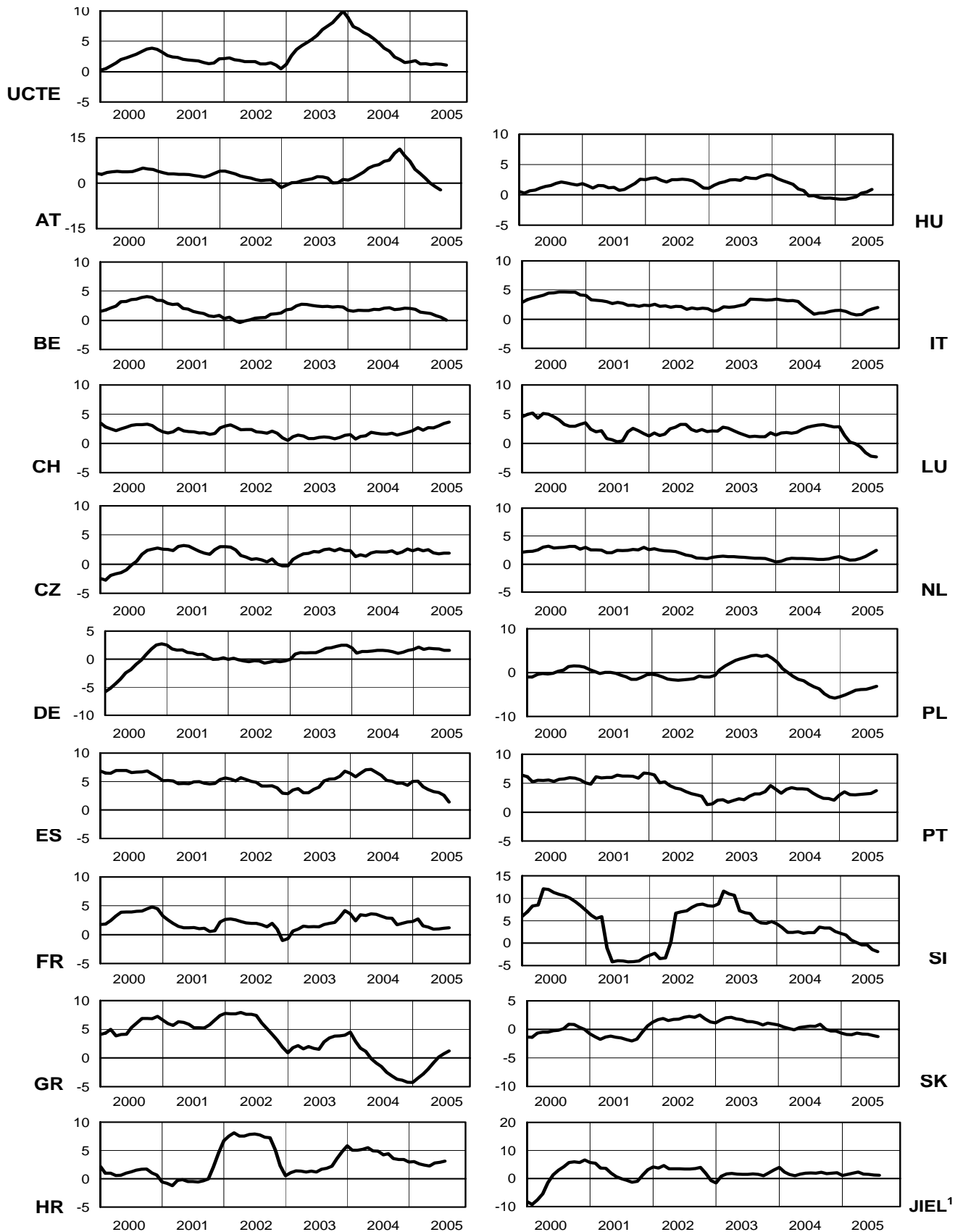
¹ UA_W represents the so-called Burshtyn Island synchronously interconnected with UCTE

6

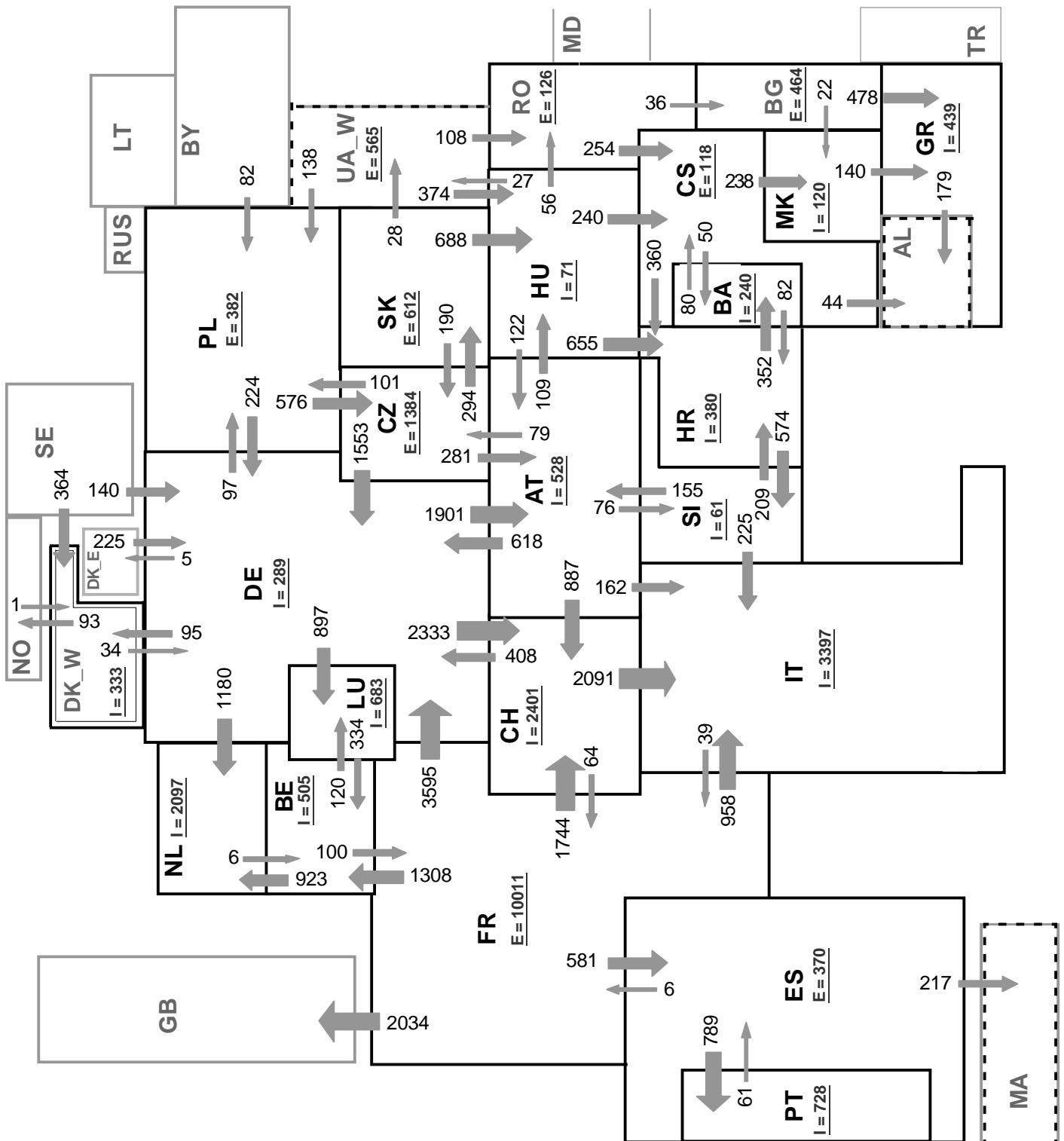
Variation of the last 12 months' consumption in %

August 2005

All values are calculated to represent 100% of the national values



¹ JIEL = FRY + FYROM (Federal Republic of Yugoslavia and former Yugoslav Republic of Macedonia)



Associate member

Synchronous operation with first region

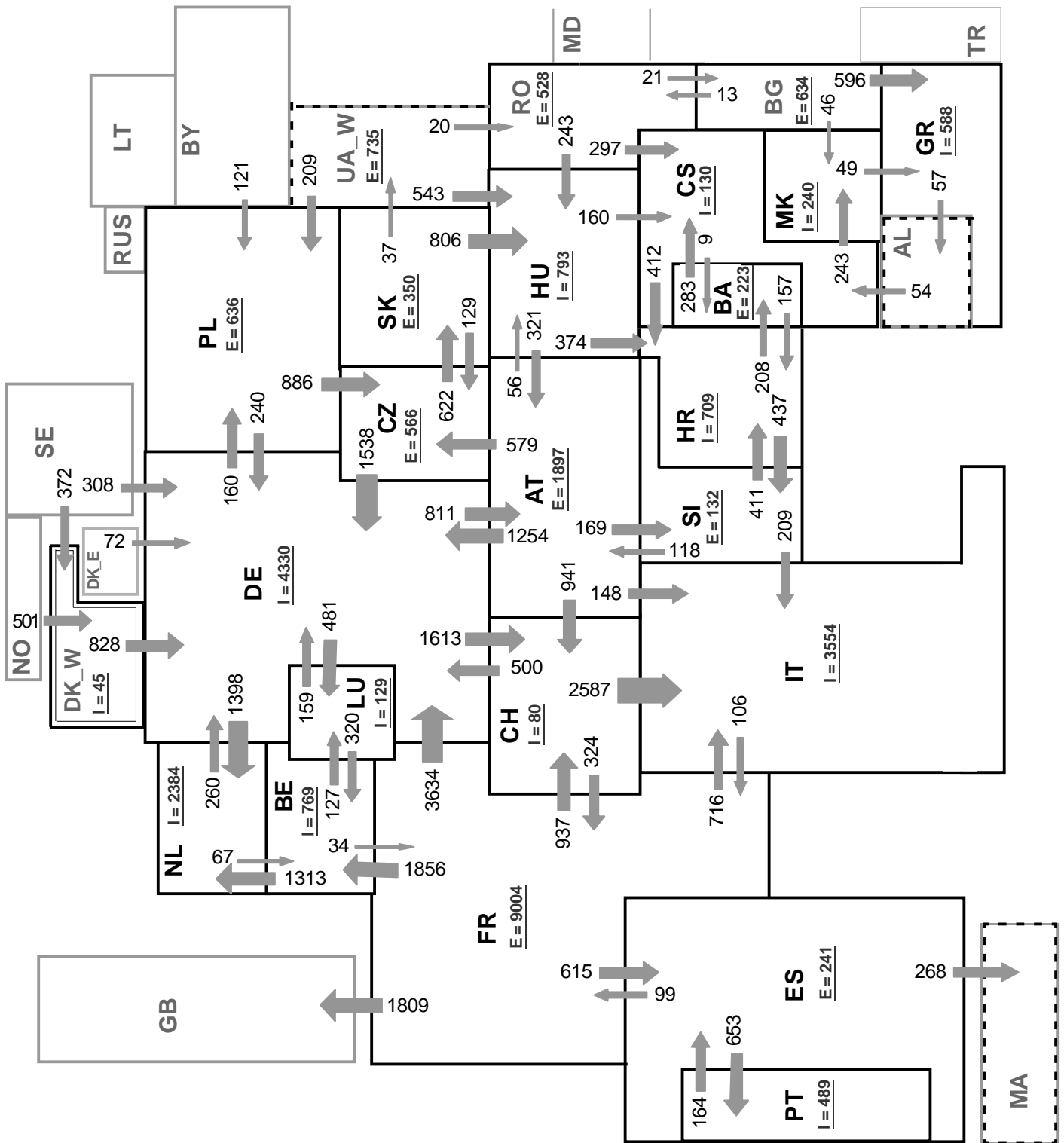
Sum of load flows in MW:

UCTE = 29701 MW Total = 33889 MW

* Central European Time (CET)

I = Import balance

E = Export balance



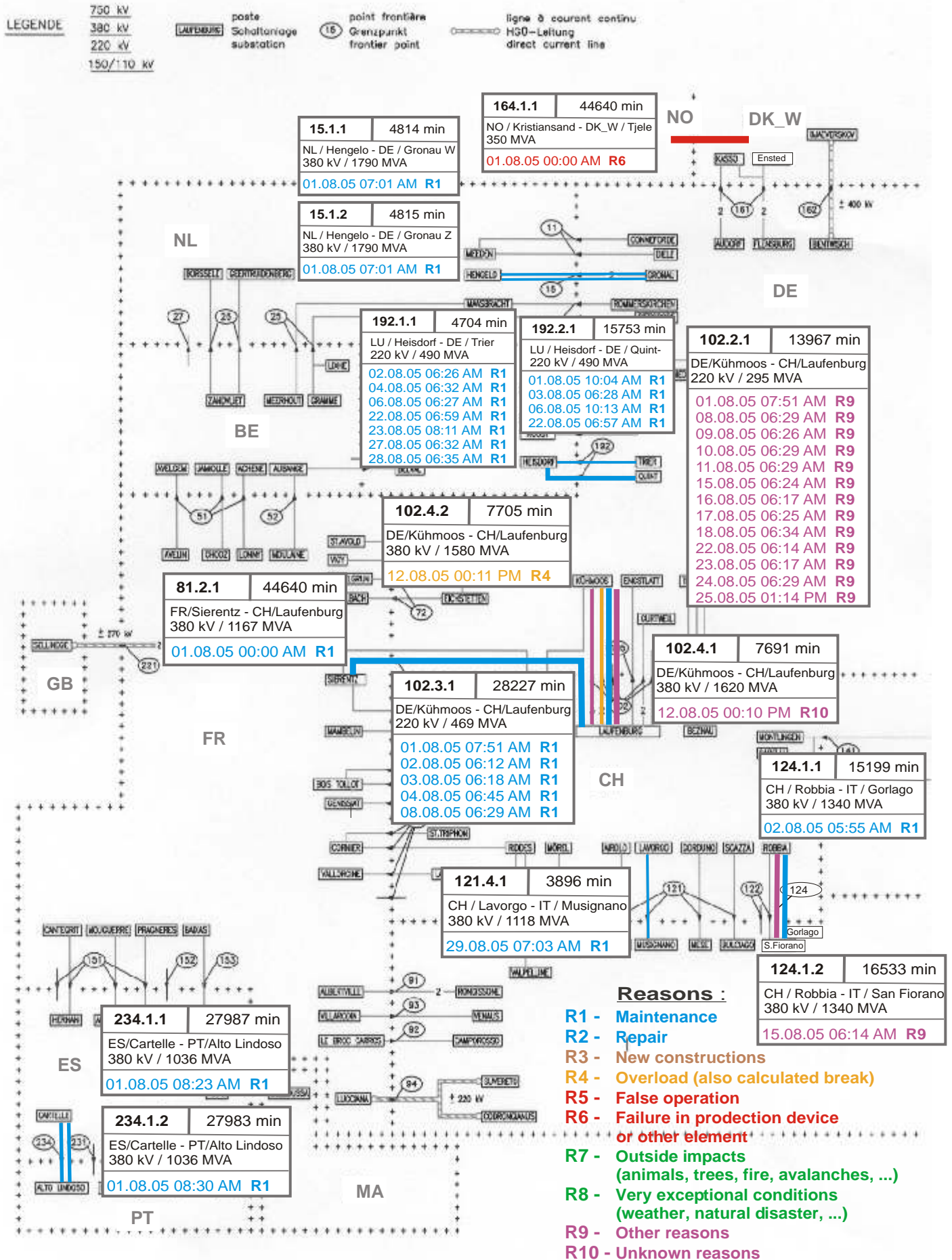
Associate member

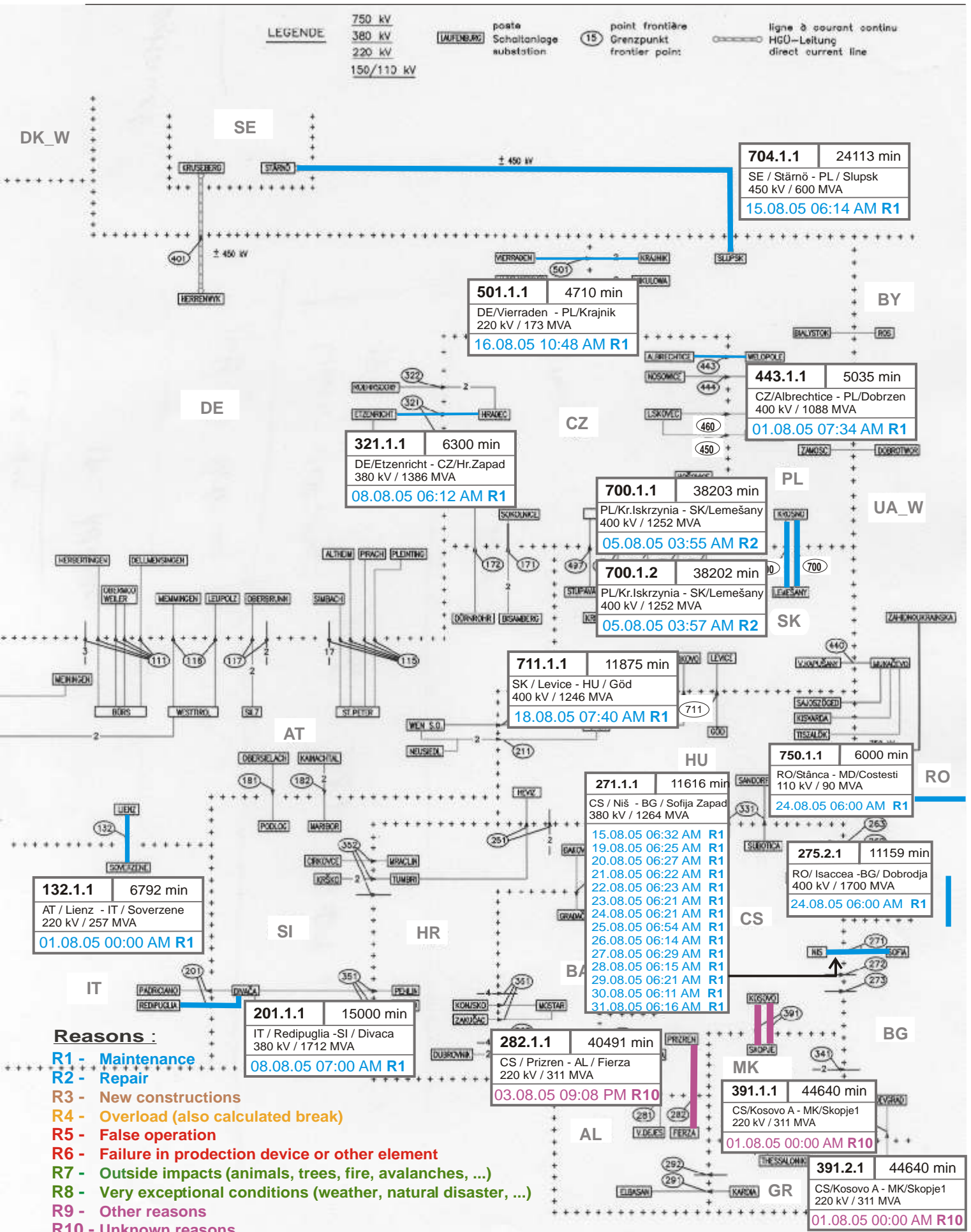
Synchronous operation with first region

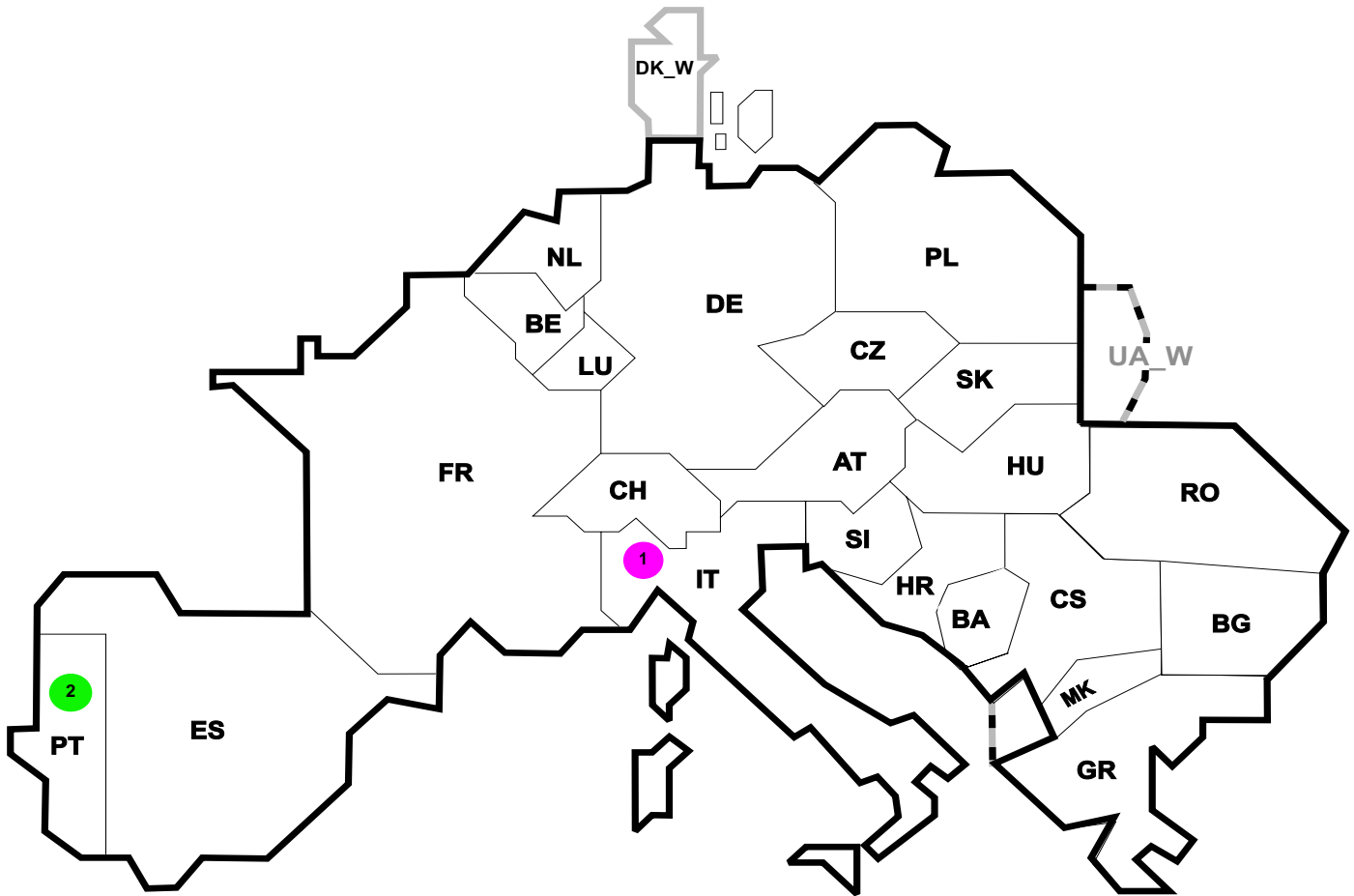
Sum of load flows in MW:

UCTE = 30909 MW Total = 36108 MW

* Central European Time (CET)
 I = Import balance
 E = Export balance







Reasons:

- R4 Overload (also calculated break)
- R5 False operation
- R6 Failure in protection device or other element
- R7 Outside impacts (animals, trees, fire, avalanches, ...)
(animals, trees, fire, avalanches, ...)
- R8 Very exceptional conditions
(weather, natural disaster, ...)
- R9 Other reasons
- R10 Unknown reasons

Nbr	Country	Substation	Reason	Energy not supplied [MWh]	Total loss of power [MW]	Restoration time [min]	Equivalent time of interruption ¹
1	IT	Novi Ligure	R9	20	6	197	0,03
2	PT	Mogofores	R7	9	0	9	0,10

¹ (year [in min] * energy not supply) / consumption last 12 months

Control area	Export Programs	Import Programs	Export Programs at 03:00	Import Programs at 03:00	Export Programs at 11:00	Import Programs at 11:00
AT	720453	780378	605	929	960	1365
BA	374478	165884	389	295	417	30
BE	558400	831246	902	1185	786	1350
BG	n.a.	n.a.	n.a.	n.a.	n.a.	n.a.
CH	1985403	2588401	1807	3949	2871	2965
CS	387894	448307	322	639	448	586
CZ	2053817	653680	2332	835	2781	971
DE	2025048	3200006	2107	3596	2270	5042
ES	756088	569924	1057	540	787	518
FR	7655900	1019898	9948	176	10512	1621
GR	27117	477221	35	455	35	540
HR	69389	540640	311	679	155	553
HU	603862	896343	873	921	754	1525
IT	142064	3120377	39	3437	106	3660
MK	63474	211444	0	79	0	194
NL	311448	1913838	148	2252	302	2697
PL	608965	121442	519	240	783	215
PT	4724	564420	0	800	0	500
RO	396187	149823	355	218	745	205
SI	484310	468259	552	647	491	402
SK	517013	99331	712	45	663	238
DK_W	414522	613178	0	564	740	870
UA_W ¹	328578	0	418	0	520	0

- Control areas can differ from national borders (i.e. German block which includes parts of AT, LU and DK).

- Values are calculated on an hourly base (MWh).

- This values are not the provisional values entered in the VULCANUS system, but the definitive values after an eventual correction during the actual date.

- Export Programs: Sum of all positive values of every hour of every border
 - Import Programs: Sum of all negative values of every hour of every border

- Export Programs at 03:00: Sum of all positive values the third Wednesday from 02:00 to 03:00 a.m.
 - Import Programs at 03:00: Sum of all negative values the third Wednesday from 02:00 to 03:00 a.m.

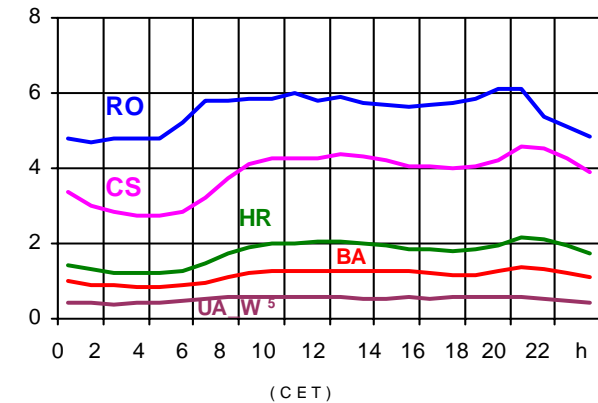
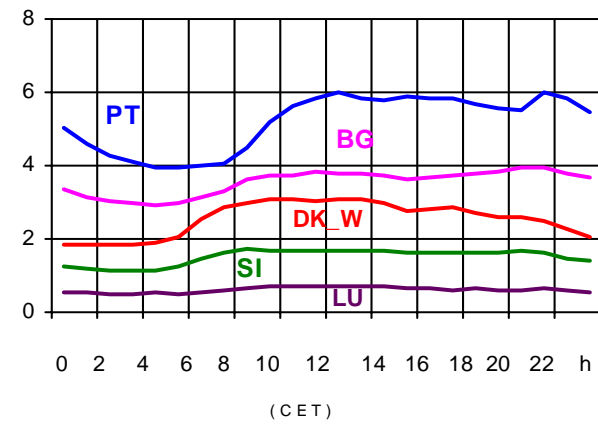
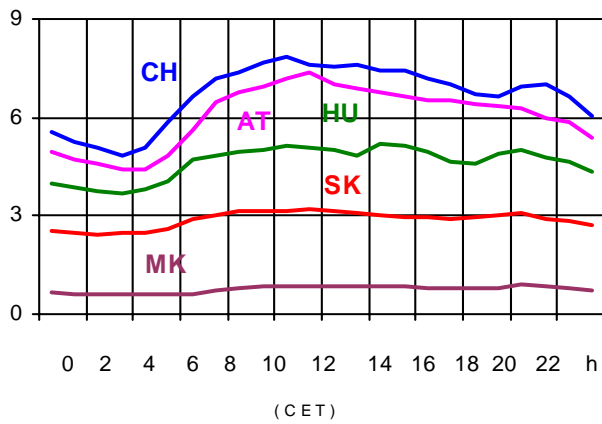
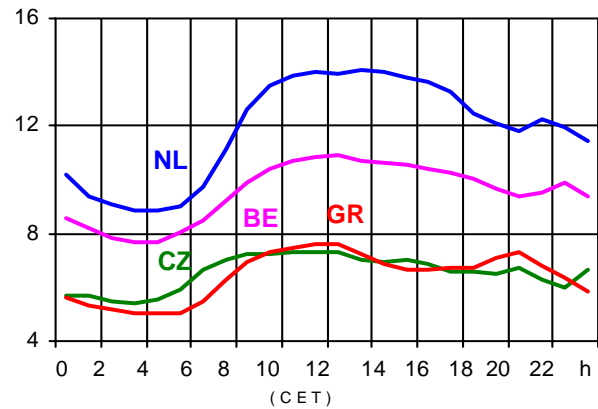
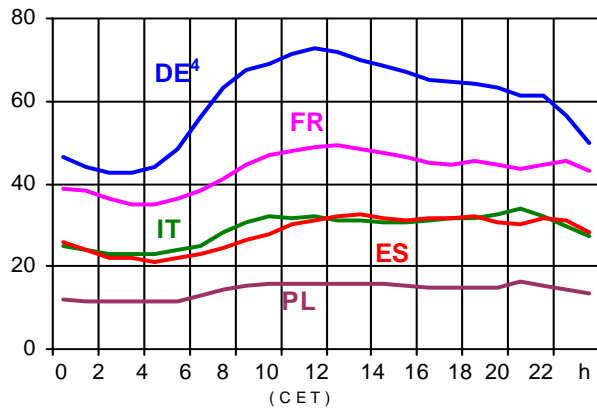
- Export Programs at 11:00: Sum of all positive values the third Wednesday from 10:00 to 11:00 a.m.
 - Import Programs at 11:00: Sum of all negative values the third Wednesday from 10:00 to 11:00 a.m.

¹ UA_W represents the so-called Burshtyn Island synchronously interconnected with UCTE

All values are calculated to represent 100% of the national values

Consumption hourly load curves¹ on 17.08.2005

Values in GW



	Peak load MW	var.% ²	Load representativity ¹ %	Parallel power ³ MW
AT	7368	-17,5	100	7414
BA	1365	-3,9	100	1496
BE	10890	-3,4	100	9832
BG	3949	-0,8	100	4427
CH	7840	-5,3	100	7871
CS	4574	-6,2	100	4119
CZ	7345	2,0	100	9138
DE ⁴	72967	0,9	91	71200
ES	32576	4,1	98	29694
FR	49477	-1,3	100	57184
GR	7599	3,9	100	6892
HR	2177	0,0	100	1521
HU	5176	-2,2	100	4310
IT	34004	-4,4	100	29450
LU	708	-3,4	99	686
MK	892	0,1	100	580
NL	14068	-3,9	100	11459
PL	16438	-0,7	100	16776
PT	6016	4,1	97	4994
RO	6114	1,6	100	5983
SI	1721	-2,4	95	1720
SK	3188	-0,3	100	3503
UCTE	290298	-1,3		290249
DK_W	3093	0,7	100	2998
UA_W ⁵	601	4,5	100	1083

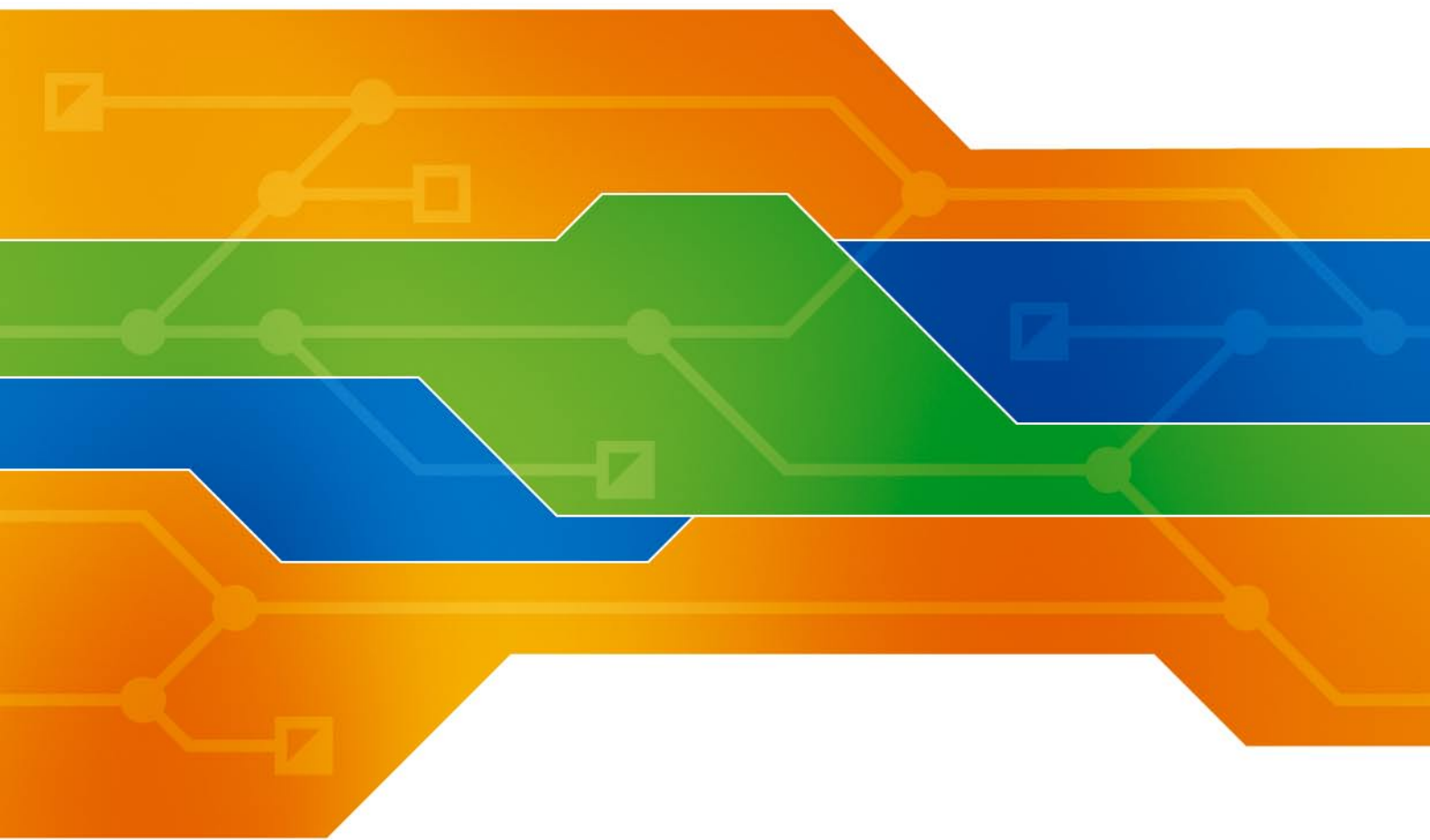
¹ Percentage as referred to total values in %

² Variation as compared to corresponding month of the previous year

³ Power produced in parallel operation (including autoproduction)

⁴ Values estimated on the basis of the vertical load. The vertical load is the total amount of the power flows out of the transmission network into distribution and large consumer networks.

⁵ UA_W represents the so-called Burshtyn Island synchronously interconnected with UCTE



Contact

Boulevard Saint-Michel, 15
B-1040 Brussels – Belgium
Tel +32 2 741 69 40 – Fax +32 2 741 69 49

info@ucte.org
www.ucte.org