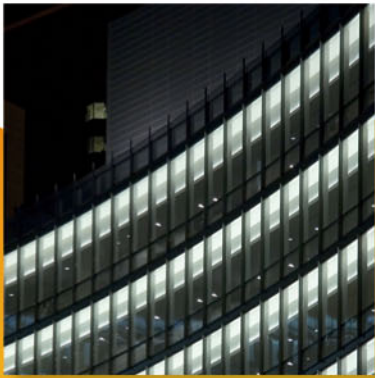


# UCTE



## July 2006

Monthly provisional values  
union for the co-ordination of transmission of electricity

<b>Table of contents</b>		<b>Page</b>
1	Electricity supply situation of the countries	2
2	Physical energy flows	3
3	Monthly consumption	4
4	Monthly consumption variation	6
5	Consumption of the last 12 months	8
6	Variation of the last 12 months' consumption	10
7	Load flows (night)	12
8	Load flows (day)	13
9	Unavailability of international tie lines ( major events )	14
10	Network reliability ( major events )	16
11	Scheduled exchanges	17
12	Load on the 3 <sup>rd</sup> Wednesday	18

#### **General remarks and abbreviations used in the tables**

- All values of production and consumption in chapter 1, 3&4, 5&6 and 12 are calculated to represent 100% of the national values.
- DK\_W Denmark West represents the Western part of Denmark synchronously interconnected with UCTE (Jutland and Funen).
- UA\_W Ukraine West represents the so-called Burshtyn Island synchronously interconnected with UCTE.
- CET Central European Time
- The Bulgarian values of production and consumption are gross values.

Countries	Net production in GWh							Exchange balance in GWh	Pump in GWh	Consumption in GWh			
	Therm. nuclear	Therm conv.	Hydro prod	Other renew.	Of which wind	Not identify	Total			monthly	var. [%]	last 12 months	var. [%]
AT	0	1519	3676	0	0	602	5797 <sup>1</sup>	-229	295	5273	4,1	66107	3,6
BA	0	694	367	0	0	0	1061	-208	0	853	1,4	11188	1,3
BE <sup>2</sup>	3338	2794	116	169	14	0	6417 <sup>1</sup>	603	141	6879	6,8	89430	2,1
BG	1207	1569	305	0	0	0	3081	-623	34	2424	-8,6	36671	3,7
CH	2073	182	3923	84	0	0	6262 <sup>1</sup>	-1165	379	4718	0,3	63495	2,5
CS	0	2088	974	0	0	0	3062 <sup>1</sup>	-112	29	2921	4,0	42360	2,5
CZ	1780	3840	304	9	2	0	5933 <sup>1</sup>	-1299	84	4550	4,4	64269	3,6
DE	12731	28469	1981	1990	929	0	45171 <sup>1</sup>	577	688	45060	2,9	558513	0,4
ES	4798	15636	1847	1652	1143	0	23933 <sup>1</sup>	-365	548	23589	6,6	256753	4,8
FR	32900	2815	4368	327	94	0	40410	-4945	559	34906	0,3	484510	0,8
GR	0	3969	413	175	168	0	4557 <sup>1</sup>	504	40	5021	-4,3	53394	2,2
HR	0	553	364	1	0	0	918 <sup>1</sup>	520	15	1423	7,5	16969	4,4
HU <sup>3</sup>	1248	1619	0	0	0	0	2867 <sup>1</sup>	503	0	3370	6,1	40312	4,0
IT	0	22854	4660	609	183	0	28123 <sup>1</sup>	3848	732	31239	4,1	333600	1,3
LU	0	251	69	7	3	0	327	326	96	557	5,3	6558	6,3
MK	0	391	121	0	0	0	512 <sup>1</sup>	65	0	577	0,7	8337	7,1
NL	313	6436	0	479	82	0	7228 <sup>1</sup>	1892	0	9120	-0,6	115821	2,6
PL	0	10910	157	17	9	0	11084 <sup>1</sup>	-458	66	10560	7,4	134802	4,0
PT	0	2878	527	347	176	0	3752 <sup>1</sup>	533	96	4372	4,4	50752	3,4
RO	479	2245	1710	0	0	0	4434 <sup>1</sup>	-228	18	4188	7,3	52239	1,0
SI	491	424	260	0	0	0	1175	-58	0	1117	5,9	13057	0,0
SK	1254	395	349	0	0	191	2189 <sup>1</sup>	-90	17	2082	8,3	26960	2,8
<b>UCTE</b>	<b>62612</b>	<b>112531</b>	<b>26491</b>	<b>5866</b>	<b>2803</b>	<b>793</b>	<b>208293<sup>1</sup></b>	<b>-409</b>	<b>3837</b>	<b>204799</b>	<b>3,2</b>	<b>2526097</b>	<b>1,9</b>
DK_W	0	1387	1	273	156	0	1661 <sup>1</sup>	-43	0	1618	3,9	21683	2,1
UA_W	0	568	8	0	0	0	576 <sup>1</sup>	-255	0	321	13,0	4369	-1,6

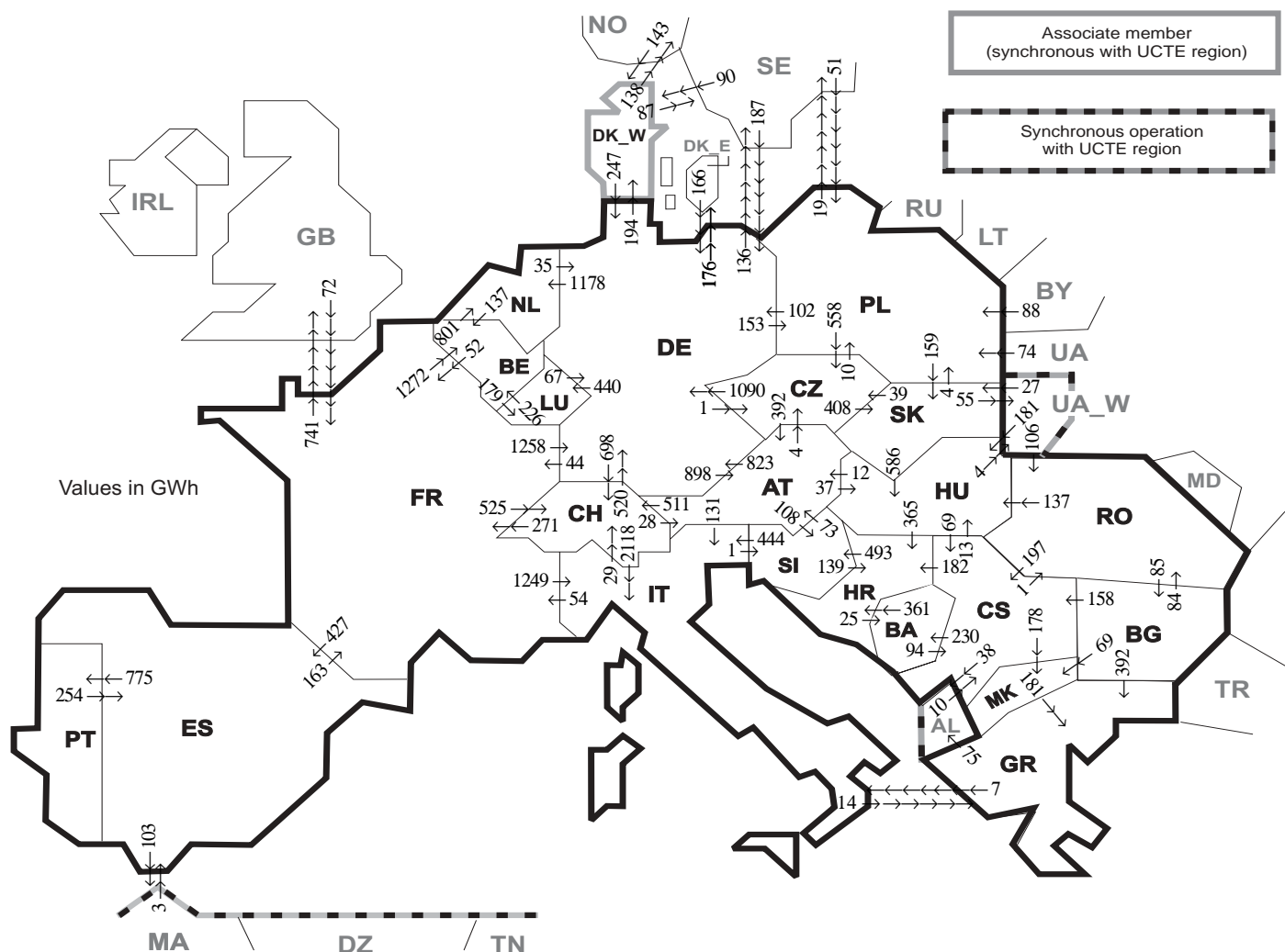
<sup>1</sup> Including deliveries from industry

<sup>2</sup> The reported figures are best estimates based on actual measurements and extrapolations.

<sup>3</sup> Data on hydro, other renewable, not clearly identifiable production are not yet available.

All representativities of the national production and consumption values used to calculate values at a representativity of 100% as stated in the table above

Countries	AT	BA	BE	BG	CH	CS	CZ	DE	ES	FR	GR	HR	HU	IT	LU	MK	NL	PL	PT	RO	SI	SK	DK_W	UA_W
Production																								
Therm.nuclear	100	100	100	100	100	100	100	100	100	100	100	100	100	100	100	100	100	100	100	100	100	100	100	100
Thermal conv.	100	100	100	100	100	100	100	100	97	100	100	100	100	100	100	100	100	100	94	100	100	100	100	100
Hydro prod	100	100	100	100	100	100	100	100	100	100	100	100	100	100	100	100	100	100	100	100	100	100	100	100
Other renew.	100	100	100	100	100	100	100	100	95	100	100	100	100	100	100	100	100	100	100	100	100	100	100	100
Not identify	100	100	100	100	100	100	100	100	100	100	100	100	100	100	100	100	100	100	100	100	100	100	100	100
Consumption	100	100	100	100	100	100	100	100	98	100	100	100	100	100	100	100	100	100	96	100	95	100	100	100



Exporting countries	Importing countries																										Sum export
	AT	BA	BE	BG	CH	CS	CZ	DE	ES	FR	GR	HR	HU	IT	LU	MK	NL	PL	PT	RO	SI	SK	DK_W	UA_W	Other III <sup>1</sup>		
AT	-	-	-	-	511	-	4	823	-	-	-	37	131	-	-	-	-	-	-	-	108	-	-	-	-	1614	
BA	-	-	-	-	-	94	-	-	-	-	-	361	-	-	-	-	-	-	-	-	-	-	-	-	-	455	
BE	-	-	-	-	-	-	-	-	-	52	-	-	-	-	179	-	801	-	-	-	-	-	-	-	-	1032	
BG	-	-	-	-	-	158	-	-	-	-	392	-	-	-	69	-	-	-	-	84	-	-	-	-	0	703	
CH	28	-	-	-	-	-	-	520	-	271	-	-	2118	-	-	-	-	-	-	-	-	-	-	-	-	2937	
CS	-	230	-	0	-	-	-	-	-	-	-	182	13	-	178	-	-	-	-	1	-	-	-	-	38	642	
CZ	392	-	-	-	-	-	-	1090	-	-	-	-	-	-	-	-	10	-	-	-	408	-	-	-	-	1900	
DE	898	-	-	-	698	-	1	-	-	44	-	-	-	440	-	1178	153	-	-	-	-	194	-	312	3918		
ES	-	-	-	-	-	-	-	-	-	163	-	-	-	-	-	-	-	-	775	-	-	-	-	-	103	1041	
FR	-	-	1272	-	525	-	-	1258	427	-	-	-	1249	-	-	-	-	-	-	-	-	-	-	-	741	5472	
GR	-	-	-	0	-	-	-	-	-	-	-	-	7	-	0	-	-	-	-	-	-	-	-	-	75	82	
HR	-	25	-	-	-	0	-	-	-	-	-	-	0	-	-	-	-	-	-	-	493	-	-	-	518		
HU	12	-	-	-	-	69	-	-	-	-	-	365	-	-	-	-	-	-	-	0	0	-	4	-	450		
IT	0	-	-	-	29	-	-	-	-	54	14	-	-	-	-	-	-	-	-	-	1	-	-	-	98		
LU	-	-	226	-	-	-	-	67	-	-	-	-	-	-	-	-	-	-	-	-	-	-	-	-	293		
MK	-	-	-	0	-	0	-	-	-	-	181	-	-	-	-	-	-	-	-	-	-	-	-	-	181		
NL	-	-	137	-	-	-	-	35	-	-	-	-	-	-	-	-	-	-	-	-	-	-	-	-	172		
PL	-	-	-	-	-	-	558	102	-	-	-	-	-	-	-	-	-	-	-	-	-	-	-	-	838		
PT	-	-	-	-	-	-	-	-	254	-	-	-	-	-	-	-	-	-	-	-	-	-	-	-	254		
RO	-	-	-	85	-	197	-	-	-	-	-	-	137	-	-	-	-	-	-	-	-	-	-	0	419		
SI	73	-	-	-	-	-	-	-	-	-	-	139	444	-	-	-	-	-	-	-	-	-	-	-	656		
SK	-	-	-	-	-	39	-	-	-	-	-	586	-	-	-	-	4	-	-	-	-	-	55	-	684		
DK_W	-	-	-	-	-	-	247	-	-	-	-	-	-	-	-	-	-	-	-	-	-	-	-	225	472		
UA_W	-	-	-	-	-	-	-	-	-	-	-	181	-	-	-	-	-	-	-	106	27	-	-	-	314		
Other III <sup>1</sup>	-	-	-	0	-	10	-	353	3	72	0	-	-	-	-	-	-	213	-	0	-	233	-	-	884		
<b>Sum imp</b>	<b>1403</b>	<b>255</b>	<b>1635</b>	<b>85</b>	<b>1763</b>	<b>528</b>	<b>602</b>	<b>4495</b>	<b>684</b>	<b>656</b>	<b>587</b>	<b>1047</b>	<b>954</b>	<b>3949</b>	<b>619</b>	<b>247</b>	<b>1979</b>	<b>380</b>	<b>775</b>	<b>191</b>	<b>602</b>	<b>594</b>	<b>427</b>	<b>59</b>	<b>1513</b>	<b>26029</b>	

Sum of physical energy flows between UCTE countries = 22818GWh

Total physical energy flows = 26029GWh

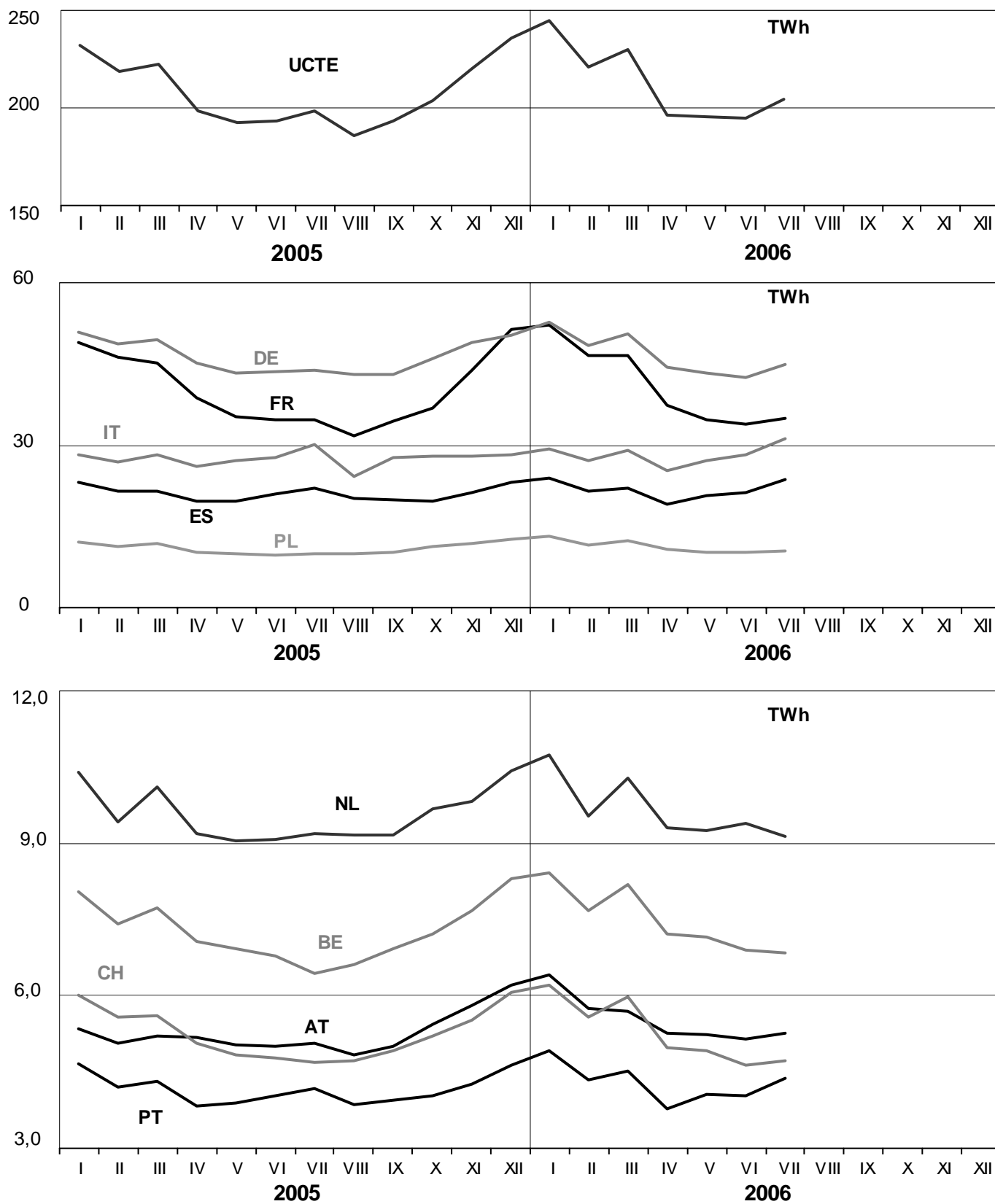
<sup>1</sup> Other III: Albania, Belarus, Denmark East, Great Britain, Morocco, Republic of Moldavia, Norway, Sweden, Republic of Turkey and Ukraina

These physical energy flows were measured on the cross-frontier transmission lines (≤ 110 kV) listed in table 9 of the Statistical Yearbook. These values may differ from the official statistics and the exchange balances in chapter 1.

# 3

## Monthly consumption

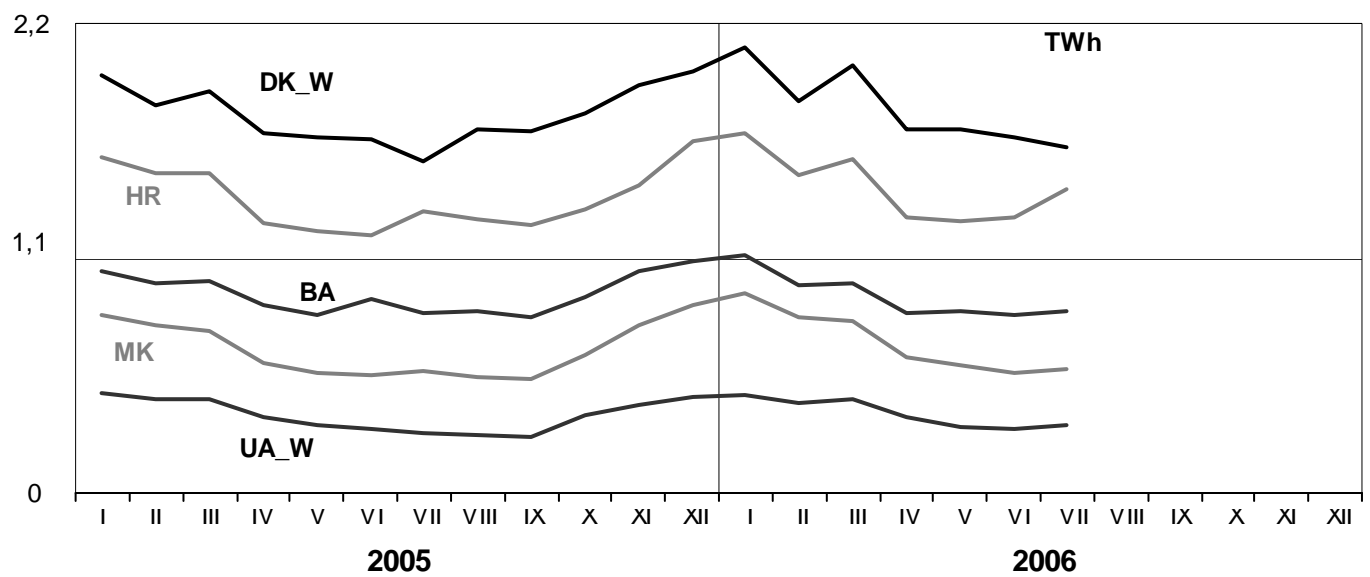
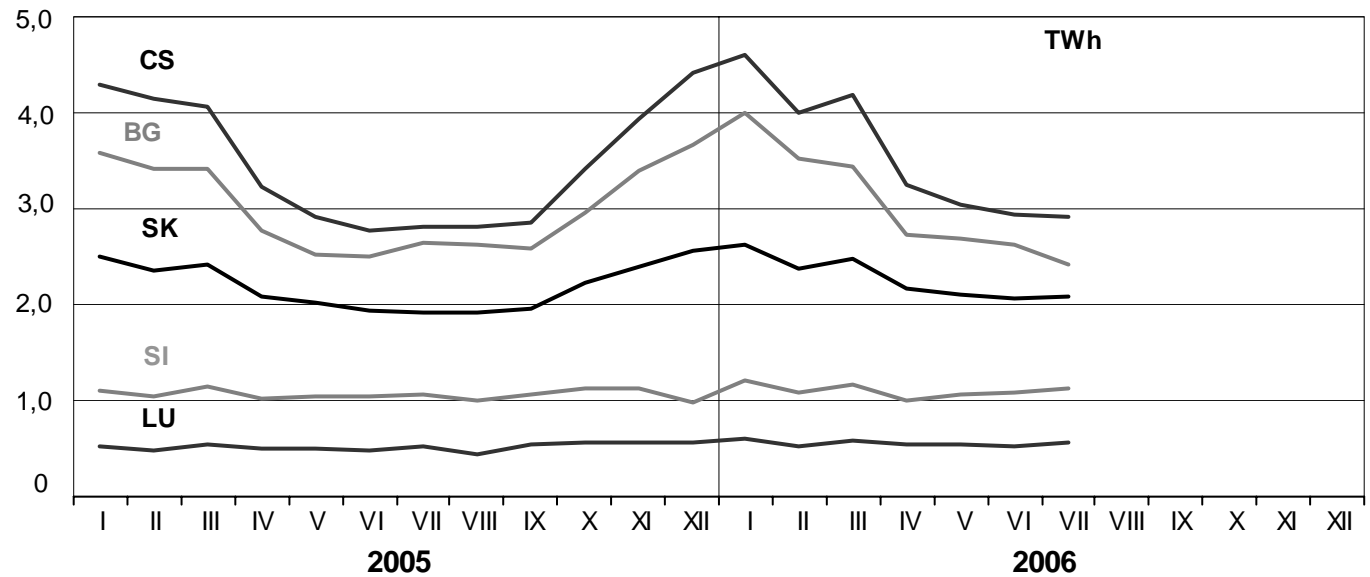
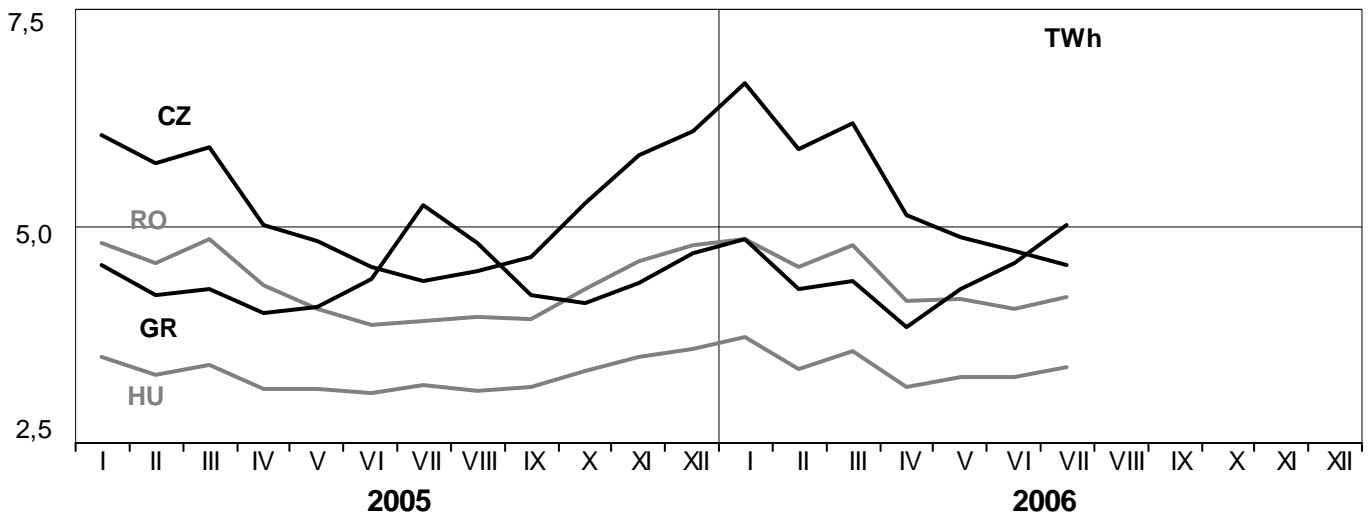
July 2006



# 3

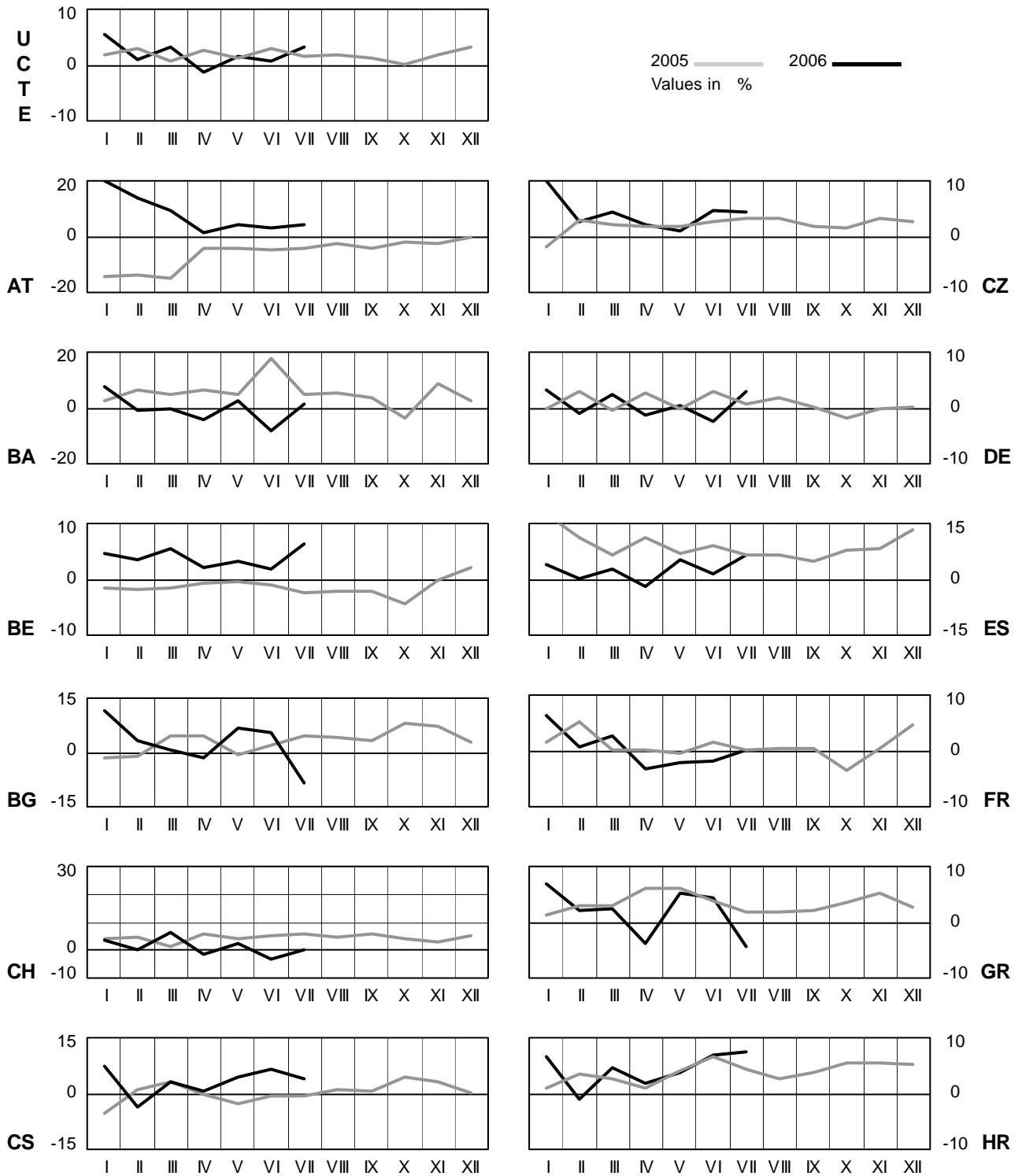
## Monthly consumption

July 2006



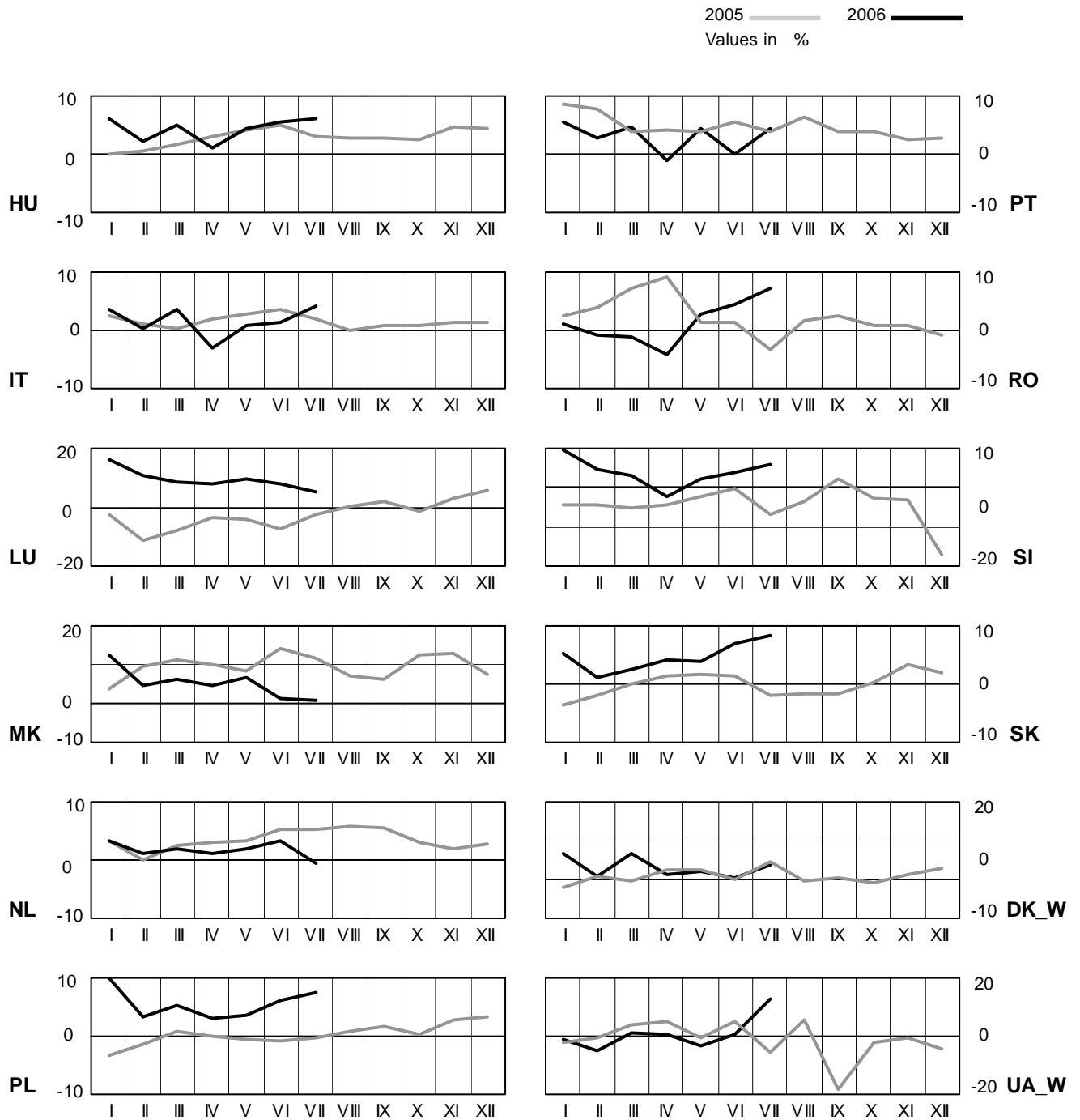
# 4 Monthly consumption variation

July 2006



# 4 Monthly consumption variation

July 2006

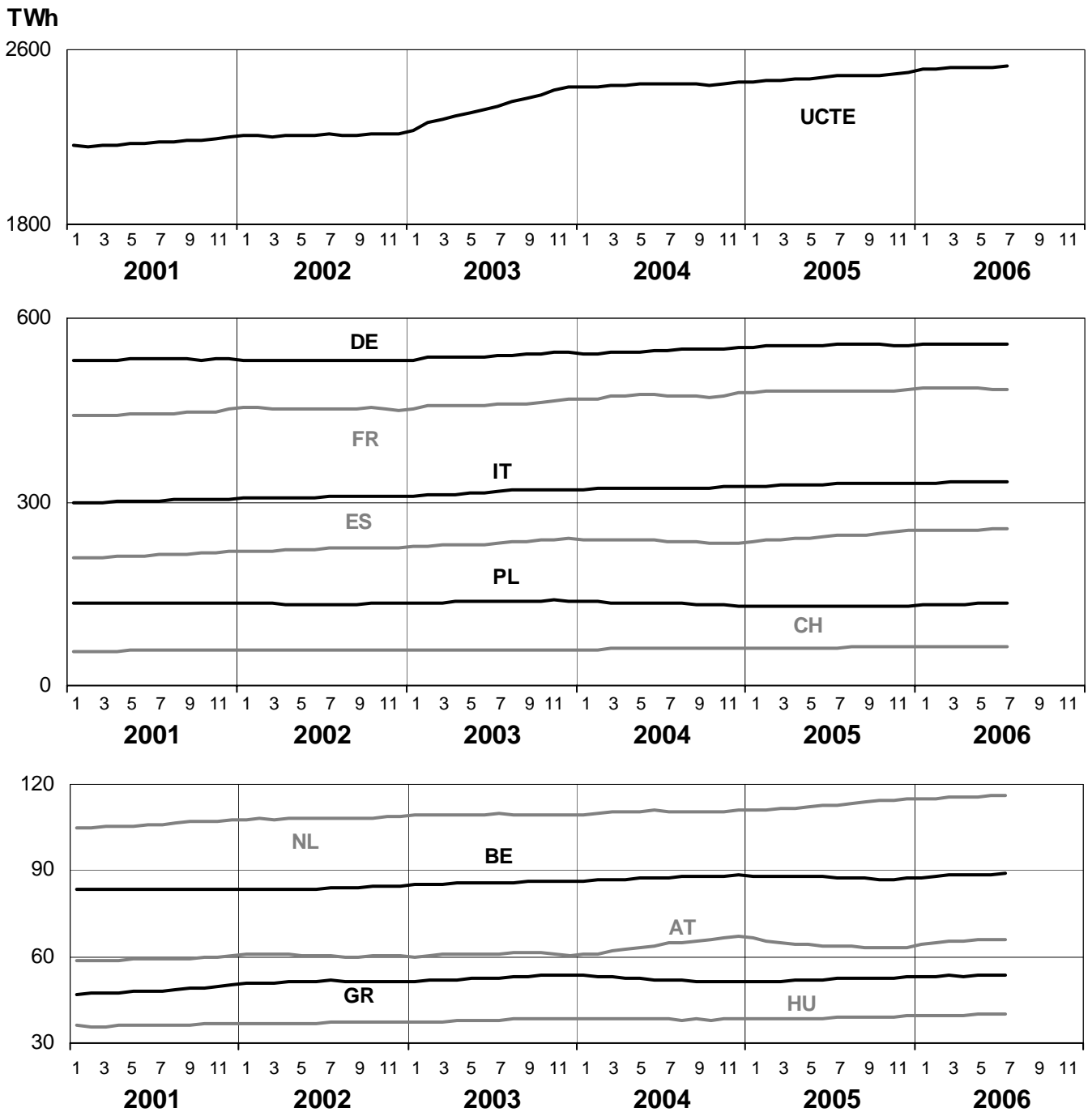




# 5

## Consumption of the last 12 months

July 2006

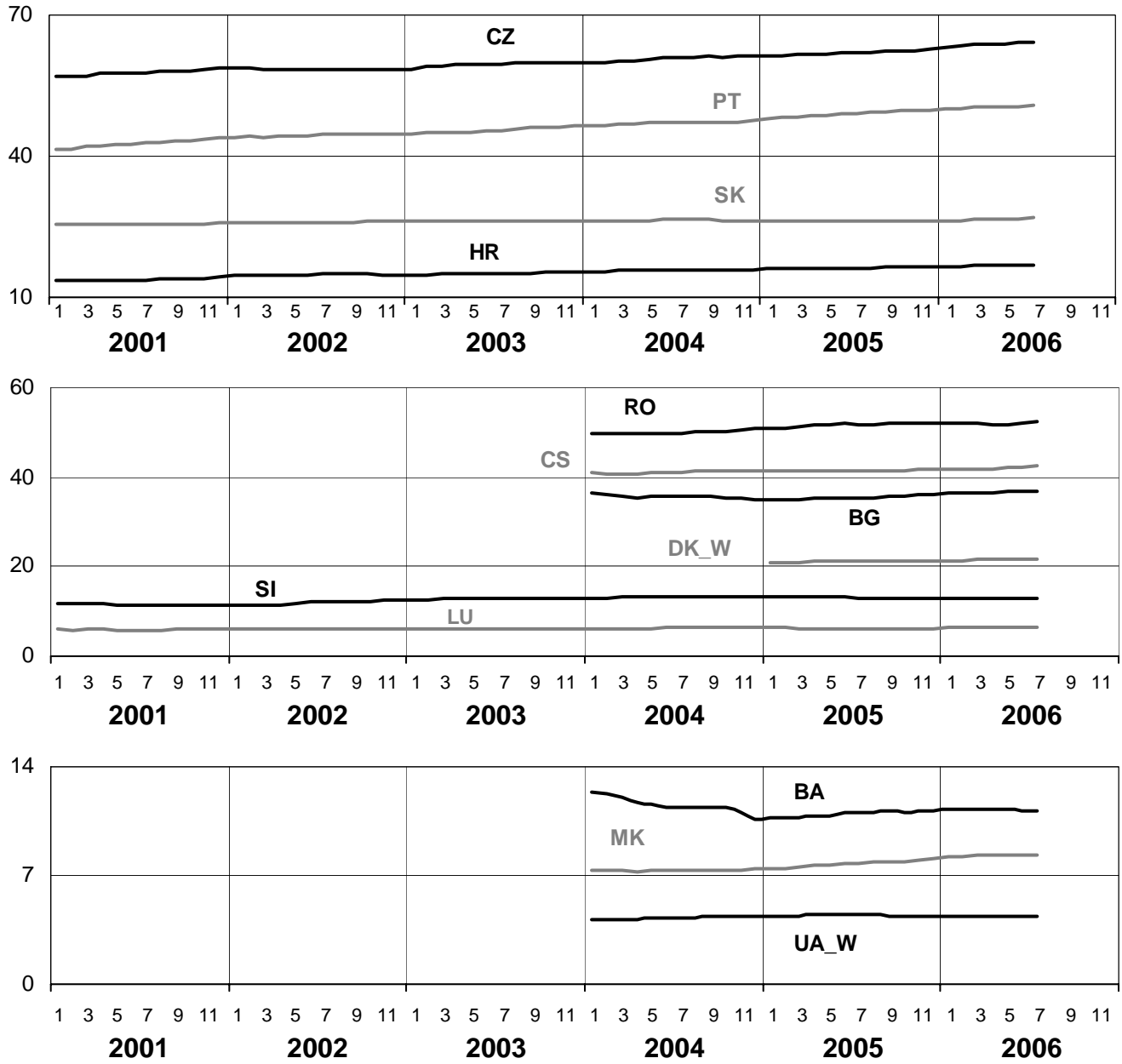


# 5

## Consumption of the last 12 months

July 2006

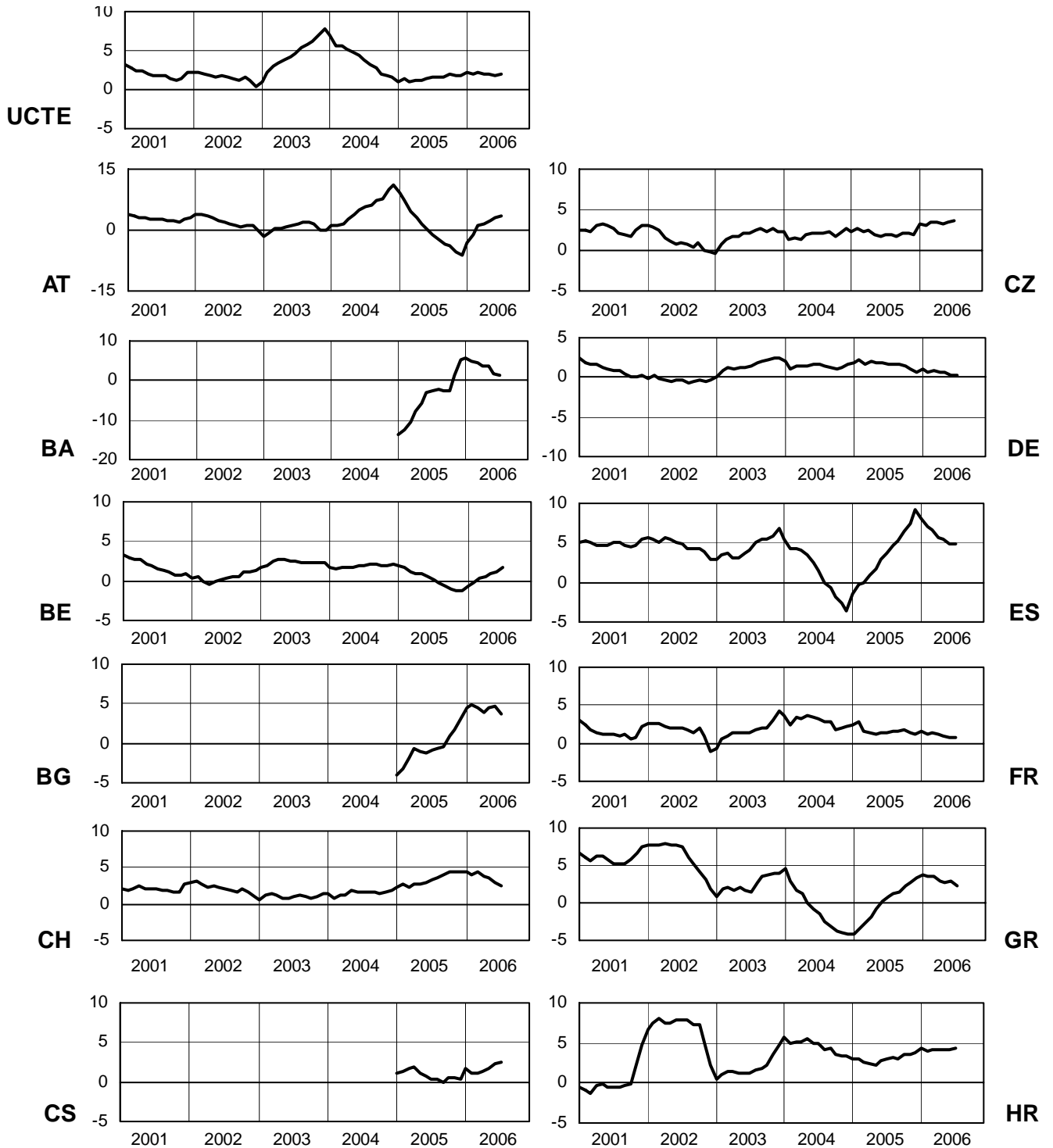
TWh



# 6

## Variation of the last 12 months' consumption in %

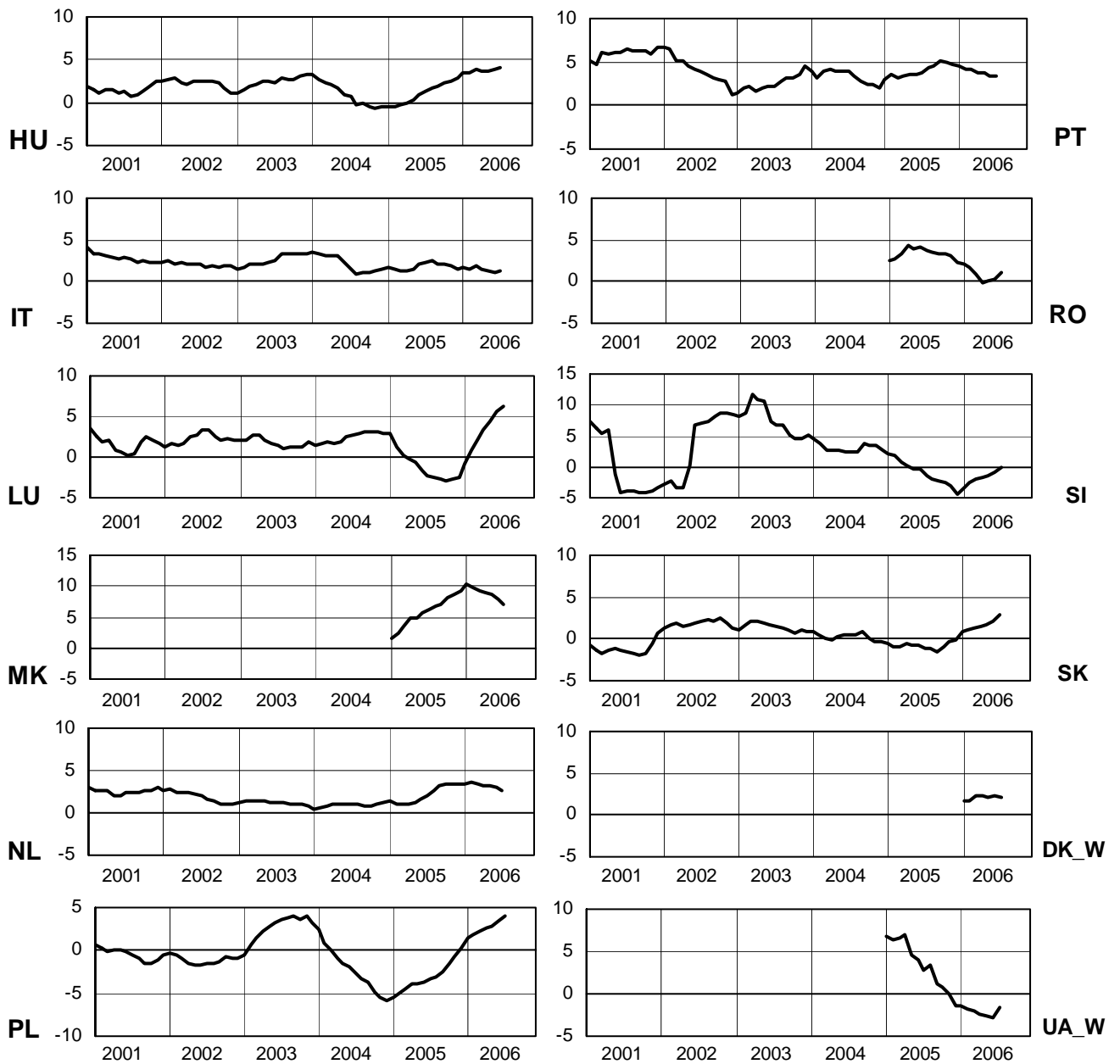
July 2006

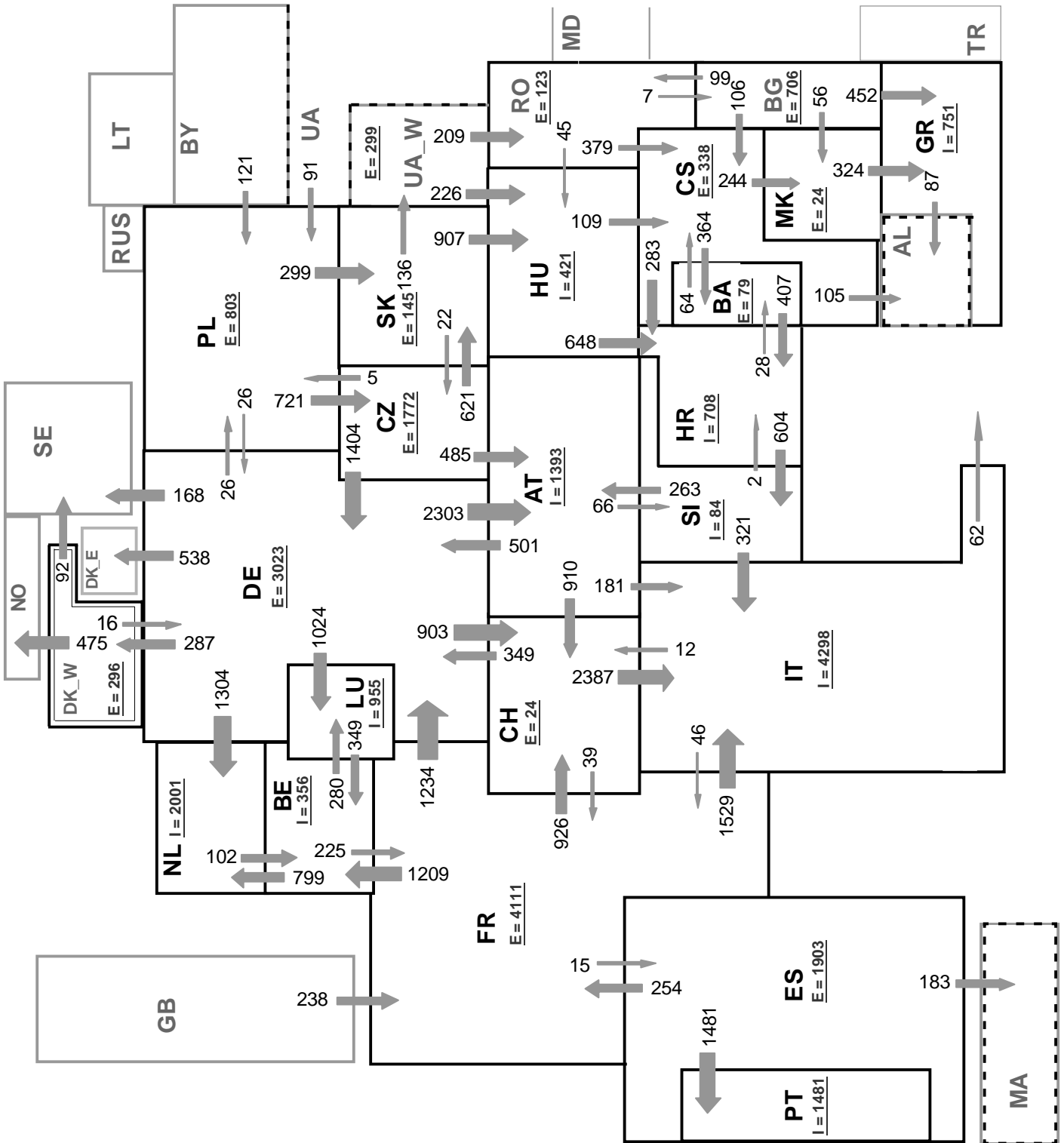


# 6

## Variation of the last 12 months' consumption in %

July 2006





Associate member

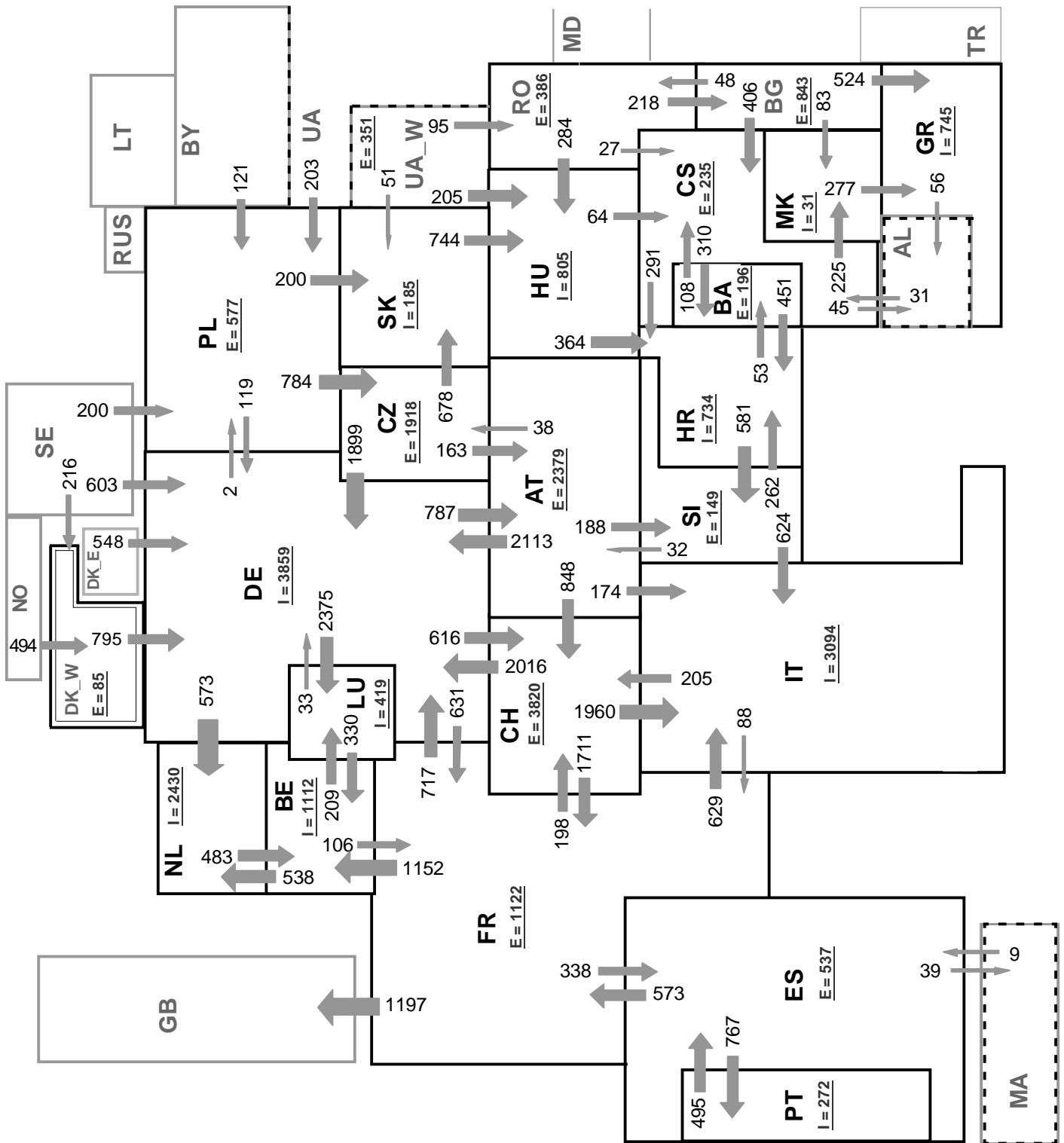
Synchronous operation with UCTE region

**Sum of load flows in MW:**

**UCTE = 27811 MW**

**Total = 30783 MW**

I = Import balance  
E = Export balance



Associate member

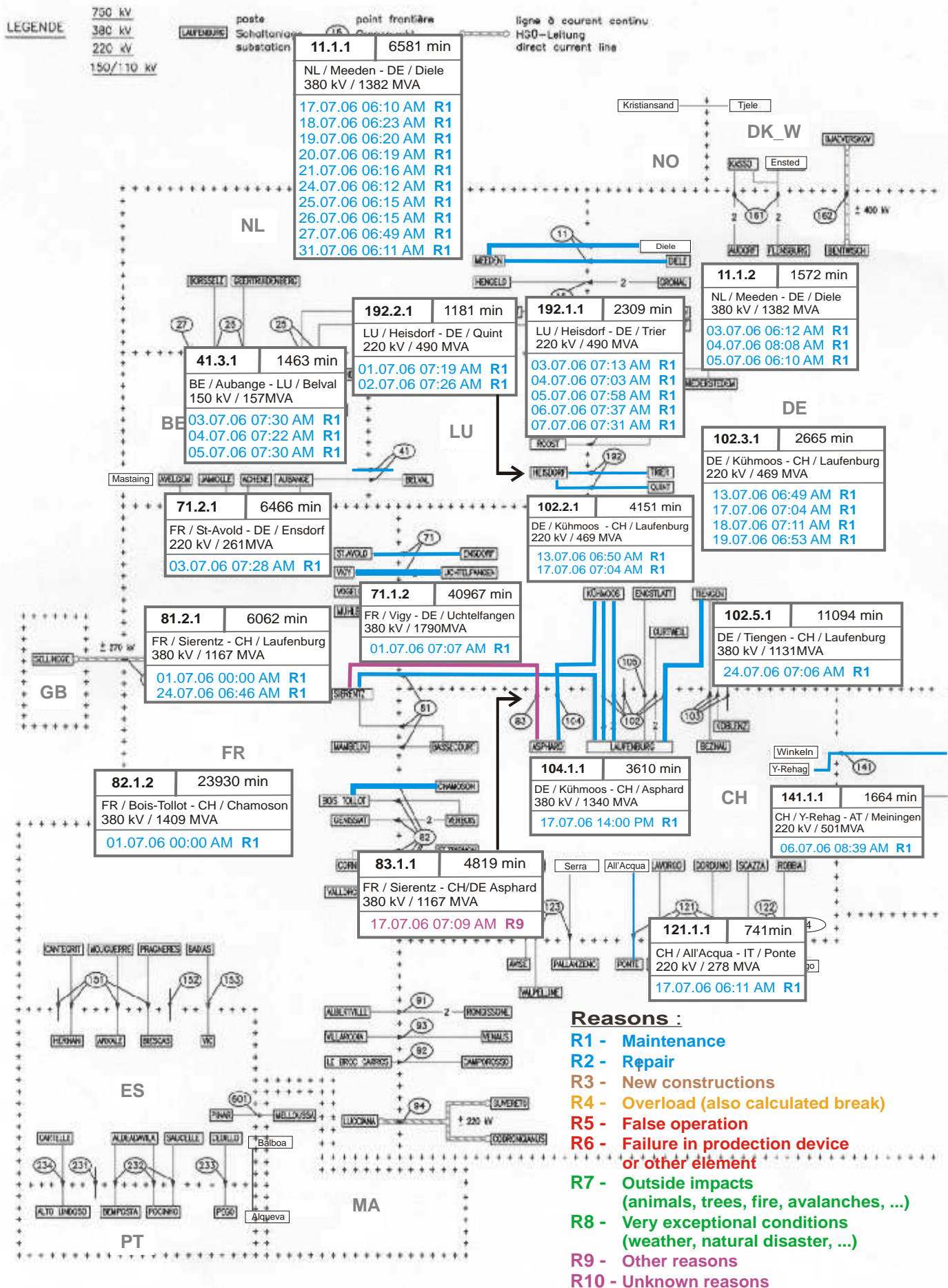
Synchronous operation with UCTE region

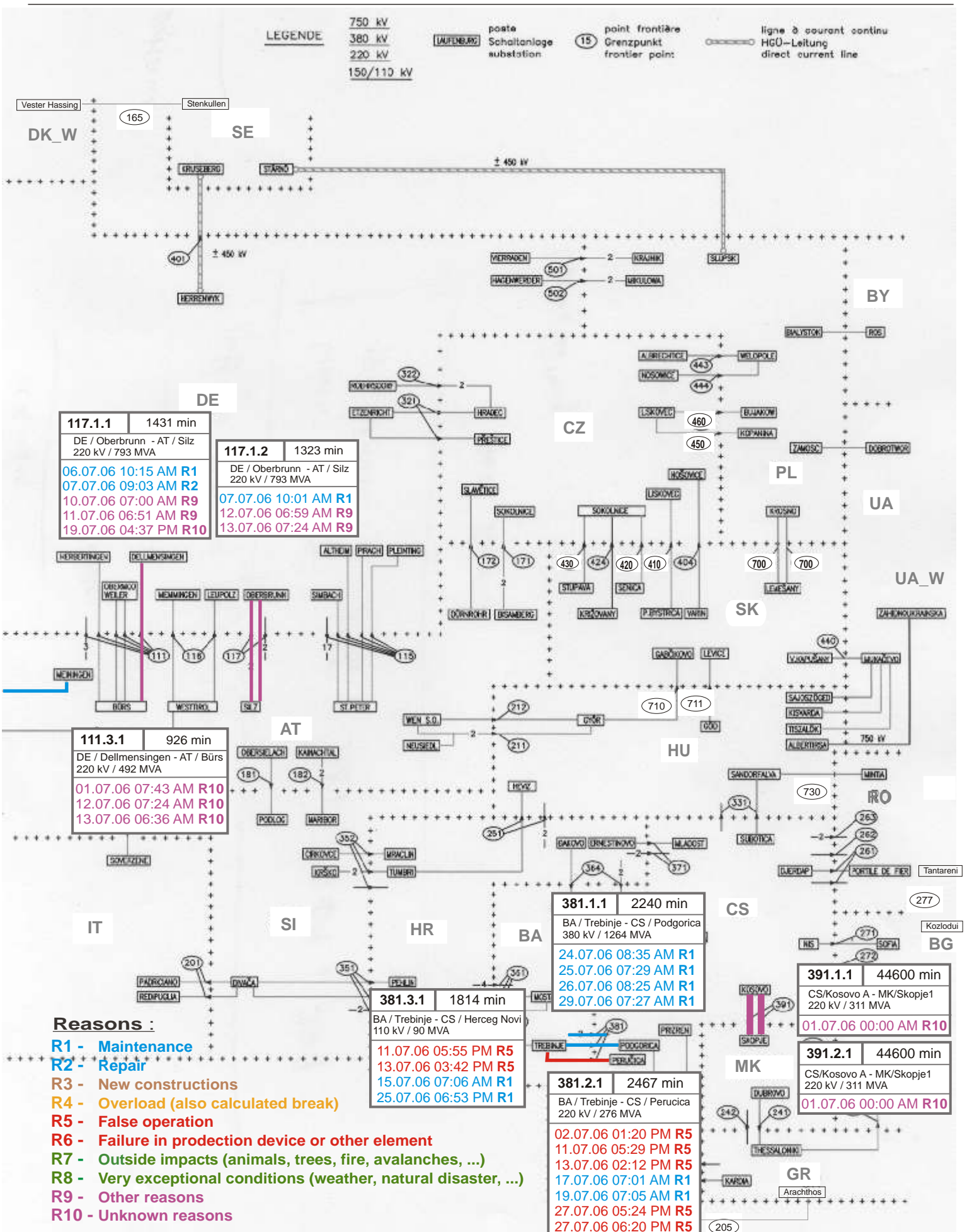
**Sum of load flows in MW:**

**UCTE = 30712 MW**

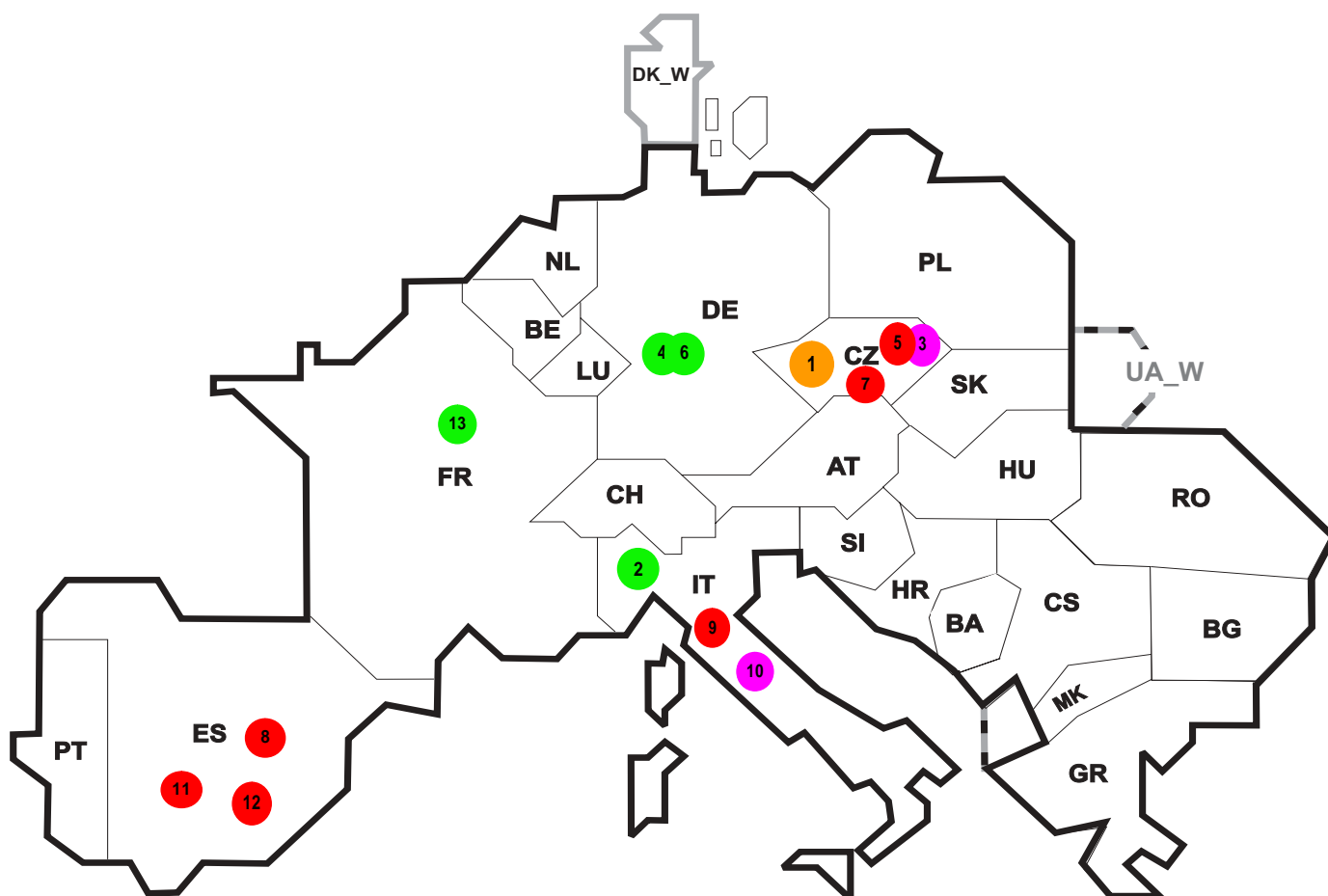
**Total = 35620 MW**

I = Import balance  
E = Export balance









Reasons:

**R4** Overload (also calculated break)

**R5** False operation

**R6** Failure in protection device or other element

**R7** Outside impacts (animals, trees, fire, avalanches, ...)  
(animals, trees, fire, avalanches, ...)

**R8** Very exceptional conditions  
(weather, natural disaster, ...)

**R9** Other reasons

**R10** Unknown reasons

No	Country	Substation	Reason	Energy not supplied [ MWh ]	Total loss of power [ MW ]	Restoration time [ min ]	Equivalent time of interruption <sup>1</sup>
1	CZ	Cechy Stred	R4	3350	3000	242	27,40
2	IT	Priolo Gargallo	R8	784	244	184	1,24
3	CZ	Krasikov	R9	22	0	17	0,18
4	DE	Gersteinw erk	R8	187	350	32	0,18
5	CZ	Krasikov	R6	19	0	16	0,16
6	DE	Gersteinw erk	R8	160	300	32	0,15
7	CZ	Sokolnice	R6	11	28	5	0,09
8	ES	Sabon	R6	44	155	17	0,09
9	IT	Villavalle	R5	43	124	21	0,07
10	IT	Nocera	R9	39	15	156	0,06
11	ES	Castellbisbal	R6	26	198	8	0,05
12	ES	Fuencarral	R6	6	29	7	0,01
13	FR	Plaisance	R8	7	29	15	0,01

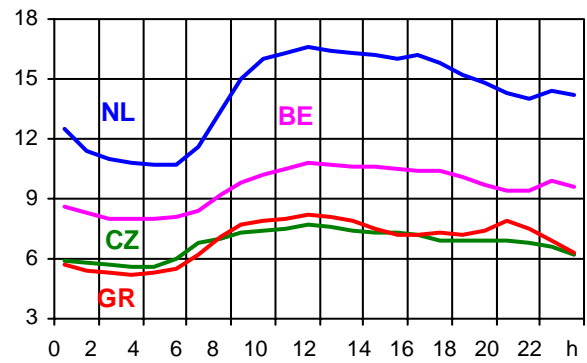
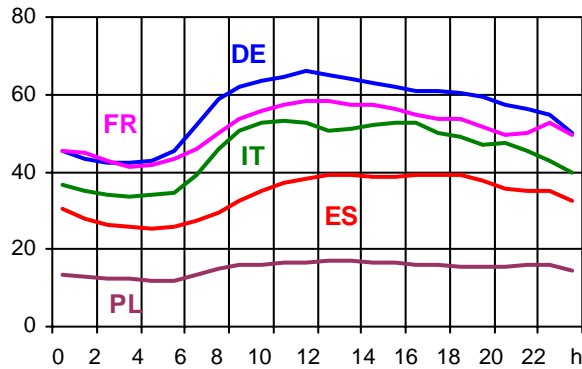
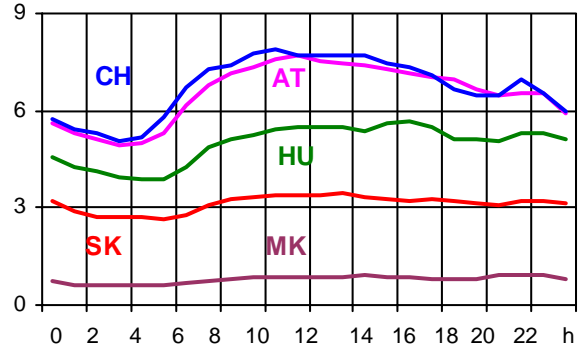
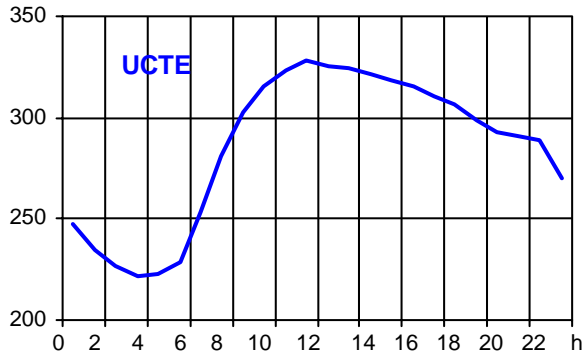
<sup>1</sup> ( year [in min] \* energy not supply ) / consumption last 12 months

Control area	Export Programs	Import Programs	Export Programs at 03:00	Import Programs at 03:00	Export Programs at 11:00	Import Programs at 11:00
AT	799739	764267	1903	823	219	1483
BA	291452	86122	196	136	259	75
BE	606851	1163208	928	1223	635	1574
BG	n.a.	n.a.	n.a.	n.a.	n.a.	n.a.
CH	2807654	1640714	2660	2671	4499	690
CS	416429	301951	610	287	648	444
CZ	1774035	441667	2533	718	2541	611
DE	2193222	2869929	3416	2649	4476	5851
ES	990329	615641	2204	310	1367	807
FR	7148974	2347314	7409	3300	8365	7258
GR	7805	513307	0	716	0	762
HR	131525	653513	113	815	176	934
HU	406802	910465	506	968	476	1276
IT	102639	3951017	125	4388	293	3386
MK	91100	155700	165	109	197	225
NL	305188	2154112	501	2499	479	2886
PL	612429	148973	1000	130	1000	410
PT	158356	686484	10	1510	448	748
RO	331751	104032	256	128	550	151
SI	583194	532081	712	802	770	593
SK	500954	354159	602	390	619	697
DK_W	447308	404069	657	287	700	773
UA_W	249782	0	298	0	350	0

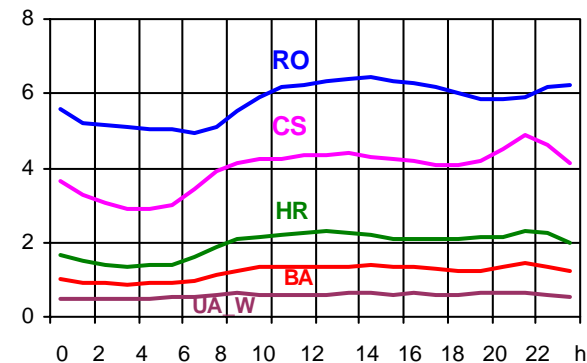
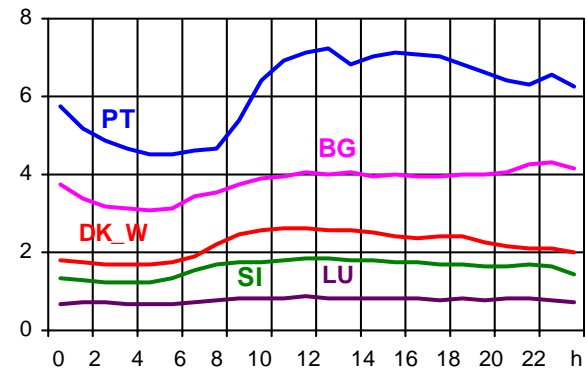
- Control areas can differ from national borders ( i.e. German block which includes parts of AT, LU and DK ).
- Values are calculated on an hourly base ( MWh ).
- This values are not the provisional values entered in the VULCANUS system, but the definitive values after an eventual correction during the actual date.
- Export Programs: Sum of all positive values of every hour of every border
- Import Programs: Sum of all negative values of every hour of every border
- Export Programs at 03:00: Sum of all positive values the third Wednesday from 02:00 to 03:00 a.m.
- Import Programs at 03:00: Sum of all negative values the third Wednesday from 02:00 to 03:00 a.m.
- Export Programs at 11:00: Sum of all positive values the third Wednesday from 10:00 to 11:00 a.m.
- Import Programs at 11:00: Sum of all negative values the third Wednesday from 10:00 to 11:00 a.m.

Consumption hourly load curves on 19.07.2006

Values in GW



	Highest load		Load representativity %	Parallel power <sup>2</sup> MW
	MW	var.% <sup>1</sup>		
AT	7728	5,0	100	10010
BA	1444	1,1	100	1518
BE <sup>3</sup>	10801	10,8	100	9465
BG	4328	2,3	100	4876
CH	7904	1,0	100	12015
CS	4908	5,2	100	4498
CZ	7670	5,5	100	9656
DE	72502	-3,3	91	71000
ES	40279	2,9	98	37725
FR	58229	2,6	100	58689
GR	8152	-10,8	100	7305
HR	2328	4,8	100	1583
HU	5669	2,3	100	4691
IT	53165	0,7	100	49072
LU	865	-6,5	100	830
MK	955	2,9	100	839
NL	16566	17,9	100	13835
PL <sup>4</sup>	16877	8,5	100	20401
PT	7546	0,8	96	6630
RO	6426	6,4	100	6563
SI	1932	4,5	95	1915
SK	3430	8,4	100	3218
<b>UCTE</b>	<b>328383</b>	<b>2,3</b>		<b>336334</b>
DK_W	2616	4,8	100	2488
UA_W	654	4,0	100	964



<sup>1</sup> Variation as compared to corresponding month of the previous year  
<sup>2</sup> Power produced in parallel operation (including autoproduction)  
<sup>3</sup> The reported figures are best estimates based on actual measurements and extrapolations.  
<sup>4</sup> Average value of each hour



## Contact

Boulevard Saint-Michel, 15  
B-1040 Brussels – Belgium  
Tel +32 2 741 69 40 – Fax +32 2 741 69 49

[info@ucte.org](mailto:info@ucte.org)  
[www.ucte.org](http://www.ucte.org)