

UCTE



July 2005

Monthly provisional values
union for the co-ordination of transmission of electricity

Table of contents ¹		Page
1	Electricity supply situation of the countries	2
2	Physical energy flows	3
3	Monthly consumption	4
4	Monthly consumption variation	6
5	Consumption of the last 12 months	8
6	Variation of the last 12 months' consumption	9
7	Load flows (night)	10
8	Load flows (day)	11
9	Unavailability of international tie lines (major events)	12
10	Network reliability (major events)	14
11	Scheduled exchanges	15
12	Load on the 3 rd Wednesday	16

¹ Monthly provisional values from the UCTE database as of 07 November 2005

All values are calculated to represent 100% of the national values

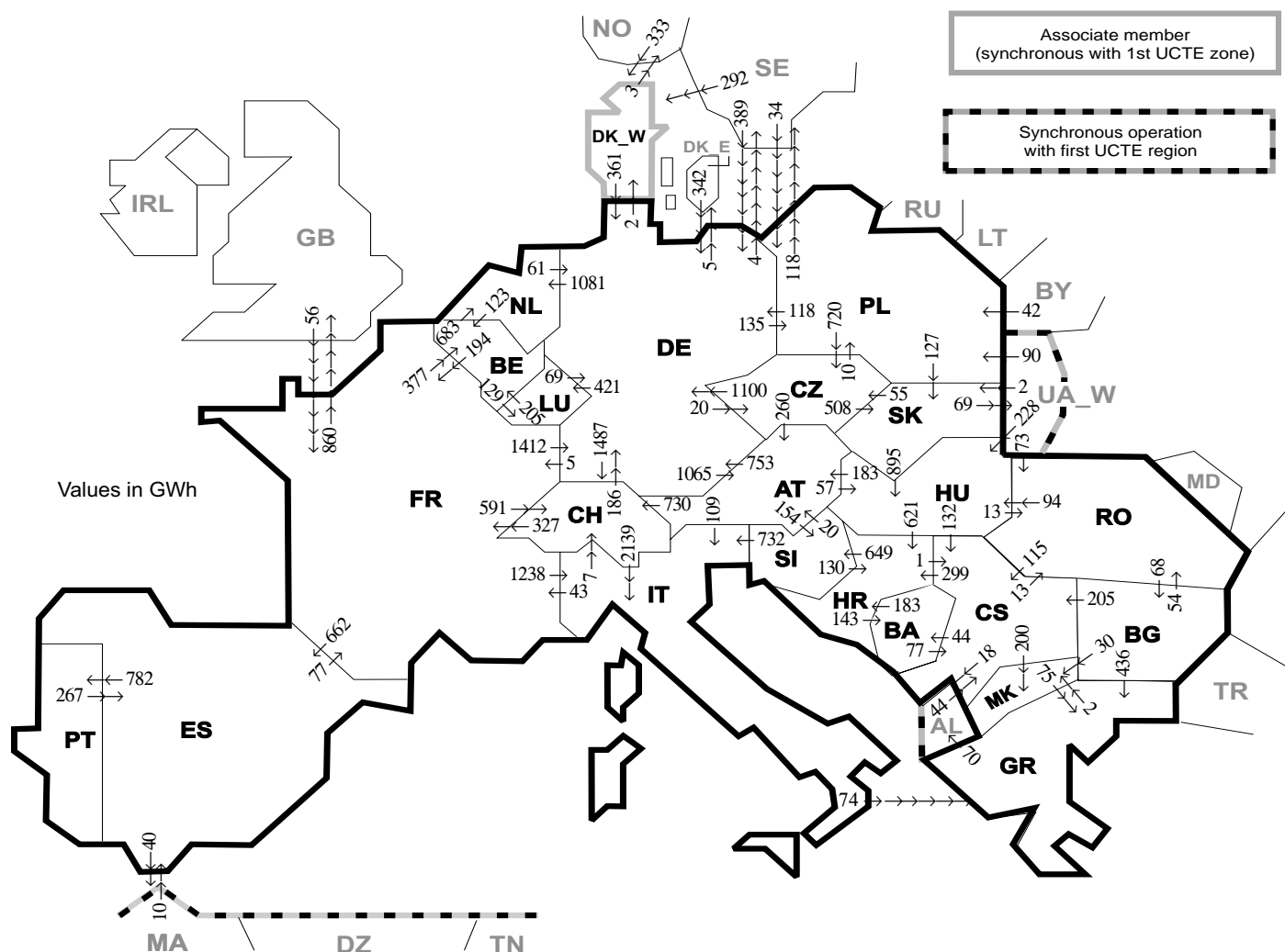
Countries	Net production in GWh							Exchange balance in GWh	Pump in GWh	Consumption in GWh			
	Therm. nuclear	Fossil fuel	Hydro prod	Other renew.	Of which wind	Not identify	Total			monthly	var. [%]	last 12 months	var. [%]
AT	0	1459	3737	0	0	522	5718	-282	373	5063	-4,2	63807	-1,3
BA	0	583	347	0	0	0	930	-89	0	841	4,6	11040	-2,5
BE	4093	2557	117	118	8	0	6885 ¹	-300	143	6442	-2,5	88395	1,1
BG	1141	1925	292	0	0	0	3358	-663	43	2652	4,5	35353	-0,9
CH	1334	178	3340	75	0	0	4927 ¹	175	401	4701	5,7	61922	3,4
CS	0	1876	991	0	0	0	2867 ¹	0	57	2810	-0,6	41313	0,3
CZ	2087	3161	247	4	2	0	5499 ¹	-1083	65	4351	3,1	62040	1,9
DE	11423	28033	2189	2404	1525	0	44049 ¹	566	810	43805	0,6	556511	1,6
ES	3922	14298	1884	1957	1625	0	22061 ¹	18	721	21358	-2,9	253448	2,6
FR	32129	3072	4139	300	43	0	39640	-4579	501	34560	-0,5	479334	1,1
GR	0	4283	454	78	70	0	4815 ¹	511	80	5246	1,7	52233	0,8
HR	0	500	404	1	0	0	905 ¹	432	13	1324	4,3	16254	2,9
HU	1284	1505	23	0	0	0	2812 ¹	325	0	3137	1,9	38445	0,5
IT	0	22102	4094	556	151	0	26752 ¹	4098	702	30148	2,5	327345	1,8
LU	0	271	72	8	4	0	351	276	97	530	-2,0	6178	-2,2
MK	0	339	77	0	0	0	416 ¹	157	0	573	11,7	7786	6,3
NL	331	6942	0	431	108	0	7704 ¹	1580	0	9284	6,5	112848	1,9
PL	0	10511	260	0	0	0	10771 ¹	-773	188	9810	-0,5	129497	-3,5
PT	0	3121	265	290	131	0	3676 ¹	527	49	4154	3,1	48823	3,2
RO	440	1656	1932	0	0	0	4028 ¹	-125	0	3903	-3,4	52038	4,5
SI	492	311	338	0	0	0	1141	-86	0	1055	-6,8	13051	-1,4
SK	1408	292	427	0	0	181	2308 ¹	-381	5	1922	-1,8	26213	-1,1
UCTE	60084	108975	25629	6222	3667	703	201613¹	304	4248	197669	0,5	2483201	1,2
DK_W	0	958	1	336	226	0	1295 ¹	263	0	1558	4,8	21229	n.a.
UA_W ²	0	513	6	0	0	0	519 ¹	-235	0	284	-5,6	4440	2,8

¹ Including deliveries from industry

² UA_W represents the so-called Burshtyn Island synchronously interconnected with UCTE

All representativities of the national production and consumption values used to calculate values at a representativity of 100% as stated in the table above

Countries	AT	BA	BE	BG	CH	CS	CZ	DE	ES	FR	GR	HR	HU	IT	LU	MK	NL	PL	PT	RO	SI	SK	DK_W	UA_W ²
Production																								
Therm.nuclear	100	100	100	100	100	100	100	100	100	100	100	100	100	100	100	100	100	100	100	100	100	100	100	100
Fossil fuel	100	100	100	100	100	100	100	100	100	100	100	100	100	100	98	100	100	100	96	100	100	100	100	100
Hydro prod	100	100	100	100	100	100	100	100	100	100	100	100	100	100	99	100	100	100	100	100	100	100	100	100
Other renew.	n.a.	100	100	100	100	100	100	100	100	100	100	100	n.a.	100	99	100	100	n.a.	100	100	100	100	100	100
Not identify	n.a.	100	100	100	100	100	100	100	100	100	100	100	n.a.	100	n.a.	100	100	n.a.	100	100	100	100	100	100
Consumption	100	100	100	100	100	100	100	100	98	100	100	100	100	100	99	100	100	100	97	100	95	100	100	100



Exporting countries	Importing countries																				Sum export						
	AT	BA	BE	BG	CH	CS	CZ	DE	ES	FR	GR	HR	HU	IT	LU	MK	NL	PL	PT	RO		SI	SK	DK_W	UA_W ²	Other III ¹	
AT	-	-	-	-	730	-	0	753	-	-	-	-	57	109	-	-	-	-	-	-	-	154	-	-	-	-	1803
BA	-	-	-	-	-	77	-	-	-	-	-	183	-	-	-	-	-	-	-	-	-	-	-	-	-	-	260
BE	-	-	-	-	-	-	-	-	-	194	-	-	-	-	129	-	683	-	-	-	-	-	-	-	-	-	1006
BG	-	-	-	-	-	205	-	-	-	-	436	-	-	-	-	30	-	-	-	54	-	-	-	-	-	0	725
CH	0	-	-	-	-	-	-	186	-	327	-	-	-	2139	-	-	-	-	-	-	-	-	-	-	-	-	2652
CS	-	44	-	0	-	-	-	-	-	-	-	-	299	0	-	200	-	-	-	13	-	-	-	-	-	18	574
CZ	260	-	-	-	-	-	-	1100	-	-	-	-	-	-	-	-	-	10	-	-	-	508	-	-	-	-	1878
DE	1065	-	-	-	1487	-	20	-	-	-	5	-	-	-	421	-	1081	135	-	-	-	-	2	-	-	9	4225
ES	-	-	-	-	-	-	-	-	-	77	-	-	-	-	-	-	-	-	782	-	-	-	-	-	-	40	899
FR	-	-	377	-	591	-	-	1412	662	-	-	-	-	1238	-	-	-	-	-	-	-	-	-	-	-	860	5140
GR	-	-	-	0	-	-	-	-	-	-	-	-	-	0	2	-	-	-	-	-	-	-	-	-	-	70	72
HR	-	143	-	-	-	1	-	-	-	-	-	-	0	-	-	-	-	-	-	-	649	-	-	-	-	-	793
HU	183	-	-	-	-	132	-	-	-	-	-	-	621	-	-	-	-	-	-	13	0	-	0	-	-	-	949
IT	0	-	-	-	7	-	-	-	-	43	74	-	-	-	-	-	-	-	-	-	0	-	-	-	-	-	124
LU	-	-	205	-	-	-	-	69	-	-	-	-	-	-	-	-	-	-	-	-	-	-	-	-	-	-	274
MK	-	-	-	0	-	0	-	-	-	-	-	75	-	-	-	-	-	-	-	-	-	-	-	-	-	-	75
NL	-	-	123	-	-	-	-	61	-	-	-	-	-	-	-	-	-	-	-	-	-	-	-	-	-	-	184
PL	-	-	-	-	-	-	720	118	-	-	-	-	-	-	-	-	-	-	-	-	-	-	-	0	118	1083	
PT	-	-	-	-	-	-	-	-	267	-	-	-	-	-	-	-	-	-	-	-	-	-	-	-	-	-	267
RO	-	-	-	68	-	115	-	-	-	-	-	-	94	-	-	-	-	-	-	-	-	-	-	-	0	0	277
SI	20	-	-	-	-	-	-	-	-	-	-	-	-	-	-	-	-	-	-	-	-	-	-	-	-	-	882
SK	-	-	-	-	-	-	-	55	-	-	-	-	895	-	-	-	-	-	0	-	-	-	-	-	69	-	1019
DK_W	-	-	-	-	-	-	-	361	-	-	-	-	-	-	-	-	-	-	-	-	-	-	-	-	-	-	364
UA_W ²	-	-	-	-	-	-	-	-	-	-	-	-	228	-	-	-	-	90	-	73	-	2	-	-	-	-	393
Other III ¹	-	-	-	0	44	-	731	10	56	0	-	-	-	-	-	-	-	76	-	0	-	-	625	-	-	-	1542
Sum imp	1528	187	705	68	2815	574	795	4791	939	702	585	1233	1274	4218	550	232	1764	311	782	153	803	637	627	69	1118	27460	

Sum of physical energy flows between UCTE countries = 23975GWh Total physical energy flows = 27460GWh

¹ Other III: Albania, Belarus, Denmark East, Great Britain, Morocco, Republic of Moldavia, Norway, Sweden and Republic of Turkey

² UA_W represents the so-called Burshtyn Island synchronously interconnected with UCTE

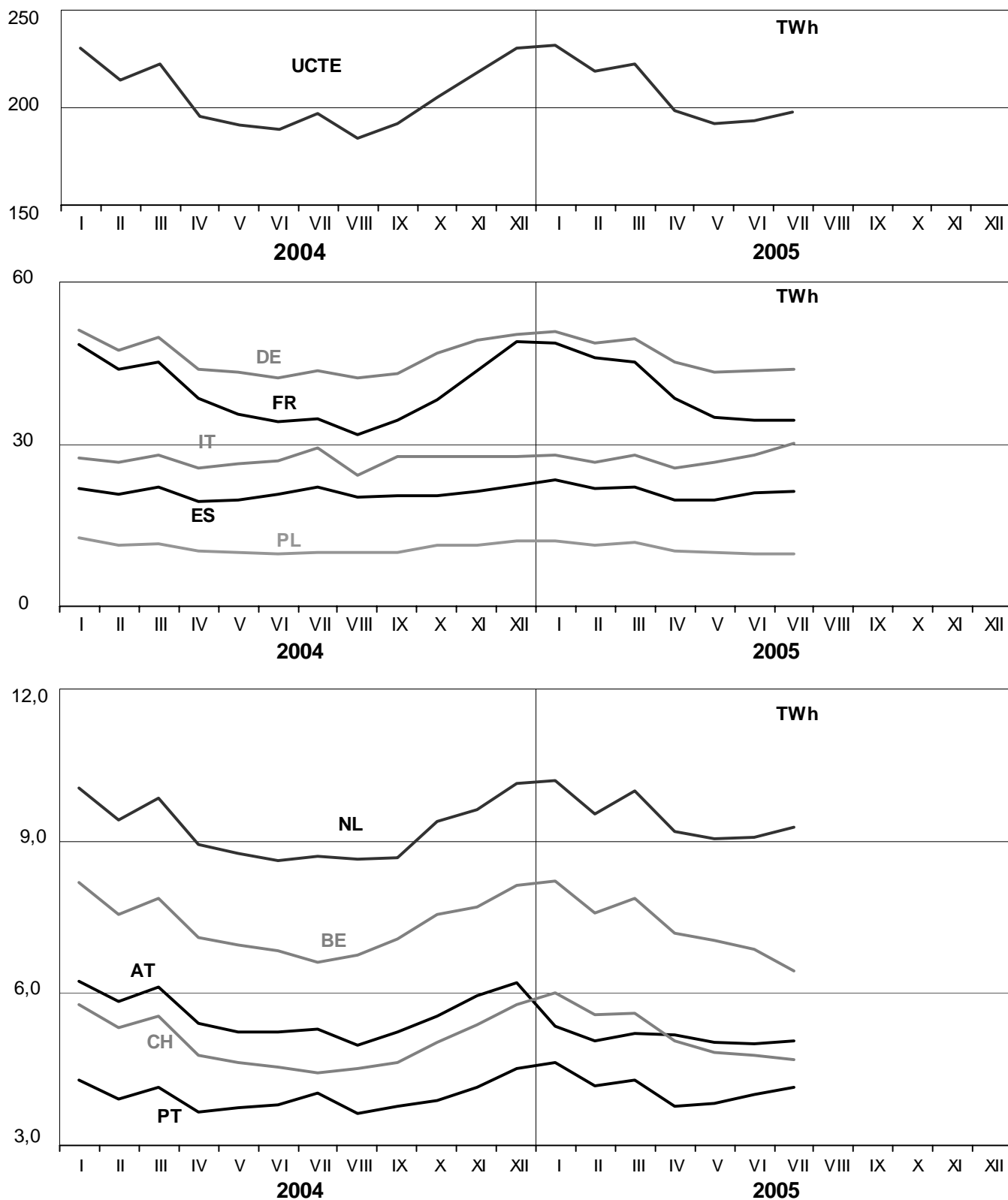
These physical energy flows were measured on the cross-frontier transmission lines (≤ 110 kV) listed in table 9 of the Statistical Yearbook. These values may differ from the official statistics and the exchange balances in chapter 1.

3

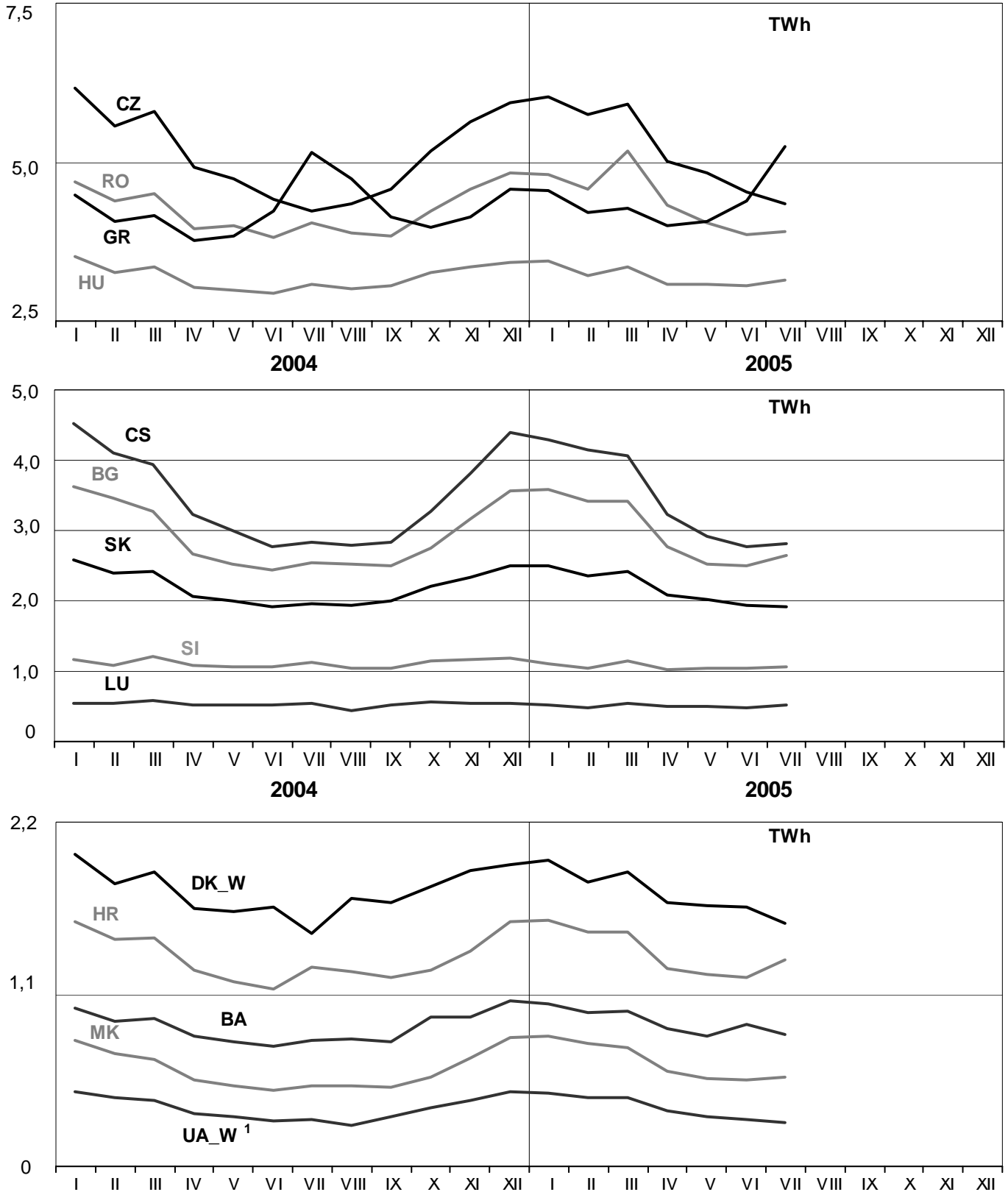
Monthly consumption

July 2005

All values are calculated to represent 100% of the national values



All values are calculated to represent 100% of the national values



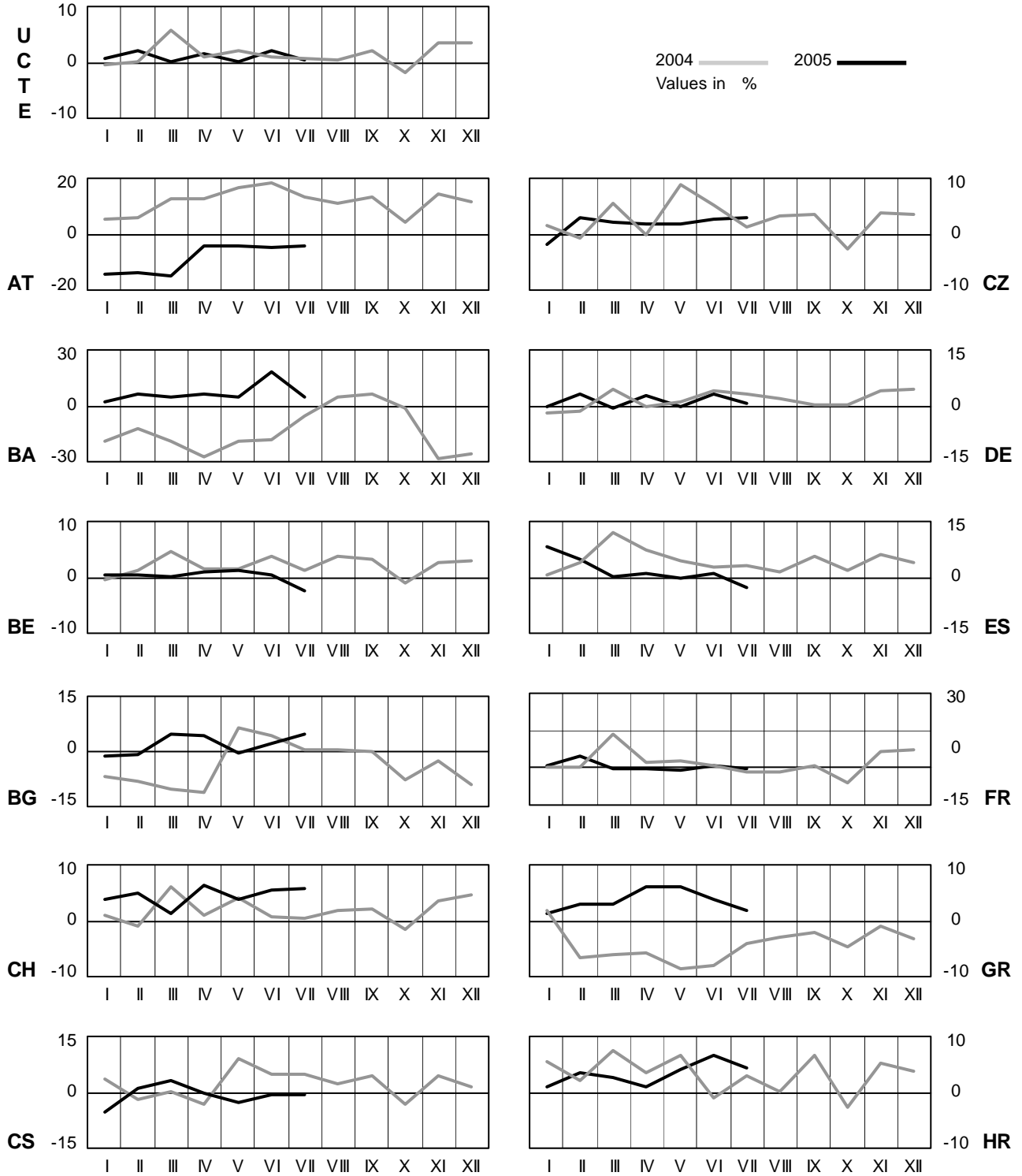
¹ UA_W represents the so-called Burshtyn Island synchronously interconnected with UCTE

4

Monthly consumption variation

July 2005

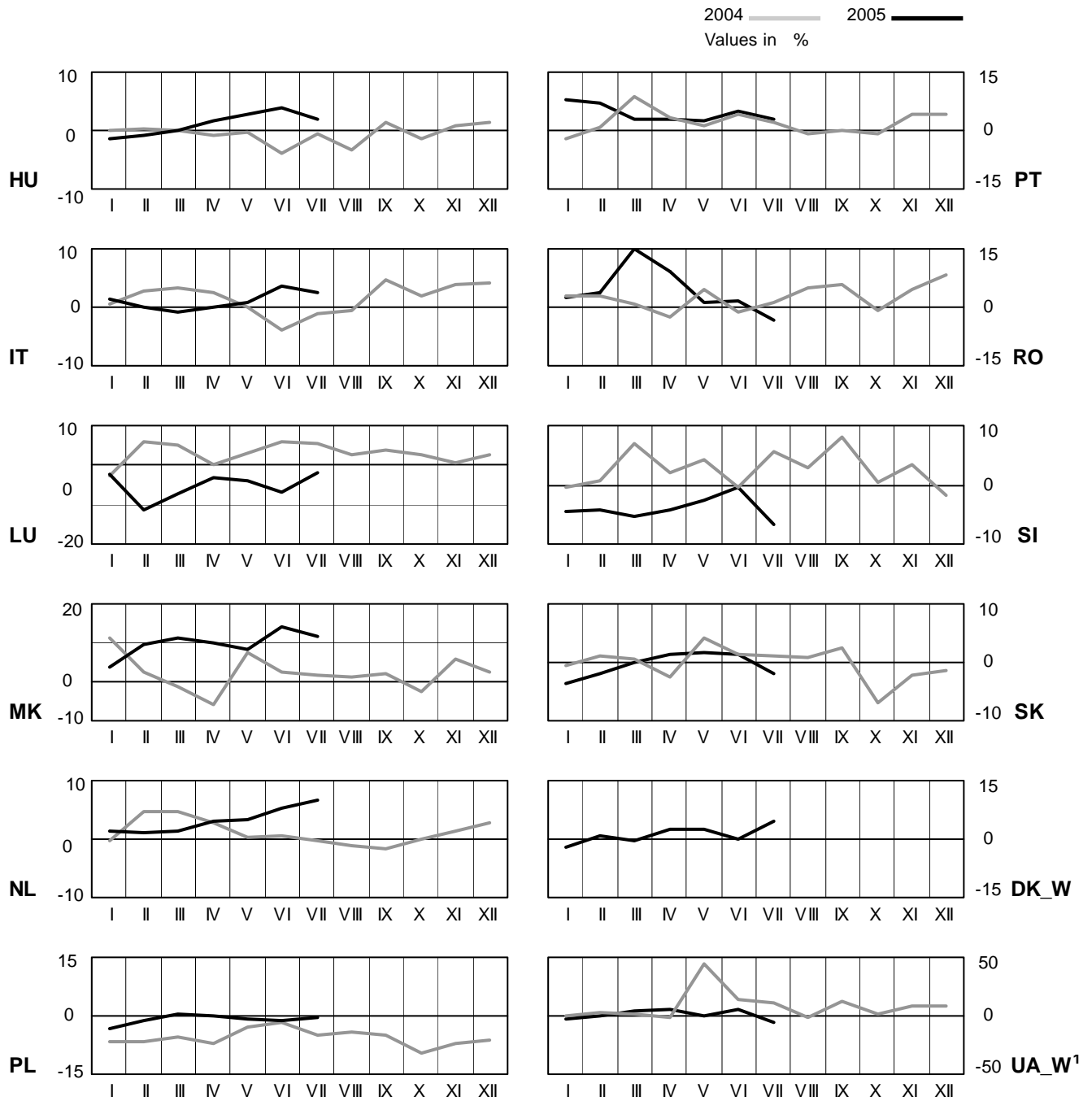
All values are calculated to represent 100% of the national values



4 Monthly consumption variation

July 2005

All values are calculated to represent 100% of the national values



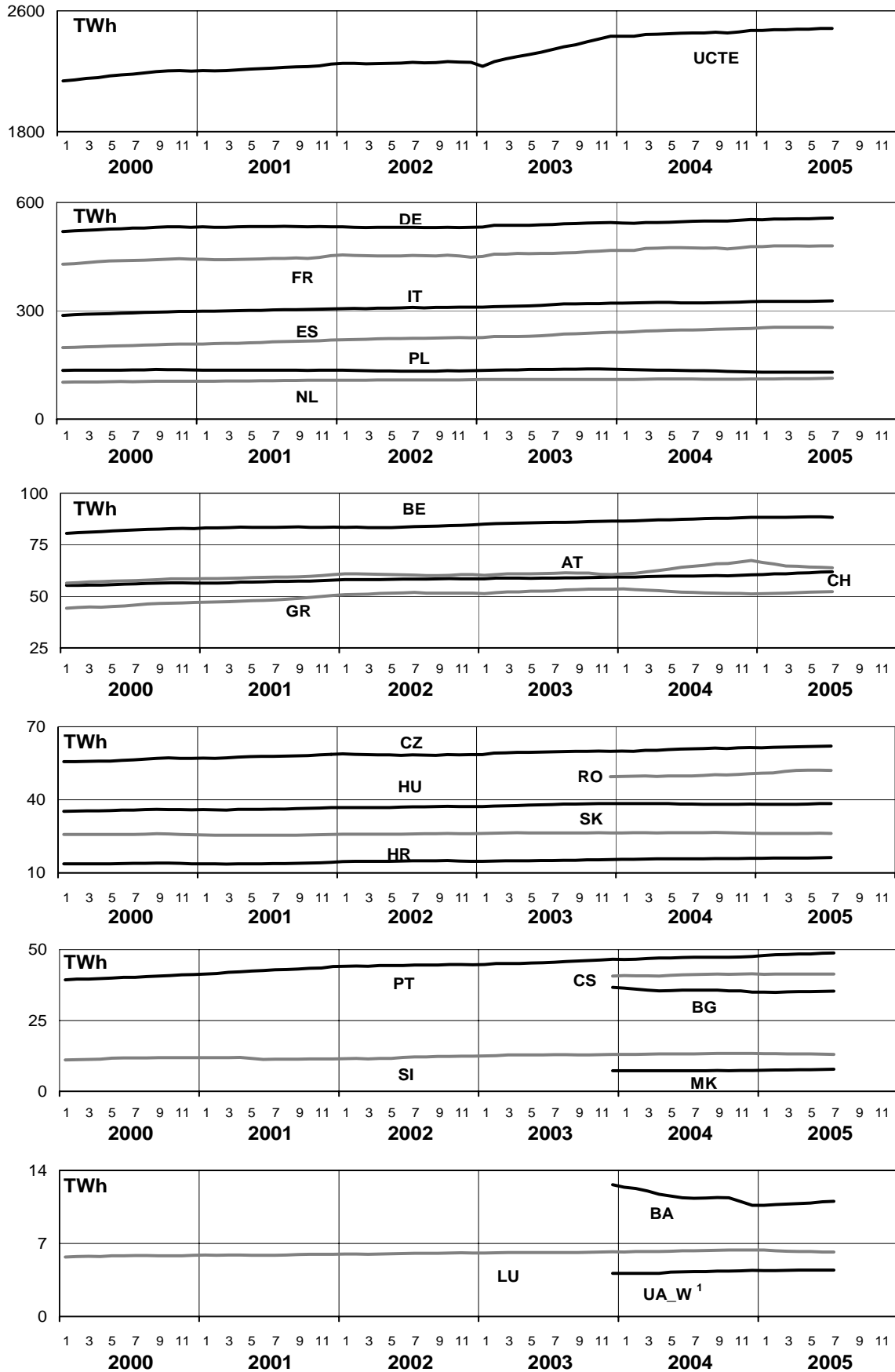
¹ UA_W represents the so-called Burshtyn Island synchronously interconnected with UCTE

5

Consumption of the last 12 months

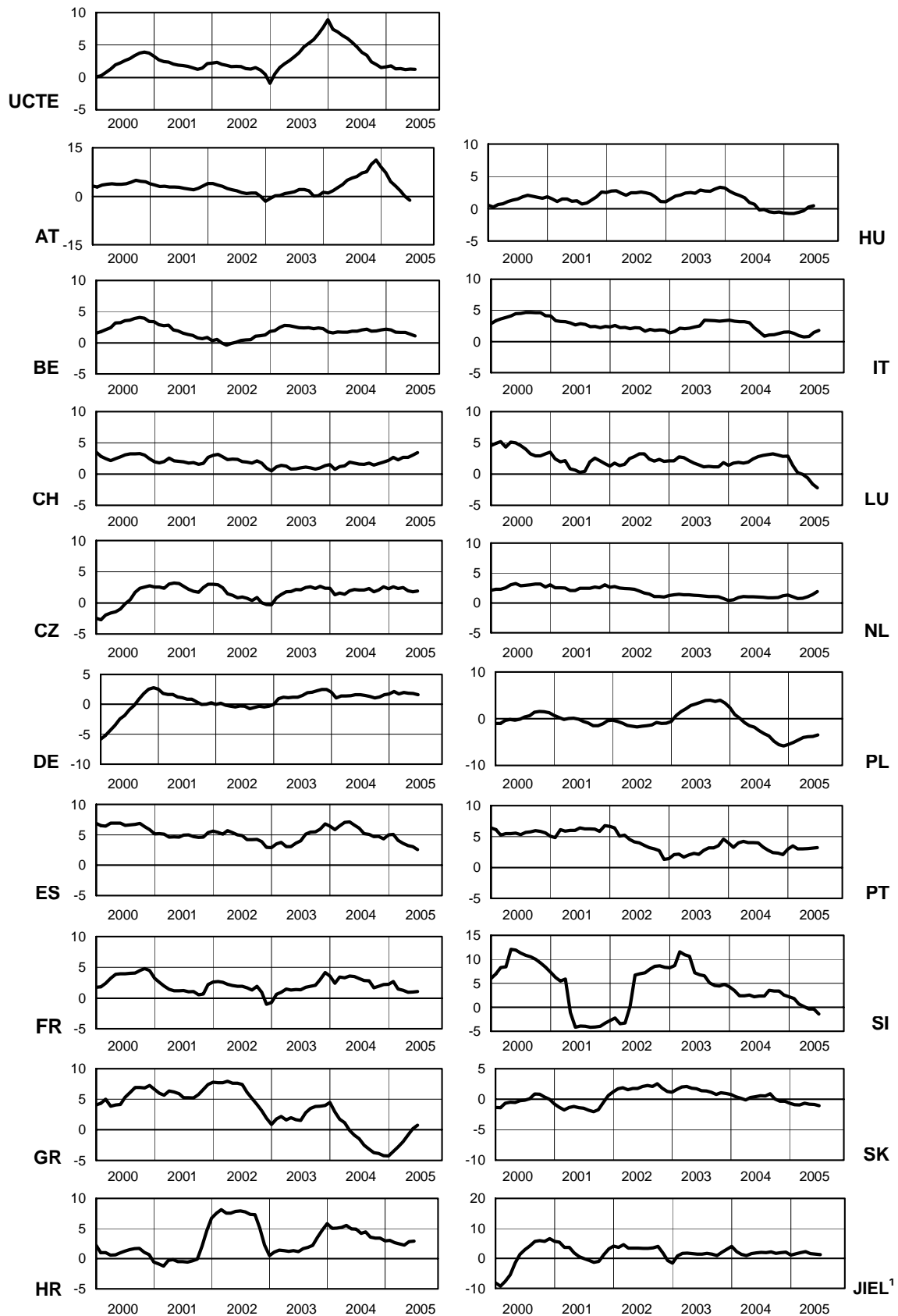
July 2005

All values are calculated to represent 100% of the national values

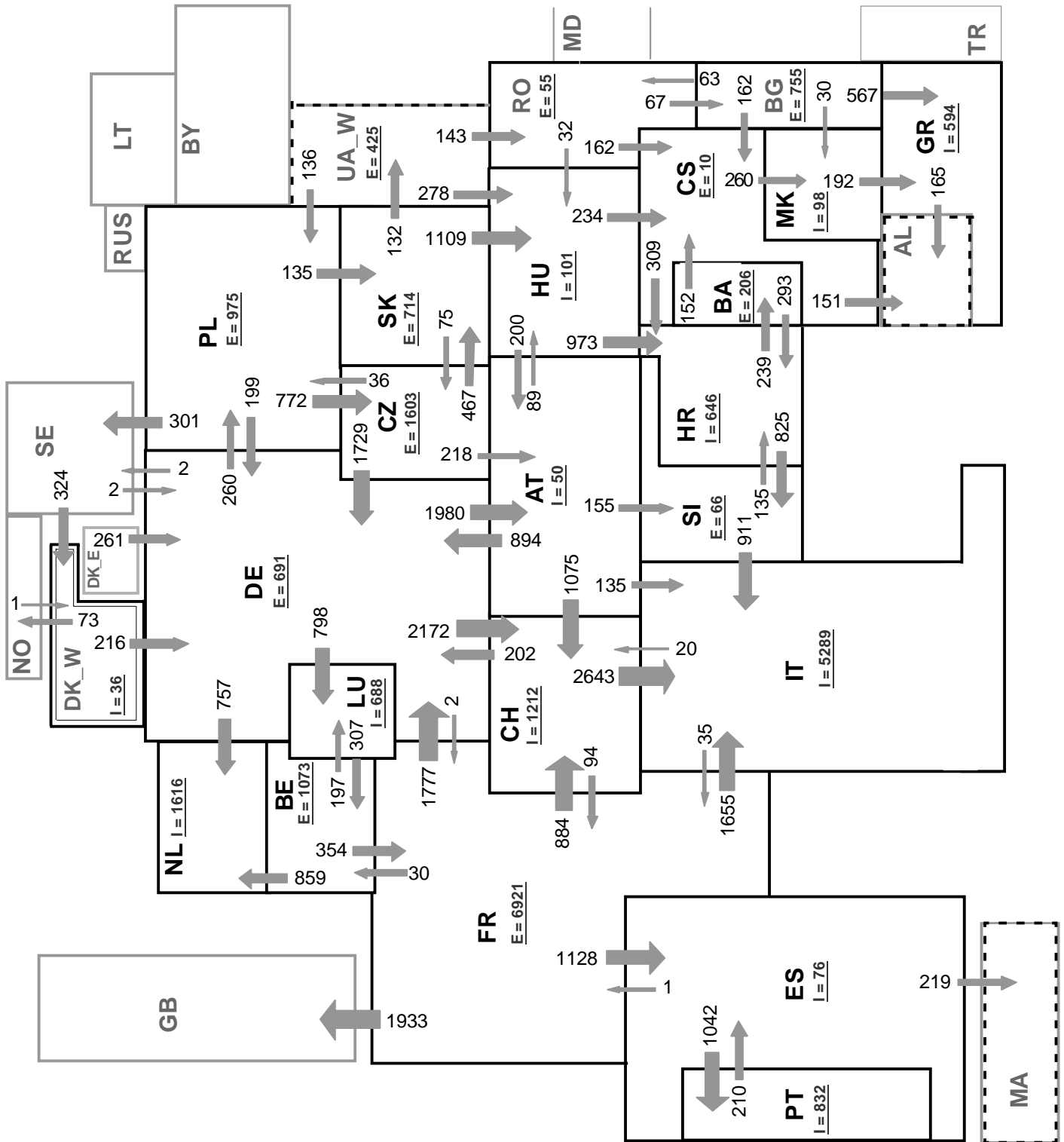


¹ UA_W represents the so-called Burshtyn Island synchronously interconnected with UCTE

All values are calculated to represent 100% of the national values



¹ JIEL = FRY + FYROM (Federal Republic of Yugoslavia and former Yugoslav Republic of Macedonia)



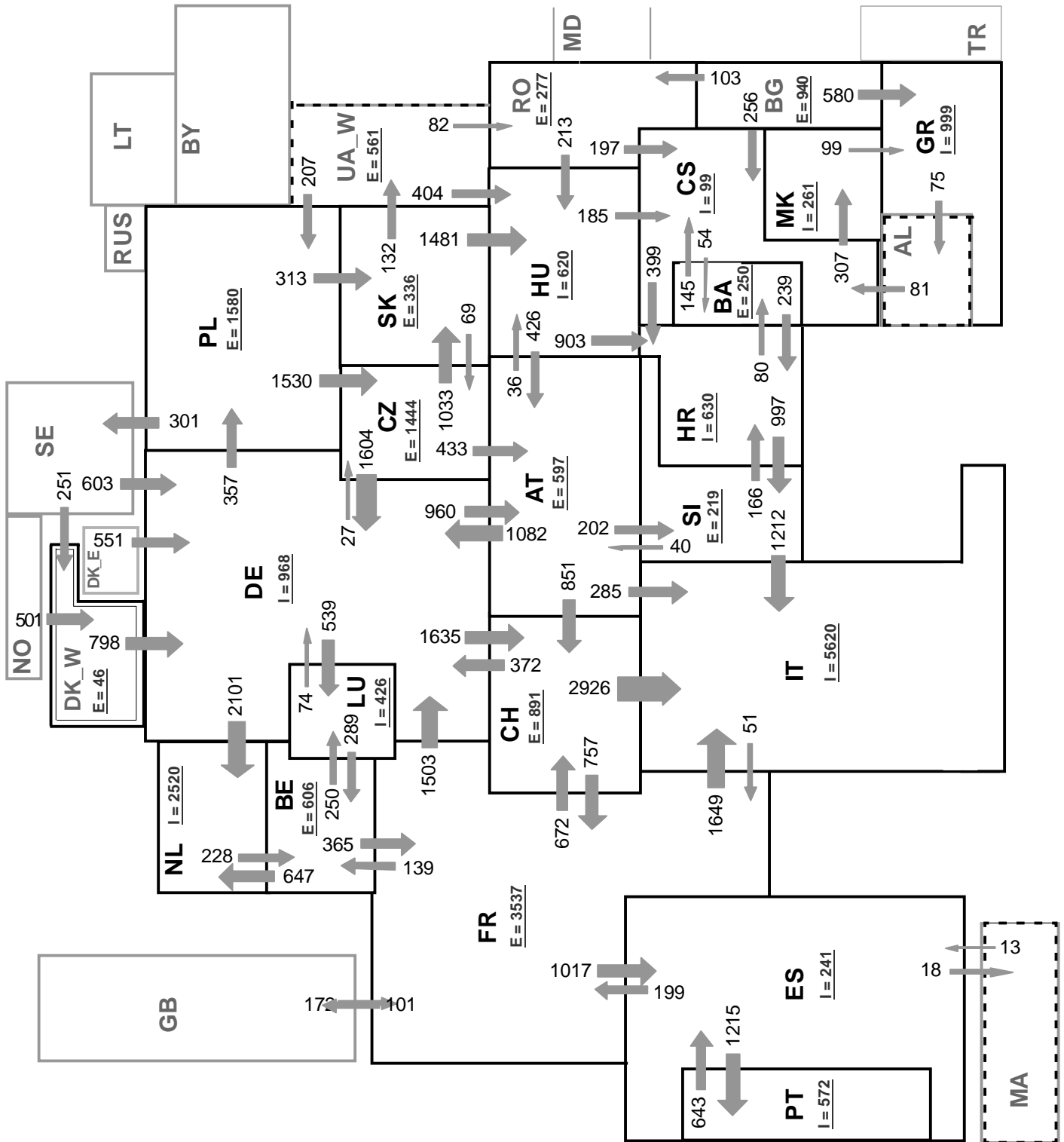
Associate member

Synchronous operation with first region

Sum of load flows in MW:

UCTE = 30301 MW Total = 34638 MW

* Central European Time (CET)
 I = Import balance
 E = Export balance



Associate member

Synchronous operation with first region

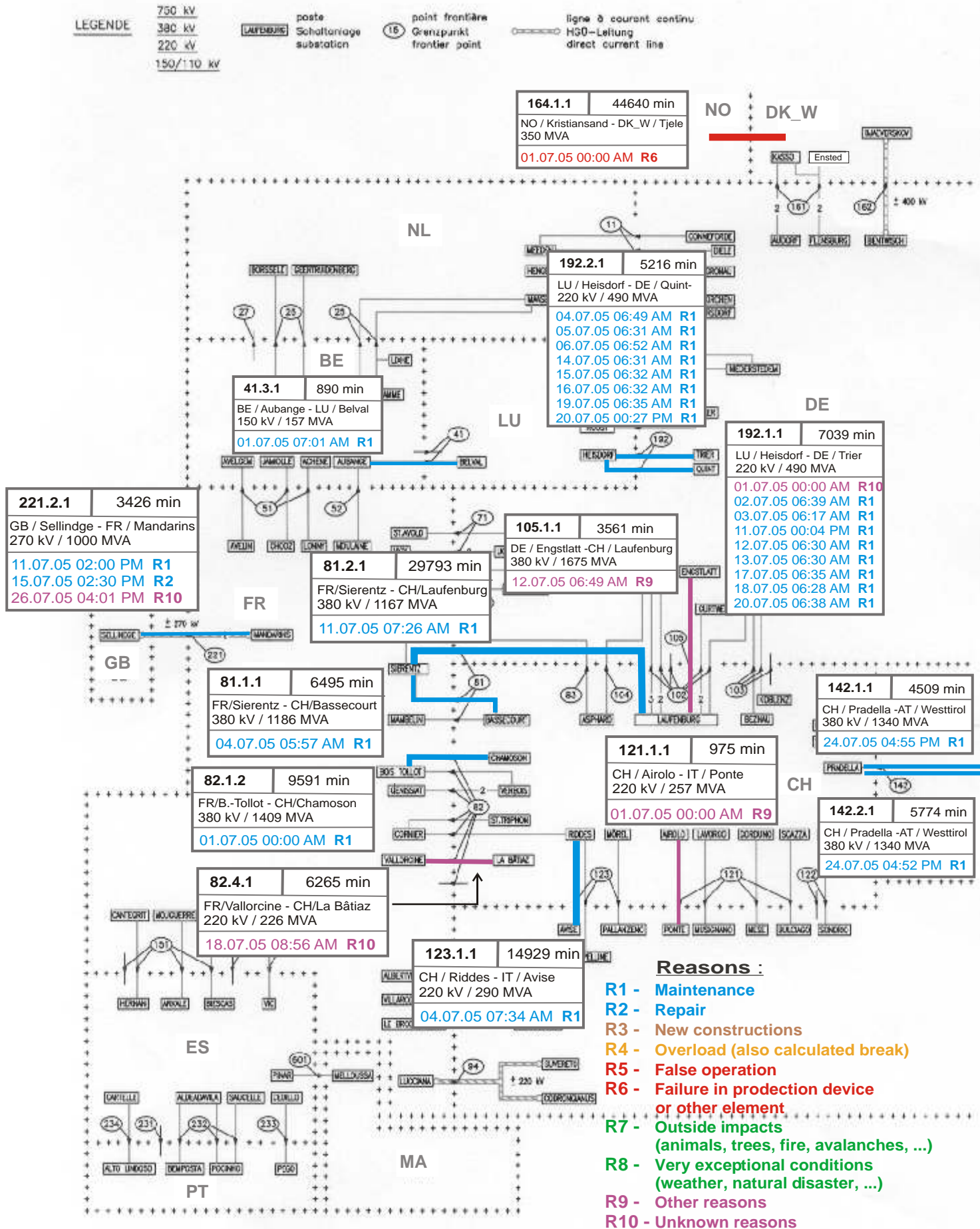
Sum of load flows in MW:

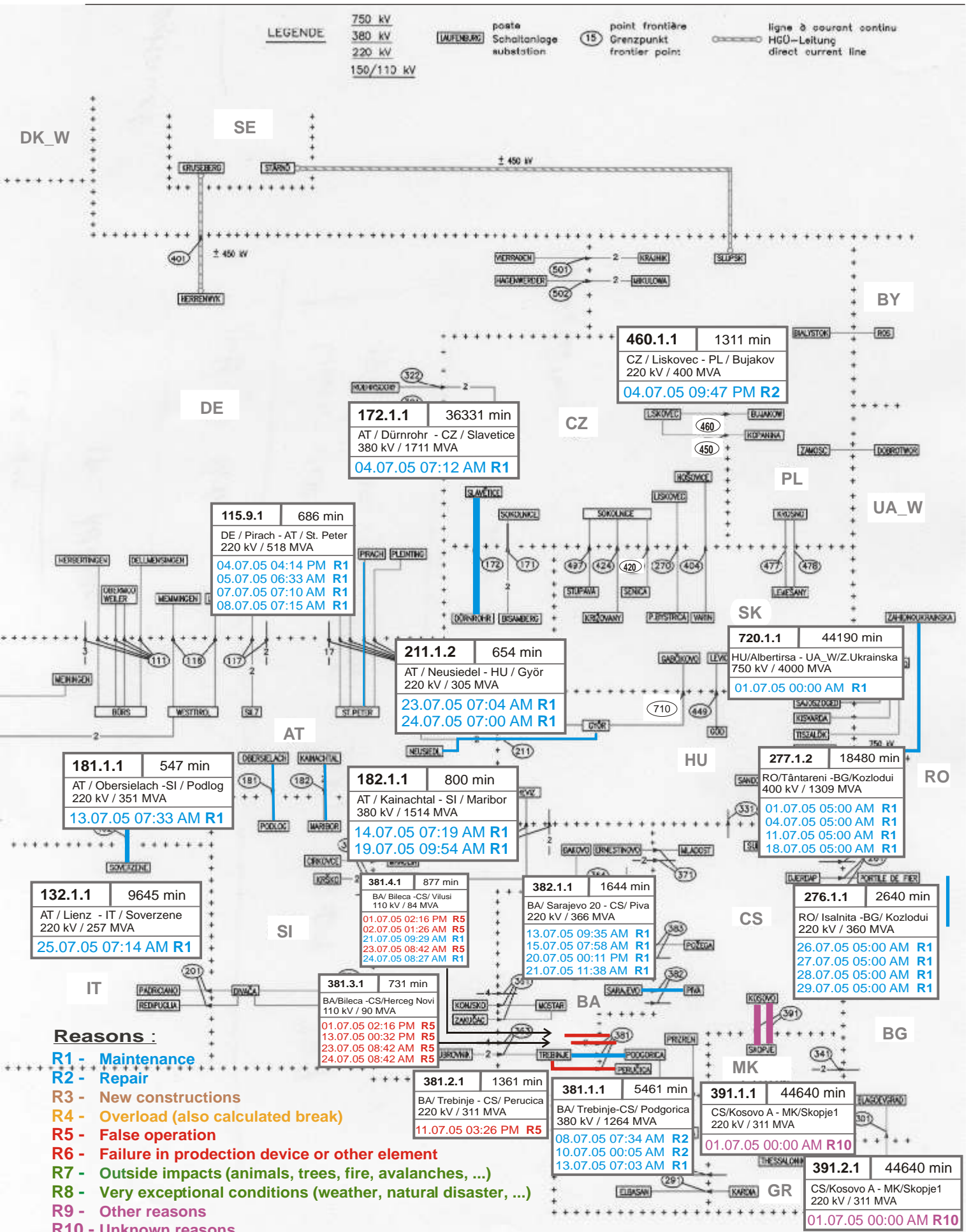
UCTE = 34641 MW Total = 38936 MW

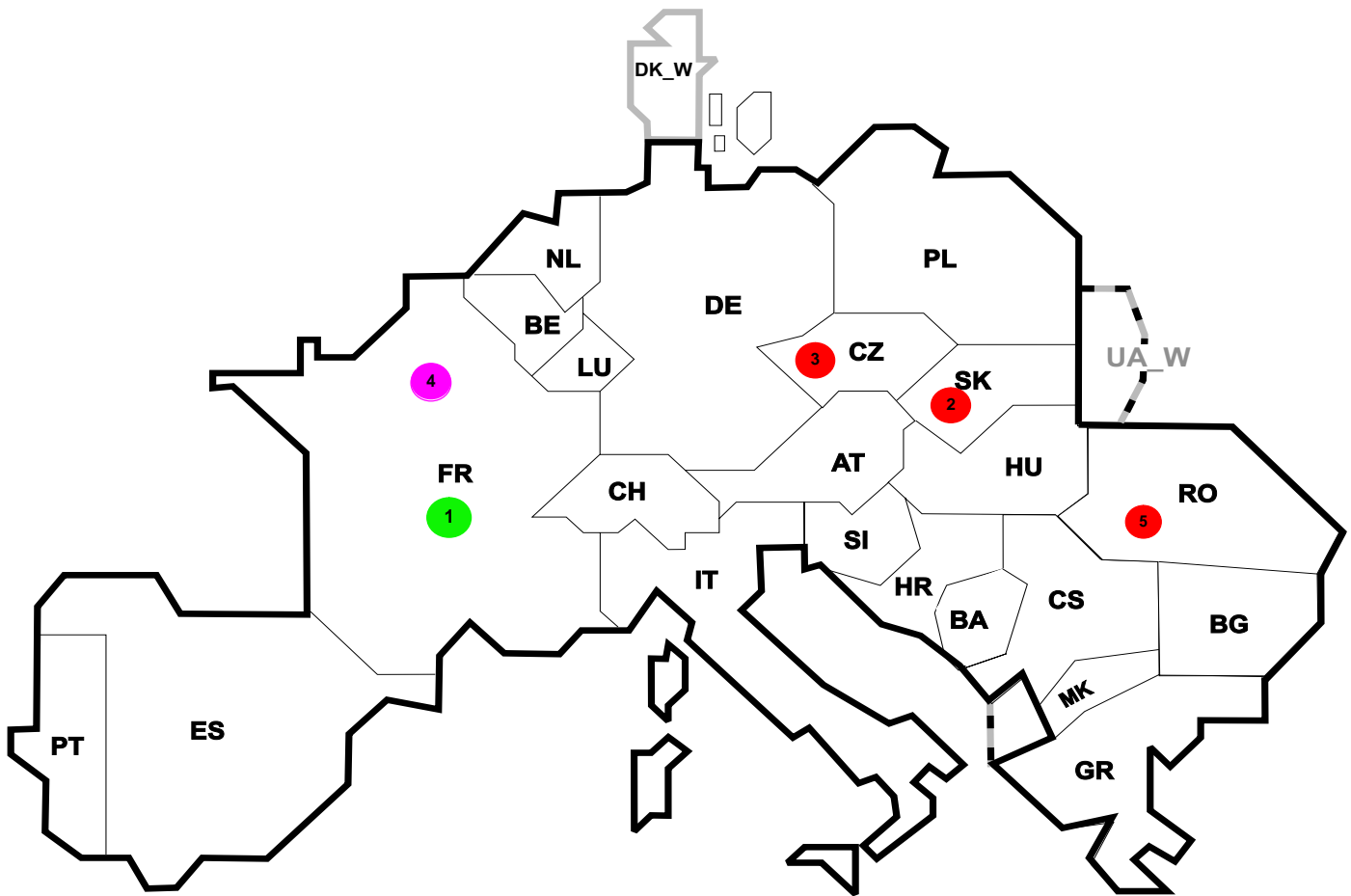
* Central European Time (CET)

I = Import balance

E = Export balance







Reasons:

R4 Overload (also calculated break)

R5 False operation

R6 Failure in protection device or other element

R7 Outside impacts (animals, trees, fire, avalanches, ...)
(animals, trees, fire, avalanches, ...)

R8 Very exceptional conditions
(weather, natural disaster, ...)

R9 Other reasons

R10 Unknown reasons

Nbr	Country	Substation	Reason	Energy not supplied [MWh]	Total loss of power [MW]	Restoration time [min]	Equivalent time of interruption ¹
1	FR	Villarodin	R8	36	8	275	0,04
2	SK	Krizovany	R6	33	160	47	0,66
3	CZ	Liskovec	R5	11	71	5	0,09
4	FR	Neully Sur Marne	R9	2	27	4	0,00
5	RO	Cernavoda	R6	0	706	3126	0,00

¹ (year [in min] * energy not supply) / consumption last 12 months

Control area	Export Programs	Import Programs	Export Programs at 03:00	Import Programs at 03:00	Export Programs at 11:00	Import Programs at 11:00
AT	738638	484631	183	748	401	858
BA	107142	29962	639	408	705	404
BE	705223	328839	1188	0	1191	561
BG	n.a.	n.a.	n.a.	n.a.	n.a.	n.a.
CH	2280028	24500151	2683	3917	3439	2575
CS	393614	391716	778	772	494	564
CZ	1802841	663072	2529	868	2627	1125
DE	3251817	2844824	3162	3181	4916	3982
ES	639729	658320	1057	1146	610	778
FR	7313106	2870137	9957	3045	8620	5167
GR	0	508997	0	584	0	992
HR	85110	524481	194	830	164	775
HU	486110	809857	893	995	600	1215
IT	124366	4216473	55	5344	452	6067
MK	3400	162300	166	231	25	234
NL	380514	1958097	855	2461	329	2817
PL	869545	157329	1094	244	1673	215
PT	42406	569604	0	843	0	599
RO	300300	175748	330	268	510	220
SI	589971	510186	836	777	842	644
SK	667085	240294	1081	317	768	372
DK_W	313360	617340	183	321	700	750
UA_W ¹	235289	0	293	0	350	0

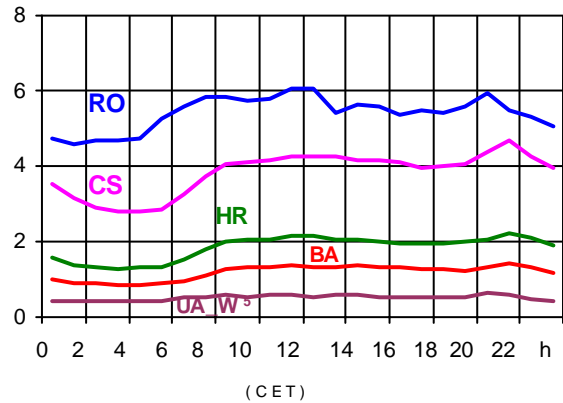
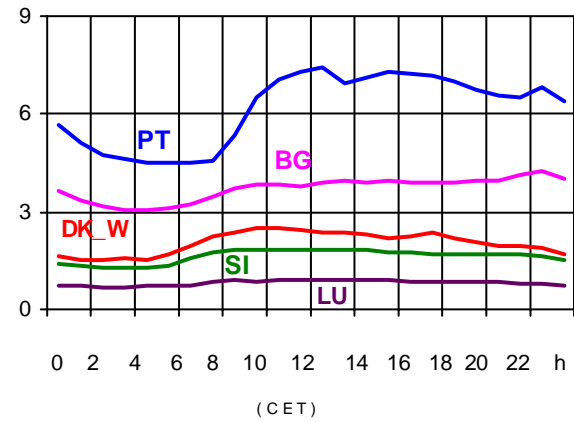
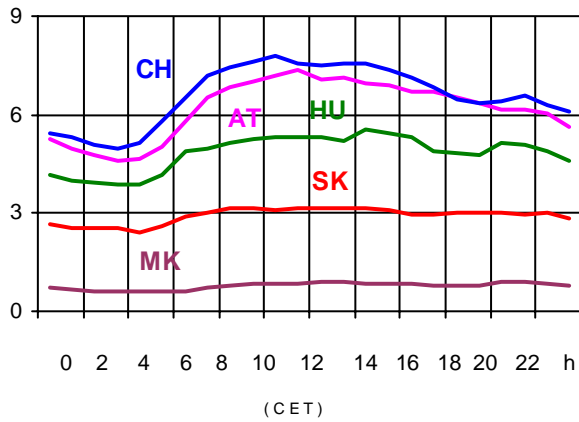
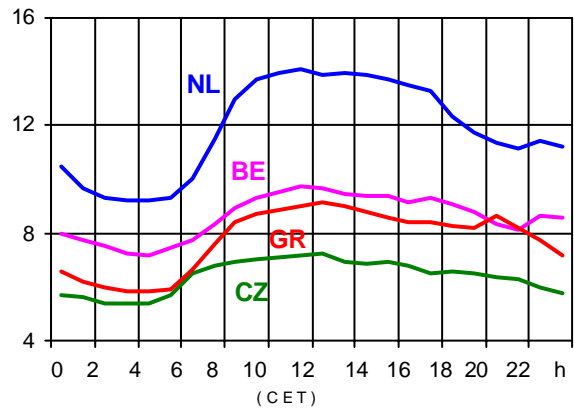
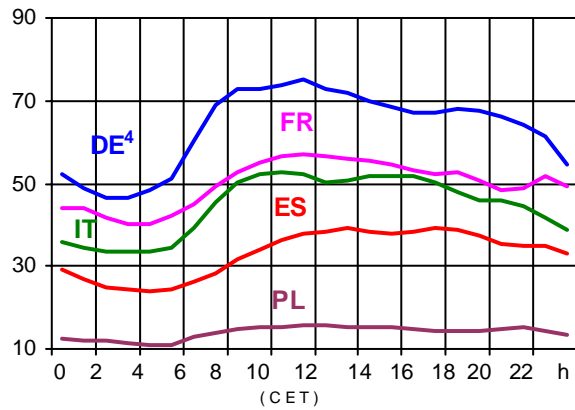
- Control areas can differ from national borders (i.e. German block which includes parts of AT, LU and DK).
- Values are calculated on an hourly base (MWh).
- This values are not the provisional values entered in the VULCANUS system, but the definitive values after an eventual correction during the actual date.
- Export Programs: Sum of all positive values of every hour of every border
- Import Programs: Sum of all negative values of every hour of every border
- Export Programs at 03:00: Sum of all positive values the third Wednesday from 02:00 to 03:00 a.m.
- Import Programs at 03:00: Sum of all negative values the third Wednesday from 02:00 to 03:00 a.m.
- Export Programs at 11:00: Sum of all positive values the third Wednesday from 10:00 to 11:00 a.m.
- Import Programs at 11:00: Sum of all negative values the third Wednesday from 10:00 to 11:00 a.m.

¹ UA_W represents the so-called Burshtyn Island synchronously interconnected with UCTE

All values are calculated to represent 100% of the national values

Consumption hourly load curves¹ on 20.07.2005

Values in GW



	Peak load MW	var.% ²	Load representativity ¹ %	Parallel power ³ MW
AT	7357	-18,3	100	7930
BA	1428	10,4	100	1557
BE	9747	15,8	100	10138
BG	4231	7,5	100	4745
CH	7801	-0,6	100	9357
CS	4665	-0,7	100	4080
CZ	7270	2,1	100	8659
DE ⁴	74945	-0,6	91	73800
ES	39126	4,1	98	35225
FR	56752	0,6	100	60329
GR	9140	7,4	100	7844
HR	2221	2,0	100	1616
HU	5539	-0,1	100	4714
IT	52820	0,9	100	45811
LU	925	6,2	99	910
MK	928	9,6	100	599
NL	14050	-5,7	100	11419
PL	15562	-1,8	100	17328
PT	7397	5,7	97	6250
RO	6041	-6,2	100	5785
SI	1848	0,6	95	1940
SK	3163	-1,1	100	3414
UCTE	328896	0,5		323450
DK_W	2497	0,6	100	2554
UA_W ⁵	629	2,6	100	919

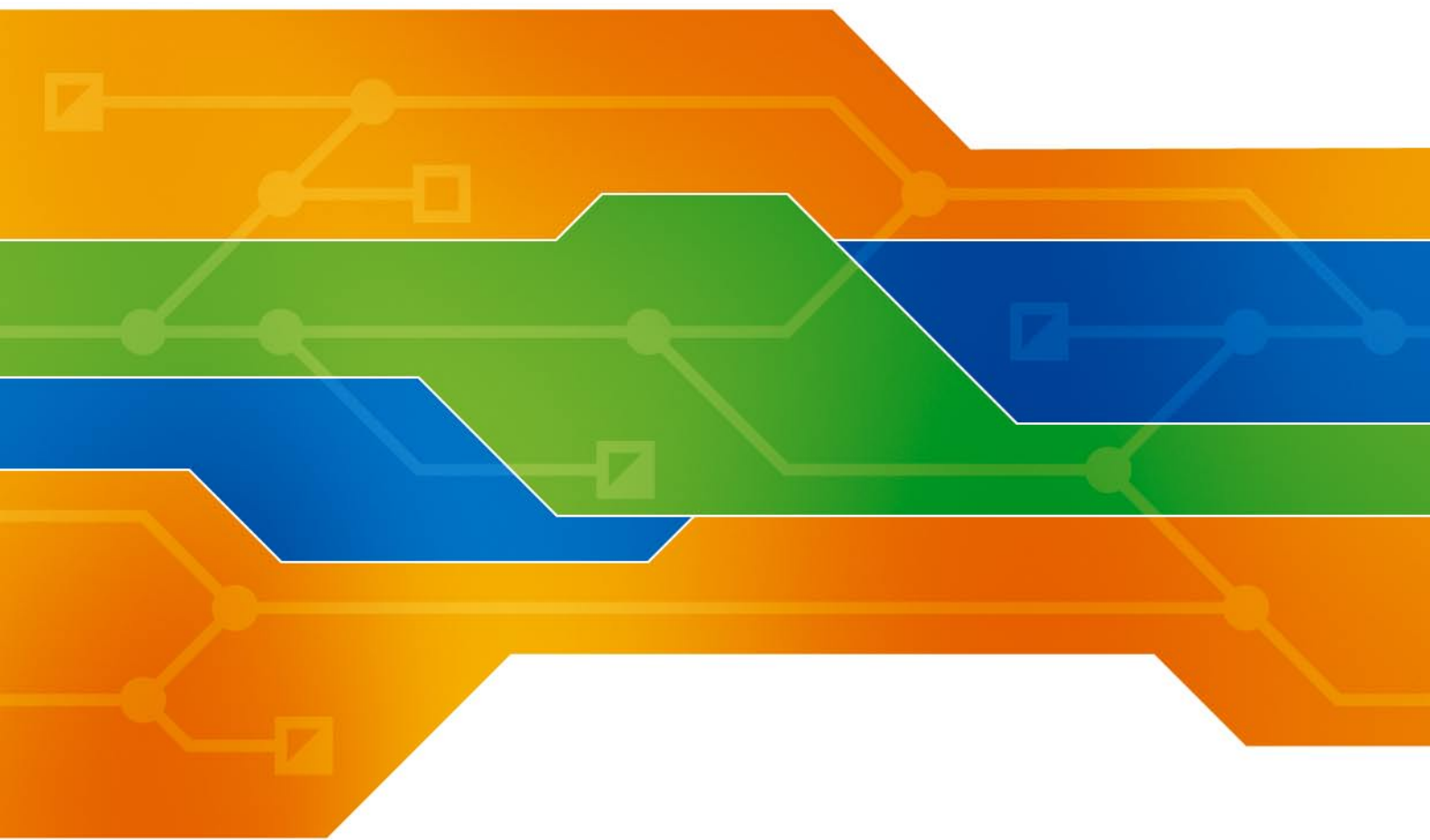
¹ Percentage as referred to total values in %

² Variation as compared to corresponding month of the previous year

³ Power produced in parallel operation (including autoproduction)

⁴ Values estimated on the basis of the vertical load. The vertical load is the total amount of the power flows out of the transmission network into distribution and large consumer networks.

⁵ UA_W represents the so-called Burshtyn Island synchronously interconnected with UCTE



Contact

Boulevard Saint-Michel, 15
B-1040 Brussels - Belgium
Tel +32 2 741 69 40 - Fax +32 2 741 69 49

info@ucte.org
www.ucte.org