

UCTE



May 2003

Monthly provisional values
union for the co-ordination of transmission of electricity

Table of contents ¹		Page
1	Electricity supply situation of the countries	2
2	Physical energy flows	3
3	Monthly consumption	4
4	Monthly consumption variation	5
5	Consumption of last 12 months	6
6	Variation of the last 12 months' consumption	7
7	Load flows (night)	8
8	Load flows (day)	9
9	Unavailability of international tie lines (major events)	10
10	Network reliability (major events)	12
11	Scheduled exchanges	13
12	Load on the 3 rd Wednesday	14

¹ Monthly provisional values as of UCTE database from 10 September 2003

Countries	Net production in GWh ¹				Exchange balance in GWh	Pump in GWh	Consumption in GWh ¹			
	Hy	Tn	Tc	Total			monthly	Δ ³ [%]	last 12 months	Δ ³ [%]
B	130	3444	2574	6148 ²	676	137	6687	0,9	84008	1,7
D	2032	11535	26680	40247 ²	579	597	40229	-0,2	503770	1,7
E	3676	4789	9112	17577 ²	134	266	17445	1,8	213158	1,9
F	5137	32487	2357	39981	-6067	688	33226	-0,9	440566	1,0
GR	333	0	3538	3871 ²	116	81	3906	6,9	48314	2,0
I	4572	0	18106	22678	4366	861	26183	1,5	313253	2,0
SLO	282	118	424	824	161	0	985	3,1	12149	9,9
HR	282	0	500	782 ²	331	9	1104	2,1	14943	1,2
BiH	406	0	444	850	121	0	971	n.a.	n.a.	n.a.
FYROM	133	0	303	436 ²	1	0	437	n.a.	n.a.	n.a.
SCG	942	0	1796	2738	-95	16	2627	n.a.	n.a.	n.a.
L	74	0	271	345	246	89	502	0,8	6070	-3,0
NL	0	336	6919	7255 ²	1497	0	8752	0,6	109017	2,8
A	3092	0	638	3730	277	144	3863	6,0	51262	0,8
P	1245	0	1922	3167 ²	279	36	3410	4,8	41526	2,4
CH	3681	2269	227	6177 ²	-1380	306	4491	-2,6	58733	2,4
CZ	156	2242	3549	5947 ²	-1580	37	4330	0,4	59826	2,7
H	20	805	1579	2404 ²	594	0	2998	4,1	37751	1,8
PL ⁵	304	0	10685	10989 ²	-512	124	10353	6,1	136924	1,4
SK	410	1267	614	2291 ²	-358	17	1916	-1,3	26365	3,4
UCTE	28868	60639	95533	185040²	-976	3449	180615	1,0	2203022	1,5
RO	1599	249	2252	4100 ²	-275	0	3825	n.a.	n.a.	n.a.
BG	362	1098	1043	2503 ²	-87	41	2375	n.a.	n.a.	n.a.
West-UA	14	0	483	497 ²	-277	0	220	n.a.	n.a.	n.a.

¹ Percentage as referred to total values in %

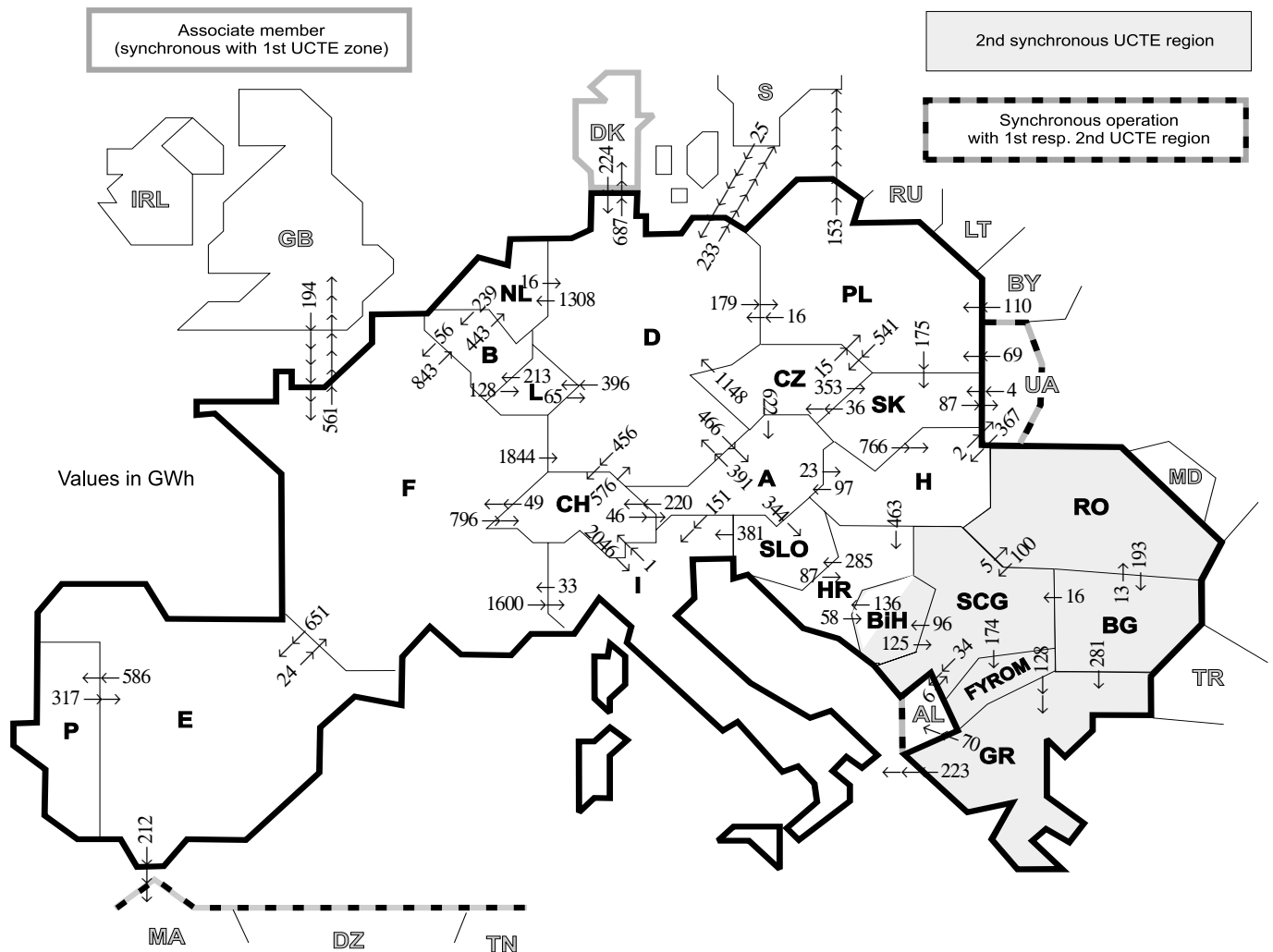
Countries	B	D	E	F	GR ⁴	I	SLO	HR	BiH	FY- ROM	SCG	L	NL	A	P	CH	CZ	H	PL	SK	RO	BG	West- UA
Production	99	94	94	97	93	100	95	100	99	100	96	98	100	84	91	100	100	100	100	100	100	100	100
Consumption	99	94	94	97	93	100	95	100	99	100	96	99	100	90	91	100	100	100	100	100	100	100	100

² Including deliveries from industry

³ Variation as compared to corresponding period of the previous year and representativity 100%

⁴ The representativity of data referring to the whole country including the isolated systems of the Greek island is 93%.
The representativity of data referring interconnected system on the mainland is 99%.

⁵ Production values are gross values.



Exporting countries	Importing countries																			Σ Export							
	B	D	E	F	GR	I	SLO	HR	BIH	FY-ROM	SCG	L	NL	A	P	CH	CZ	H	PL		SK	RO	BG	West-UA	DK ²	III ¹	
B	-	-	-	56	-	-	-	-	-	-	-	128	443	-	-	-	-	-	-	-	-	-	-	-	-	-	627
D	-	-	-	0	-	-	-	-	-	-	-	396	1308	466	-	456	0	-	179	-	-	-	-	687	920	-	3725
E	-	-	-	24	-	-	-	-	-	-	-	-	-	-	586	-	-	-	-	-	-	-	-	-	-	212	822
F	843	1844	651	-	-	1600	-	-	-	-	-	-	-	-	-	796	-	-	-	-	-	-	-	-	-	561	6295
GR	-	-	-	-	-	223	-	-	-	0	-	-	-	-	-	-	-	-	-	-	-	0	-	-	-	70	293
I	-	-	-	33	0	-	0	-	-	-	-	-	-	0	-	1	-	-	-	-	-	-	-	-	-	-	34
SLO	-	-	-	-	-	381	-	87	-	-	-	-	-	0	-	-	-	-	-	-	-	-	-	-	-	-	468
HR	-	-	-	-	-	-	285	58	-	0	-	-	-	-	-	-	-	0	-	-	-	-	-	-	-	-	343
BIH	-	-	-	-	-	-	136	-	-	125	-	-	-	-	-	-	-	-	-	-	-	-	-	-	-	-	261
FYROM	-	-	-	-	128	-	-	-	-	0	-	-	-	-	-	-	-	-	-	-	-	0	-	-	-	-	128
SCG	-	-	-	-	-	-	0	96	174	-	-	-	-	-	-	-	-	0	-	-	5	32	-	-	34	341	
L	213	65	-	-	-	-	-	-	-	-	-	-	-	-	-	-	-	-	-	-	-	-	-	-	-	278	
NL	239	16	-	-	-	-	-	-	-	-	-	-	-	-	-	-	-	-	-	-	-	-	-	-	-	-	255
A	-	391	-	-	-	151	344	-	-	-	-	-	-	-	-	-	-	-	-	-	-	-	-	-	-	-	1129
P	-	-	317	-	-	-	-	-	-	-	-	-	-	-	-	220	0	23	-	-	-	-	-	-	-	-	317
CH	-	576	-	49	-	2046	-	-	-	-	-	-	-	46	-	-	-	-	-	-	-	-	-	-	-	-	2717
CZ	-	1148	-	-	-	-	-	-	-	-	-	-	-	622	-	-	-	-	15	353	-	-	-	-	-	-	2138
H	-	-	-	-	-	-	-	463	-	-	0	-	-	97	-	-	-	-	-	-	0	0	-	2	-	2	562
PL	-	16	-	-	-	-	-	-	-	-	-	-	-	-	-	-	541	-	-	175	-	-	0	-	0	885	
SK	-	-	-	-	-	-	-	-	-	-	-	-	-	-	-	-	-	36	766	0	-	-	-	87	-	889	
RO	-	-	-	-	-	-	-	-	-	100	-	-	-	-	-	-	-	-	0	-	-	193	-	-	-	293	
BG	-	-	-	-	281	-	-	-	-	0	16	-	-	-	-	-	-	-	-	-	-	13	-	-	-	0	310
West-UA	-	-	-	-	-	-	-	-	-	-	-	-	-	-	-	-	-	-	-	-	-	-	-	-	-	440	
DK ²	-	224	-	-	-	-	-	-	-	-	-	-	-	-	-	-	-	-	-	367	69	4	0	-	-	-	224
III ¹	-	249	0	194	0	-	-	-	-	-	-	-	-	-	-	-	-	-	-	367	179	4	0	0	-	-	999
Σ Import	1295	4305	968	356	409	4401	629	686	154	174	247	524	1751	1231	586	1473	577	1156	373	532	18	225	89	687	2039	24109	

Sum of physical energy flows between UCTE countries = 21160 GWh

Total physical energy flows = 24109 GWh

¹ III = Third countries: Albania, Belarus, Denmark, Great Britain, Morocco, Republic of Moldavia, Sweden, Republic of Turkey and West-Ukraine

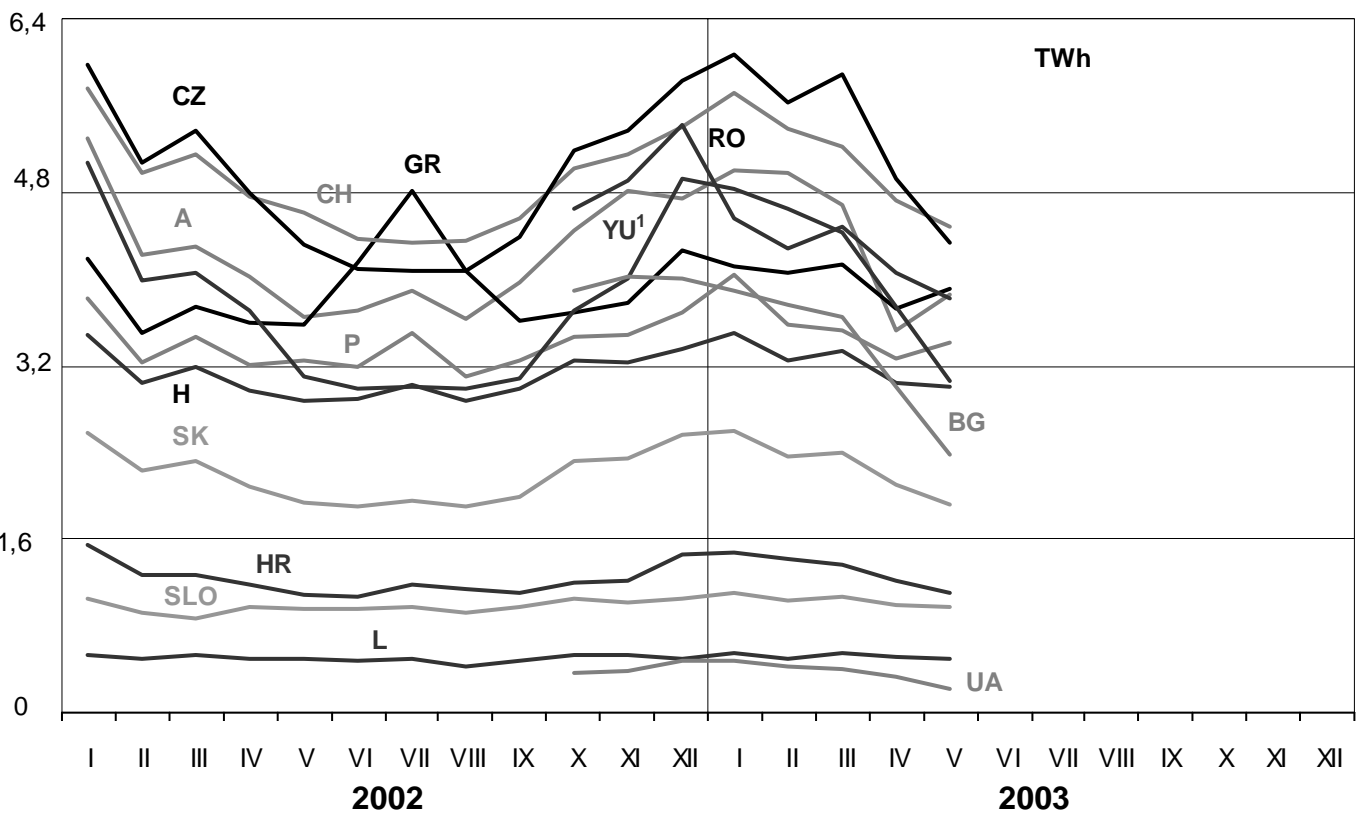
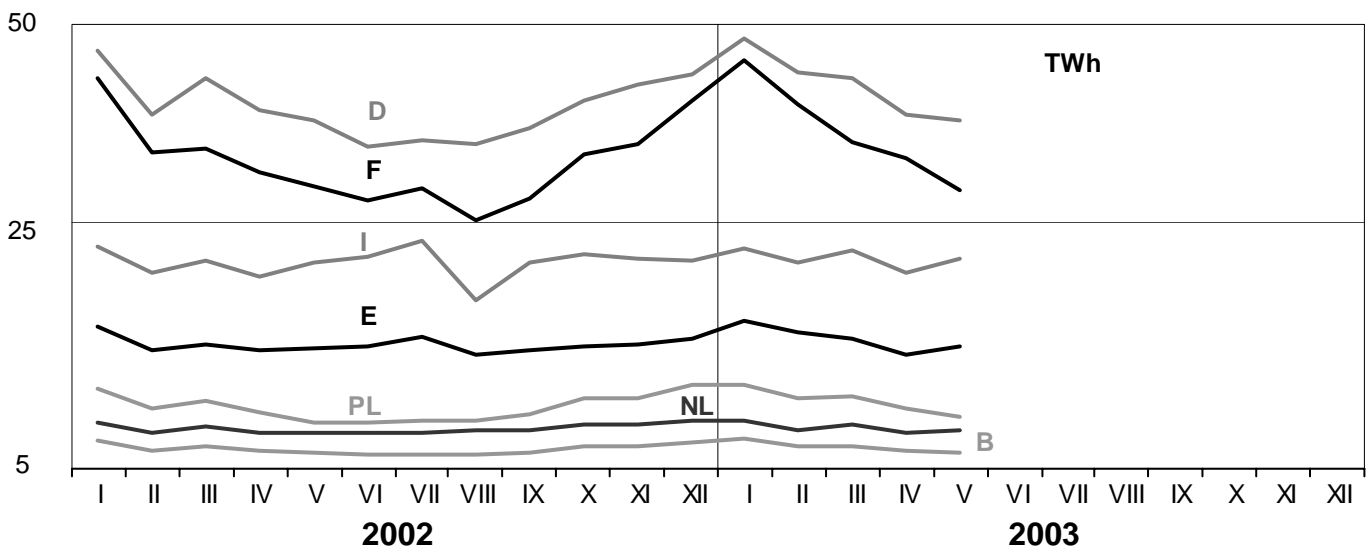
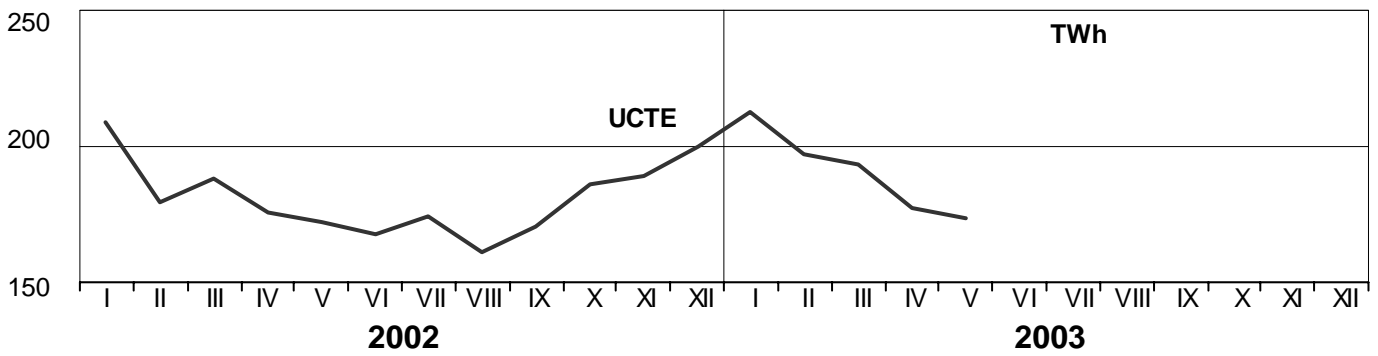
² Denmark (Jutland)

These physical energy flows were measured on the cross-frontier transmission lines (≥ 110 kV) listed in table 9 of the Statistical Yearbook. These values may differ from the official statistics and the exchange balances in chapter 1.

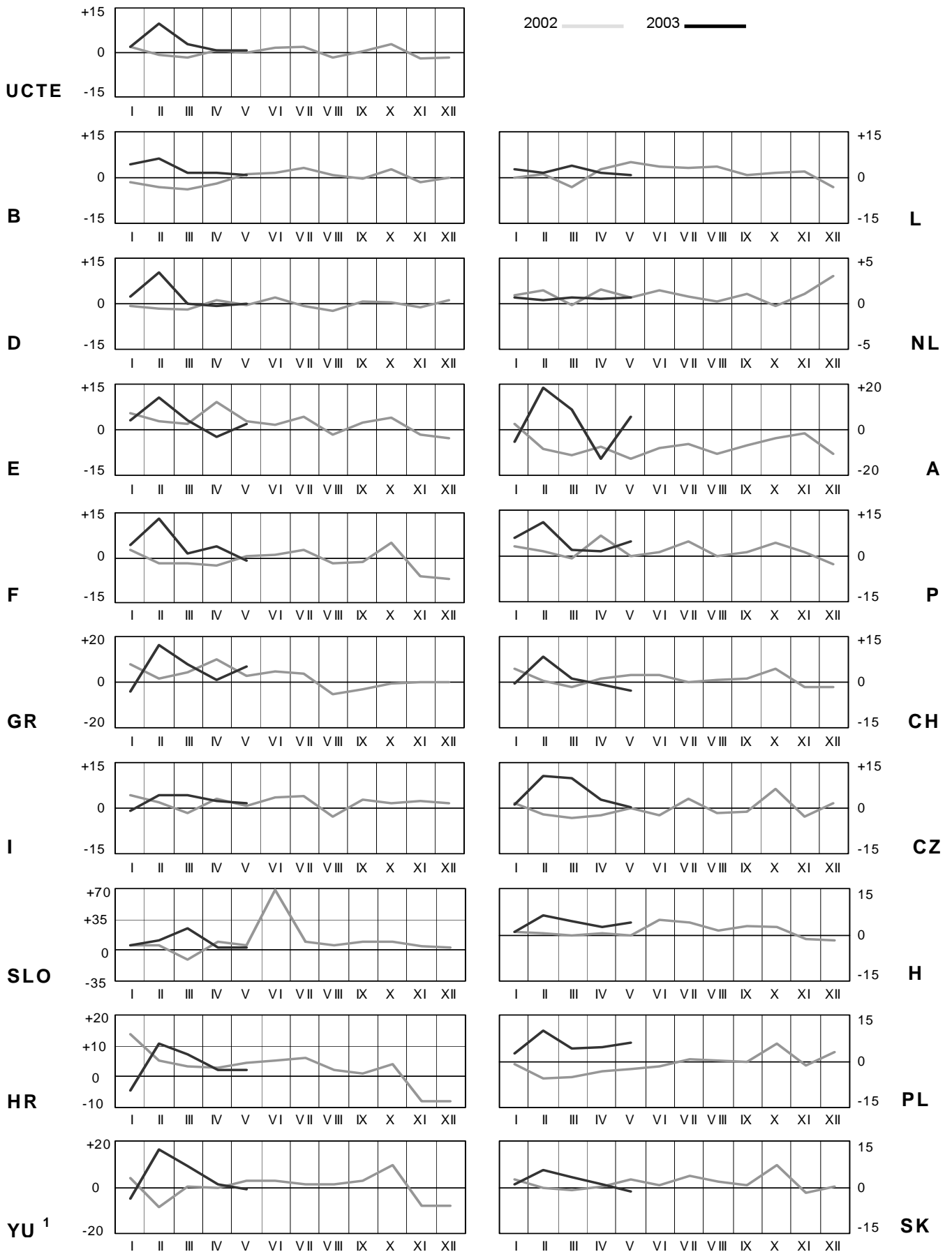
3

Monthly consumption

May 2003



¹ YU = FRY + FYROM (Federal Republic of Yugoslavia and Former Yugoslav Republic of Macedonia)

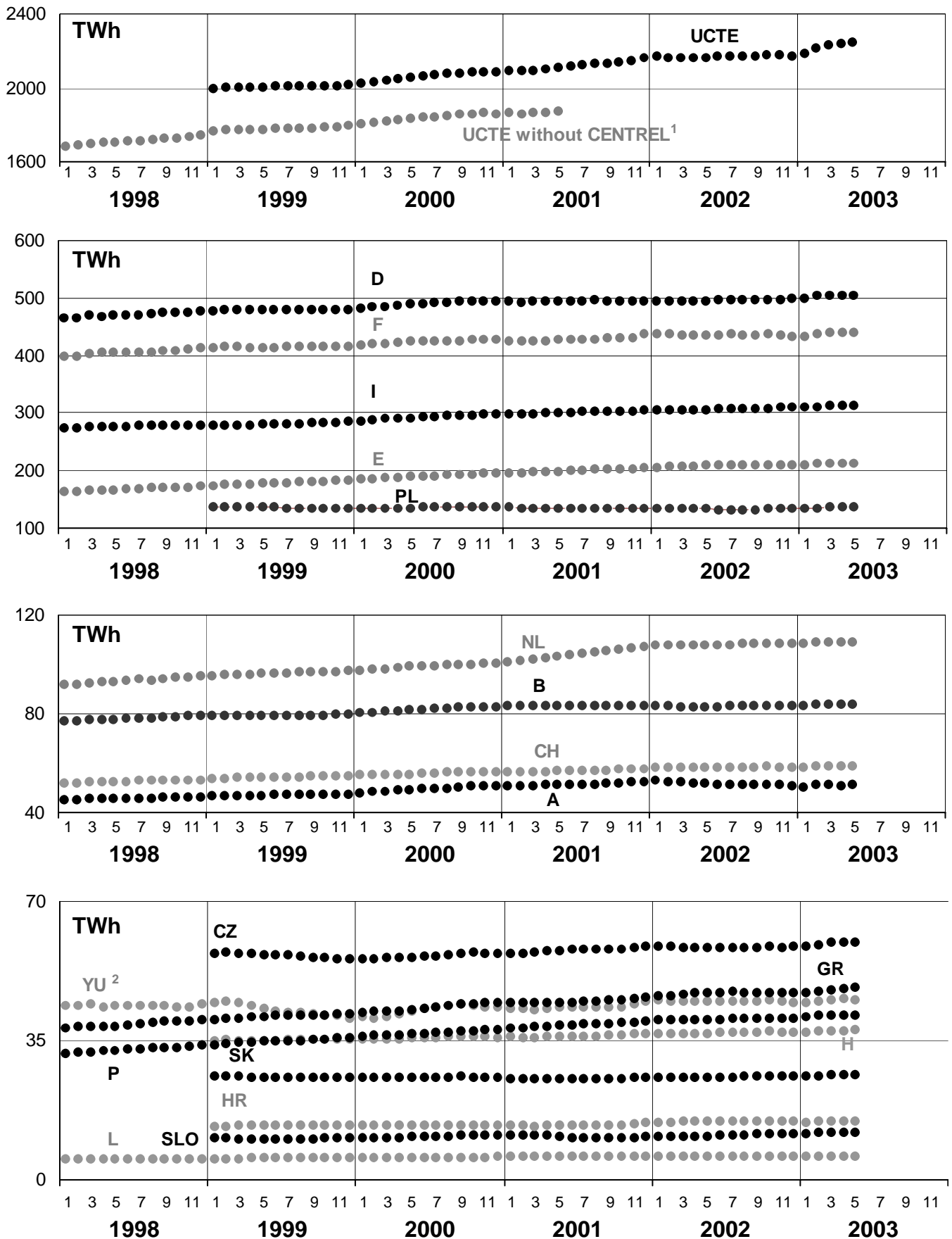


¹YU = FRY + FYROM (Federal Republic of Yugoslavia and Former Yugoslav Republic of Macedonia)

5

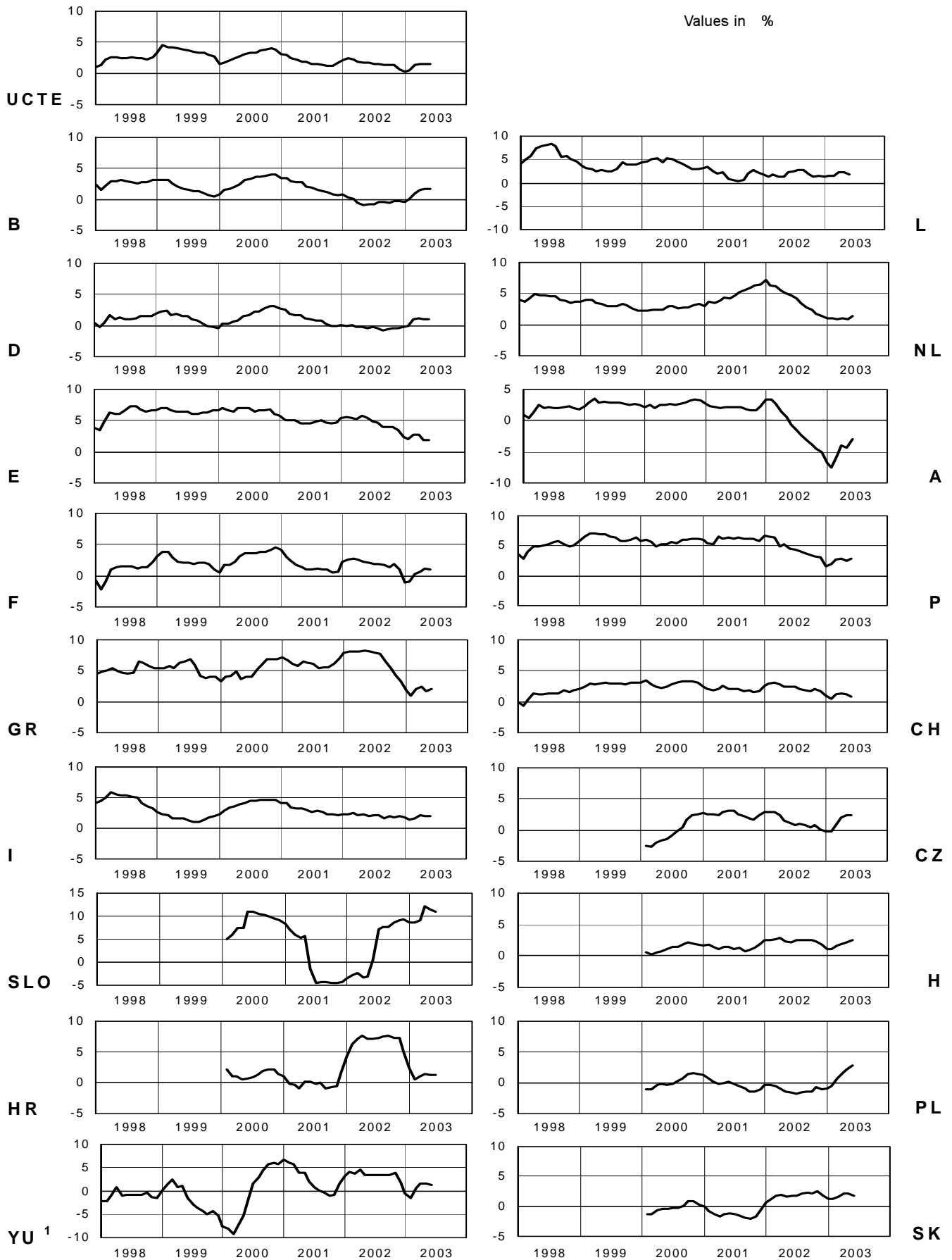
Consumption of last 12 months

May 2003

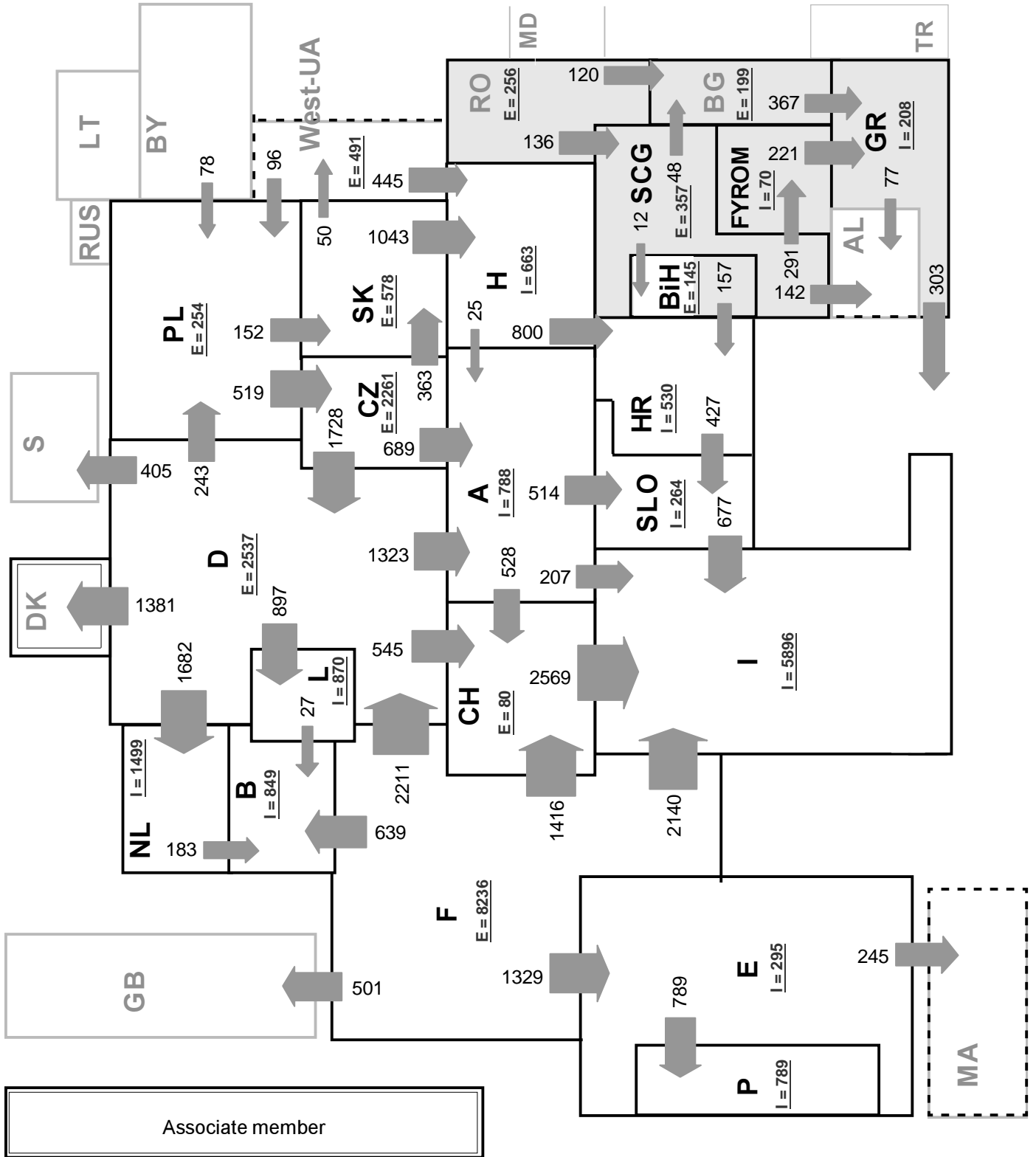


¹ CENTREL countries CZ, H, PL and SK member of UCTE from May 2001

² YU = FRY + FYROM (Federal Republic of Yugoslavia and Former Yugoslav Republic of Macedonia)



¹ YU = FRY + FYROM (Federal Republic of Yugoslavia and Former Yugoslav Republic of Macedonia)



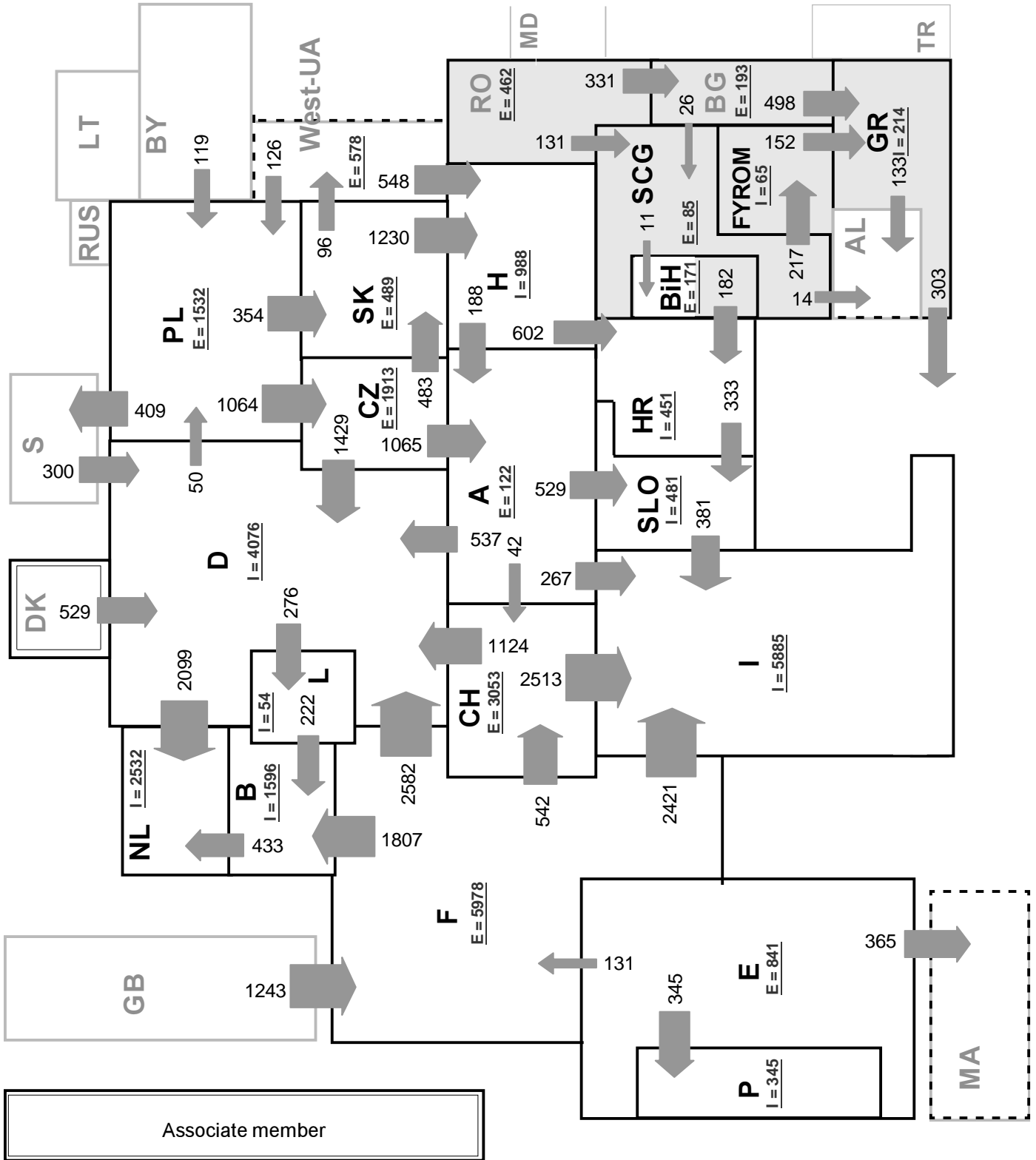
Sum of load flows in MW:

UCTE = 25320 Total = 28740

* Central European Time (CET)

I = Import balance

E = Export balance



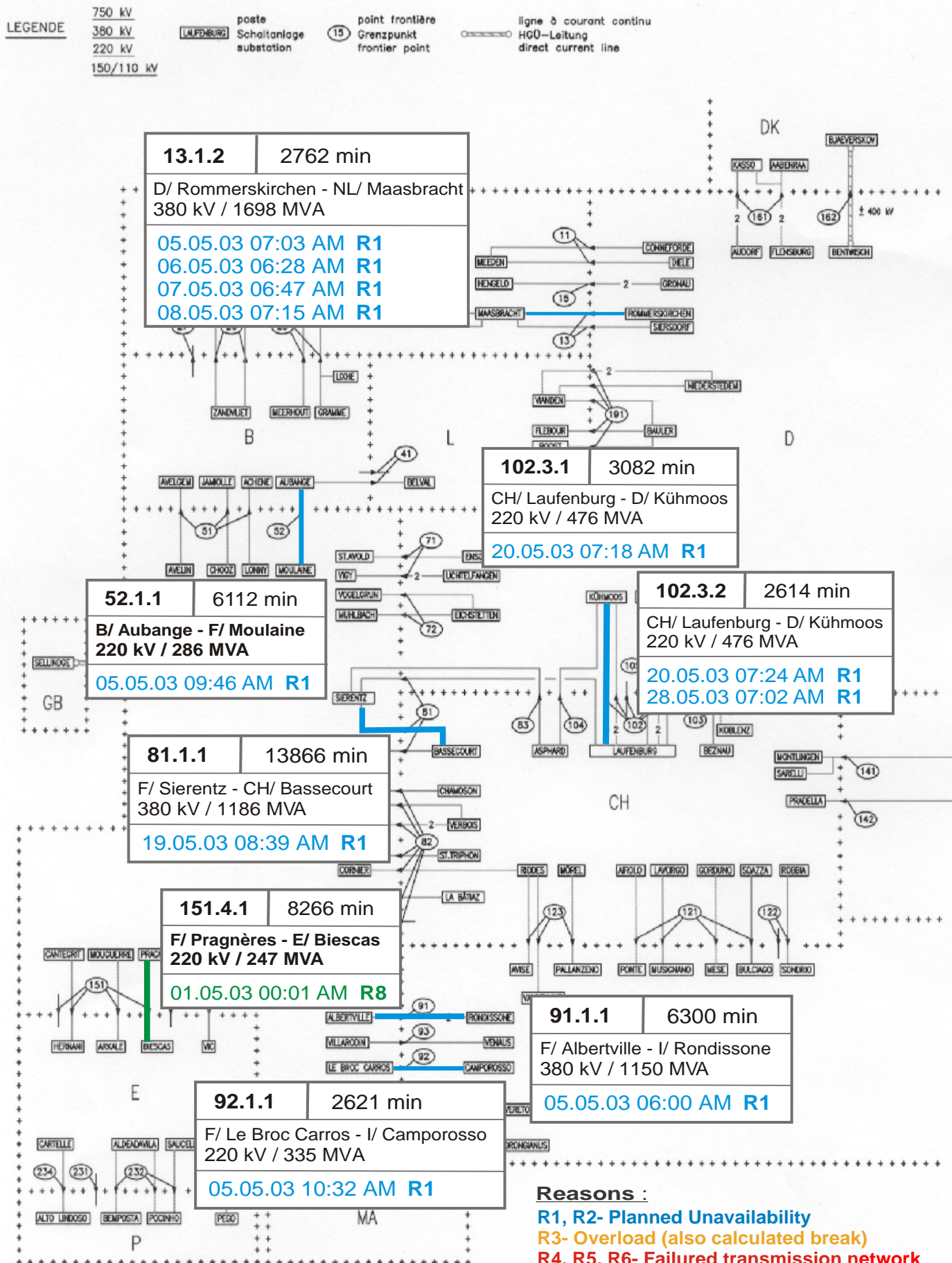
Sum of load flows in MW:

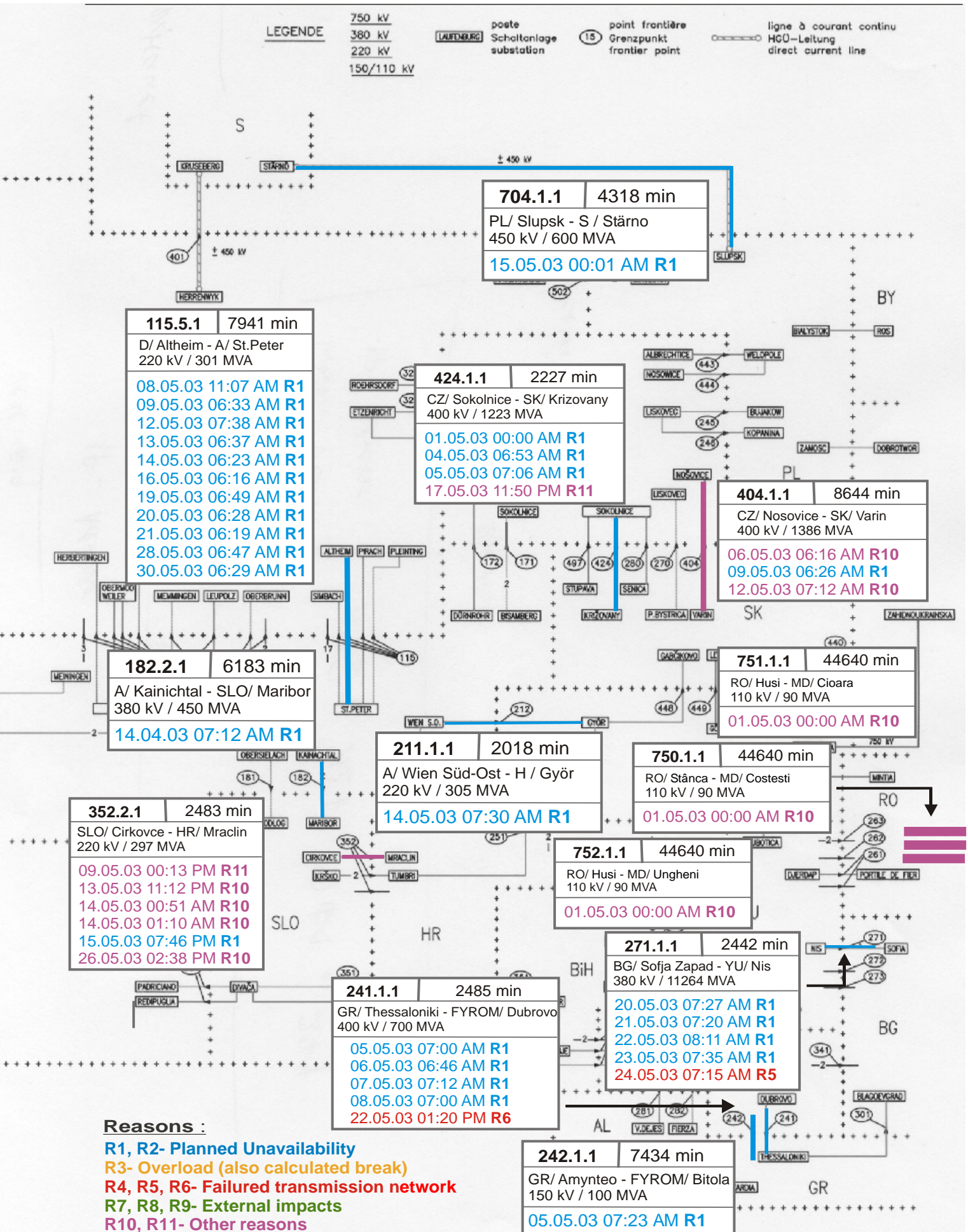
UCTE = 24900 Total = 28782

* Central European Time (CET)

I = Import balance

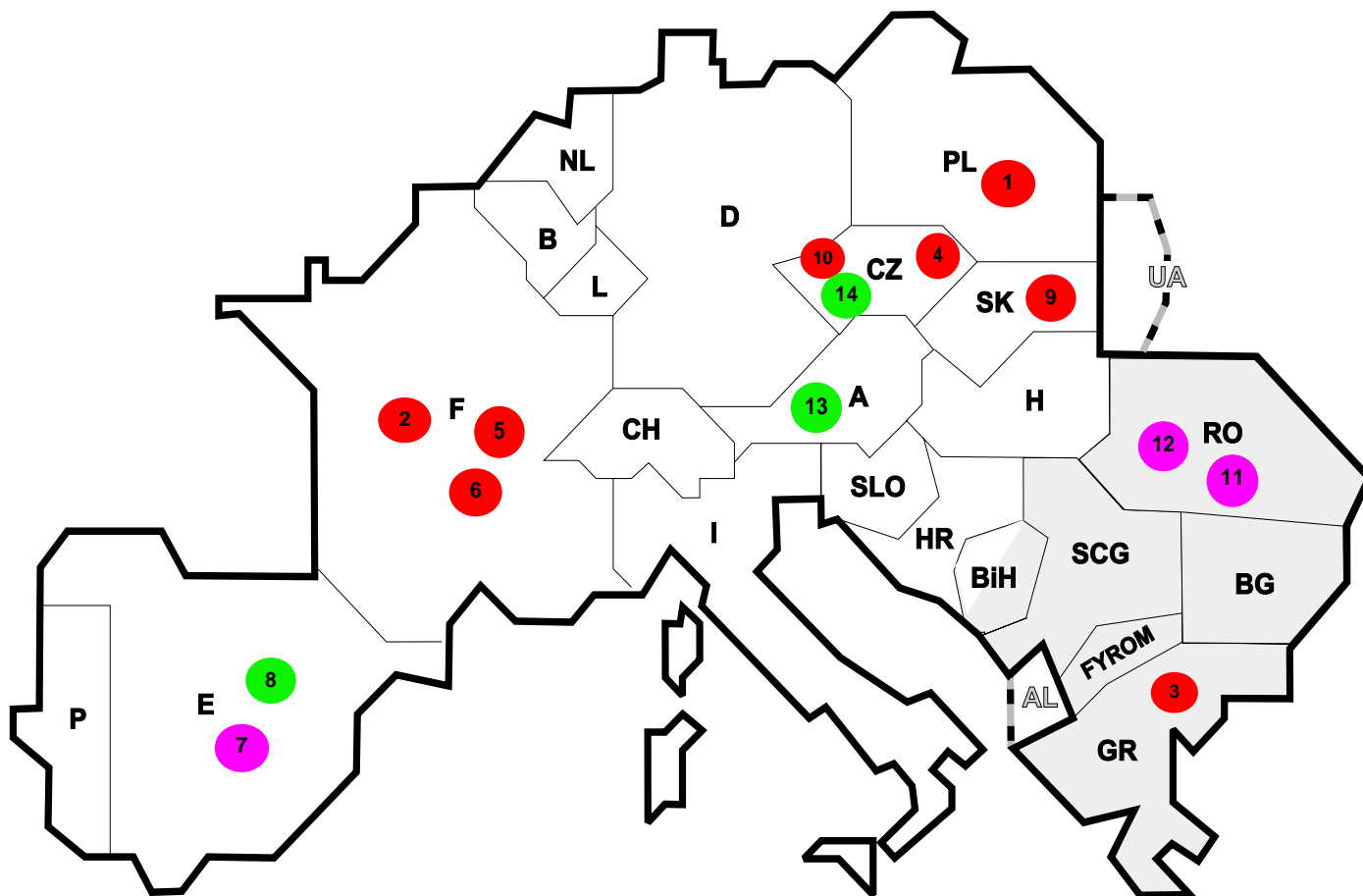
E = Export balance





Reasons :

- R1, R2- Planned Unavailability
- R3- Overload (also calculated break)
- R4, R5, R6- Failed transmission network
- R7, R8, R9- External impacts
- R10, R11- Other reasons



Reasons:

R3 Overload

R7, R8, R9 External impacts (animals...)

R4, R5, R6 Failure in the transmission network

R10, R11 Other reasons

Nbr	Country	Substation	Reason	Energie not supplied [MWh]	Total loss of power [MW]	Restoration time [min]	Equivalent tim of interruption
1	PL	Rogow iec	R5	390	678	69	2,60
2	F	Génissiat	R6	188	128	88	0,15
3	GR	Ag. Dimitrios	R6	100	600	10	6,53
4	CZ	Sokolnice	R6	88	24	30	0,21
5	F	La Croix	R4	33	56	35	0,07
6	F	Novion	R6	28	10	170	0,01
7	E	Atarfe	R11	13	0	3	0,00
8	E	Mansofigueras	R8	8	0	3	0,00
9	SK	Sucany	R6	8	46	10	0,92
10	CZ	Mlin	R6	4	0	5	0,00
11	RO	Craiova Nord	R10	3	28	5	0,69
12	RO	Portile de Fier	R10	2	16	9	0,40
13	A	Weißenbach	R7	0	0	264	0,00
14	CZ	Vitkov	R8	0	100	19	0,88

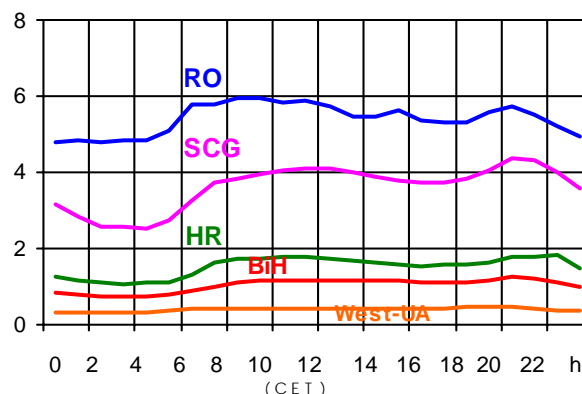
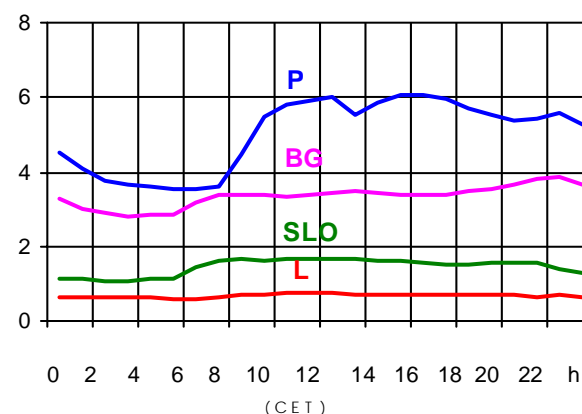
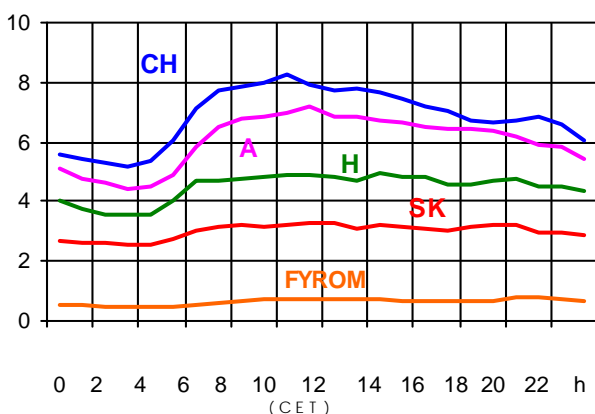
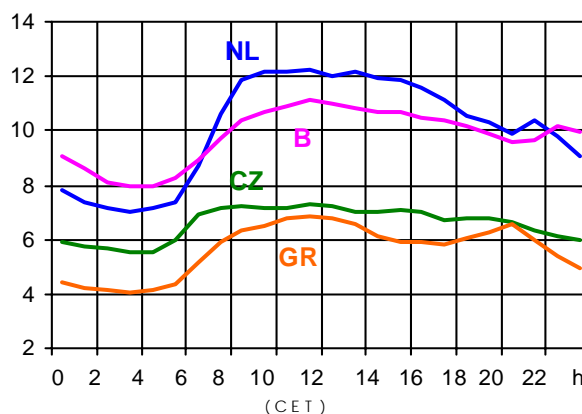
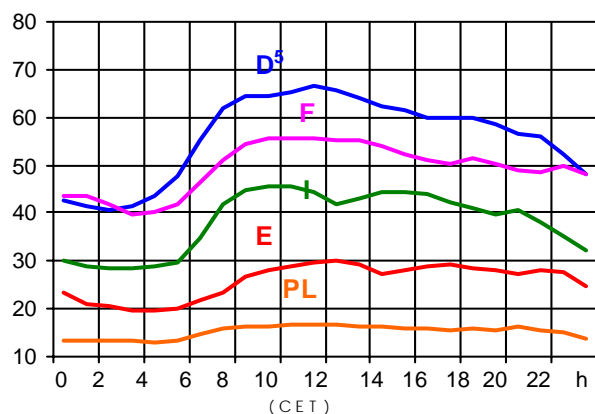
¹ (year [in min] * power loss) / consumption last 12 months

Control area	Prog_exp	Prog_imp	Prog_exp3	Prog_imp3	Prog_exp11	Prog_imp11
B	431145	1078607	377	1281	801	1715
D	2064195	3600120	3173	3773	3210	5900
E	527351	639861	1071	1300	909	0
F	7648343	1729808	10018	1825	10442	4496
GR	223660	338672	300	438	300	528
I	34054	4401306	0	5896	0	5884
SLO	365557	541832	405	692	405	922
HR	n.a.	n.a.	n.a.	n.a.	n.a.	n.a.
BiH	n.a.	n.a.	n.a.	n.a.	n.a.	n.a.
FYROM	128	174	221	291	152	217
YU	399905	314072	586	256	481	391
NL	313222	1813467	333	1844	568	3117
A	821505	482792	863	1066	1233	853
P	114281	393476	0	800	700	1059
CH	2884367	1642800	2619	2416	5259	2266
CZ	1955736	374685	2646	330	2731	780
H	321792	915814	570	1237	490	1495
PL	678282	121990	440	195	1705	130
SK	584263	179209	695	67	940	377
RO	210818	25344	209	25	360	43
BG	n.a.	n.a.	n.a.	n.a.	n.a.	n.a.
UA	277542	0	385	0	450	0

- Control areas can differ from national borders (i.e. German block which includes parts of A, L and DK).
- Values are calculated on an hourly base (MWh).
- This values are not the provisional values entered in the VULCANUS system, but the definitive values after an eventual correction during the actual date.
- Prog_exp: Sum of all positive values of every hour of every border
- Prog_imp: Sum of all negative values of every hour of every border
- Prog_exp3: Sum of all positive values the third Wednesday from 02:00 to 03:00 a.m.
- Prog_imp3: Sum of all negative values the third Wednesday from 02:00 to 03:00 a.m.
- Prog_exp11: Sum of all positive values the third Wednesday from 10:00 to 11:00 a.m.
- Prog_imp11: Sum of all negative values the third Wednesday from 10:00 to 11:00 a.m.

Consumption hourly load curves¹ on 21.05.03

Values in GW



	Peak load MW	Δ % ²	Cons_load_repr ¹ %	Parallel load ³ MW
B	11137	2,1	100	9427
D	66700	1,1	91	72100
E	29915	12,0	94	29625
F ⁴	55887	3,1	97	63936
GR ⁴	6878	3,3	93	6548
I	45743	3,1	100	40139
SLO	1667	5,0	95	1117
HR	1835	0,1	100	1765
BIH	1251	n.a.	100	1525
FYROM	801	n.a.	100	670
SCG	4365	n.a.	96	4152
L	766	-5,7	99	743
NL	12269	-1,4	90	9657
A	7179	0,8	82	6199
P	6071	10,9	92	5110
CH	8278	4,2	100	11740
CZ	7271	4,1	100	9410
H	4962	3,0	100	3901
PL	16833	5,0	100	18011
SK	3278	4,4	100	3687
UCTE	298852	4,3		308871
DK ⁶				2310
RO	5962	n.a.	100	5836
BG	3851	n.a.	100	3573
West-UA	493	n.a.	100	888

¹ Percentage as referred to total values in %

² Variation as compared to corresponding month of the previous year

³ Including autoproduction

⁴ The representativity of data referring to the whole country, including the systems of the Greek islands, is 93%. The representativity of data to the interconnected system is 99%.

⁵ Values estimated on the basis of former data from the German Federal Office for Statistics

⁶ Denmark (Jutland)



Contact

Boulevard Saint-Michel, 15
B-1040 Brussels - Belgium
Tel +3227416940 - Fax +3227416949

info@ucte.org
www.ucte.org