



April 2009

Monthly provisional values as of 19 November 2009

European Network of Transmission System Operators for Electricity

Regional Group Continental Europe



Table of contents		Page
1	Electricity supply situation of the countries	2
2	Physical energy flows	3
3	Monthly consumption	4
4	Monthly consumption variation	6
5	Consumption of the last 12 months	8
6	Variation of the last 12 months' consumption	10
7	Load flows (night)	12
8	Load flows (day)	13
9	Unavailability of international tie lines (major events)	14
10	Network reliability (major events)	16
11	Scheduled exchanges	17
12	Load on the 3 rd Wednesday	18

General remarks and abbreviations used in the tables

- Country code UCTE represents the ENTSO-E Regional Group Continental Europe (former all countries of the Union for the Co-ordination of Transmission of Electricity)
- All values of production and consumption in chapter 1, 3&4, 5&6 and 12 are calculated to represent 100% of the national values.
- DK_W Denmark West represents the Western part of Denmark synchronously interconnected with ENTSO-E Regional Group Continental Europe (Jutland and Funen).
- UA_W Ukraine West represents the so-called Burshtyn Island synchronously interconnected with ENTSO-E Regional Group Continental Europe
- CET Central European Time
- The Bulgarian load values on the 3rd Wednesday are gross values

Countries	Net production in GWh							Exchange balance in GWh	Pump in GWh	Consumption in GWh			
	Therm. nuclear	Fossil fuels	Hydro prod	Other renew.	Of which wind	Non identifiable	Total			monthly	var. [%]	last 12 months	var. [%]
AT	0	1200	3917	0	0	836	5953	-639	305	5009	-10,6	67245	-1,8
BA	0	470	637	0	0	0	1107	-291	0	816	-10,4	11375	-0,8
BE ²	3358	2704	151	301	44	0	6514 ¹	30	150	6394	-15,2	86217	-5,5
BG	972	1455	378	0	0	0	2805	-214	58	2533	-3,9	34060	-0,2
CH	2324	165	2899	99	2	0	5487 ¹	-514	176	4797	-10,7	64072	-0,2
CZ	1993	3714	300	26	18	0	6033 ¹	-1360	49	4624	-15,9	63605	-3,4
DE	10494	23882	2092	4818	2180	0	41286 ¹	-572	479	40235	-13,7	544193	-2,5
DK_W	0	1286	1	352	237	0	1639 ¹	-56	0	1583	-9,5	21323	-2,5
ES	4045	10262	2369	3412	2910	33	20121	-549	252	19319	-11,9	264523	-2,5
FR	30865	2643	6567	723	470	0	40798	-2748	614	37436	-10,1	494162	0,3
GR	0	2926	518	154	132	0	3598 ¹	324	29	3893	-5,2	55694	-0,8
HR	0	303	814	3	2	1	1121 ¹	208	5	1324	-5,2	17699	-0,8
HU	1090	1722	0	0	0	0	2812 ¹	340	0	3152	-6,2	41088	-1,8
IT	0	14310	4887	1216	798	0	20413	3944	555	23802	-12,5	329092	-3,9
LU	0	230	58	13	4	0	301	265	66	500	-16,0	6318	-8,3
ME ³	0	35	175	0	0	0	210	138	0	348	n.a.	4449	n.a.
MK	0	343	135	0	0	0	478	94	0	572	-17,5	8395	-4,0
NL	147	7293	0	541	229	0	7981 ¹	923	0	8904	-5,5	118645	0,4
PL ⁴	0	10389	317	75	60	0	10781 ¹	-249	48	10484	-11,0	140055	-2,8
PT	0	2209	546	676	537	0	3431 ¹	594	80	3945	-5,8	51775	0,1
RO	912	1474	1687	0	0	0	4073	-248	22	3803	-13,5	53325	-3,7
RS	0	1674	1234	0	0	0	2908	68	116	2860	-11,6	39259	0,4
SI	0	348	511	0	0	0	859	-34	0	825	-20,1	12122	-9,2
SK	1010	487	623	33	1	0	2153 ¹	-241	24	1888	-16,5	26774	-4,1
UCTE	57210	91524	30816	12442	7624	870	192862 ¹	-787	3028	189046	-11,5	2555465	-2,0
UA_W	0	411	17	0	0	0	428	-143	0	285	-16,4	4025	-7,7

¹ Including deliveries from industry

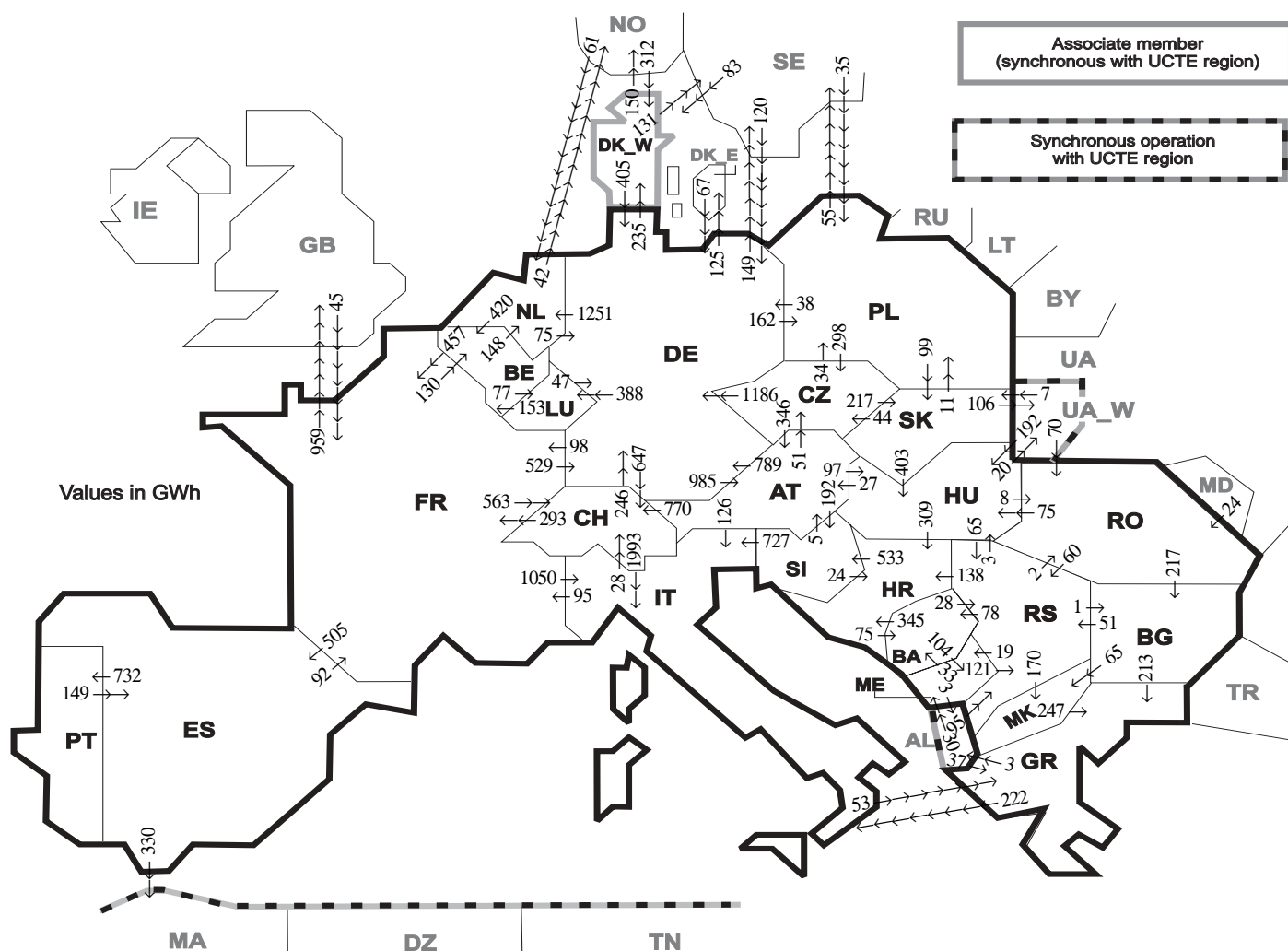
² The reported figures are best estimates based on actual measurements and extrapolations

³ Monthly national values as of April 2008

⁴ Operational data

All representativities of the national production and consumption values used to calculate values at a representativity of 100% as stated in the table above:

Countries	AT	BA	BE	BG	CH	CZ	DE	DK_W	ES	FR	GR	HR	HU	IT	LU	ME	MK	NL	PL	PT	RO	RS	SI	SK	UA_W
Production																									
Therm.nuclear	100	100	100	100	100	100	100	100	100	100	100	100	100	100	100	100	100	100	100	100	100	100	100	100	100
Fossil fuels	100	100	100	100	100	100	100	100	97	100	100	100	100	100	100	100	100	100	95	100	100	100	100	100	100
Hydro prod	100	100	100	100	100	100	100	100	100	100	100	100	100	100	100	100	100	100	100	100	100	100	100	100	100
Other renew.	100	100	100	100	100	100	100	100	95	100	100	100	100	100	100	100	100	100	100	100	100	100	100	100	100
Non identifiable	100	100	100	100	100	100	100	100	100	100	100	100	100	100	100	100	100	100	100	100	100	100	100	100	100
Consumption	100	100	100	100	100	100	100	100	98	100	100	100	100	100	100	100	100	100	97	100	100	100	100	100	100



Exporting countries	AT	BA	BE	BG	CH	CZ	DE	DK_W	ES	FR	GR	HR	HU	IT	LU	ME	MK	NL	PL	PT	RO	RS	SI	SK	UA_W	Other III ¹	Sum export
AT	-	-	-	-	770	51	789	-	-	-	-	-	97	126	-	-	-	-	-	-	-	192	-	-	-	2025	
BA	-	-	-	-	-	-	-	-	-	-	-	345	-	-	-	104	-	-	-	-	-	28	-	-	-	477	
BE	-	-	-	-	-	-	-	-	457	-	-	-	-	77	-	-	148	-	-	-	-	-	-	-	-	682	
BG	-	-	-	-	-	-	-	-	-	213	-	-	-	-	-	65	-	-	-	0	51	-	-	-	0	329	
CH	0	-	-	-	-	-	246	-	-	293	-	-	-	1993	-	-	-	-	-	-	-	-	-	-	-	2532	
CZ	346	-	-	-	-	-	-	-	-	-	-	-	-	-	-	-	-	34	-	-	-	-	217	-	-	1783	
DE	985	-	-	-	647	0	-	235	98	-	-	-	-	388	-	-	-	1251	162	-	-	-	-	-	-	4040	
DK_W	-	-	-	-	-	-	405	-	-	-	-	-	-	-	-	-	-	-	-	-	-	-	-	-	-	686	
ES	-	-	-	-	-	-	-	-	92	-	-	-	-	-	-	-	-	-	-	732	-	-	-	-	-	1154	
FR	-	-	130	-	563	-	529	-	505	-	-	-	1050	-	-	-	-	-	-	-	-	-	-	-	-	3736	
GR	-	-	-	0	-	-	-	-	-	-	-	-	-	222	-	-	0	-	-	-	-	-	-	-	-	225	
HR	-	75	-	-	-	-	-	-	-	-	-	0	-	-	-	-	-	-	-	-	-	0	533	-	-	608	
HU	27	-	-	-	-	-	-	-	-	-	-	309	-	-	-	-	-	-	-	-	8	65	0	20	-	429	
IT	0	-	-	-	28	-	-	-	95	53	-	-	-	-	-	-	-	-	-	-	-	0	-	-	-	176	
LU	-	-	153	-	-	-	47	-	-	-	-	-	-	-	-	-	-	-	-	-	-	-	-	-	-	200	
ME	-	33	-	-	-	-	-	-	-	-	-	-	-	-	-	-	-	-	-	-	-	-	-	-	3	157	
MK	-	-	-	0	-	-	-	-	-	-	247	-	-	-	-	-	-	-	-	-	-	0	-	-	-	247	
NL	-	-	420	-	-	-	75	-	-	-	-	-	-	-	-	-	-	-	-	-	-	-	-	-	-	537	
PL	-	-	-	-	298	38	-	-	-	-	-	-	-	-	-	-	-	-	-	-	-	-	99	-	55	490	
PT	-	-	-	-	-	-	-	-	149	-	-	-	-	-	-	-	-	-	-	-	-	-	-	-	-	149	
RO	-	-	-	217	-	-	-	-	-	-	-	-	75	-	-	-	-	-	-	-	-	-	-	0	0	352	
RS	-	78	-	1	-	-	-	-	-	-	-	138	3	-	19	170	-	-	-	-	2	-	-	-	-	411	
SI	5	-	-	-	-	-	-	-	-	-	24	-	727	-	-	-	-	-	-	-	-	-	-	-	-	756	
SK	-	-	-	-	44	-	-	-	-	-	-	-	403	-	-	-	-	11	-	-	-	-	-	-	-	564	
UA_W	-	-	-	-	-	-	-	-	-	-	-	-	192	-	-	-	-	-	-	-	70	-	7	-	-	269	
Other III ¹	-	-	-	0	-	-	187	395	0	45	37	-	-	-	-	30	-	61	35	-	24	95	-	-	-	909	
Sum imp	1363	186	703	218	2008	393	3502	630	654	1080	550	816	770	4118	465	153	235	1460	242	732	104	420	725	323	126	1947	23923

Sum of physical energy flows between UCTE countries = 20672GWh Total physical energy flows = 23923GWh

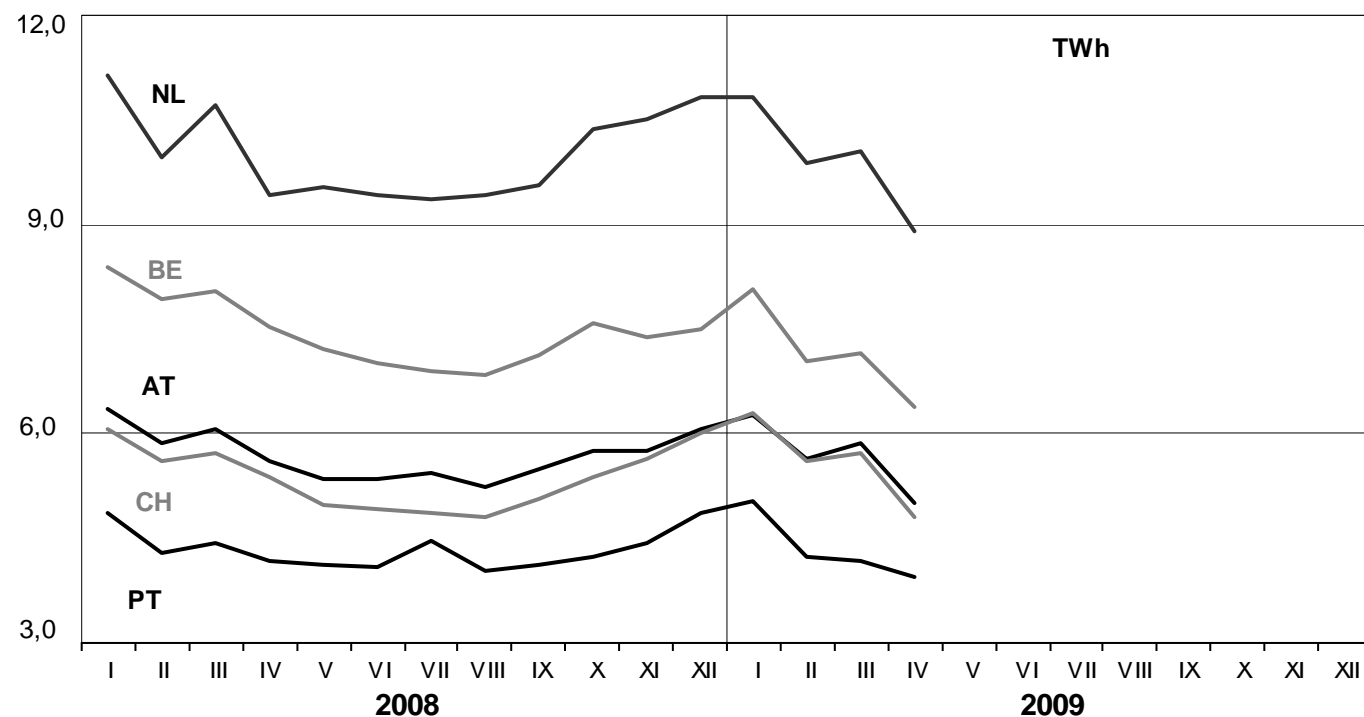
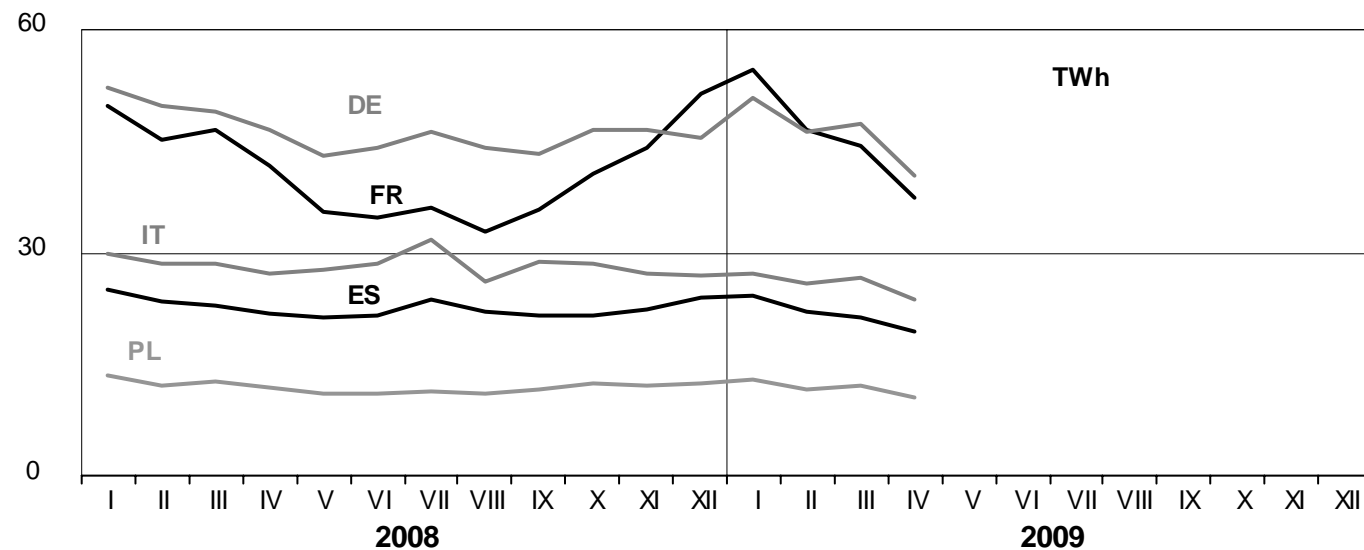
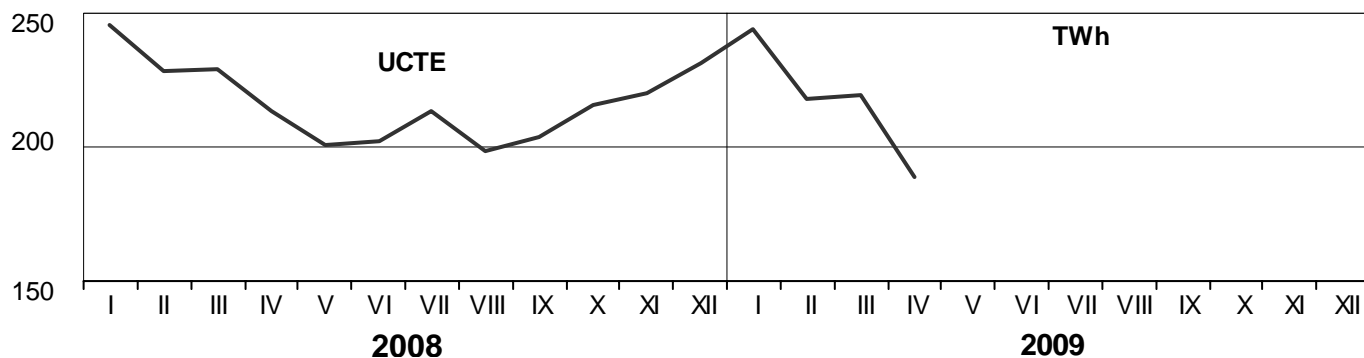
¹ Other III: Albania, Belarus, Denmark East, Great Britain, Morocco, Republic of Moldavia, Norway, Sweden, Republic of Turkey and Ukraine

These physical energy flows were measured on the cross-frontier transmission lines (≤ 110 kV) listed in table 9 of the Statistical Yearbook. These values may differ from the official statistics and the exchange balances in chapter 1.

3

Monthly consumption

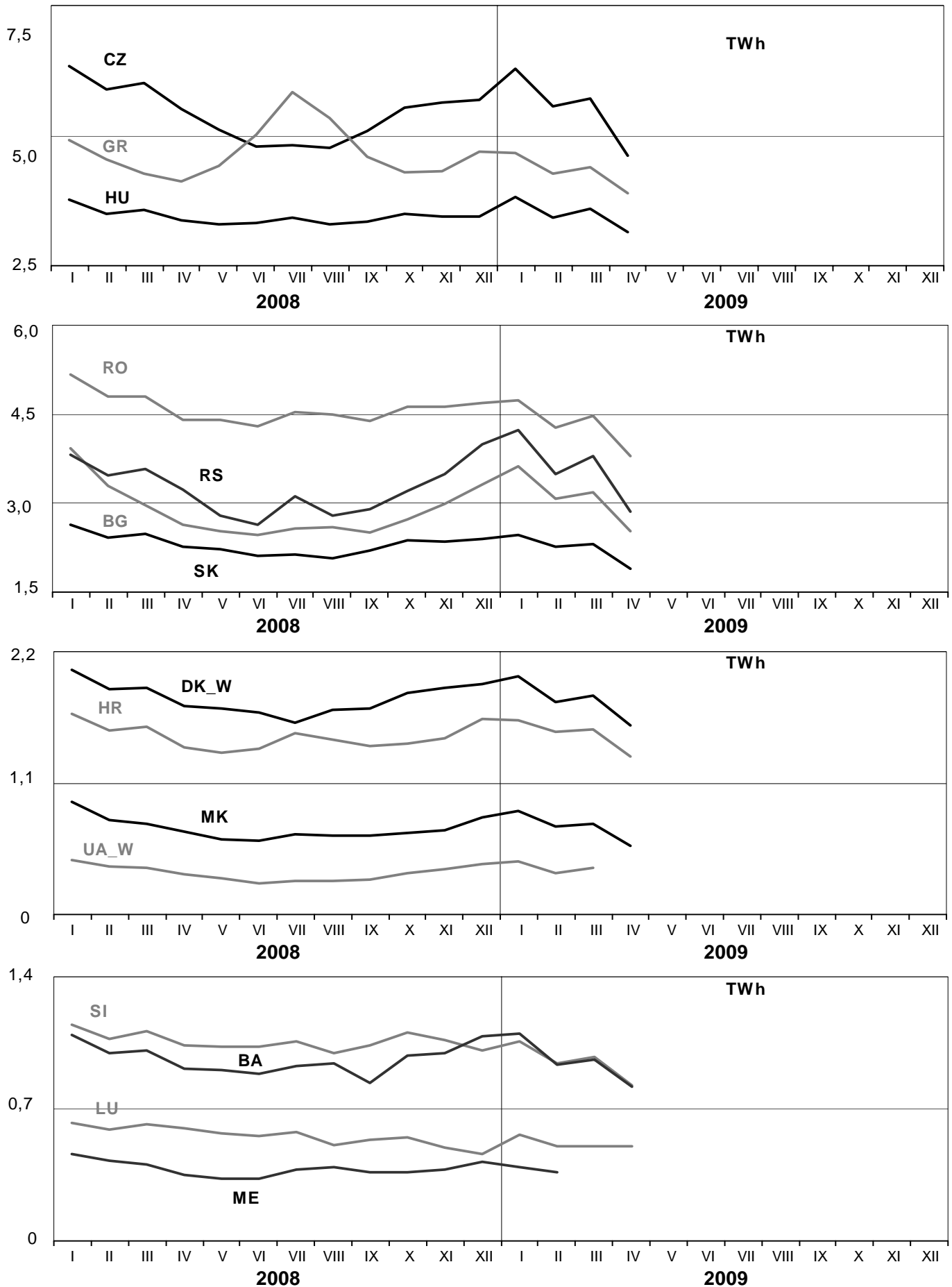
April 2009



3

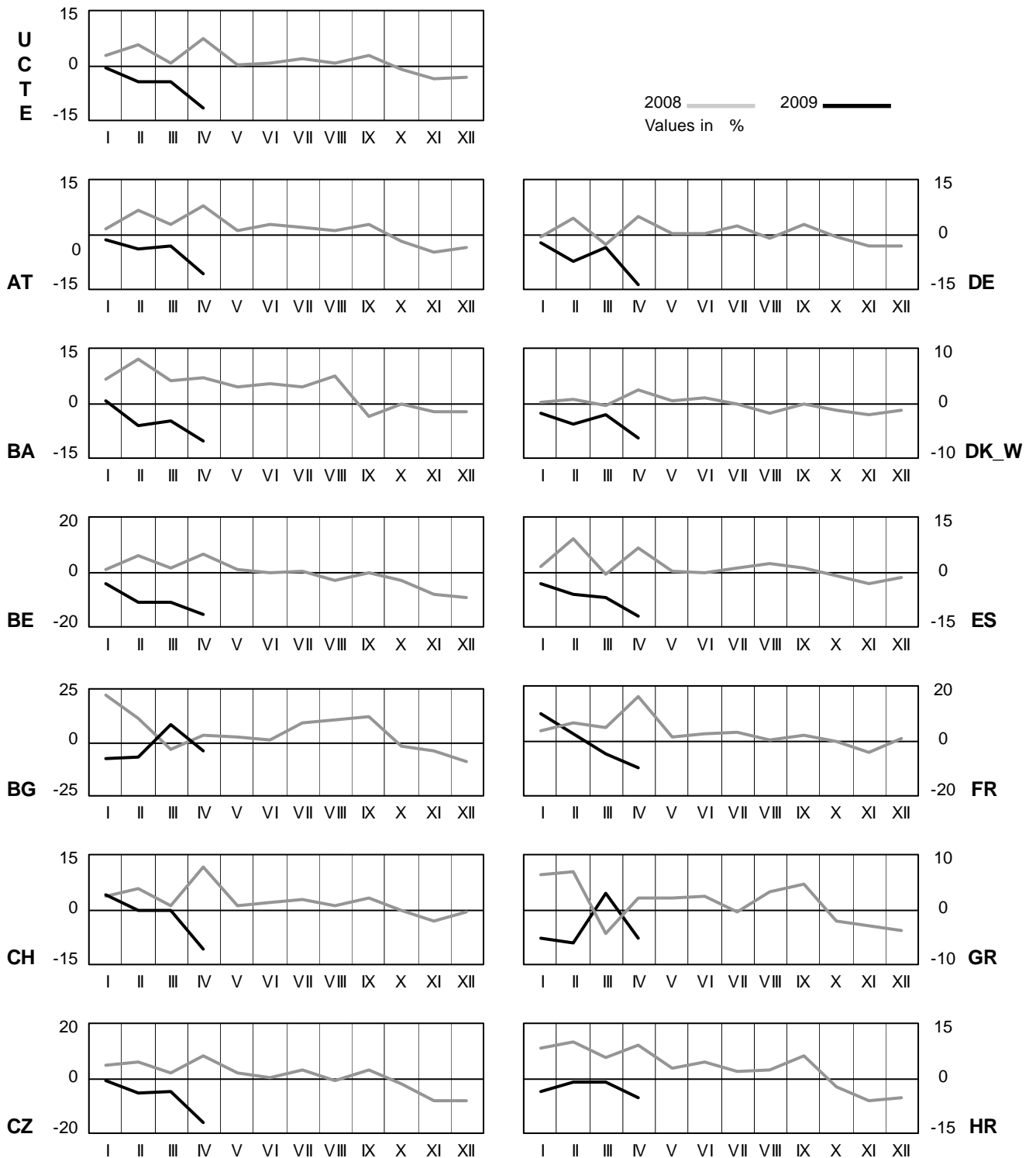
Monthly consumption

April 2009



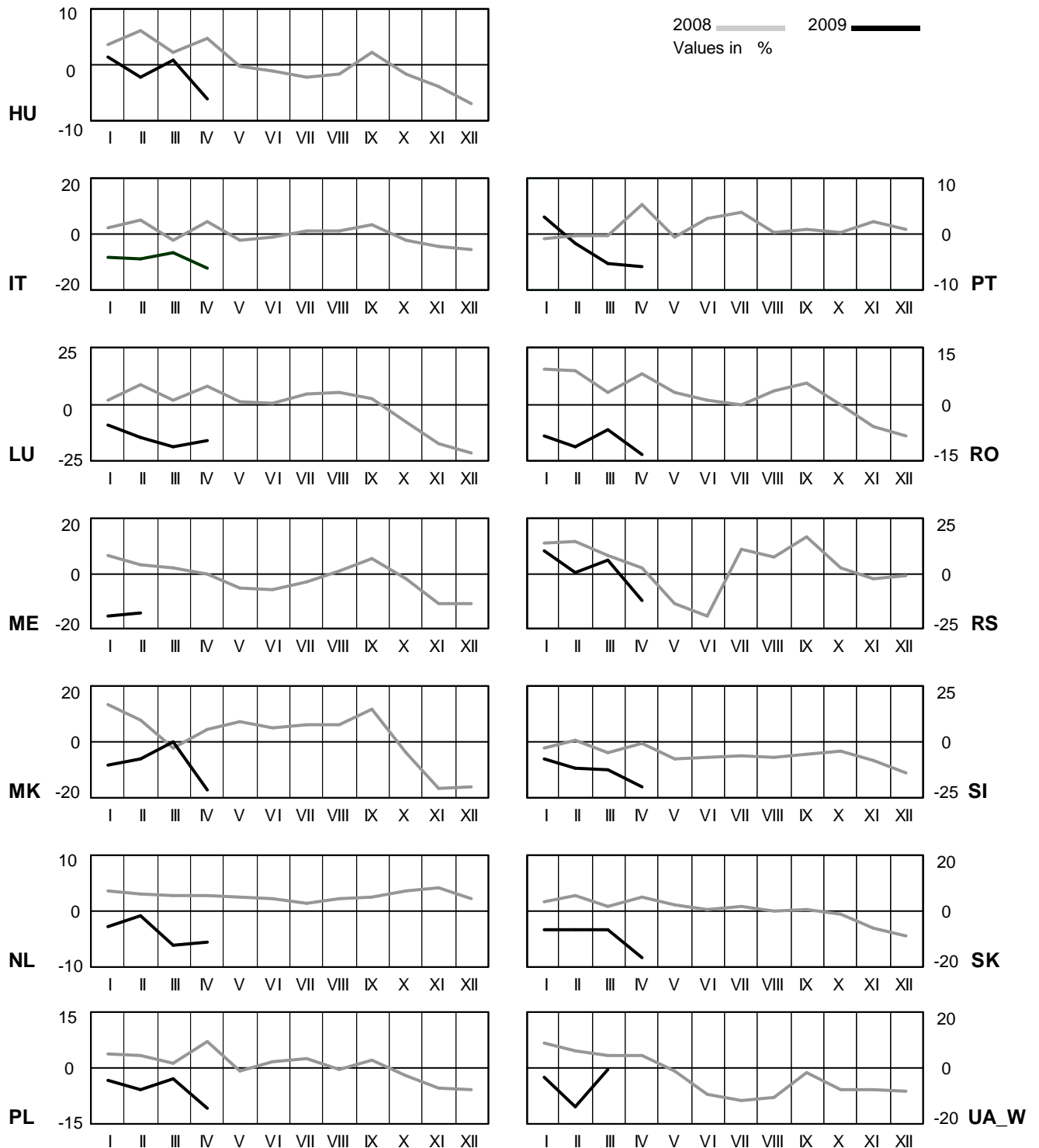
4 Monthly consumption variation

April 2009



4 Monthly consumption variation

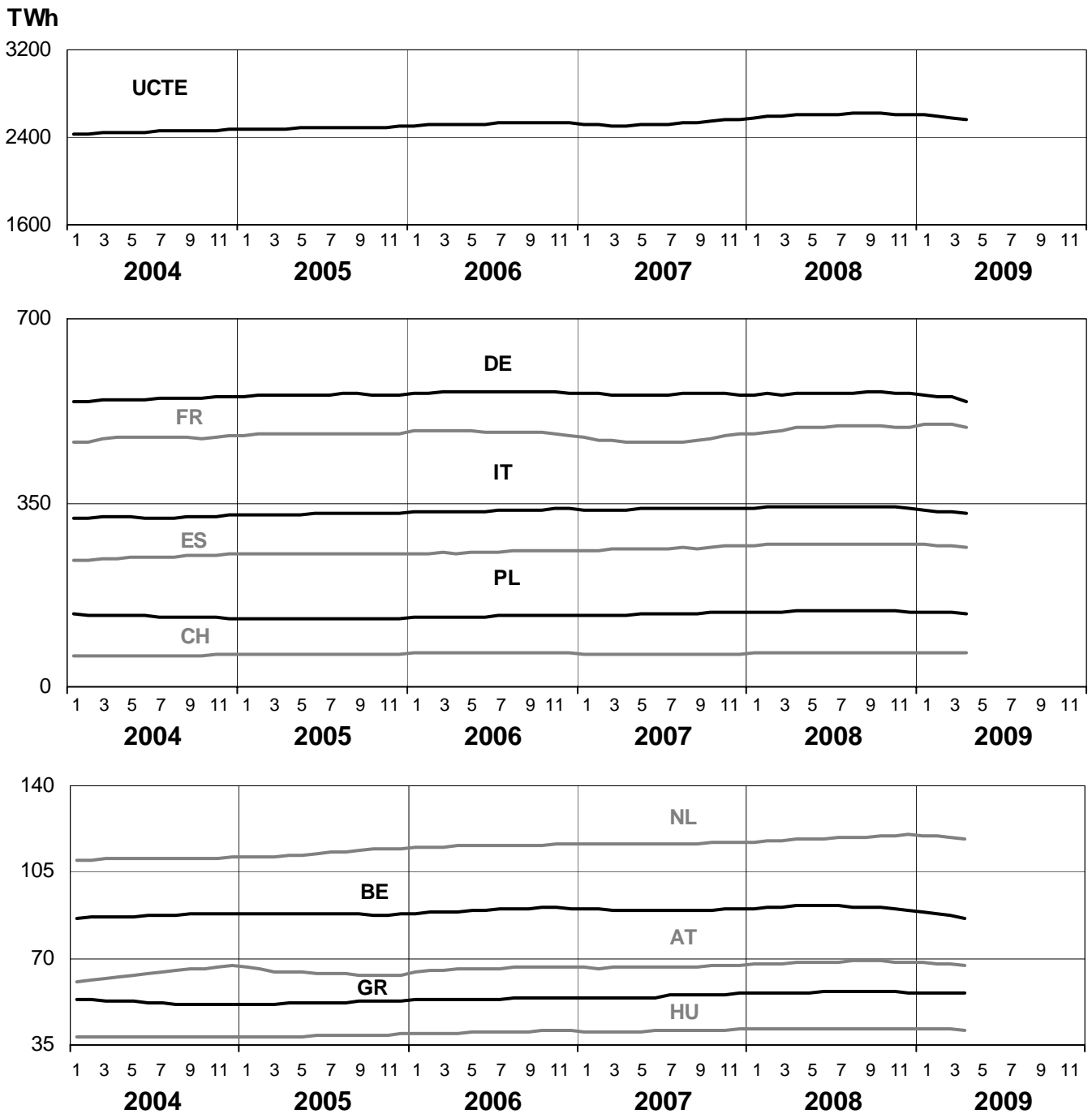
April 2009



5

Consumption of the last 12 months

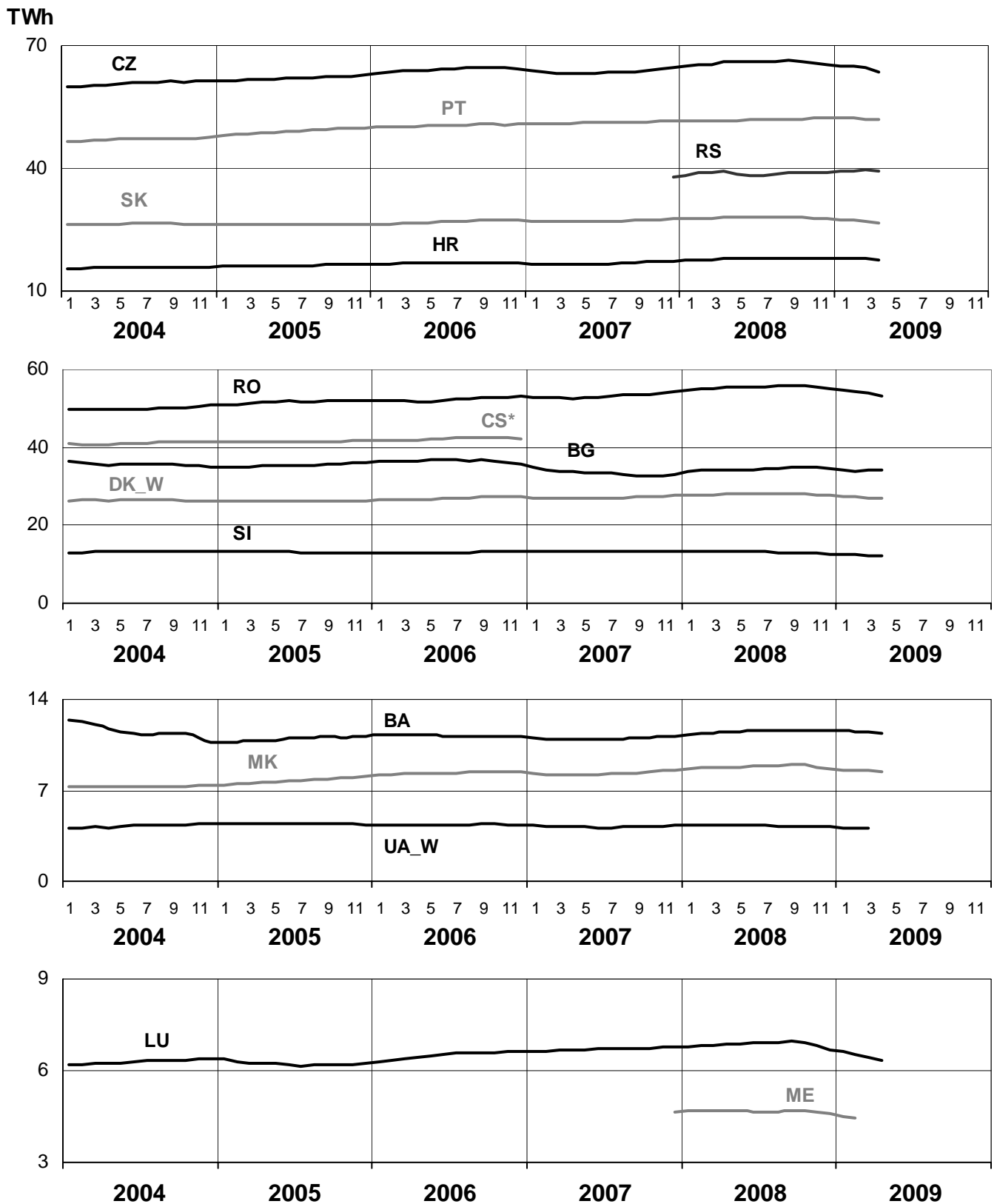
April 2009



5

Consumption of the last 12 months

April 2009

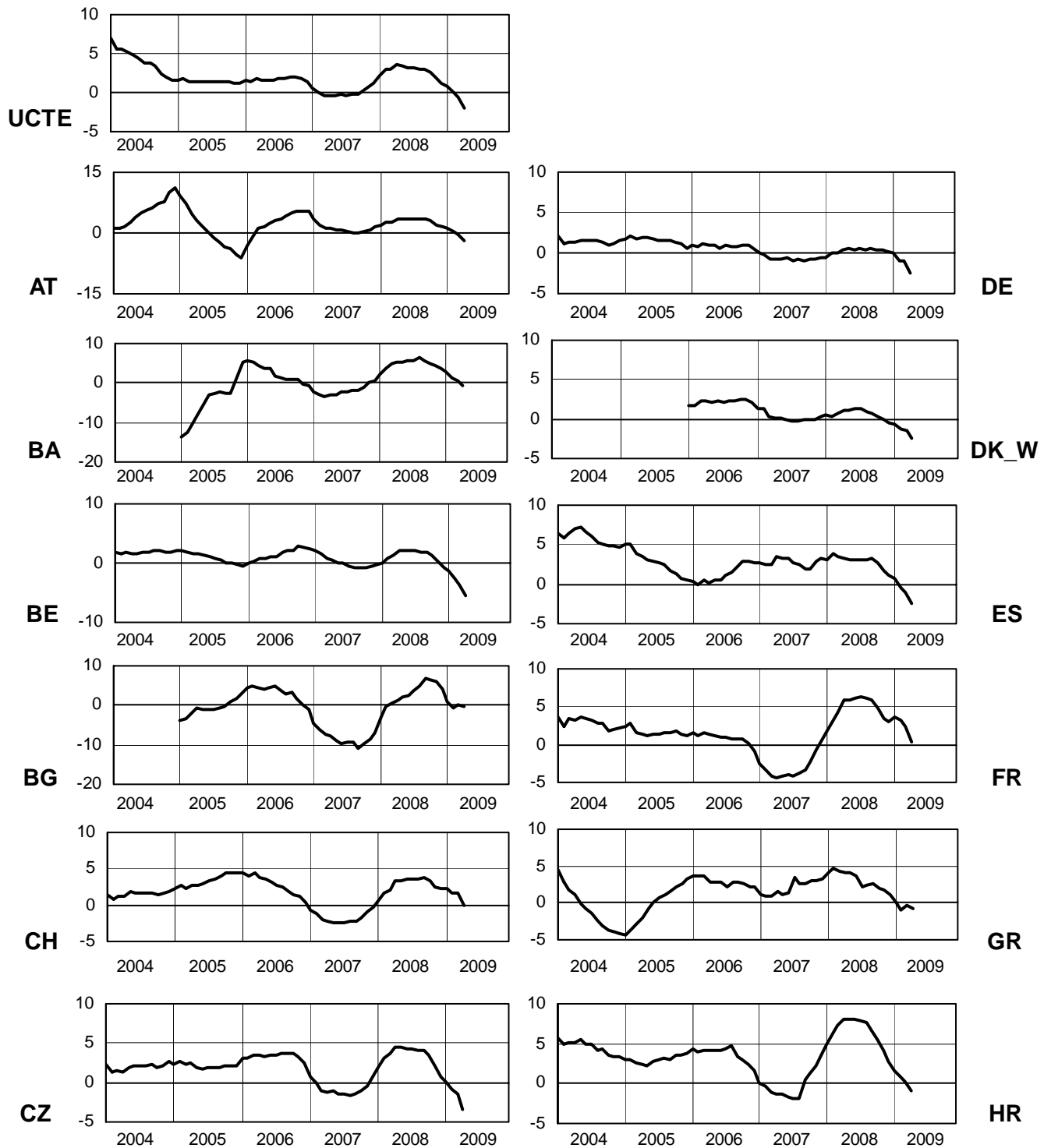


* CS consumption values until December 2006; from 2007 on ME and RS as separate countries

6

Variation of the last 12 months' consumption in %

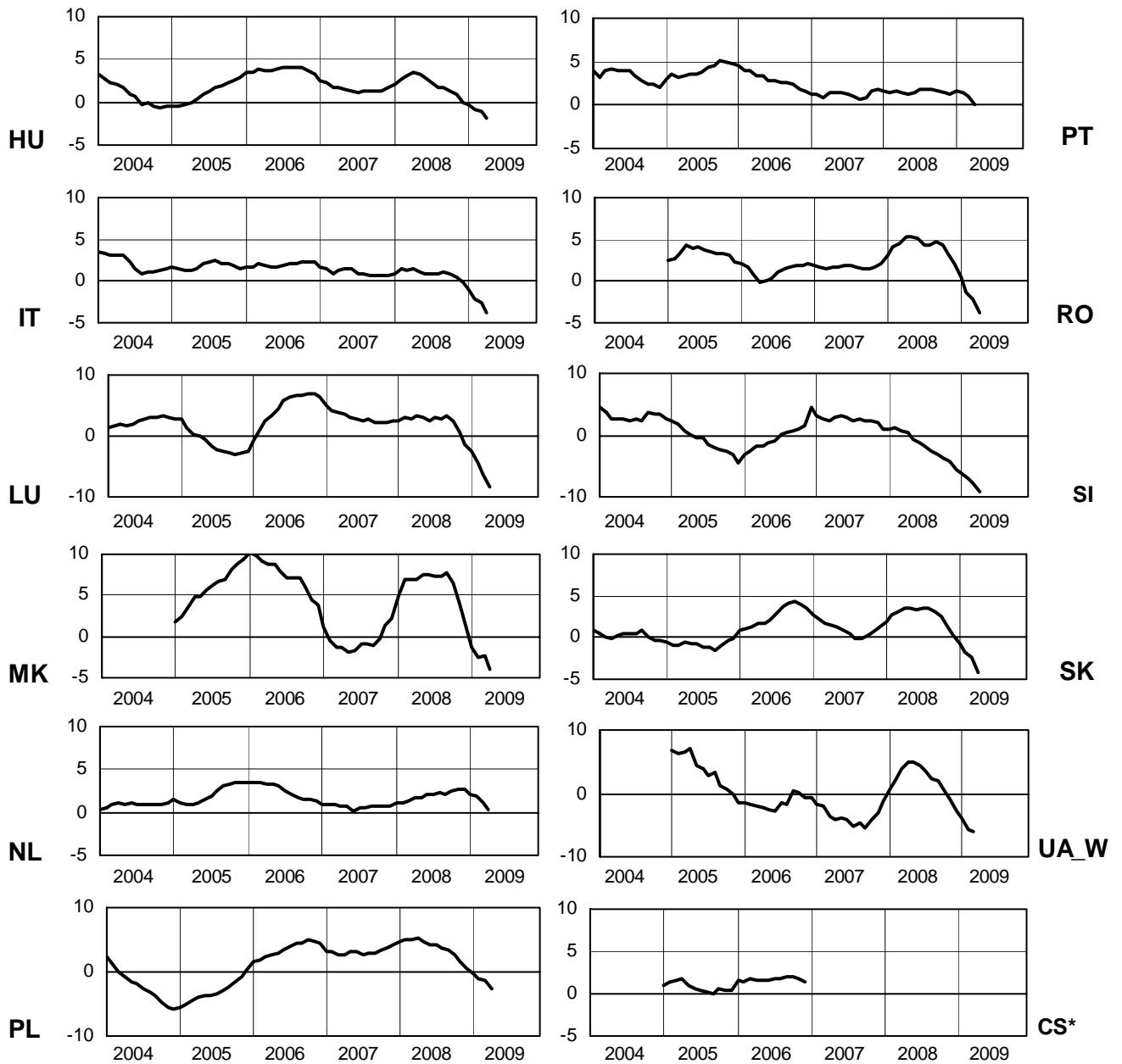
April 2009



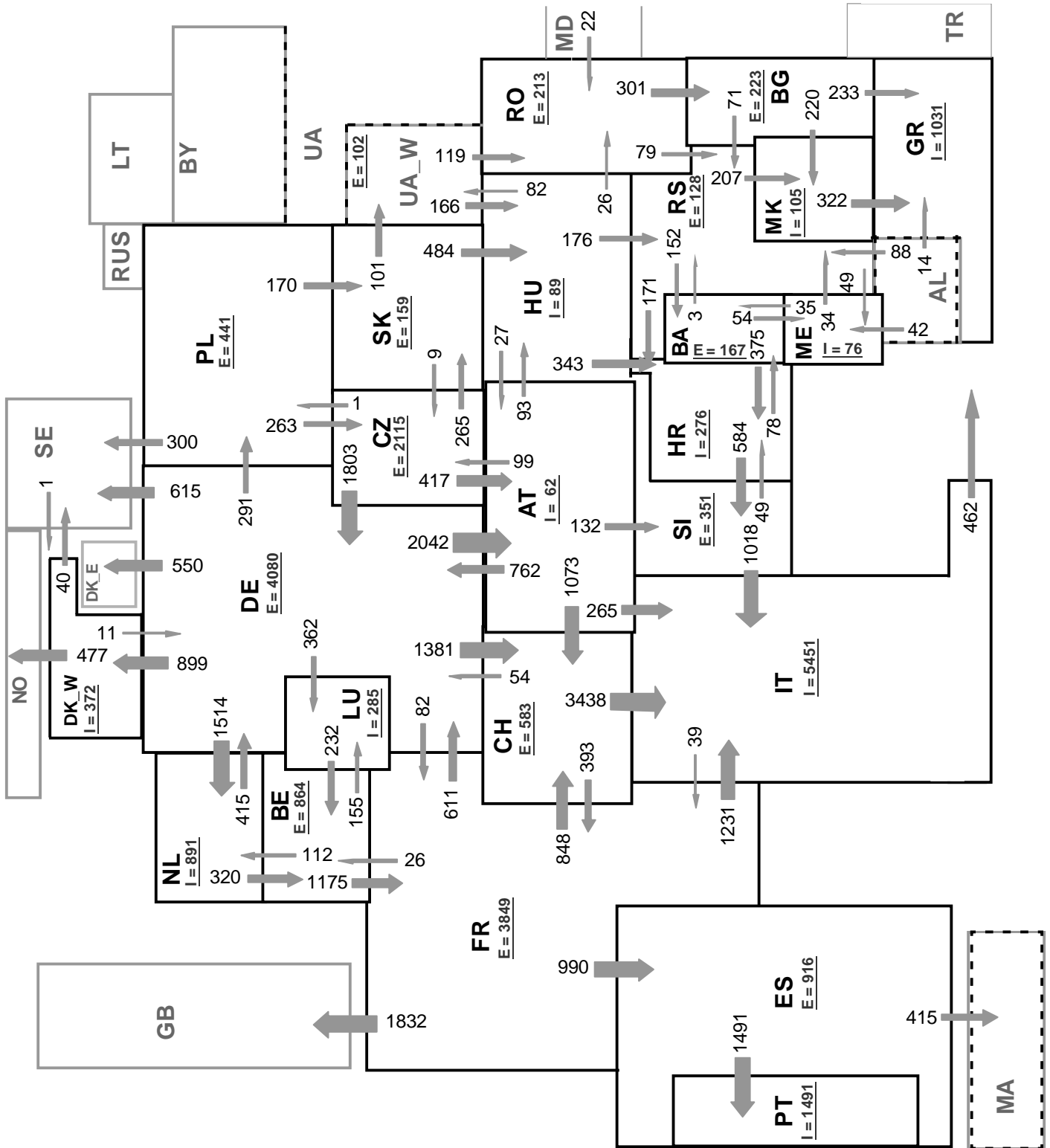
6

Variation of the last 12 months' consumption in %

April 2009



* CS consumption values of the last 12 months until December 2006; variation ME and RS will be published from the second quarter 2009 on



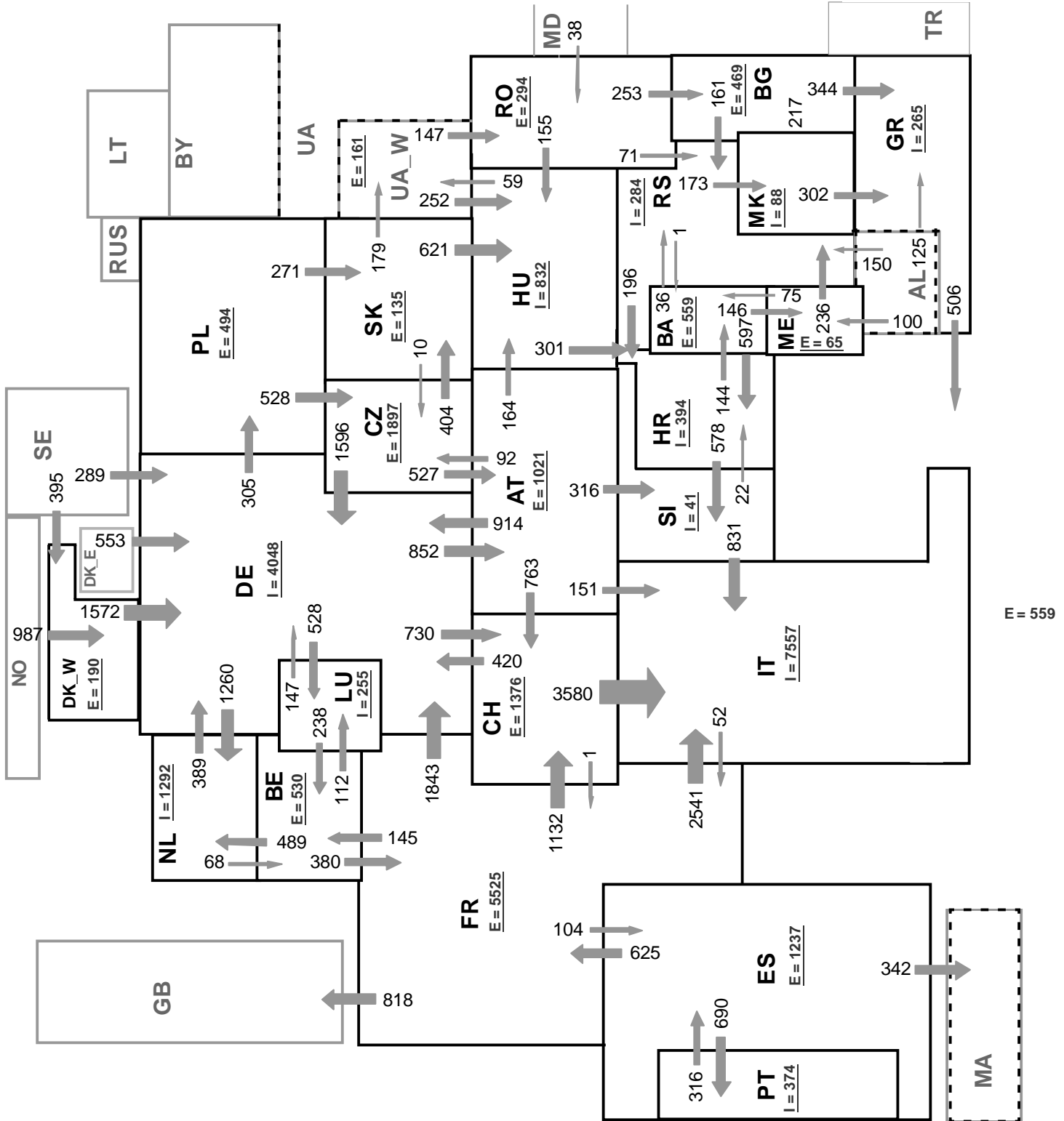
Sum of load flows in MW

UCTE = 29017 MW

Total = 33881 MW

Synchronous operation with UCTE region

I = Import balance
E = Export balance



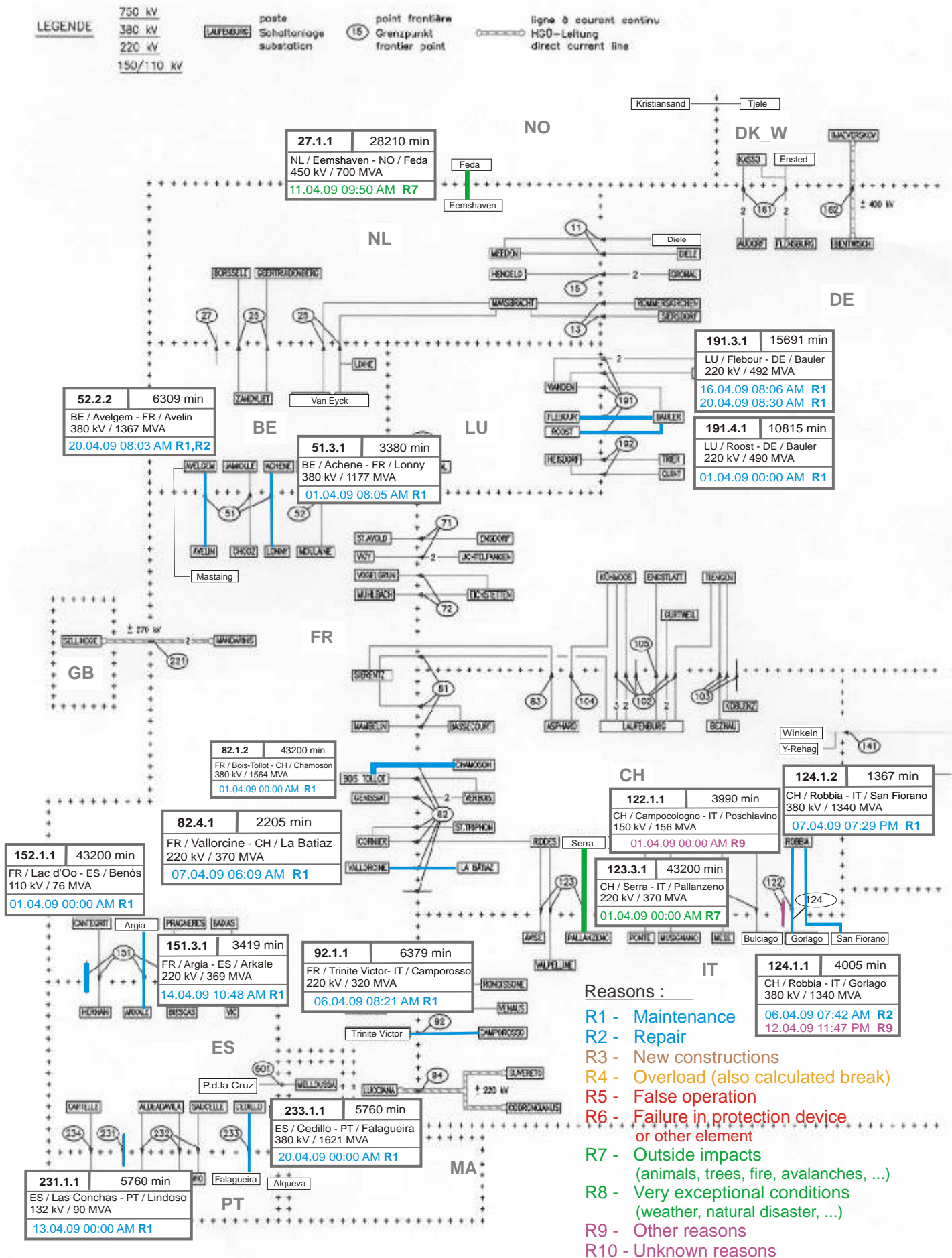
Sum of load flows in MW

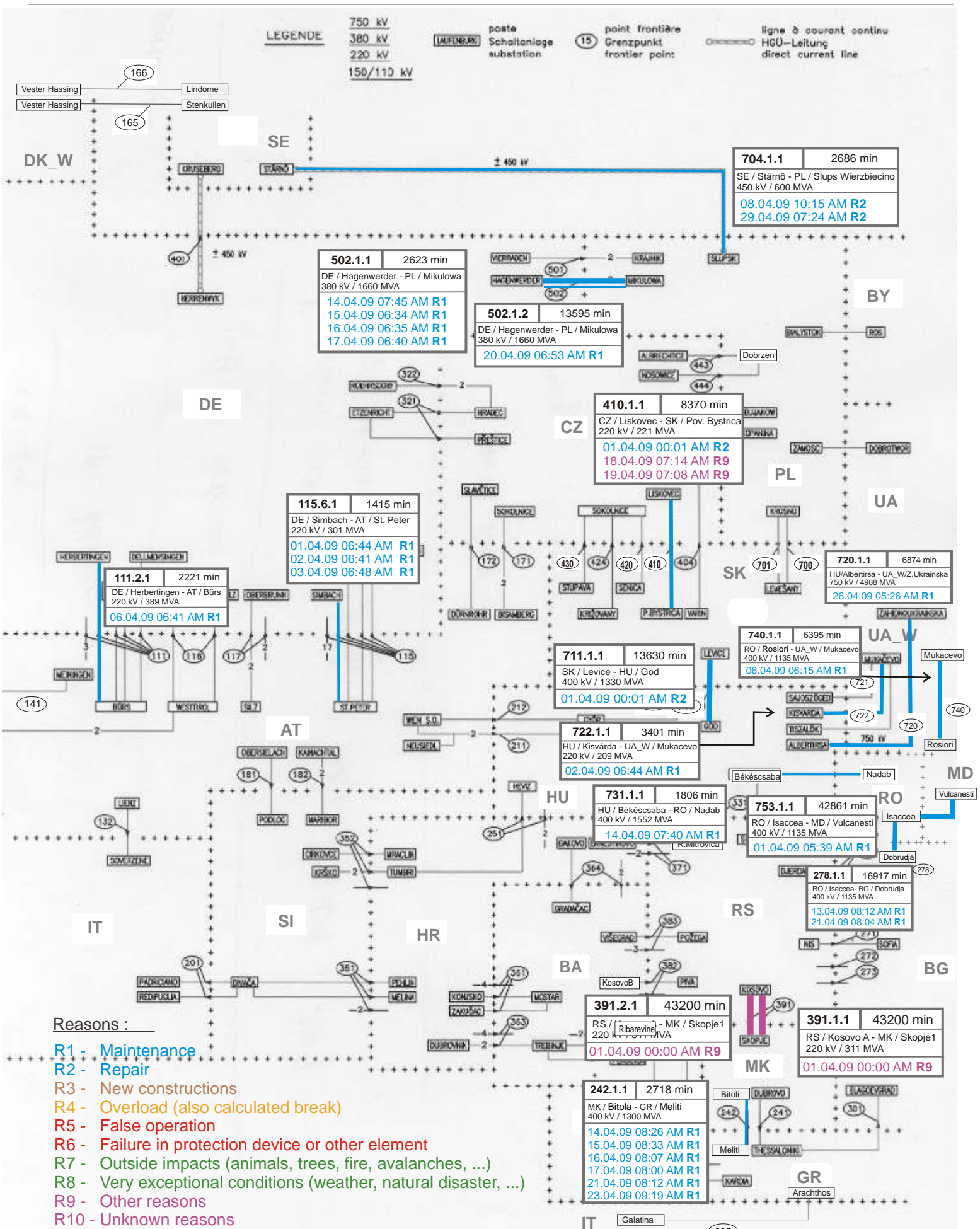
UCTE = 30221 MW

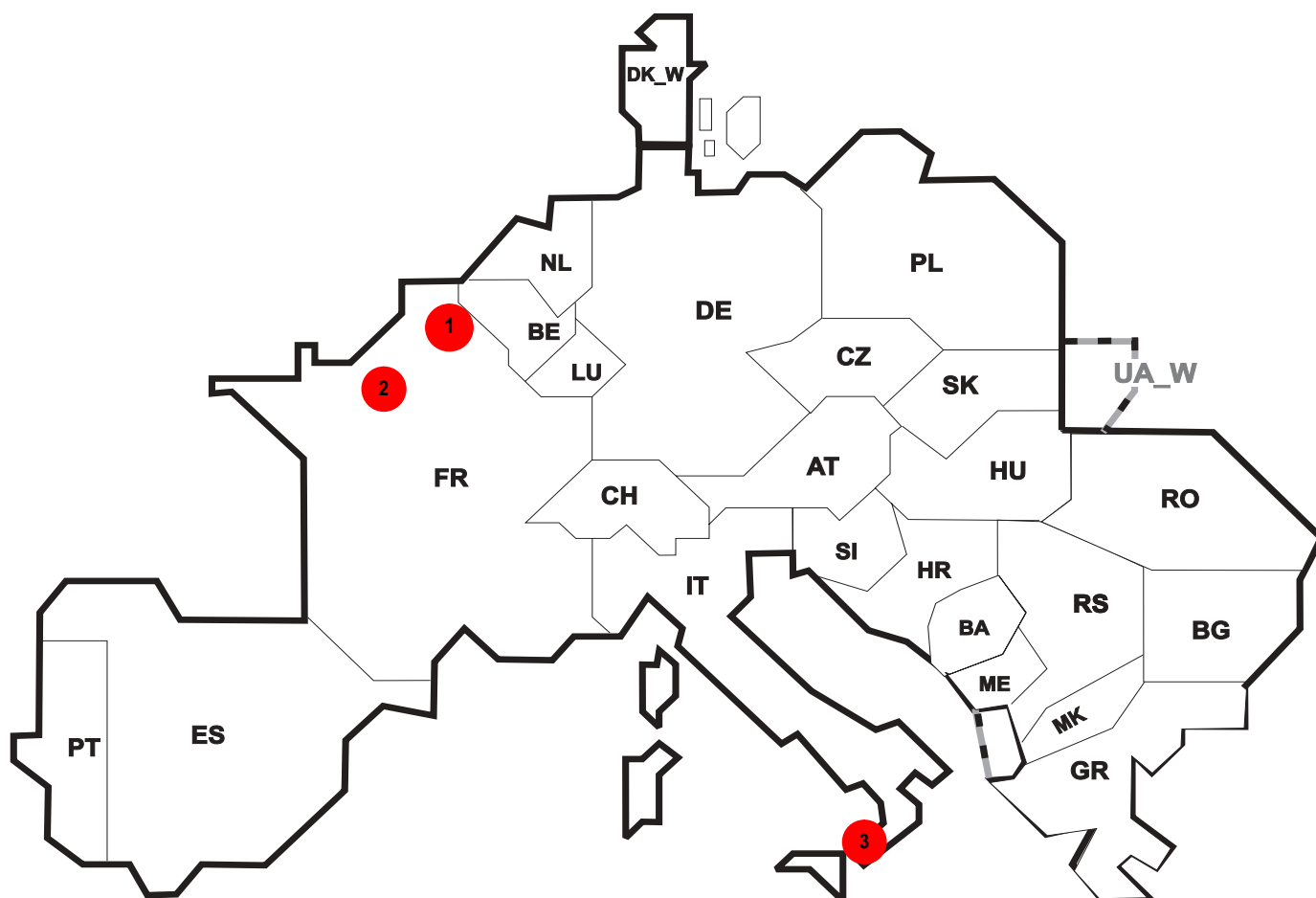
Total = 34655 MW

Synchronous operation with UCTE region

I = Import balance
E = Export balance







Reasons:

R4 Overload (also calculated break)

R5 False operation

R6 Failure in protection device or other element

R7 Outside impacts (animals, trees, fire, avalanches, ...)

R8 Very exceptional conditions (weather, natural disaster, ...)

R9 Other reasons

R10 Unknown reasons

No	Country	Substation	Reason	Energy not supplied ² [MWh]	Total loss of power [MW]	Restoration time [min]	Equivalent time of interruption ¹
1	FR	Hellèmes	R5	23	56	25	0,024
2	FR	Vaupalière	R6	15	42	22	0,016
3	IT	Corriolo	R6	8	16	32	0,012

¹ (year [in min] * energy not supplied) / consumption last 12 months

Control area	Export Programs	Import Programs	Export Programs at 03:00	Import Programs at 03:00	Export Programs at 11:00	Import Programs at 11:00
AT	333122	1062448	1220	411	987	728
BA	483491	193247	272	200	406	100
BE	475533	431379	1201	257	1114	499
BG	n.a.	n.a.	n.a.	n.a.	n.a.	n.a.
CH	1980391	1465794	2930	2359	3690	2352
CZ	2182868	763911	2574	419	2712	800
DE	2570022	2267932	3684	2321	634	2284
DK_W	483492	622796	0	1542	1254	380
ES	1131589	603088	1905	1025	1516	300
FR	6309920	3595781	9166	5212	9755	4164
GR	263743	583292	45	963	500	712
HR	246575	453465	258	512	281	668
HU	66135	1004869	898	984	508	1344
IT	176478	4120365	512	5952	52	7609
ME	n.a.	n.a.	n.a.	n.a.	n.a.	n.a.
MK	100	94300	50	154	50	159
NL	701725	1625749	946	1822	1437	2624
PL	356100	179154	325	0	385	0
PT	20042	618249	0	1472	0	392
RO	307040	247966	281	74	373	89
RS	324238	270496	295	130	359	423
SI	541168	514187	824	568	708	734
SK	480855	194973	462	286	659	451
UA_W	138356	960	101	0	158	0

- Control areas can differ from national borders (i.e. German block which includes parts of AT, LU and DK).

- Values are calculated on an hourly base (MWh).

- This values are not the provisional values entered in the VULCANUS system, but the definitive values after an eventual correction during the actual date.

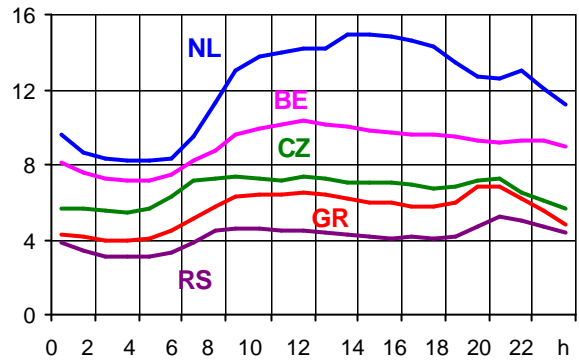
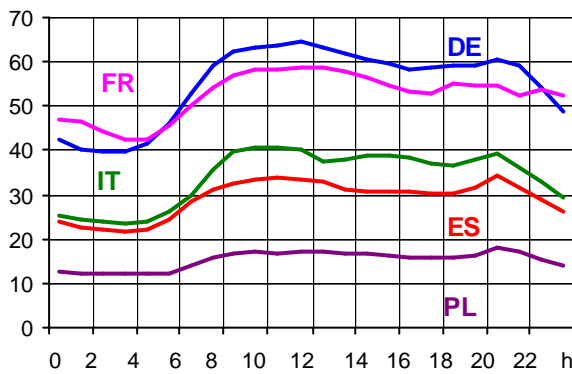
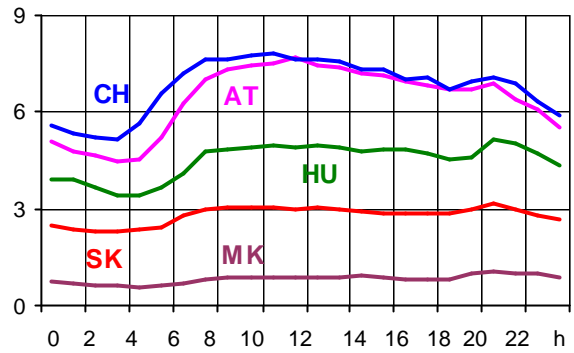
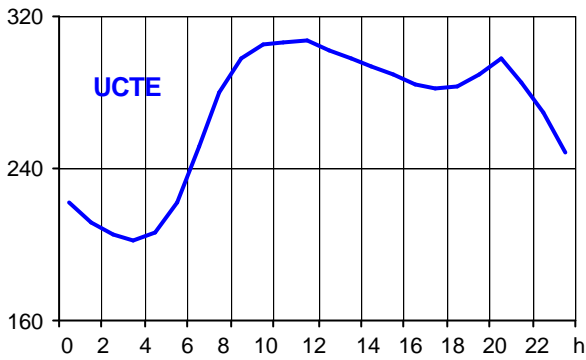
- Export Programs: Sum of all positive values of every hour of every border
 - Import Programs: Sum of all negative values of every hour of every border

- Export Programs at 03:00: Sum of all positive values the third Wednesday from 02:00 to 03:00 a.m.
 - Import Programs at 03:00: Sum of all negative values the third Wednesday from 02:00 to 03:00 a.m.

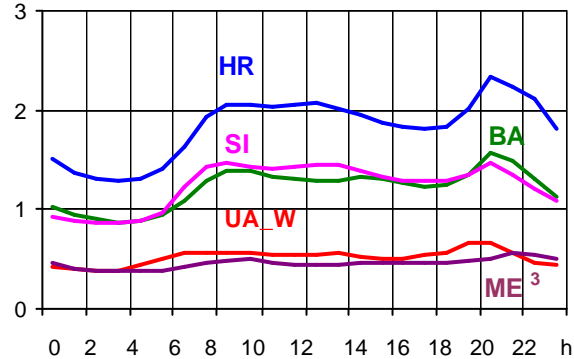
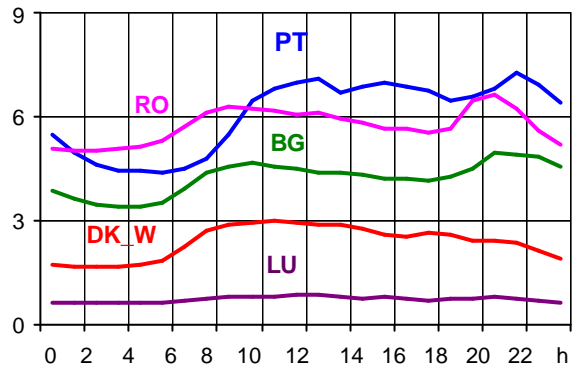
- Export Programs at 11:00: Sum of all positive values the third Wednesday from 10:00 to 11:00 a.m.
 - Import Programs at 11:00: Sum of all negative values the third Wednesday from 10:00 to 11:00 a.m.

Consumption hourly load curves on 15.04.2009 CET

Values in GW



	Highest load		Load representativity %
	MW	var.% ¹	
AT	7694	-4,3	100
BA	1573	-2,7	100
BE ²	10332	-14,8	100
BG	4939	-1,4	99
CH	7796	-14,1	100
CZ	7347	-18,1	100
DE	64623	-14,6	91
DK_W	2972	-7,3	100
ES	34311	-7,1	98
FR	58776	-14,0	100
GR	6874	-3,8	100
HR	2326	-7,5	100
HU	5174	-9,1	100
IT	40831	-13,0	100
LU	872	-4,9	100
ME ³	561	n.a.	100
MK	1054	-9,3	100
NL	14965	-4,1	100
PL ⁴	17898	-10,1	100
PT	7245	-1,0	97
RO	6656	-9,7	100
RS	5234	-4,7	100
SI	1472	-15,5	100
SK	3187	-15,3	100
UCTE	307670	-11,3	
UA_W	666	-13,1	100



¹ Variation as compared to corresponding month of the previous year

² The reported figures are best estimates based on actual measurements and extrapolations.

³ Highest load value as of April 2008

⁴ Operational data

Contact

Boulevard Saint-Michel 15
B-1040 Brussels – Belgium

Tel + 32 2 737 1580

Fax + 32 2 741 69 49

info@entsoe.eu

www.entsoe.eu

