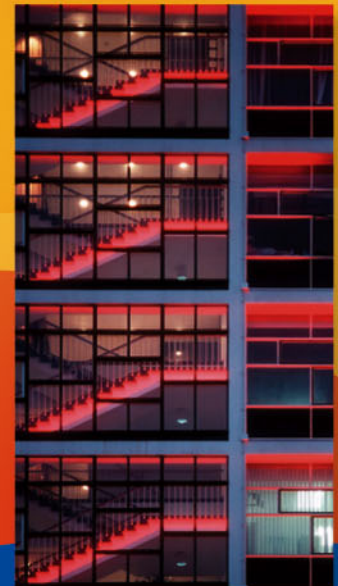
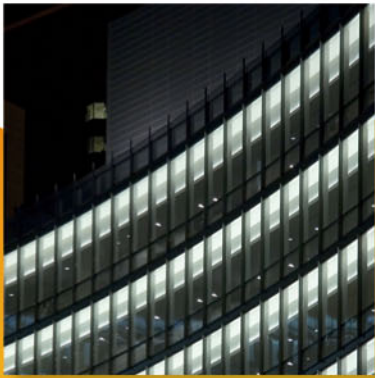


# UCTE



## April 2006

Monthly provisional values  
union for the co-ordination of transmission of electricity

| <b>Table of contents</b> |                                                            | <b>Page</b> |
|--------------------------|------------------------------------------------------------|-------------|
| 1                        | Electricity supply situation of the countries              | 2           |
| 2                        | Physical energy flows                                      | 3           |
| 3                        | Monthly consumption                                        | 4           |
| 4                        | Monthly consumption variation                              | 6           |
| 5                        | Consumption of the last 12 months                          | 8           |
| 6                        | Variation of the last 12 months' consumption               | 10          |
| 7                        | Load flows (night)                                         | 12          |
| 8                        | Load flows (day)                                           | 13          |
| 9                        | Unavailability of international tie lines ( major events ) | 14          |
| 10                       | Network reliability ( major events )                       | 16          |
| 11                       | Scheduled exchanges                                        | 17          |
| 12                       | Load on the 3 <sup>rd</sup> Wednesday                      | 18          |

#### **General remarks and abbreviations used in the tables**

- All values of production and consumption in chapter 1, 3&4, 5&6 and 12 are calculated to represent 100% of the national values.
- DK\_W Denmark West represents the Western part of Denmark synchronously interconnected with UCTE (Jutland and Funen).
- UA\_W Ukraine West represents the so-called Burshtyn Island synchronously interconnected with UCTE.
- CET Central European Time

| Countries       | Net production in GWh |              |              |              |               |              |                           | Exchange balance<br>in GWh | Pump<br>in GWh | Consumption in GWh |             |                |            |
|-----------------|-----------------------|--------------|--------------|--------------|---------------|--------------|---------------------------|----------------------------|----------------|--------------------|-------------|----------------|------------|
|                 | Therm. nuclear        | Therm conv.  | Hydro prod   | Other renew. | Of which wind | Not identify | Total                     |                            |                | monthly            | var. [%]    | last 12 months | var. [%]   |
| AT              | 0                     | 1492         | 3301         | 0            | 0             | 634          | 5427 <sup>1</sup>         | 100                        | 261            | 5266               | 1,7         | 65520          | 1,6        |
| BA              | 0                     | 373          | 827          | 0            | 0             | 0            | 1200                      | -353                       | 0              | 847                | -4,0        | 11228          | 3,7        |
| BE <sup>2</sup> | 3751                  | 2189         | 146          | 176          | 18            | 0            | 6262 <sup>1</sup>         | 1089                       | 139            | 7212               | 2,0         | 88027          | 0,2        |
| BG              | 1677                  | 1208         | 606          | 0            | 0             | 0            | 3491                      | -725                       | 31             | 2735               | -1,6        | 36592          | 4,0        |
| CH              | 2331                  | 179          | 2202         | 83           | 0             | 0            | 4795 <sup>1</sup>         | 361                        | 168            | 4988               | -1,7        | 63515          | 3,7        |
| CS              | 0                     | 2044         | 1228         | 0            | 0             | 0            | 3272 <sup>1</sup>         | 116                        | 135            | 3253               | 0,8         | 41935          | 1,2        |
| CZ              | 2313                  | 3257         | 494          | 9            | 2             | 0            | 6073 <sup>1</sup>         | -894                       | 56             | 5123               | 2,2         | 63795          | 3,4        |
| DE              | 13453                 | 27582        | 2311         | 3151         | 2152          | 0            | 46497 <sup>1</sup>        | -1369                      | 604            | 44524              | -1,2        | 558249         | 0,6        |
| ES              | 3551                  | 10682        | 2903         | 2295         | 1783          | 0            | 19431 <sup>1</sup>        | 38                         | 317            | 19152              | -2,7        | 250962         | -1,2       |
| FR              | 35880                 | 2063         | 6870         | 407          | 129           | 0            | 45220                     | -7230                      | 605            | 37385              | -3,3        | 485769         | 1,1        |
| GR              | 0                     | 2790         | 667          | 92           | 85            | 0            | 3549 <sup>1</sup>         | 310                        | 26             | 3833               | -3,9        | 53218          | 2,8        |
| HR              | 0                     | 261          | 730          | 1            | 1             | 0            | 992 <sup>1</sup>          | 304                        | 7              | 1289               | 1,7         | 16739          | 4,1        |
| HU <sup>3</sup> | 944                   | 1608         | 0            | 0            | 0             | 0            | 2552 <sup>1</sup>         | 597                        | 0              | 3149               | 1,1         | 39805          | 3,7        |
| IT              | 0                     | 17247        | 3313         | 688          | 272           | 0            | 21248 <sup>1</sup>        | 4726                       | 737            | 25237              | -1,2        | 331874         | 2,0        |
| LU              | 0                     | 271          | 76           | 9            | 4             | 0            | 356                       | 277                        | 95             | 538                | 7,8         | 6452           | 3,3        |
| MK              | 0                     | 347          | 174          | 0            | 0             | 0            | 521 <sup>1</sup>          | 119                        | 0              | 640                | 4,7         | 8288           | 8,9        |
| NL              | 324                   | 6262         | 0            | 607          | 210           | 0            | 7193 <sup>1</sup>         | 2106                       | 0              | 9299               | 1,0         | 115555         | 3,4        |
| PL              | 0                     | 11614        | 396          | 25           | 18            | 0            | 12035 <sup>1</sup>        | -1260                      | 131            | 10644              | 3,0         | 133133         | 2,6        |
| PT              | 0                     | 2098         | 1095         | 349          | 189           | 0            | 3542 <sup>1</sup>         | 280                        | 39             | 3783               | -1,1        | 50406          | 3,8        |
| RO              | 372                   | 2407         | 1693         | 0            | 0             | 0            | 4472 <sup>1</sup>         | -305                       | 30             | 4137               | -4,1        | 51674          | -0,1       |
| SI              | 107                   | 313          | 380          | 0            | 0             | 0            | 800                       | 204                        | 0              | 1004               | -2,4        | 12931          | -1,7       |
| SK              | 1103                  | 374          | 643          | 1            | 0             | 236          | 2357 <sup>1</sup>         | -168                       | 21             | 2168               | 4,1         | 26585          | 1,5        |
| <b>UCTE</b>     | <b>65806</b>          | <b>96661</b> | <b>30055</b> | <b>7893</b>  | <b>4863</b>   | <b>870</b>   | <b>201285<sup>1</sup></b> | <b>-1677</b>               | <b>3402</b>    | <b>196206</b>      | <b>-1,1</b> | <b>2512252</b> | <b>1,3</b> |
| DK_W            | 0                     | 1537         | 3            | 510          | 387           | 0            | 2050 <sup>1</sup>         | -343                       | 0              | 1707               | 1,1         | 21584          | 2,2        |
| UA_W            | 0                     | 674          | 19           | 0            | 0             | 0            | 693 <sup>1</sup>          | -339                       | 0              | 354                | 0,3         | 4340           | -2,4       |

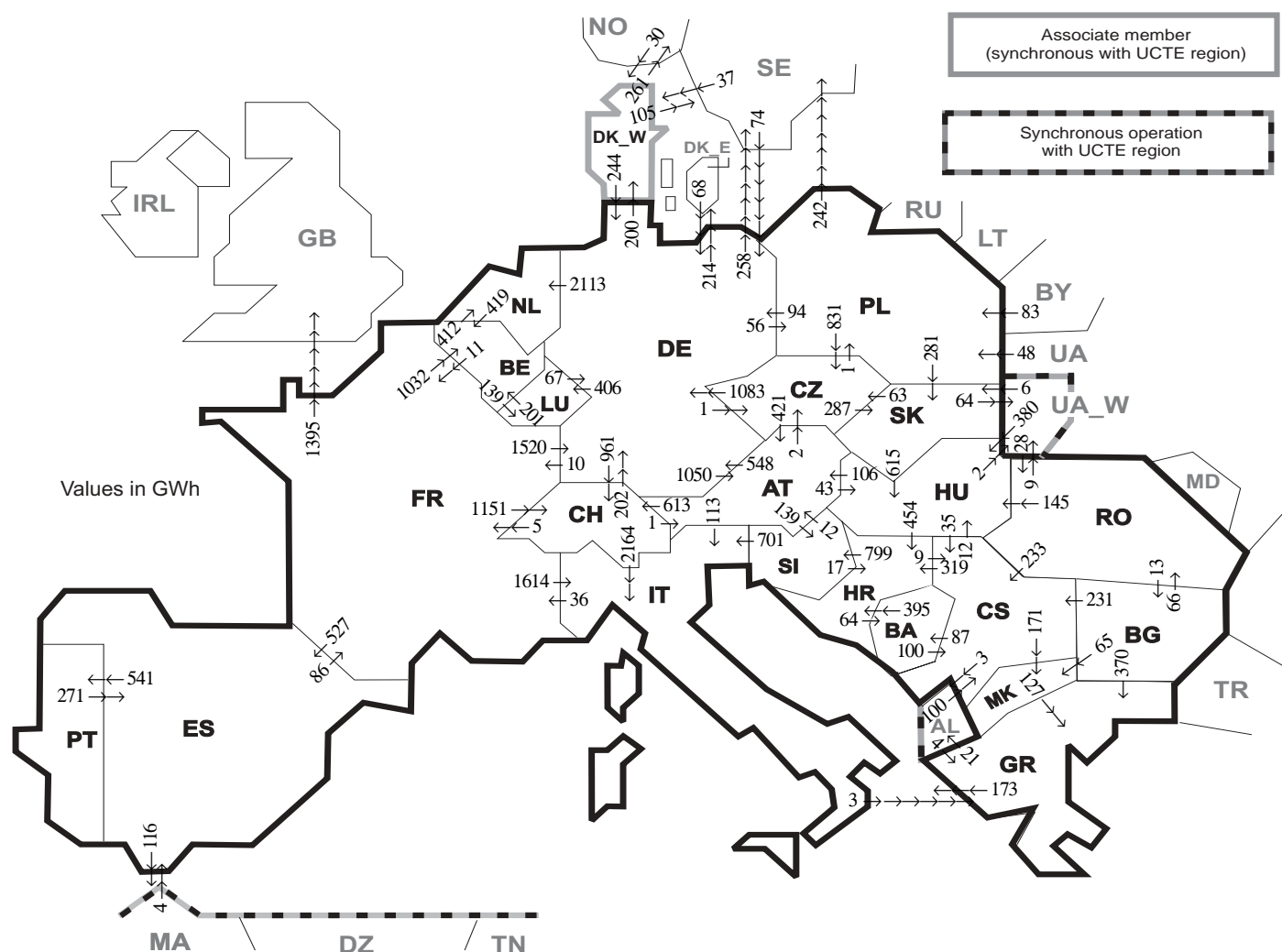
<sup>1</sup> Including deliveries from industry

<sup>2</sup> The reported figures are best estimates based on actual measurements and extrapolations.

<sup>3</sup> Data on hydro, other renewable, not clearly identifiable production are not yet available.

All representativities of the national production and consumption values used to calculate values at a representativity of 100% as stated in the table above

| Countries     | AT  | BA  | BE  | BG  | CH  | CS  | CZ  | DE  | ES  | FR  | GR  | HR  | HU  | IT  | LU  | MK  | NL  | PL  | PT  | RO  | SI  | SK  | DK_W | UA_W |
|---------------|-----|-----|-----|-----|-----|-----|-----|-----|-----|-----|-----|-----|-----|-----|-----|-----|-----|-----|-----|-----|-----|-----|------|------|
| Production    |     |     |     |     |     |     |     |     |     |     |     |     |     |     |     |     |     |     |     |     |     |     |      |      |
| Therm.nuclear | 100 | 100 | 100 | 100 | 100 | 100 | 100 | 100 | 100 | 100 | 100 | 100 | 100 | 100 | 100 | 100 | 100 | 100 | 100 | 100 | 100 | 100 | 100  | 100  |
| Thermal conv. | 100 | 100 | 100 | 100 | 100 | 100 | 100 | 100 | 97  | 100 | 100 | 100 | 100 | 100 | 100 | 100 | 100 | 100 | 93  | 100 | 100 | 100 | 100  | 100  |
| Hydro prod    | 100 | 100 | 100 | 100 | 100 | 100 | 100 | 100 | 100 | 100 | 100 | 100 | 100 | 100 | 100 | 100 | 100 | 100 | 100 | 100 | 100 | 100 | 100  | 100  |
| Other renew.  | 100 | 100 | 100 | 100 | 100 | 100 | 100 | 100 | 95  | 100 | 100 | 100 | 100 | 100 | 100 | 100 | 100 | 100 | 100 | 100 | 100 | 100 | 100  | 100  |
| Not identify  | 100 | 100 | 100 | 100 | 100 | 100 | 100 | 100 | 100 | 100 | 100 | 100 | 100 | 100 | 100 | 100 | 100 | 100 | 100 | 100 | 100 | 100 | 100  | 100  |
| Consumption   | 100 | 100 | 100 | 100 | 100 | 100 | 100 | 100 | 98  | 100 | 100 | 100 | 100 | 100 | 100 | 100 | 100 | 100 | 96  | 100 | 95  | 100 | 100  | 100  |



| Exporting countries    | Importing countries |            |             |           |             |            |            |             |            |            |            |             |             |             |            |            |             |            |            |           | Sum export |            |            |           |             |                        |      |
|------------------------|---------------------|------------|-------------|-----------|-------------|------------|------------|-------------|------------|------------|------------|-------------|-------------|-------------|------------|------------|-------------|------------|------------|-----------|------------|------------|------------|-----------|-------------|------------------------|------|
|                        | AT                  | BA         | BE          | BG        | CH          | CS         | CZ         | DE          | ES         | FR         | GR         | HR          | HU          | IT          | LU         | MK         | NL          | PL         | PT         | RO        |            | SI         | SK         | DK_W      | UA_W        | Other III <sup>1</sup> |      |
| AT                     | -                   | -          | -           | -         | 613         | -          | 2          | 548         | -          | -          | -          | -           | 43          | 113         | -          | -          | -           | -          | -          | -         | 139        | -          | -          | -         | -           | -                      | 1458 |
| BA                     | -                   | -          | -           | -         | -           | 100        | -          | -           | -          | -          | -          | 395         | -           | -           | -          | -          | -           | -          | -          | -         | -          | -          | -          | -         | -           | -                      | 495  |
| BE                     | -                   | -          | -           | -         | -           | -          | -          | -           | -          | 11         | -          | -           | -           | -           | 139        | -          | 412         | -          | -          | -         | -          | -          | -          | -         | -           | -                      | 562  |
| BG                     | -                   | -          | -           | -         | -           | 231        | -          | -           | -          | -          | 370        | -           | -           | -           | -          | 65         | -           | -          | -          | 66        | -          | -          | -          | -         | -           | 0                      | 732  |
| CH                     | 1                   | -          | -           | -         | -           | -          | -          | 202         | -          | 5          | -          | -           | -           | 2164        | -          | -          | -           | -          | -          | -         | -          | -          | -          | -         | -           | -                      | 2372 |
| CS                     | -                   | 87         | -           | 0         | -           | -          | -          | -           | -          | -          | -          | 319         | 12          | -           | -          | 171        | -           | -          | -          | 0         | -          | -          | -          | -         | -           | 3                      | 592  |
| CZ                     | 421                 | -          | -           | -         | -           | -          | -          | 1083        | -          | -          | -          | -           | -           | -           | -          | -          | -           | 1          | -          | -         | 287        | -          | -          | -         | -           | -                      | 1792 |
| DE                     | 1050                | -          | -           | -         | 961         | -          | 1          | -           | -          | 10         | -          | -           | -           | -           | 406        | -          | 2113        | 56         | -          | -         | -          | 200        | -          | -         | 472         | 5269                   |      |
| ES                     | -                   | -          | -           | -         | -           | -          | -          | -           | -          | 86         | -          | -           | -           | -           | -          | -          | -           | -          | 541        | -         | -          | -          | -          | -         | 116         | 743                    |      |
| FR                     | -                   | -          | 1032        | -         | 1151        | -          | -          | 1520        | 527        | -          | -          | -           | -           | 1614        | -          | -          | -           | -          | -          | -         | -          | -          | -          | -         | 1395        | 7239                   |      |
| GR                     | -                   | -          | -           | 0         | -           | -          | -          | -           | -          | -          | -          | -           | -           | -           | -          | 0          | -           | -          | -          | -         | -          | -          | -          | -         | 21          | 194                    |      |
| HR                     | -                   | 64         | -           | -         | 9           | -          | -          | -           | -          | -          | -          | -           | 0           | -           | -          | -          | -           | -          | -          | -         | 799        | -          | -          | -         | -           | 872                    |      |
| HU                     | 106                 | -          | -           | -         | -           | 35         | -          | -           | -          | -          | -          | 454         | -           | -           | -          | -          | -           | -          | -          | 0         | 0          | -          | 2          | -         | -           | 597                    |      |
| IT                     | 0                   | -          | -           | -         | 0           | -          | -          | -           | -          | 36         | 3          | -           | -           | -           | -          | -          | -           | -          | -          | -         | 0          | -          | -          | -         | -           | 39                     |      |
| LU                     | -                   | -          | 201         | -         | -           | -          | -          | 67          | -          | -          | -          | -           | -           | -           | -          | -          | -           | -          | -          | -         | -          | -          | -          | -         | -           | 268                    |      |
| MK                     | -                   | -          | -           | 0         | -           | 0          | -          | -           | -          | -          | -          | 127         | -           | -           | -          | -          | -           | -          | -          | -         | -          | -          | -          | -         | -           | 127                    |      |
| NL                     | -                   | -          | 419         | -         | -           | -          | -          | 0           | -          | -          | -          | -           | -           | -           | -          | -          | -           | -          | -          | -         | -          | -          | -          | -         | -           | 419                    |      |
| PL                     | -                   | -          | -           | -         | -           | -          | -          | 831         | 94         | -          | -          | -           | -           | -           | -          | -          | -           | -          | -          | -         | 281        | -          | 0          | 242       | -           | 1448                   |      |
| PT                     | -                   | -          | -           | -         | -           | -          | -          | -           | 271        | -          | -          | -           | -           | -           | -          | -          | -           | -          | -          | -         | -          | -          | -          | -         | -           | 271                    |      |
| RO                     | -                   | -          | -           | 13        | -           | 233        | -          | -           | -          | -          | -          | -           | 145         | -           | -          | -          | -           | -          | -          | -         | -          | -          | 9          | 0         | -           | 400                    |      |
| SI                     | 12                  | -          | -           | -         | -           | -          | -          | -           | -          | -          | -          | 17          | 701         | -           | -          | -          | -           | -          | -          | -         | -          | -          | -          | -         | -           | 730                    |      |
| SK                     | -                   | -          | -           | -         | -           | 63         | -          | -           | -          | -          | -          | -           | 615         | -           | -          | -          | -           | 0          | -          | -         | -          | -          | -          | 64        | -           | 742                    |      |
| DK_W                   | -                   | -          | -           | -         | -           | -          | -          | 244         | -          | -          | -          | -           | -           | -           | -          | -          | -           | -          | -          | -         | -          | -          | -          | -         | 366         | 610                    |      |
| UA_W                   | -                   | -          | -           | -         | -           | -          | -          | -           | -          | -          | -          | 380         | -           | -           | -          | -          | -           | -          | -          | 28        | 6          | -          | -          | -         | -           | 414                    |      |
| Other III <sup>1</sup> | -                   | -          | -           | 0         | 100         | -          | 142        | 4           | 0          | 4          | 4          | -           | -           | -           | -          | -          | -           | 131        | -          | 0         | -          | 67         | -          | -         | -           | 448                    |      |
| <b>Sum imp</b>         | <b>1590</b>         | <b>151</b> | <b>1652</b> | <b>13</b> | <b>2725</b> | <b>708</b> | <b>897</b> | <b>3900</b> | <b>802</b> | <b>148</b> | <b>504</b> | <b>1185</b> | <b>1195</b> | <b>4765</b> | <b>545</b> | <b>236</b> | <b>2525</b> | <b>188</b> | <b>541</b> | <b>94</b> | <b>938</b> | <b>574</b> | <b>267</b> | <b>75</b> | <b>2615</b> | <b>28833</b>           |      |

Sum of physical energy flows between UCTE countries = 24837GWh

Total physical energy flows = 28833GWh

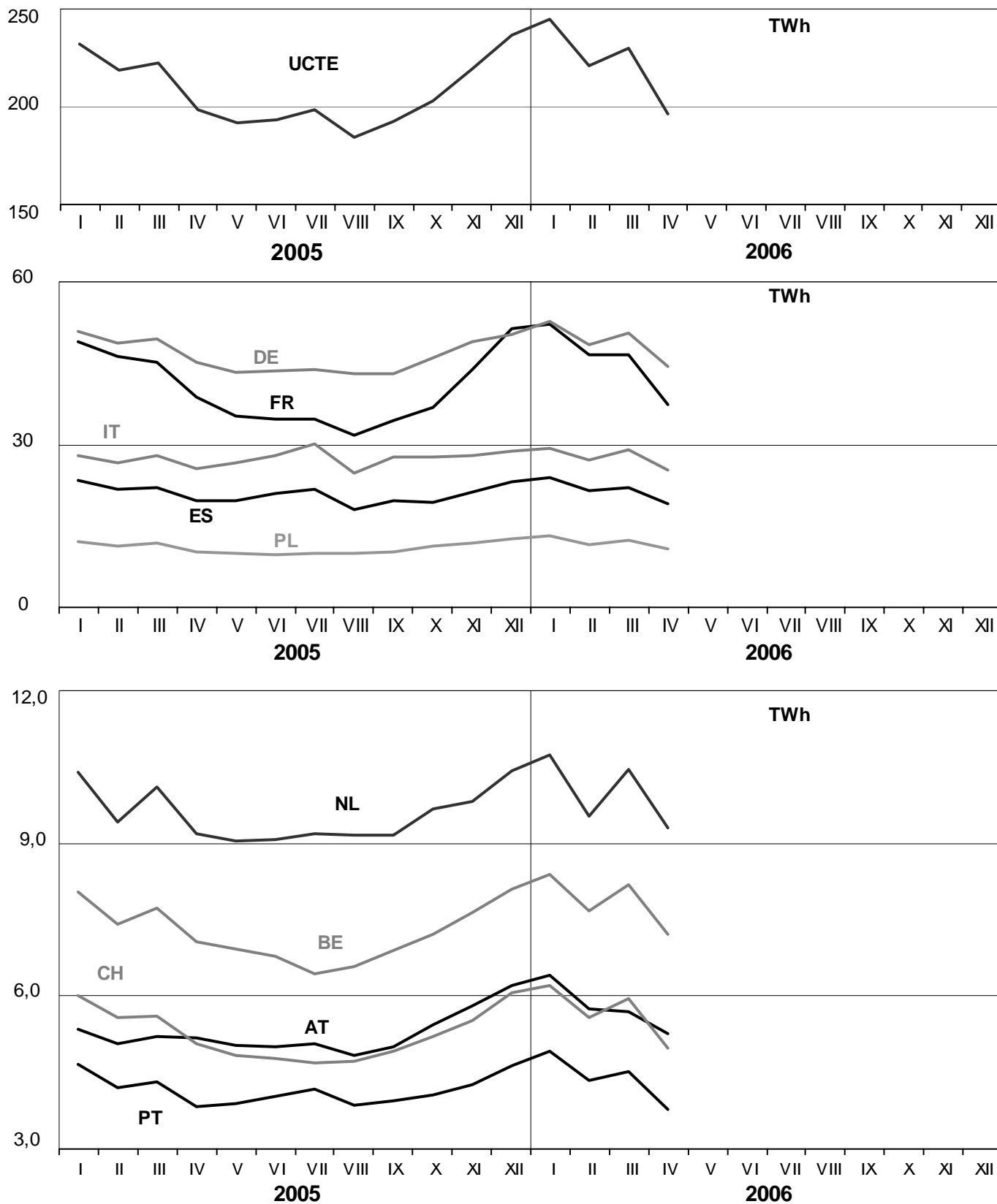
<sup>1</sup> Other III: Albania, Belarus, Denmark East, Great Britain, Morocco, Republic of Moldavia, Norway, Sweden, Republic of Turkey and Ukraina

These physical energy flows were measured on the cross-frontier transmission lines (≤ 110 kV) listed in table 9 of the Statistical Yearbook. These values may differ from the official statistics and the exchange balances in chapter 1.

# 3

## Monthly consumption

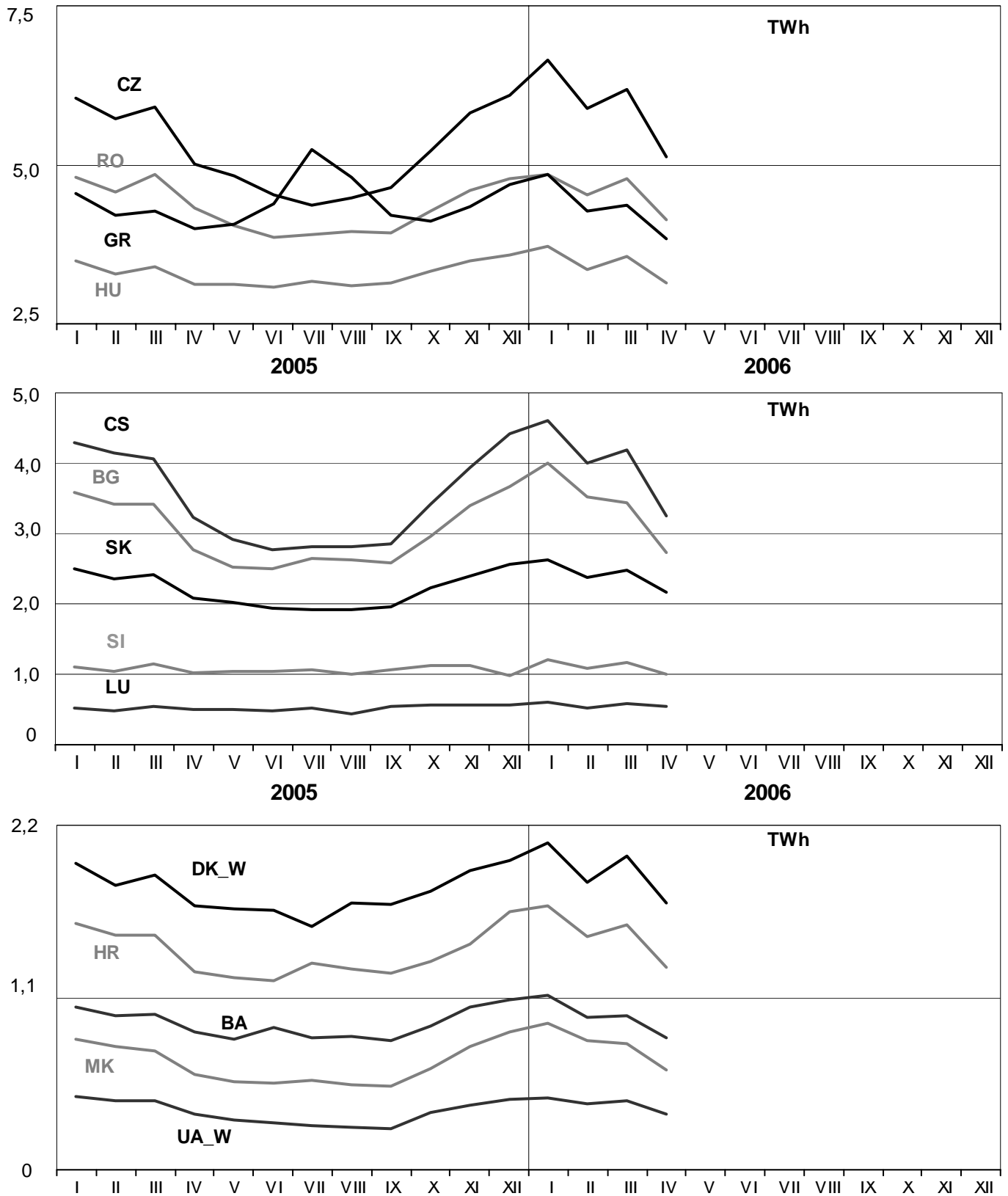
April 2006



# 3

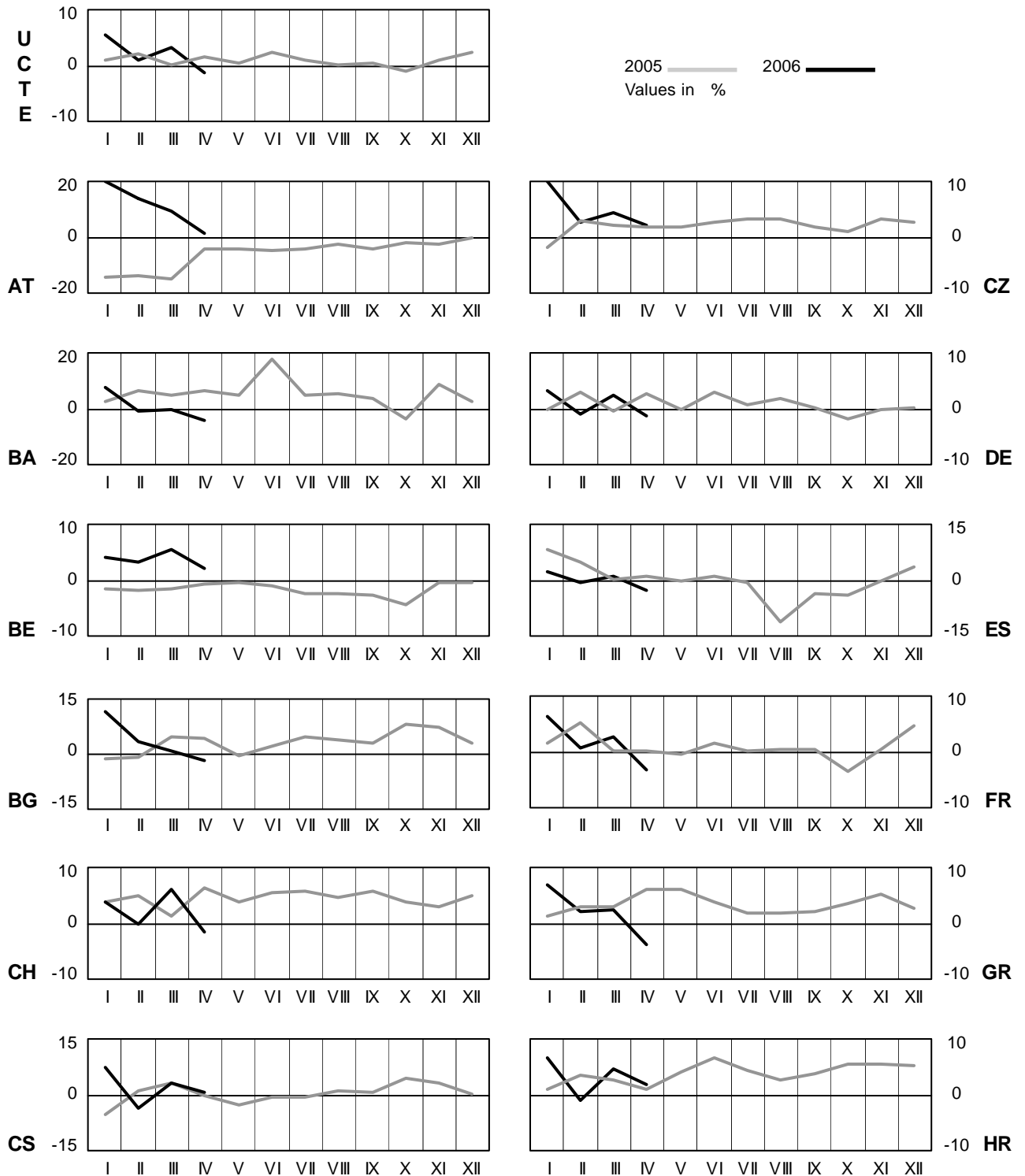
## Monthly consumption

April 2006



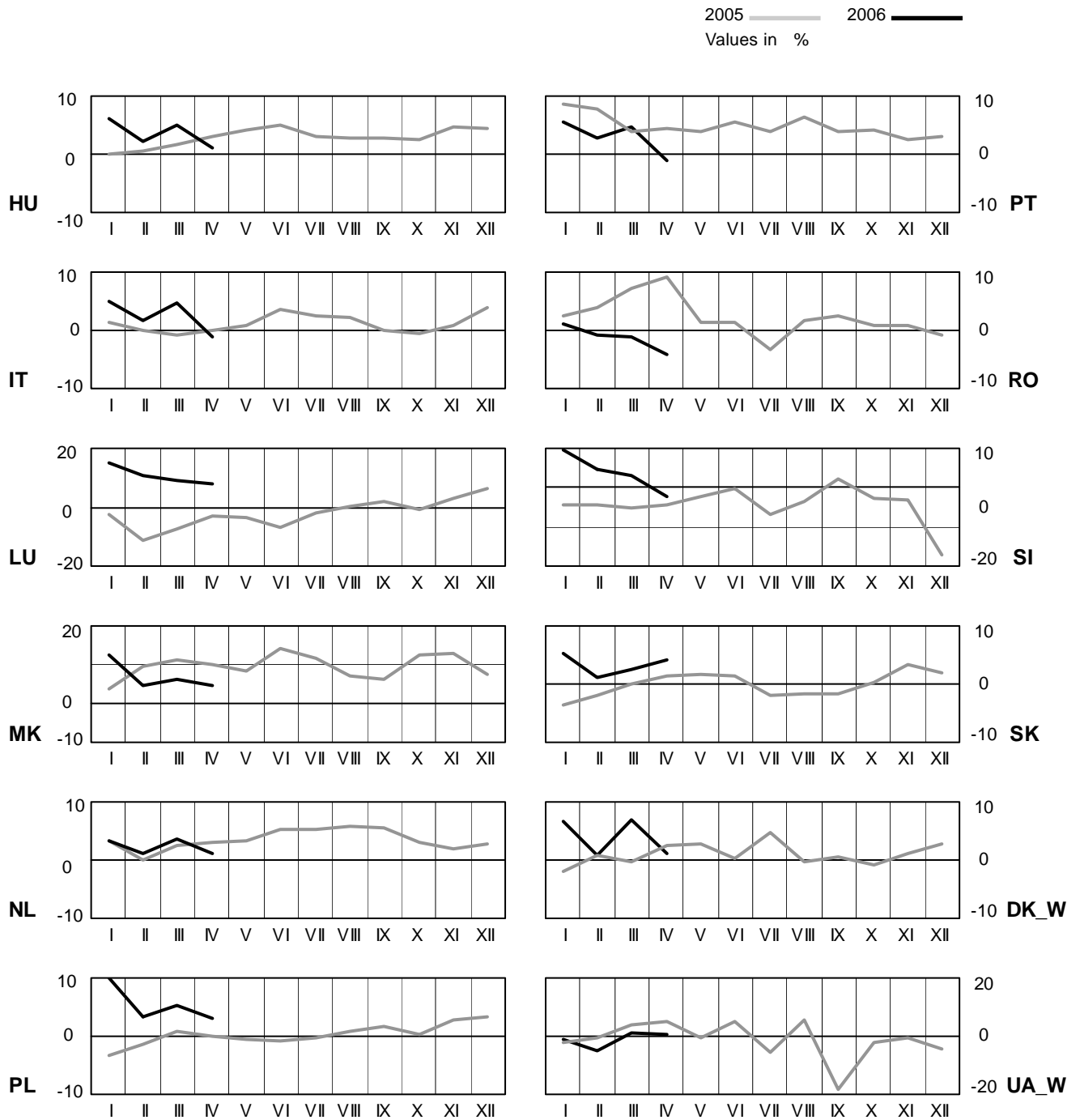
# 4 Monthly consumption variation

April 2006

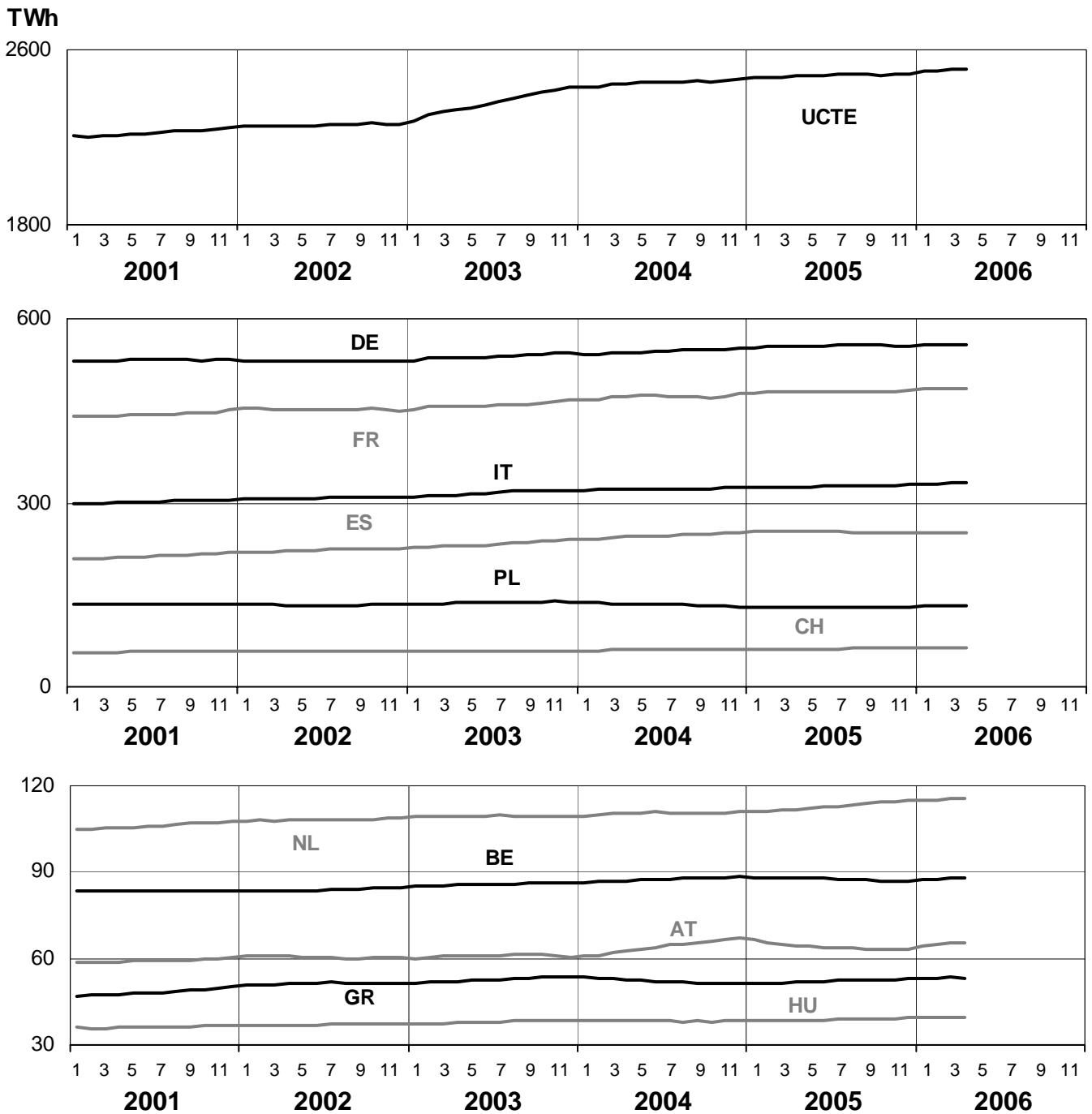


# 4 Monthly consumption variation

April 2006



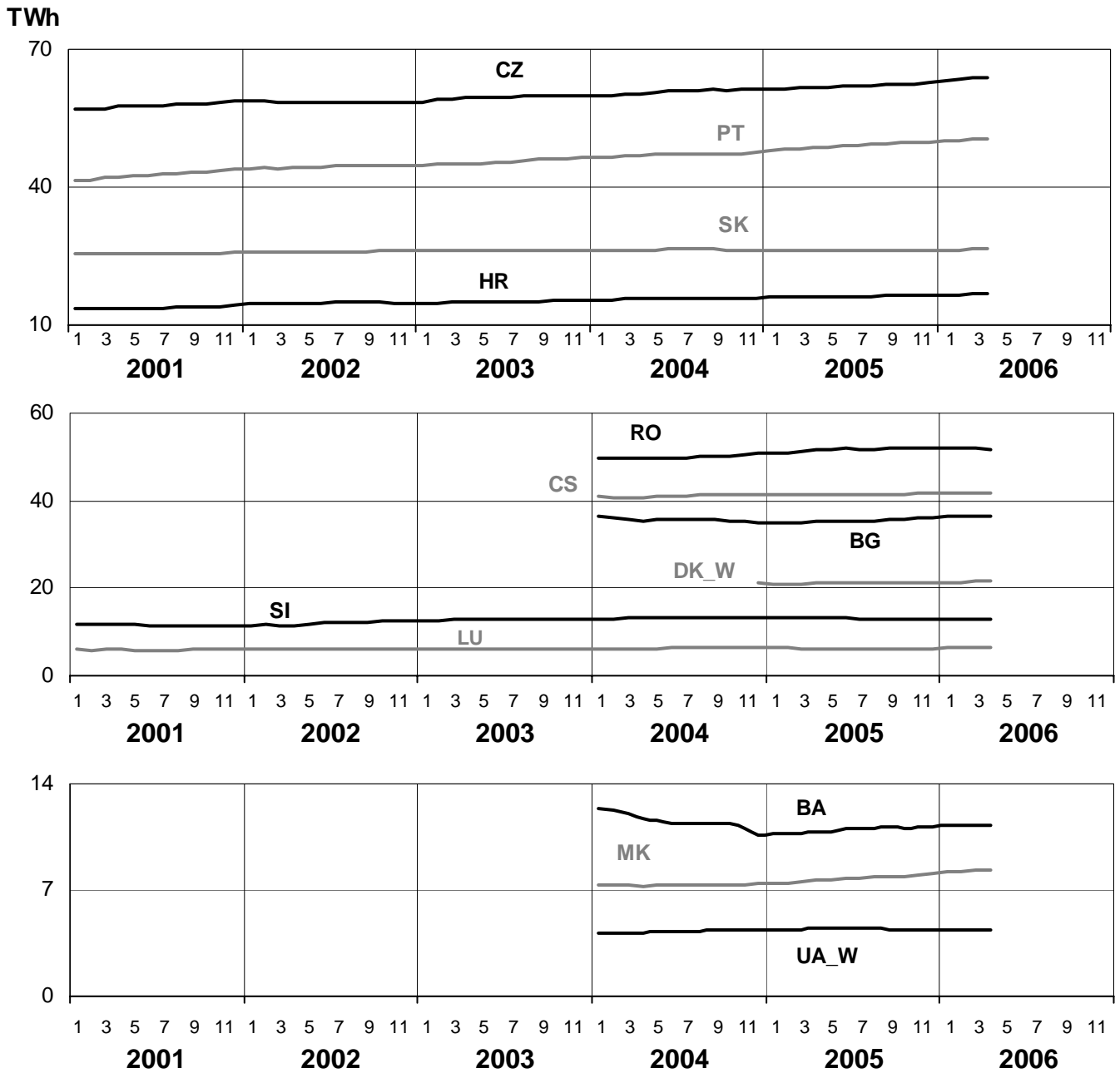




# 5

## Consumption of the last 12 months

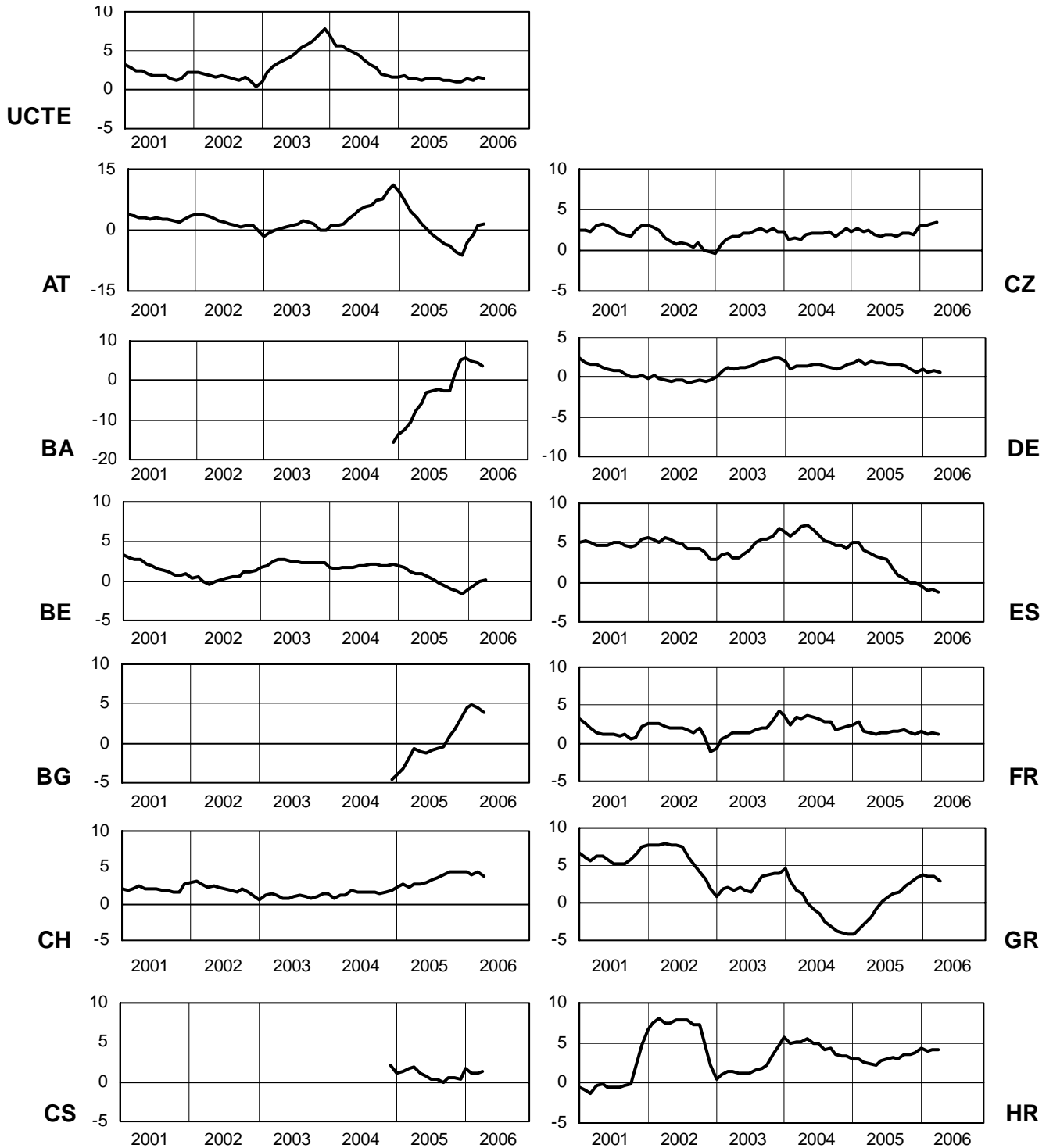
April 2006



# 6

## Variation of the last 12 months' consumption in %

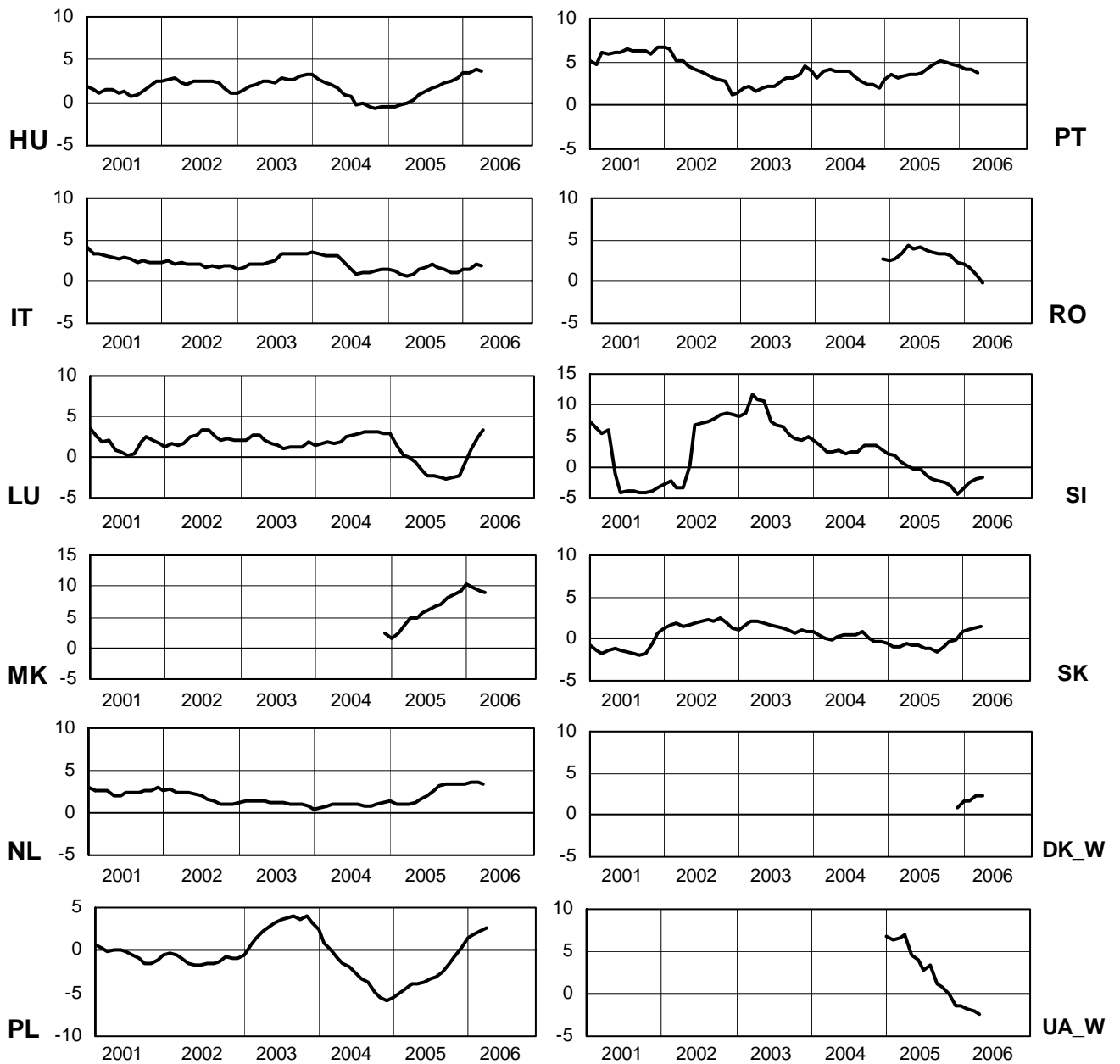
April 2006

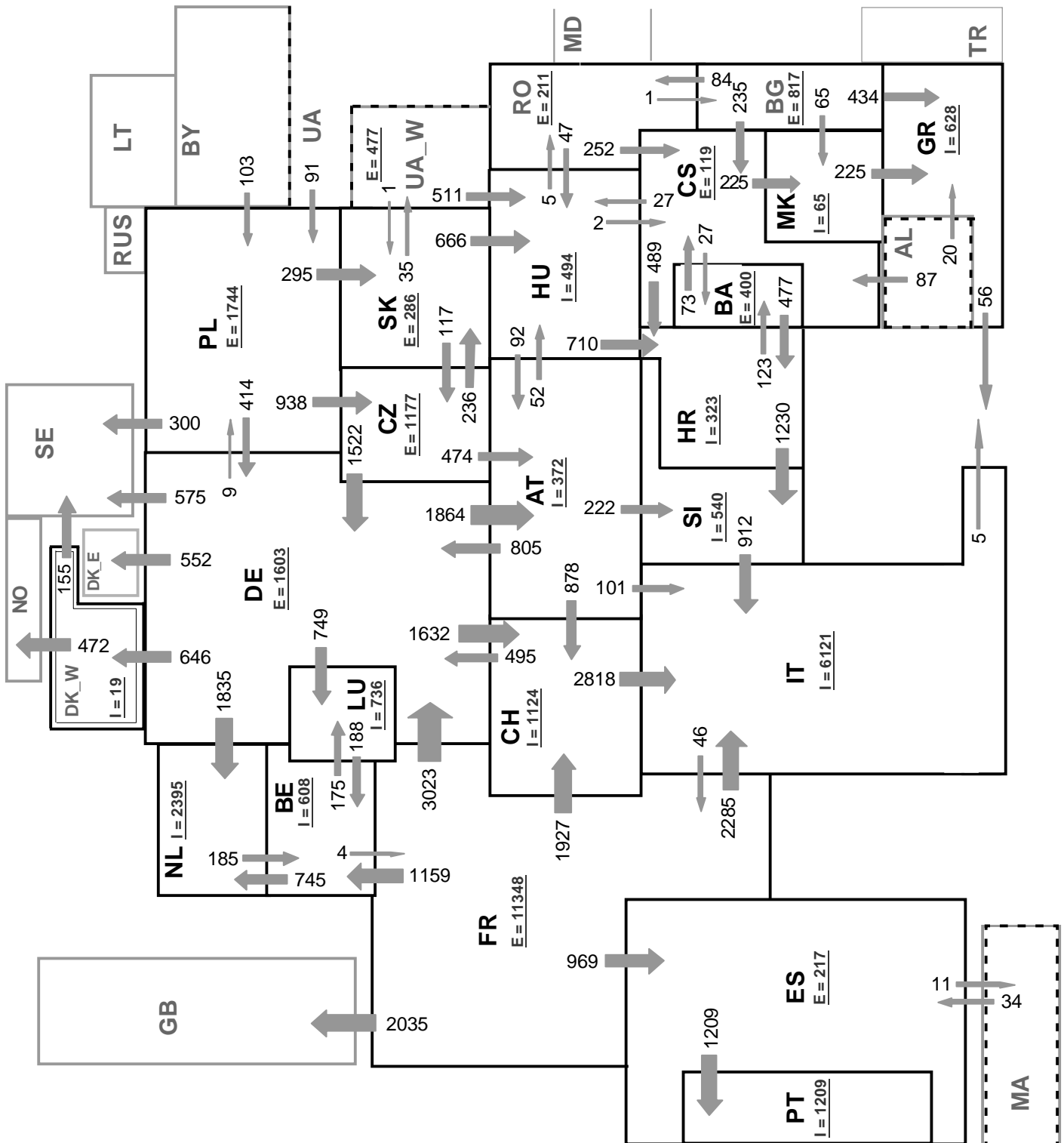


# 6

## Variation of the last 12 months' consumption in %

April 2006





Associate member

Synchronous operation with UCTE region

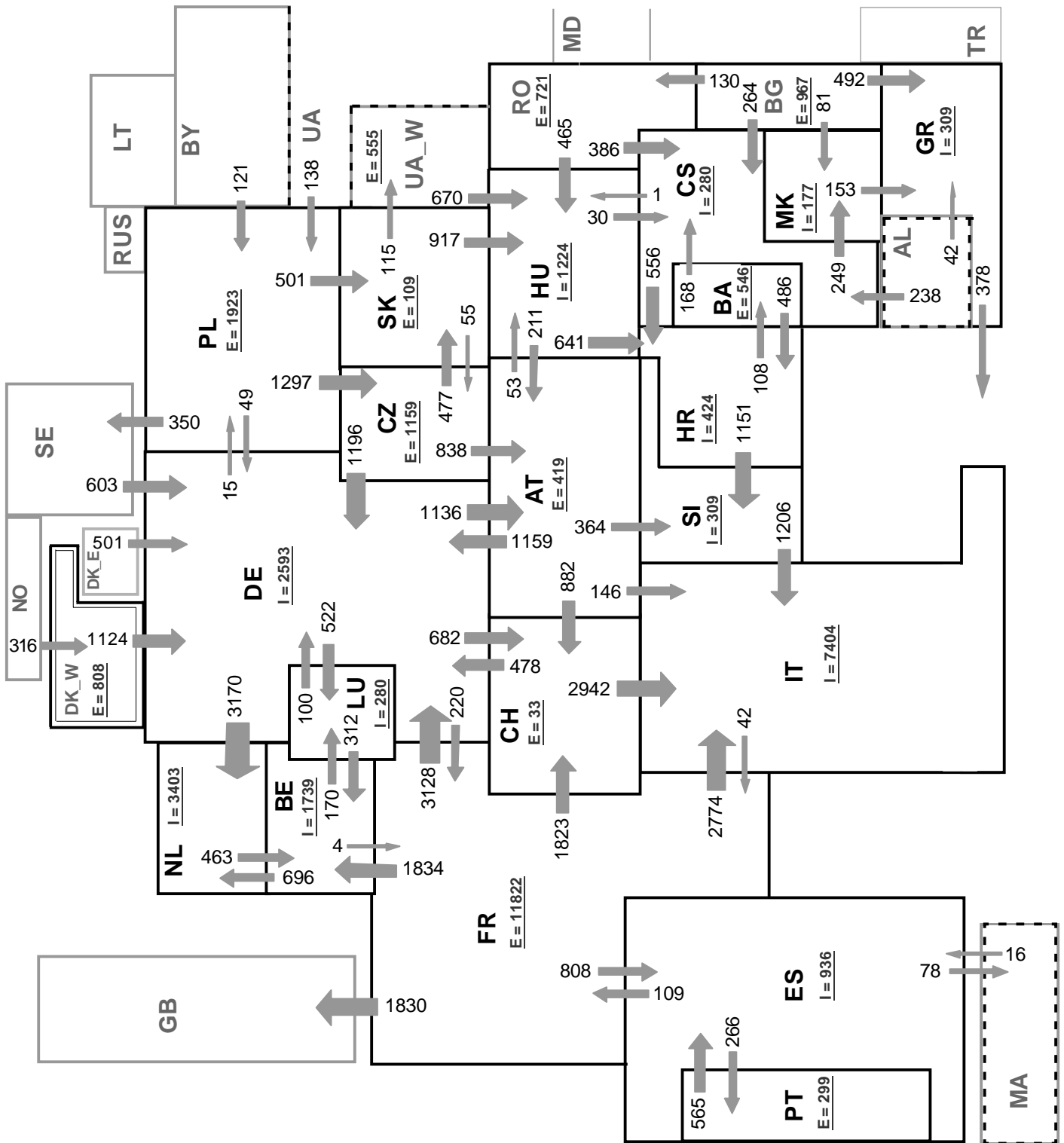
Sum of load flows in MW:

UCTE = 33833 MW

Total = 39461 MW

I = Import balance

E = Export balance

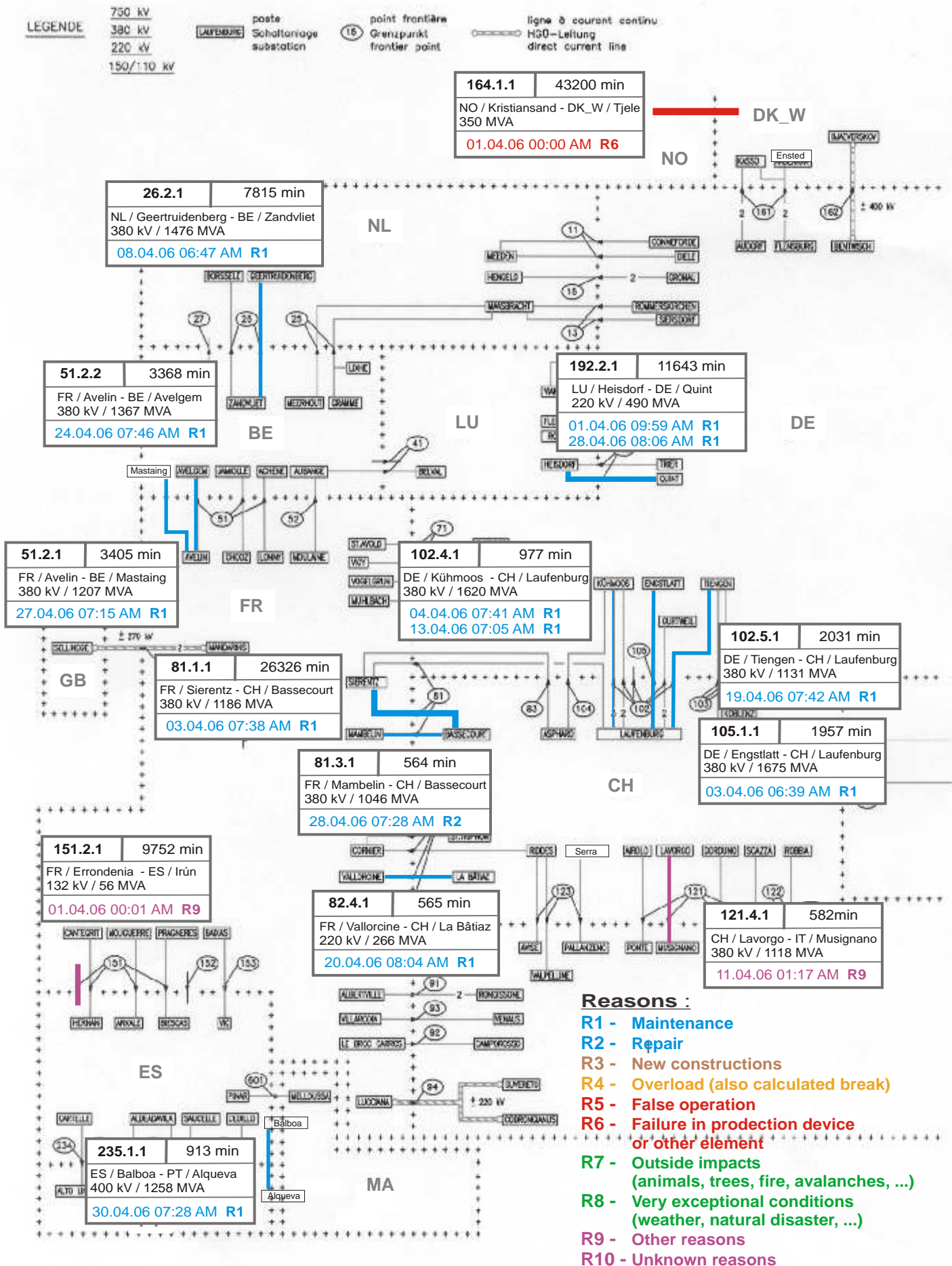


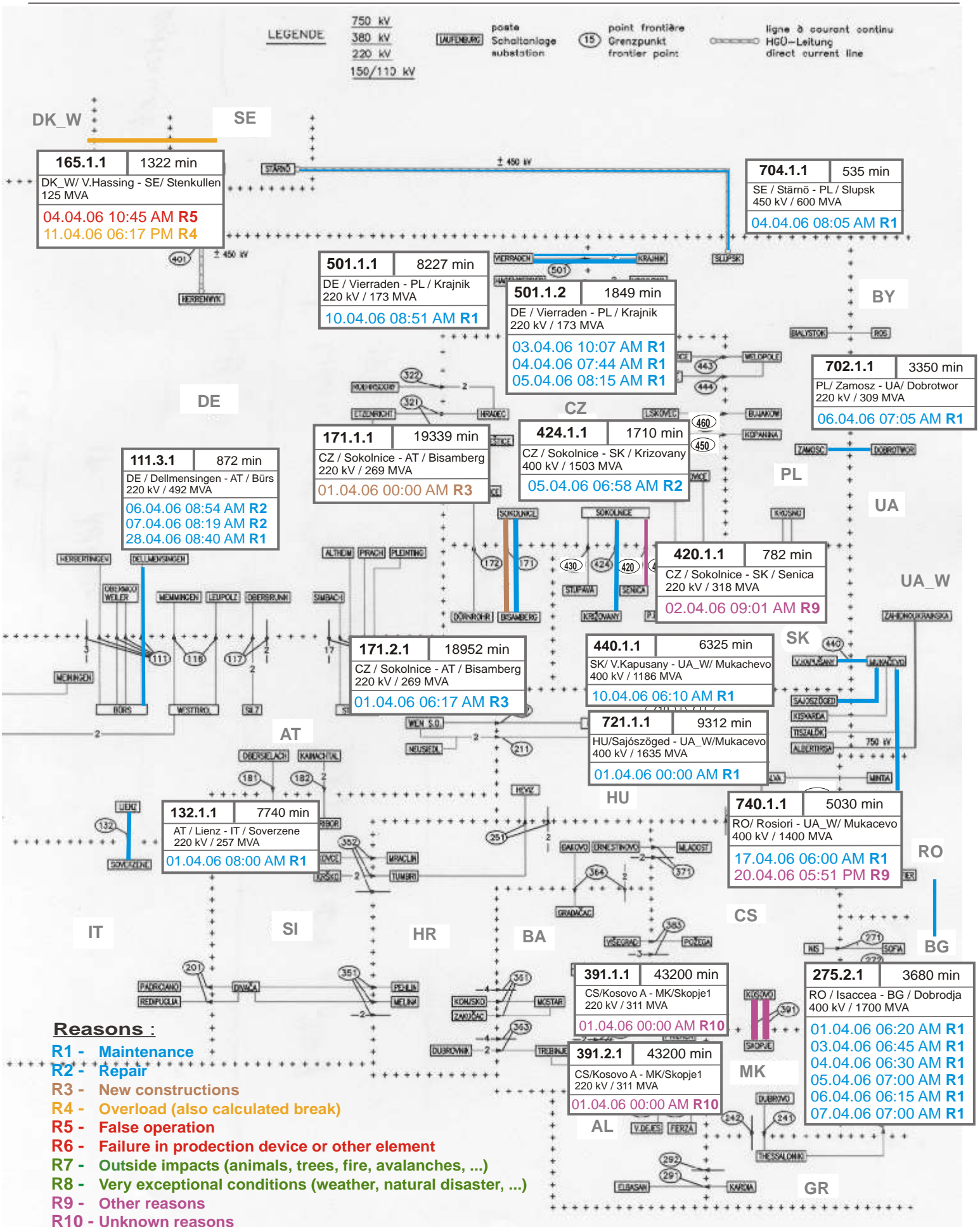
Associate member

Synchronous operation with UCTE region

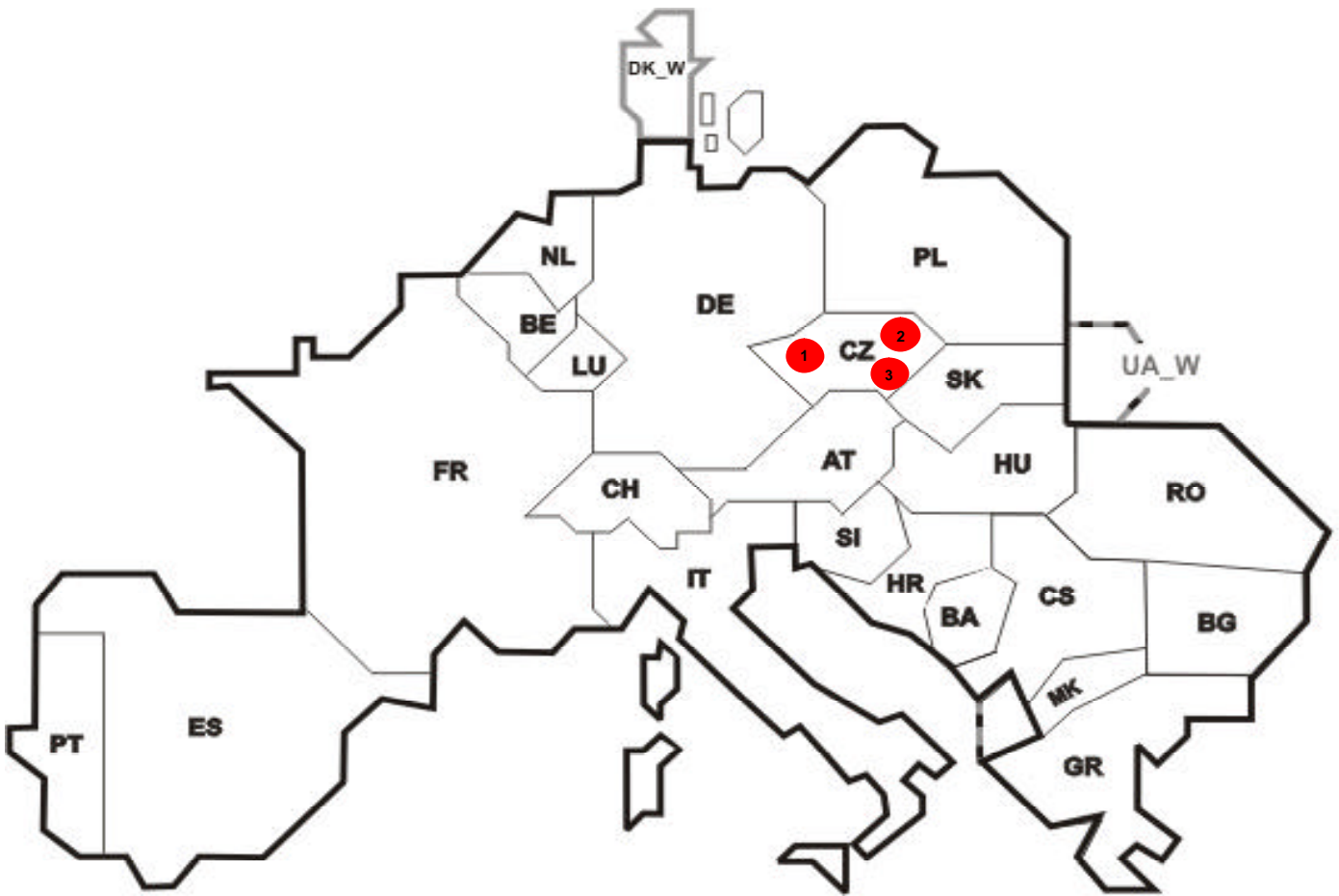
**Sum of load flows in MW:**  
**UCTE = 37349 MW**  
**Total = 43491 MW**

**I** = Import balance  
**E** = Export balance









Reasons:

**R4** Overload (also calculated break)

**R5** False operation

**R6** Failure in protection device or other element

**R7** Outside impacts (animals, trees, fire, avalanches, ...)  
(animals, trees, fire, avalanches, ...)

**R8** Very exceptional conditions  
(weather, natural disaster, ...)

**R9** Other reasons

**R10** Unknown reasons

| No | Country | Substation | Reason | Energy not supplied [ MWh ] | Total loss of power [ MW ] | Restoration time [ min ] | Equivalent time of interruption <sup>1</sup> |
|----|---------|------------|--------|-----------------------------|----------------------------|--------------------------|----------------------------------------------|
| 1  | CZ      | Bezdecin   | R5     | 19                          | 0                          | 8                        | 0,16                                         |
| 2  | CZ      | Miin       | R5     | 17                          | 0                          | 69                       | 0,14                                         |
| 3  | CZ      | Cebin      | R6     | 6                           | 0                          | 3                        | 0,05                                         |

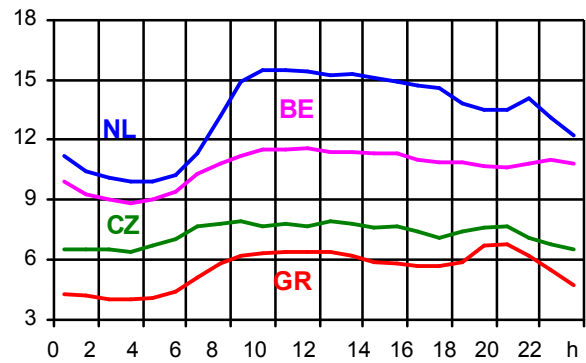
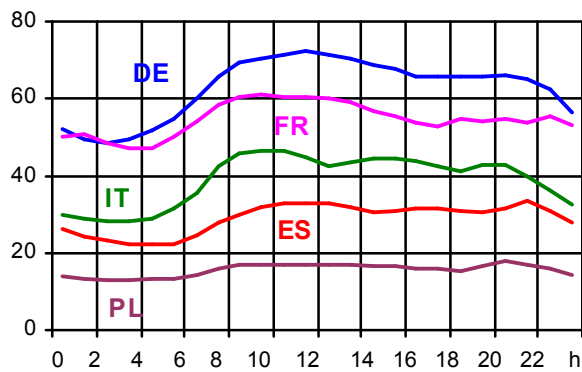
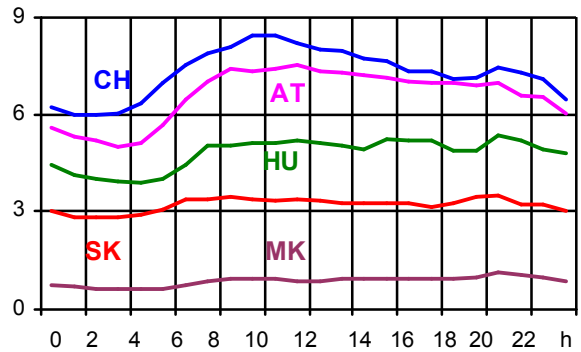
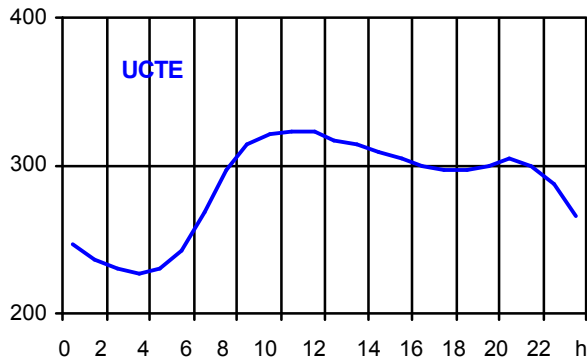
<sup>1</sup> ( year [in min] \* energy not supply ) / consumption last 12 months

| Control area | Export Programs | Import Programs | Export Programs at 03:00 | Import Programs at 03:00 | Export Programs at 11:00 | Import Programs at 11:00 |
|--------------|-----------------|-----------------|--------------------------|--------------------------|--------------------------|--------------------------|
| AT           | n.a.            | n.a.            | n.a.                     | n.a.                     | n.a.                     | n.a.                     |
| BA           | 405786          | 58172           | 517                      | 110                      | 597                      | 0                        |
| BE           | 661043          | 1689136         | 1160                     | 1745                     | 1215                     | 2809                     |
| BG           | n.a.            | n.a.            | n.a.                     | n.a.                     | n.a.                     | n.a.                     |
| CH           | 2397900         | 2753468         | 2974                     | 4138                     | 3891                     | 3867                     |
| CS           | 540427          | 651176          | 661                      | 566                      | 1073                     | 1265                     |
| CZ           | 1397687         | 559957          | 1961                     | 711                      | 2216                     | 833                      |
| DE           | 2822927         | 2395071         | 2190                     | 3636                     | 3301                     | 4271                     |
| ES           | n.a.            | n.a.            | n.a.                     | n.a.                     | n.a.                     | n.a.                     |
| FR           | 8550097         | 1465358         | 12082                    | 736                      | 12965                    | 1267                     |
| GR           | 175487          | 483174          | 94                       | 707                      | 410                      | 707                      |
| HR           | 483295          | 783511          | 750                      | 1064                     | 750                      | 1194                     |
| HU           | 430819          | 1029703         | 590                      | 1088                     | 544                      | 1779                     |
| IT           | 38765           | 4747074         | 46                       | 6184                     | 42                       | 7458                     |
| MK           | 10700           | 118800          | 169                      | 276                      | 151                      | 337                      |
| NL           | 244762          | 2427401         | 285                      | 2691                     | 18                       | 3421                     |
| PL           | 1229369         | 55922           | 1640                     | 125                      | 1758                     | 140                      |
| PT           | 149766          | 432238          | 0                        | 1224                     | 863                      | 568                      |
| RO           | 466447          | 466447          | 372                      | 198                      | 988                      | 251                      |
| SI           | 445738          | 652206          | 581                      | 1142                     | 553                      | 858                      |
| SK           | 558697          | 335041          | 824                      | 469                      | 696                      | 507                      |
| DK_W         | 593197          | 265172          | 590                      | 616                      | 1050                     | 291                      |
| UA_W         | 335877          | 0               | 419                      | 0                        | 470                      | 0                        |

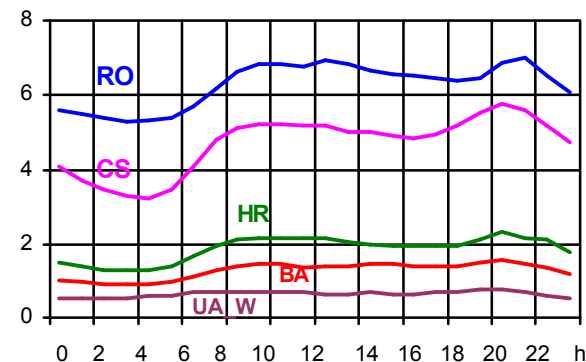
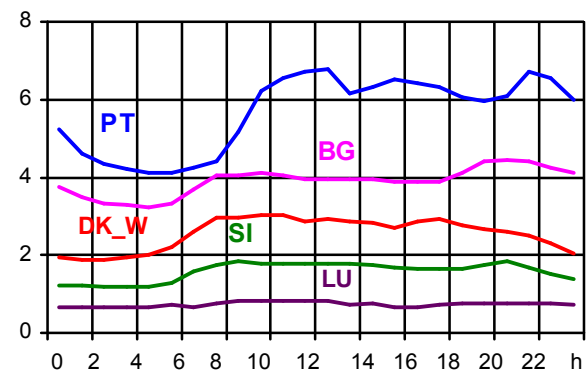
- Control areas can differ from national borders ( i.e. German block which includes parts of AT, LU and DK ).
- Values are calculated on an hourly base ( MWh ).
- This values are not the provisional values entered in the VULCANUS system, but the definitive values after an eventual correction during the actual date.
- Export Programs: Sum of all positive values of every hour of every border
- Import Programs: Sum of all negative values of every hour of every border
- Export Programs at 03:00: Sum of all positive values the third Wednesday from 02:00 to 03:00 a.m.
- Import Programs at 03:00: Sum of all negative values the third Wednesday from 02:00 to 03:00 a.m.
- Export Programs at 11:00: Sum of all positive values the third Wednesday from 10:00 to 11:00 a.m.
- Import Programs at 11:00: Sum of all negative values the third Wednesday from 10:00 to 11:00 a.m.

Consumption hourly load curves on 19.04.2006

Values in GWh



|                 | Peak load     |                    | Load representativity % | Parallel power <sup>2</sup> MW |
|-----------------|---------------|--------------------|-------------------------|--------------------------------|
|                 | MW            | var.% <sup>1</sup> |                         |                                |
| AT              | 7546          | -20,4              | 100                     | 8935                           |
| BA              | 1542          | 3,1                | 100                     | 2027                           |
| BE <sup>3</sup> | 11590         | 1,1                | 100                     | 9863                           |
| BG              | 4479          | 5,7                | 100                     | 4896                           |
| CH              | 8451          | -4,8               | 100                     | 8458                           |
| CS              | 5744          | 3,7                | 100                     | 4909                           |
| CZ              | 7927          | -0,9               | 100                     | 9587                           |
| DE              | 72188         | -4,2               | 91                      | 71000                          |
| ES              | 33376         | -0,4               | 98                      | 31180                          |
| FR              | 60991         | -4,9               | 100                     | 72342                          |
| GR              | 6825          | 0,3                | 100                     | 6054                           |
| HR              | 2287          | 4,1                | 100                     | 1831                           |
| HU              | 5339          | -2,9               | 100                     | 3924                           |
| IT              | 46652         | -1,1               | 100                     | 38613                          |
| LU              | 845           | -4,8               | 100                     | 823                            |
| MK              | 1104          | 7,4                | 100                     | 723                            |
| NL              | 15507         | 1,8                | 100                     | 12102                          |
| PL <sup>4</sup> | 17911         | 0,7                | 100                     | 21320                          |
| PT              | 6750          | -0,7               | 96                      | 6585                           |
| RO              | 6980          | 4,4                | 100                     | 7539                           |
| SI              | 1831          | -2,1               | 95                      | 1382                           |
| SK              | 3495          | 1,3                | 100                     | 3457                           |
| <b>UCTE</b>     | <b>323115</b> | <b>0,3</b>         |                         | <b>327550</b>                  |
| DK_W            | 3038          | -1,3               | 100                     | 3868                           |
| UA_W            | 774           | -1,4               | 100                     | 1254                           |



<sup>1</sup> Variation as compared to corresponding month of the previous year  
<sup>2</sup> Power produced in parallel operation (including autoproduction)  
<sup>3</sup> The reported figures are best estimates based on actual measurements and extrapolations.  
<sup>4</sup> Average value of each hour



## Contact

Boulevard Saint-Michel, 15  
B-1040 Brussels – Belgium  
Tel +32 2 741 69 40 – Fax +32 2 741 69 49

[info@ucte.org](mailto:info@ucte.org)  
[www.ucte.org](http://www.ucte.org)