

UCTE



February 2004

Monthly provisional values
union for the co-ordination of transmission of electricity

Table of contents ¹		Page
1	Electricity supply situation of the countries	2
2	Physical energy flows	3
3	Monthly consumption	4
4	Monthly consumption variation	6
5	Consumption of the last 12 months	7
6	Variation of the last 12 months' consumption	8
7	Load flows (night)	9
8	Load flows (day)	10
9	Unavailability of international tie lines (major events)	11
10	Network reliability (major events)	13
11	Scheduled exchanges	14
12	Load on the 3 rd Wednesday	15

¹ Monthly provisional values from the UCTE database as of 1 June 2004

1

Electricity supply situation of the countries

February 2004

Countries	Net production in GWh ¹				Exchange balance in GWh	Pump in GWh	Consumption in GWh ¹			
	Hy	Tn	Tc	Total			monthly	Δ ³ [%]	last 12 months	Δ ³ [%]
B	146	3552	2885	6583 ²	938	131	7390	2,3	84404	0,3
D	1902	13799	33790	49491 ²	-2722	702	42970	-4,4	504781	0,2
E	3573	5126	11113	19812 ²	-297	276	19239	2,9	224514	4,8
F	6212	36203	6238	48653	-4366	580	43707	0,4	454852	2,7
GR ⁴	479	0	3524	4003 ²	102	57	4048	-6,4	50174	2,7
I	3052	0	20352	23404	4034	884	26554	2,4	320407	2,9
SLO	167	467	438	1072	-38	0	1034	0,9	12399	4,2
HR	517	0	577	1094 ²	363	9	1448	2,2	15550	4,8
BiH	536	0	643	1179	268	0	1447	39,4	13104	n.a.
FYROM	125	0	473	598 ²	3	0	601	-2,6	6262	n.a.
SCG	1199	0	2470	3669	294	19	3944	-2,1	39219	n.a.
L	73	0	274	347	265	79	533	6,2	6141	1,7
NL	0	315	7410	7725 ²	1360	0	9085	1,0	109904	1,0
A	2260	0	2321	4581	581	193	4969	7,0	51672	1,0
P	1487	0	1854	3341 ²	415	14	3742	4,5	43300	3,9
CH	2101	2252	261	4614 ²	904	90	5428	0,9	60590	2,9
CZ	246	1972	4543	6761 ²	-1118	67	5576	-0,7	59939	1,3
H	14	925	1666	2605 ²	648	0	3253	0,4	38427	2,6
PL ⁵	336	0	12262	12598 ²	-1078	186	11334	-6,6	136604	0,9
SK	371	1384	772	2527 ²	-120	13	2394	1,1	26399	0,4
RO	1082	456	3045	4583 ²	-183	0	4382	2,9	49681	n.a.
BG	310	1710	1972	3992 ²	-517	18	3457	-8,3	36115	n.a.
UCTE	26188	68161	115768	210117²	-264	3318	206535	-0,4	2344438	-1,0
West UA ⁶	10	0	708	718 ²	-277	0	441	2,6	4147	n.a.

¹ Percentage as referred to total values in %

Countries	B	D	E	F	GR ⁴	I	SLO	HR	BiH	FY ROM	SCG	L	NL	A	P	CH	CZ	H	PL	SK	RO	BG	West UA ⁶	
Production	99	94	94	100	99	100	95	100	99	100	96	98	100	84	92	100	100	100	100	100	100	100	100	100
Consumption	99	94	94	100	99	100	95	100	99	100	96	99	100	90	92	100	100	100	100	100	100	100	100	100

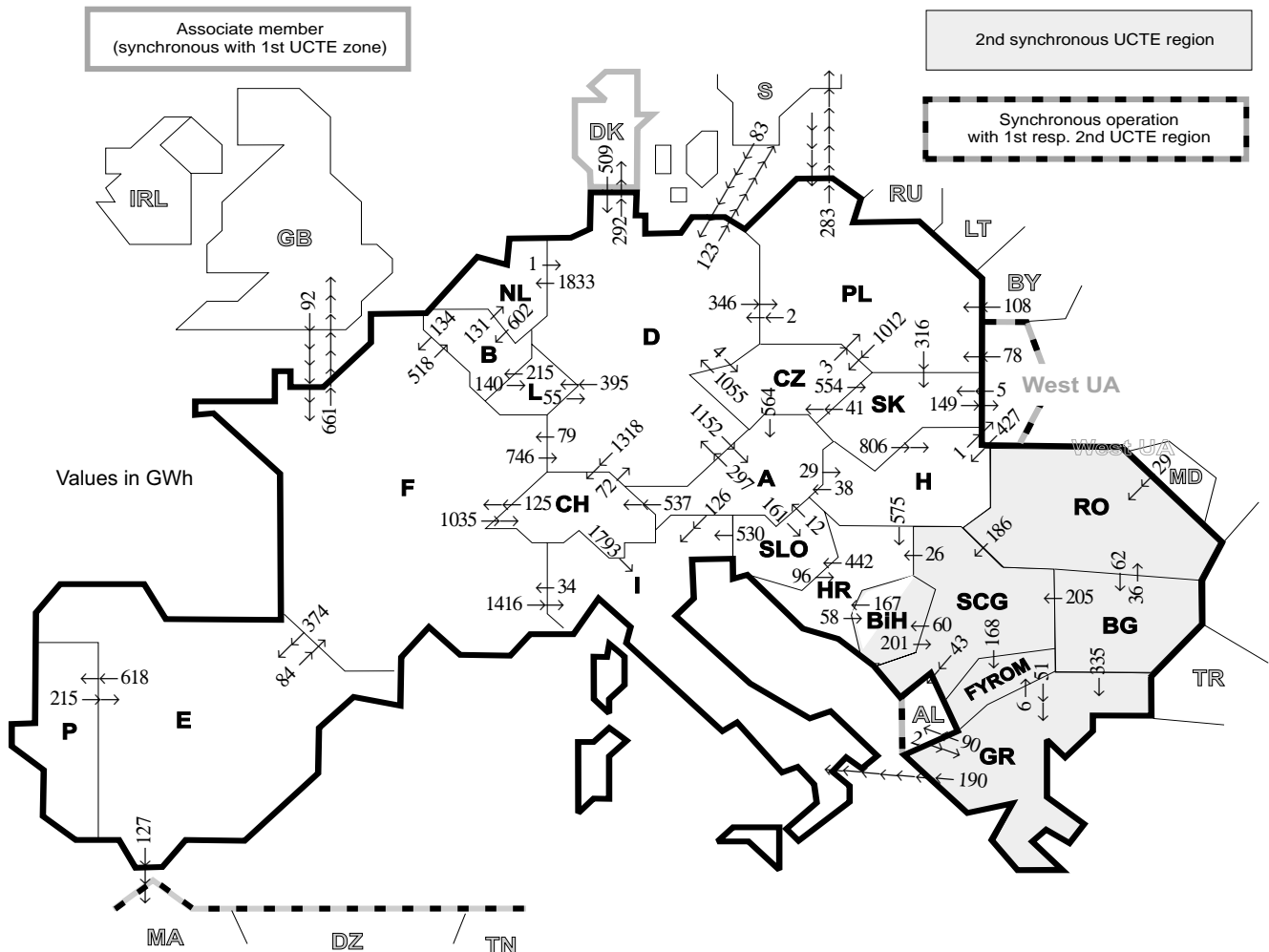
² Including deliveries from industry

³ Variation as compared to corresponding period of the previous year and representativity 100%

⁴ The representativity of data referring to the interconnected system is 99%
The representativity of data referring to the whole country including the isolated systems of Greek island is 91%

⁵ Values for 2003 are gross values, values for 2004 are net values.

⁶ West UA represents the so-called Burshtyn Island synchronously interconnected with UCTE



Exporting countries	Importing countries																			Σ Export							
	B	D	E	F	GR	I	SLO	HR	BIH	FY- ROM	SCG	L	NL	A	P	CH	CZ	H	PL		SK	RO	BG	III¹	DK²	West UA³	
B	-	-	-	134	-	-	-	-	-	-	-	140	131	-	-	-	-	-	-	-	-	-	-	-	-	-	405
D	-	-	-	79	-	-	-	-	-	-	-	395	1833	1152	-	-	-	-	-	-	-	-	-	415	292	-	5542
E	-	-	-	84	-	-	-	-	-	-	-	-	-	-	618	-	-	-	-	-	-	-	-	-	-	-	829
F	518	746	374	-	1416	-	-	-	-	-	-	-	-	-	-	1035	-	-	-	-	-	-	-	-	-	-	4750
GR	-	-	-	-	190	-	-	-	-	-	6	-	-	-	-	-	-	-	-	-	-	0	90	-	-	-	286
I	-	-	-	34	0	0	-	-	-	-	-	-	-	0	0	-	-	-	-	-	-	-	-	-	-	-	34
SLO	-	-	-	-	530	96	-	-	-	-	-	-	-	12	-	-	-	-	-	-	-	-	-	-	-	-	638
HR	-	-	-	-	-	442	58	-	-	-	0	-	-	-	-	-	-	0	-	-	-	-	-	-	-	-	500
BIH	-	-	-	-	-	167	58	-	-	-	201	-	-	-	-	-	-	-	-	-	-	-	-	-	-	-	368
FYROM	-	-	-	-	51	-	-	-	-	-	0	-	-	-	-	-	-	-	-	-	-	0	-	-	-	-	51
SCG	-	-	-	-	-	26	60	168	-	-	-	-	-	-	-	-	-	0	-	-	0	0	43	-	-	-	297
L	215	55	-	-	-	-	-	-	-	-	-	-	-	-	-	-	-	-	-	-	-	-	-	-	-	-	270
NL	602	1	-	-	-	-	-	-	-	-	-	-	-	-	-	-	-	-	-	-	-	-	-	-	-	-	603
A	-	297	-	-	126	161	-	-	-	-	-	-	-	-	537	0	29	-	-	-	-	-	-	-	-	-	1150
P	-	-	215	-	-	-	-	-	-	-	-	-	-	-	-	-	-	-	-	-	-	-	-	-	-	-	215
CH	-	72	-	125	-	1793	-	-	-	-	0	-	-	-	-	-	-	-	-	-	-	-	-	-	-	-	1990
CZ	-	1055	-	-	-	-	-	-	-	-	-	-	-	564	-	-	-	-	3	554	-	-	-	1	-	-	2176
H	-	-	-	-	-	-	-	-	-	-	0	-	-	38	-	-	-	-	-	0	0	-	1	-	1	-	614
PL	-	2	-	-	-	-	-	-	-	-	-	-	-	-	-	-	1012	-	-	316	-	-	283	-	0	-	1613
SK	-	-	-	-	-	-	-	-	-	-	-	-	-	-	-	-	41	806	0	-	-	-	149	-	149	-	996
RO	-	-	-	-	-	-	-	-	-	-	186	-	-	-	-	-	-	0	-	-	-	62	0	-	0	-	248
BG	-	-	-	-	335	-	-	-	-	-	0	205	-	-	-	-	-	-	-	-	-	36	0	-	-	-	576
III¹	-	592	0	92	2	-	-	-	-	-	-	-	-	-	-	-	-	-	-	-	-	0	-	-	-	-	1333
DK²	-	509	-	-	-	-	-	-	-	-	-	-	-	-	-	-	-	-	-	-	427	186	5	29	0	-	509
West UA³	-	-	-	-	-	-	-	-	-	-	-	-	-	-	-	-	-	-	-	-	427	78	5	0	-	-	510
Σ Import	1335	2820	589	548	388	4055	603	864	118	174	592	535	1964	1766	618	2890	1057	1262	535	875	65	62	1769	292	150	25484	

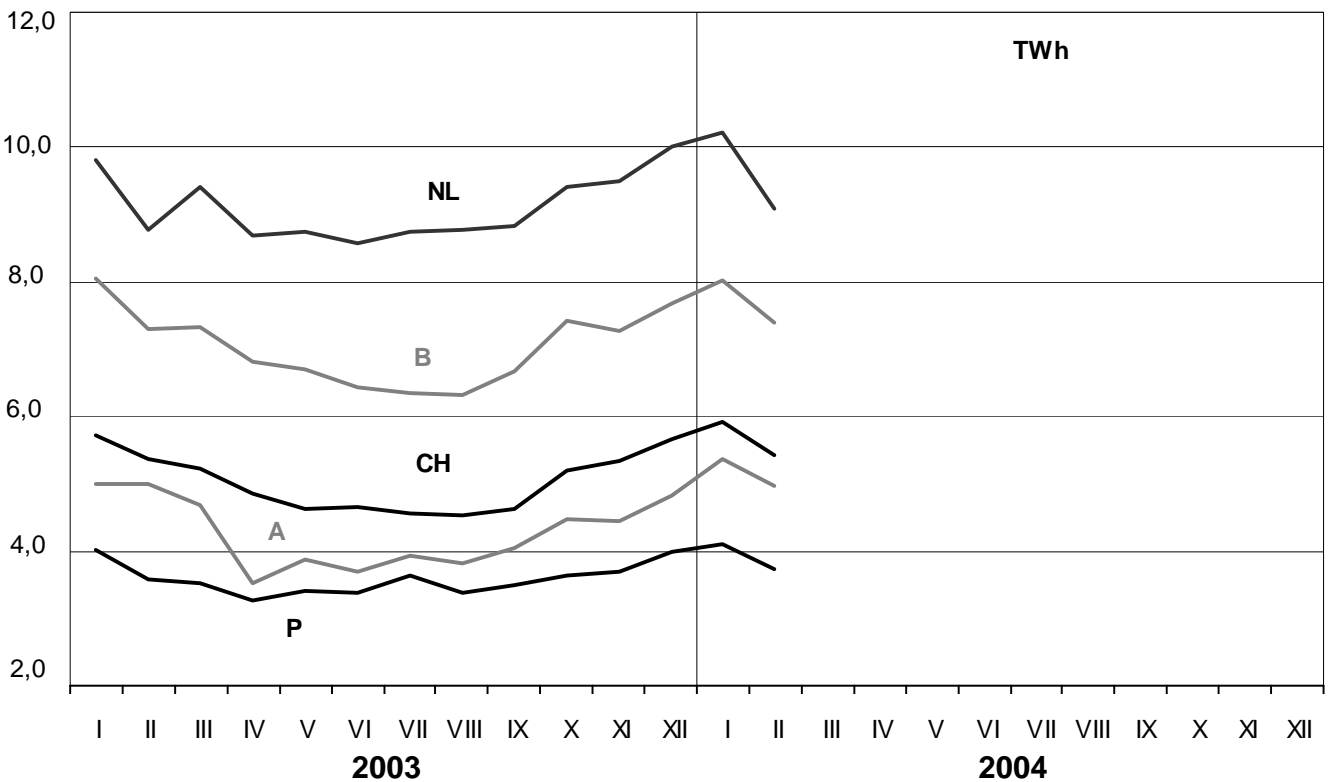
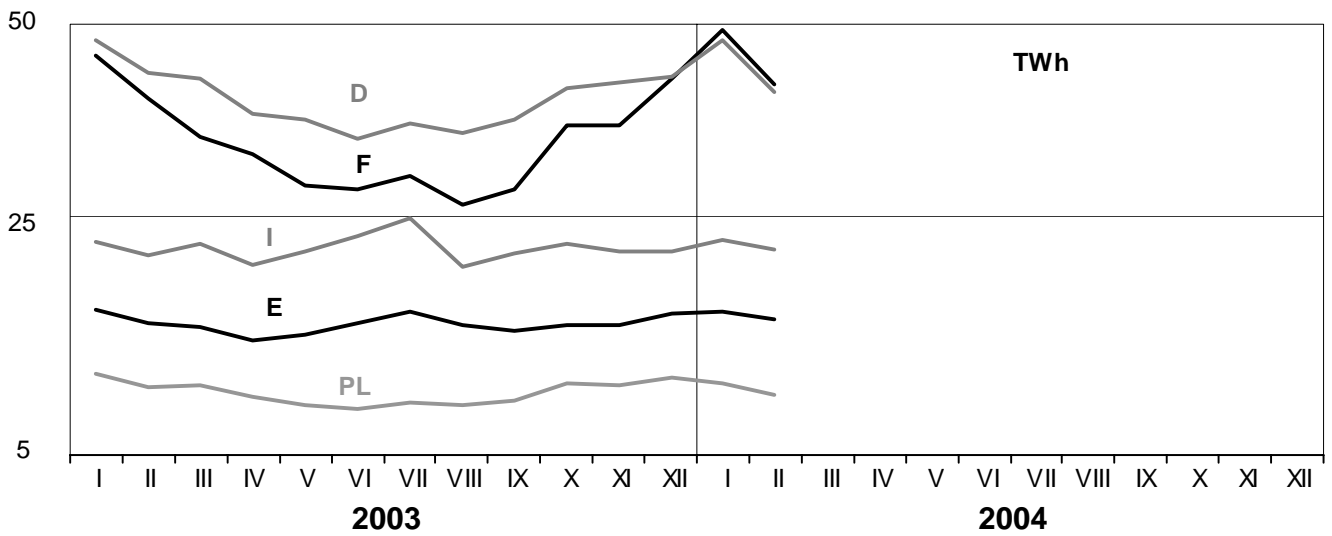
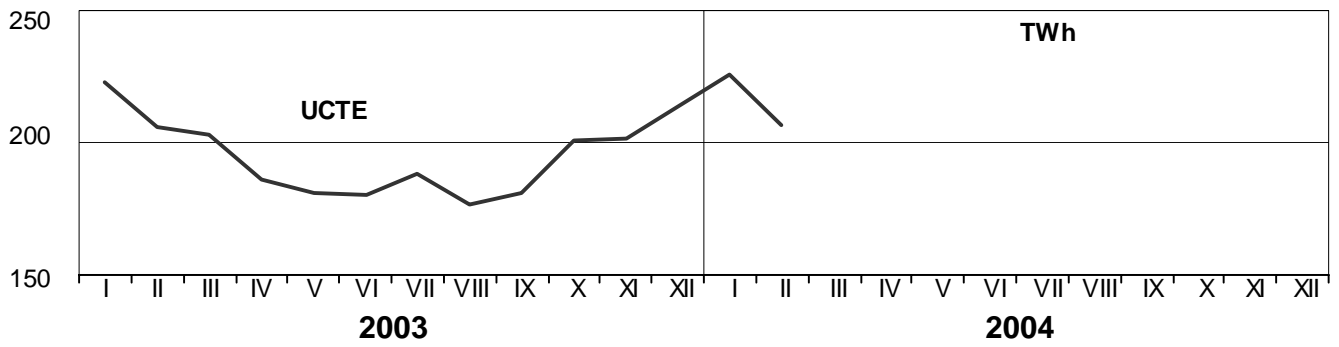
Sum of physical energy flows between UCTE countries = 22382 GWh Total physical energy flows = 25484 GWh

¹ III = Third countries: Albania, Belarus, Denmark, Great Britain, Morocco, Republic of Moldavia, Sweden, Republic of Turkey and West Ukraine

² Denmark (Jutland)

³ West UA represents the so-called Burshtyn Island synchronously interconnected with UCTE

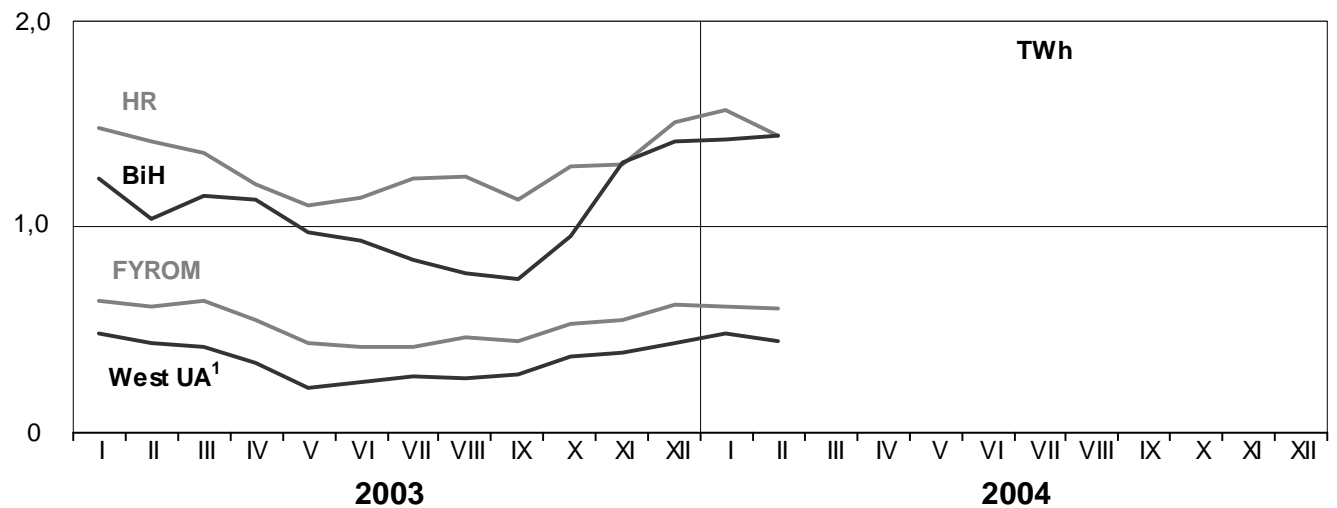
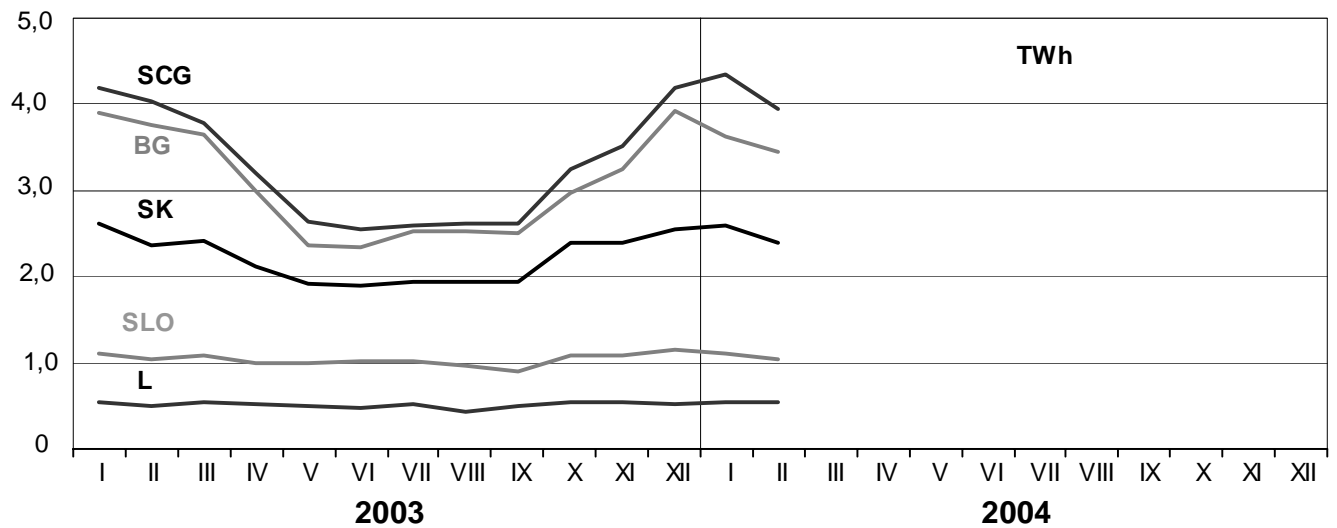
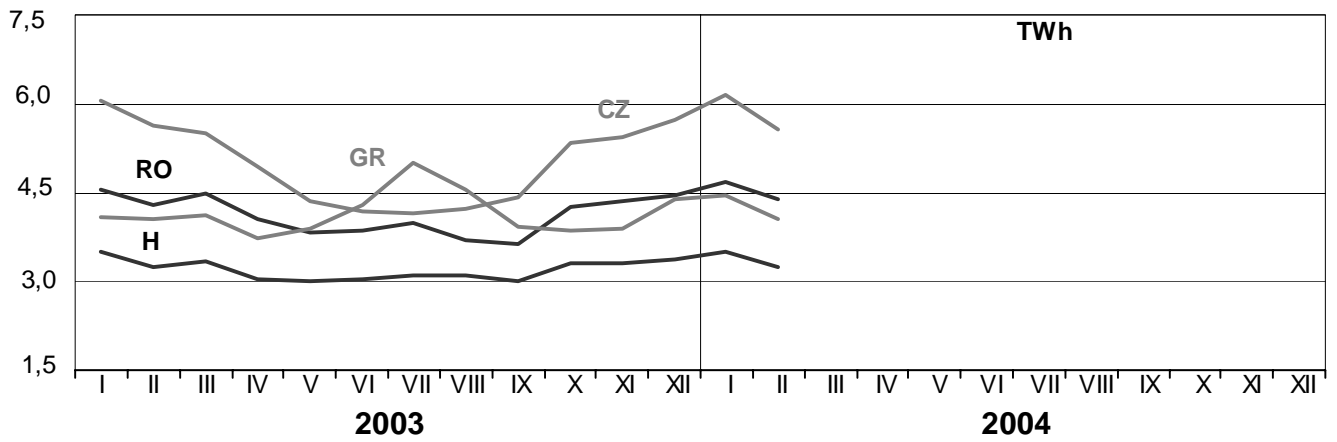
These physical energy flows were measured on the cross-frontier transmission lines (≥ 110 kV) listed in table 9 of the Statistical Yearbook. These values may differ from the official statistics and the exchange balances in chapter 1.



3

Monthly consumption

February 2004

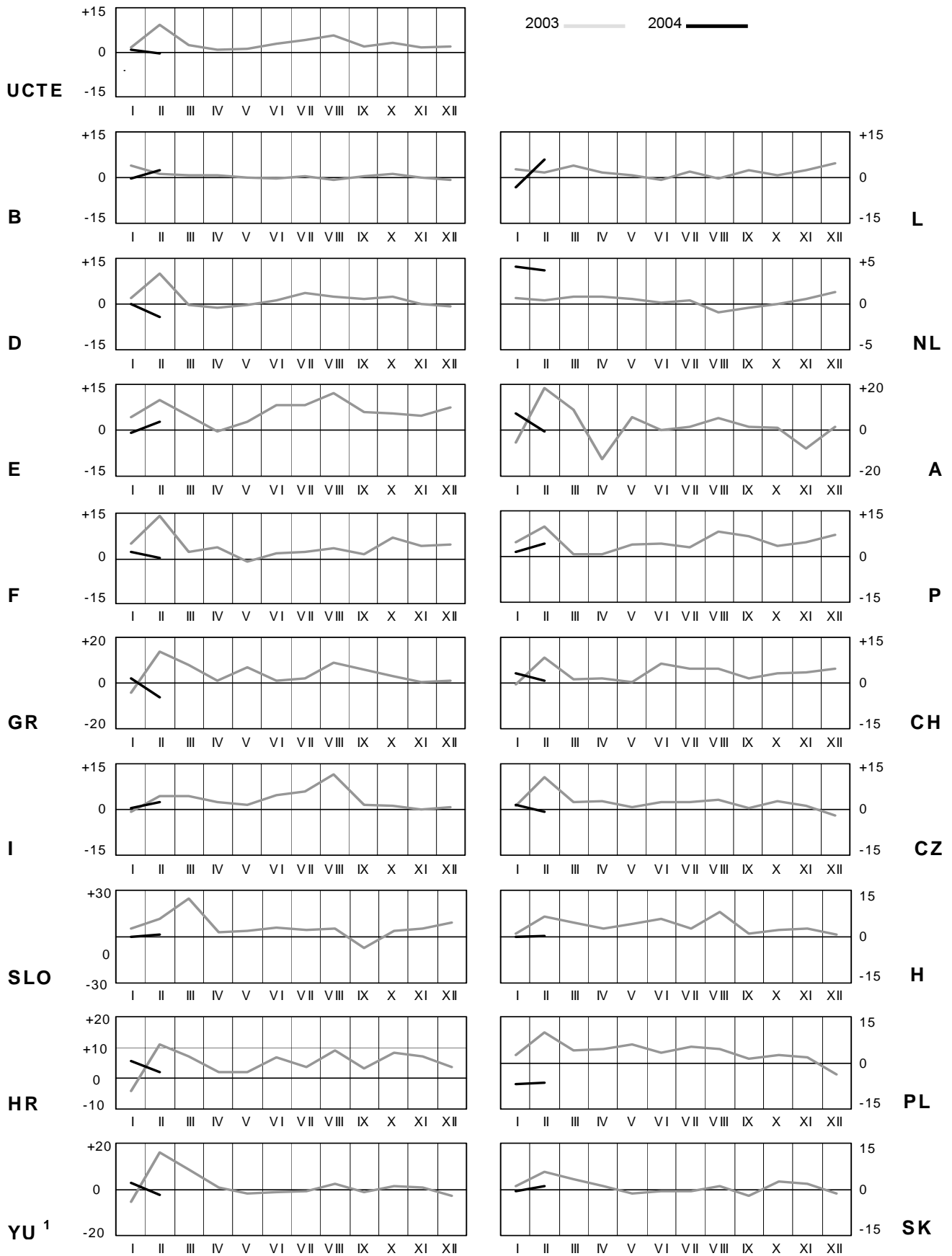


¹ West UA represents the so-called Burshtyn Island synchronously interconnected with UCTE

4

Monthly consumption variation

February 2004

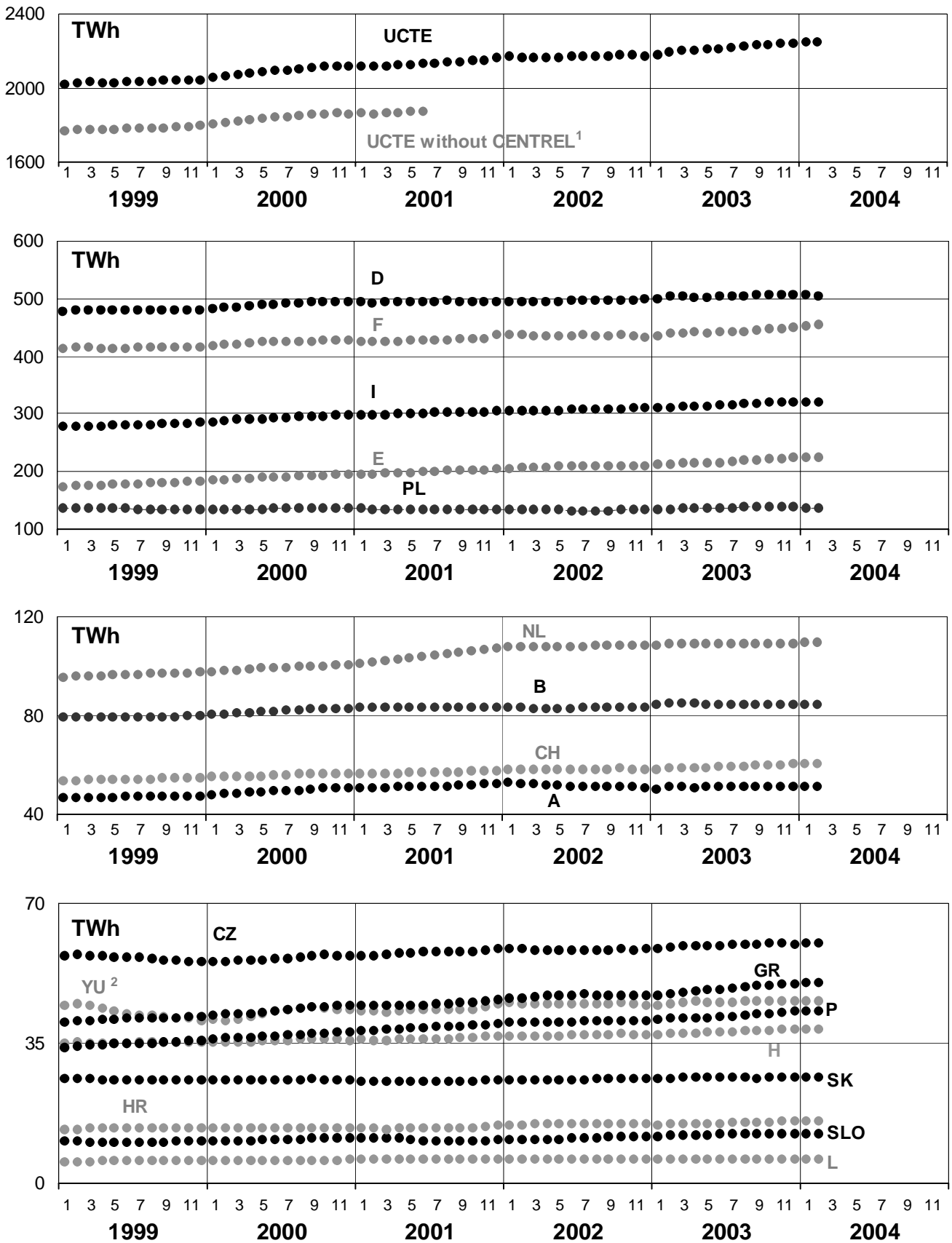


¹YU = FRY + FYROM (Federal Republic of Yugoslavia and former Yugoslav Republic of Macedonia)

5

Consumption of the last 12 months

February 2004



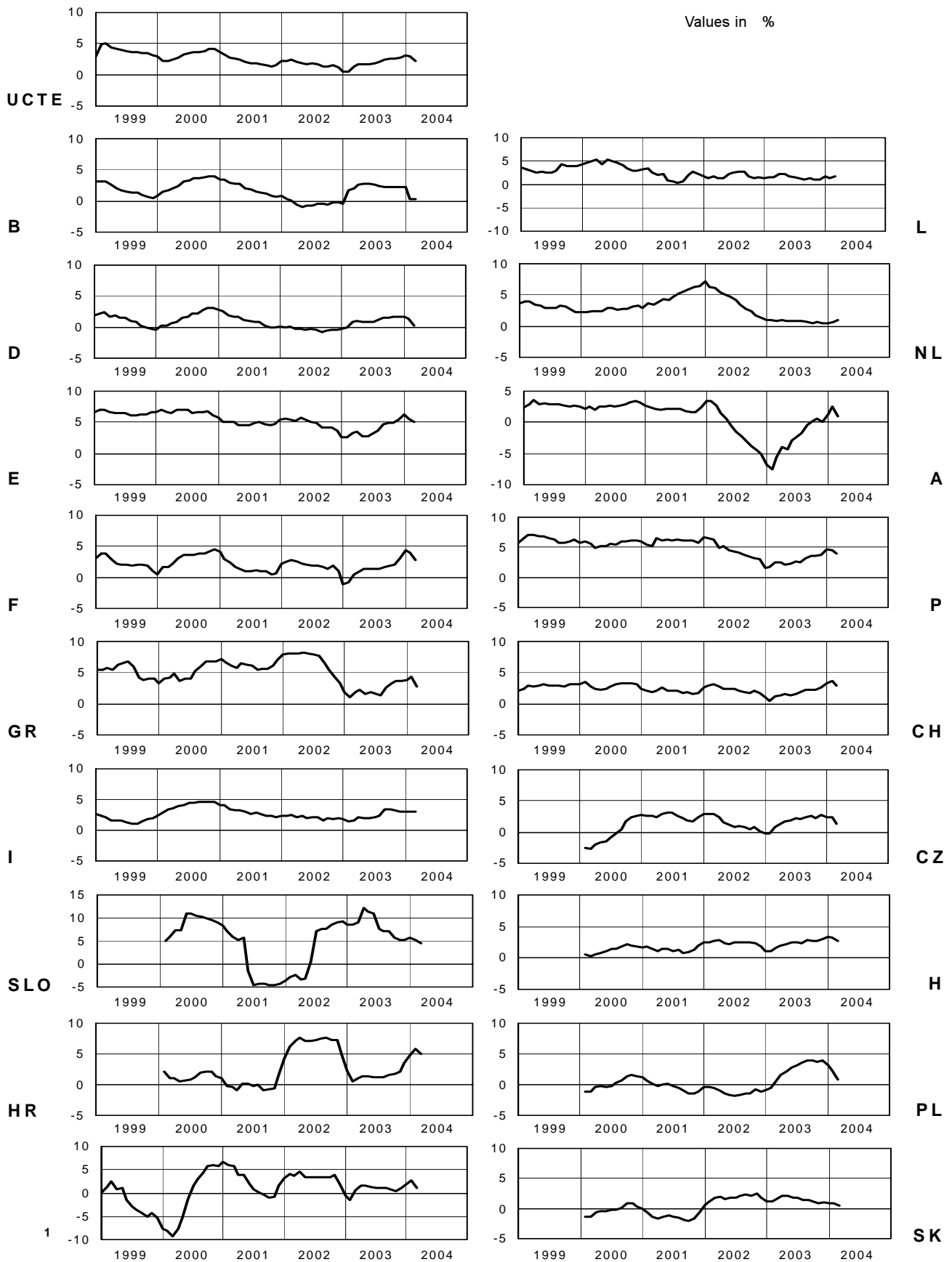
¹ CENTREL countries CZ, H, PL and SK member of UCTE from May 2001

² YU = FRY + FYROM (Federal Republic of Yugoslavia and former Yugoslav Republic of Macedonia)

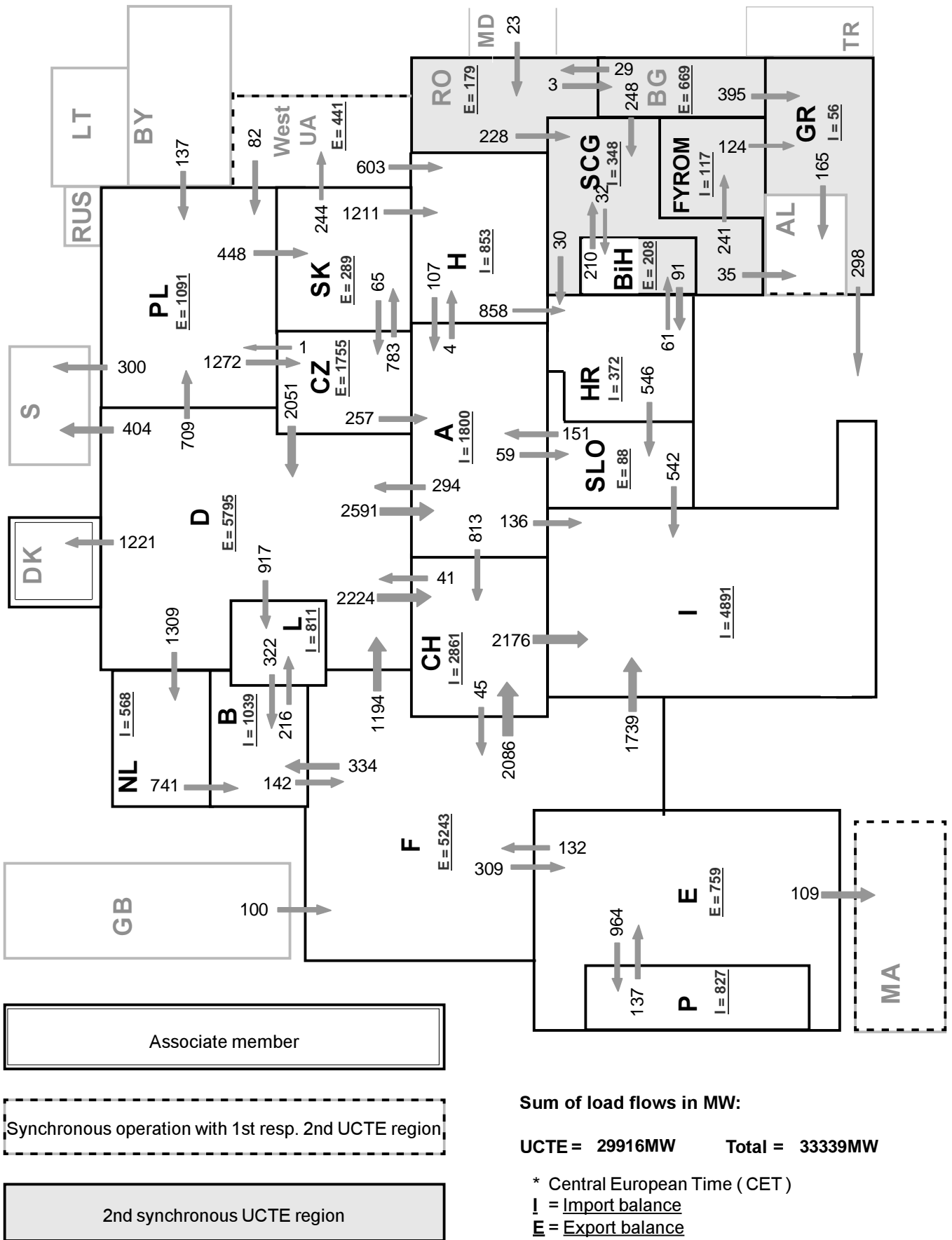
6

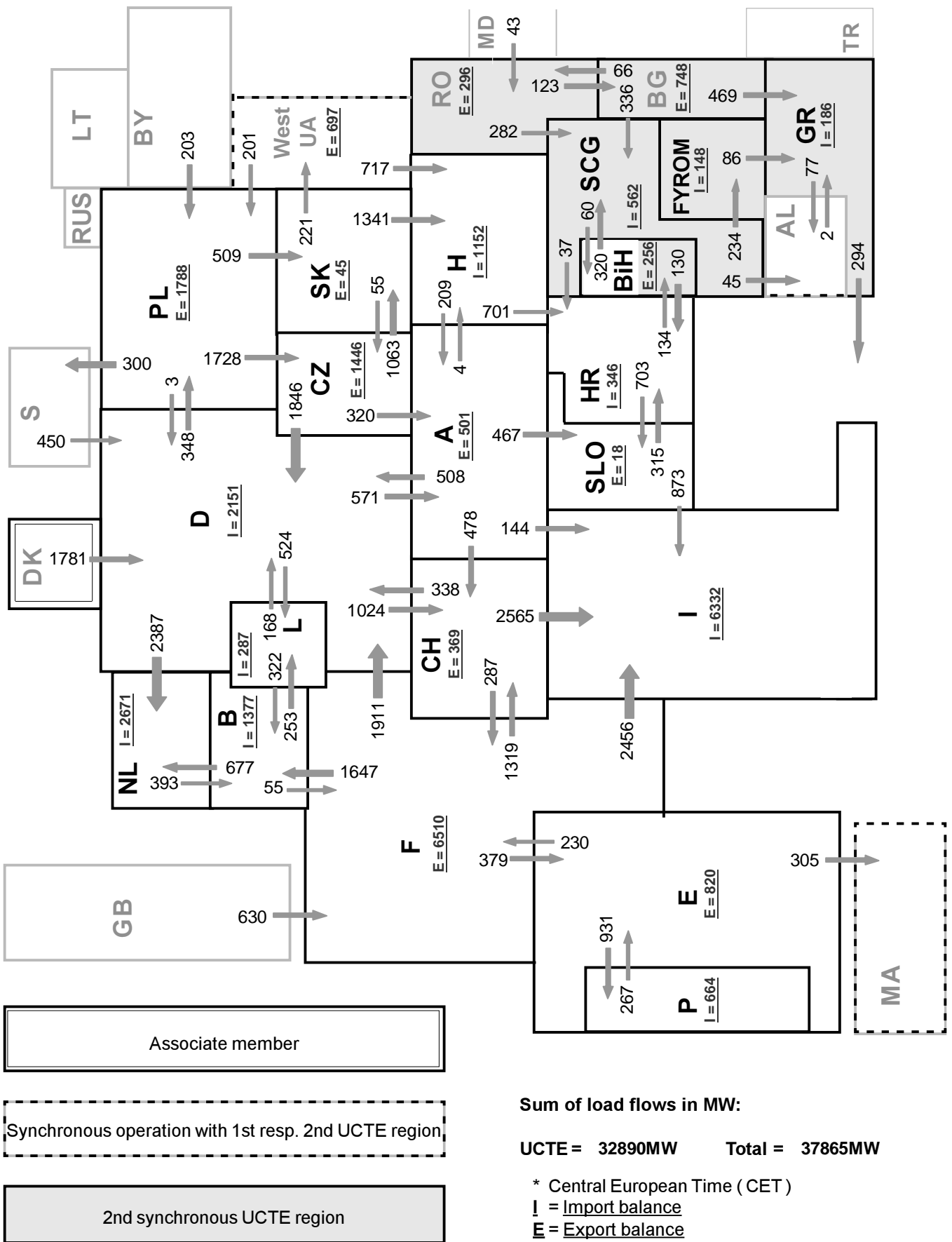
Variation of the last 12 months' consumption

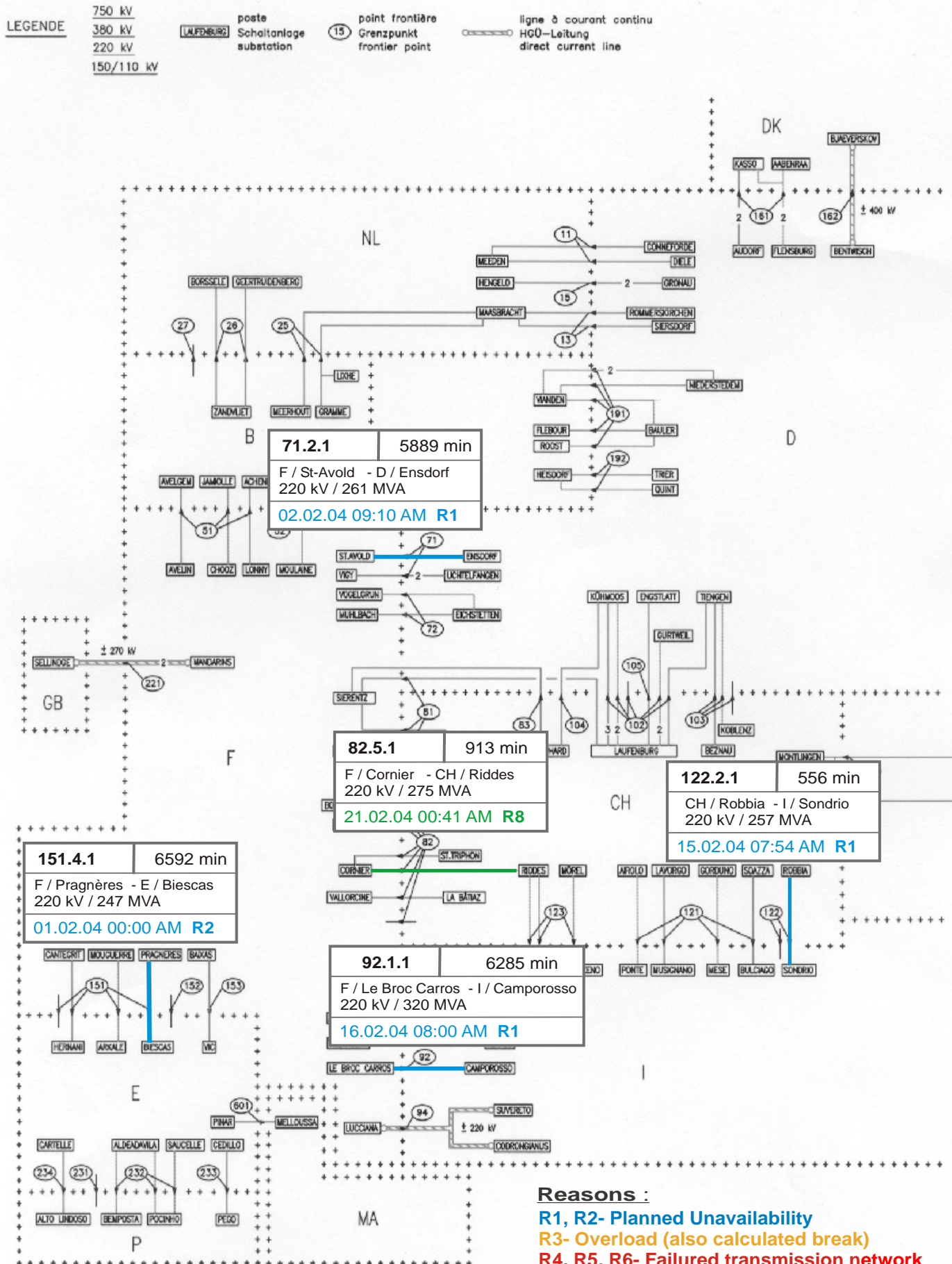
February 2004



¹ YU = FRY + FYROM (Federal Republic of Yugoslavia and former Yugoslav Republic of Macedonia)

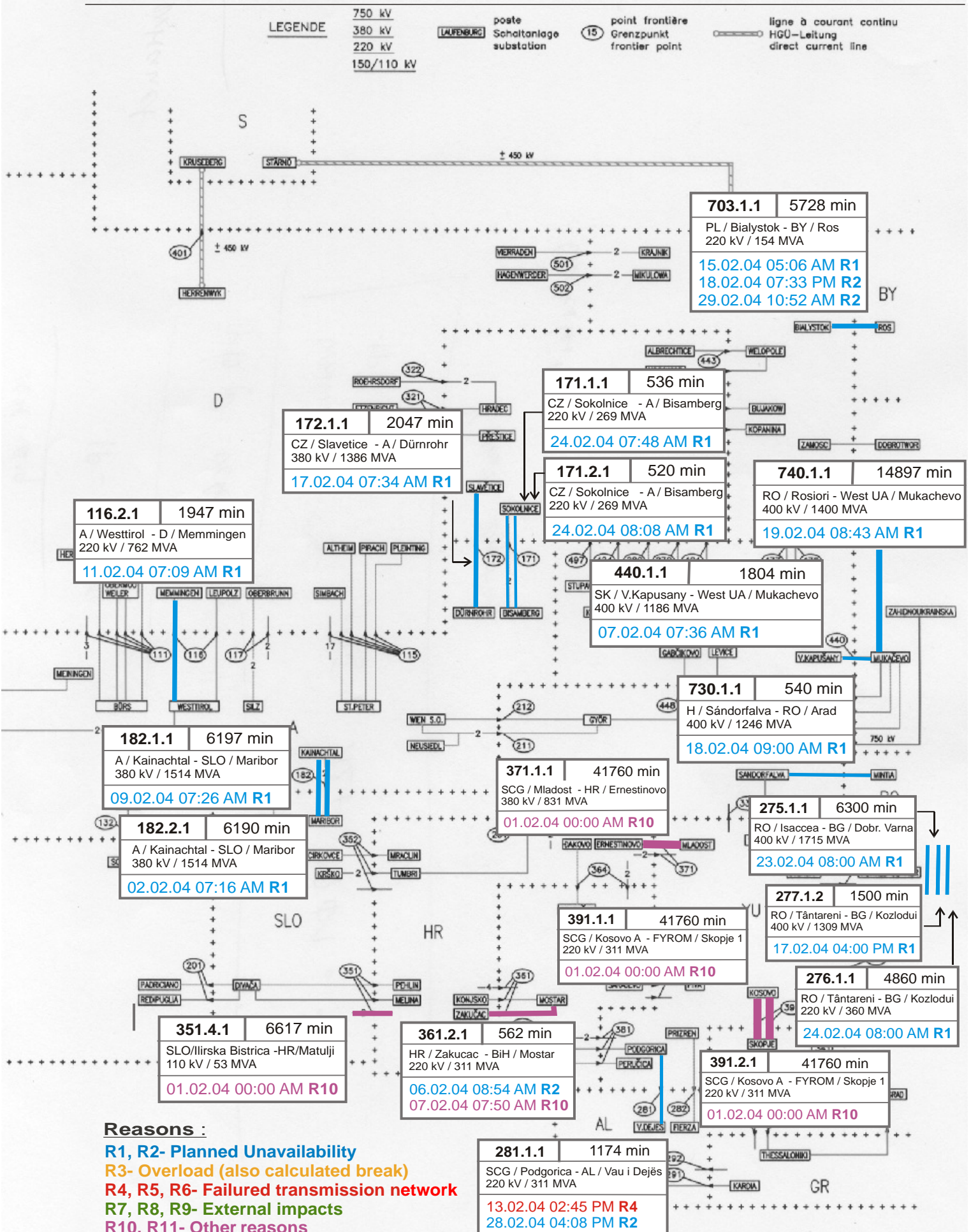






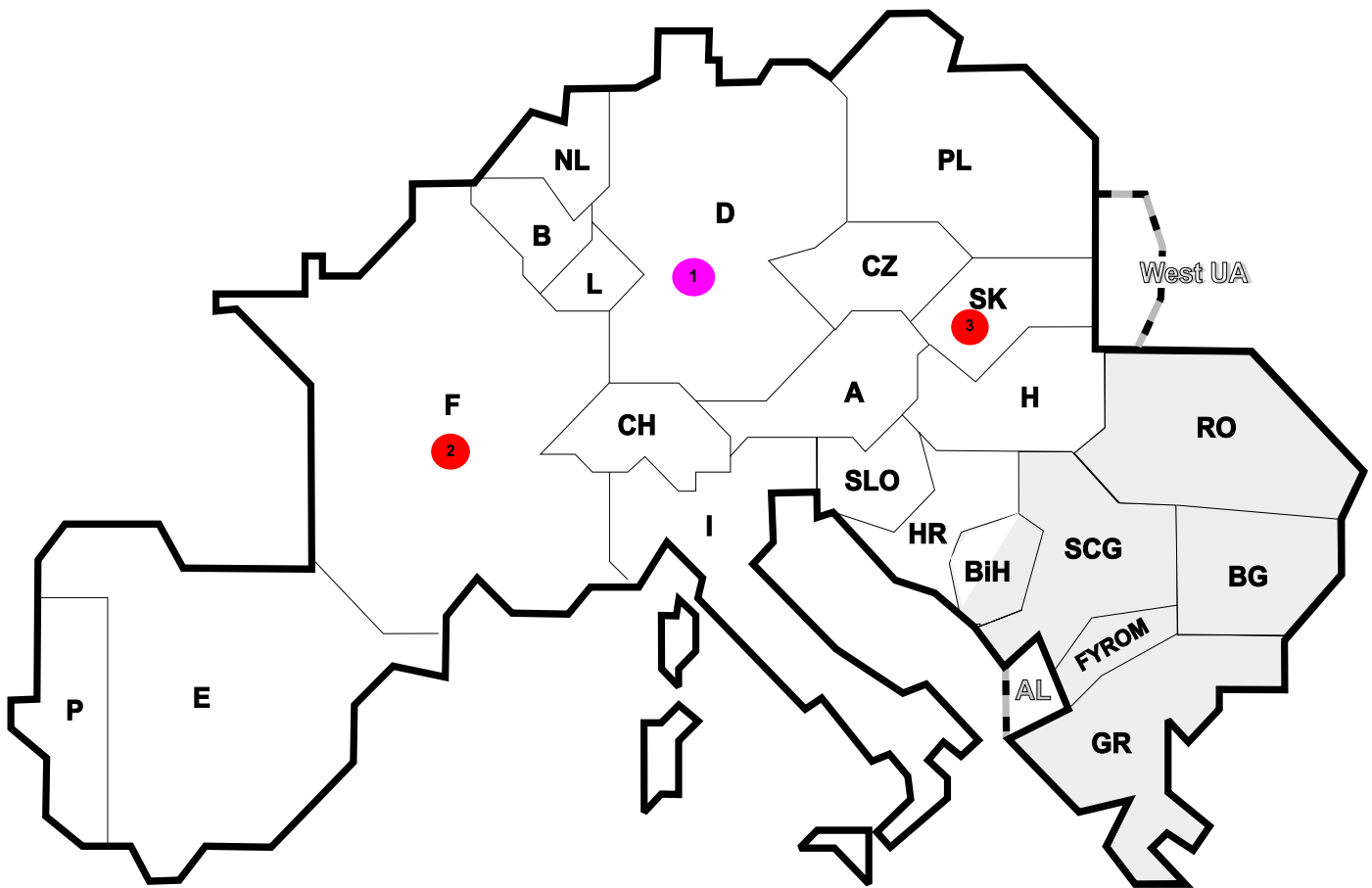
Reasons :

- R1, R2- Planned Unavailability
- R3- Overload (also calculated break)
- R4, R5, R6- Failed transmission network
- R7, R8, R9- External impacts
- R10, R11- Other reasons



Reasons :

- R1, R2- Planned Unavailability
- R3- Overload (also calculated break)
- R4, R5, R6- Failed transmission network
- R7, R8, R9- External impacts
- R10, R11- Other reasons



Reasons:

- R4 Overload (also calculated brake)
- R5 False operation
- R6 Failure in protection device or other element
- R7 Outside impacts (animals, fire, avalanches,...)
- R8 Very exceptional conditions (weather, natural disaster,...)
- R9 Other reasons
- R10 Unknown reasons

Nbr	Country	Substation	Reason	Energy not supplied [MWh]	Total loss of power [MW]	Restoration time [min]	Equivalent time of interruption ¹
1	D	Biblis	R9	910	1300	42	0,93
2	F	Loufert	R5	16	121	8	0,19
3	SK	Lemesany	R6	3	22	7	0,07

¹ (year [in min] * energy not supplied) / consumption last 12 months

Control area	Prog_exp	Prog_imp	Prog_exp3	Prog_imp3	Prog_exp11	Prog_imp11
B	324599	1177348	457	1416	0	1720
D	4273580	2027302	4998	2680	4009	4146
E	877062	561948	1527	550	1606	645
F	6783536	2582747	8183	2942	9009	2518
GR	245724	347976	400	421	360	557
I	34072	4067940	0	4891	0	6332
SLO	528573	489773	702	609	728	696
HR	225316	591757	300	447	258	268
BiH	104	160	441	70	476	70
FYROM	50800	175000	98	218	168	348
SCG	384608	642844	388	783	528	1153
NL	440390	1799365	1011	1580	433	3112
A	493326	541906	268	659	690	1122
P	61635	477336	0	852	95	770
CH	1740452	2645596	1607	4483	3240	2867
CZ	1705547	576769	2363	544	2458	1009
H	235428	883475	291	1152	303	1443
PL	1187267	108222	1223	130	2071	205
SK	583631	398022	758	413	918	783
RO	387440	67936	290	75	690	119
BG	n.a.	n.a.	n.a.	n.a.	n.a.	n.a.
West UA ¹	276695	0	364	0	495	0

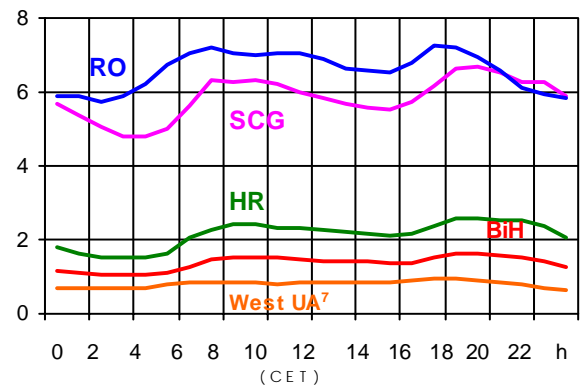
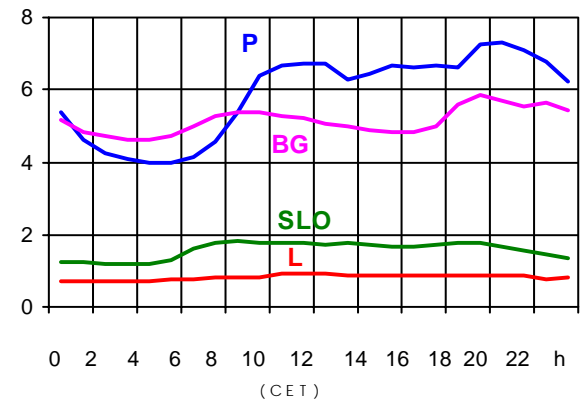
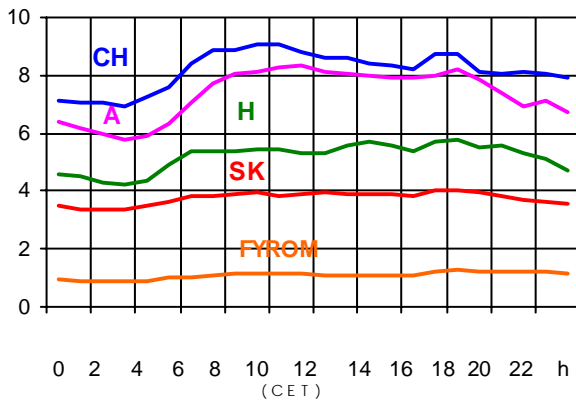
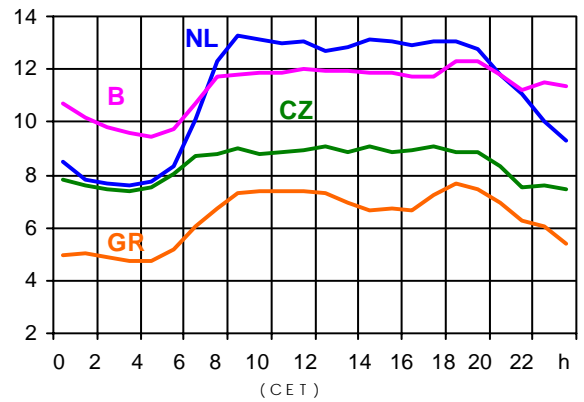
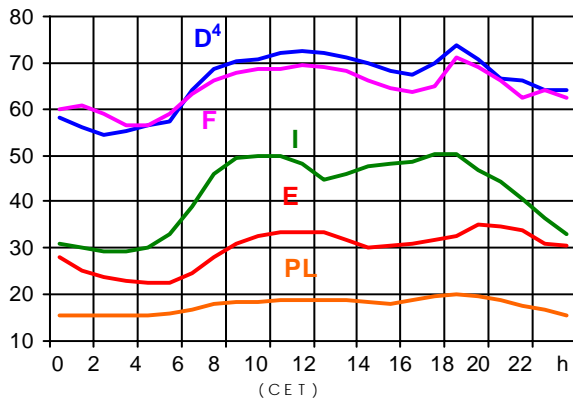
- Control areas can differ from national borders (i.e. German block which includes parts of A, L and DK).
- Values are calculated on an hourly base (MWh).
- This values are not the provisional values entered in the VULCANUS system, but the definitive values after an eventual correction during the actual date.
- Prog_exp: Sum of all positive values of every hour of every border
- Prog_imp: Sum of all negative values of every hour of every border
- Prog_exp3: Sum of all positive values the third Wednesday from 02:00 to 03:00 a.m.
- Prog_imp3: Sum of all negative values the third Wednesday from 02:00 to 03:00 a.m.
- Prog_exp11: Sum of all positive values the third Wednesday from 10:00 to 11:00 a.m.
- Prog_imp11: Sum of all negative values the third Wednesday from 10:00 to 11:00 a.m.

¹ West UA represents the so-called Burshtyn Island synchronously interconnected with UCTE

Consumption hourly load curves¹ on

18.02.04

Values in GW



	Peak load MW	Δ % ²	Cons_load_repr ¹ %	Parallel load ³ MW
B	12306	-0,9	100	10517
D	73900	1,0	91	79200
E	35157	-5,1	94	35157
F	71184	-9,9	100	75293
GR ⁶	7667	-6,1	99	7222
I	50230	-0,1	100	43192
SLO	1830	0,0	95	1792
HR	2600	-0,7	100	2562
BiH	1657	-4,1	99	1763
FYROM	1242	1,6	100	998
SCG	6676	-4,3	96	5651
L	929	15,2	99	917
NL	13250	0,0	90	10291
A	8327	-1,0	82	8922
P	7318	-0,7	92	5743
CH	9041	-4,8	100	9571
CZ	9088	-5,8	100	11002
H	5784	-1,1	100	4257
PL	19878	-6,7	100	20443
SK	4056	-2,6	100	3924
RO	7268	-1,0	100	7050
BG	5828	-11,6	100	5956
UCTE	350620	-3,9		351423
DK ⁵				2410
West UA ⁷	939	2,3	100	1310

¹ Percentage as referred to total values in %

² Variation as compared to corresponding month of the previous year

³ Including autoproduction

⁴ Values estimated on the basis of former data from the German Federal Office for Statistics

⁵ Denmark (Jutland)

⁶ The representativity of data referring to the interconnected system is 99%
The representativity of data referring to the whole country including the isolated systems of the Greek island is 91%

⁷ West UA represents the so-called Burshtyn Island synchronously with the UCTE



Contact

Boulevard Saint-Michel, 15
B-1040 Brussels - Belgium
Tel +3227416940 - Fax +3227416949

info@ucte.org
www.ucte.org