



# January 2009

Monthly provisional values

union for the co-ordination of transmission of electricity



| <b>Table of contents</b> |  | Page |
|--------------------------|--|------|
| 1                        | Electricity supply situation of the countries              | 2    |
| 2                        | Physical energy flows                                      | 3    |
| 3                        | Monthly consumption  | 4    |
| 4                        | Monthly consumption variation                              | 6    |
| 5                        | Consumption of the last 12 months                          | 8    |
| 6                        | Variation of the last 12 months' consumption               | 10   |
| 7                        | Load flows (night)   | 12   |
| 8                        | Load flows (day)   | 13   |
| 9                        | Unavailability of international tie lines ( major events ) | 14   |
| 10                       | Network reliability ( major events )                       | 16   |
| 11                       | Scheduled exchanges  | 17   |
| 12                       | Load on the 3 <sup>rd</sup> Wednesday                      | 18   |

#### **General remarks and abbreviations used in the tables**

- All values of production and consumption in chapter 1, 3&4, 5&6 and 12 are calculated to represent 100% of the national values.
- DK\_W Denmark West represents the Western part of Denmark synchronously interconnected with UCTE (Jutland and Funen).
- UA\_W Ukraine West represents the so-called Burshtyn Island synchronously interconnected with UCTE.
- CET Central European Time
- The Bulgarian load values on the 3rd Wednesday are gross values

# 1

## Electricity supply situation of the countries

January 2009

| Countries       | Net production in GWh |               |              |              |               |                  |                           | Exchange balance<br>in GWh | Pump<br>in GWh | Consumption in GWh |             |                |            |
|-----------------|-----------------------|---------------|--------------|--------------|---------------|------------------|---------------------------|----------------------------|----------------|--------------------|-------------|----------------|------------|
|                 | Therm. nuclear        | Fossil fuels  | Hydro prod   | Other renew. | Of which wind | Non identifiable | Total                     |                            |                | monthly            | var. [%]    | last 12 months | var. [%]   |
| AT              | 0                     | 2581          | 2162         | 0            | 0             | 616              | 5359                      | 1261                       | 362            | 6258               | -1,5        | 68280          | 1,1        |
| BA              | 0                     | 693           | 699          | 0            | 0             | 0                | 1392                      | -292                       | 0              | 1100               | 0,6         | 11582          | 3,0        |
| BE <sup>2</sup> | 4366                  | 3001          | 153          | 293          | 71            | 0                | 7813 <sup>1</sup>         | 411                        | 162            | 8062               | -4,0        | 89126          | -1,2       |
| BG              | 1430                  | 2421          | 227          | 0            | 0             | 0                | 4078                      | -375                       | 94             | 3609               | -7,9        | 34145          | 0,9        |
| CH              | 2426                  | 178           | 2675         | 106          | 2             | 0                | 5385 <sup>1</sup>         | 1029                       | 117            | 6297               | n.a.        | 64670          | n.a.       |
| CZ              | 2469                  | 4701          | 163          | 17           | 16            | 0                | 7350 <sup>1</sup>         | -999                       | 63             | 6288               | -1,0        | 65072          | 0,2        |
| DE              | 12605                 | 34472         | 1456         | 5510         | 3352          | 0                | 54043 <sup>1</sup>        | -2558                      | 676            | 50809              | -2,5        | 555875         | 0,1        |
| DK_W            | 0                     | 1923          | 2            | 647          | 483           | 0                | 2572 <sup>1</sup>         | -577                       | 0              | 1995               | -2,6        | 21659          | -0,6       |
| ES              | 5430                  | 13705         | 2625         | 3794         | 3358          | 34               | 25588                     | -898                       | 484            | 24206              | -4,8        | 272826         | 1,6        |
| FR              | 43090                 | 7849          | 6097         | 1007         | 633           | 0                | 58043 <sup>1</sup>        | -2678                      | 724            | 54641              | 9,6         | 499282         | 3,5        |
| GR              | 0                     | 3896          | 341          | 215          | 196           | 0                | 4452 <sup>1</sup>         | 284                        | 83             | 4653               | -5,3        | 56047          | 0,1        |
| HR              | 0                     | 488           | 807          | 5            | 4             | 0                | 1300 <sup>1</sup>         | 414                        | 90             | 1624               | -3,4        | 17804          | 1,7        |
| HU              | 1498                  | 1980          | 0            | 0            | 0             | 0                | 3478 <sup>1</sup>         | 347                        | 0              | 3825               | 7,2         | 39192          | -4,9       |
| IT              | 0                     | 19032         | 3869         | 1051         | 640           | 0                | 23952                     | 3853                       | 541            | 27264              | -8,1        | 335185         | -1,5       |
| LU              | 0                     | 286           | 89           | 13           | 5             | 0                | 388                       | 284                        | 107            | 565                | -9,2        | 6617           | -2,5       |
| ME              | 0                     | 138           | 320          | 0            | 0             | 0                | 458                       | -68                        | 0              | 390                | -15,6       | 4511           | -3,7       |
| MK              | 0                     | 560           | 101          | 0            | 0             | 0                | 661                       | 201                        | 0              | 862                | -8,5        | 8563           | -1,3       |
| NL              | 365                   | 9051          | 0            | 762          | 450           | 0                | 10178 <sup>1</sup>        | 840                        | 0              | 11018              | -1,0        | 120094         | 2,3        |
| PL <sup>3</sup> | 0                     | 13082         | 188          | 100          | 88            | 0                | 13370 <sup>1</sup>        | -304                       | 57             | 13009              | -3,3        | 142409         | -0,2       |
| PT              | 0                     | 2656          | 1008         | 832          | 687           | 0                | 4496 <sup>1</sup>         | 592                        | 61             | 5027               | 3,2         | 52347          | 1,6        |
| RO              | 973                   | 2973          | 1186         | 0            | n.a.          | 0                | 5132 <sup>1</sup>         | -383                       | 12             | 4737               | -8,4        | 54774          | 0,4        |
| RS              | 0                     | 3180          | 1017         | 0            | 0             | 0                | 4197                      | 84                         | 59             | 4222               | 10,6        | 39387          | 2,8        |
| SI              | 518                   | 463           | 259          | 0            | 0             | 0                | 1240 <sup>1</sup>         | -182                       | 0              | 1058               | -7,8        | 12597          | -6,1       |
| SK              | 1251                  | 655           | 280          | 27           | 0             | 0                | 2213 <sup>1</sup>         | 282                        | 27             | 2468               | -6,4        | 27466          | -0,7       |
| <b>UCTE</b>     | <b>76421</b>          | <b>129964</b> | <b>25724</b> | <b>14379</b> | <b>9985</b>   | <b>650</b>       | <b>247138<sup>1</sup></b> | <b>568</b>                 | <b>3719</b>    | <b>243987</b>      | <b>-0,7</b> | <b>2599510</b> | <b>0,8</b> |
| UA_W            | 0                     | 741           | 11           | 0            | 0             | 0                | 752                       | -311                       | 0              | 441                | -3,3        | 4140           | -3,9       |

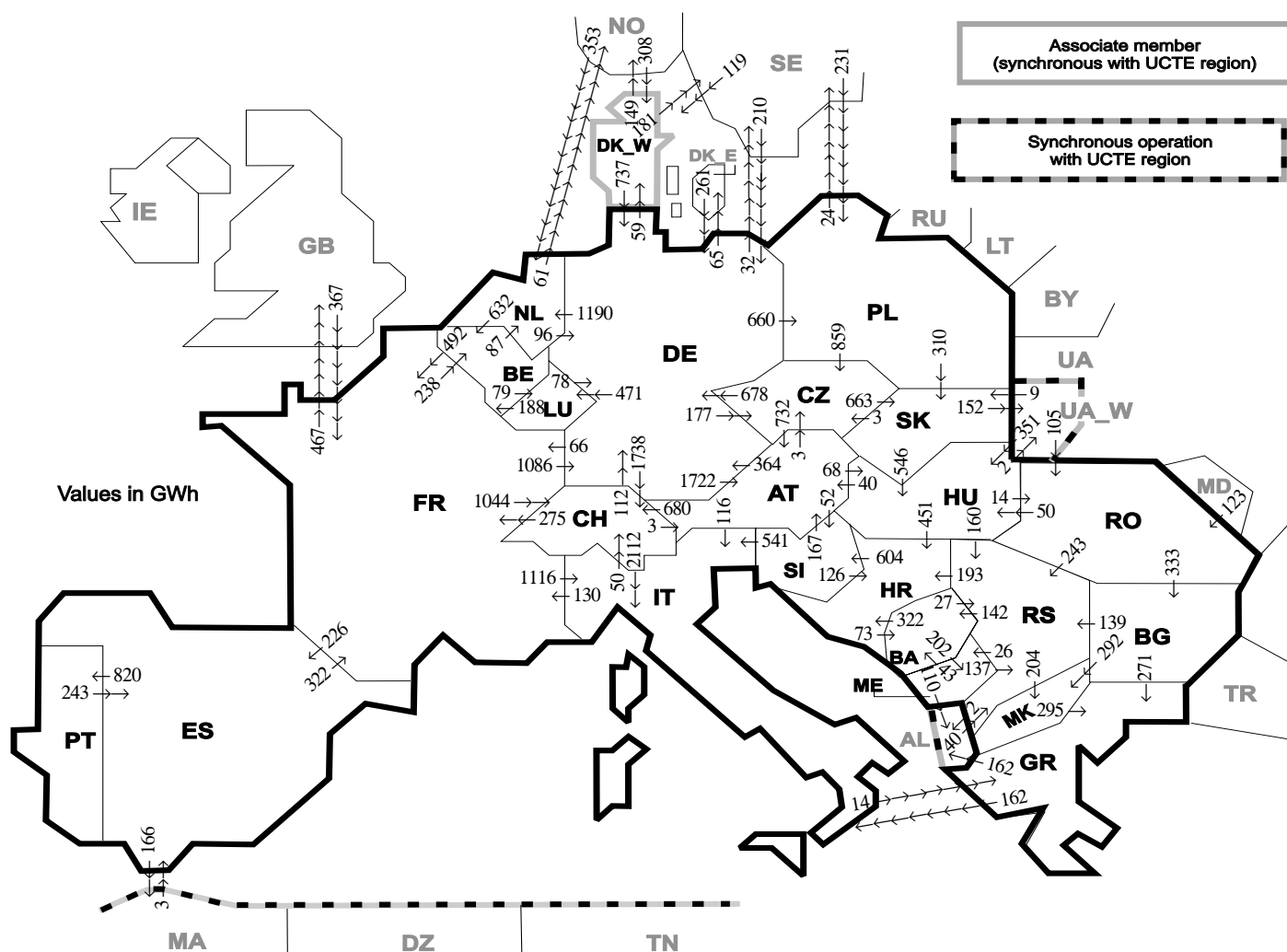
<sup>1</sup> Including deliveries from industry

<sup>2</sup> The reported figures are best estimates based on actual measurements and extrapolations

<sup>3</sup> Operational data

All representativities of the national production and consumption values used to calculate values at a representativity of 100% as stated in the table above:

| Countries        | AT  | BA  | BE  | BG  | CH  | CZ  | DE  | DK_W | ES  | FR  | GR  | HR  | HU  | IT  | LU  | ME  | MK  | NL  | PL  | PT  | RO  | RS  | SI  | SK  | UA_W |
|------------------|-----|-----|-----|-----|-----|-----|-----|------|-----|-----|-----|-----|-----|-----|-----|-----|-----|-----|-----|-----|-----|-----|-----|-----|------|
| Production       |     |     |     |     |     |     |     |      |     |     |     |     |     |     |     |     |     |     |     |     |     |     |     |     |      |
| Therm.nuclear    | 100 | 100 | 100 | 100 | 100 | 100 | 100 | 100  | 100 | 100 | 100 | 100 | 100 | 100 | 100 | 100 | 100 | 100 | 100 | 100 | 100 | 100 | 100 | 100 | 100  |
| Fossil fuels     | 100 | 100 | 100 | 100 | 100 | 100 | 100 | 100  | 97  | 100 | 100 | 100 | 100 | 100 | 100 | 100 | 100 | 100 | 100 | 94  | 100 | 100 | 100 | 100 | 100  |
| Hydro prod       | 100 | 100 | 100 | 100 | 100 | 100 | 100 | 100  | 100 | 100 | 100 | 100 | 100 | 100 | 100 | 100 | 100 | 100 | 100 | 100 | 100 | 100 | 100 | 100 | 100  |
| Other renew.     | 100 | 100 | 100 | 100 | 100 | 100 | 100 | 100  | 95  | 100 | 100 | 100 | 100 | 100 | 100 | 100 | 100 | 100 | 100 | 100 | 100 | 100 | 100 | 100 | 100  |
| Non identifiable | 100 | 100 | 100 | 100 | 100 | 100 | 100 | 100  | 100 | 100 | 100 | 100 | 100 | 100 | 100 | 100 | 100 | 100 | 100 | 100 | 100 | 100 | 100 | 100 | 100  |
| Consumption      | 100 | 100 | 100 | 100 | 100 | 100 | 100 | 100  | 98  | 100 | 100 | 100 | 100 | 100 | 100 | 100 | 100 | 100 | 100 | 97  | 100 | 100 | 100 | 100 | 100  |

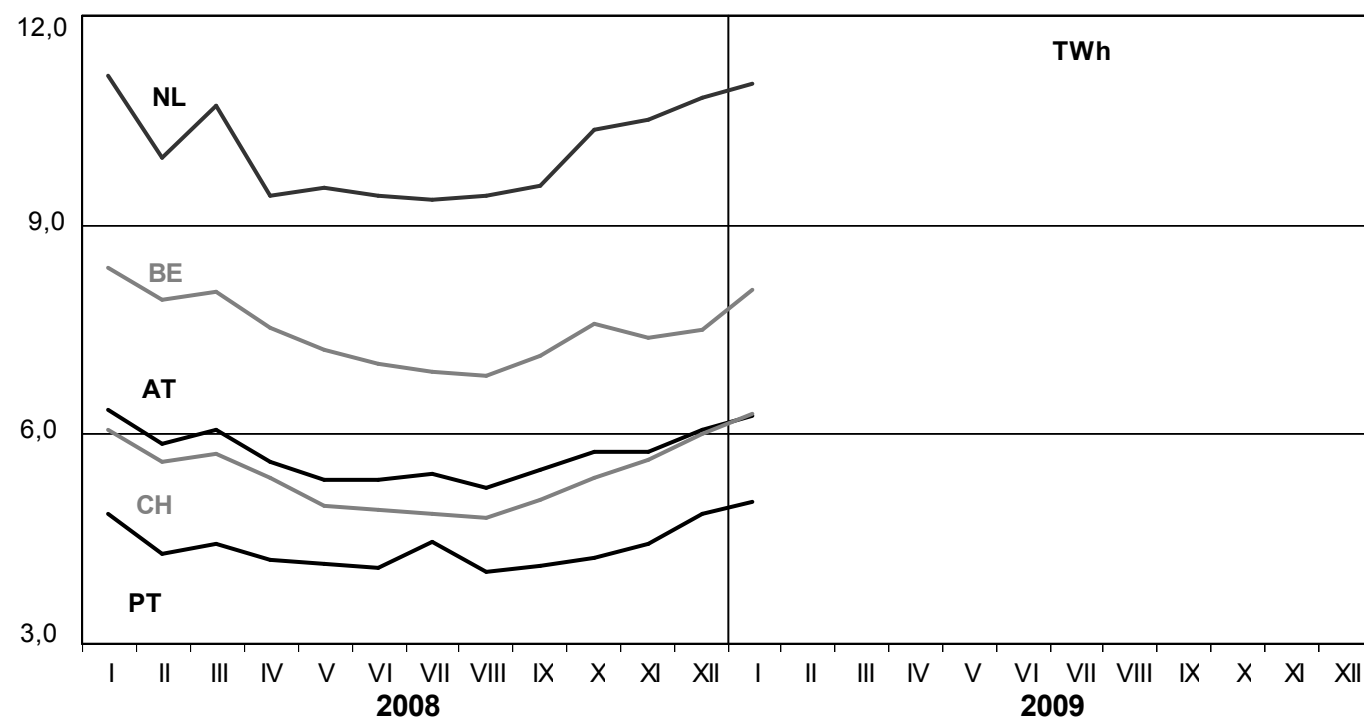
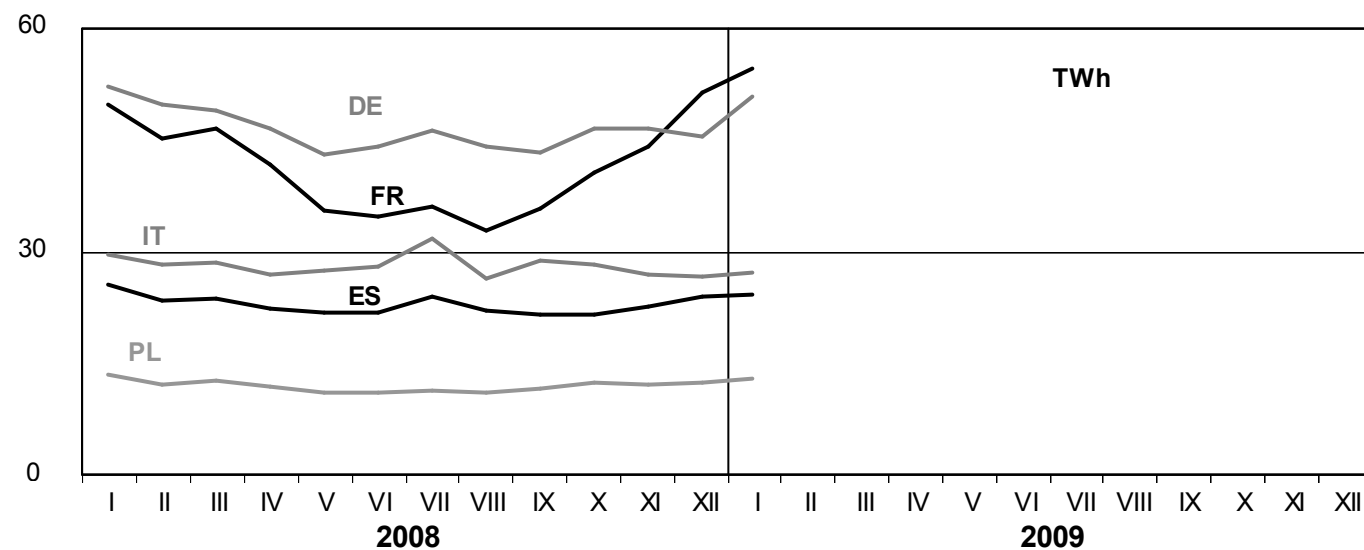
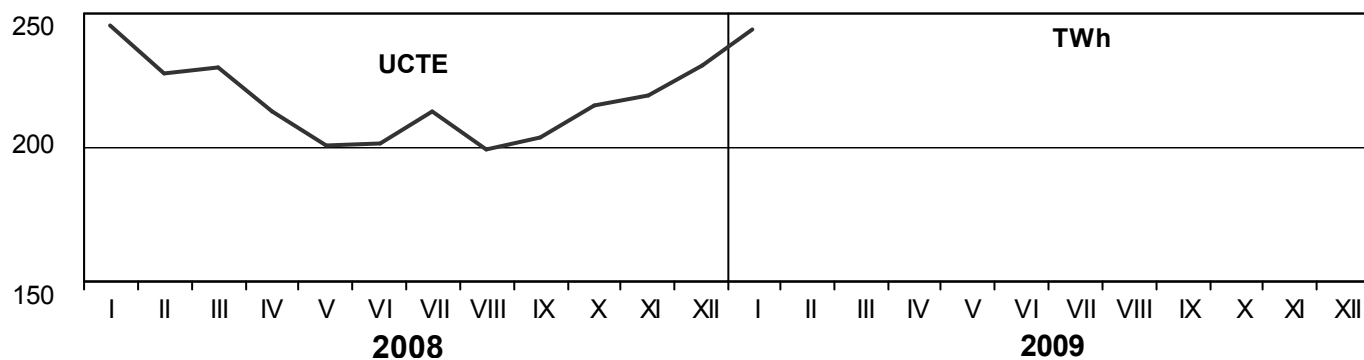


| Exporting countries    | AT          | BA         | BE          | BG         | CH          | CZ          | DE          | DK_W       | ES         | FR          | GR         | HR          | HU          | IT          | LU         | ME         | MK         | NL          | PL         | PT         | RO         | RS         | SI         | SK         | UA_W       | Other III <sup>1</sup> | Sum export   |
|------------------------|-------------|------------|-------------|------------|-------------|-------------|-------------|------------|------------|-------------|------------|-------------|-------------|-------------|------------|------------|------------|-------------|------------|------------|------------|------------|------------|------------|------------|------------------------|--------------|
| AT                     | -           | -          | -           | -          | 680         | 3           | 364         | -          | -          | -           | -          | -           | 68          | 116         | -          | -          | -          | -           | -          | -          | -          | -          | 52         | -          | -          | -                      | 1283         |
| BA                     | -           | -          | -           | -          | -           | -           | -           | -          | -          | -           | -          | 322         | -           | -           | -          | 202        | -          | -           | -          | -          | -          | 27         | -          | -          | -          | -                      | 551          |
| BE                     | -           | -          | -           | -          | -           | -           | -           | -          | -          | 492         | -          | -           | -           | 79          | -          | -          | -          | 87          | -          | -          | -          | -          | -          | -          | -          | -                      | 658          |
| BG                     | -           | -          | -           | -          | -           | -           | -           | -          | -          | -           | 271        | -           | -           | -           | -          | -          | 292        | -           | -          | -          | 0          | 139        | -          | -          | -          | 0                      | 702          |
| CH                     | 3           | -          | -           | -          | -           | -           | 112         | -          | -          | 275         | -          | -           | -           | 2112        | -          | -          | -          | -           | -          | -          | -          | -          | -          | -          | -          | -                      | 2502         |
| CZ                     | 732         | -          | -           | -          | -           | -           | 678         | -          | -          | -           | -          | -           | -           | -           | -          | -          | -          | 0           | -          | -          | -          | -          | -          | 663        | -          | 2073                   |              |
| DE                     | 1722        | -          | -           | -          | 1738        | 177         | -           | 59         | -          | 66          | -          | -           | -           | 471         | -          | -          | 1190       | 660         | -          | -          | -          | -          | -          | -          | -          | 97                     | 6180         |
| DK_W                   | -           | -          | -           | -          | -           | -           | -           | 737        | -          | -           | -          | -           | -           | -           | -          | -          | -          | -           | -          | -          | -          | -          | -          | -          | 330        | 1067                   |              |
| ES                     | -           | -          | -           | -          | -           | -           | -           | -          | 322        | -           | -          | -           | -           | -           | -          | -          | -          | -           | -          | 820        | -          | -          | -          | -          | -          | 166                    | 1308         |
| FR                     | -           | -          | 238         | -          | 1044        | -           | 1086        | -          | 226        | -           | -          | -           | -           | 1116        | -          | -          | -          | -           | -          | -          | -          | -          | -          | -          | -          | 467                    | 4177         |
| GR                     | -           | -          | -           | 0          | -           | -           | -           | -          | -          | -           | -          | -           | 162         | -           | -          | -          | 0          | -           | -          | -          | -          | -          | -          | -          | -          | 162                    | 324          |
| HR                     | -           | 73         | -           | -          | -           | -           | -           | -          | -          | -           | -          | 0           | -           | -           | -          | -          | -          | -           | -          | -          | -          | 0          | 604        | -          | -          | 677                    |              |
| HU                     | 40          | -          | -           | -          | -           | -           | -           | -          | -          | -           | -          | 451         | -           | -           | -          | -          | -          | -           | -          | -          | 14         | 160        | 0          | 2          | -          | 667                    |              |
| IT                     | 0           | -          | -           | -          | 50          | -           | -           | -          | -          | 130         | 14         | -           | -           | -           | -          | -          | -          | -           | -          | -          | -          | -          | 0          | -          | -          | 194                    |              |
| LU                     | -           | -          | 188         | -          | -           | -           | 78          | -          | -          | -           | -          | -           | -           | -           | -          | -          | -          | -           | -          | -          | -          | -          | -          | -          | -          | 266                    |              |
| ME                     | -           | 43         | -           | -          | -           | -           | -           | -          | -          | -           | -          | -           | -           | -           | -          | -          | -          | -           | -          | -          | -          | -          | -          | -          | 110        | 290                    |              |
| MK                     | -           | -          | -           | 0          | -           | -           | -           | -          | -          | -           | 295        | -           | -           | -           | -          | -          | -          | -           | -          | -          | -          | -          | -          | -          | -          | 295                    |              |
| NL                     | -           | -          | 632         | -          | -           | -           | 96          | -          | -          | -           | -          | -           | -           | -           | -          | -          | -          | -           | -          | -          | -          | -          | -          | -          | 61         | 789                    |              |
| PL                     | -           | -          | -           | -          | -           | 859         | 0           | -          | -          | -           | -          | -           | -           | -           | -          | -          | -          | -           | -          | -          | -          | -          | -          | 310        | 24         | 1193                   |              |
| PT                     | -           | -          | -           | -          | -           | -           | -           | -          | 243        | -           | -          | -           | -           | -           | -          | -          | -          | -           | -          | -          | -          | -          | -          | -          | -          | 243                    |              |
| RO                     | -           | -          | -           | 333        | -           | -           | -           | -          | -          | -           | -          | -           | 50          | -           | -          | -          | -          | -           | -          | -          | -          | -          | -          | -          | 0          | 0                      | 626          |
| RS                     | -           | 142        | -           | 0          | -           | -           | -           | -          | -          | -           | -          | 193         | 0           | -           | 26         | 204        | -          | -           | -          | -          | 0          | -          | -          | -          | -          | 2                      | 567          |
| SI                     | 167         | -          | -           | -          | -           | -           | -           | -          | -          | -           | 126        | 541         | -           | -           | -          | -          | -          | -           | -          | -          | -          | -          | -          | -          | -          | 834                    |              |
| SK                     | -           | -          | -           | -          | -           | 3           | -           | -          | -          | -           | -          | 546         | -           | -           | -          | -          | -          | 0           | -          | -          | -          | -          | -          | 152        | -          | 701                    |              |
| UA_W                   | -           | -          | -           | -          | -           | -           | -           | -          | -          | -           | -          | 351         | -           | -           | -          | -          | -          | -           | -          | -          | 105        | -          | 9          | -          | -          | 465                    |              |
| Other III <sup>1</sup> | -           | -          | -           | 0          | -           | -           | 471         | 427        | 3          | 367         | 0          | -           | -           | -           | -          | 0          | -          | 353         | 231        | -          | 123        | 40         | -          | -          | -          | 2015                   |              |
| <b>Sum imp</b>         | <b>2664</b> | <b>258</b> | <b>1058</b> | <b>333</b> | <b>3512</b> | <b>1042</b> | <b>3622</b> | <b>486</b> | <b>472</b> | <b>1652</b> | <b>580</b> | <b>1092</b> | <b>1015</b> | <b>4047</b> | <b>550</b> | <b>228</b> | <b>496</b> | <b>1630</b> | <b>891</b> | <b>820</b> | <b>242</b> | <b>746</b> | <b>656</b> | <b>982</b> | <b>154</b> | <b>1419</b>            | <b>30647</b> |

Sum of physical energy flows between UCTE countries = 26594GWh Total physical energy flows = 30647GWh

<sup>1</sup> Other III: Albania, Belarus, Denmark East, Great Britain, Morocco, Republic of Moldavia, Norway, Sweden, Republic of Turkey and Ukraine

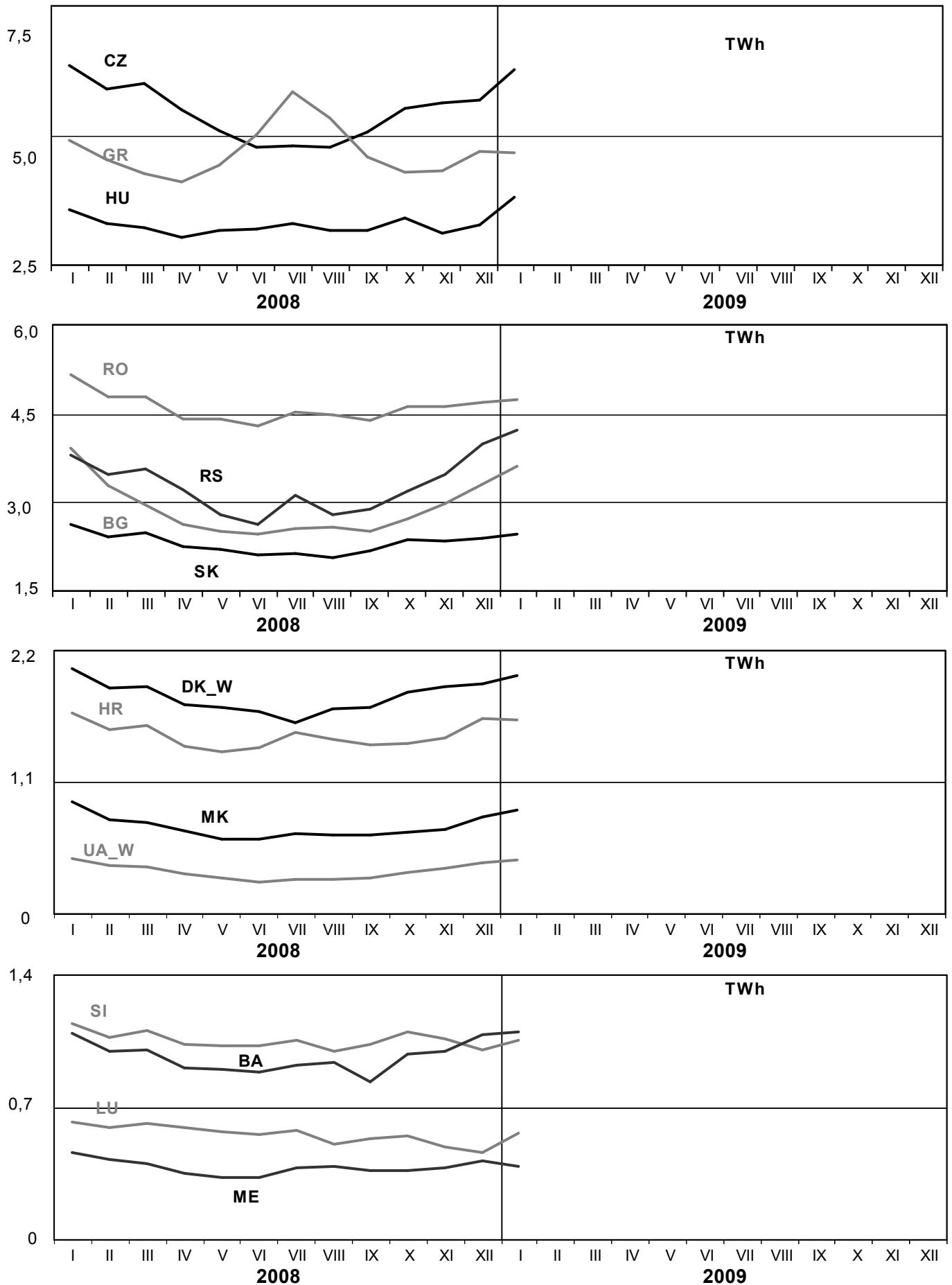
These physical energy flows were measured on the cross-frontier transmission lines (≤ 110 kV) listed in table 9 of the Statistical Yearbook. These values may differ from the official statistics and the exchange balances in chapter 1.



# 3

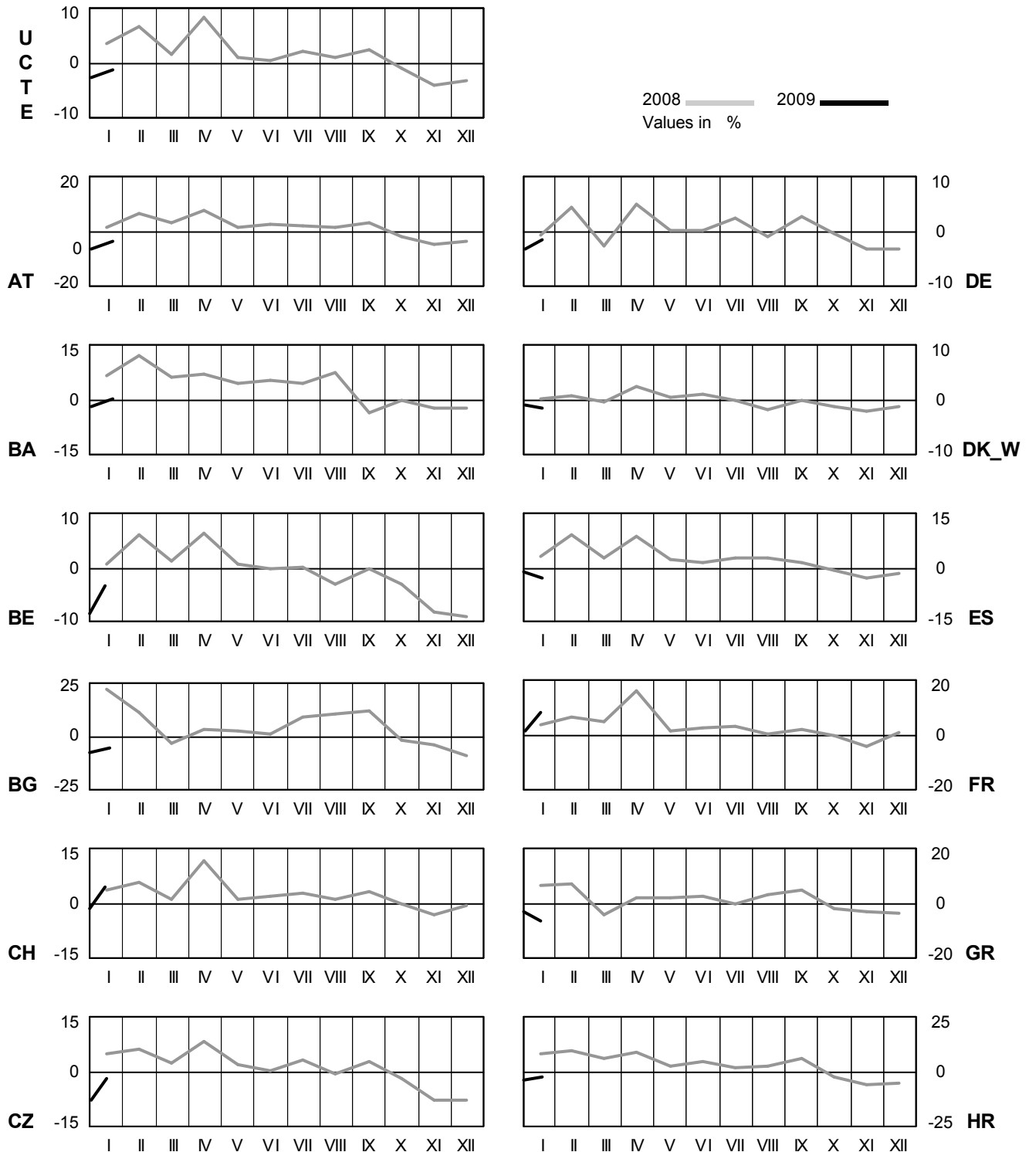
## Monthly consumption

January 2009



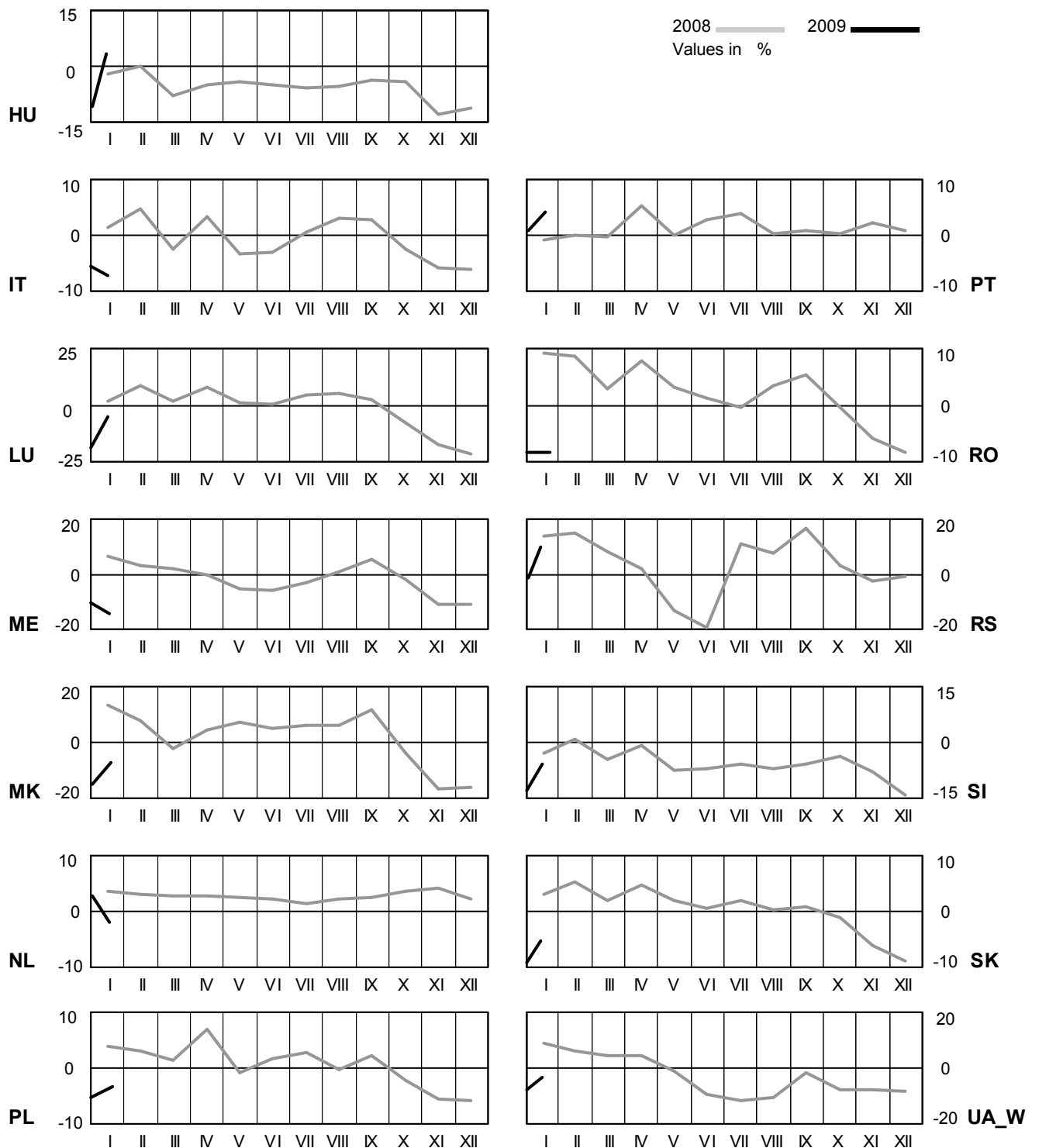
# 4 Monthly consumption variation

January 2009



# 4 Monthly consumption variation

January 2009

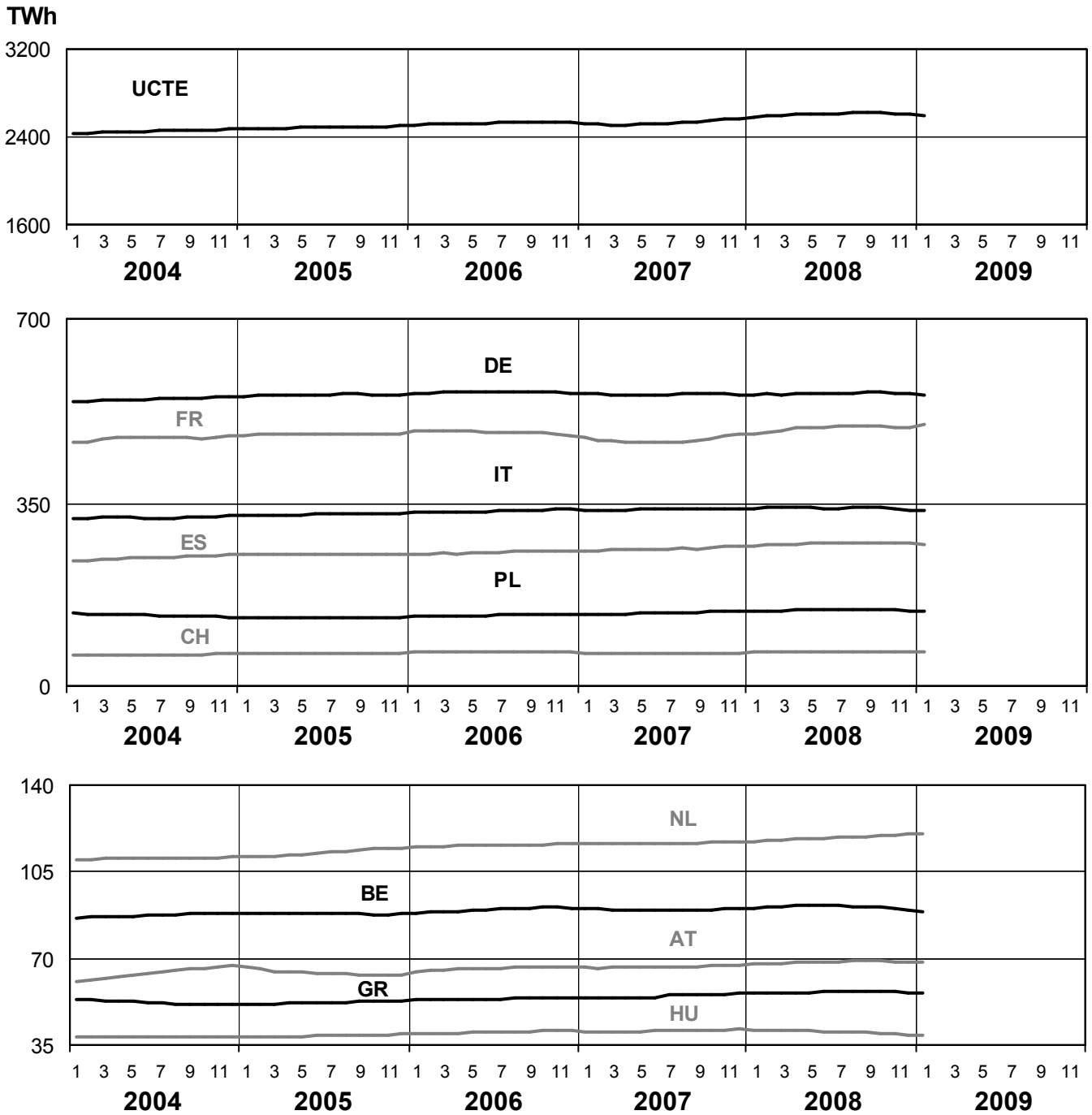




# 5

## Consumption of the last 12 months

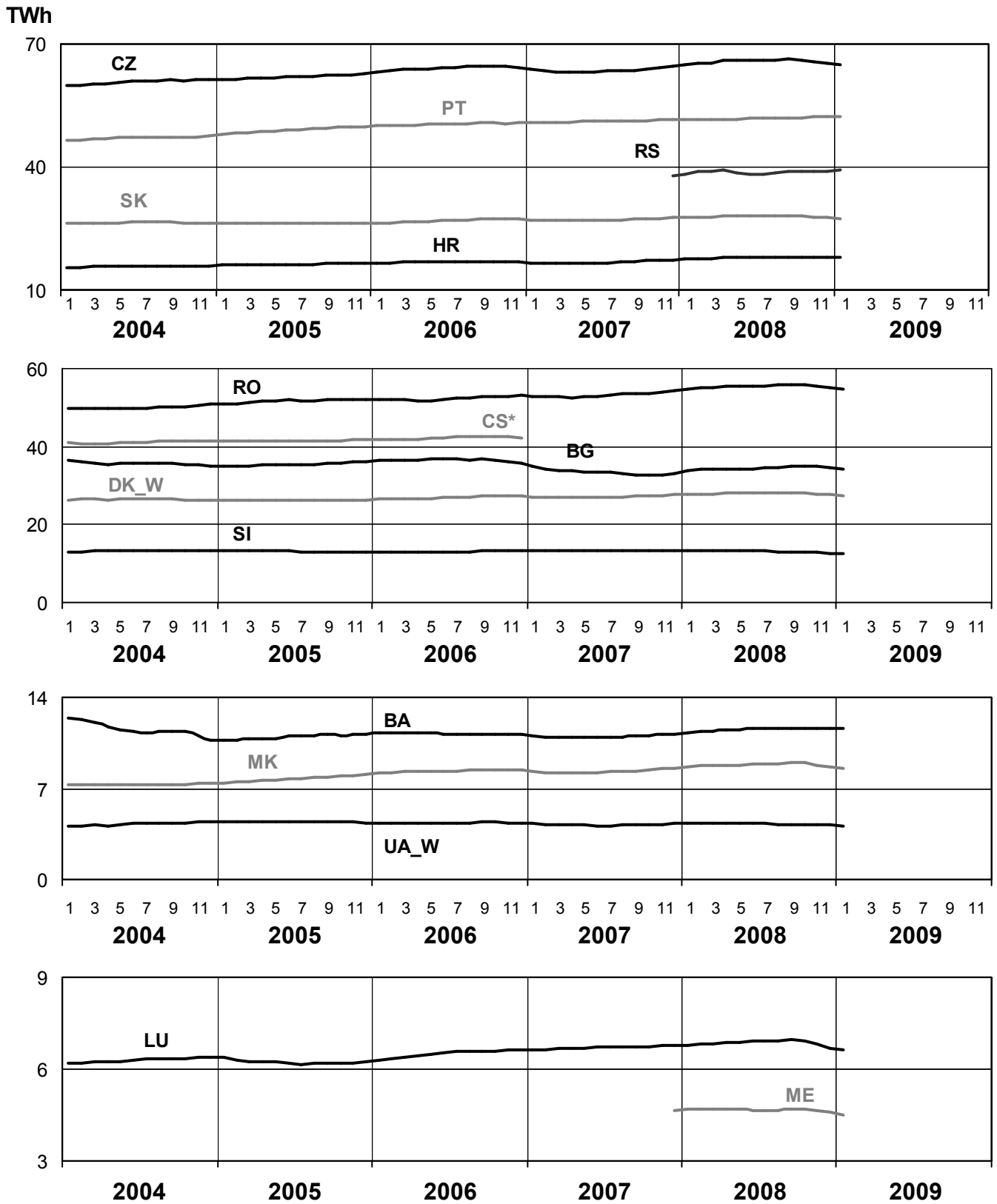
January 2009



# 5

## Consumption of the last 12 months

January 2009

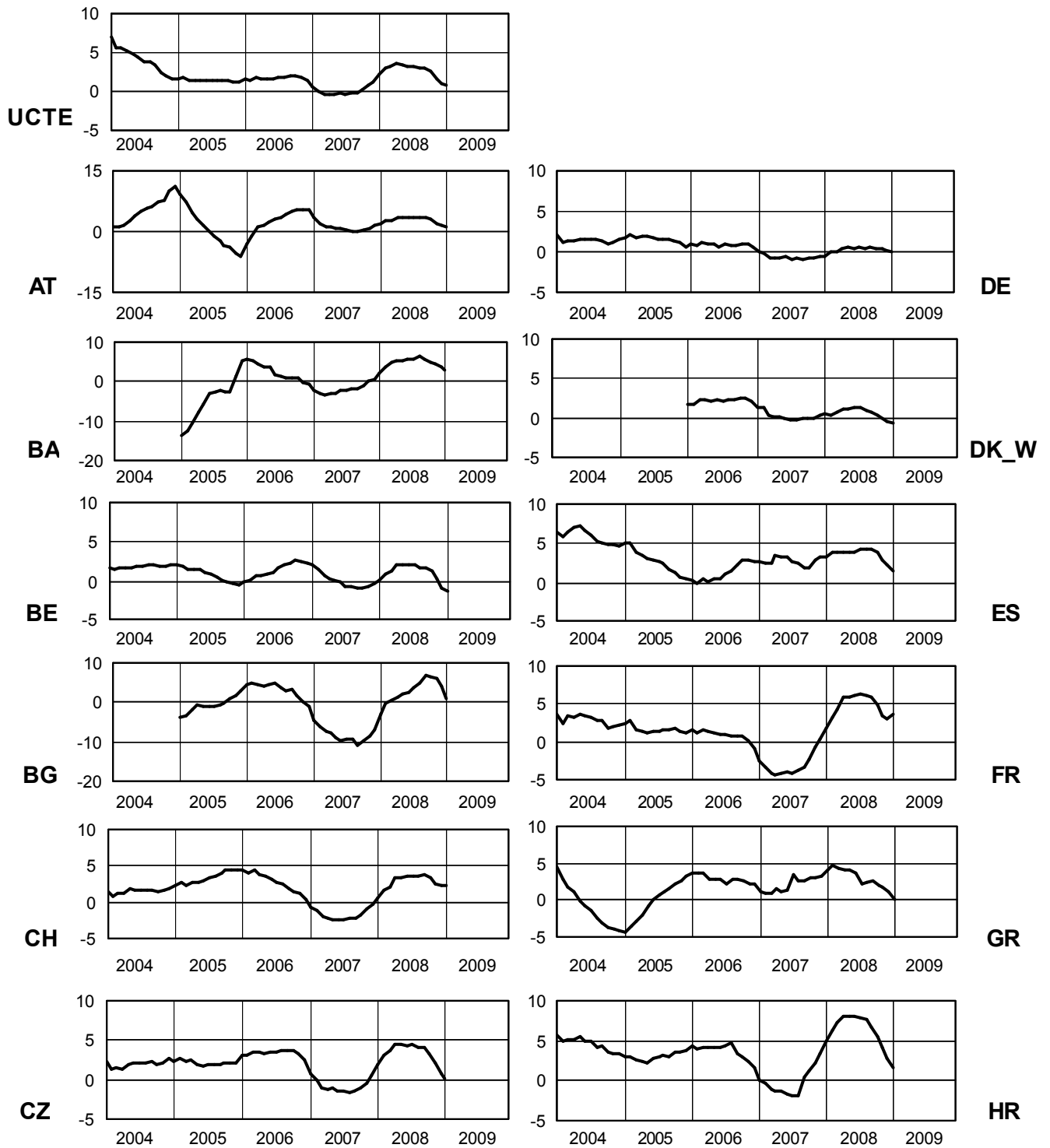


\* CS consumption values until December 2006; from 2007 on ME and RS as separate countries

# 6

## Variation of the last 12 months' consumption in %

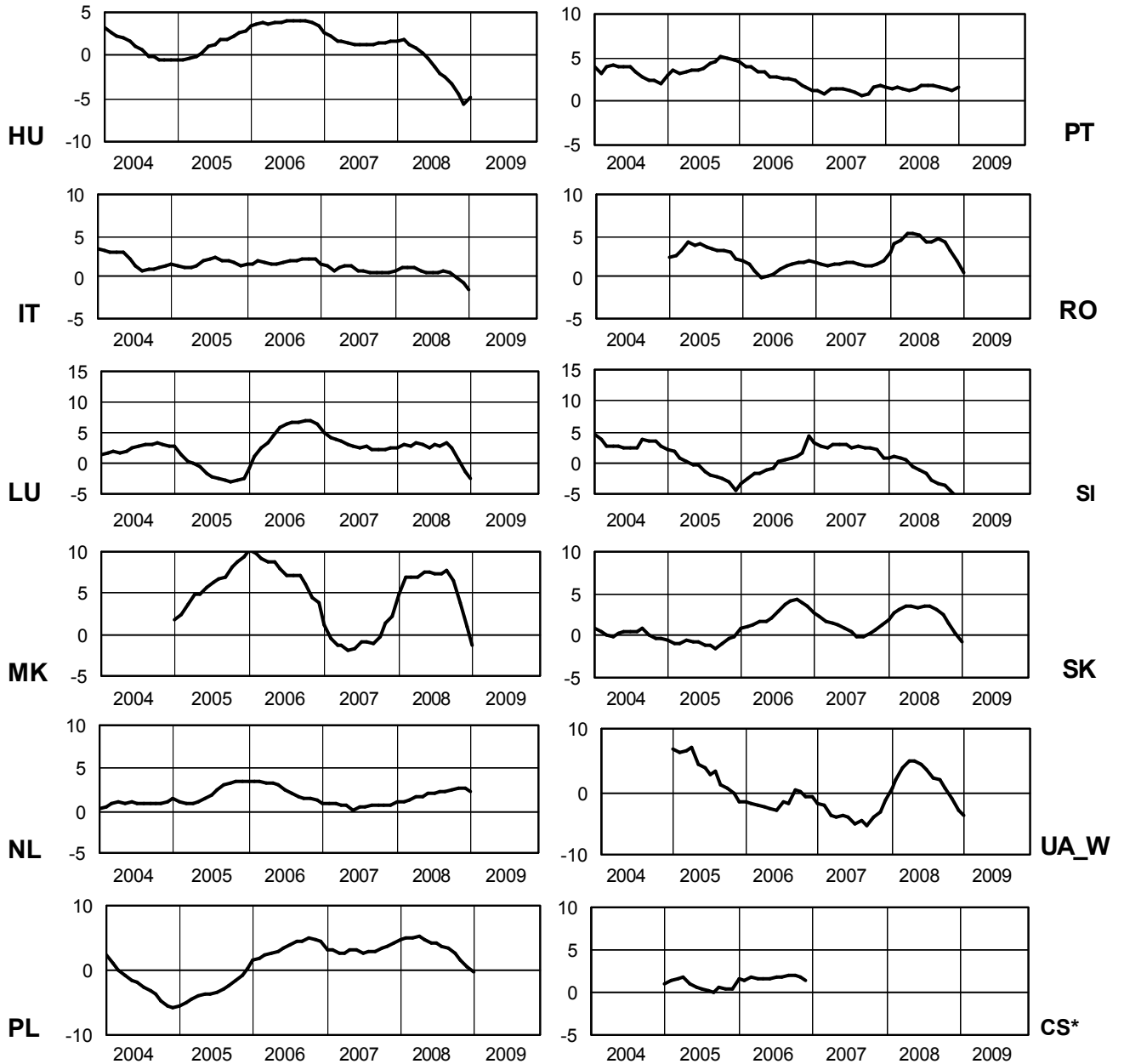
January 2009



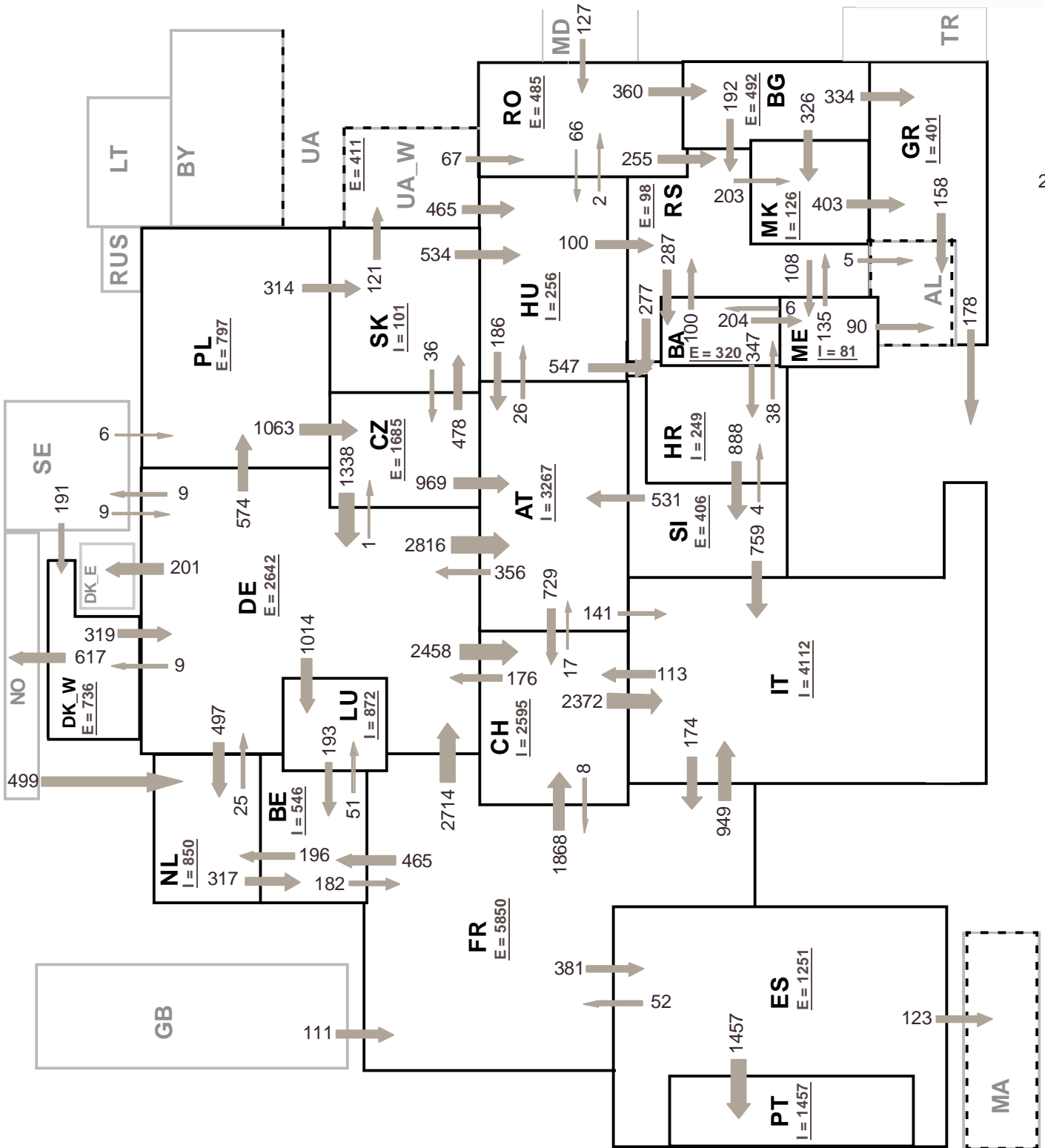
# 6

## Variation of the last 12 months' consumption in %

January 2009



\* CS consumption values of the last 12 months until December 2006; variation ME and RS will be published from the second quarter 2009 on



203

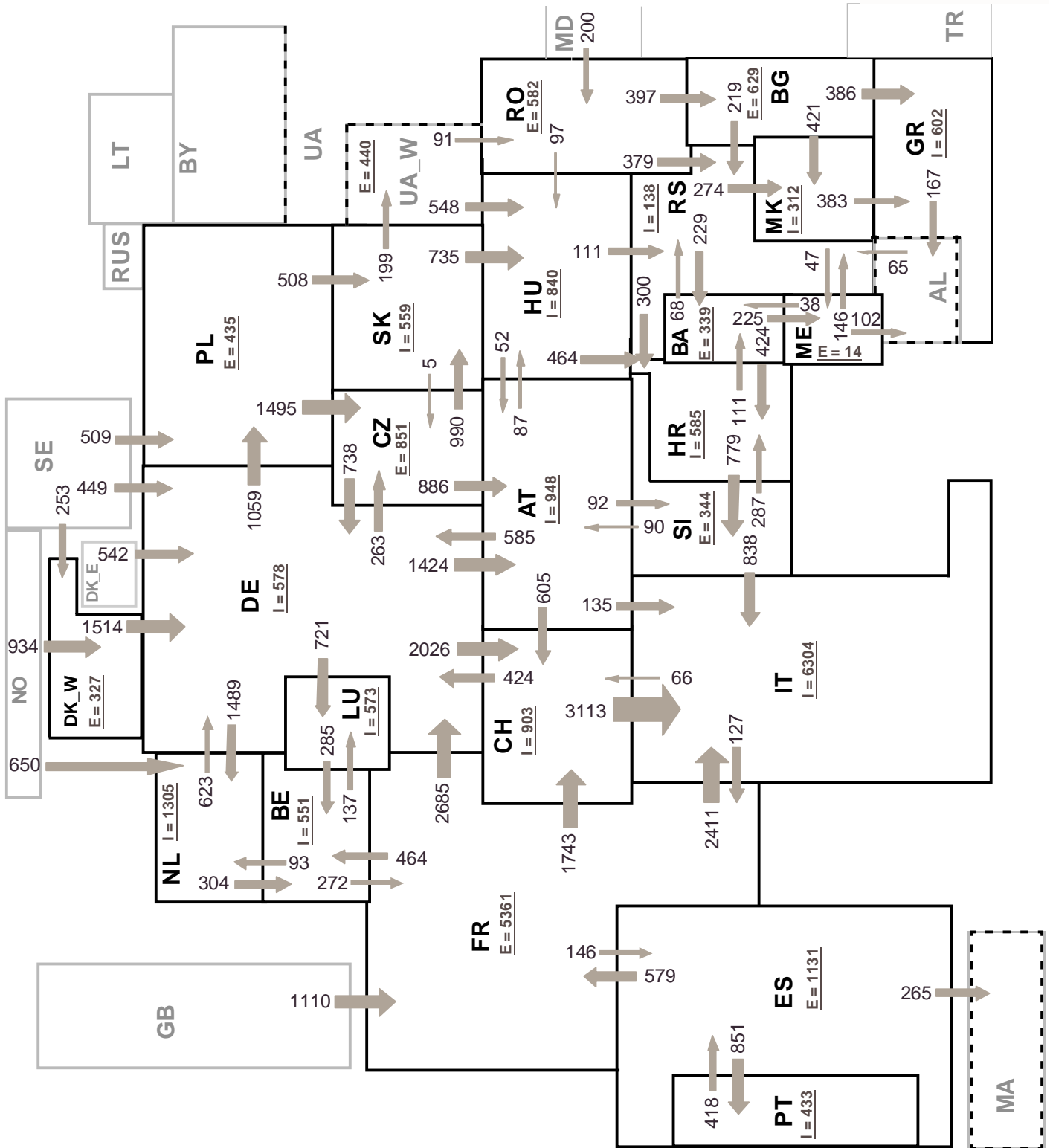
Sum of load flows in MW

UCTE = 32218 MW

Total = 35017 MW

Synchronous operation with UCTE region

I = Import balance  
E = Export balance



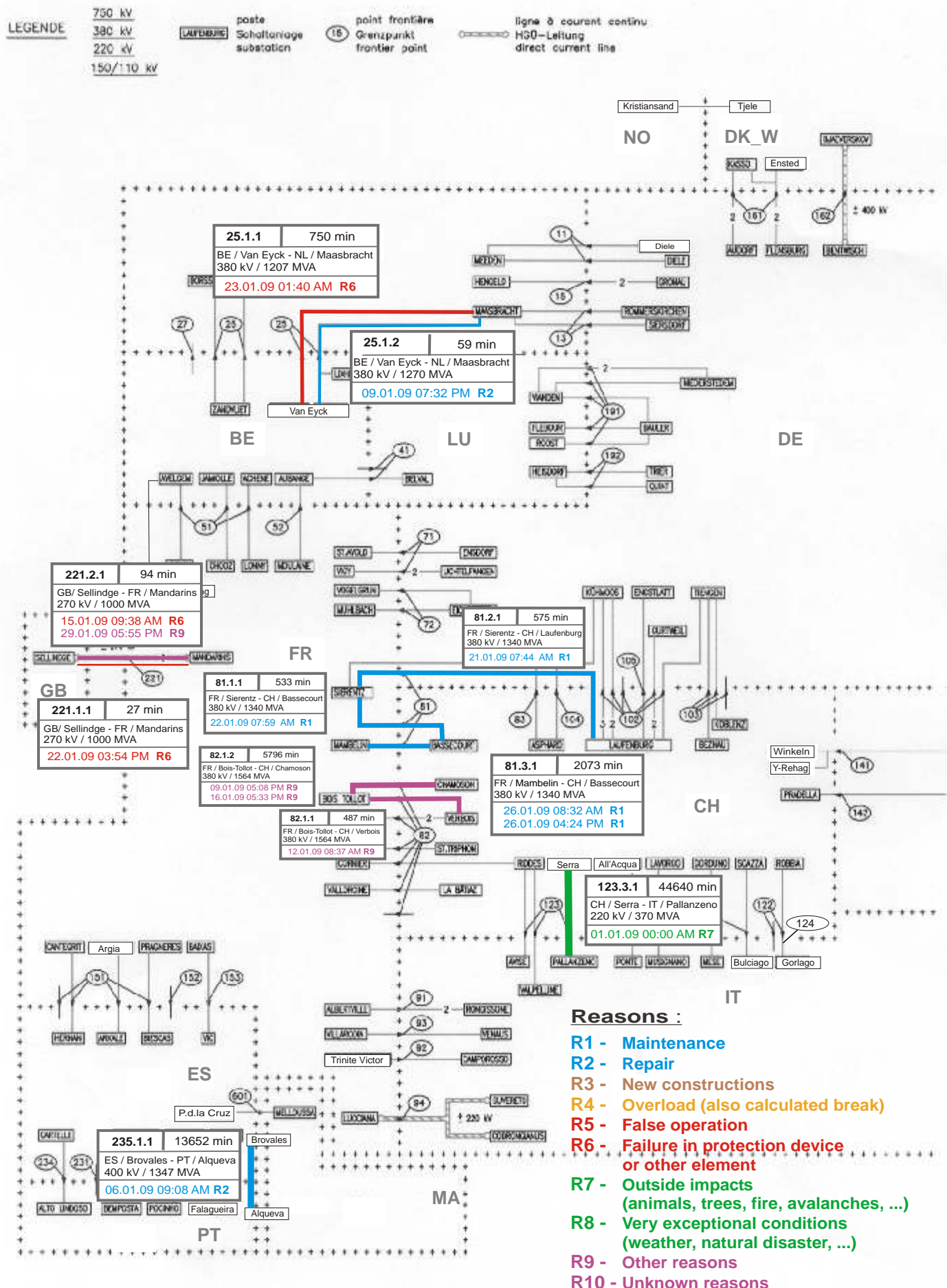
Sum of load flows in MW

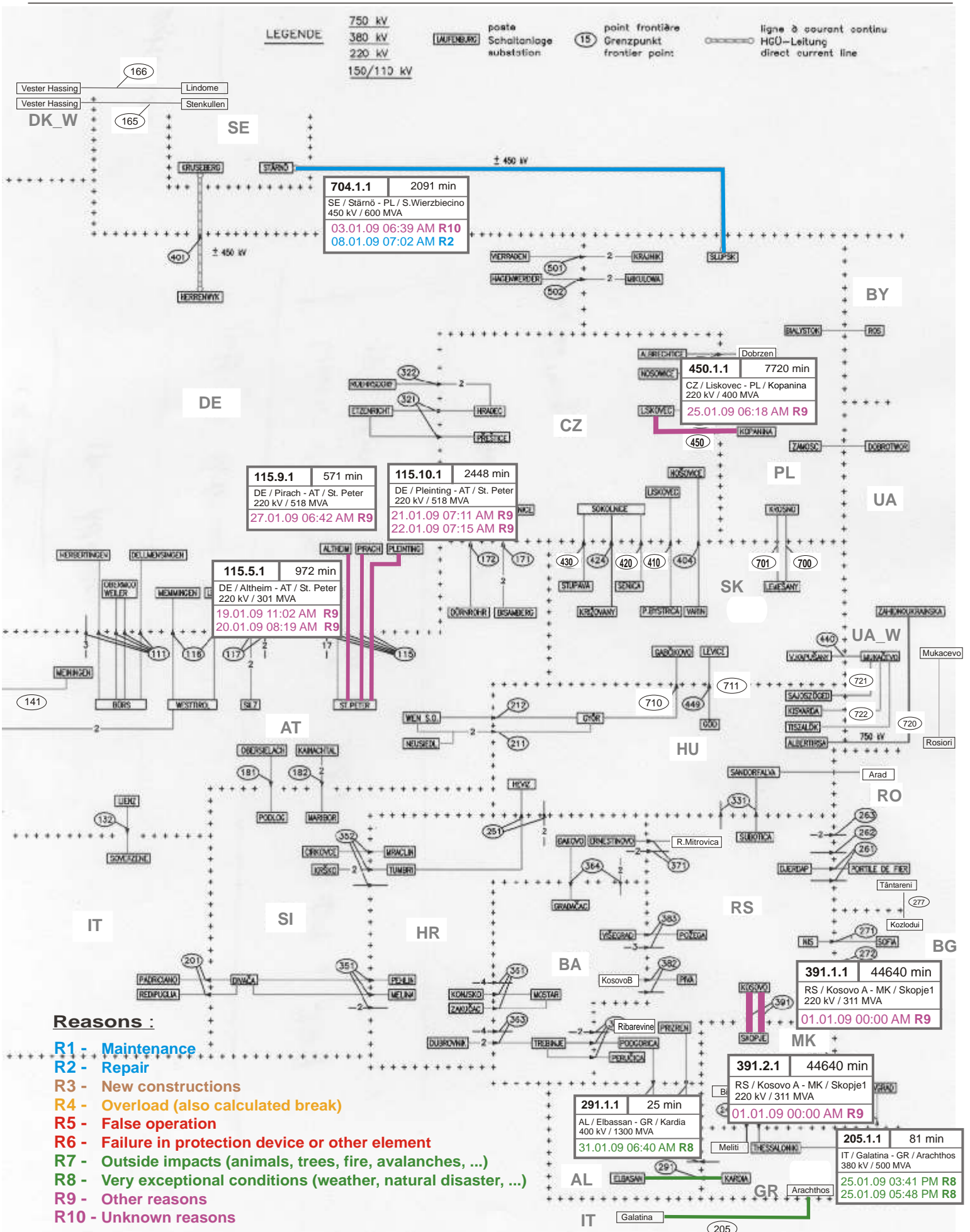
UCTE = 36863 MW

Total = 42947 MW

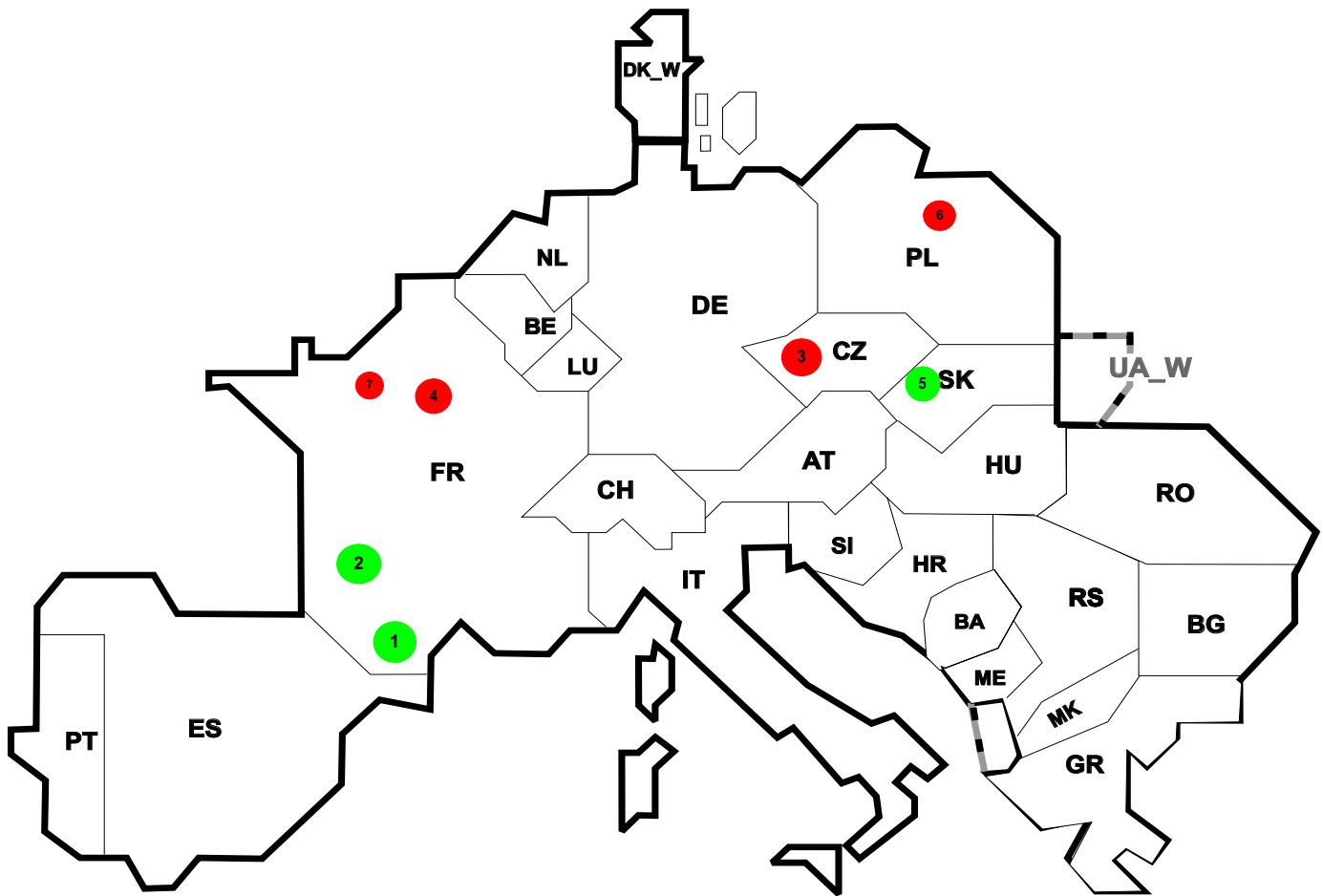
Synchronous operation with UCTE region

I = Import balance  
E = Export balance









Reasons:

**R4** Overload (also calculated break)

**R5** False operation

**R6** Failure in protection device or other element

**R7** Outside impacts (animals, trees, fire, avalanches, ...)

**R8** Very exceptional conditions (weather, natural disaster, ...)

**R9** Other reasons

**R10** Unknown reasons

| No | Country | Substation | Reason | Energy not supplied <sup>2</sup> [ MWh ] | Total loss of power [ MW ] | Restoration time [ min ] | Equivalent time of interruption <sup>1</sup> |
|----|---------|------------|--------|--|----------------------------|--------------------------|--|
| 1  | FR      | Vich       | R8     | 497                                      | 254                        | 117                      | 0,523  |
| 2  | FR      | Colayrac   | R8     | 381                                      | 64                         | 354                      | 0,401  |
| 3  | CZ      | Prestice   | R5     | 11                                       | 130                        | 5                        | 0,089  |
| 4  | FR      | Charenton  | R6     | 64                                       | 72                         | 53                       | 0,067  |
| 5  | SK      | Sučany     | R8     | 3  | 15                         | 3                        | 0,057  |
| 6  | PL      | Klikow a   | R6     | 8  | 9                          | 54                       | 0,030  |
| 7  | FR      | Flers      | R7     | 2  | 8                          | 18                       | 0,002  |

<sup>1</sup> ( year [in min] \* energy not supplied ) / consumption last 12 months

| Control area | Export Programs | Import Programs | Export Programs at 03:00 | Import Programs at 03:00 | Export Programs at 11:00 | Import Programs at 11:00 |
|--------------|-----------------|-----------------|--------------------------|--------------------------|--------------------------|--------------------------|
| AT           | 576928          | 932829          | 1550                     | 418                      | 424                      | 845                      |
| BA           | 454548          | 163962          | 157                      | 100                      | 181                      | 100                      |
| BE           | 477300          | 777236          | 0                        | 458                      | 747                      | 1198                     |
| BG           | n.a.            | n.a.            | n.a.                     | n.a.                     | n.a.                     | n.a.                     |
| CH           | 1626620         | 2651021         | 1206                     | 3781                     | 3116                     | 4026                     |
| CZ           | 1867513         | 775585          | 2774                     | 983                      | 2272                     | 1378                     |
| DE           | 3794248         | 1241761         | 2592                     | 2473                     | 2158                     | 1446                     |
| DK_W         | 384492          | 257767          | 430                      | 0                        | 325                      | 397                      |
| ES           | n.a.            | n.a.            | n.a.                     | n.a.                     | n.a.                     | n.a.                     |
| FR           | 6048506         | 3453145         | 8927                     | 3125                     | 9294                     | 3896                     |
| GR           | 183598          | 461695          | 305                      | 725                      | 0                        | 590                      |
| HR           | 58526           | 473302          | 313                      | 580                      | 0                        | 602                      |
| HU           | 807679          | 1152882         | 1111                     | 1345                     | 1211                     | 2048                     |
| IT           | 194464          | 4046566         | 287                      | 4399                     | 193                      | 6517                     |
| ME           | n.a.            | n.a.            | n.a.                     | n.a.                     | n.a.                     | n.a.                     |
| MK           | 0               | 209900          | 140                      | 268                      | 140                      | 450                      |
| NL           | 1001568         | 1850211         | 1293                     | 2144                     | 1637                     | 2950                     |
| PL           | 436487          | 260370          | 682                      | 20                       | 800                      | 509                      |
| PT           | 40635           | 637186          | 0                        | 1453                     | 0                        | 761                      |
| RO           | 530944          | 150383          | 616                      | 142                      | 839                      | 252                      |
| RS           | 393925          | 440677          | 430                      | 315                      | 547                      | 590                      |
| SI           | 787505          | 605674          | 1449                     | 1013                     | 1239                     | 903                      |
| SK           | 491793          | 695526          | 466                      | 491                      | 603                      | 1054                     |
| UA_W         | 303407          | 0               | 409                      | 0                        | 440                      | 0                        |

- Control areas can differ from national borders ( i.e. German block which includes parts of AT, LU and DK ).

- Values are calculated on an hourly base ( MWh ).

- This values are not the provisional values entered in the VULCANUS system, but the definitive values after an eventual correction during the actual date.

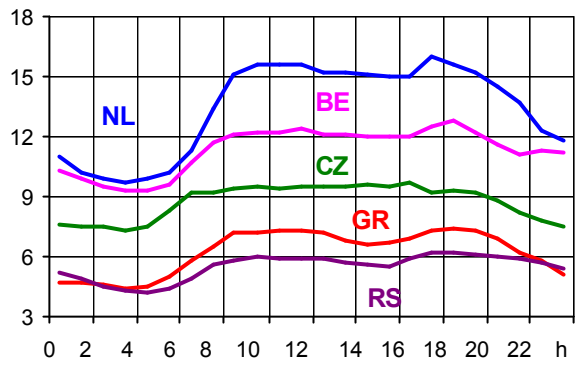
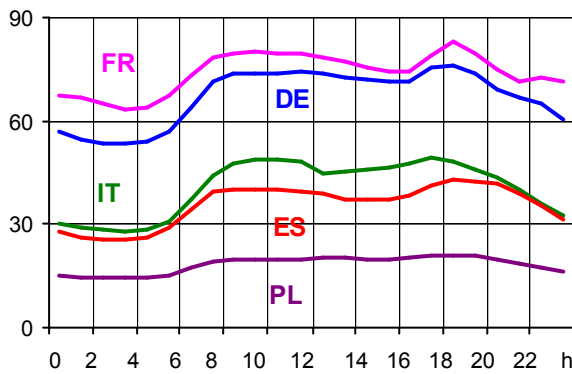
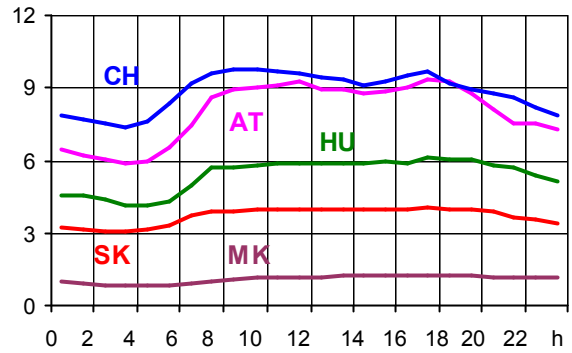
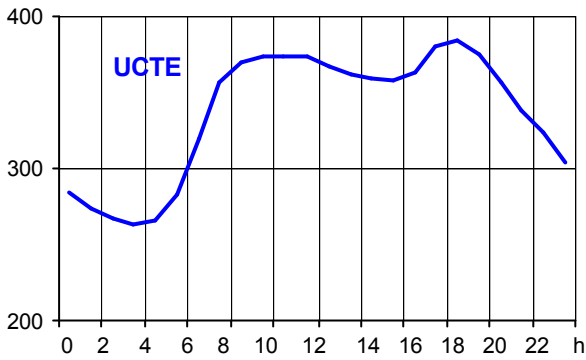
- Export Programs: Sum of all positive values of every hour of every border  
 - Import Programs: Sum of all negative values of every hour of every border

- Export Programs at 03:00: Sum of all positive values the third Wednesday from 02:00 to 03:00 a.m.  
 - Import Programs at 03:00: Sum of all negative values the third Wednesday from 02:00 to 03:00 a.m.

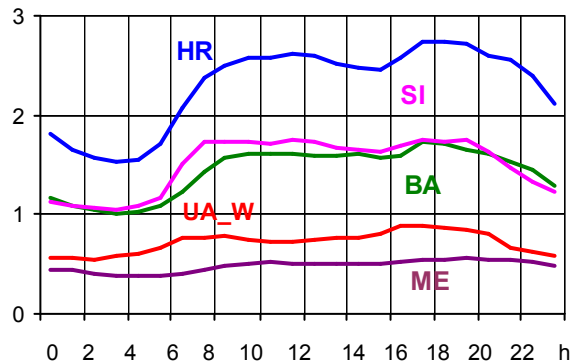
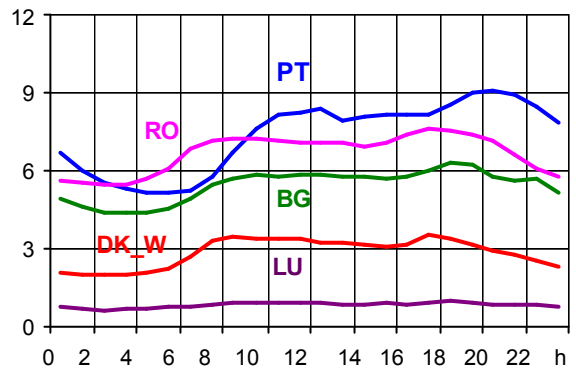
- Export Programs at 11:00: Sum of all positive values the third Wednesday from 10:00 to 11:00 a.m.  
 - Import Programs at 11:00: Sum of all negative values the third Wednesday from 10:00 to 11:00 a.m.

Consumption hourly load curves on 21.01.2009 CET

Values in GW



|                 | Highest load<br>MW | var.% <sup>1</sup> | Load<br>representativity<br>% |
|-----------------|--------------------|--------------------|-------------------------------|
| AT              | 9325               | 4,1                | 100                           |
| BA              | 1726               | -3,7               | 100                           |
| BE <sup>2</sup> | 12789              | -3,8               | 100                           |
| BG              | 6303               | -6,9               | 99                            |
| CH              | 9752               | 1,5                | 100                           |
| CZ              | 9666               | -1,4               | 100                           |
| DE              | 75875              | -6,3               | 91                            |
| DK_W            | 3537               | -3,5               | 100                           |
| ES              | 42865              | 1,8                | 98                            |
| FR              | 82807              | 6,3                | 100                           |
| GR              | 7365               | -8,1               | 100                           |
| HR              | 2746               | 0,2                | 100                           |
| HU              | 6156               | -2,1               | 100                           |
| IT              | 49307              | -6,3               | 100                           |
| LU              | 972                | -6,6               | 100                           |
| ME              | 557                | -16,9              | 100                           |
| MK              | 1264               | -11,7              | 100                           |
| NL              | 15960              | -7,8               | 100                           |
| PL <sup>3</sup> | 20946              | -4,4               | 100                           |
| PT              | 9112               | 8,7                | 97                            |
| RO              | 7652               | -9,3               | 100                           |
| RS              | 6194               | -5,0               | 100                           |
| SI              | 1744               | -6,5               | 100                           |
| SK              | 4053               | -5,2               | 100                           |
| <b>UCTE</b>     | <b>384830</b>      | <b>-1,9</b>        |                               |
| UA_W            | 894                | -5,3               | 100                           |



<sup>1</sup> Variation as compared to corresponding month of the previous year

<sup>2</sup> The reported figures are best estimates based on actual measurements and extrapolations.

<sup>3</sup> Operational data

## Contact

Boulevard Saint-Michel, 15  
B-1040 Brussels – Belgium  
Tel +32 2 741 69 40  
Fax +32 2 741 69 49

[info@ucte.org](mailto:info@ucte.org)  
[www.ucte.org](http://www.ucte.org)