

UCTE



January 2007

Monthly provisional values
union for the co-ordination of transmission of electricity

Table of contents		Page
1	Electricity supply situation of the countries	2
2	Physical energy flows	3
3	Monthly consumption	4
4	Monthly consumption variation	6
5	Consumption of the last 12 months	8
6	Variation of the last 12 months' consumption	10
7	Load flows (night)	12
8	Load flows (day)	13
9	Unavailability of international tie lines (major events)	14
10	Network reliability (major events)	16
11	Scheduled exchanges	17
12	Load on the 3 rd Wednesday	18

General remarks and abbreviations used in the tables

- All values of production and consumption in chapter 1, 3&4, 5&6 and 12 are calculated to represent 100% of the national values.
- DK_W Denmark West represents the Western part of Denmark synchronously interconnected with UCTE (Jutland and Funen).
- UA_W Ukraine West represents the so-called Burshtyn Island synchronously interconnected with UCTE.
- CET Central European Time
- The Bulgarian values of production and consumption are gross values.

1

Electricity supply situation of the countries

January 2007

Countries	Net production in GWh							Exchange balance in GWh	Pump in GWh	Consumption in GWh			
	Therm. nuclear	Therm conv.	Hydro prod	Other renew.	Of which wind	Not identify	Total			monthly	var. [%]	last 12 months	var. [%]
AT	0	2100	2361	0	0	787	5248 ¹	1299	281	6266	-2,2	66359	3,3
BA	0	704	283	0	0	0	987	37	0	1024	-8,4	11015	-2,3
BE ²	4123	3091	152	288	61	0	7654 ¹	706	140	8220	-3,0	89647	1,6
BG	1405	1831	169	0	0	0	3405	-134	67	3204	-19,9	34877	-4,4
CH	2413	199	2293	98	1	0	5003 ¹	1011	158	5856	-5,9	62856	-0,6
CZ	2421	5063	236	26	12	0	7746 ¹	-1610	93	6043	-9,1	63714	0,7
DE	13193	32990	1940	8975	7512	0	57098 ¹	-3853	734	52511	-0,7	558698	0,1
ES	5288	14411	2759	2492	2134	0	24950 ¹	95	359	24686	3,3	260408	2,7
FR	40872	6612	5356	785	427	0	53625 ¹	-4809	758	48058	-8,4	473963	-2,4
GR	0	4104	313	140	130	0	4557 ¹	162	92	4627	-4,7	53762	1,1
HR	0	684	369	3	3	0	1056 ¹	520	21	1555	-7,6	16683	0,1
HU ³	1342	2080	0	0	0	0	3422 ¹	214	0	3636	-2,1	40552	2,6
IT	0	22060	2819	771	334	0	25650 ¹	4360	781	29229	-1,2	337433	1,7
LU	0	297	97	17	11	0	411	311	112	610	-0,2	6615	4,9
ME	0	59	74	2	0	0	135	297	0	432	n.a.	432	n.a.
MK	0	585	106	0	0	0	691 ¹	138	0	829	-11,4	8270	1,1
NL	361	8306	0	968	537	0	9635 ¹	1203	0	10838	1,0	116252	1,1
PL	0	13175	249	73	65	0	13497 ¹	-487	61	12949	-2,7	136133	3,3
PT	0	3093	1197	422	249	0	4712 ¹	250	40	4922	0,8	50738	1,3
RO	489	3612	933	0	0	0	5034 ¹	-297	4	4733	-2,6	52892	1,8
RS	0	2927	785	0	0	0	3712	133	134	3711	n.a.	128	n.a.
SI	518	480	164	0	0	0	1162	21	0	1183	-2,8	13297	3,3
SK	1422	647	391	26	1	0	2486 ¹	92	22	2556	-2,6	27141	2,8
UCTE	73847	129110	23046	15086	11477	787	241876¹	-341	3857	237678	-3,3	2519533⁴	0,4
DK_W	0	1402	5	1035	913	0	2442 ¹	-395	0	2047	-1,8	21699	1,3
UA_W	0	719	15	0	0	0	734 ¹	-315	0	419	-9,5	4284	-1,7

¹ Including deliveries from industry

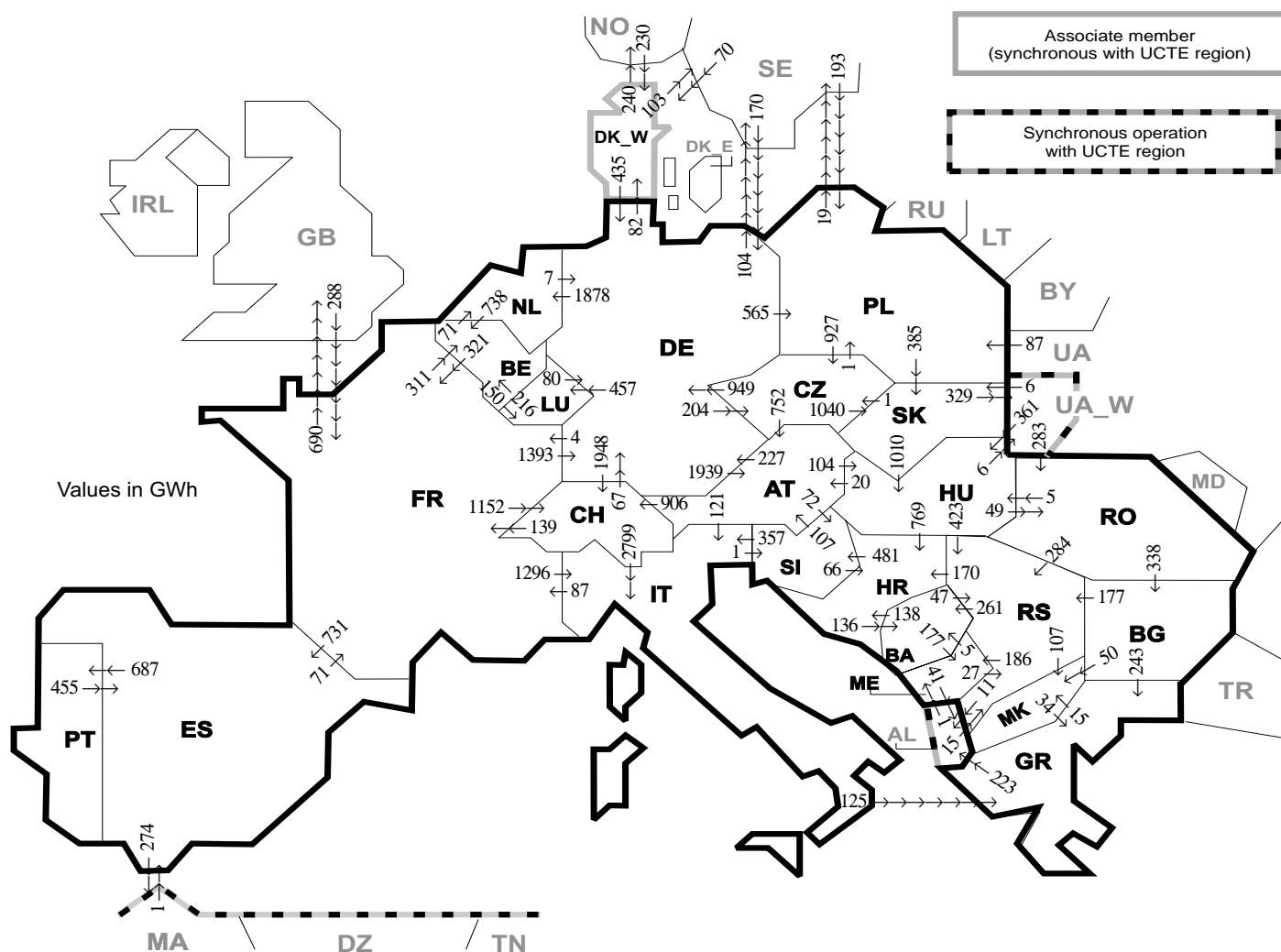
² The reported figures are best estimates based on actual measurements and extrapolations

³ Data on hydro, other renewable, not clearly identifiable production are not yet available

⁴ Including consumption values CS until December 2006

All representativities of the national production and consumption values used to calculate values at a representativity of 100% as stated in the table above

Countries	AT	BA	BE	BG	CH	CZ	DE	ES	FR	GR	HR	HU	IT	LU	ME	MK	NL	PL	PT	RO	RS	SI	SK	DK_W	UA_W	
Production																										
Therm.nuclear	100	100	100	100	100	100	100	100	100	100	100	100	100	100	100	100	100	100	100	100	100	100	100	100	100	100
Thermal conv.	100	100	100	100	100	100	100	97	100	100	100	100	100	100	100	100	100	100	95	100	100	100	100	100	100	100
Hydro prod	100	100	100	100	100	100	100	100	100	100	100	100	100	100	100	100	100	100	100	100	100	100	100	100	100	100
Other renew.	100	100	100	100	100	100	100	95	100	100	100	100	100	100	100	100	100	100	100	100	100	100	100	100	100	100
Not identify	100	100	100	100	100	100	100	100	100	100	100	100	100	100	100	100	100	100	100	100	100	100	100	100	100	100
Consumption	100	100	100	100	100	100	100	98	100	100	100	100	100	100	100	100	100	100	97	100	100	95	100	100	100	100



Exporting countries	AT	BA	BE	BG	CH	CZ	DE	ES	FR	GR	HR	HU	IT	LU	ME	MK	NL	PL	PT	RO	RS	SI	SK	DK_W	UA_W	Other III ¹	Sum export
AT	-	-	-	-	906	0	227	-	-	-	-	104	121	-	-	-	-	-	-	-	-	72	-	-	-	-	1430
BA	-	-	-	-	-	-	-	-	-	-	138	-	-	-	177	-	-	-	-	-	-	47	-	-	-	-	362
BE	-	-	-	-	-	-	-	-	321	-	-	-	-	150	-	-	71	-	-	-	-	-	-	-	-	-	542
BG	-	-	-	-	-	-	-	-	-	243	-	-	-	-	50	-	-	-	-	0	177	-	-	-	-	0	470
CH	0	-	-	-	-	67	-	139	-	-	-	2799	-	-	-	-	-	-	-	-	-	-	-	-	-	-	3005
CZ	752	-	-	-	-	-	949	-	-	-	-	-	-	-	-	-	-	1	-	-	-	-	1040	-	-	-	2742
DE	1939	-	-	-	1948	204	-	4	-	-	-	457	-	-	-	1878	565	-	-	-	-	-	-	82	-	104	7181
ES	-	-	-	-	-	-	-	71	-	-	-	-	-	-	-	-	-	-	687	-	-	-	-	-	-	274	1032
FR	-	-	311	-	1152	-	1393	731	-	-	-	-	1296	-	-	-	-	-	-	-	-	-	-	-	-	-	5573
GR	-	-	-	0	-	-	-	-	-	-	-	0	-	-	-	15	-	-	-	-	-	-	-	-	-	622	238
HR	-	136	-	-	-	-	-	-	-	-	-	0	-	-	-	-	-	-	-	-	0	481	-	-	-	-	617
HU	20	-	-	-	-	-	-	-	-	-	769	-	-	-	-	-	-	-	-	49	423	0	-	6	-	-	1267
IT	0	-	-	-	0	-	-	87	125	-	-	-	-	-	-	-	-	-	-	-	-	1	-	-	-	-	213
LU	-	-	216	-	-	-	80	-	-	-	-	-	-	-	-	-	-	-	-	-	-	-	-	-	-	-	296
ME	-	5	-	-	-	-	-	-	-	-	-	-	-	-	-	-	-	-	-	-	-	-	-	-	-	41	73
MK	-	-	-	0	-	-	-	-	-	34	-	-	-	-	-	-	-	-	-	-	-	27	-	-	-	-	73
NL	-	-	738	-	-	-	7	-	-	-	-	-	-	-	-	-	-	-	-	-	-	-	-	-	-	-	34
PL	-	-	-	-	927	0	-	-	-	-	-	-	-	-	-	-	-	-	-	-	-	-	385	-	-	-	745
PT	-	-	-	-	-	-	455	-	-	-	-	-	-	-	-	-	-	-	687	-	-	-	-	-	-	-	455
RO	-	-	-	338	-	-	-	-	-	-	-	5	-	-	-	-	-	-	-	-	-	284	-	-	0	0	627
RS	-	261	-	0	-	-	-	-	-	-	170	0	-	-	186	107	-	-	-	0	-	-	-	-	-	-	735
SI	107	-	-	-	-	-	-	-	-	-	66	357	-	-	-	-	-	-	-	-	-	-	-	-	-	-	530
SK	-	-	-	-	1	-	-	-	-	-	-	1010	-	-	-	-	-	-	-	-	-	-	-	-	329	-	1340
DK_W	-	-	-	-	-	435	-	-	-	-	-	-	-	-	-	-	-	-	-	-	-	-	-	-	-	343	778
UA_W	-	-	-	-	-	-	-	-	-	-	-	361	-	-	-	-	-	-	-	-	283	-	6	-	-	-	650
Other III ¹	-	-	-	0	-	-	170	1	288	0	-	-	-	-	1	-	-	280	-	0	15	-	-	300	-	-	1055
Sum imp	2818	402	1265	338	4006	1132	3328	1187	910	402	1143	1480	4573	607	364	172	1949	846	687	332	973	554	1431	382	335	1705	33321

Sum of physical energy flows between UCTE countries = 29059GWh Total physical energy flows = 33321GWh

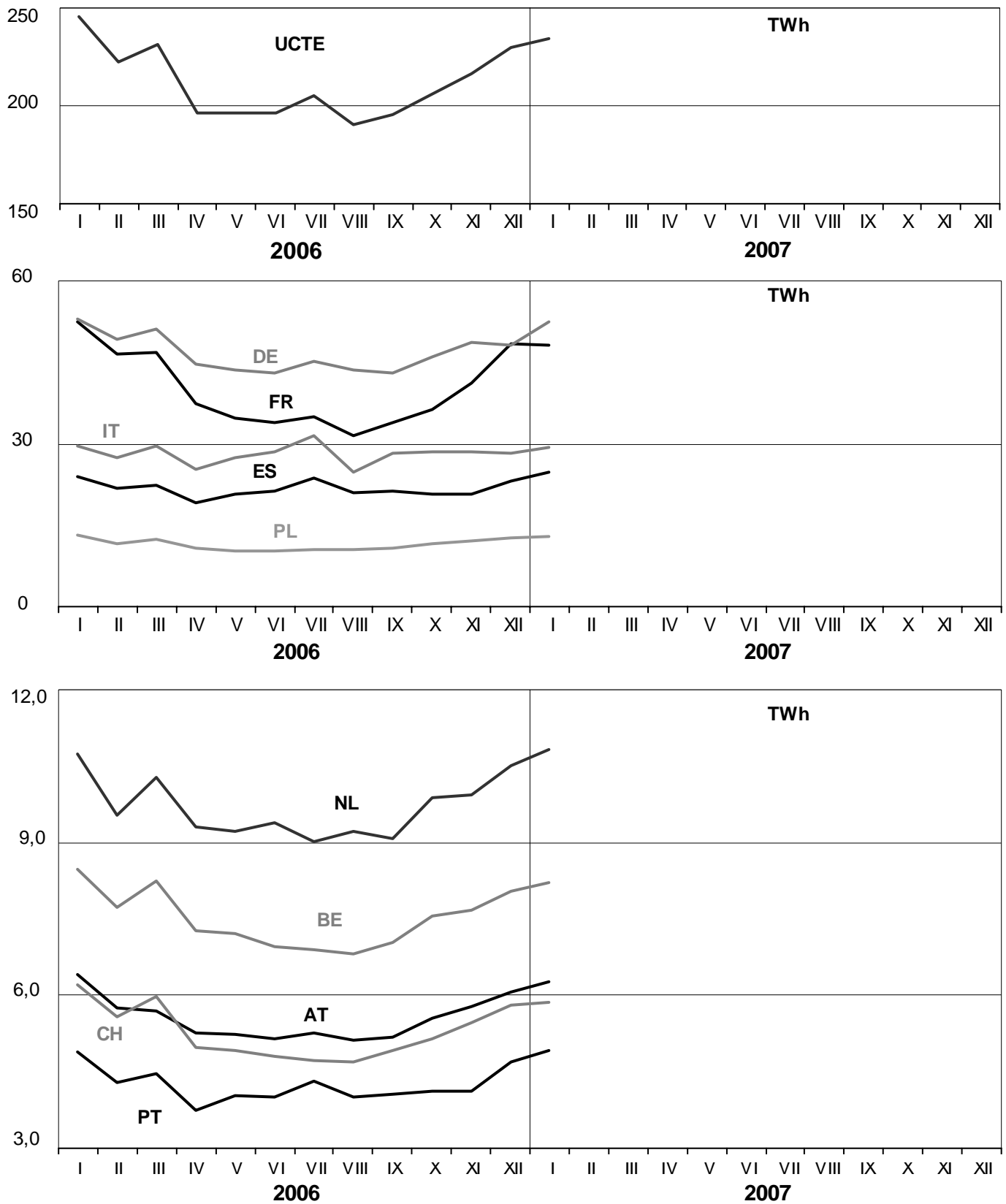
¹ Other III: Albania, Belarus, Denmark East, Great Britain, Morocco, Republic of Moldavia, Norway, Sweden, Republic of Turkey and Ukraine

These physical energy flows were measured on the cross-frontier transmission lines (≤ 110 kV) listed in table 9 of the Statistical Yearbook. These values may differ from the official statistics and the exchange balances in chapter 1.

3

Monthly consumption

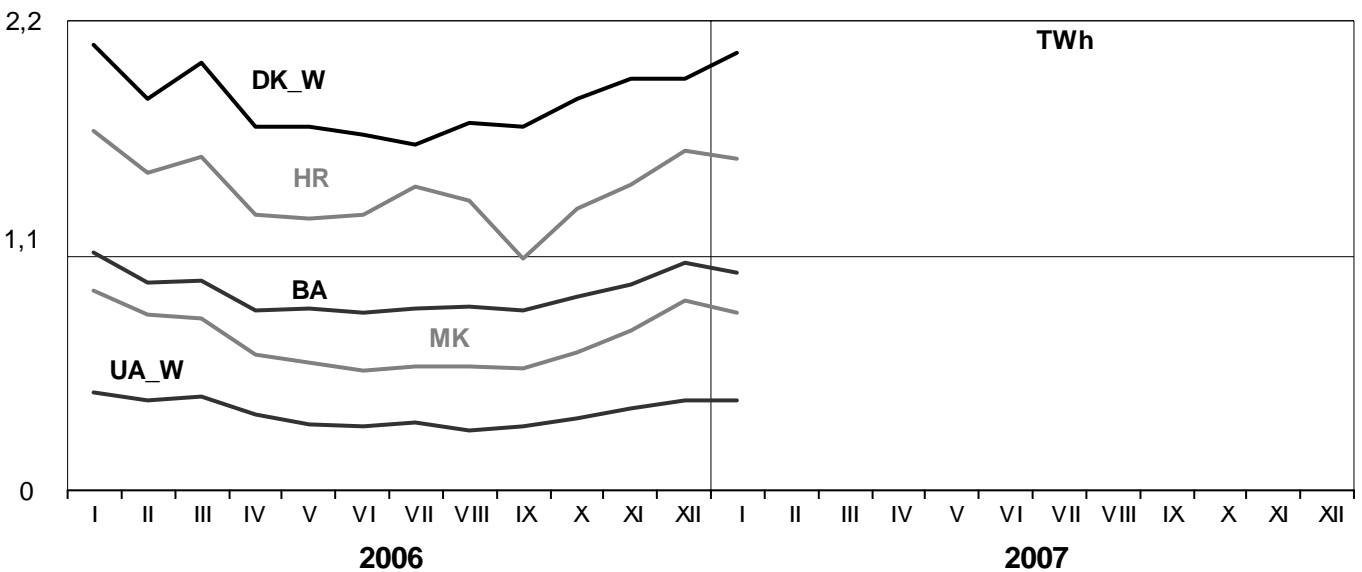
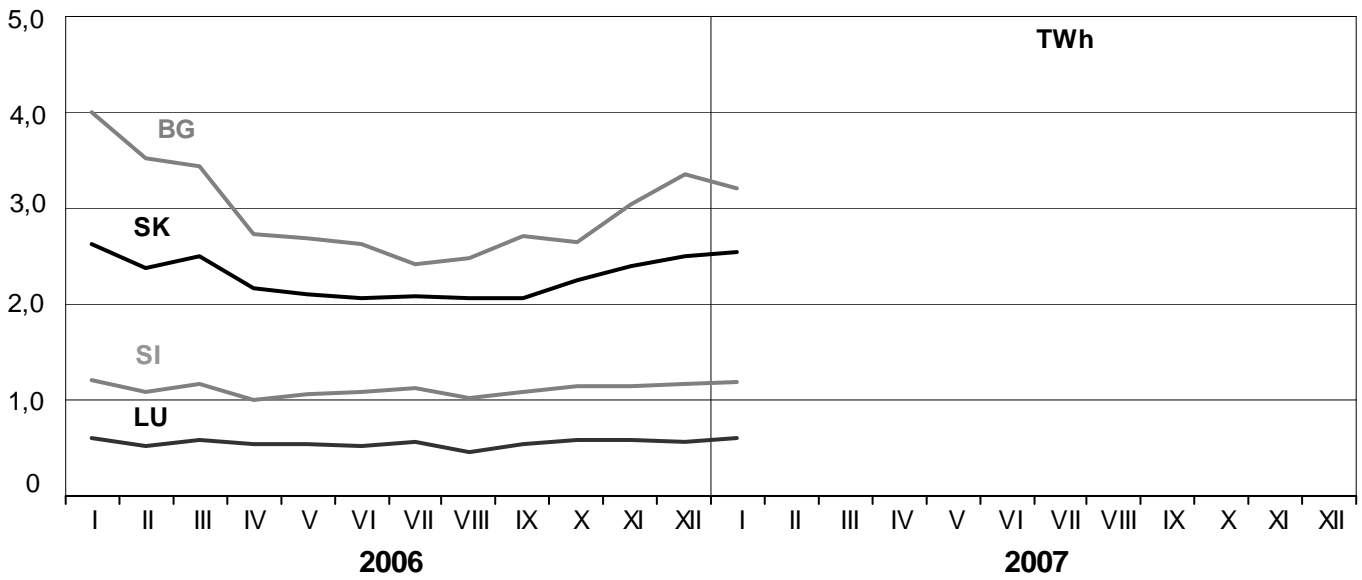
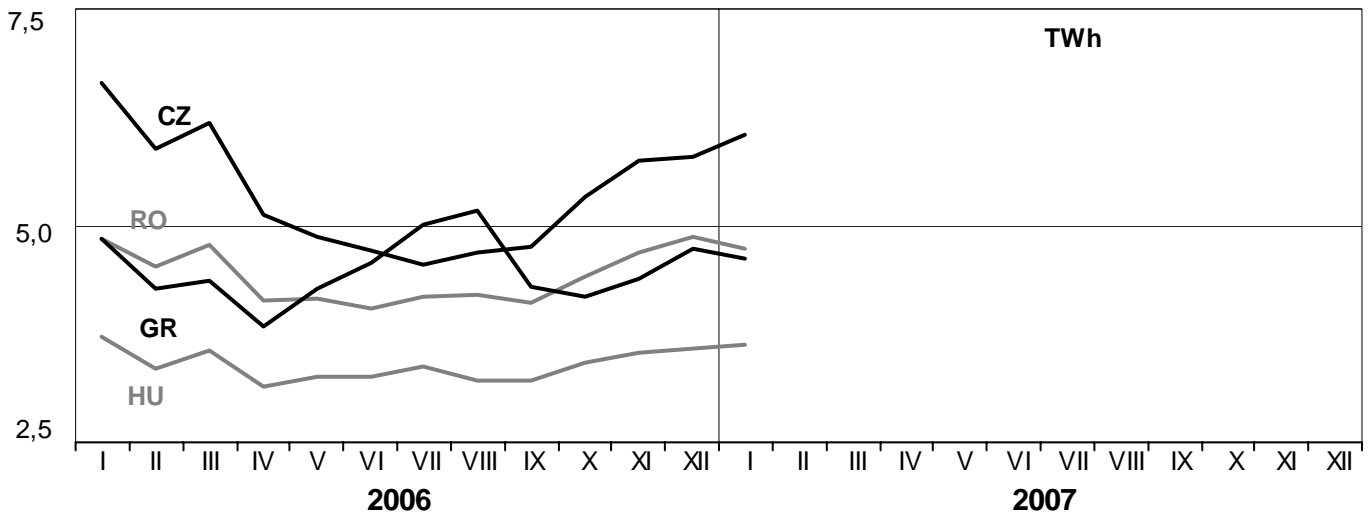
January 2007



3

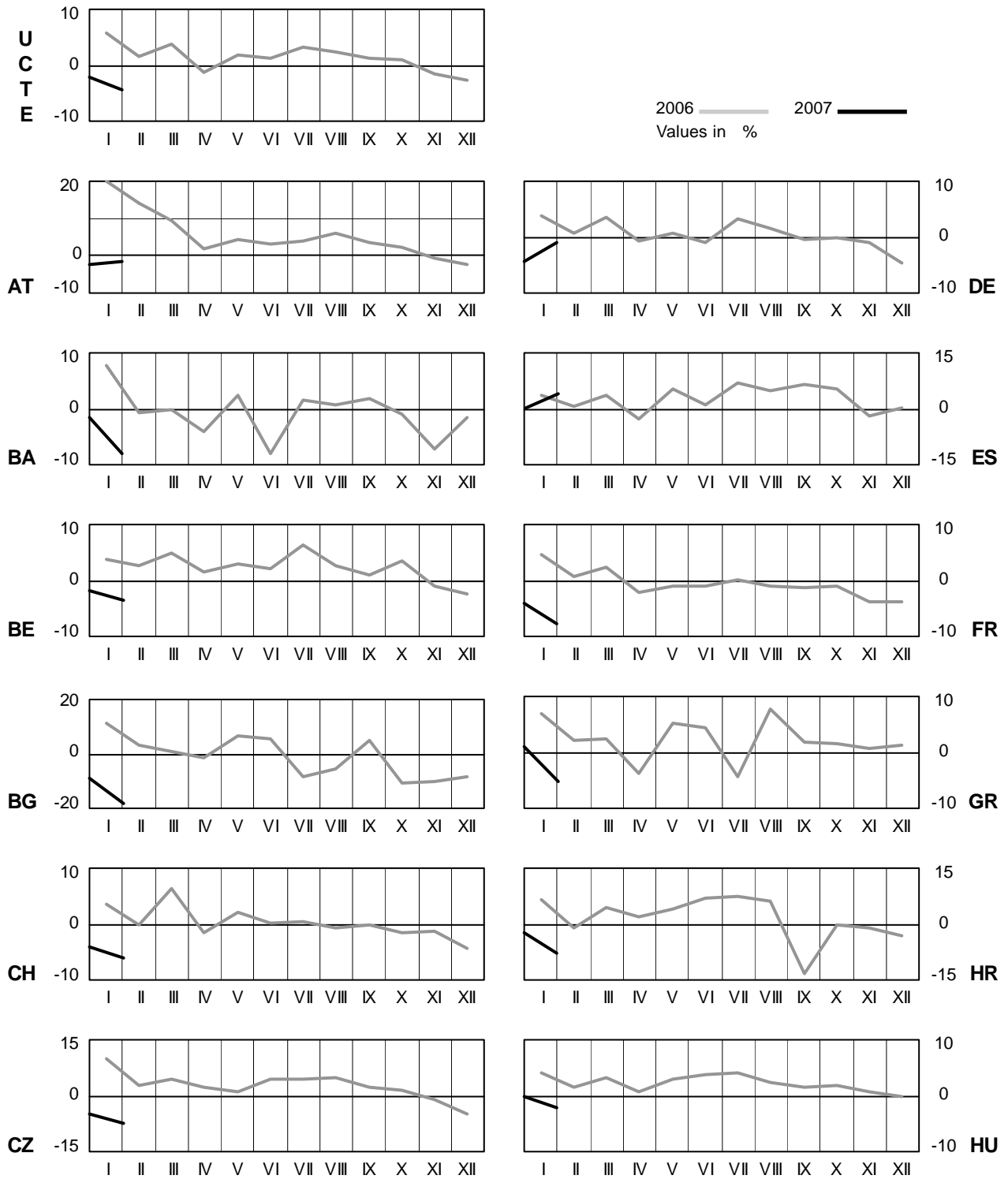
Monthly consumption

January 2007



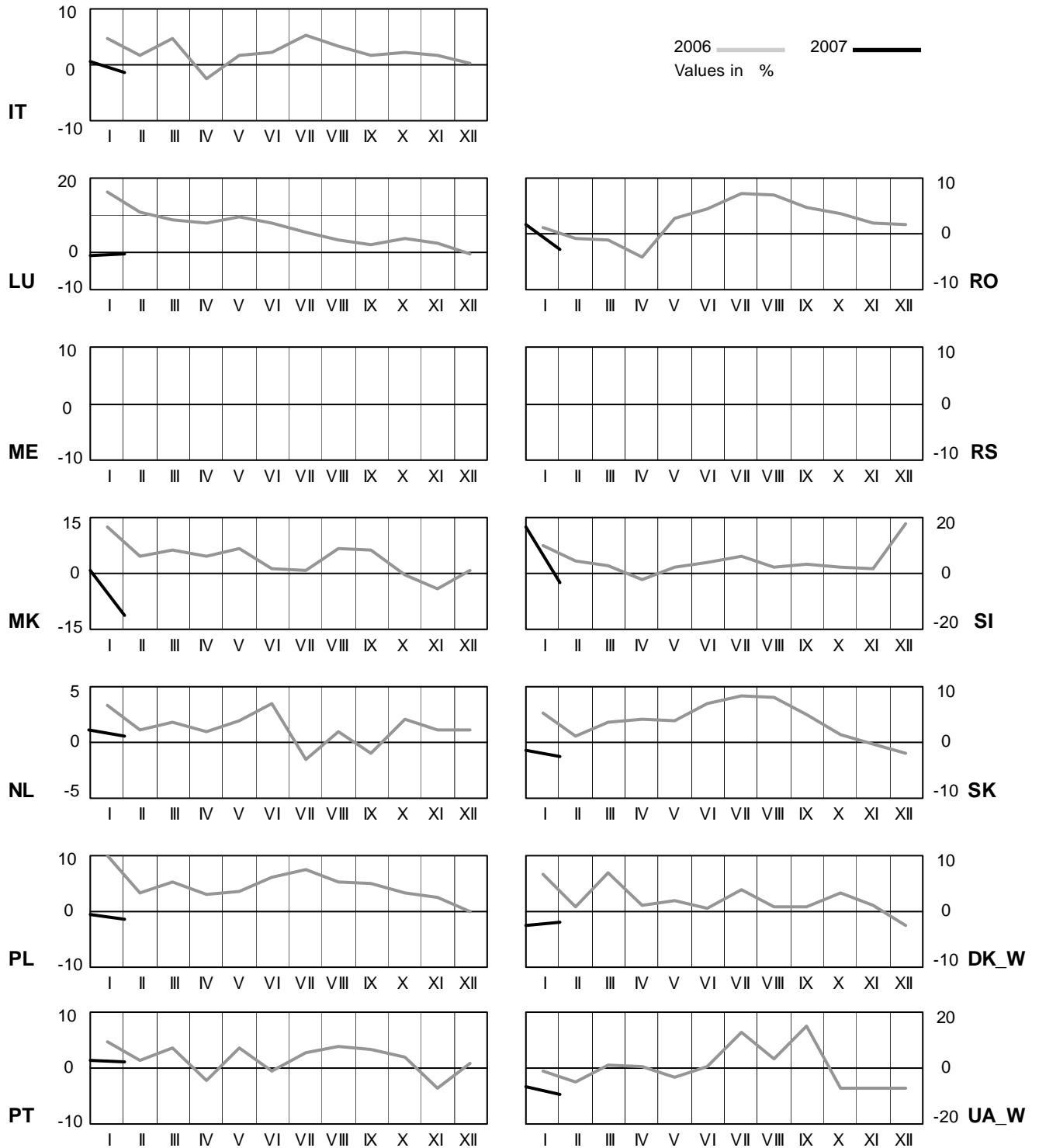
4 Monthly consumption variation

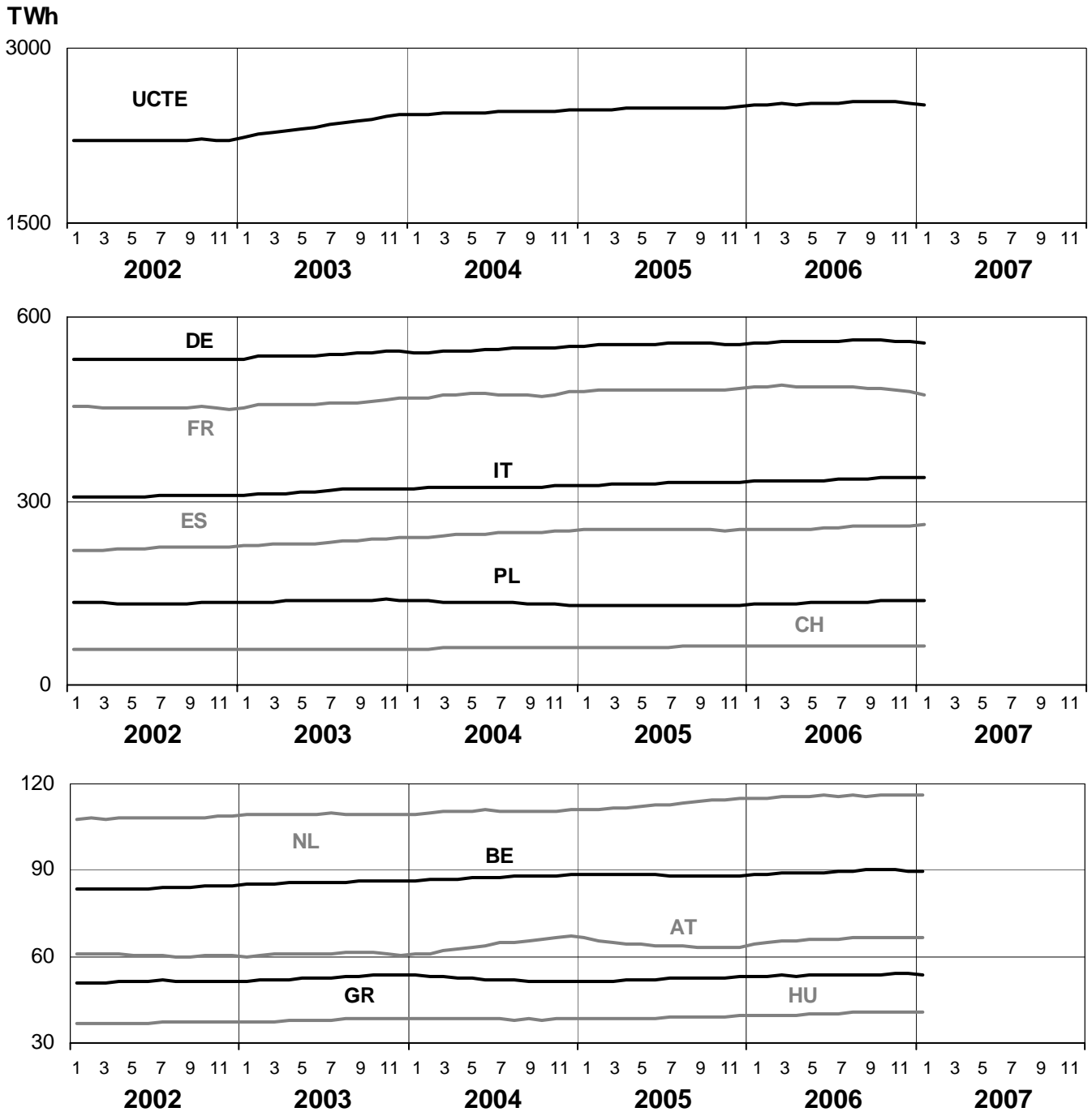
January 2007



4 Monthly consumption variation

January 2007

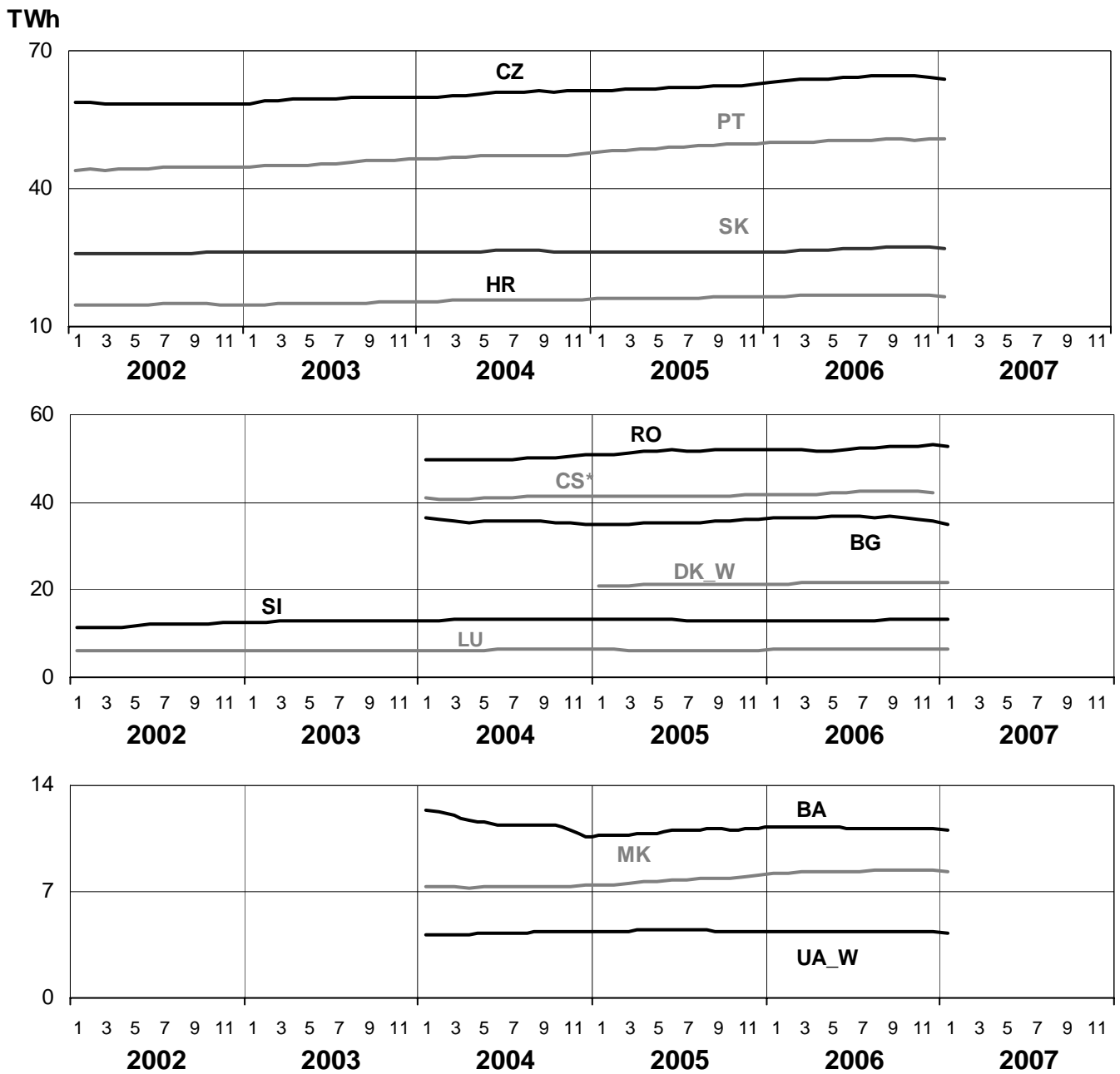




5

Consumption of the last 12 months

January 2007

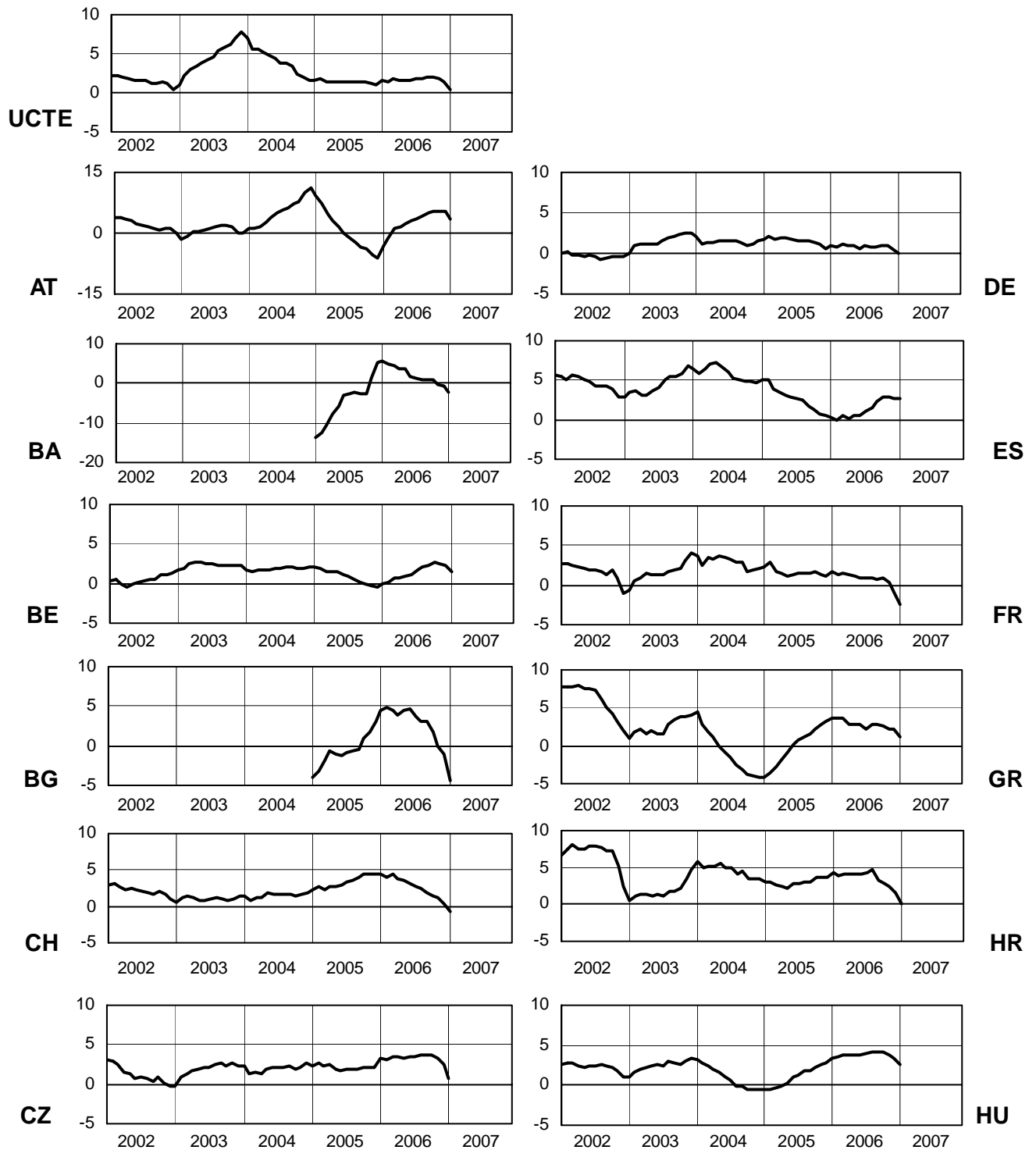


* CS consumption values until December 2006; from 2007 on ME and RS as separate countries

6

Variation of the last 12 months' consumption in %

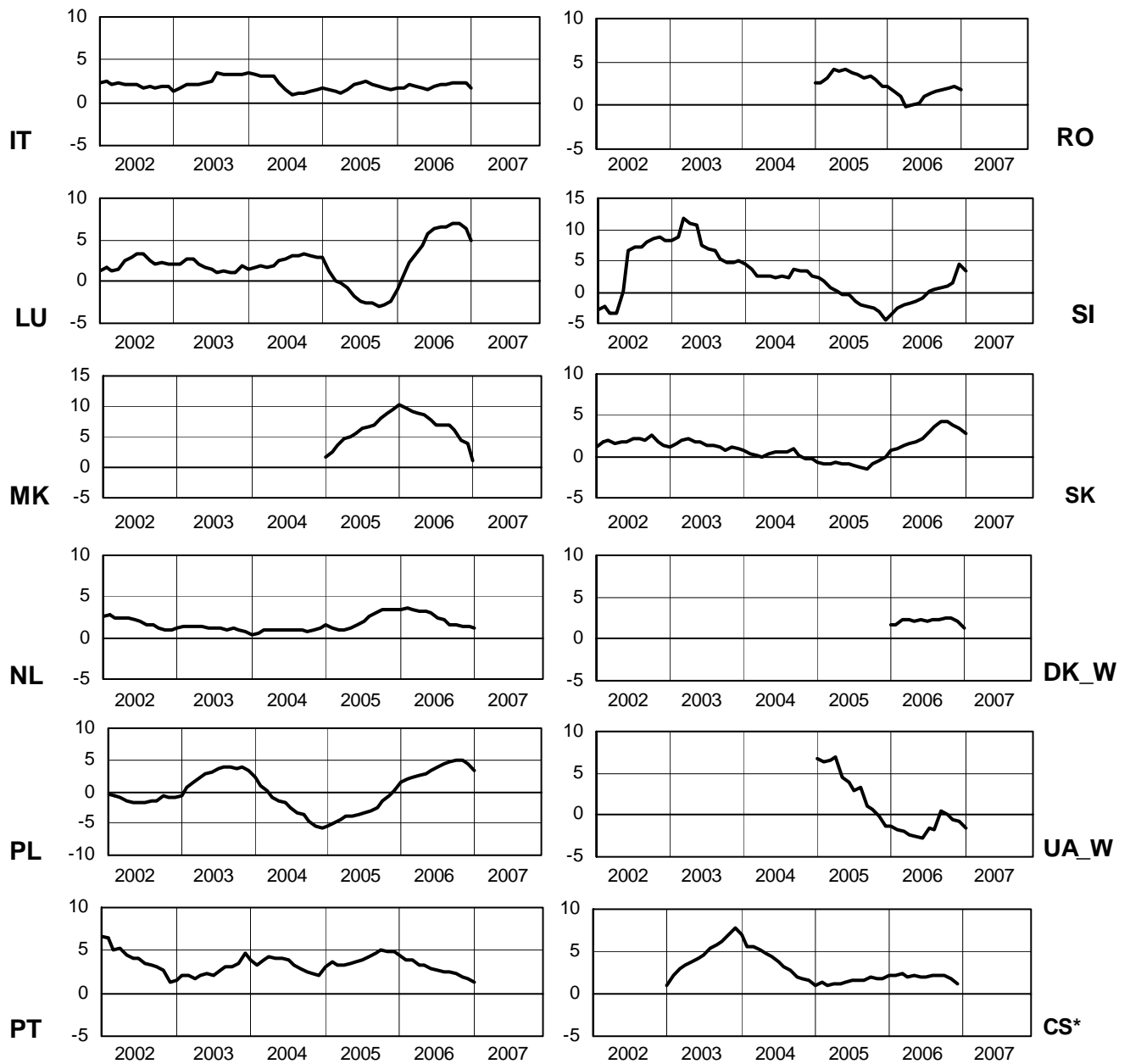
January 2007



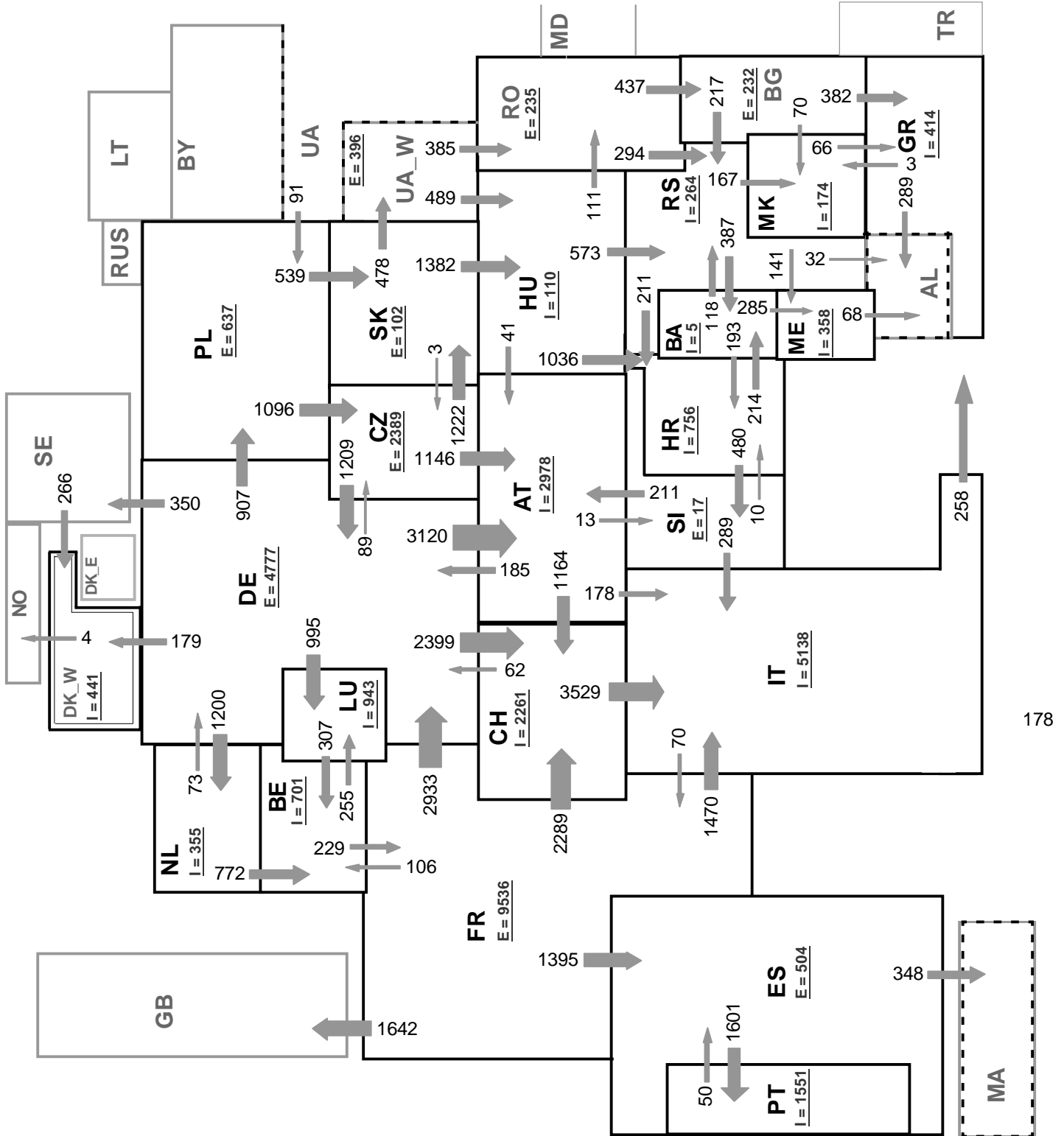
6

Variation of the last 12 months' consumption in %

January 2007



* CS consumption values until December 2006; from 2007 on ME and RS as separate countries



Associate member

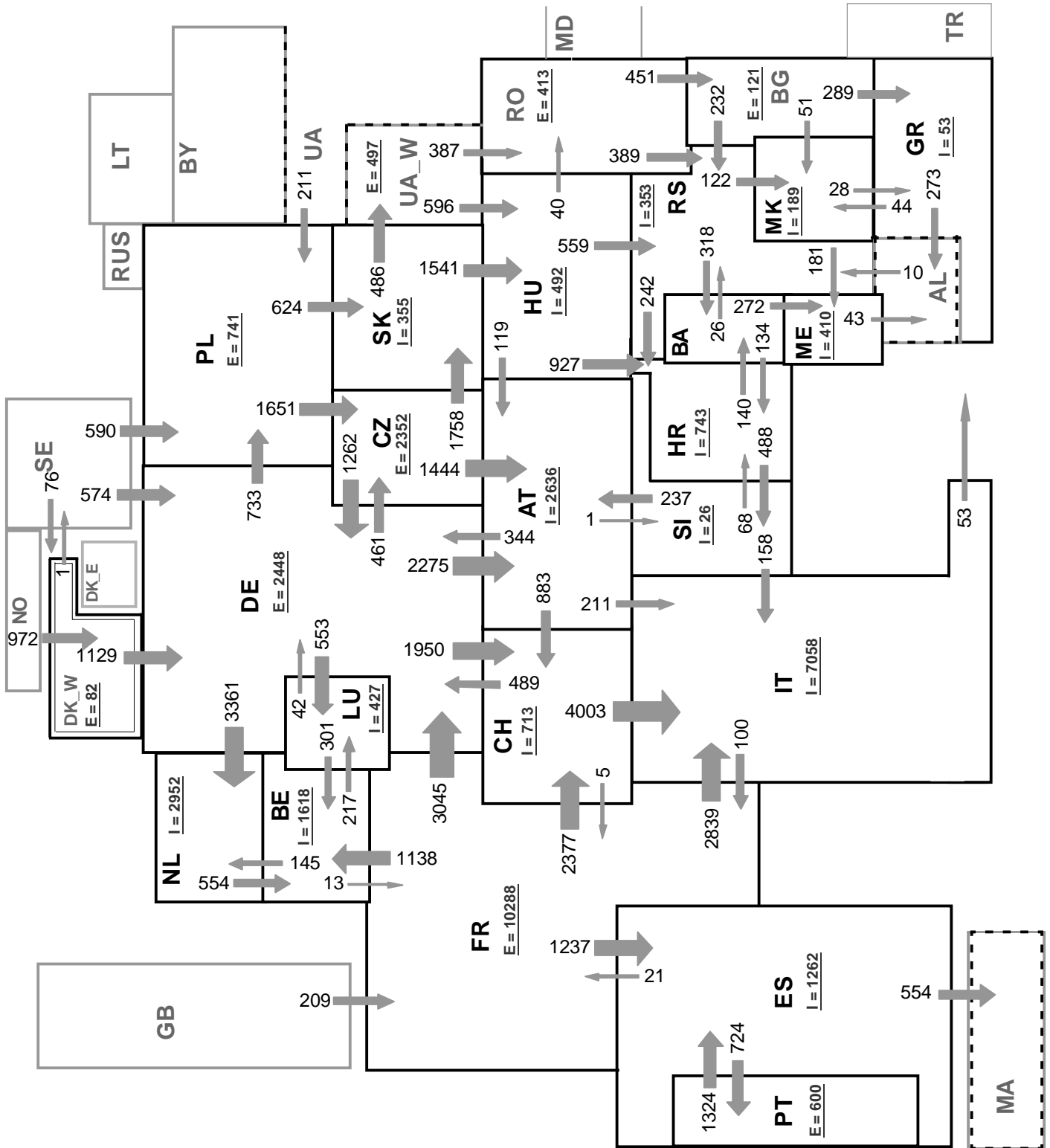
Synchronous operation with UCTE region

Sum of load flows in MW:

UCTE = 38182 MW

Total = 41929 MW

I = Import balance
E = Export balance



Associate member

Synchronous operation with UCTE region

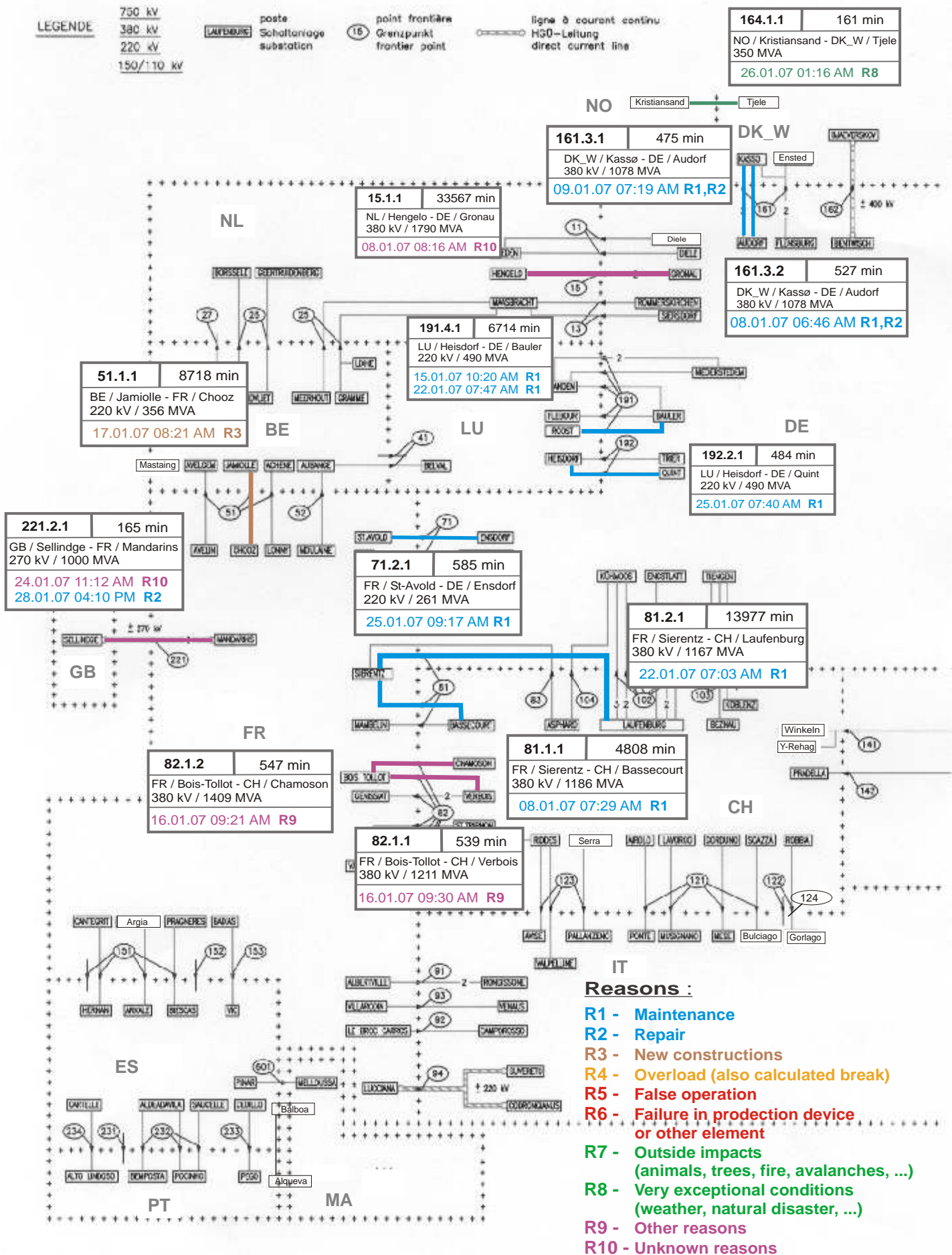
Sum of load flows in MW:

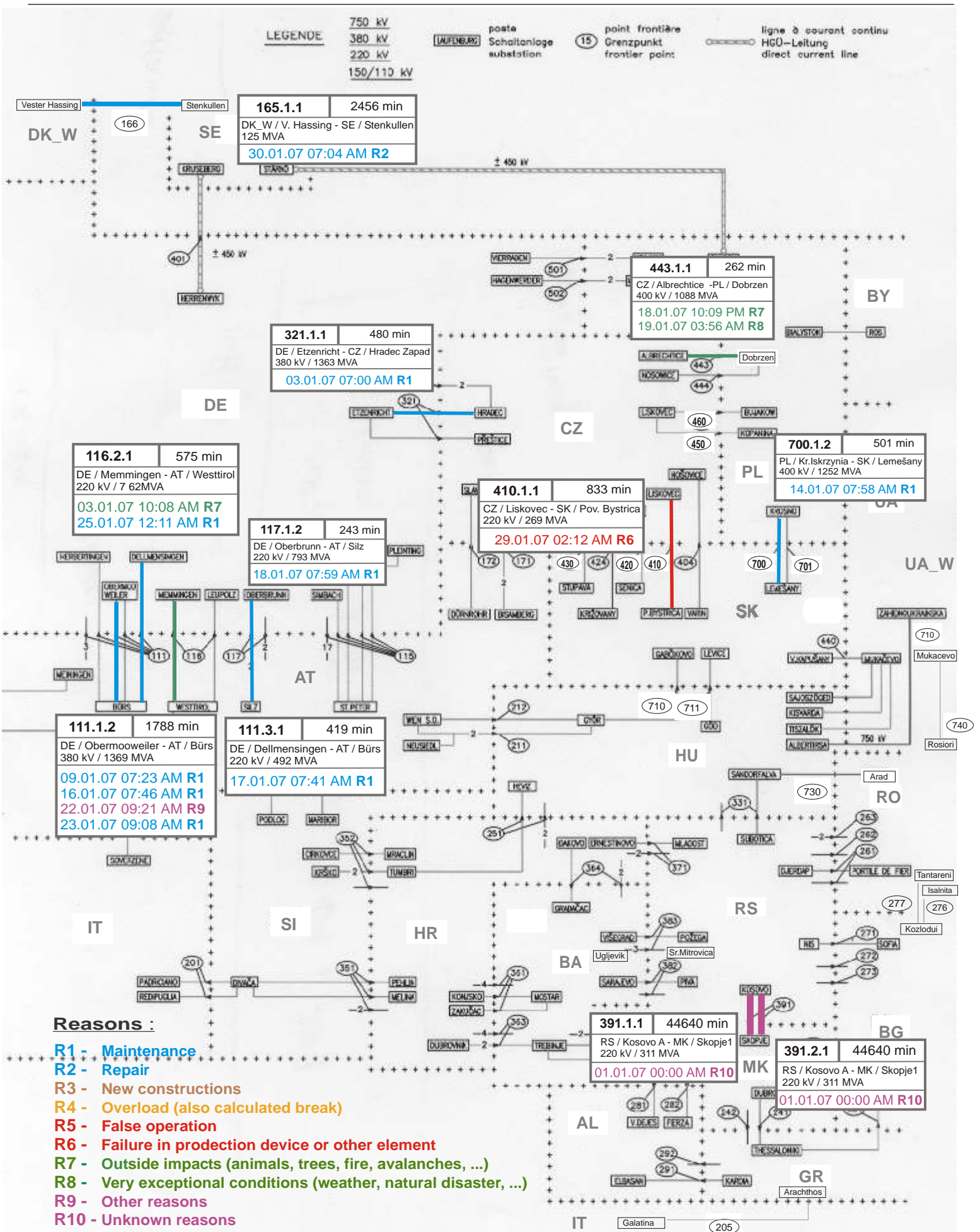
UCTE = 43194 MW

Total = 49305 MW

I = Import balance

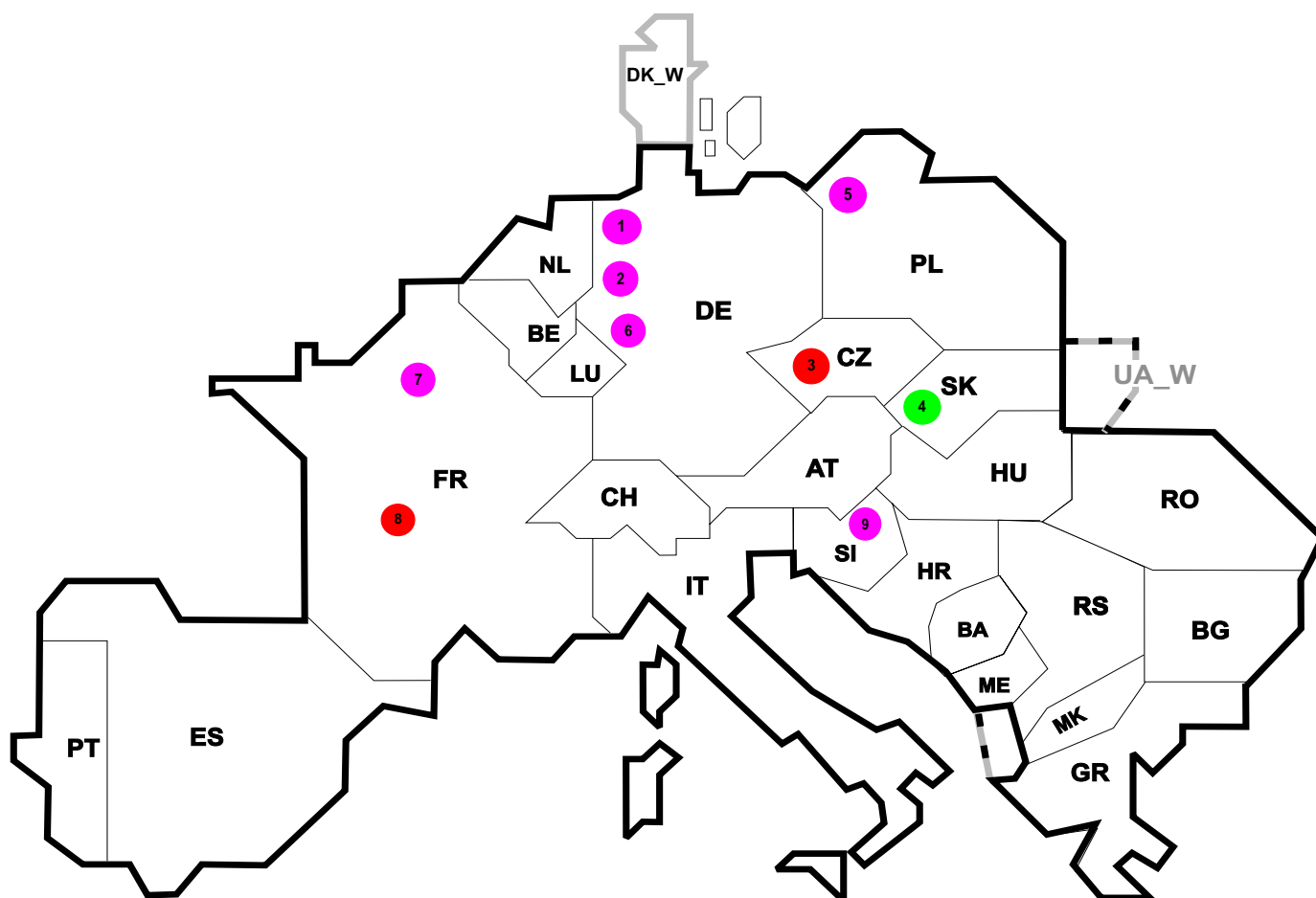
E = Export balance





Reasons :

- R1 - Maintenance
- R2 - Repair
- R3 - New constructions
- R4 - Overload (also calculated break)
- R5 - False operation
- R6 - Failure in protection device or other element
- R7 - Outside impacts (animals, trees, fire, avalanches, ...)
- R8 - Very exceptional conditions (weather, natural disaster, ...)
- R9 - Other reasons
- R10 - Unknown reasons



Reasons:

R4 Overload (also calculated break)

R5 False operation

R6 Failure in protection device or other element

R7 Outside impacts (animals, trees, fire, avalanches, ...)

(animals, trees, fire, avalanches, ...)

R8 Very exceptional conditions

(weather, natural disaster, ...)

R9 Other reasons

R10 Unknown reasons

No	Country	Substation	Reason	Energy not supplied ² [MWh]	Total loss of power [MW]	Restoration time [min]	Equivalent time of interruption ¹
1	DE	Hänelkenfähr	R9	6456	1300	298	6,07
2	DE	Gersteinwerk	R10	1082	580	112	1,02
3	CZ	Novice	R6	28	372	5	0,24
4	SK	Krizovany	R7	9	188	3	0,17
5	PL	Mbrzyczyn	R10	26	12	130	0,10
6	DE	Frimmersdorf	R9	37	130	17	0,03
7	FR	Buttes Chaumont	R9	6	30	12	0,01
8	FR	Port Jerome	R5	4	4	52	0,00
9	SI	Bericevo	R10	0	0	111	0,00

¹ (year [in min] * energy not supply) / consumption last 12 months

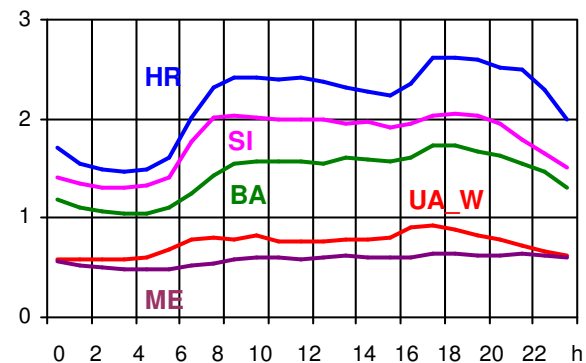
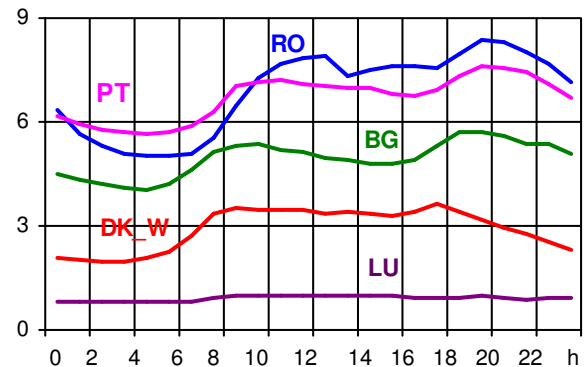
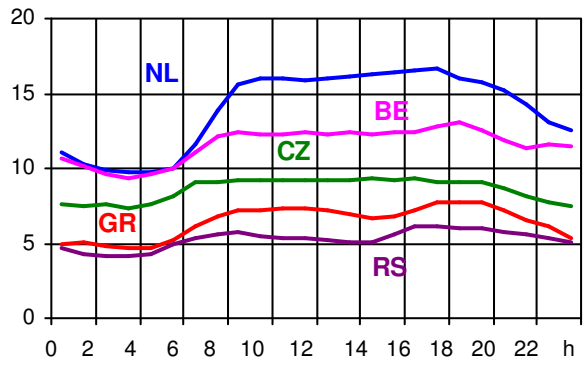
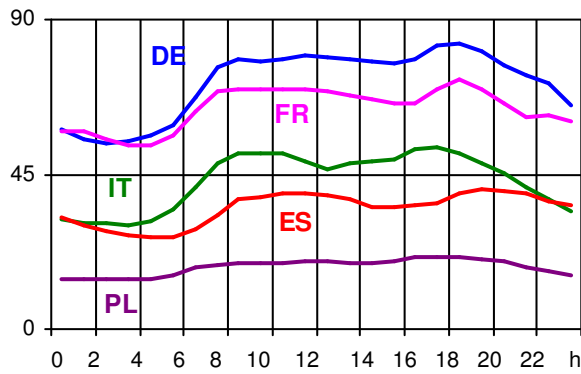
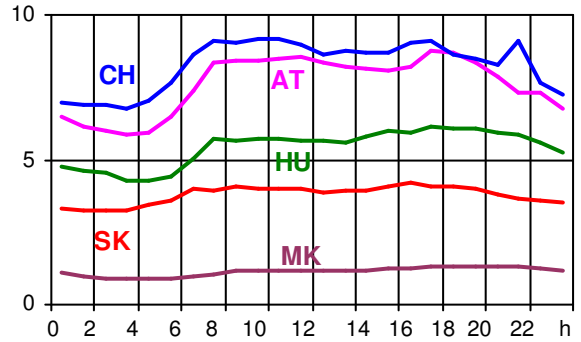
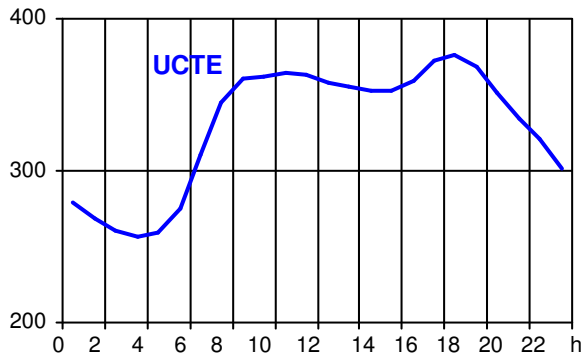
² Energy Not Supplied only related to the transmission grid, not including supply interruptions in lower voltage levels. A report with a detailed description of the events on 4 November 2006 to be found on www.ucte.org.

Control area	Export Programs	Import Programs	Export Programs at 03:00	Import Programs at 03:00	Export Programs at 11:00	Import Programs at 11:00
AT	780176	974169	1281	842	1578	1357
BA	127174	175336	141	205	166	210
BE	385768	1041189	0	651	1257	2800
BG	n.a.	n.a.	n.a.	n.a.	n.a.	n.a.
CH	2277055	3279818	2356	4617	3890	4587
CZ	2229715	569309	2934	435	3398	978
DE	4638429	1326255	4799	2611	5664	2709
ES	118606	1273864	1955	1400	1351	2499
FR	7473178	2757773	11840	2306	12239	1878
GR	55985	218131	45	425	40	60
HR	259871	785870	122	629	104	657
HU	1155119	1368665	1730	1832	1503	2003
IT	212610	4573312	328	5466	153	7211
ME	122864	414604	187	563	139	545
MK	0	285	40	185	0	193
NL	487819	1687258	1547	1890	71	3058
PL	674530	305050	572	112	1400	805
PT	508857	759330	0	1600	1299	704
RO	375768	82769	465	218	560	143
RS	n.a.	n.a.	n.a.	n.a.	n.a.	n.a.
SI	525316	542427	684	660	780	797
SK	906081	923693	1283	1113	1288	1537
DK_W	363111	743713	244	0	985	1080
UA_W	308627	0	395	0	494	0

- Control areas can differ from national borders (i.e. German block which includes parts of AT, LU and DK).
- Values are calculated on an hourly base (MWh).
- This values are not the provisional values entered in the VULCANUS system, but the definitive values after an eventual correction during the actual date.
- Export Programs: Sum of all positive values of every hour of every border
- Import Programs: Sum of all negative values of every hour of every border
- Export Programs at 03:00: Sum of all positive values the third Wednesday from 02:00 to 03:00 a.m.
- Import Programs at 03:00: Sum of all negative values the third Wednesday from 02:00 to 03:00 a.m.
- Export Programs at 11:00: Sum of all positive values the third Wednesday from 10:00 to 11:00 a.m.
- Import Programs at 11:00: Sum of all negative values the third Wednesday from 10:00 to 11:00 a.m.

Consumption hourly load curves on 17.01.2007 CET

Values in GW



	Highest load MW	var.% ¹	Load representativity %
AT	8733	-3,4	100
BA	1736	-3,1	100
BE ²	13012	-1,5	100
BG	5732	-7,7	100
CH	9181	-8,6	100
CZ	9332	-7,6	100
DE	82788	3,0	91
ES	40478	4,3	98
FR	72668	-4,7	100
GR	7796	-3,2	100
HR	2621	-5,8	100
HU	6105	-2,6	100
IT	52602	-2,3	100
LU	991	2,0	100
ME	644	-	100
MK	1320	-13,4	100
NL	16673	0,2	100
PL	21169	-2,6	100
PT	8373	-1,4	97
RO	7619	-2,0	100
RS	6094	-	100
SI	2049	-3,7	95
SK	4189	-2,9	100
UCTE	376585	-1,6	
DK_W	3612	-1,1	100
UA_W	917	-5,4	100

¹ Variation as compared to corresponding month of the previous year

² The reported figures are best estimates based on actual measurements and extrapolations.



Contact

Boulevard Saint-Michel, 15
B-1040 Brussels – Belgium
Tel +32 2 741 69 40 – Fax +32 2 741 69 49

info@ucte.org
www.ucte.org