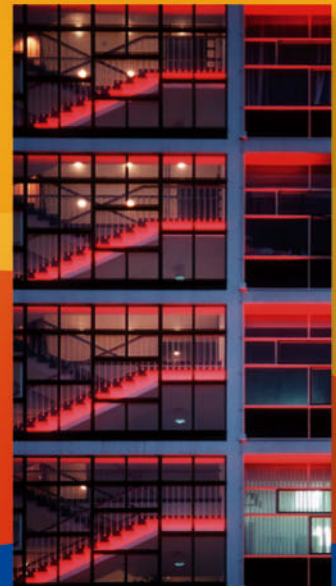
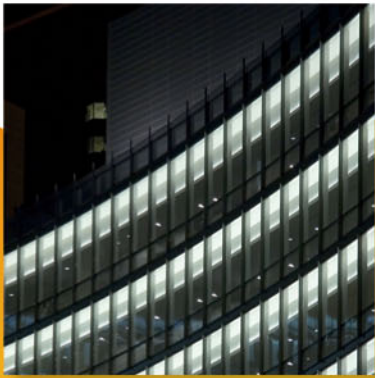


UCTE



January 2006

Monthly provisional values
union for the co-ordination of transmission of electricity

Table of contents		Page
1	Electricity supply situation of the countries	2
2	Physical energy flows	3
3	Monthly consumption	4
4	Monthly consumption variation	6
5	Consumption of the last 12 months	8
6	Variation of the last 12 months' consumption	10
7	Load flows (night)	12
8	Load flows (day)	13
9	Unavailability of international tie lines (major events)	14
10	Network reliability (major events)	16
11	Scheduled exchanges	17
12	Load on the 3 rd Wednesday	18

General remarks and abbreviations used in the tables

- All values of production and consumption in chapter 1, 3&4, 5&6 and 12 are calculated to represent 100% of the national values.
- DK_W Denmark West represents the Western part of Denmark synchronously interconnected with UCTE (Jutland and Funen).
- UA_W Ukraine West represents the so-called Burshtyn Island synchronously interconnected with UCTE.
- CET Central European Time

Countries	Net production in GWh							Exchange balance in GWh	Pump in GWh	Consumption in GWh			
	Therm. nuclear	Fossil fuel	Hydro prod	Other renew.	Of which wind	Not identify	Total			monthly	var. [%]	last 12 months	var. [%]
AT	0	3027	1882	0	0	341	5250 ¹	1443	286	6407	20,0	64242	-3,3
BA	0	666	799	0	0	0	1465	-347	0	1118	7,8	11272	5,7
BE ²	4147	3156	139	207	18	0	7649 ¹	876	143	8382	4,1	87202	-1,1
BG	2178	2086	584	0	0	0	4848	-808	41	3999	11,6	36498	4,4
CH	2424	216	1974	91	1	0	4705 ¹	1717	204	6218	3,7	63266	4,4
CS	0	2826	1458	0	0	0	4284 ¹	371	61	4594	7,3	41943	1,7
CZ	1985	5266	248	10	3	0	7509 ¹	-764	97	6648	10,0	63272	3,1
DE ³	15225	35474	1644	4481	3677	0	56824 ¹	-3429	775	52620	3,3	558064	1,0
ES	5446	15465	1933	2120	1574	0	24964 ¹	-380	611	23973	2,2	251415	-0,5
FR	42768	8356	4228	454	136	0	55806	-2782	758	52266	6,4	485564	1,6
GR	0	3644	939	112	103	0	4695 ¹	192	34	4853	6,8	53184	3,7
HR	0	479	793	2	1	0	1274 ¹	427	19	1682	6,7	16663	4,3
HU ⁴	1303	1831	0	0	0	0	3134 ¹	579	0	3713	6,1	39526	3,4
IT	0	24128	3179	668	219	0	27975 ¹	2136	818	29293	4,9	330462	1,4
LU	0	303	77	9	4	0	389	318	100	607	15,2	6317	-0,7
MK	0	514	203	0	0	0	717 ¹	219	0	936	12,4	8177	10,3
NL	336	8150	0	587	190	0	9073 ¹	1661	0	10734	3,4	115006	3,4
PL	0	14558	266	18	12	0	14842 ¹	-1317	211	13314	9,9	131811	1,5
PT	0	3184	722	353	186	0	4259 ¹	704	47	4916	5,4	50124	4,5
RO	486	3451	1432	0	0	0	5369 ¹	-508	4	4857	1,1	51940	2,1
SI	483	469	146	0	0	0	1098	119	0	1217	9,7	12875	-3,3
SK	1679	730	270	1	1	252	2932 ¹	-285	24	2623	5,2	26412	0,8
UCTE	78460	137979	22916	9113	6125	593	249061¹	142	4233	244970	5,5	2505235	1,4
DK_W	0	2095	2	551	410	1	2649 ¹	-563	0	2086	6,6	21425	1,7
UA_W	0	805	6	0	0	0	811 ¹	-348	0	463	-1,3	4356	-1,3

¹ Including deliveries from industry

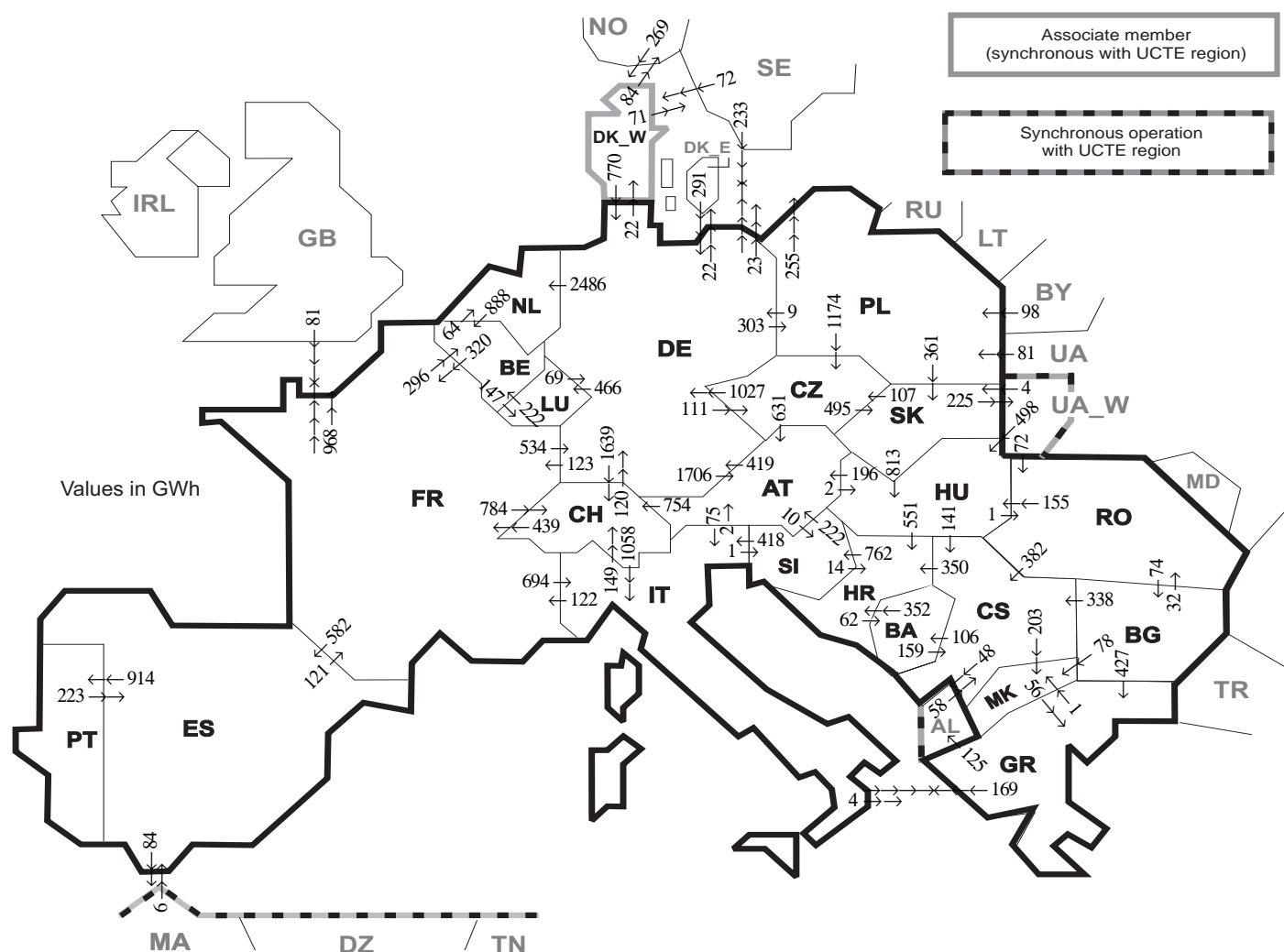
² The reported figures are best estimates based on actual measurements and extrapolations

³ Calculated values

⁴ Data on hydro, other renewable, not clearly identifiable production are not yet available

All representativities of the national production and consumption values used to calculate values at a representativity of 100% as stated in the table above

Countries	AT	BA	BE	BG	CH	CS	CZ	DE	ES	FR	GR	HR	HU	IT	LU	MK	NL	PL	PT	RO	SI	SK	DK_W	UA_W
Production																								
Therm.nuclear	100	100	100	100	100	100	100	100	100	100	100	100	100	100	100	100	100	100	100	100	100	100	100	100
Fossil fuel	100	100	100	100	100	100	100	100	97	100	100	100	100	100	100	100	100	100	94	100	100	100	100	100
Hydro prod	100	100	100	100	100	100	100	100	100	100	100	100	100	100	100	100	100	100	100	100	100	100	100	100
Other renew.	100	100	100	100	100	100	100	100	95	100	100	100	100	100	100	100	100	100	100	100	100	100	100	100
Not identify	100	100	100	100	100	100	100	100	100	100	100	100	100	100	100	100	100	100	100	100	100	100	100	100
Consumption	100	100	100	100	100	100	100	100	98	100	100	100	100	100	100	100	100	100	96	100	95	100	100	100



Exporting countries	Importing countries																				Sum export						
	AT	BA	BE	BG	CH	CS	CZ	DE	ES	FR	GR	HR	HU	IT	LU	MK	NL	PL	PT	RO		SI	SK	DK_W	UA_W	Other III ¹	
AT	-	-	-	-	754	-	0	419	-	-	-	2	75	-	-	-	-	-	-	-	10	-	-	-	-	-	1260
BA	-	-	-	-	-	159	-	-	-	-	-	352	-	-	-	-	-	-	-	-	-	-	-	-	-	-	511
BE	-	-	-	-	-	-	-	-	-	320	-	-	-	-	147	-	64	-	-	-	-	-	-	-	-	-	531
BG	-	-	-	-	-	338	-	-	-	-	427	-	-	-	-	78	-	-	-	-	32	-	-	-	-	0	875
CH	0	-	-	-	-	-	120	-	439	-	-	-	1058	-	-	-	-	-	-	-	-	-	-	-	-	1617	
CS	-	106	-	0	-	-	-	-	-	-	-	350	0	-	203	-	-	-	-	0	-	-	-	-	-	48	707
CZ	631	-	-	-	-	-	-	1027	-	-	-	-	-	-	-	-	-	0	-	-	-	495	-	-	-	2153	
DE	1706	-	-	-	1639	-	111	-	123	-	123	-	-	466	-	2486	303	-	-	-	-	22	22	-	45	6901	
ES	-	-	-	-	-	-	-	-	121	-	121	-	-	-	-	-	-	-	914	-	-	-	-	-	-	84	1119
FR	-	-	296	-	784	-	-	534	582	-	-	-	694	-	-	1	-	-	-	-	-	-	-	-	-	968	3858
GR	-	-	-	0	-	-	-	-	-	-	-	-	169	-	-	1	-	-	-	-	-	-	-	-	-	125	295
HR	-	62	-	-	-	0	-	-	-	-	-	-	0	-	-	-	-	-	-	-	762	-	-	-	-	824	
HU	196	-	-	-	-	141	-	-	-	-	-	551	-	-	-	-	-	-	-	-	1	0	-	0	-	889	
IT	2	-	-	-	149	-	-	-	-	122	4	-	-	-	-	-	-	-	-	-	-	1	-	-	-	278	
LU	-	-	222	-	-	-	-	69	-	-	-	-	-	-	-	-	-	-	-	-	-	-	-	-	-	291	
MK	-	-	-	0	-	0	-	-	-	-	56	-	-	-	-	-	-	-	-	-	-	-	-	-	-	56	
NL	-	-	888	-	-	-	-	0	-	-	-	-	-	-	-	-	-	-	-	-	-	-	-	-	-	888	
PL	-	-	-	-	-	-	1174	9	-	-	-	-	-	-	-	-	-	-	-	-	-	-	-	-	255	1799	
PT	-	-	-	-	-	-	-	-	223	-	-	-	-	-	-	-	-	-	-	-	-	-	-	-	-	223	
RO	-	-	-	74	-	382	-	-	-	-	-	-	155	-	-	-	-	-	-	-	-	-	-	0	0	611	
SI	222	-	-	-	-	-	-	-	-	-	-	14	-	418	-	-	-	-	-	-	-	-	-	-	-	654	
SK	-	-	-	-	-	-	107	-	-	-	-	-	813	-	-	-	-	0	-	-	-	-	-	225	-	1145	
DK_W	-	-	-	-	-	-	-	770	-	-	-	-	-	-	-	-	-	-	-	-	-	-	-	-	-	925	
UA_W	-	-	-	-	-	-	-	-	-	-	-	498	-	-	-	-	-	-	-	-	72	4	-	-	-	574	
Other III ¹	-	-	-	0	58	-	524	6	81	0	-	-	-	-	-	-	-	179	-	0	-	-	341	-	-	1189	
Sum imp	2757	168	1406	74	3326	1078	1392	3472	811	1206	487	1267	1468	2414	613	282	2550	482	914	105	773	860	363	225	1680	30173	

Sum of physical energy flows between UCTE countries = 25713GWh Total physical energy flows = 30173GWh

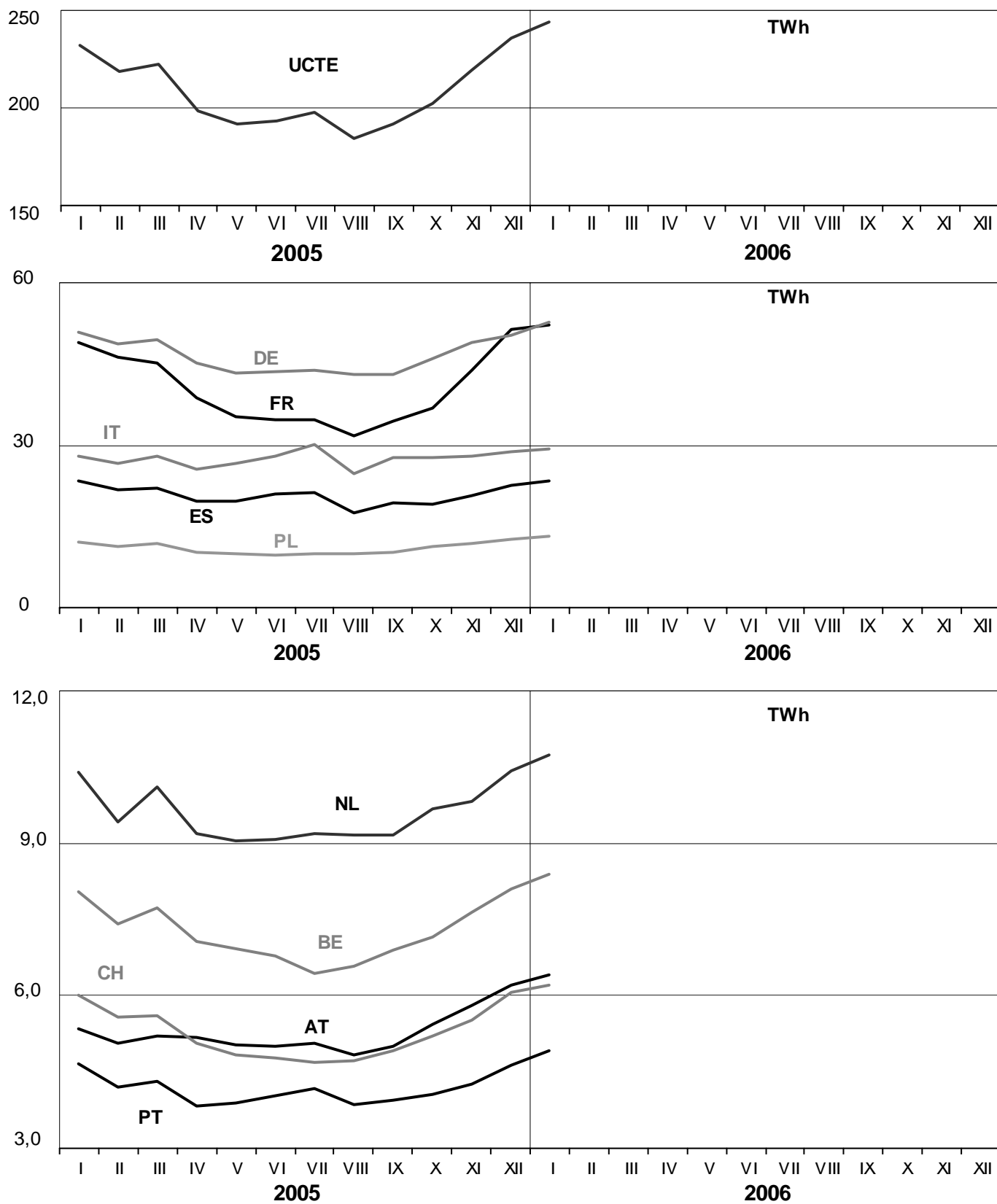
¹ Other III: Albania, Belarus, Denmark East, Great Britain, Morocco, Republic of Moldavia, Norway, Sweden, Republic of Turkey and Ukraina

These physical energy flows were measured on the cross-frontier transmission lines (≤ 110 kV) listed in table 9 of the Statistical Yearbook. These values may differ from the official statistics and the exchange balances in chapter 1.

3

Monthly consumption

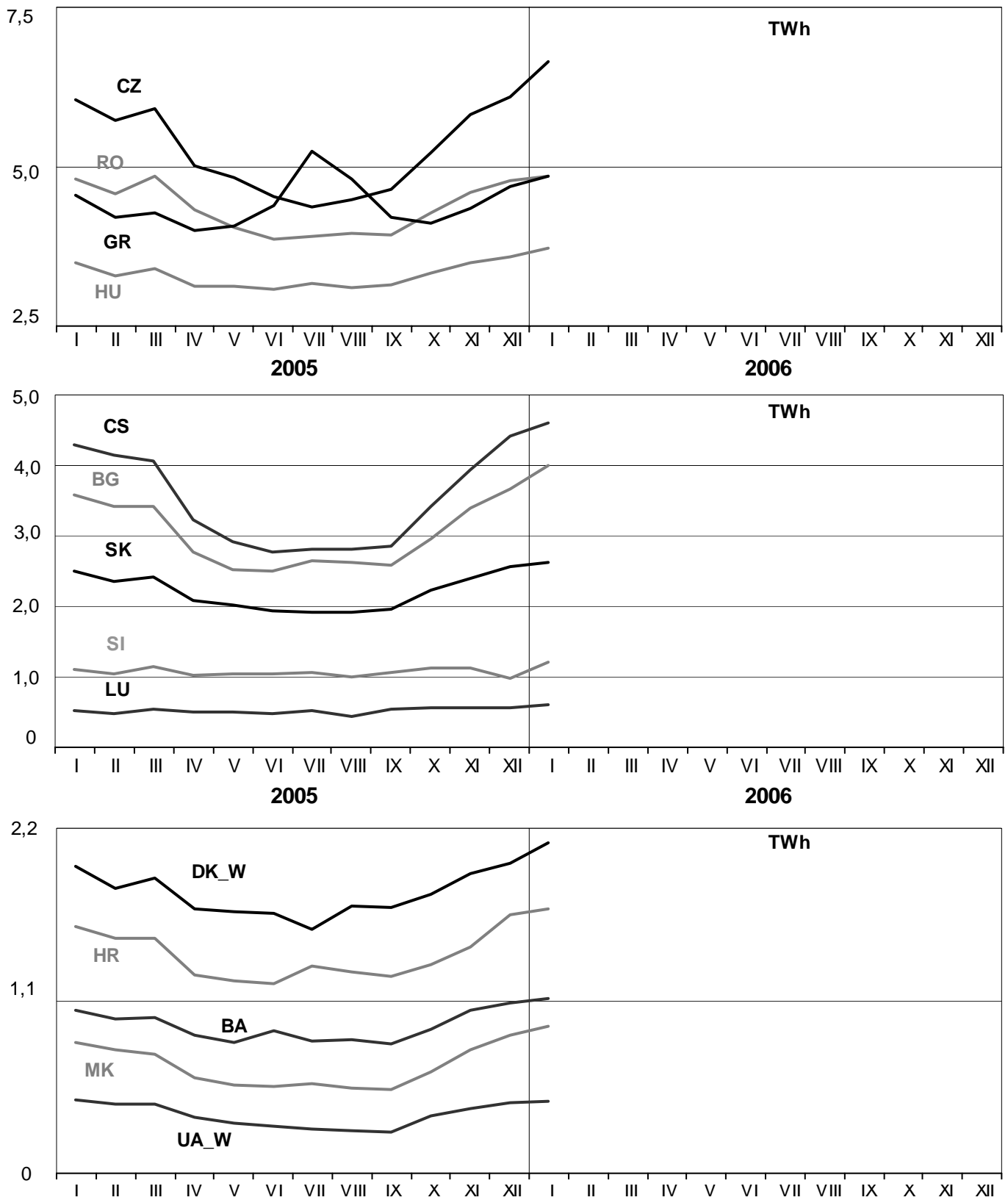
January 2006



3

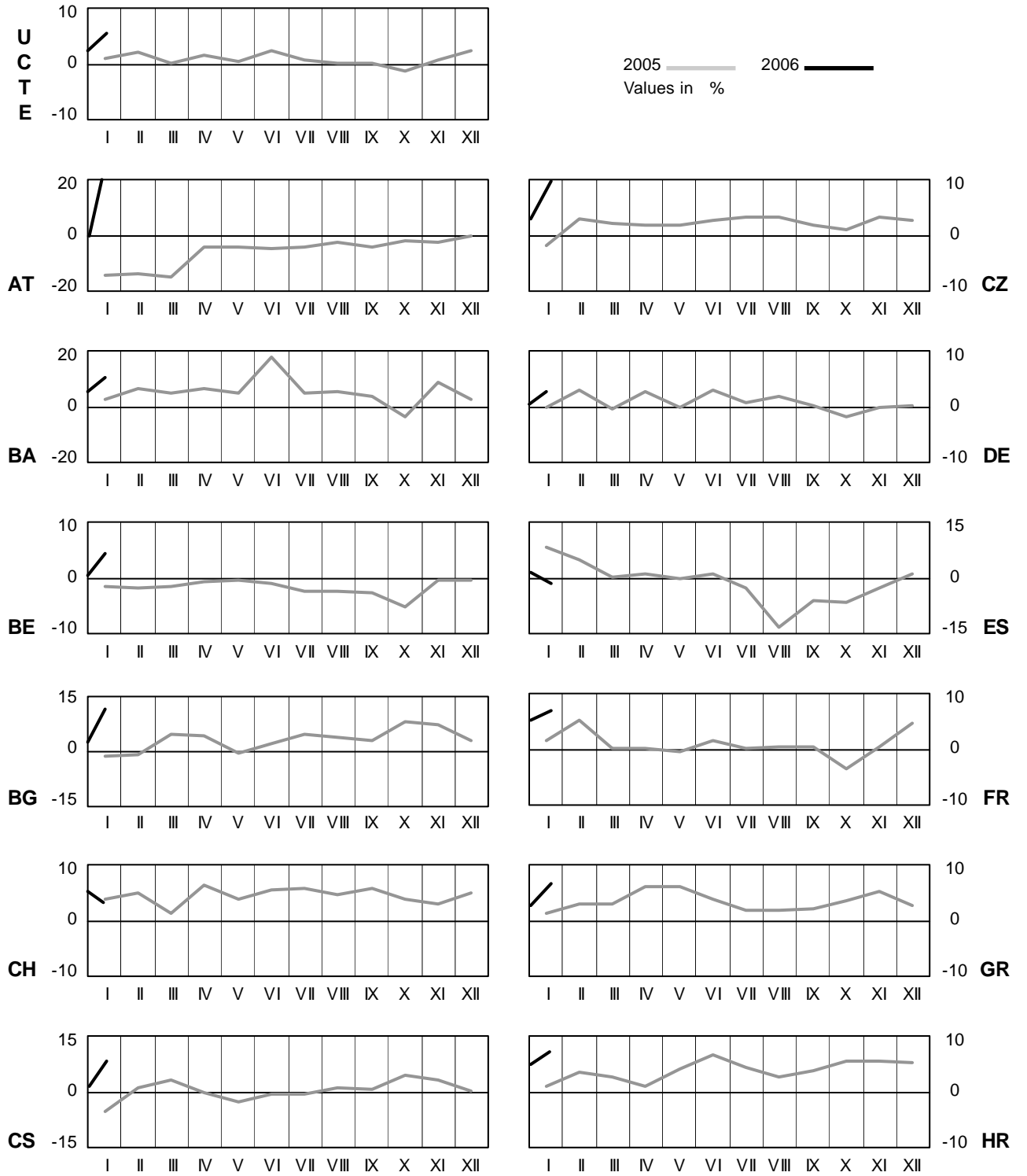
Monthly consumption

January 2006



4 Monthly consumption variation

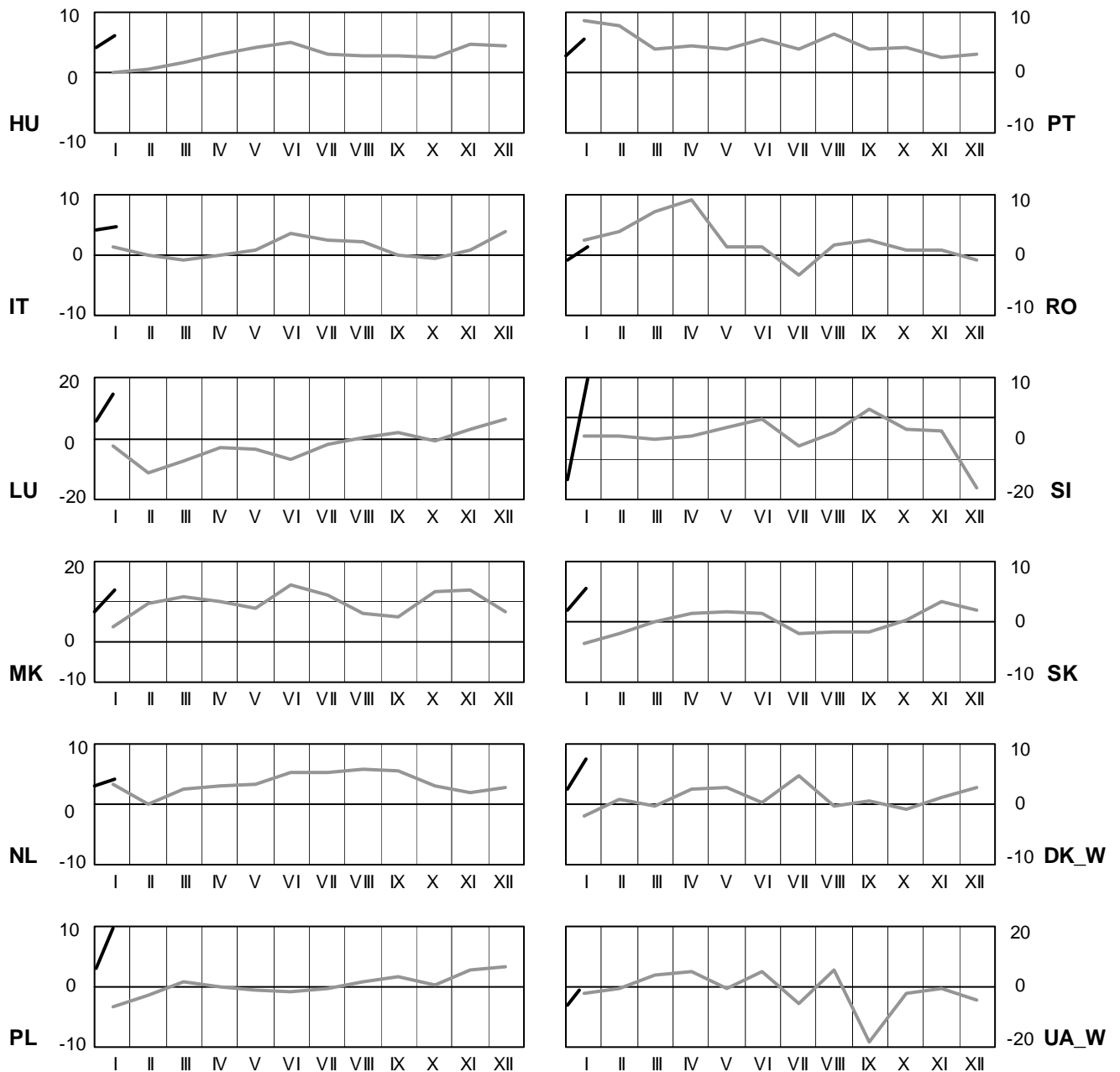
January 2006

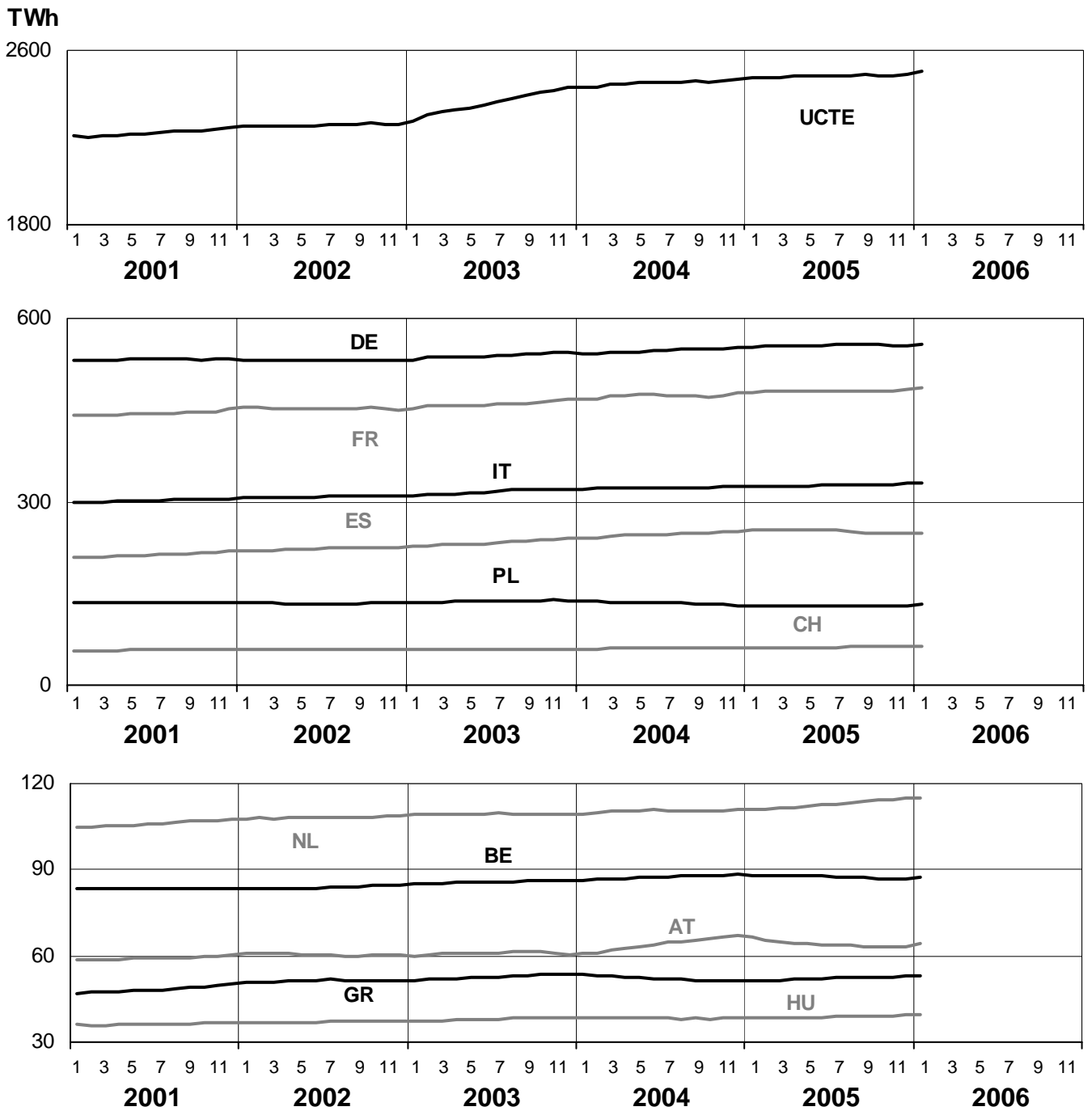


4 Monthly consumption variation

January 2006

2005 — 2006 —
Values in %

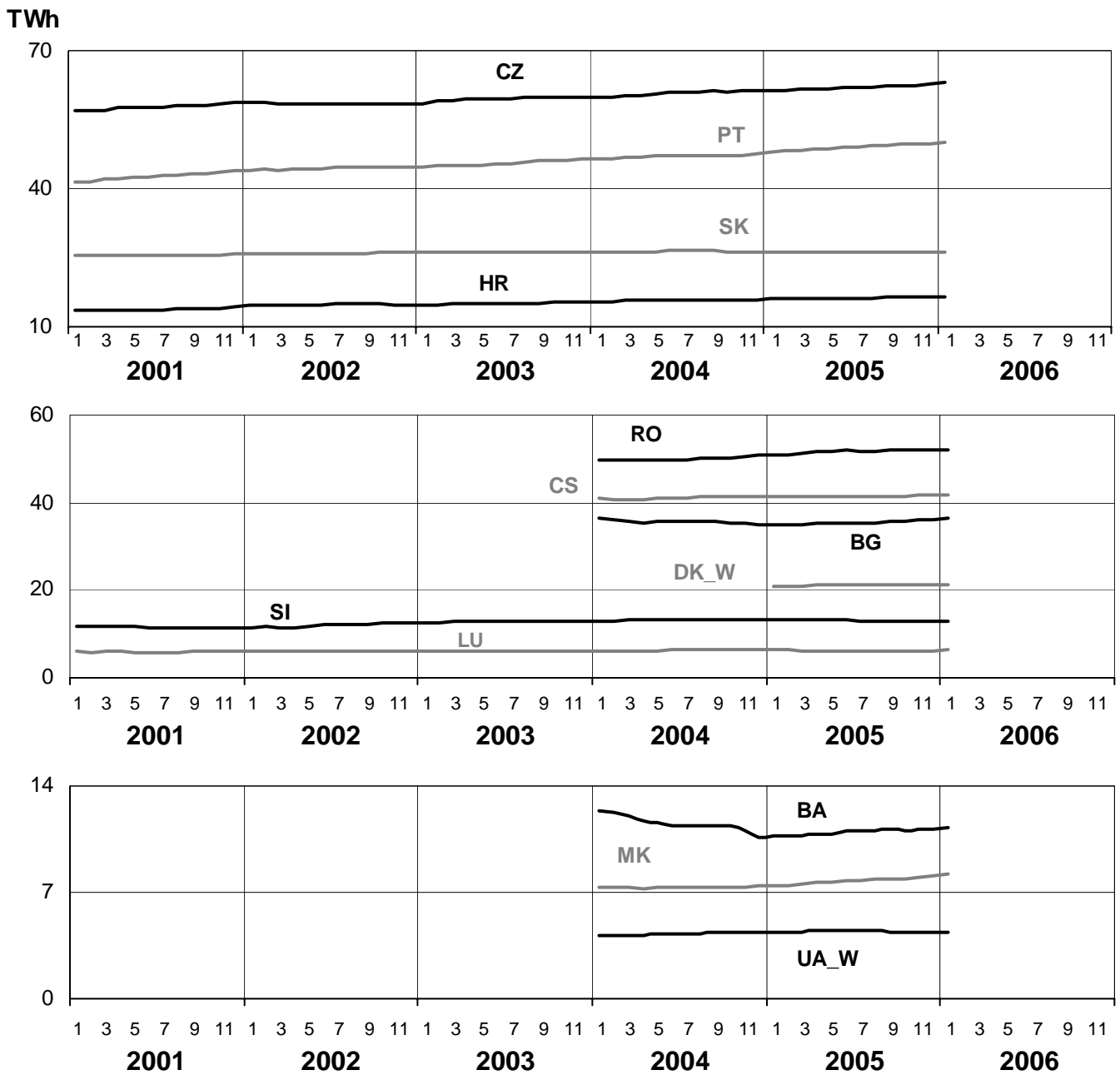




5

Consumption of the last 12 months

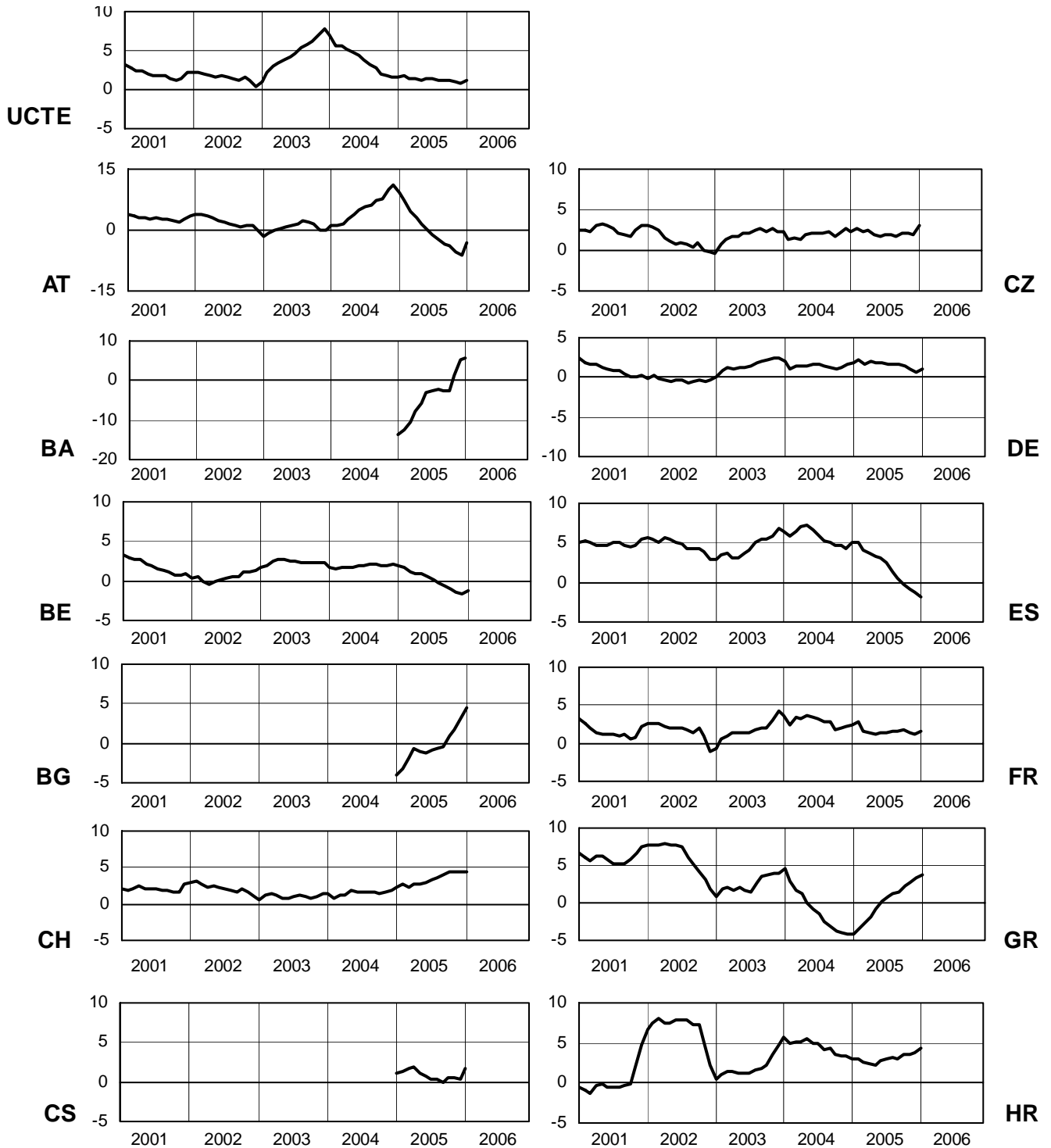
January 2006



6

Variation of the last 12 months' consumption in %

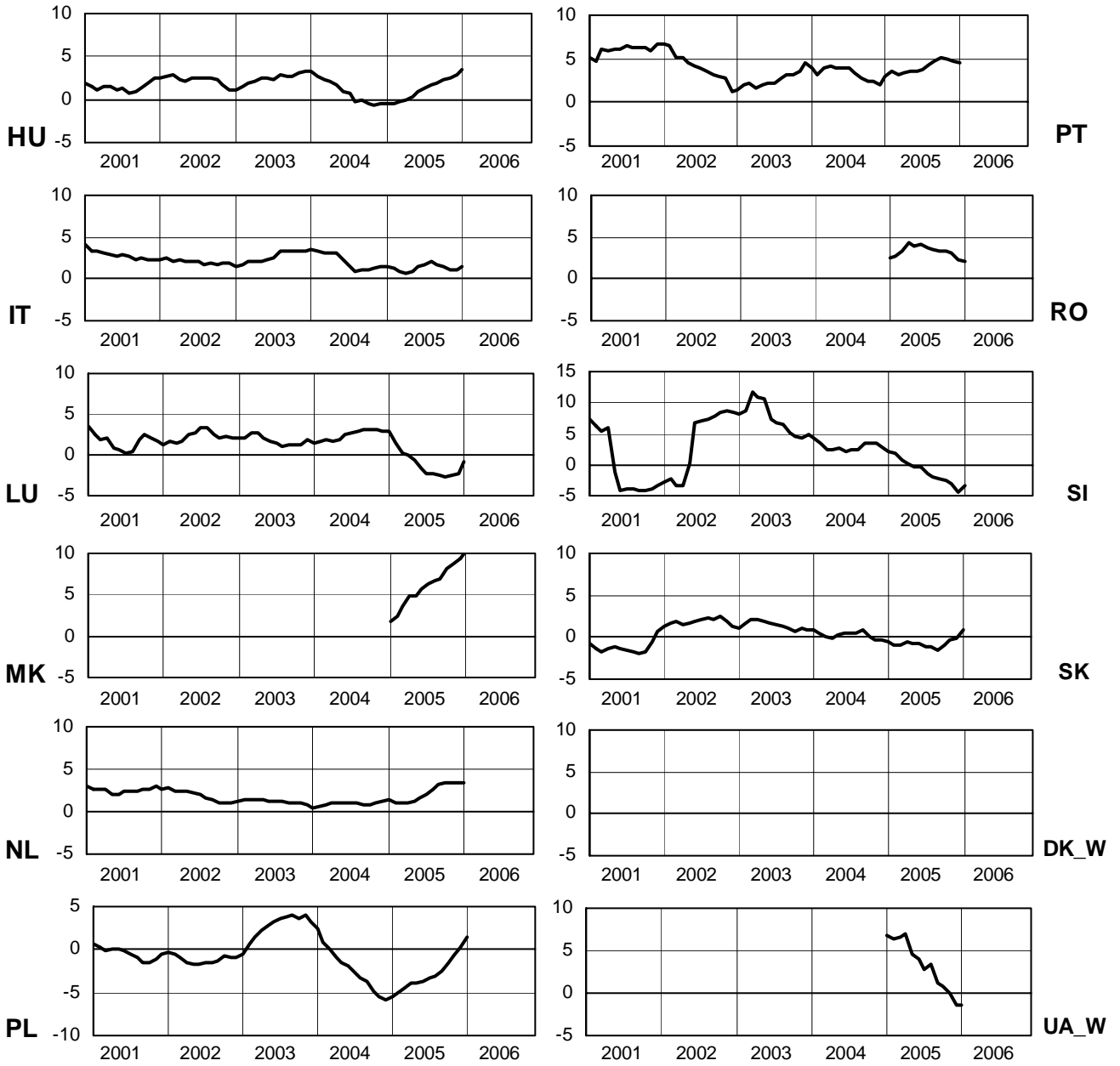
January 2006

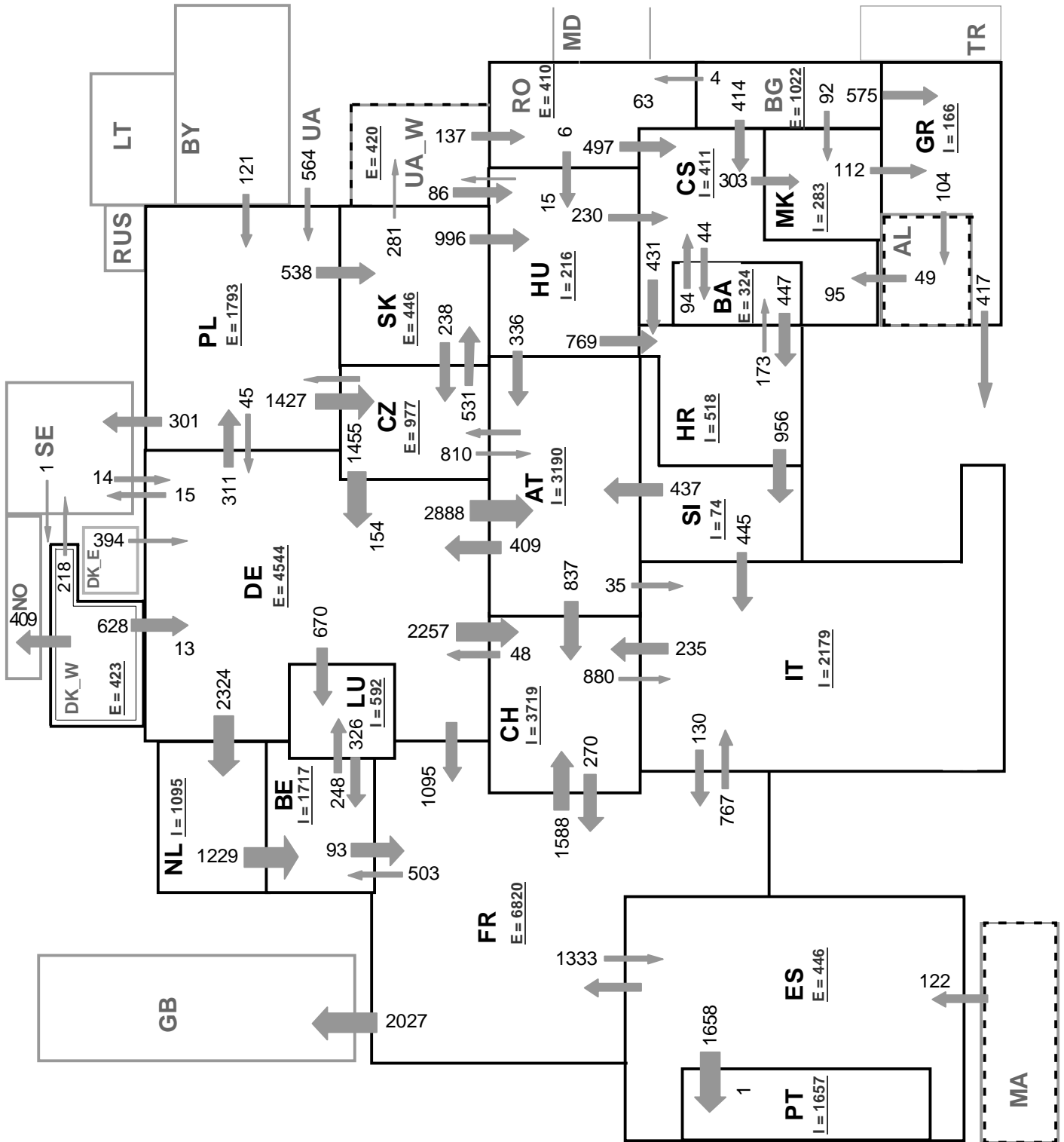


6

Variation of the last 12 months' consumption in %

January 2006





Associate member

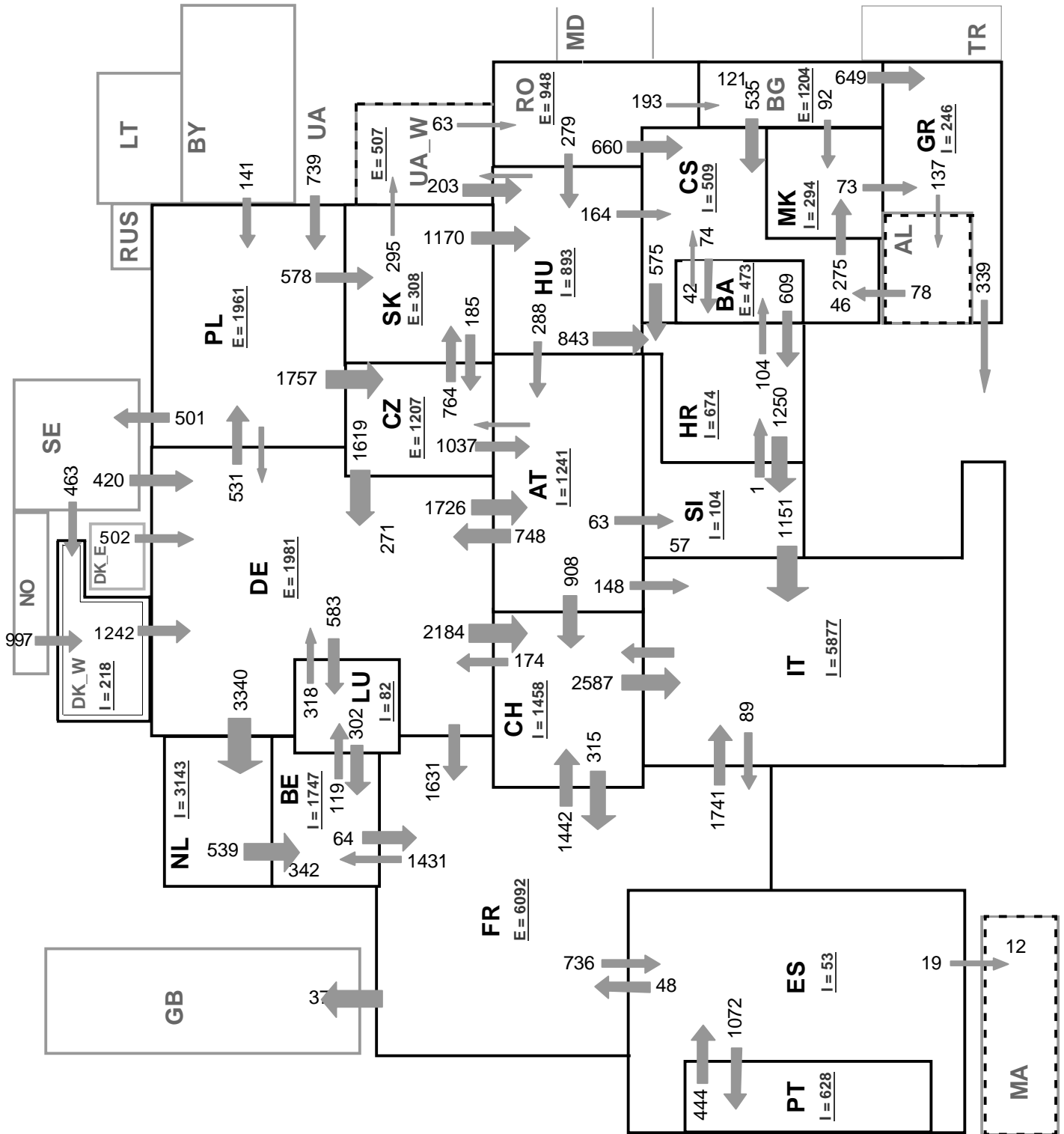
Synchronous operation with UCTE region

Sum of load flows in MW:

UCTE = 33189 MW

Total = 38768 MW

I = Import balance
E = Export balance



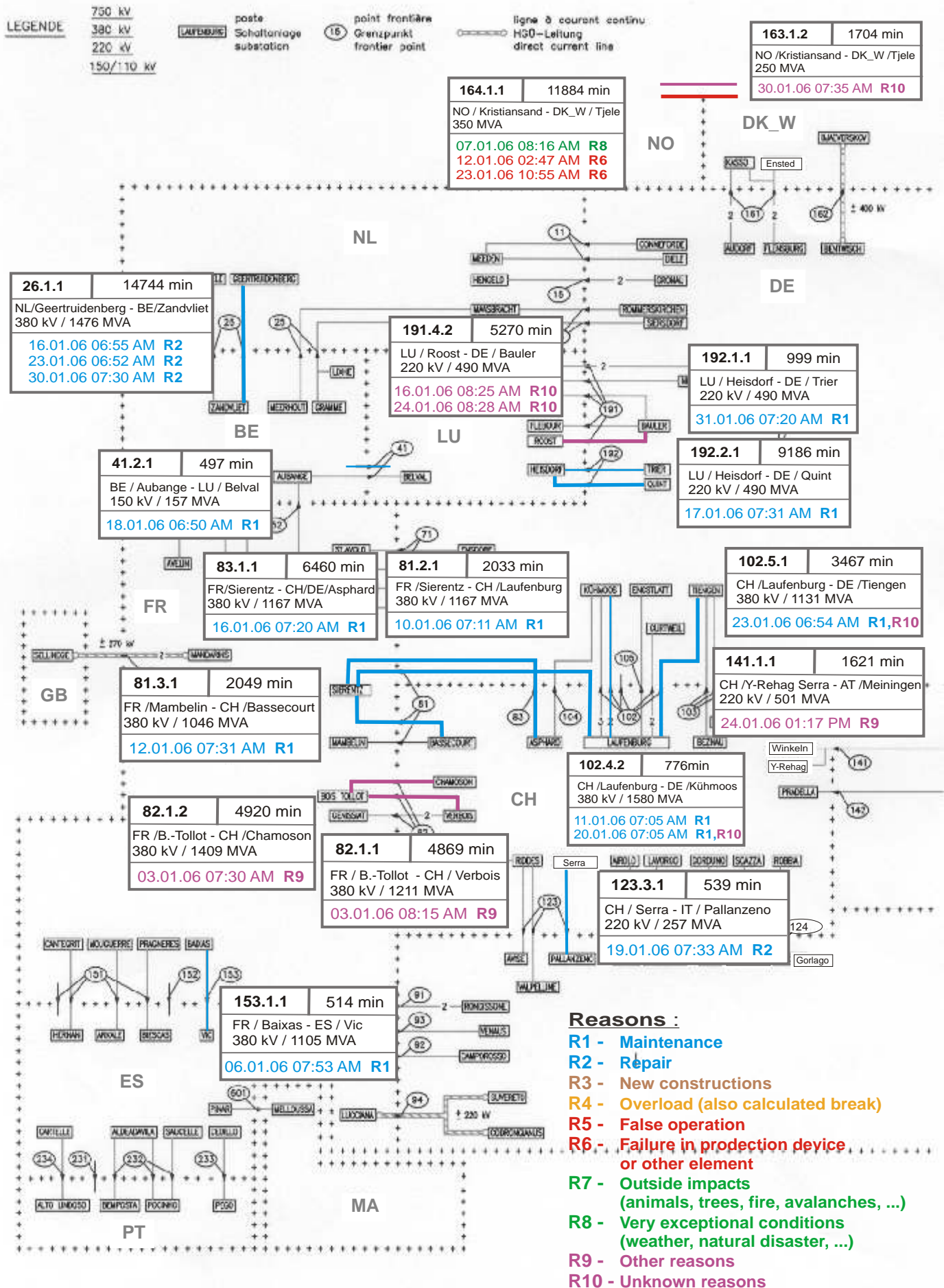
Associate member

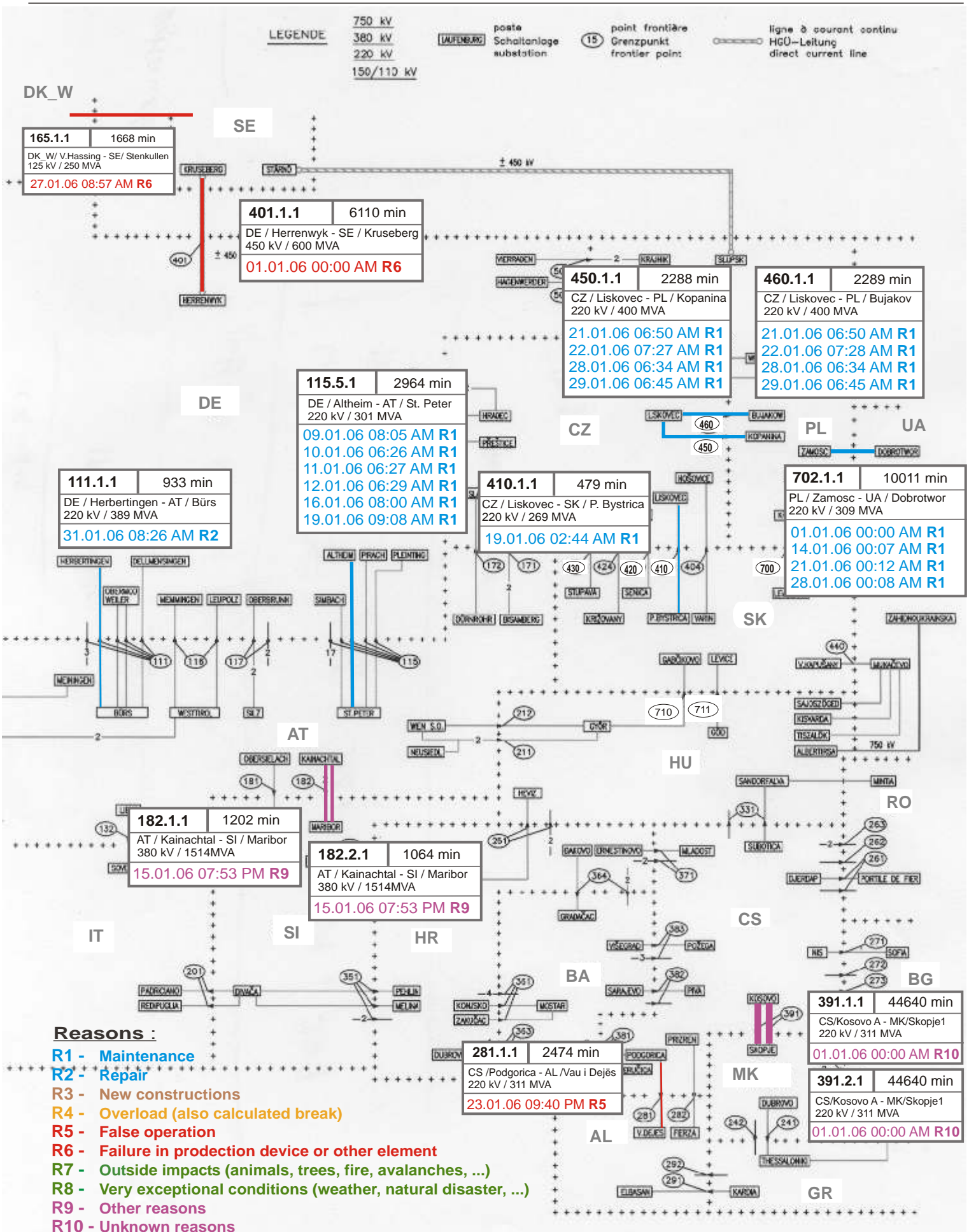
Synchronous operation with UCTE region

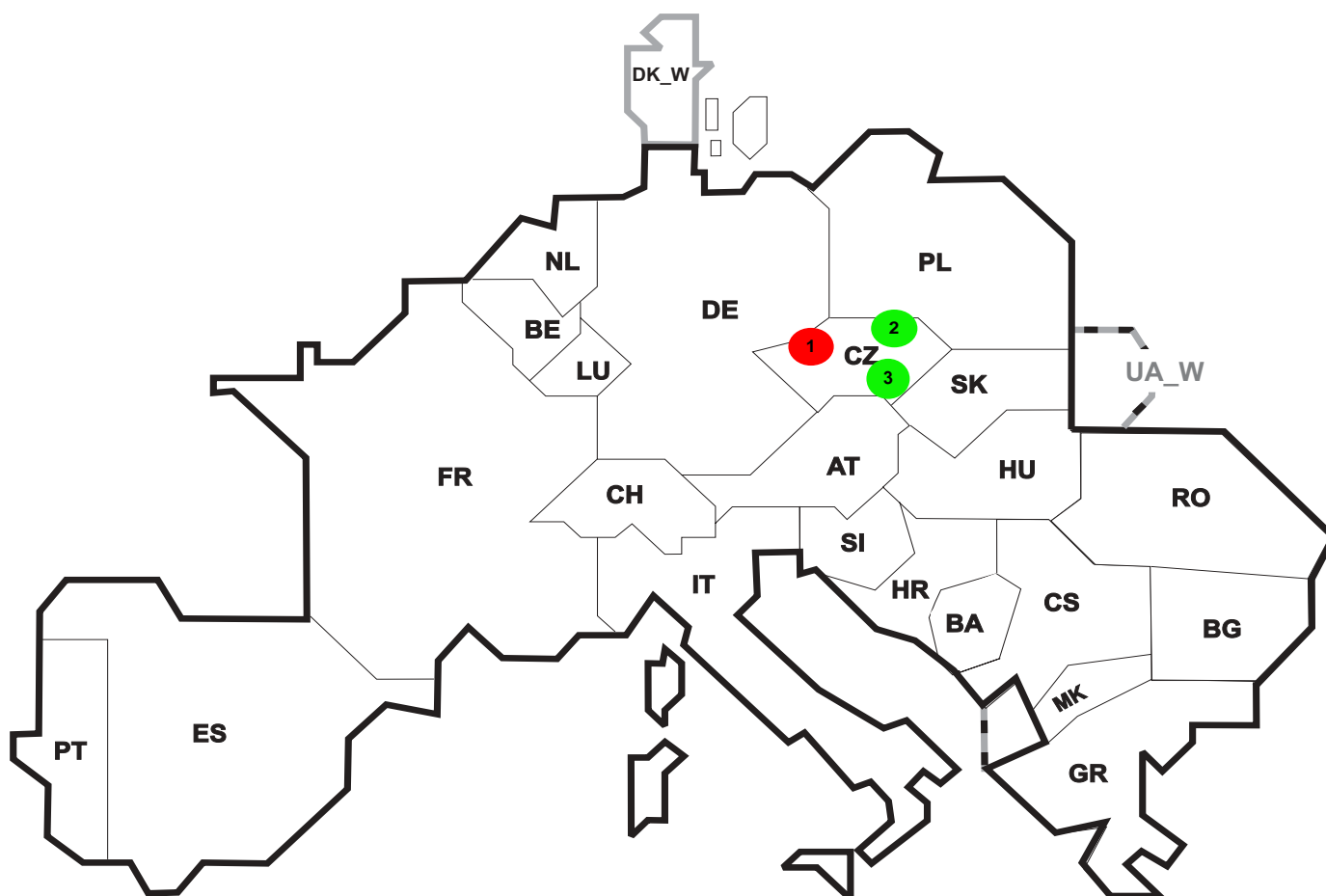
Sum of load flows in MW:

UCTE = 39380 MW
Total = 45611 MW

I = Import balance
E = Export balance







Reasons:

R4 Overload (also calculated break)

R5 False operation

R6 Failure in protection device or other element

R7 Outside impacts (animals, trees, fire, avalanches, ...)
(animals, trees, fire, avalanches, ...)

R8 Very exceptional conditions
(weather, natural disaster, ...)

R9 Other reasons

R10 Unknown reasons

No	Country	Substation	Reason	Energy not supplied [MWh]	Total loss of power [MW]	Restoration time [min]	Equivalent time of interruption ¹
1	CZ	Neznasov	R5	37	0	447	0,31
2	CZ	Nosovice	R7	11	0	3	0,09
3	CZ	Nosovice	R8	7	0	3	0,06

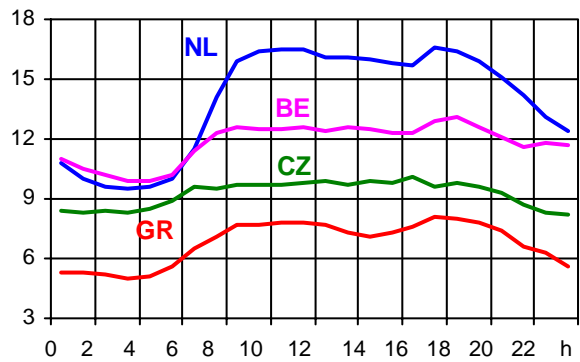
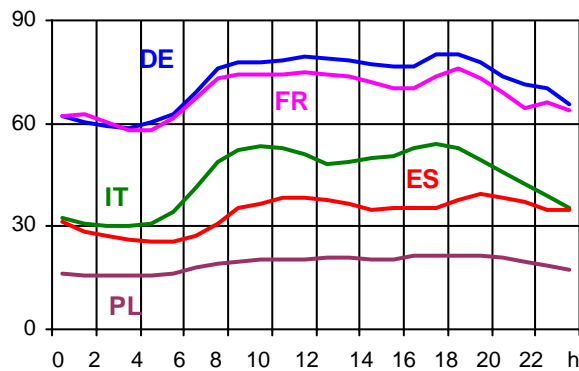
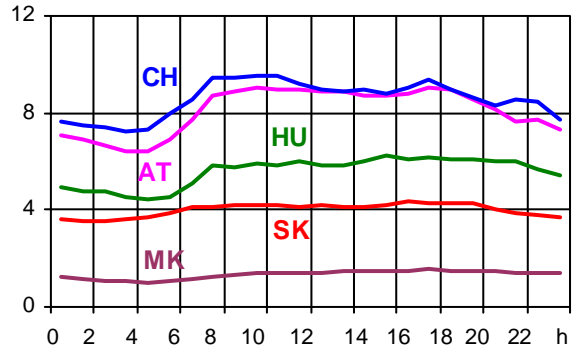
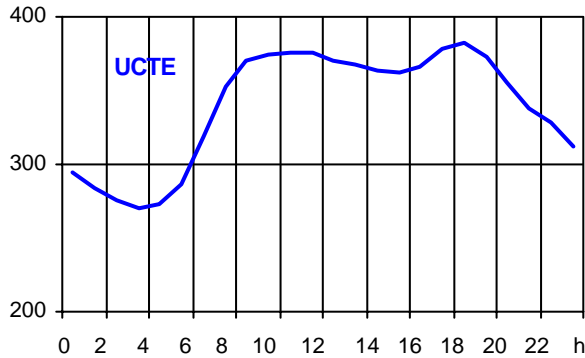
¹ (year [in min] * energy not supply) / consumption last 12 months

Control area	Export Programs	Import Programs	Export Programs at 03:00	Import Programs at 03:00	Export Programs at 11:00	Import Programs at 11:00
AT	534209	983492	970	631	1777	834
BA	361713	30716	381	0	478	0
BE	421441	1224063	98	1725	1141	2721
BG	n.a.	n.a.	n.a.	n.a.	n.a.	n.a.
CH	1023554	2732613	197	3874	3003	4420
CS	544197	916742	652	1087	833	1328
CZ	1657062	844635	2261	1195	2475	1199
DE	5321254	1614786	5944	2306	5629	2203
ES	1007491	627743	1869	1365	1137	1083
FR	6750687	4105368	10837	4051	10576	4556
GR	177813	369384	420	562	335	562
HR	276858	703979	493	1062	404	1115
HU	509058	1094374	866	1097	745	1669
IT	277562	2414450	364	2554	89	5964
MK	1900	188500	100	257	81	360
NL	476925	2134932	1168	2258	0	3141
PL	1398012	89749	1881	100	2272	210
PT	81759	787305	0	1700	362	1024
RO	640706	130553	675	168	1100	181
SI	594422	720222	856	962	905	1025
SK	641915	292296	828	340	825	475
DK_W	887474	359234	623	166	1200	1460
UA_W	344184	0	425	0	500	0

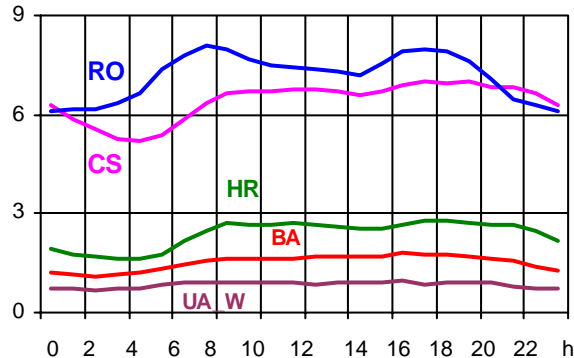
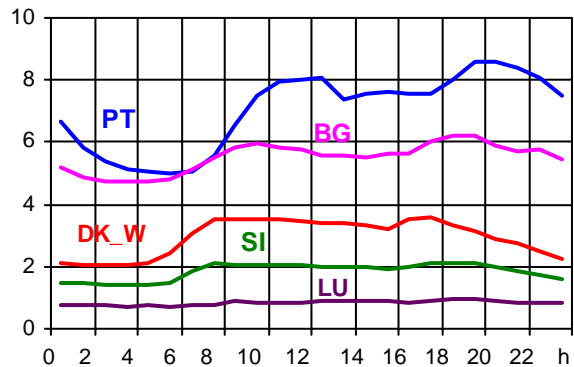
- Control areas can differ from national borders (i.e. German block which includes parts of AT, LU and DK).
- Values are calculated on an hourly base (MWh).
- This values are not the provisional values entered in the VULCANUS system, but the definitive values after an eventual correction during the actual date.
- Export Programs: Sum of all positive values of every hour of every border
- Import Programs: Sum of all negative values of every hour of every border
- Export Programs at 03:00: Sum of all positive values the third Wednesday from 02:00 to 03:00 a.m.
- Import Programs at 03:00: Sum of all negative values the third Wednesday from 02:00 to 03:00 a.m.
- Export Programs at 11:00: Sum of all positive values the third Wednesday from 10:00 to 11:00 a.m.
- Import Programs at 11:00: Sum of all negative values the third Wednesday from 10:00 to 11:00 a.m.

Consumption hourly load curves on 18.01.2006

Values in GWh



	Peak load		Load representativity %	Parallel power ² MW
	MW	var.% ¹		
AT	9045	-14,0	100	8742
BA	1791	-3,8	100	2113
BE	13101	0,7	100	10709
BG	6212	6,8	100	5773
CH	9514	0,4	100	11032
CS	7007	1,6	100	6212
CZ	10095	6,5	100	11597
DE	80379	0,1	91	78600
ES	39210	-2,0	98	37340
FR	76219	0,1	100	80716
GR	8055	4,8	100	7547
HR	2782	3,7	100	2104
HU	6271	2,0	100	5092
IT	53816	1,2	100	47280
LU	966	17,4	100	865
MK	1525	11,3	100	1119
NL	16638	2,4	100	13312
PL ³	21739	8,8	100	25536
PT	8580	7,0	96	6997
RO	8124	4,0	100	8414
SI	2128	6,2	95	1837
SK	4316	3,5	100	4379
UCTE	382123	1,1		377316
DK_W	3565	0,8	100	3347
UA_W	969	1,6	100	1399



¹ Variation as compared to corresponding month of the previous year

² Power produced in parallel operation (including autoproduction)

³ Average value of each hour



Contact

Boulevard Saint-Michel, 15
B-1040 Brussels – Belgium
Tel +32 2 741 69 40 – Fax +32 2 741 69 49

info@ucte.org
www.ucte.org