



November 2002

Table of contents		Page
1	Electricity supply situation of the countries	2
2	Physical energy flows	3
3	Monthly consumption	4
4	Monthly consumption variation	5
5	Consumption of last 12 months	6
6	Variation of the last 12 months' consumption	7
7	Load flows (night)	8
8	Load flows (day)	9
9	Unavailability of international tie lines (major events)	10
10	Network reliability (major events)	12
11	Scheduled exchanges	13
12	Load on the 3 rd Wednesday	14

1

Electricity supply situation of the countries

November 2002

Countries	B	D	E	F	GR	I	SLO	HR	YU ⁴	L	NL	A	P	CH	CZ	H	PL	SK	UCTE
Net production in GWh¹																			
Hy	146	1985	2377	6089	300	4425	365	688	1291	83	0	3112	1132	3190	242	10	336	575	26346
Tn	3511	13321	5372	36119	-	-	486	0	0	0	326	0	0	2309	1545	1238	0	1525	65752
Tc	2859	28485	9850	3298	3347	18184	383	414	2140	267	7872	2117	2112	226	4552	1760	12704	831	101401
Total	6516 ²	43791 ²	17599 ²	45506	3647 ²	22609	1234	1102 ²	3431	350	8198 ²	5229	3244 ²	5725 ²	6339 ²	3008 ²	13040 ²	2931 ²	193499 ²
Exchange balance in GWh																			
Imp. = +	798	578	491	-7509	221	4522	-211	117	640	275	1369	-369	298	-395	-935	221	-746	-568	-1203
Exp. = -																			
Consumption of pumps in GWh																			
	131	518	570	635	85	859	0	2	69	96	0	40	50	184	46	0	197	26	3508
Consumption in GWh¹																			
monthly																			
	7183	43851	17520	37362	3783	26272	1023	1217	4002	529	9567	4820	3492	5146	5358	3229	12097	2337	188788
Δ ³ [%]	-1,6	0,1	-1,4	-7,1	0,0	2,2	4,5	-8,1	-7,9	1,9	2,5	-1,8	1,3	-1,7	-2,8	-1,5	-1,2	-1,8	-1,7
last 12 months																			
	83235	497683	210607	437011	47000	309737	11700	14861	45054	6069	109421	51168	40790	58542	58439	37256	133531	26134	2178241
Δ ³ [%]	-0,3	0,5	3,3	1,3	3,3	1,8	9,2	5,1	1,8	2,2	2,3	-5,1	3,0	1,7	0,0	1,8	-1,0	1,8	1,0
Energy capability factor																			
	-	1,54	-	-	0,64	1,30	1,49	1,25	0,77	-	-	-	1,31	1,80	-	-	-	1,69	1,3

¹ Percentage as referred to total values in %

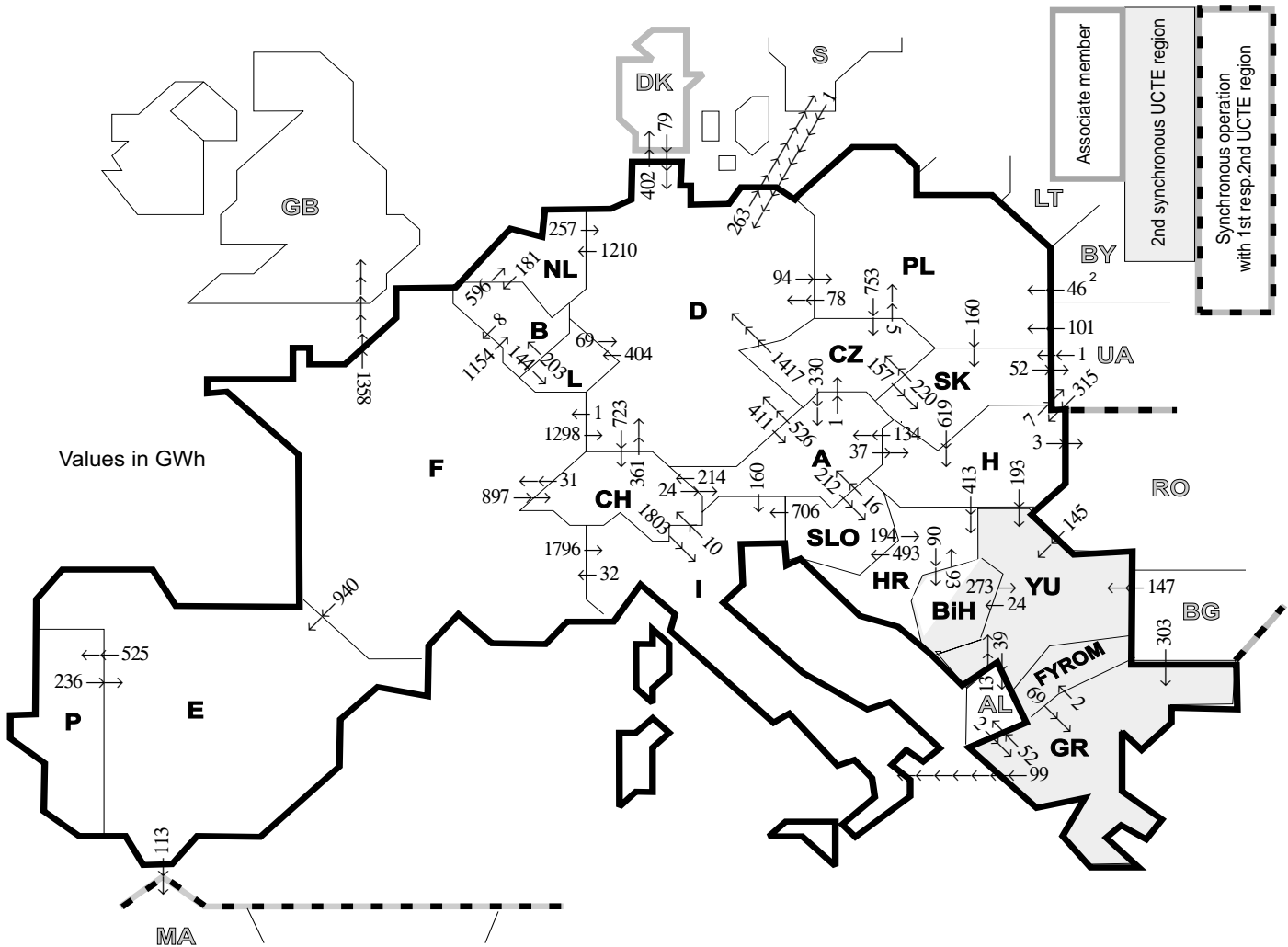
Countries	B	D	E	F	GR ⁵	I	SLO	HR	YU ⁴	L	NL	A	P	CH	CZ	H	PL	SK
Production	100	94	94	97	91	100	95	100	96	98	100	84	91	100	100	100	100	100
Consumption	100	94	94	97	91	100	95	100	96	99	100	90	91	100	100	100	100	100

² Including deliveries from industry

³ Variation as compared to corresponding period of the previous year and representativity 100%

⁴ YU = FRY + FYROM (Federal Republic of Yugoslavia and Former Yugoslav Republic of Macedonia)

⁵ The representativity of data referring to the whole country including the isolated systems of the Greek island is 91%. The representativity of data referring to the mainland interconnected system is 98%.



Exporting countries	Importing countries																				Σ Export
	B	D	E	F	GR	I	SLO	HR	BiH	YU	L	NL	A	P	CH	CZ	H	PL	SK	III ¹	
B	-	-	-	8	-	-	-	-	-	-	144	596	-	-	-	-	-	-	-	-	748
D	-	-	-	1	-	-	-	-	-	-	404	1210	411	-	723	0	-	94	-	665	3508
E	-	-	-	0	-	-	-	-	-	-	-	-	525	-	-	-	-	-	-	113	638
F	1154	1298	940	-	-	1796	-	-	-	-	-	-	-	897	-	-	-	-	-	1358	7443
GR	-	-	-	-	-	99	-	-	-	2	-	-	-	-	-	-	-	-	-	52	153
I	-	-	-	32	0	0	-	-	-	-	-	-	0	-	10	-	-	-	-	-	42
SLO	-	-	-	-	-	706	-	194	-	-	-	-	16	-	-	-	-	-	-	-	916
HR	-	-	-	-	-	493	-	90	0	-	-	-	-	-	-	-	0	-	-	-	583
BiH	-	-	-	-	-	-	-	93	273	-	-	-	-	-	-	-	-	-	-	-	366
YU	-	-	-	-	69	-	0	24	-	-	-	-	-	-	-	-	0	-	-	39	132
L	203	69	-	-	-	-	-	-	-	-	-	-	-	-	-	-	-	-	-	-	272
NL	181	257	-	-	-	-	-	-	-	-	-	-	-	-	-	-	-	-	-	-	438
A	-	526	-	-	-	160	212	-	-	-	-	-	-	-	214	1	37	-	-	-	1150
P	-	-	236	-	-	-	-	-	-	-	-	-	-	-	-	-	-	-	-	-	236
CH	-	361	-	31	-	1803	-	-	24	-	-	-	24	-	-	-	-	-	-	-	2219
CZ	-	1417	-	-	-	-	-	-	-	-	-	-	330	-	-	-	-	5	157	-	1909
H	-	-	-	-	-	-	-	413	-	193	-	-	134	-	-	-	-	-	0	10	750
PL	-	78	-	-	-	-	-	-	-	-	-	-	-	-	-	753	-	-	160	0	991
SK	-	-	-	-	-	-	-	-	-	-	-	-	-	-	-	220	619	0	-	52	891
III ¹	-	80	-	0	305	-	-	-	305	-	-	-	-	-	-	-	315	147	1	-	1153
Σ Import	1538	4086	1176	72	374	4564	705	700	114	773	548	1806	915	525	1844	974	971	246	318	2289	24538

Sum of physical energy flows between UCTE countries = 21096 GWh

Total physical energy flows = 24538 GWh

¹ III = Third countries: Albania, Belarus, Bulgaria, Denmark, Great Britain, Morocco, Rumania, Sweden and Ukraine

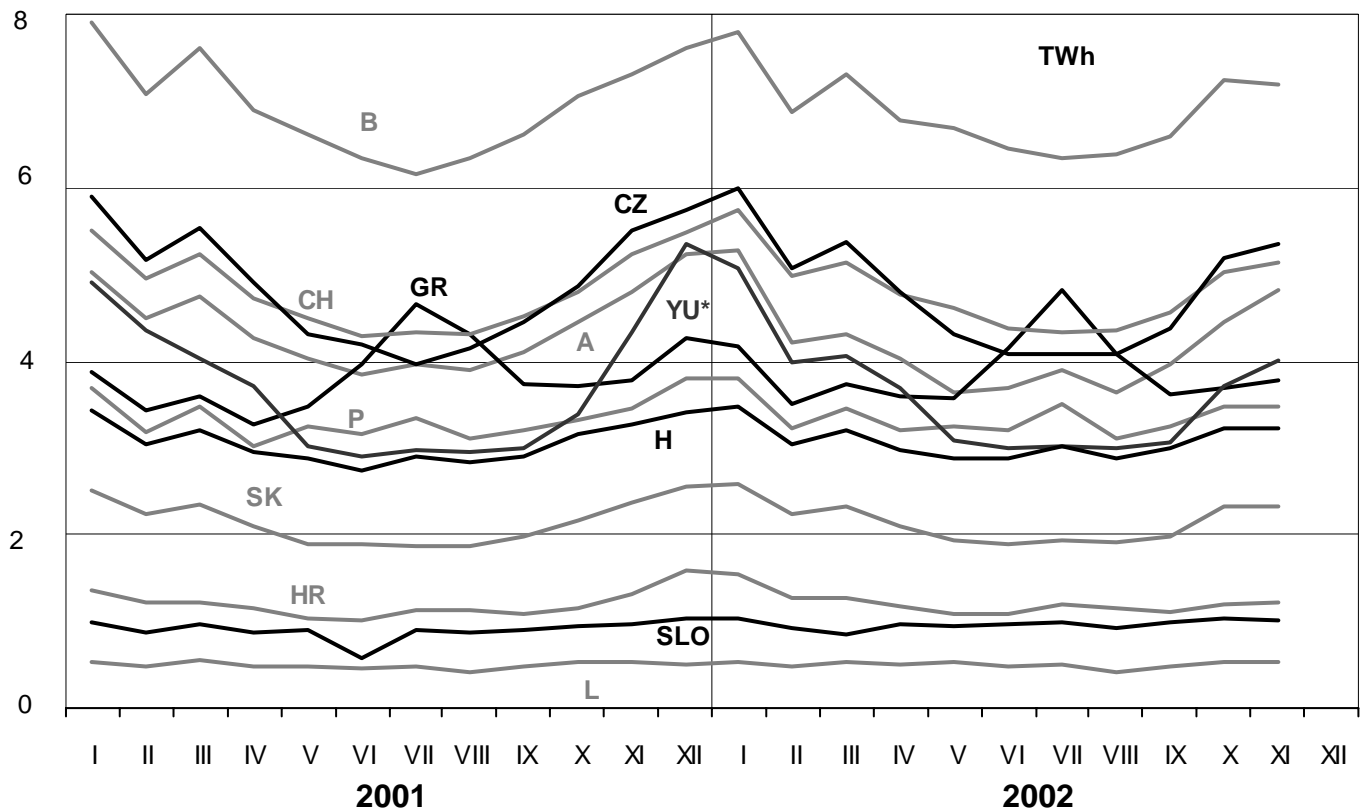
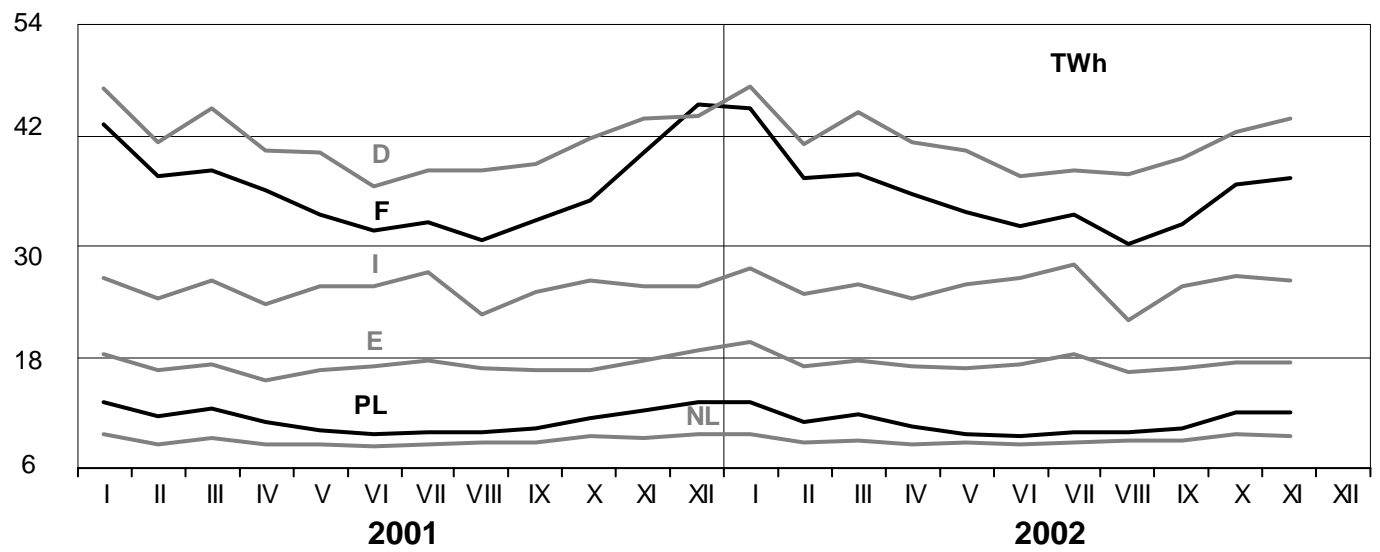
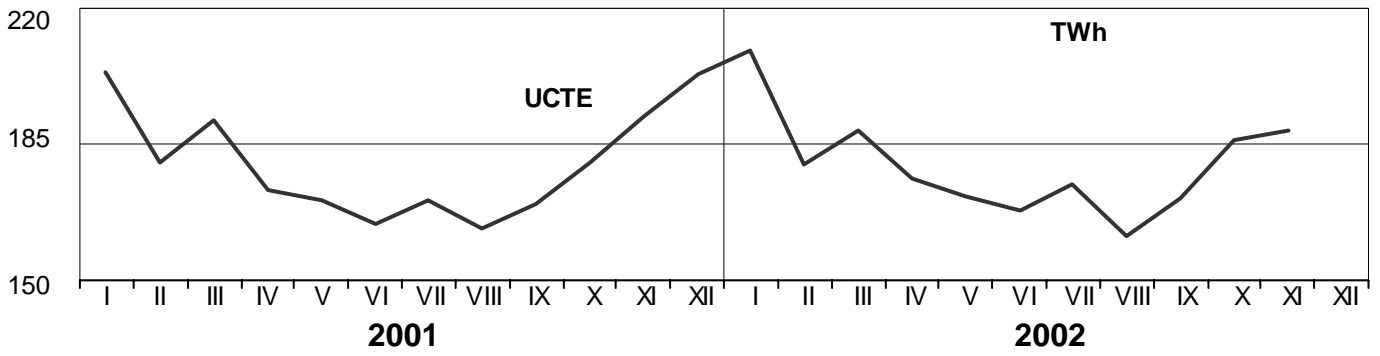
² Corresponds to the supply of a passive island in Poland with BY.

These physical energy flows were measured on the cross-frontier transmission lines (≥ 110 kV) listed in table 9 of the Statistical Yearbook. These values may differ from the official statistics and the exchange balances in chapter 1.

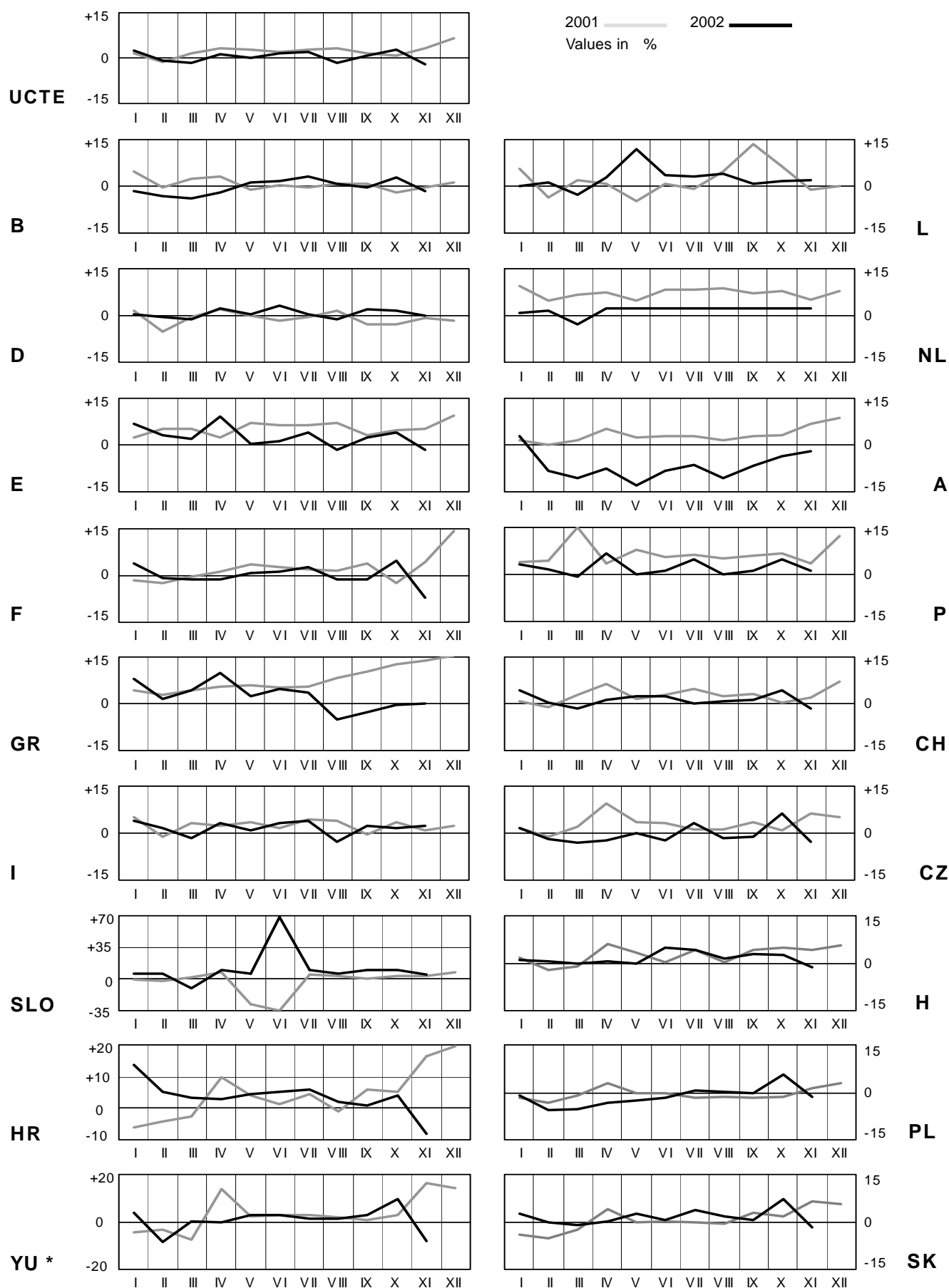
3

Monthly consumption

November 2002



* YU = FRY + FYROM (Federal Republic of Yugoslavia and Former Yugoslav Republic of Macedonia)

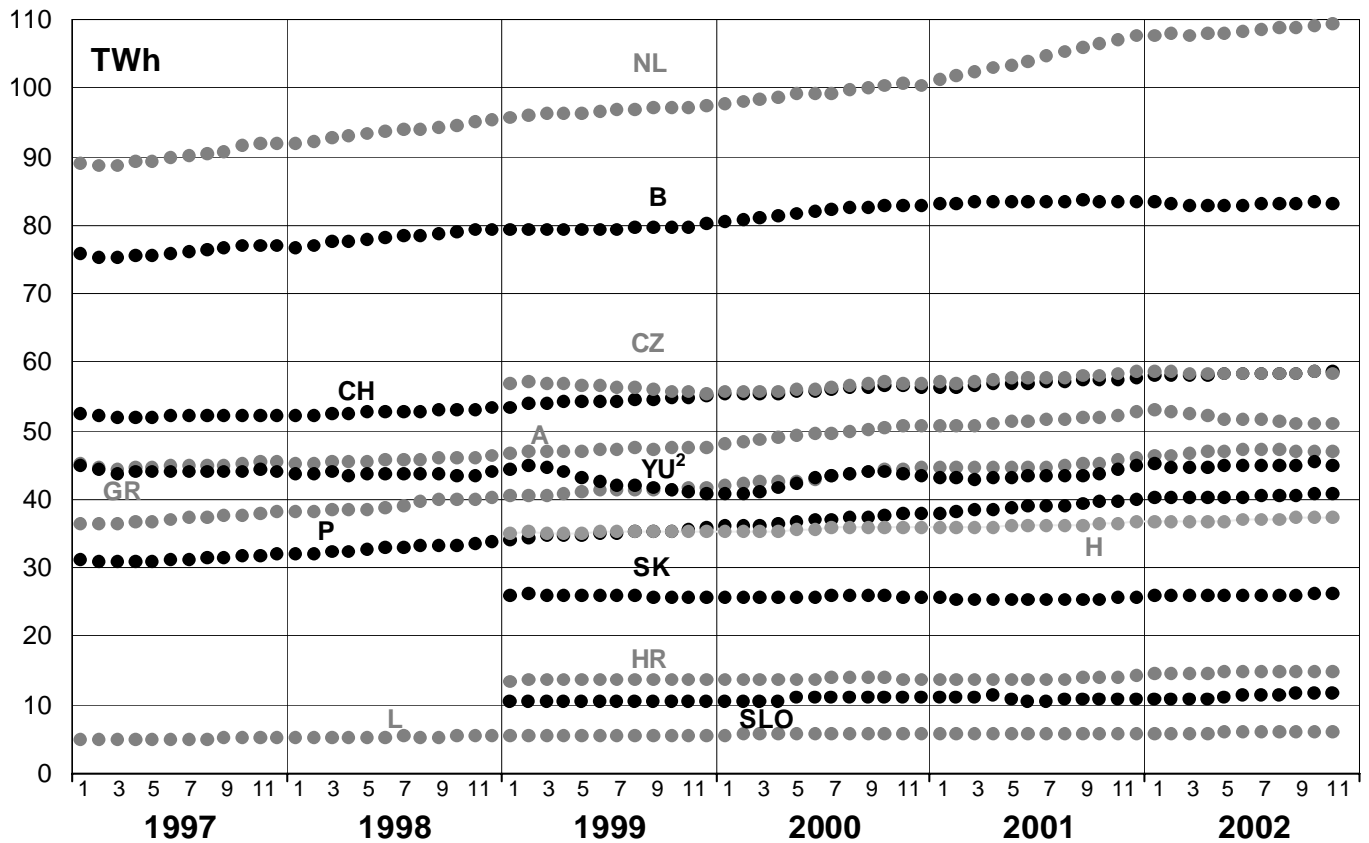
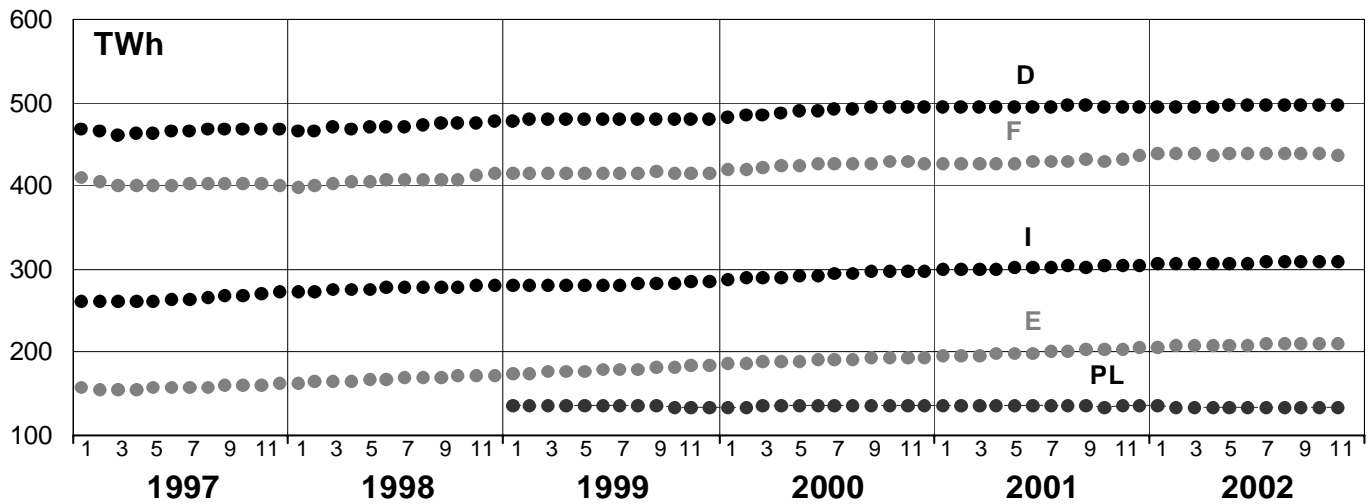
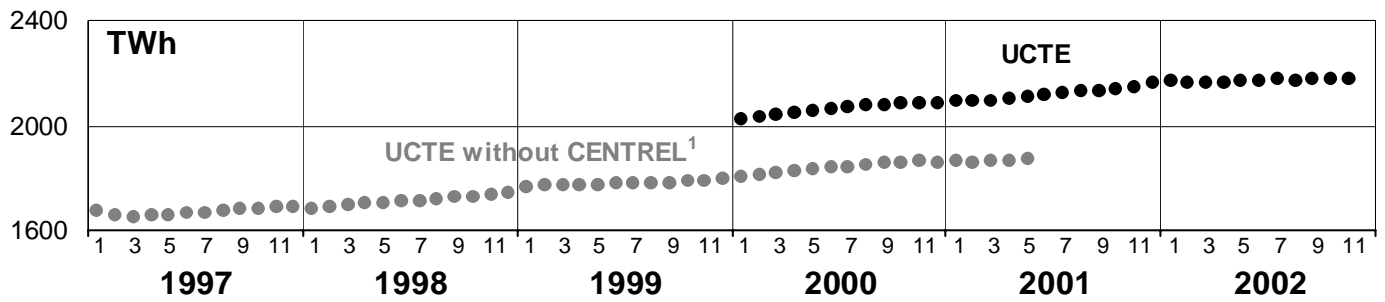


* YU = FRY + FYROM (Federal Republic of Yugoslavia and Former Yugoslav Republic of Macedonia)

5

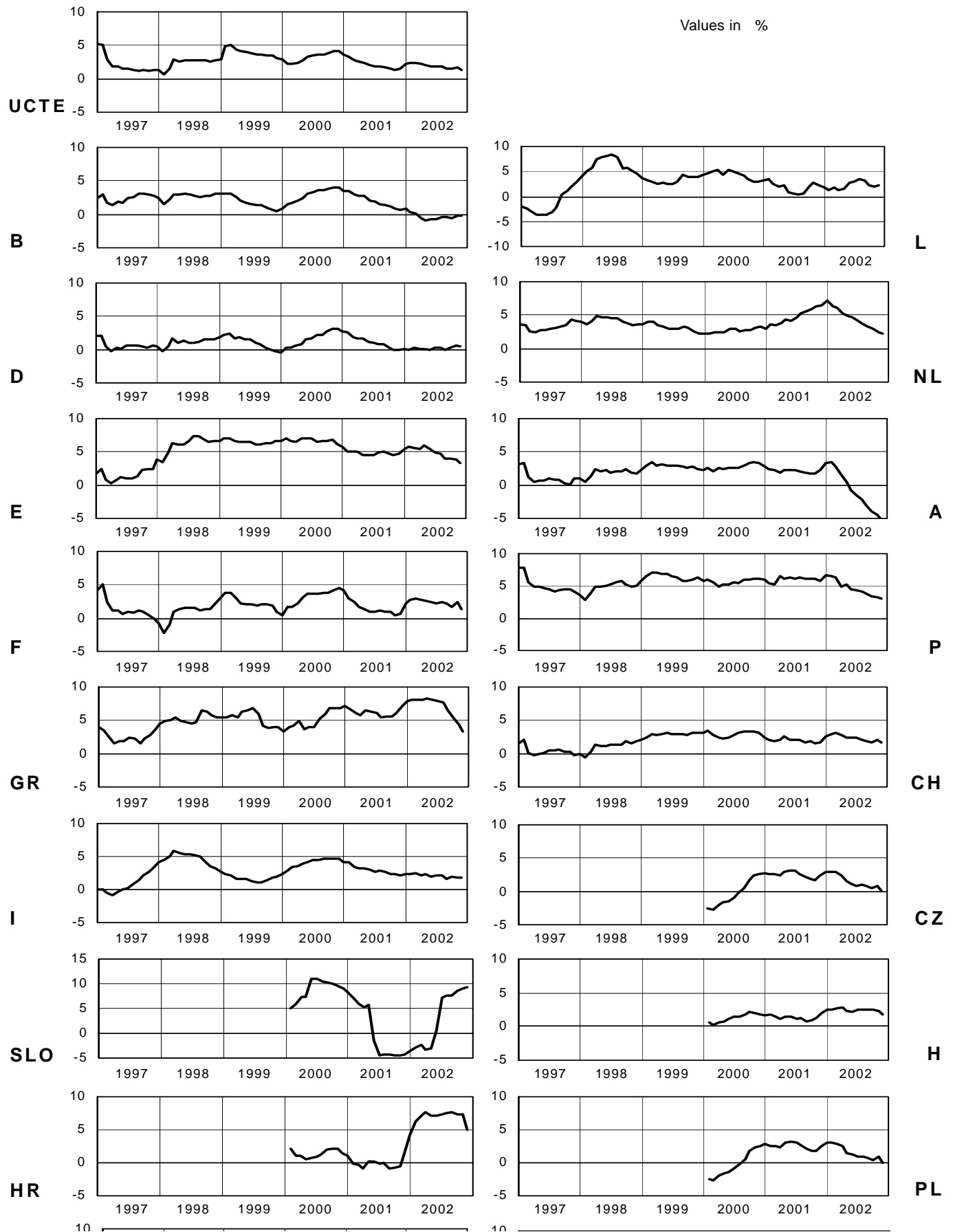
Consumption of last 12 months

November 2002

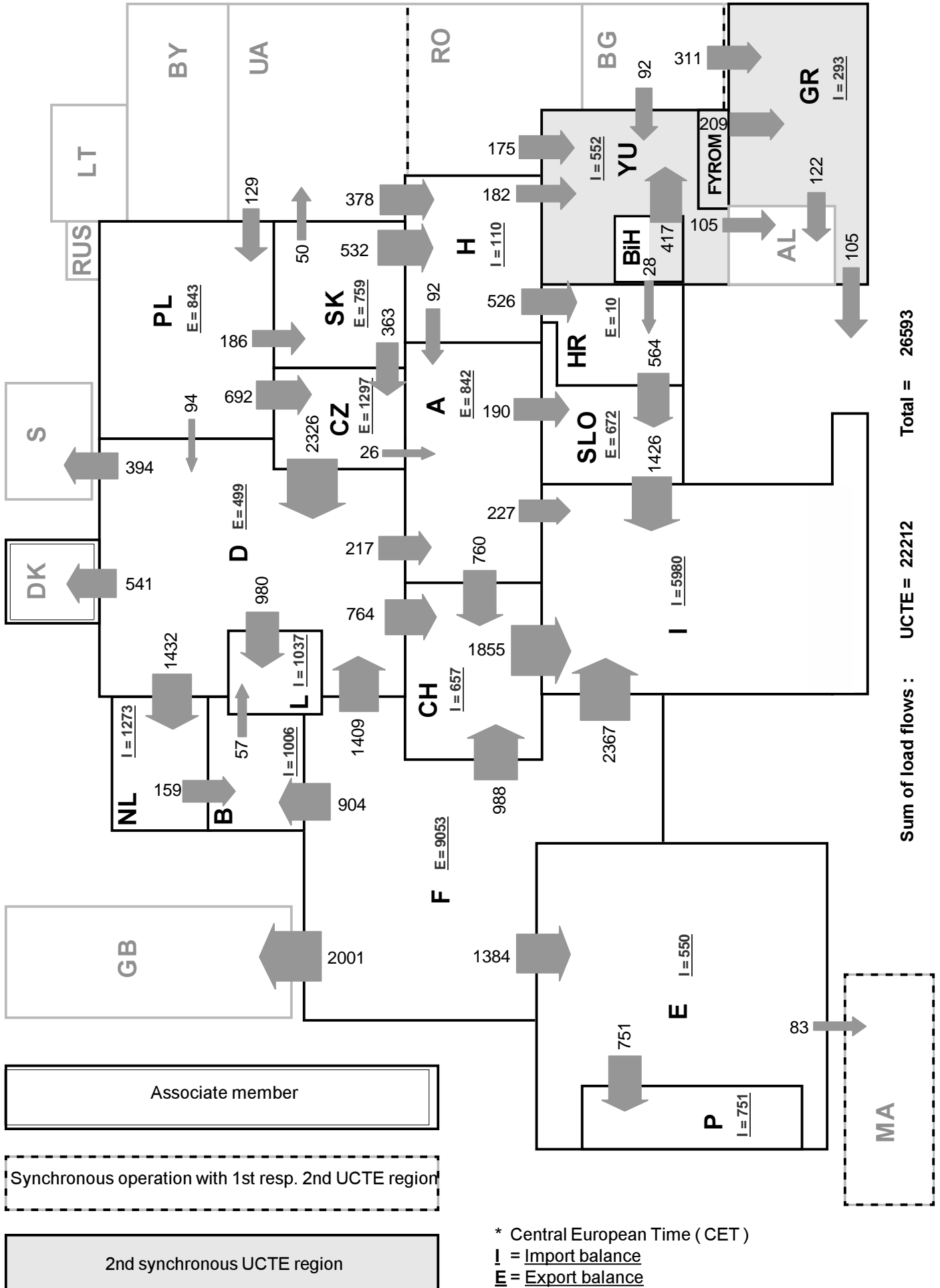


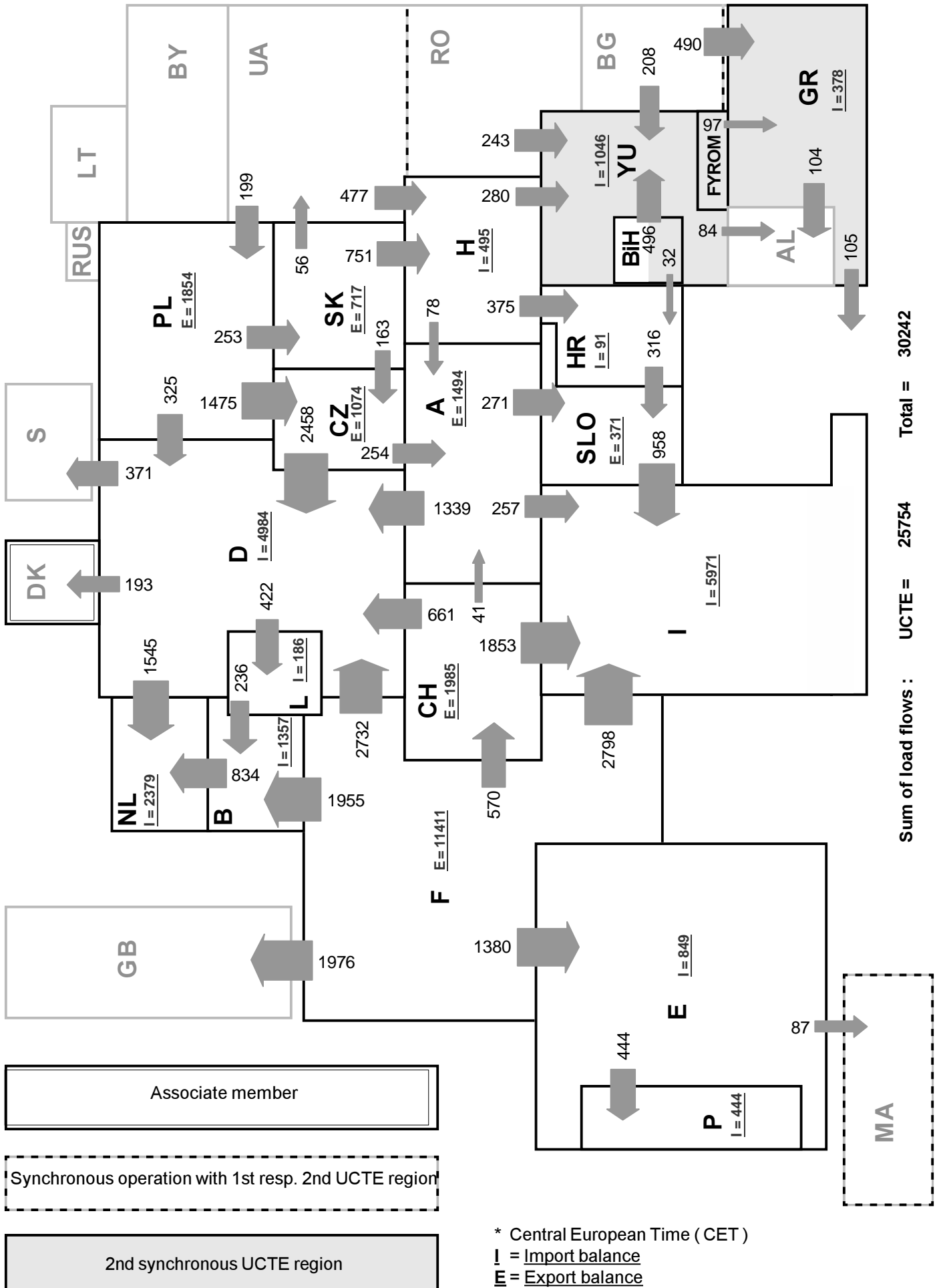
¹ CENTREL countries CZ, H, PL, SK member of UCTE from May 2001

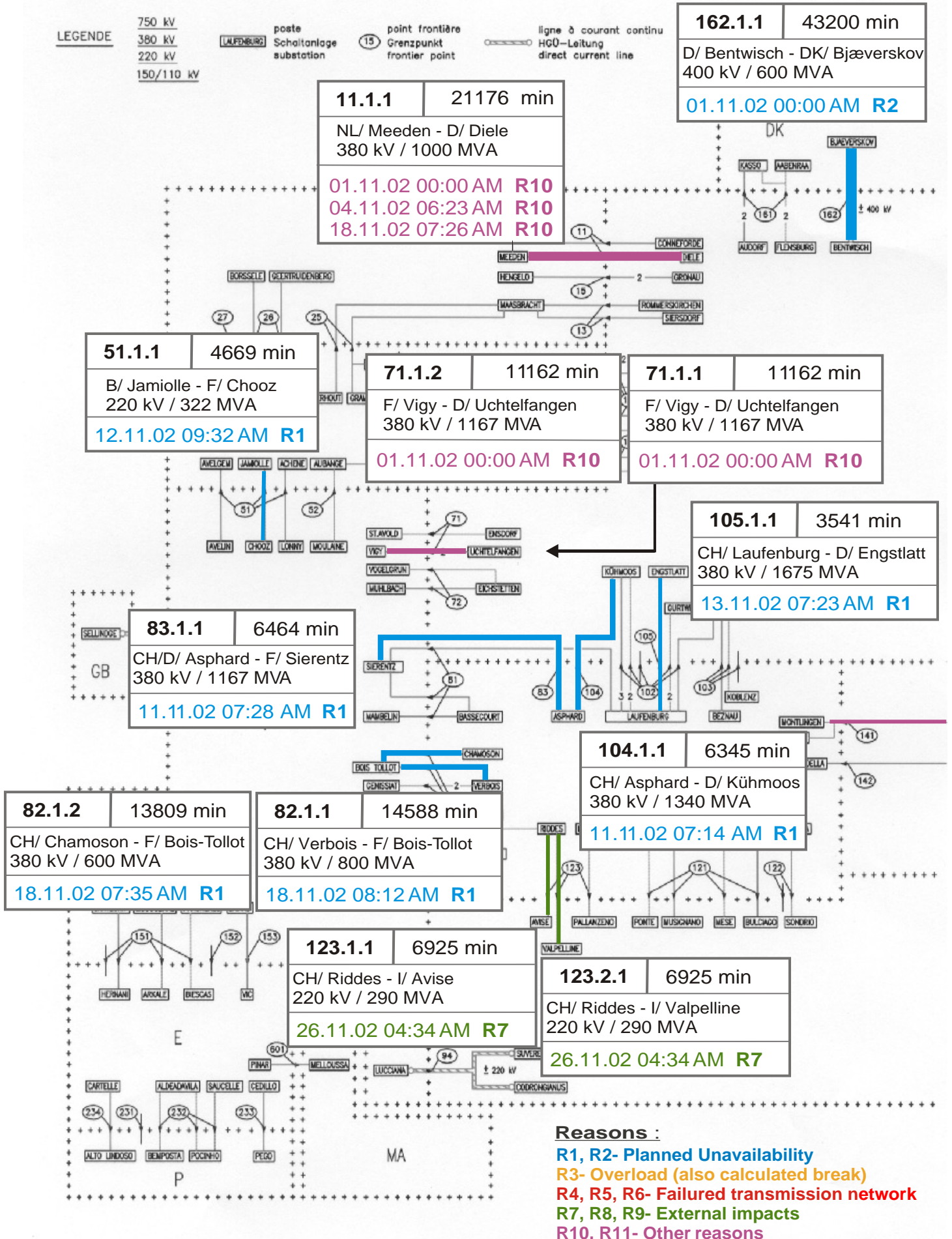
² YU = FRY + FYROM (Federal Republic of Yugoslavia and former Yugoslav Republic of Macedonia)

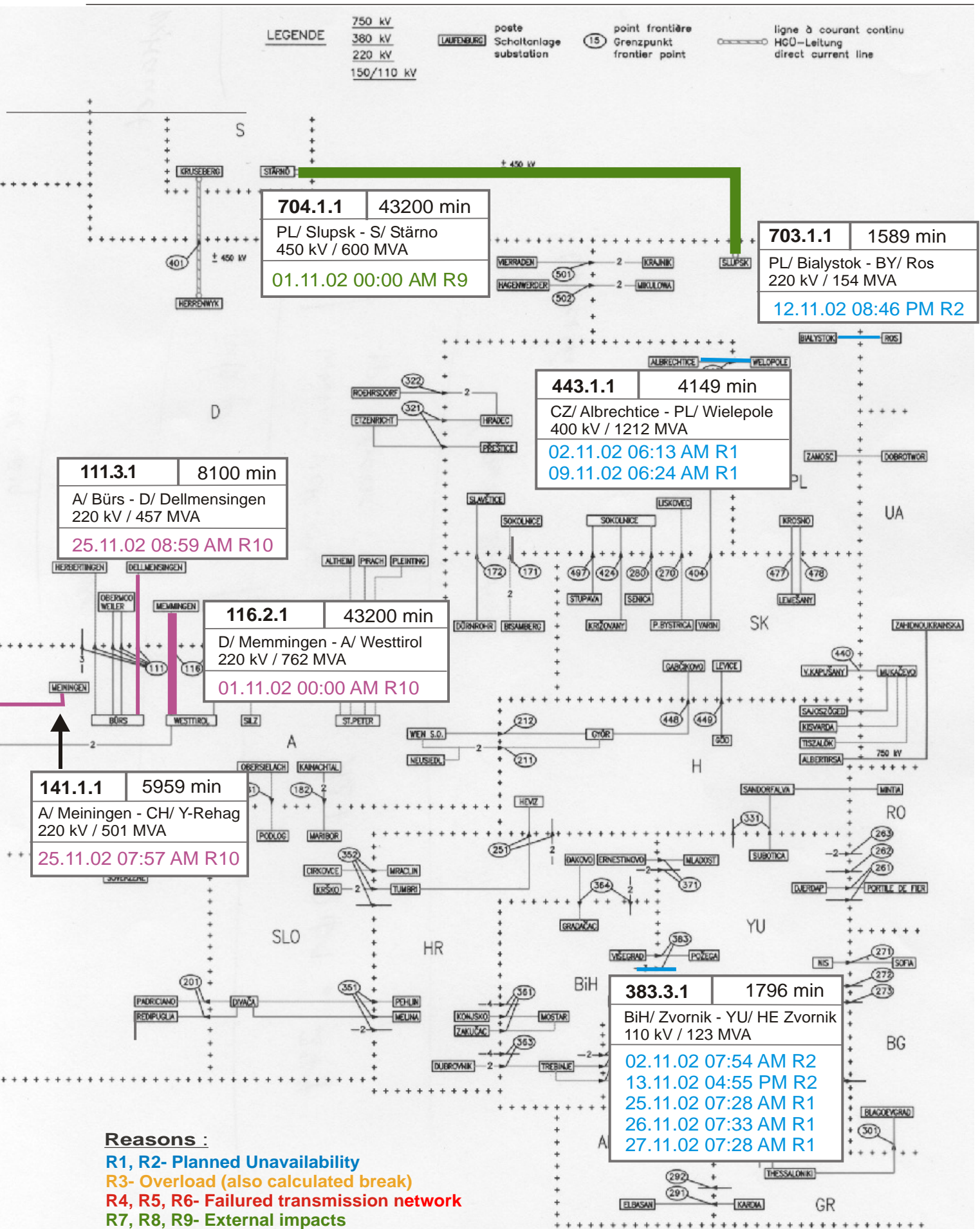


* YU = FRY + FYROM (Federal Republic of Yugoslavia and Former Yugoslav Republic of Macedonia)



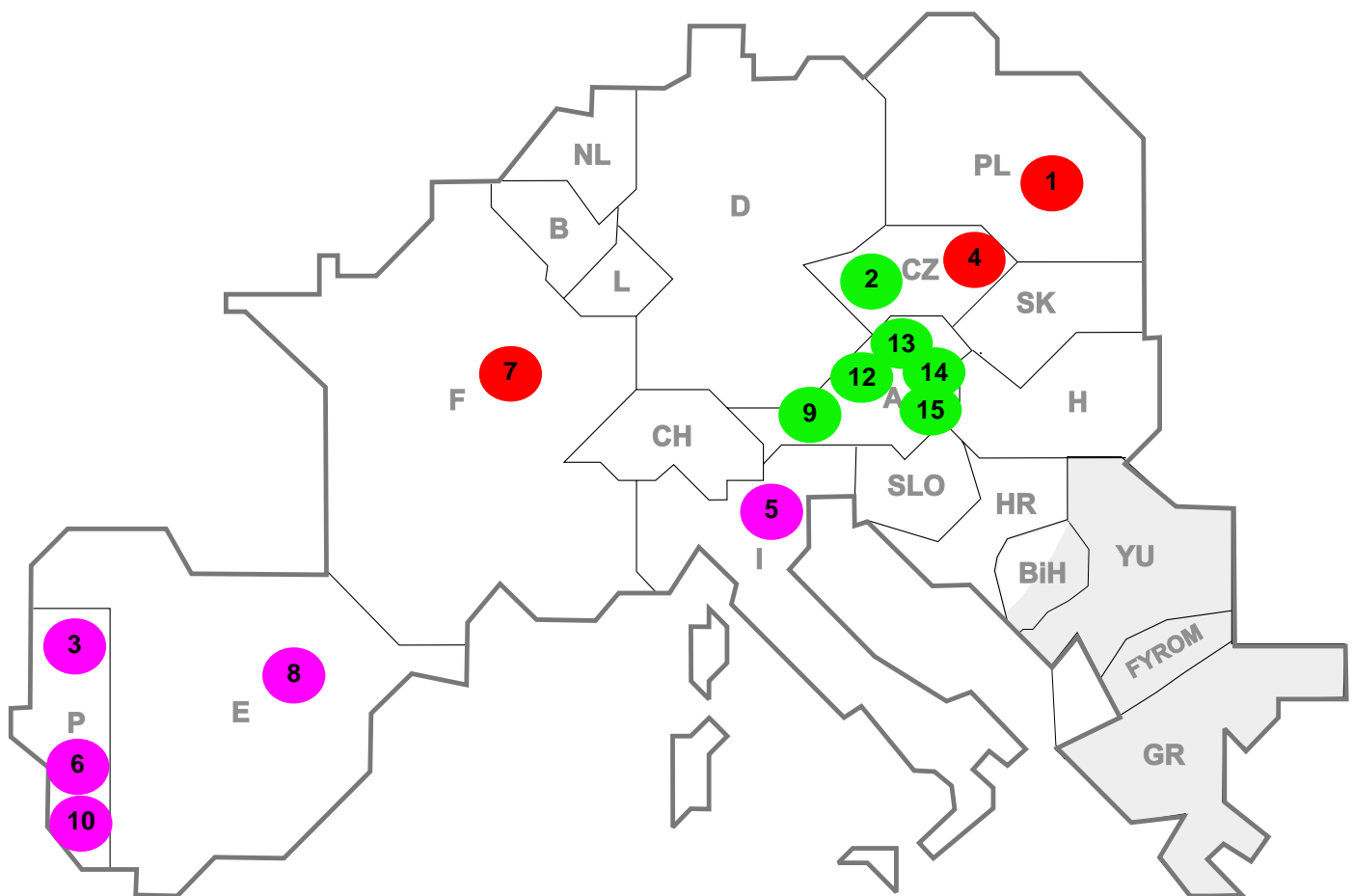






Reasons :

- R1, R2- Planned Unavailability
- R3- Overload (also calculated break)
- R4, R5, R6- Failed transmission network
- R7, R8, R9- External impacts
- R10, R11- Other reasons



Reasons:

R3 **Overload**

R7, R8, R9 **External impacts (animals...)**

R4, R5, R6 **Failure in the transmission network**

R10, R11 **Other reasons**

Nbr	Country	Substation	Reason	Energie not supplied [MWh]	Total loss of power [MW]	Restoration time [min]	Equivalent time of interruption ¹
1	PL	Dobrzeń	R4	380	756	26	2,98
2	CZ	Nosovice	R7	70	0	60	0,00
3	P	Vermoim	R10	46	0	7	0,00
4	CZ	Tynec	R4	37	603	63	5,42
5	I	Castelluccia	R10	10	38	39	0,06
6	P	Ferro	R10	7	0	10	0,00
7	F	Cretaine	R4	3	25	7	0,03
8	E	Mangraners	R10	1	0	20	0,00
9	A	Tauern	R8	0	0	266	0,00
10	P	Lavos	R10	0	0	48	0,00
11	A	Ernstshofen	R9	0	0	110	0,00
12	A	Zell am Ziller	R7	0	0	302	0,00
13	A	Westtirol	R9	0	0	307	0,00
14	A	Weissenbach	R9	0	0	1457	0,00
15	A	Tauern	R9	0	0	1194	0,00

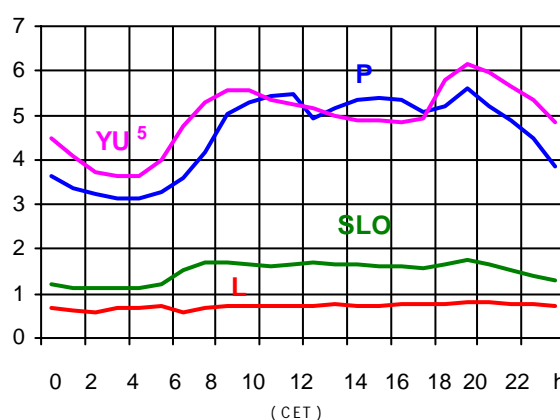
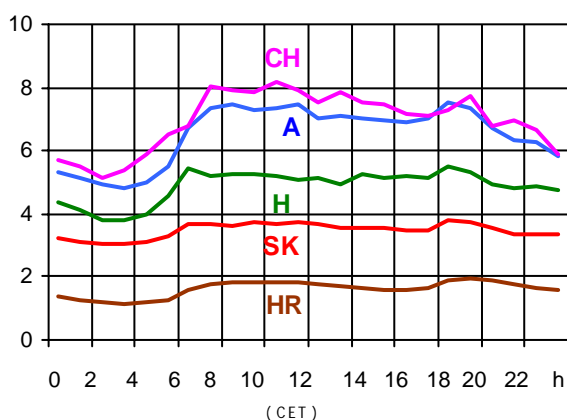
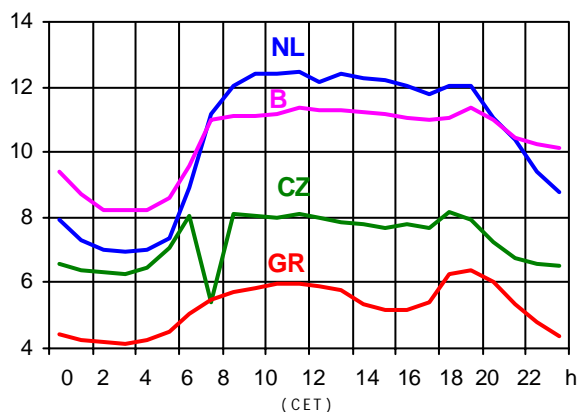
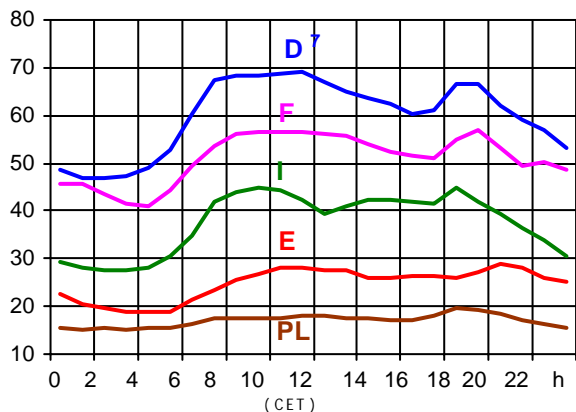
¹ (year [in min] * power loss) / consumption last 12 months

Control area	Prog_exp	Prog_imp	Prog_exp3	Prog_imp3	Prog_exp11	Prog_imp11
B	195869	967233	0	1173	417	1517
D	2015278	3508947	2618	4471	2588	8529
E	472237	946708	962	1400	653	1400
F	8466867	1065750	10836	1682	12902	1493
GR	161266	385322	201	452	201	590
I	42044	4564077	1	5971	134	6105
SLO	n.a.	n.a.	n.a.	n.a.	n.a.	n.a.
HR	85814	209069	297	322	276	416
YU	94069	738345	270	901	200	1236
NL	573671	1950894	1503	2795	560	2987
A	1195978	826483	2100	1248	2161	1162
P	105578	403677	0	468	296	605
CH	2486605	2167651	2480	3115	4749	2751
CZ	1867845	870206	2644	1253	2497	1325
H	739840	934056	1171	1263	1098	1485
PL	788562	10667	930	140	1849	215
SK	724070	109282	850	50	1039	250

- Control areas can differ from national borders (i.e. German block which includes parts of A, L and DK).
- Values are calculated on an hourly base (MWh).
- This values are not the provisional values entered in the VULCANUS system, but the definitive values after an eventual correction during the actual date.
- Prog_exp: Sum of all positive values of every hour of every border
- Prog_imp: Sum of all negative values of every hour of every border
- Prog_exp3: Sum of all positive values the third Wednesday from 02:00 to 03:00 a.m.
- Prog_imp3: Sum of all negative values the third Wednesday from 02:00 to 03:00 a.m.
- Prog_exp11: Sum of all positive values the third Wednesday from 10:00 to 11:00 a.m.
- Prog_imp11: Sum of all negative values the third Wednesday from 10:00 to 11:00 a.m.
- YU = FRY + FYROM (Federal Republic of Yugoslavia and Former Yugoslav Republic of Macedonia)

Consumption hourly load curves¹ on 16.10.02

Values in GW



Peak load on 3rd Wednesday¹

16.10.02	B	D	E	F	GR	I	SLO	HR	YU ⁵	L	NL	A	P	CH	CZ	H	PL	SK	UCTE
MW	11479	68900	29878	57949	6428	46385	1744	1961	6163	819	12478	7744	5594	8360	8165	5477	19803	3825	295852
Δ % ²	2,5	1,0	3,9	3,6	1,1	3,2	6,0	-0,3	7,1	-5,0	1,6	8,5	-1,2	0,9	6,1	0,3	3,8	4,5	3,5

Power produced in parallel operation³

16.10.02	B	D	E	F	GR	I	SLO	HR	YU ⁵	L	NL	A	P	CH	CZ	H	PL	SK	Others ⁴	UCTE
MW	9792	73800	26938	66845	5584	39050	1821	1818	4763	736	10316	6924	5034	9178	9644	4621	20256	4357	2345	301477

¹ Percentage as referred to total values in %

B	D	E	F	GR ⁶	I	SLO	HR	YU ⁵	L	NL	A	P	CH	CZ	H	PL	SK
100	91	94	97	91	100	95	100	96	99	90	82	87	100	100	100	100	100

² Variation as compared to corresponding month of the previous year

³ Including autoproduction

⁴ Denmark (Jutland)

⁵ YU = FRY + FYROM (Federal Republic of Yugoslavia and Former Yugoslav Republic of Macedonia)

⁶ The representativity of data referring to the whole country including the isolated systems of the Greek island is 91%

The representativity of data referring to the mainland interconnected system is 98%

⁷ Values estimated on the basis of former data from the German Federal Office for Statistics

Existing lines with towers for lines with 2 circuits mounted

	B	D	E	F	GR	I	SLO	HR	JIEL	L	NL	A	P	CH	CZ	H	PL	SK	CX	
201	204	52	200	2751	228	443	1707	200	140	121	205	1708	140	10	294	200	115	704	201	203
200	203	100	1707	2003	100	443	134	207	100	110	207	1019	175	22	222	1010	100	210	201	200

	F	I	SLO	HR	JIEL	L	NL	A	P	CH	CZ	H	PL	SK
B	2/2					2/-	-/4							
D	2/4					8/-	-/8	9/3		5/7	2/4			
E	2/2								3/2					
	F	3/3								5/5				
	GR	-/1			-/1									
		I	1/1					1/-		6/2				
			SLO	2/3				1/2						
				HR	7/3									
									JIEL					
									A	1/2	2/1	2/1		
													CZ	2/2
													H	2/2
													PL	2/2



Contact

Boulevard Saint-Michel, 15
 B-1040 Brussels – Belgium
 Tel +32 2 741 69 40 – Fax +32 2 741 69 49

info@ucte.org
 www.ucte.org