



July 2002

Monthly provisional values
union for the co-ordination of transmission of electricity

Table of contents		Page
1	Electricity supply situation of the countries	2
2	Physical energy flows	3
3	Monthly consumption	4
4	Monthly consumption variation	5
5	Consumption of last 12 months	6
6	Variation of the last 12 months' consumption	7
7	Load flows (night)	8
8	Load flows (day)	9
9	Unavailability of international tie lines (major events)	10
10	Network reliability (major events)	12
11	Scheduled exchanges	13
12	Load on the 3 rd Wednesday	14

1

Electricity supply situation of the countries

July 2002

Countries	B	D	E	F	GR	I	SLO	HR	YU ⁴	L	NL	A	P	CH	CZ	H	PL	SK	UCTE
Net production in GWh¹																			
Hy	104	1815	1941	4418	367	5105	256	259	685	87	0	2965	399	4285	166	17	243	369	23481
Tn	3576	12629	5461	32900	-	-	485	0	0	0	333	0	0	1809	1670	912	0	1222	60997
Tc	2322	23561	11087	2270	4123	19908	296	555	2190	285	7015	483	3085	198	3472	1507	10097	567	93021
Total	6002 ²	38005 ²	18489 ²	39588	4490 ²	25013	1037	814 ²	2875	372	7348 ²	3448	3484 ²	6292 ²	5308 ²	2436 ²	10340 ²	2158	177499 ²
Exchange balance in GWh																			
Imp. = +	459	737	576	-5608	404	4020	-56	386	188	239	1496	517	96	-1640	-1188	590	-311	-195	710
Exp. = -																			
Consumption of pumps in GWh																			
	122	402	700	605	77	892	0	11	52	112	0	77	78	310	44	0	159	17	3658
Consumption in GWh¹																			
monthly																			
	6339	38340	18365	33375	4817	28141	981	1189	3011	499	8844	3888	3502	4342	4076	3026	9870	1946	174551
Δ ³ [%]	3,0	0,3	4,1	2,6	3,5	3,8	9,4	6,0	1,4	3,1	2,5	-6,4	4,8	0,0	3,1	4,0	0,2	3,8	2,2
last 12 months																			
	83143	497061	210054	438994	47356	308761	11322	14890	44951	6031	109244	51532	40566	58334	58378	37103	133311	25979	2177010
Δ ³ [%]	-0,4	0,3	4,7	2,4	7,7	2,1	6,6	7,5	3,4	3,3	4,4	-2,2	4,1	2,0	0,9	2,5	-1,4	2,1	1,9
Energy capability factor																			
	-	1,00	-	-	0,64	0,84	0,92	0,80	0,67	-	-	-	0,22	0,94	-	-	-	1,27	0,9

¹ Percentage as referred to total values in %

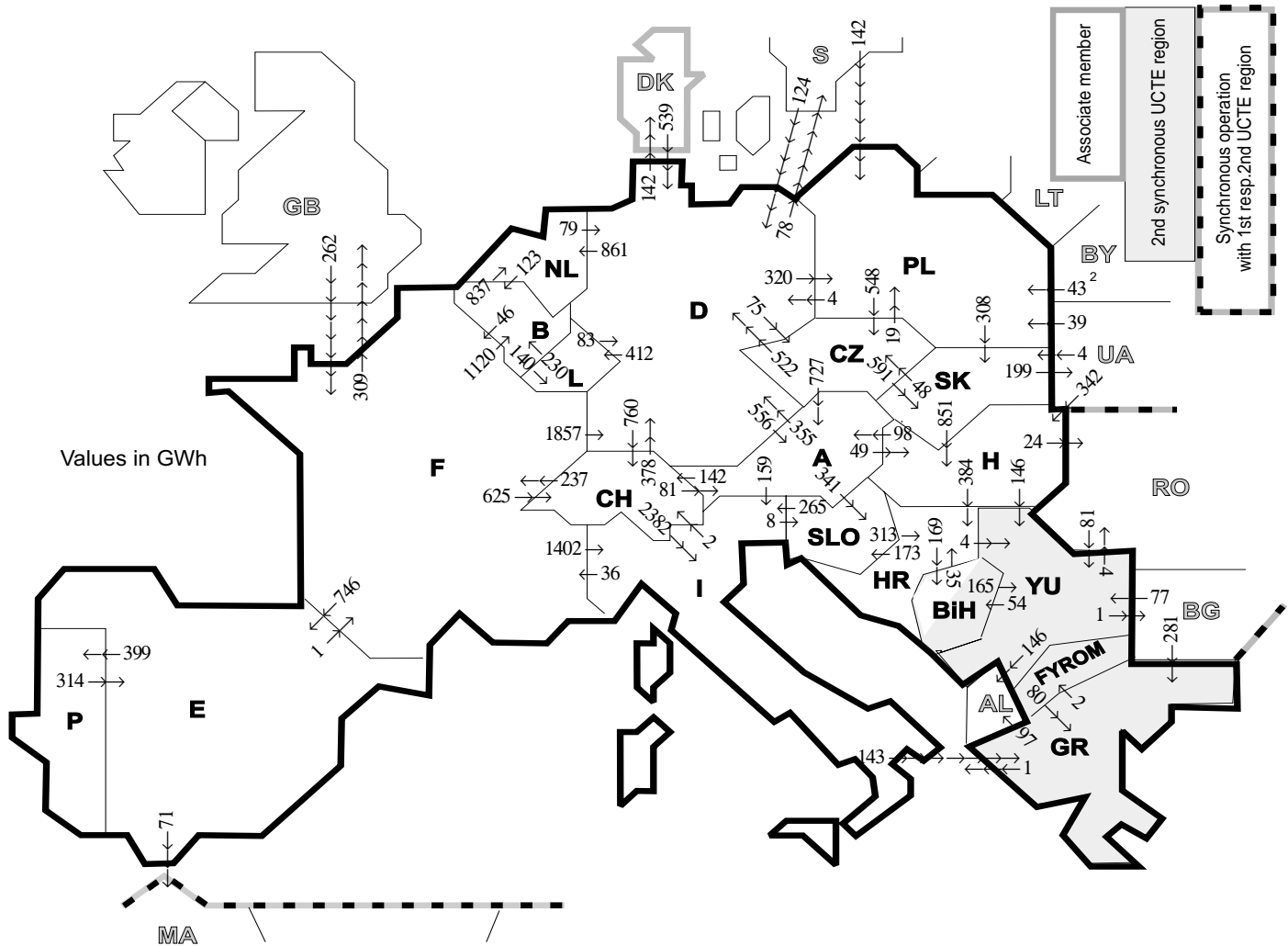
Countries	B	D	E	F	GR ⁶	I	SLO	HR	YU ⁴	L	NL	A	P	CH	CZ	H	PL	SK
Production	100	93	94	97	91	100	95	100	96	98	100	84	91	100	100	100	100	100
Consumption	100	93	94	97	91	100	95	100	96	99	100	90	91	100	100	100	100	100

² Including deliveries from industry

³ Variation as compared to corresponding period of the previous year and representativity 100%

⁴ YU = FRY + FYROM (Federal Republic of Yugoslavia and Former Yugoslav Republic of Macedonia)

⁵ The representativity of data referring to the whole country including the isolated systems of the Greek island is 91%. The representativity of data referring to the mainland interconnected system is 98%.



Exporting countries	Importing countries																				Σ Export	
	B	D	E	F	GR	I	SLO	HR	BiH	YU	L	NL	A	P	CH	CZ	H	PL	SK	III ¹		
B	-	-	-	46	-	-	-	-	-	-	140	837	-	-	-	-	-	-	-	-	-	1023
D	-	-	-	0	-	-	-	-	-	-	412	861	556	-	760	75	-	320	-	220	-	3204
E	-	-	-	1	-	-	-	-	-	-	-	-	-	399	-	-	-	-	-	-	71	471
F	1120	1857	746	-	-	1402	-	-	-	-	-	-	-	-	625	-	-	-	-	-	309	6059
GR	-	-	-	-	-	1	-	-	-	2	-	-	-	-	-	-	-	-	-	-	97	100
I	-	-	-	36	143	-	8	-	-	-	-	-	0	-	2	-	-	-	-	-	-	189
SLO	-	-	-	-	-	265	-	313	-	-	-	-	0	-	-	-	-	-	-	-	-	578
HR	-	-	-	-	-	-	173	-	169	4	-	-	-	-	-	-	0	-	-	-	-	346
BiH	-	-	-	-	-	-	-	35	-	165	-	-	-	-	-	-	-	-	-	-	-	200
YU	-	-	-	-	80	-	-	0	54	-	-	-	-	-	-	-	0	-	-	151	-	285
L	230	83	-	-	-	-	-	-	-	-	-	-	-	-	-	-	-	-	-	-	-	313
NL	123	79	-	-	-	-	-	-	-	-	-	-	-	-	-	-	-	-	-	-	-	202
A	-	355	-	-	-	159	341	-	-	-	-	-	-	-	142	0	49	-	-	-	-	1046
P	-	-	314	-	-	-	-	-	-	-	-	-	-	-	-	-	-	-	-	-	-	314
CH	-	378	-	237	-	2382	-	-	-	-	81	-	-	-	-	-	-	-	-	-	-	3078
CZ	-	522	-	-	-	-	-	-	-	-	-	-	727	-	-	-	-	19	591	-	-	1859
H	-	-	-	-	-	-	-	384	-	146	-	-	98	-	-	-	-	0	24	-	-	652
PL	-	4	-	-	-	-	-	-	-	-	-	-	-	-	-	548	-	308	0	-	-	860
SK	-	-	-	-	-	-	-	-	-	-	-	-	-	-	548	851	0	-	199	-	-	1098
III ¹	-	663	0	262	281	-	-	-	-	158	-	-	-	-	-	-	342	224	4	-	-	1934
Σ Import	1473	3941	1060	582	504	4209	522	732	223	475	552	1698	1462	399	1529	671	1242	563	903	1071	23811	

Sum of physical energy flows between UCTE countries = 20806 GWh

Total physical energy flows = 23811 GWh

¹ III = Third countries: Albania, Belarus, Bulgaria, Denmark, Great Britain, Morocco, Rumania, Sweden and Ukraine

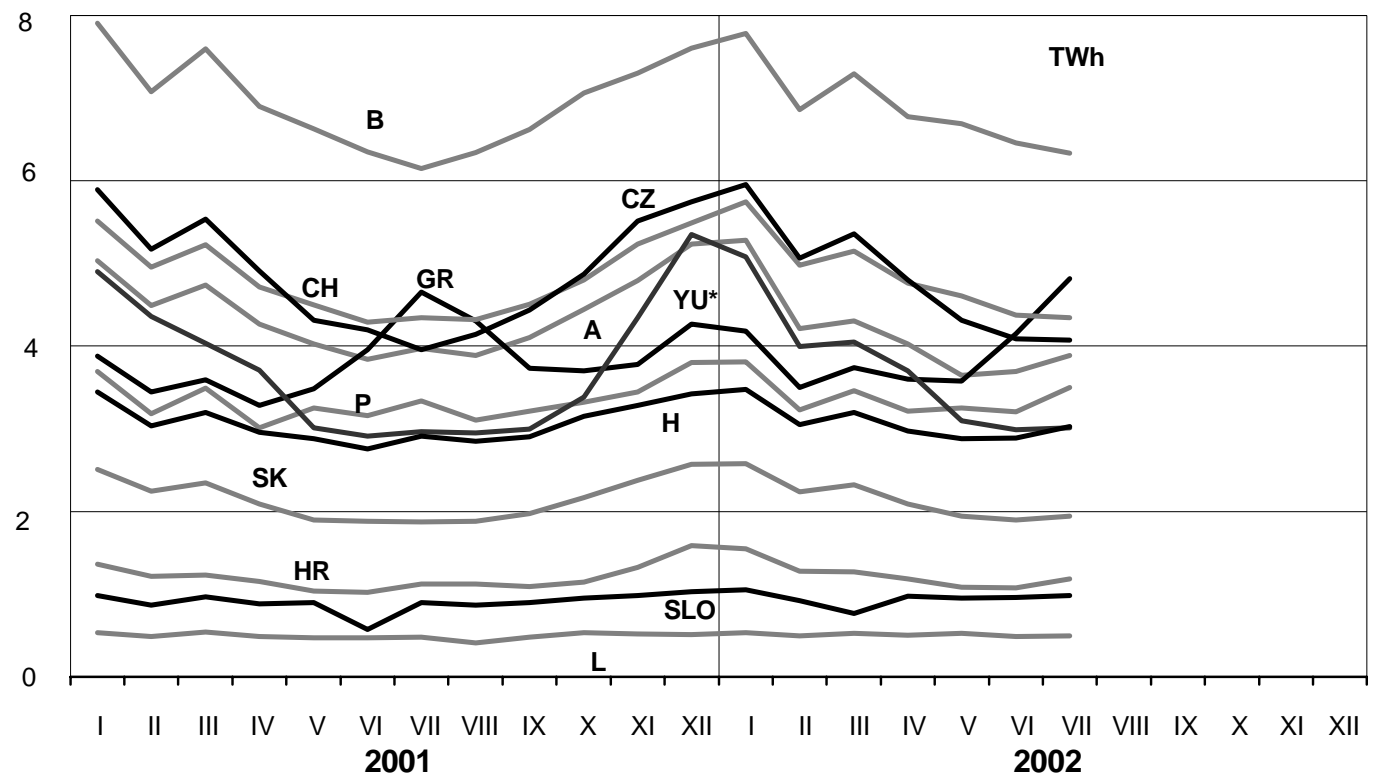
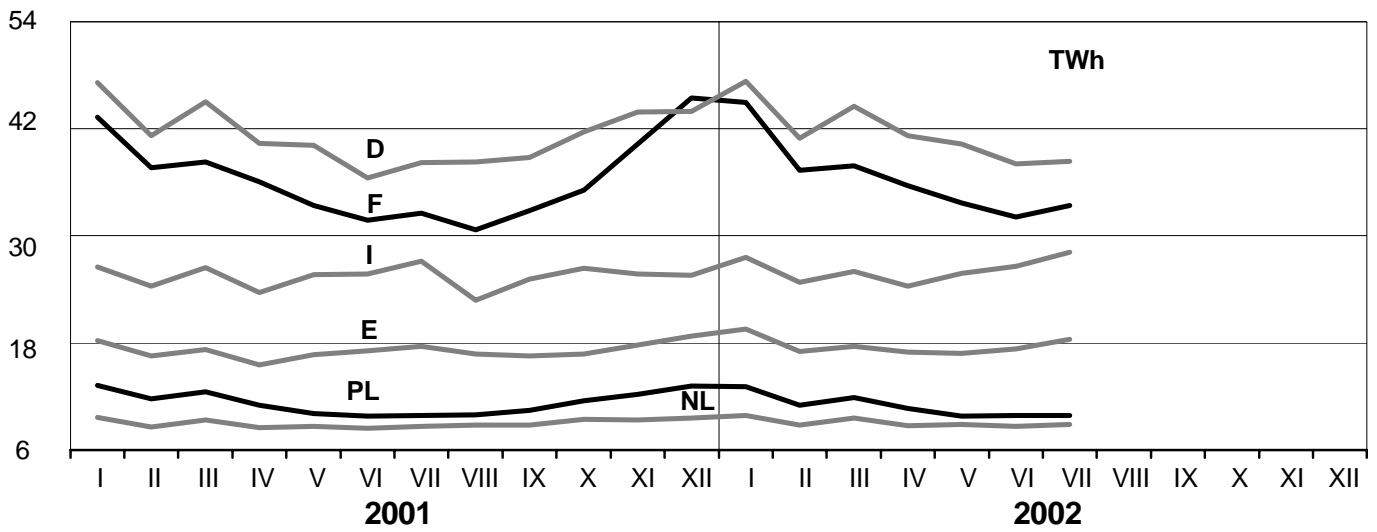
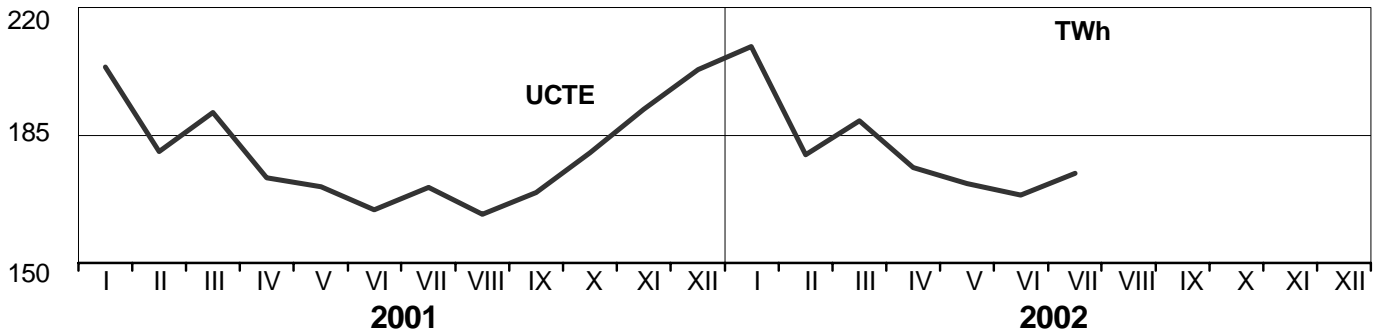
² Corresponds to the supply of a passive island in Poland with BY.

These physical energy flows were measured on the cross-frontier transmission lines (≥ 110 kV) listed in table 9 of the Statistical Yearbook. These values may differ from the official statistics and the exchange balances in chapter 1.

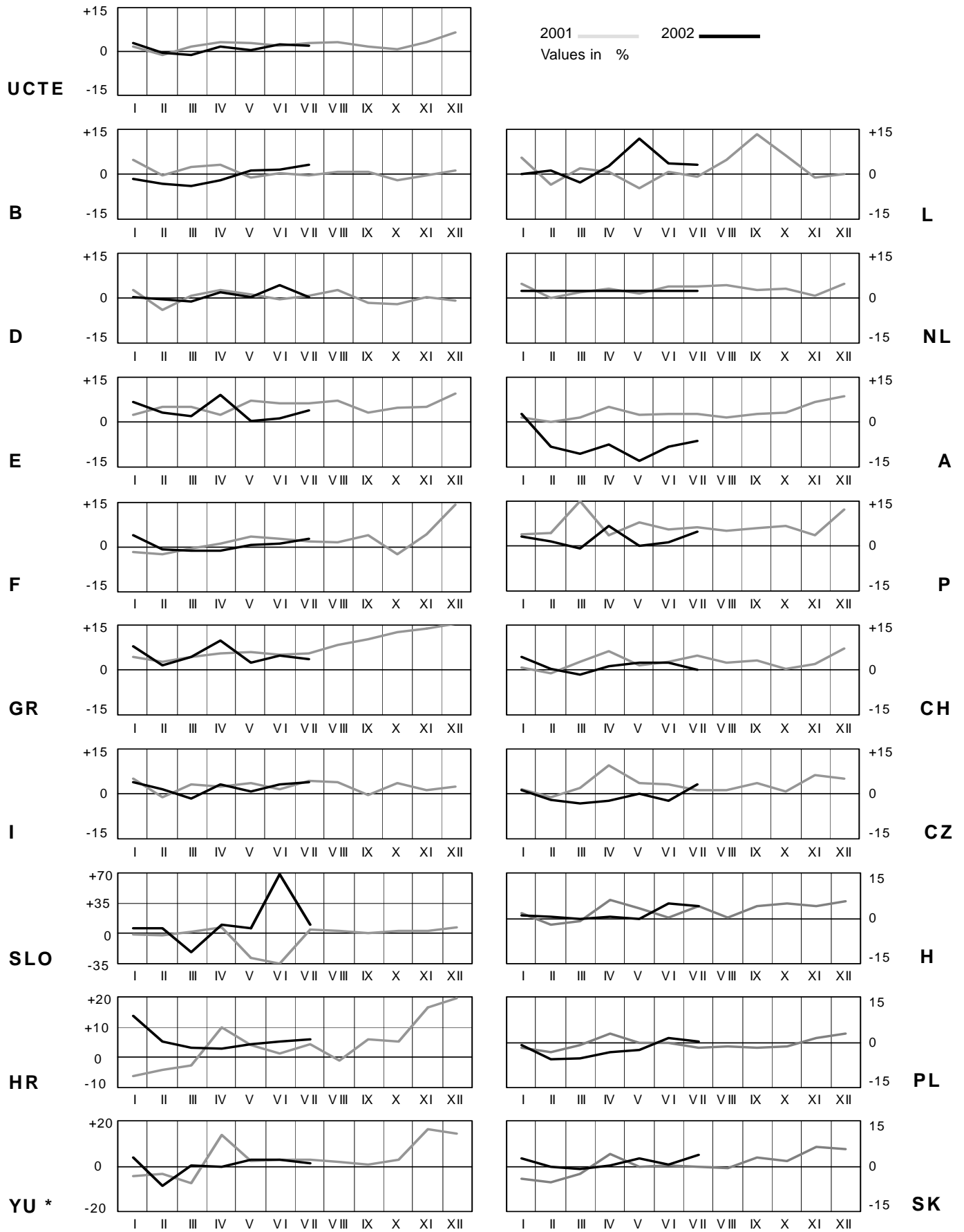
3

Monthly consumption

July 2002



* YU = FRY + FYROM (Federal Republic of Yugoslavia and Former Yugoslav Republic of Macedonia)

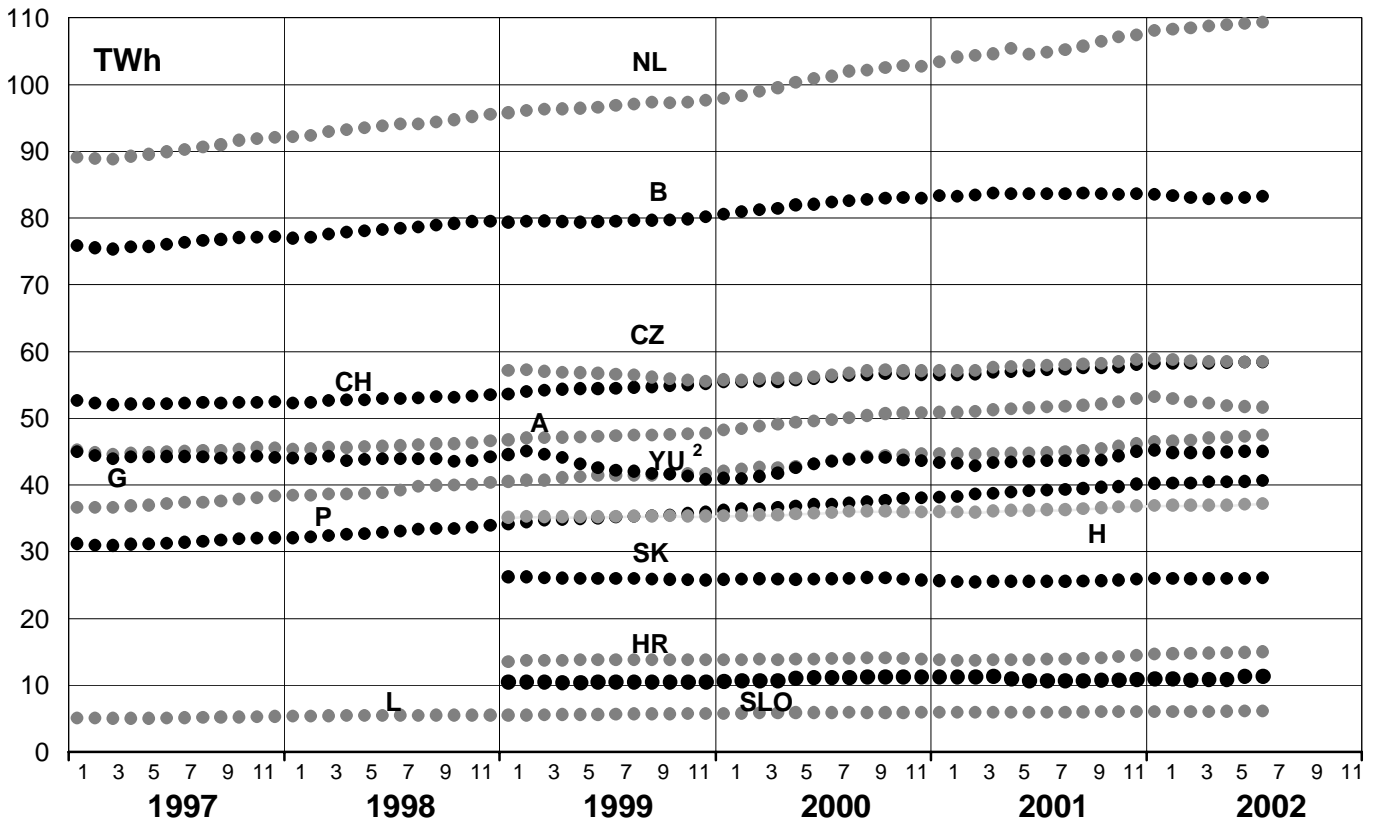
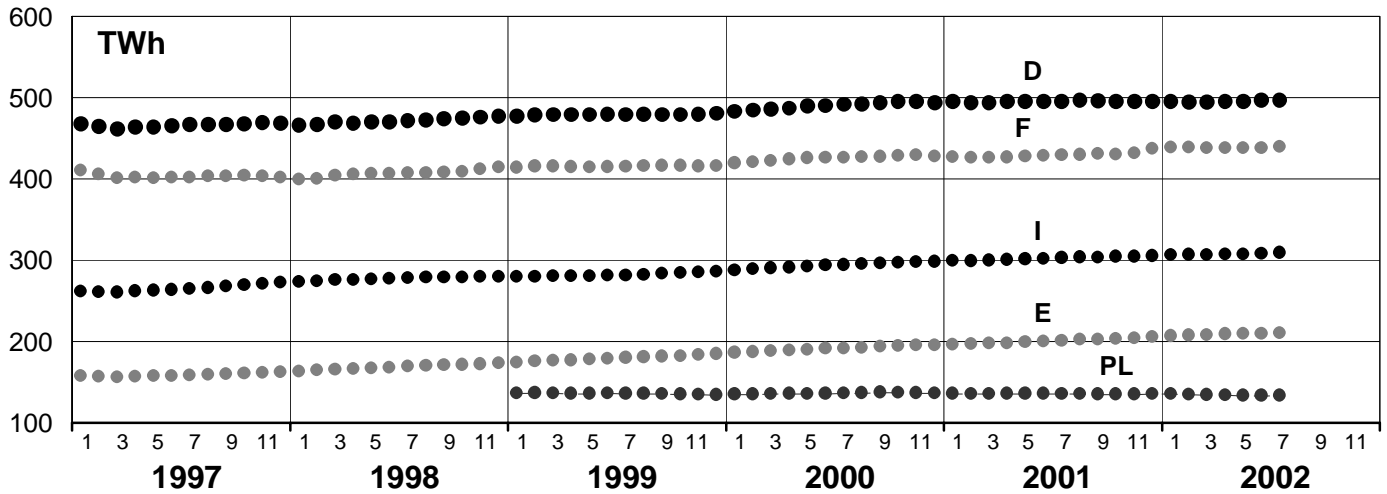
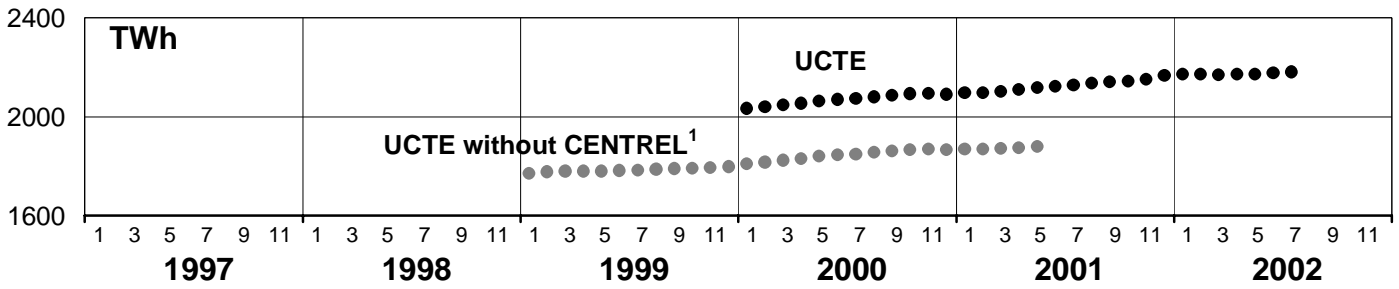


* YU = FRY + FYROM (Federal Republic of Yugoslavia and Former Yugoslav Republic of Macedonia)

5

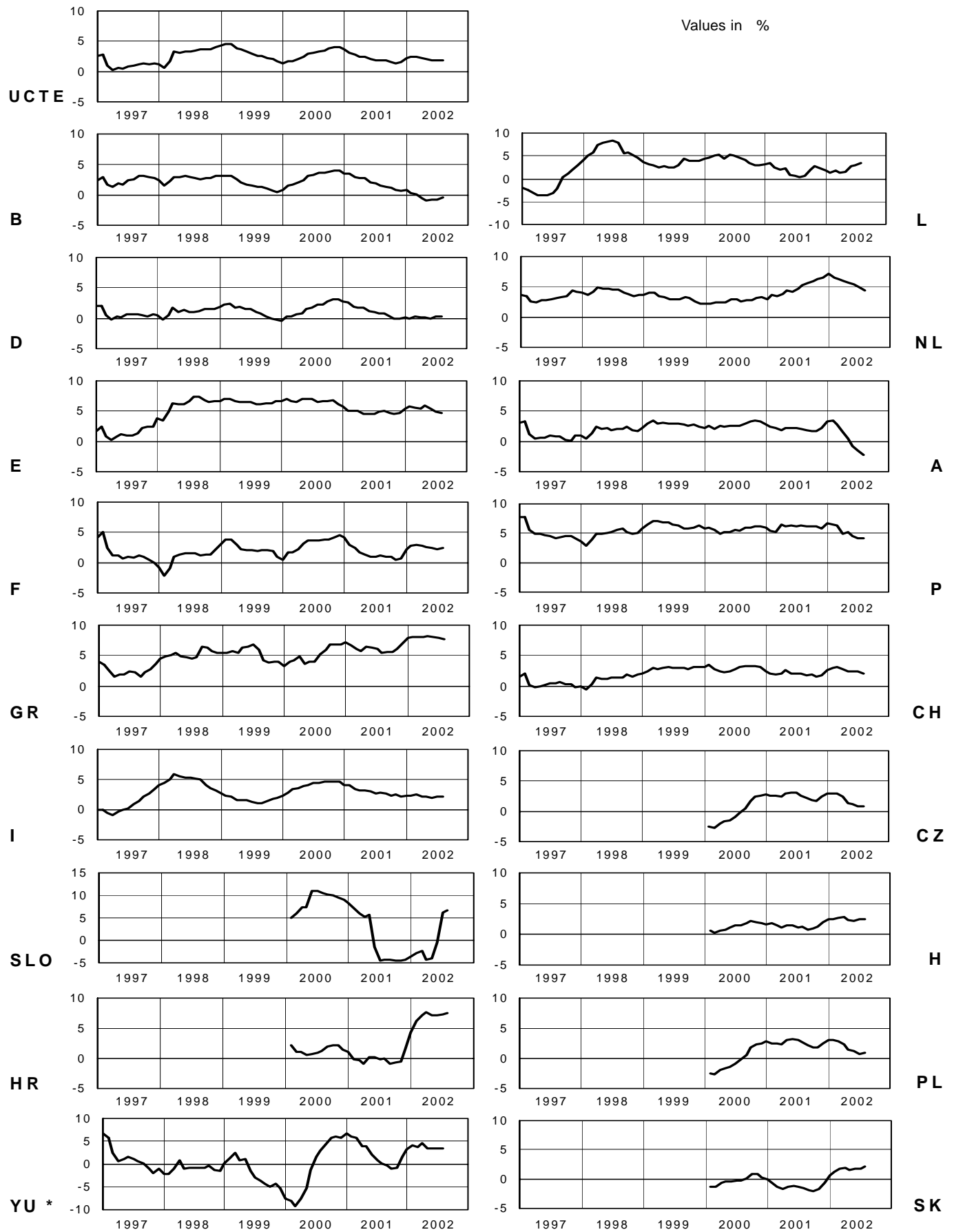
Consumption of last 12 months

July 2002

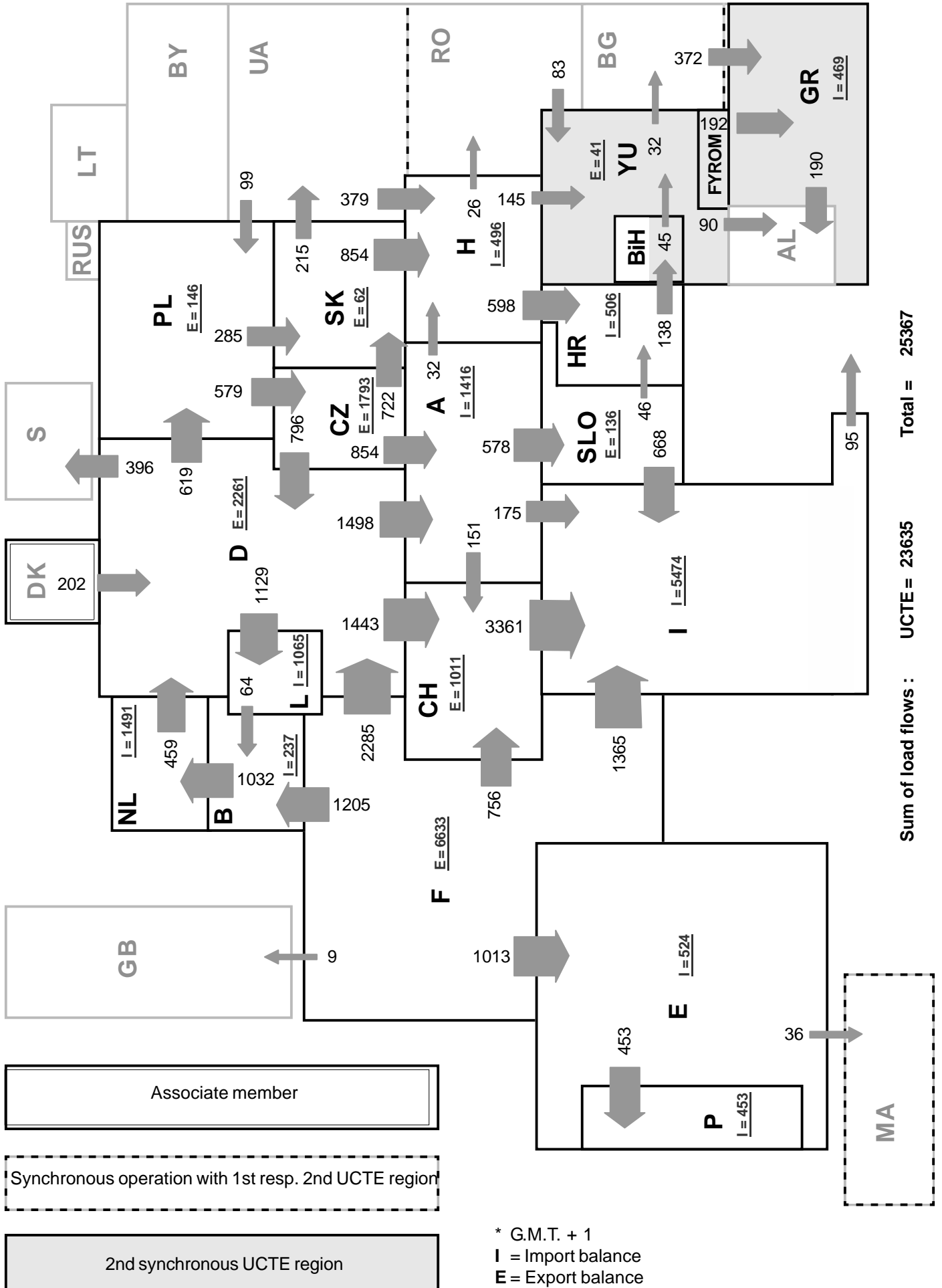


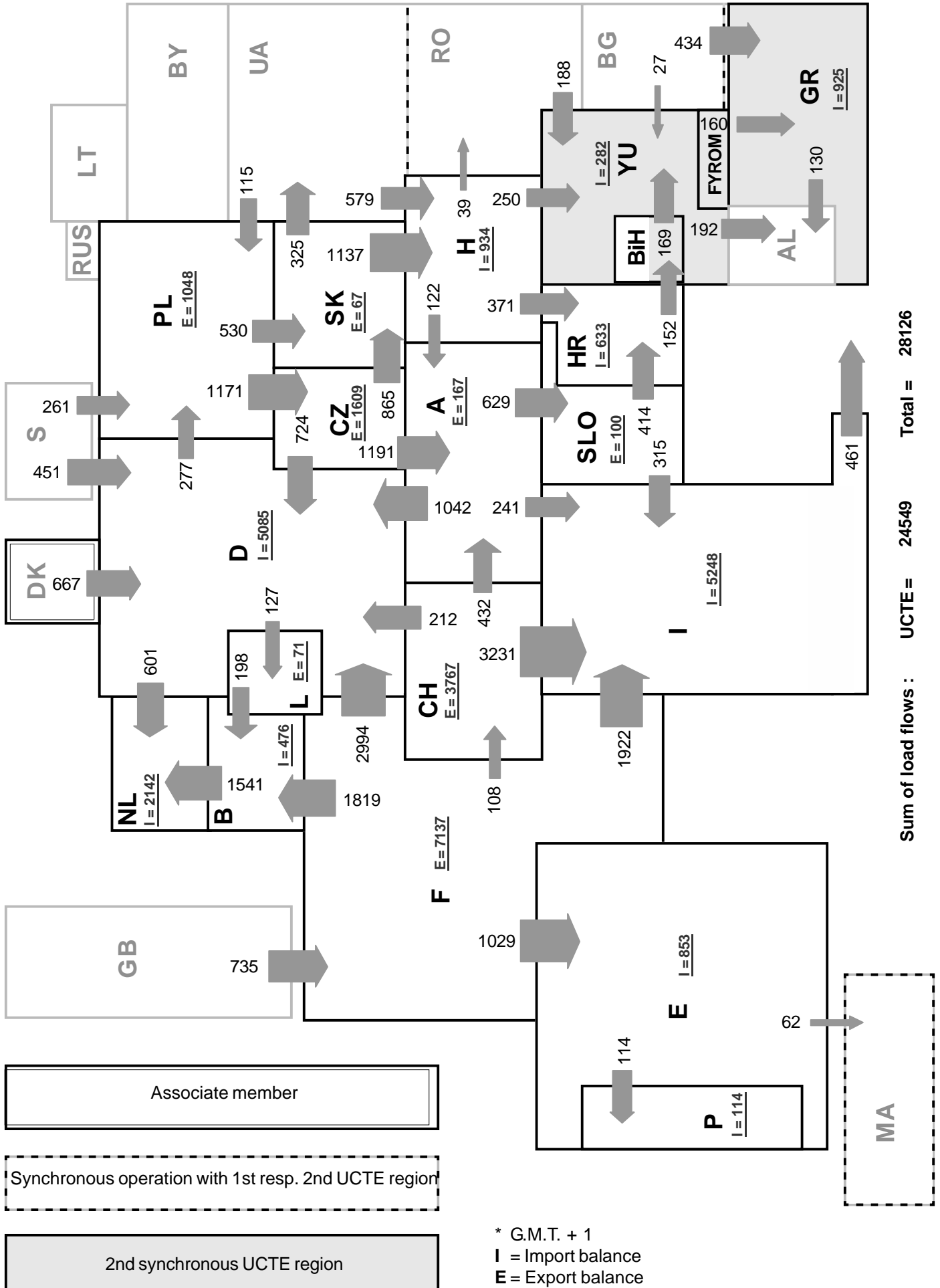
¹ CENTREL countries CZ, H, PL, SK member of UCTE from May 2001

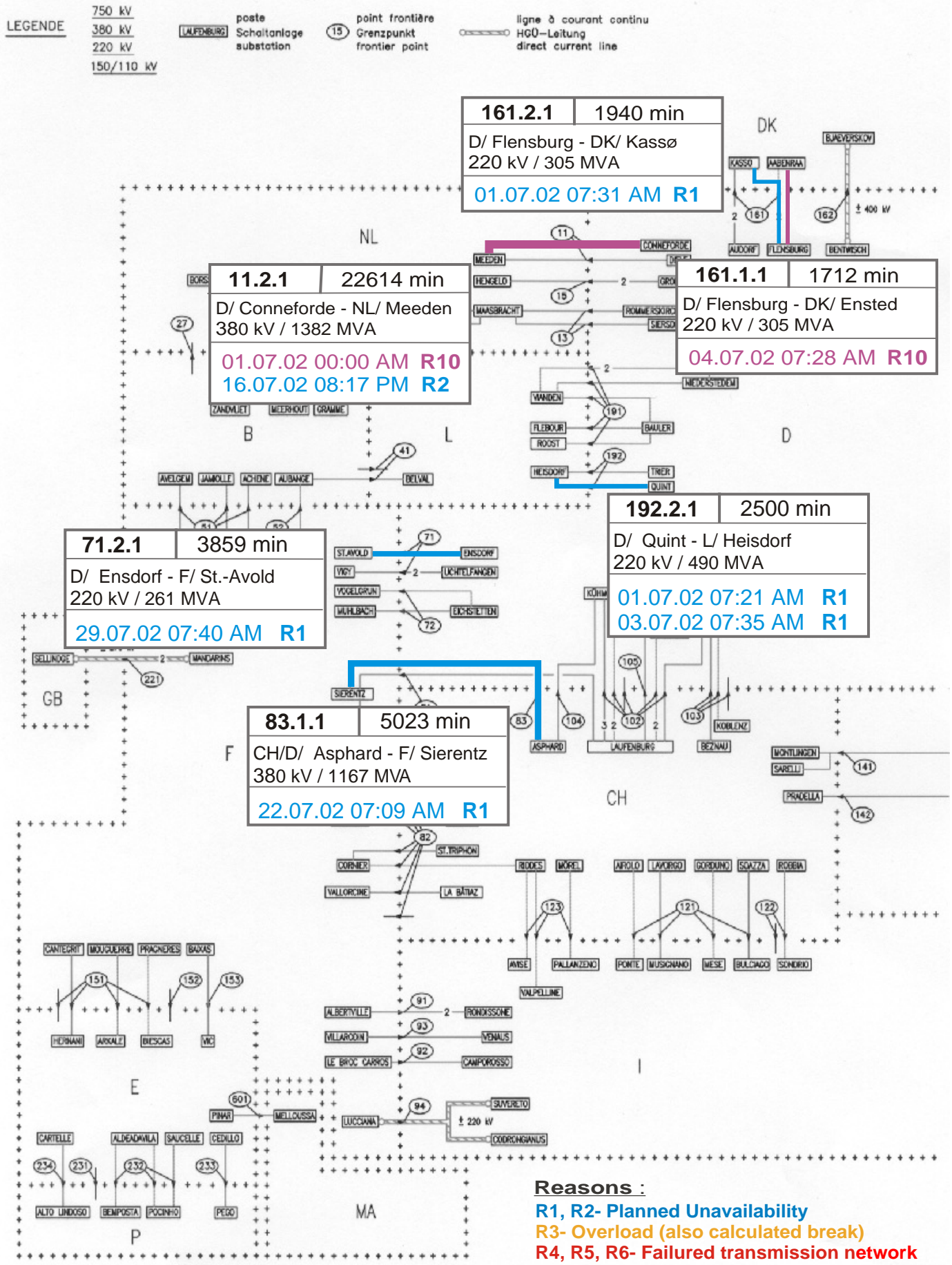
² YU = FRY + FYROM (Federal Republic of Yugoslavia and Former Yugoslav Republic of Macedonia)



* YU = FRY + FYROM (Federal Republic of Yugoslavia and Former Yugoslav Republic of Macedonia)

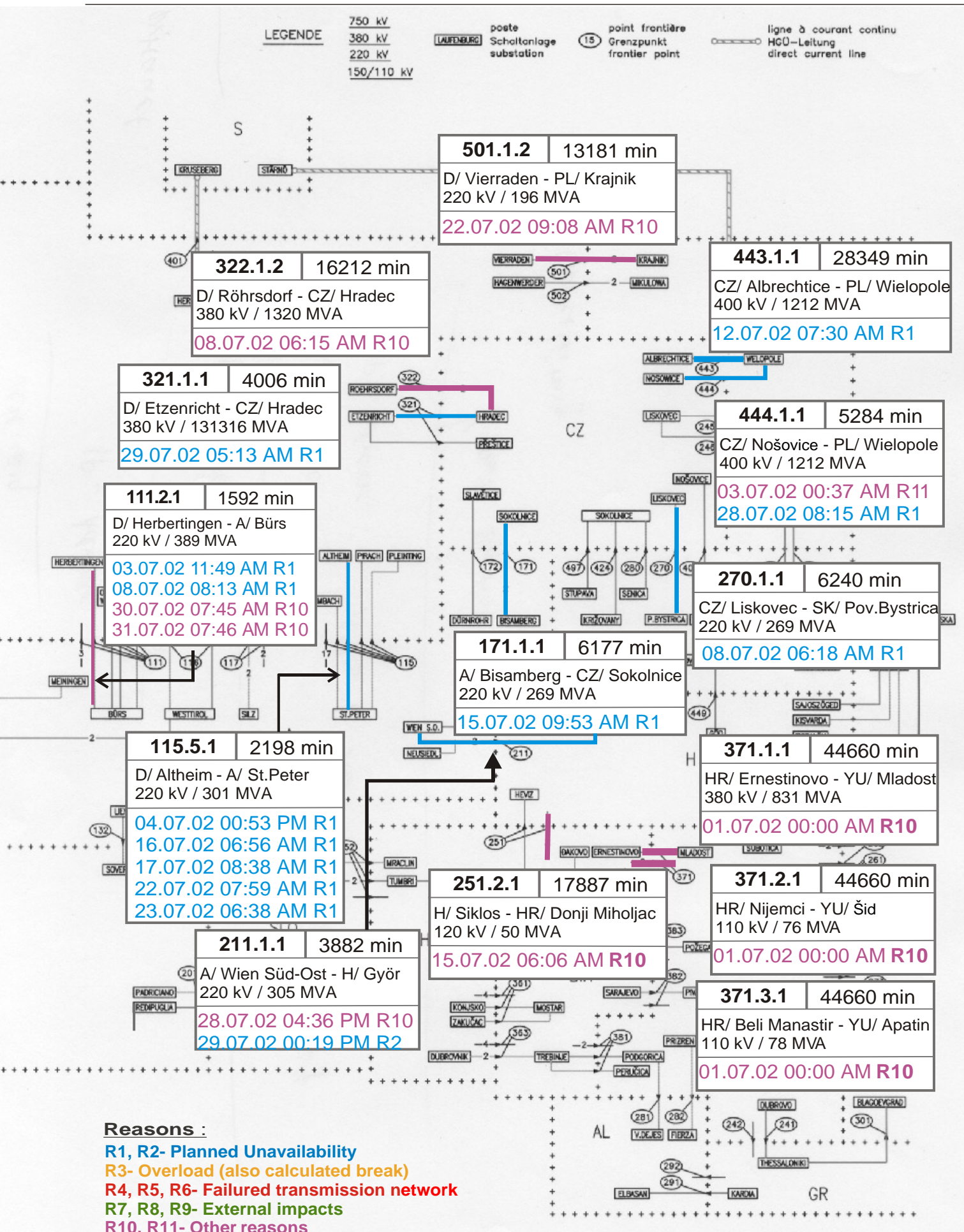






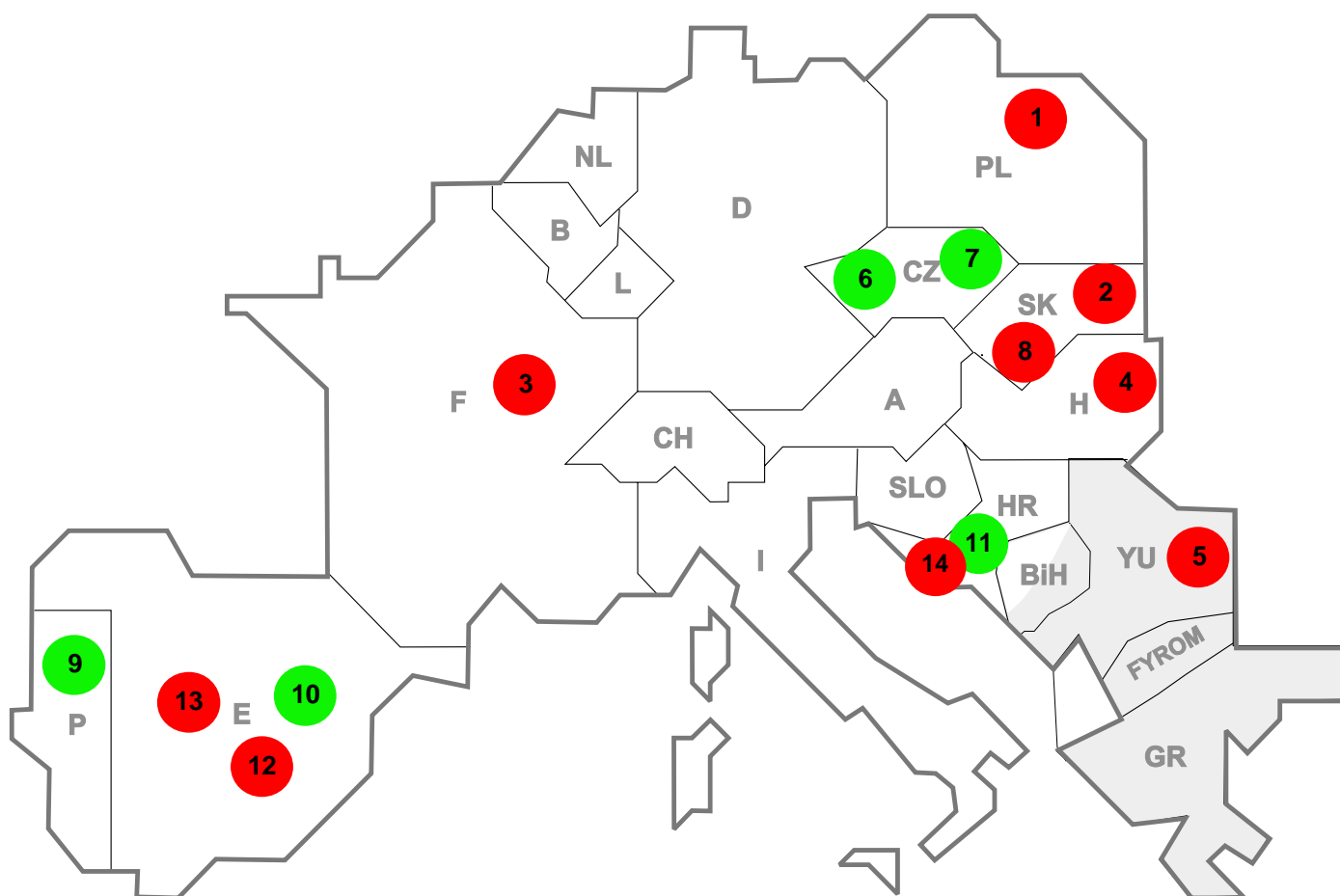
Reasons :

- R1, R2- Planned Unavailability
- R3- Overload (also calculated break)
- R4, R5, R6- Failed transmission network
- R7, R8, R9- External impacts
- R10, R11- Other reasons



Reasons :

- R1, R2- Planned Unavailability
- R3- Overload (also calculated break)
- R4, R5, R6- Failed transmission network
- R7, R8, R9- External impacts
- R10, R11- Other reasons



Reasons:

R3 **Overload**

R7, R8, R9 **External impacts (animals...)**

R4, R5, R6 **Failure in the transmission network**

R10, R11 **Other reasons**

nbr	Country	Substation	Reason	Energie not supplied [MWh]	Total loss of power [MW]	Restoration time [min]	Equivalent time of interruption ¹
1	PL	Slupsk	R6	347	1673	514	6,60
2	SK	L. Mara	R6	237	185	2	3,74
3	F	Villevaude	R4	105	460	27	0,55
4	H	Paks	R5	42	43	45	0,61
5	YU	Subotica	R4	35	0	9	0,00
6	CZ	Sokolnice	R8	14	0	8	0,00
7	CZ	Krasikov	R8	13	0	8	0,00
8	SK	H. Zdana	R6	3	184	1	3,72
9	P	Lavos	R7	2	0	5	0,00
10	E	Escalona	R8	0	61	7	0,15
11	HR	Brinje	R7	0	0	2909	0,00
12	E	Gurrea	R4	0	15	14	0,04
13	E	Vitoria	R6	0	8	1	0,02
14	HR	Brinje	R5	0	0	2909	0,00

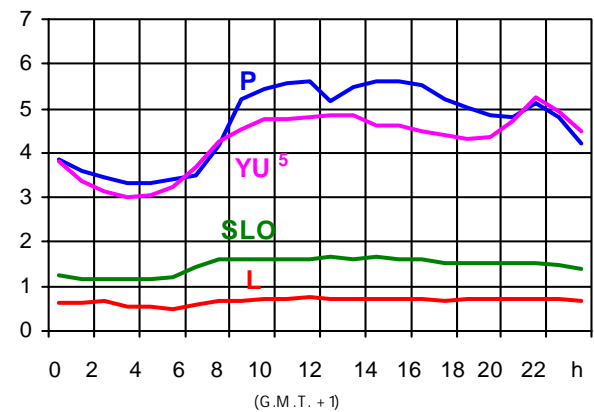
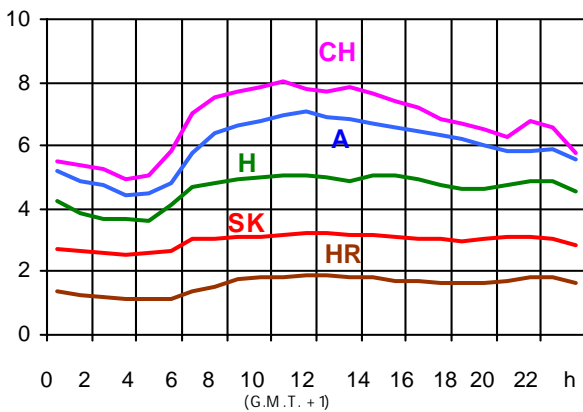
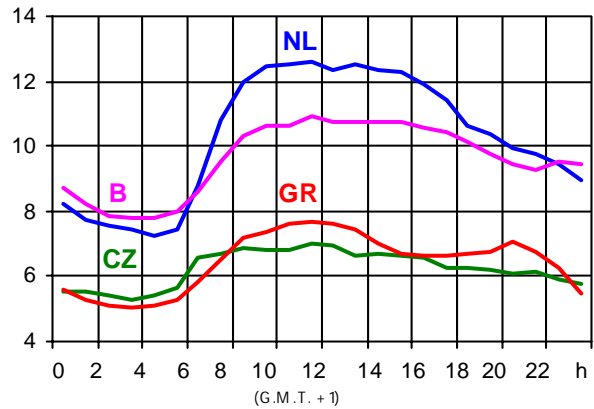
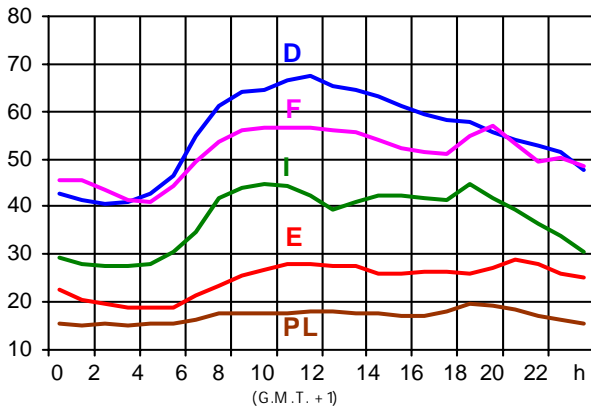
¹ (year [in min] * power loss) / consumption last 12 months

Control area	Prog_exp	Prog_imp	Prog_exp3	Prog_imp3	Prog_exp11	Prog_imp11
B	285935	730125	269	620	393	1075
D	2293718	2701609	2646	2294	2936	6122
E	197146	764815	472	1000	201	1000
F	6870409	1372508	7902	1312	8630	1611
GR	53970	447495	110	471	50	951
I	189022	4208625	95	5569	476	5724
SLO	n.a.	n.a.	n.a.	n.a.	n.a.	n.a.
HR	141958	531482	146	680	170	756
YU	269674	455585	411	524	591	911
NL	485233	1985507	1080	2574	657	2827
A	919942	1435743	1863	1094	1941	1419
P	42579	139516	0	426	0	139
CH	3214825	1672808	3078	2058	6317	2540
CZ	1481403	247387	2198	383	2167	473
H	541840	1143718	673	1193	750	1725
PL	452002	181834	225	99	1230	377
SK	551743	330318	490	402	840	642

- Control areas can differ from national borders (i.e. German block which includes parts of A, L and DK).
- Values are calculated on an hourly base (MWh).
- This values are not the provisional values entered in the VULCANUS system, but the definitive values after an eventual correction during the actual date.
- Prog_exp: Sum of all positive values of every hour of every border
- Prog_imp: Sum of all negative values of every hour of every border
- Prog_exp3: Sum of all positive values the third Wednesday from 02:00 to 03:00 a.m.
- Prog_imp3: Sum of all negative values the third Wednesday from 02:00 to 03:00 a.m.
- Prog_exp11: Sum of all positive values the third Wednesday from 10:00 to 11:00 a.m.
- Prog_imp11: Sum of all negative values the third Wednesday from 10:00 to 11:00 a.m.
- YU = FRY + FYROM (Federal Republic of Yugoslavia and Former Yugoslav Republic of Macedonia)

Consumption hourly load curves¹ on 19.06.02

Values in GW



Peak load on 3rd Wednesday¹

19.06.02	B	D	E	F	GR	I	SLO	HR	YU ⁵	L	NL	A	P	CH	CZ	H	PL	SK	UCTE
MW	11049	67500	30888	54814	7679	50551	1672	1919	5247	742	12587	7100	5658	8200	6977	5094	16157	3209	294212
Δ % ²	1,1	1,0	3,9	2,9	11,8	12,9	13,7	8,1	5,8	3,8	2,7	5,7	-2,6	1,4	1,7	3,4	-0,2	-0,4	4,2

Power produced in parallel operation³

19.06.02	B	D	E	F	GR	I	SLO	HR	YU ⁵	L	NL	A	P	CH	CZ	H	PL	SK	Others ⁴	UCTE
MW	9610	74000	28498	63649	7077	43668	2061	1861	4202	730	10408	6955	5252	11116	8805	4222	17423	3390	2055	302927

¹ Percentage as referred to total values in %

B	D	E	F	GR ⁶	I	SLO	HR	YU ⁵	L	NL	A	P	CH	CZ	H	PL	SK
100	91	94	97	91	100	95	100	96	99	90	82	87	100	100	100	100	100

² Variation as compared to corresponding month of the previous year

³ Including autoproduction

⁴ Denmark (Jutland)

⁵ YU = FRY + FYROM (Federal Republic of Yugoslavia and Former Yugoslav Republic of Macedonia)

⁶ The representativity of data referring to the whole country including the isolated systems of the Greek island is 91%.

The representativity of data referring to the mainland interconnected system is 98%.

Existing lines with towers for lines with 2 circuits mounted

	B	D	E	F	GR	I	SLO	HR	JIEL	L	NL	A	P	CH	CZ	H	PL	SK	CX	
2011	8940	52	3880	47511	228	4845	1757	358	158	121	325	1728	140	18	694	828	312	734	381	323
2008	420	158	4787	4283	18	4428	134	807	105	115	367	1819	175	82	522	10316	438	411	321	458

	F	I	SLO	HR	JIEL	L	NL	A	P	CH	CZ	H	PL	SK
B	2/2					2/-	-/4							
D	2/4					8/-	-/8	9/3		5/7	1/4			
E	2/2								3/2					
	F	3/3								5/5				
	GR	-/1			-/1									
		I	1/1					1/-		6/2				
			SLO	2/3				1/2						
				HR	7/3									
									JIEL					
									A	1/2	2/1	2/1		
													CZ	2/2
													H	2/2
													PL	2/2



Contact

Boulevard Saint-Michel, 15
 B-1040 Brussels – Belgium
 Tel +32 2 741 69 40 – Fax +32 2 741 69 49

info@ucte.org
 www.ucte.org