



January 2002

Monthly provisional values
union for the co-ordination of transmission of electricity

Table of contents		Page
1	Electricity supply situation of the countries	2
2	Physical energy flows	3
3	Monthly consumption	4
4	Monthly consumption variation	5
5	Consumption of last 12 months	6
6	Variation of the last 12 months' consumption	7
7	Load flows (night)	8
8	Load flows (day)	9
9	Unavailability of international tie lines (major events)	10
10	Network reliability (major events)	12
11	Scheduled exchanges	13
12	Load on the 3 rd Wednesday	14

Countries	B	D	E	F	GR	I	SLO	HR	YU ⁴	L	NL	A	P	CH	CZ	H	PL	SK	UCTE ⁵
Net production in GWh¹																			
Hy	150	1926	1927	4154	350	2800	110	371	846	87	0	n.a.	666	2360	268	17	329	405	16766
Tn	4212	15243	5520	40060	-	-	492	0	0	0	335	n.a.	0	2384	1857	1308	0	1667	73078
Tc	2693	33004	12204	6693	3730	21283	510	738	3464	299	8518	n.a.	3196	248	4436	1882	13781	942	117869
Total	7055 ²	50173 ²	19651 ²	50907	4080	24083	1112	1109 ²	4310	386	8853 ²	n.a.	3862 ²	4992 ²	6561 ²	3207 ²	14110 ²	3014 ²	207713
Exchange balance in GWh																			
Imp. = +	869	-1303	532	-5290	196	4456	-64	441	861	249	1031	n.a.	33	860	-567	270	-814	-410	1350
Exp. = -																			
Consumption of pumps in GWh																			
	141	534	653	679	94	975	0	3	90	100	0	n.a.	86	104	39	0	217	28	3743
Consumption in GWh¹																			
monthly																			
	7783	48336	19530	44938	4182	27564	1048	1547	5081	535	9884	n.a.	3809	5748	5955	3477	13079	2576	205072
Δ^3 [%]	-1,6	1,9	8,2	3,8	7,7	3,9	6,4	13,8	3,6	-0,2	2,5	n.a.	3,1	4,2	1,0	1,0	-1,1	2,6	3,2
last 12 months																			
	83431	496269	207155	438683	46385	306281	10854	14590	45105	5938	107384	n.a.	40138	58134	58749	36819	135098	25872	2164685
Δ^3 [%]	0,3	0,2	6,2	2,8	8,1	2,4	-2,9	6,3	4,2	1,3	4,0	n.a.	6,5	3,0	2,9	2,5	-0,4	1,3	2,2
Energy capability factor																			
	-	1,39	-	-	0,63	0,54	1,03	0,57	0,66	-	-	n.a.	0,39	0,78	-	-	-	1,39	0,7

¹ Percentage as referred to total values in %

Countries	B	D	E	F	GR ⁶	I	SLO	HR	YU	L	NL	A	P	CH	CZ	H	PL	SK
Production	100	93	94	97	91	100	95	100	96	98	100	n.a.	91	100	100	100	100	100
Consumption	100	93	94	97	91	100	95	100	96	99	100	n.a.	91	100	100	100	100	100

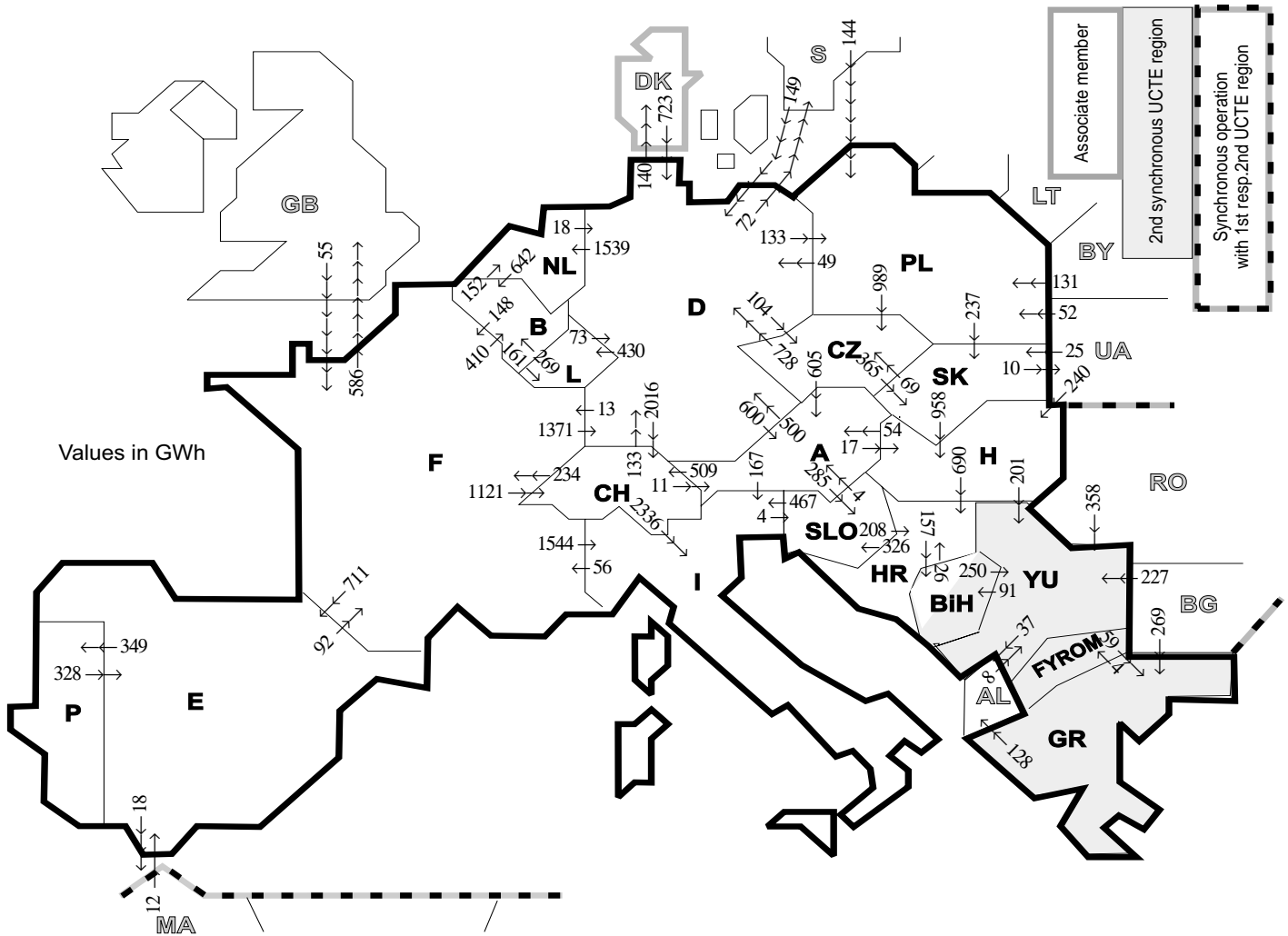
² Including deliveries from industry

³ Variation as compared to corresponding period of the previous year and representativity 100%

⁴ YU = FRY + FYROM (Federal Republic of Yugoslavia and Former Yugoslav Republic of Macedonia)

⁵ Without monthly values for Austria

⁶ The representativity of data referring to the whole country including the isolated systems of the Greek island is 91%. The representativity of data referring to the mainland interconnected system is 98%.



Exporting countries	Importing countries																				Σ Export		
	B	D	E	F	GR	I	SLO	HR	BiH	YU	L	NL	A	P	CH	CZ	H	PL	SK	III ¹			
B	-	-	-	148	-	-	-	-	-	-	161	152	-	-	-	-	-	-	-	-	-	461	
D	-	-	-	13	-	-	-	-	-	-	430	1539	600	-	2016	104	-	133	-	212	-	5047	
E	-	-	-	92	-	-	-	-	-	-	-	-	-	349	-	-	-	-	-	-	-	18	459
F	410	1371	711	-	1544	-	-	-	-	-	-	-	-	-	1121	-	-	-	-	-	-	586	5743
GR	-	-	-	-	0	-	-	-	-	4	-	-	-	-	-	-	-	-	-	-	-	128	132
I	-	-	-	56	0	-	4	-	-	-	-	-	0	-	0	-	-	-	-	-	-	-	60
SLO	-	-	-	-	-	-	467	208	-	-	-	-	4	-	-	-	-	-	-	-	-	-	679
HR	-	-	-	-	-	-	326	208	157	0	-	-	-	-	-	-	0	-	-	-	-	-	483
BiH	-	-	-	-	-	-	-	26	26	250	-	-	-	-	-	-	-	-	-	-	-	-	276
YU	-	-	-	-	59	-	-	0	91	-	-	-	-	-	-	-	0	-	-	-	37	-	187
L	269	73	-	-	-	-	-	-	-	-	-	-	-	-	-	-	-	-	-	-	-	-	342
NL	642	18	-	-	-	-	-	-	-	-	-	-	-	-	-	-	-	-	-	-	-	-	660
A	-	500	-	-	-	167	285	-	-	-	-	-	-	-	509	0	17	-	-	-	-	-	1478
P	-	-	328	-	-	-	-	-	-	-	-	-	-	-	-	-	-	-	-	-	-	-	328
CH	-	133	-	234	-	2336	-	-	-	-	11	-	-	-	-	-	-	-	-	-	-	-	2714
CZ	-	728	-	-	-	-	-	-	-	-	-	-	605	-	-	-	-	1	365	-	-	-	1699
H	-	-	-	-	-	-	-	690	-	201	-	-	54	-	-	-	-	-	0	0	0	-	945
PL	-	49	-	-	-	-	-	-	-	-	-	-	-	-	-	989	-	-	237	0	0	-	1275
SK	-	-	-	-	-	-	-	-	-	-	-	-	-	-	-	69	958	0	-	10	10	-	1037
III ¹	-	872	12	55	269	-	-	-	-	593	-	-	-	-	-	-	240	327	25	-	-	-	2393
Σ Import	1321	3744	1051	598	328	4514	615	924	248	1048	591	1691	1274	349	3646	1162	1215	461	627	991	-	-	26398

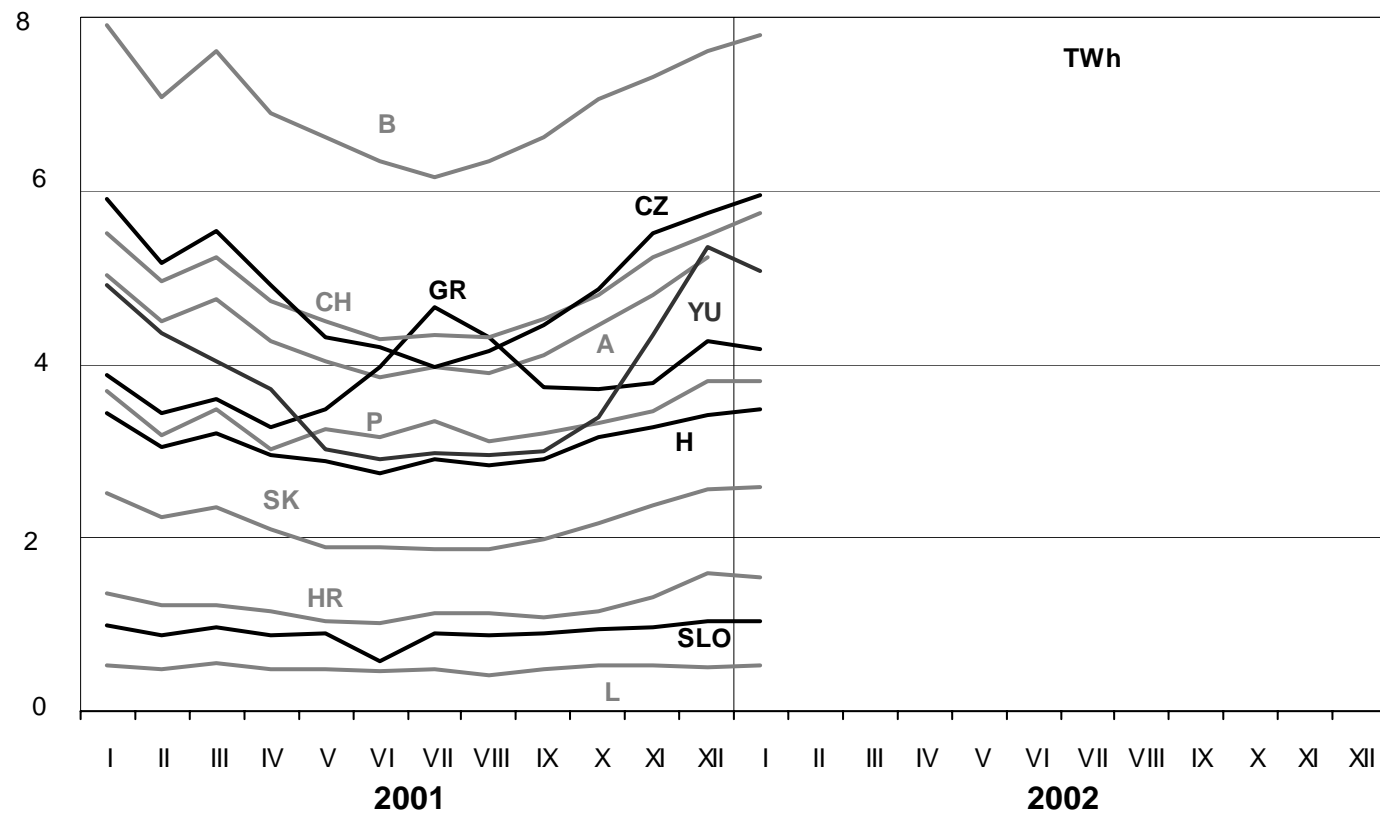
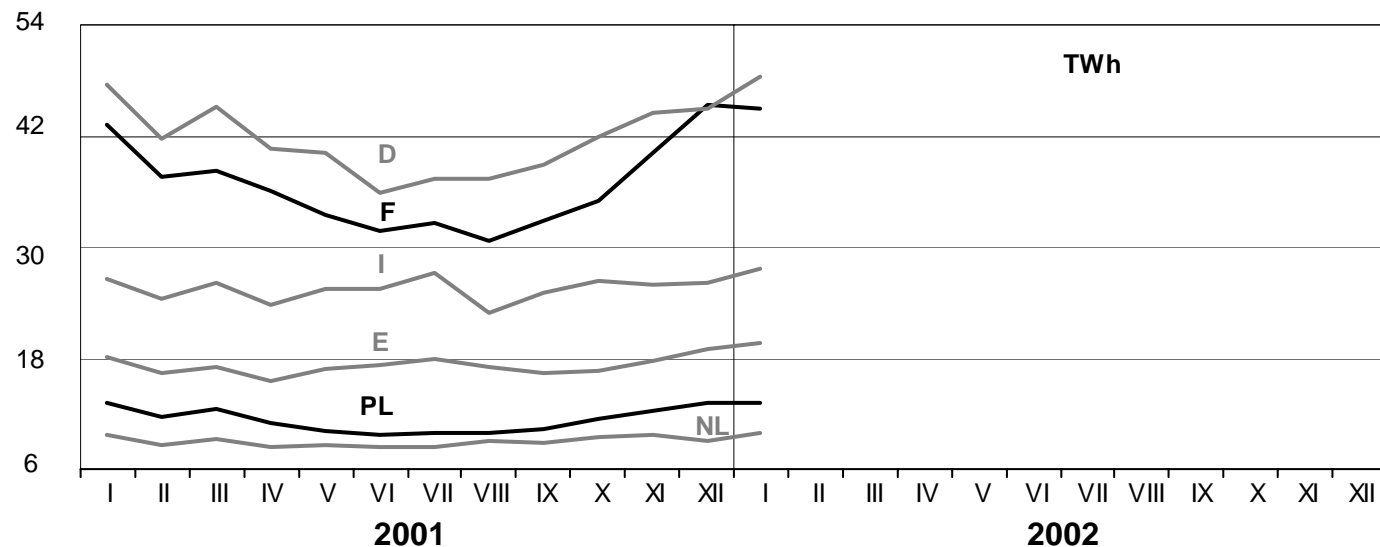
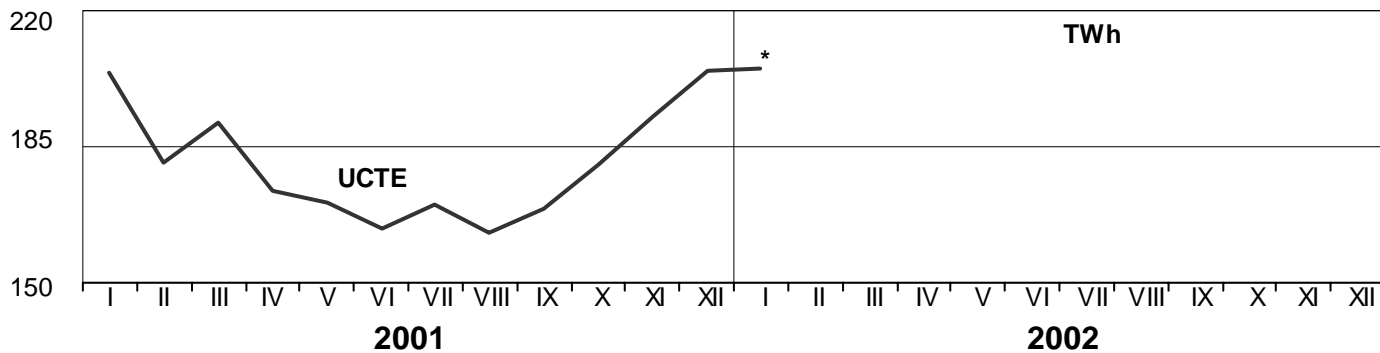
Sum of physical energy flows between UCTE countries = 23014 GWh ¹ III = Third countries
 Total physical energy flows = 26398 GWh

These physical energy flows were measured on the cross-frontier transmission lines (≥ 110 kV) listed in table 9 of the Statistical Yearbook. These values may differ from the official statistics and the exchange balances in chapter 1.

3

Monthly consumption

January 2002

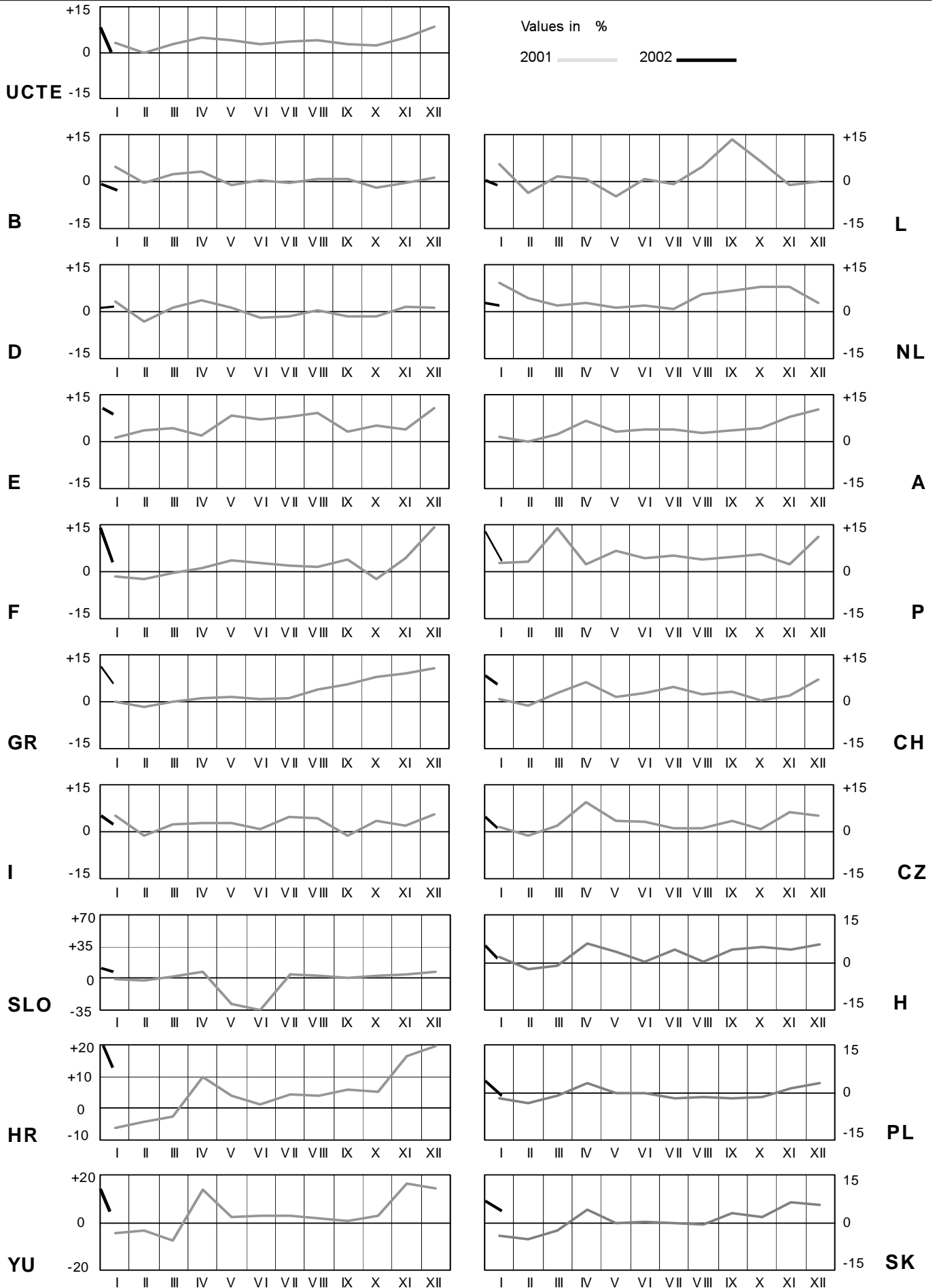


* Without consumption value for Austria in January 2002

4

Monthly consumption variation

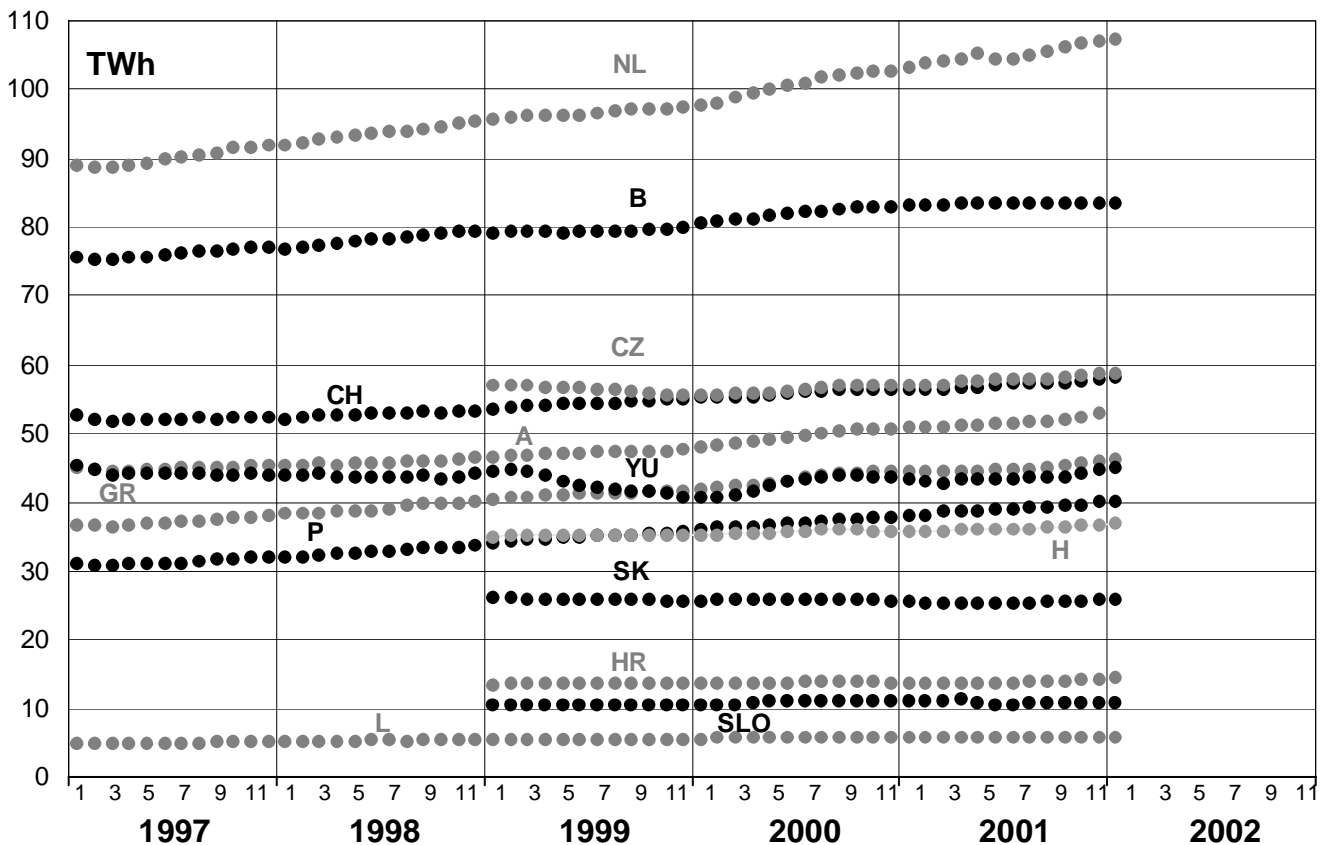
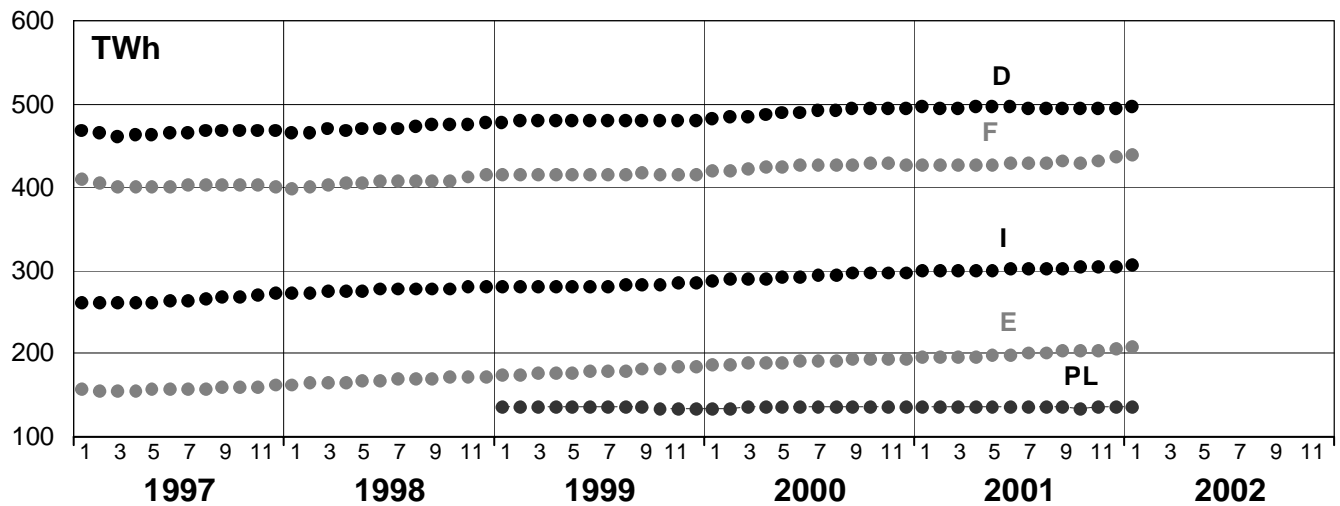
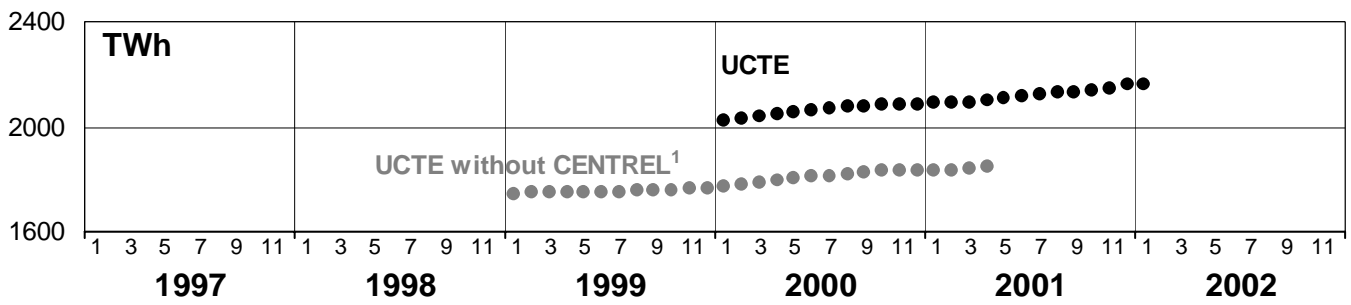
January 2002



5

Consumption of last 12 months

January 2002



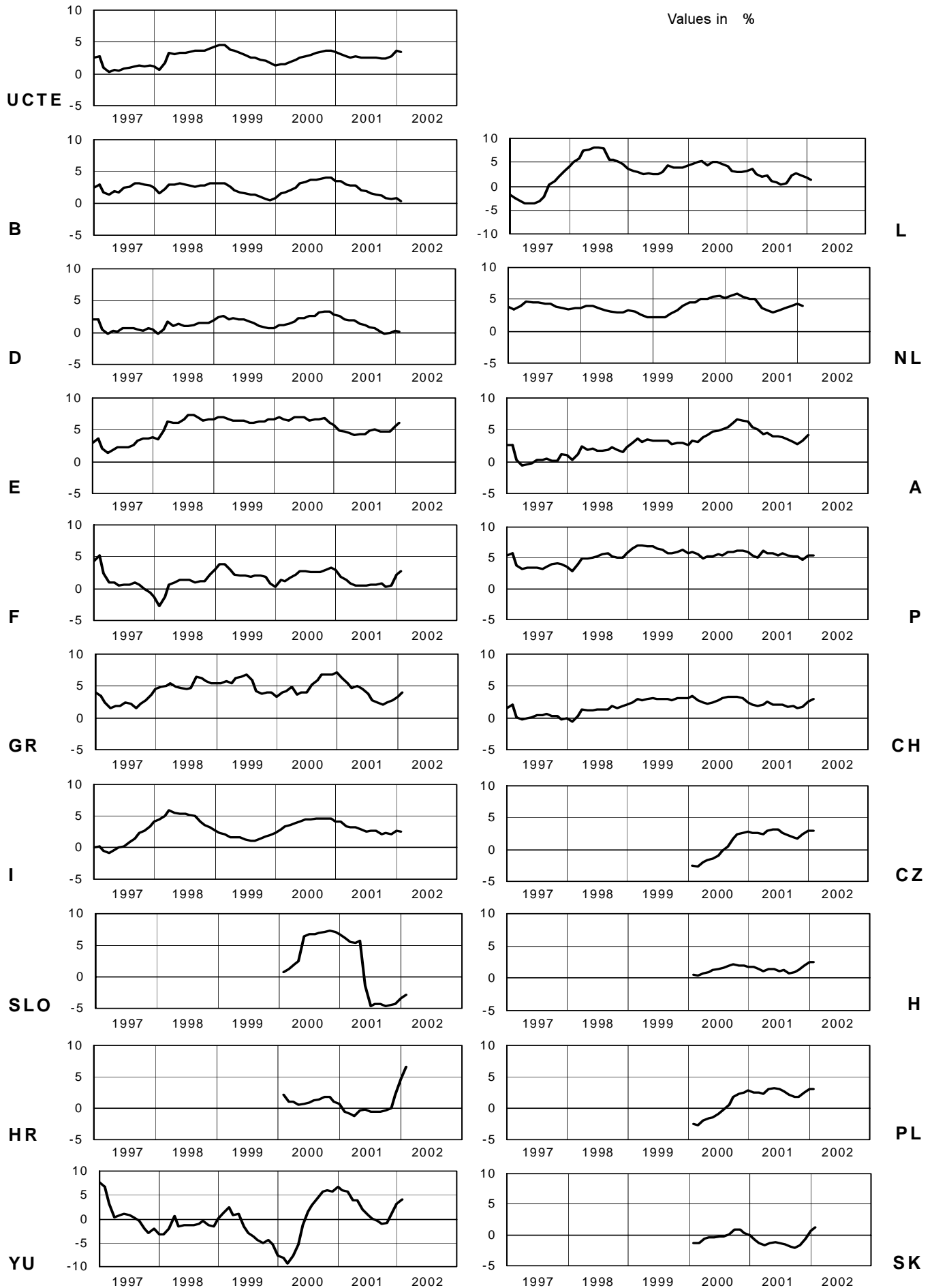
¹ CENTREL countries CZ, H, PL, SK member of UCTE from May 2001

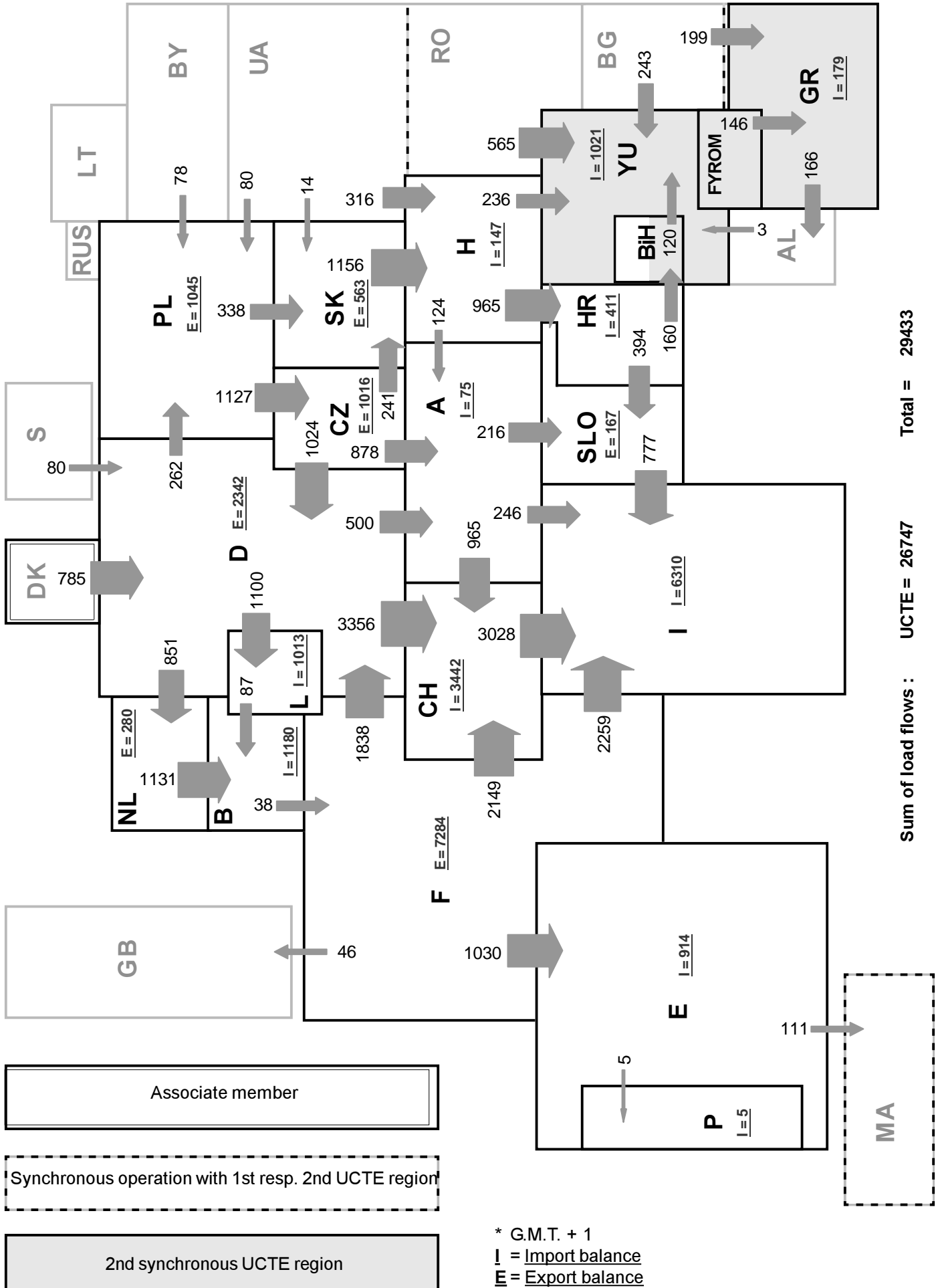
6

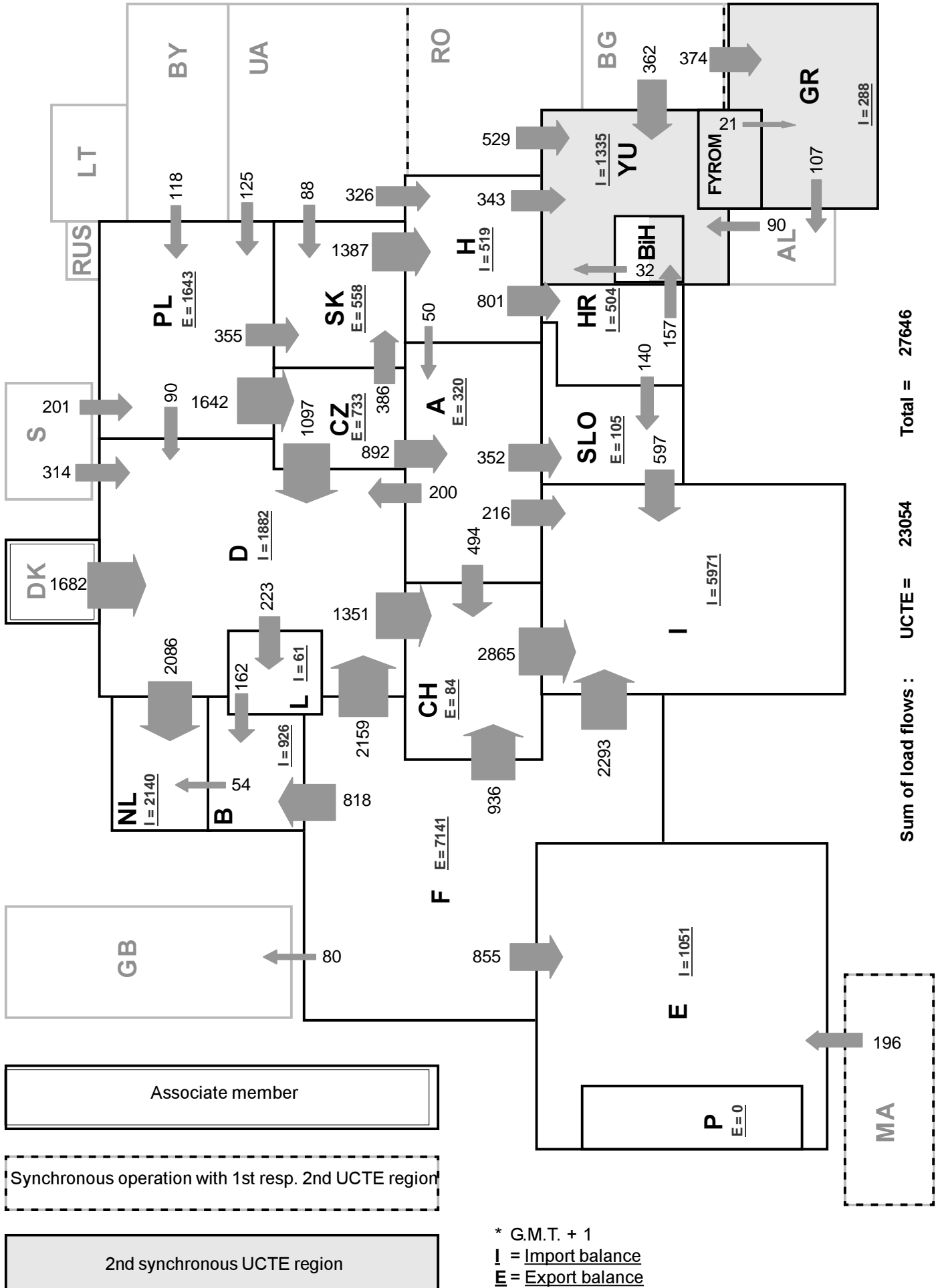
Variation of the last 12 months' consumption

January 2002

Values in %



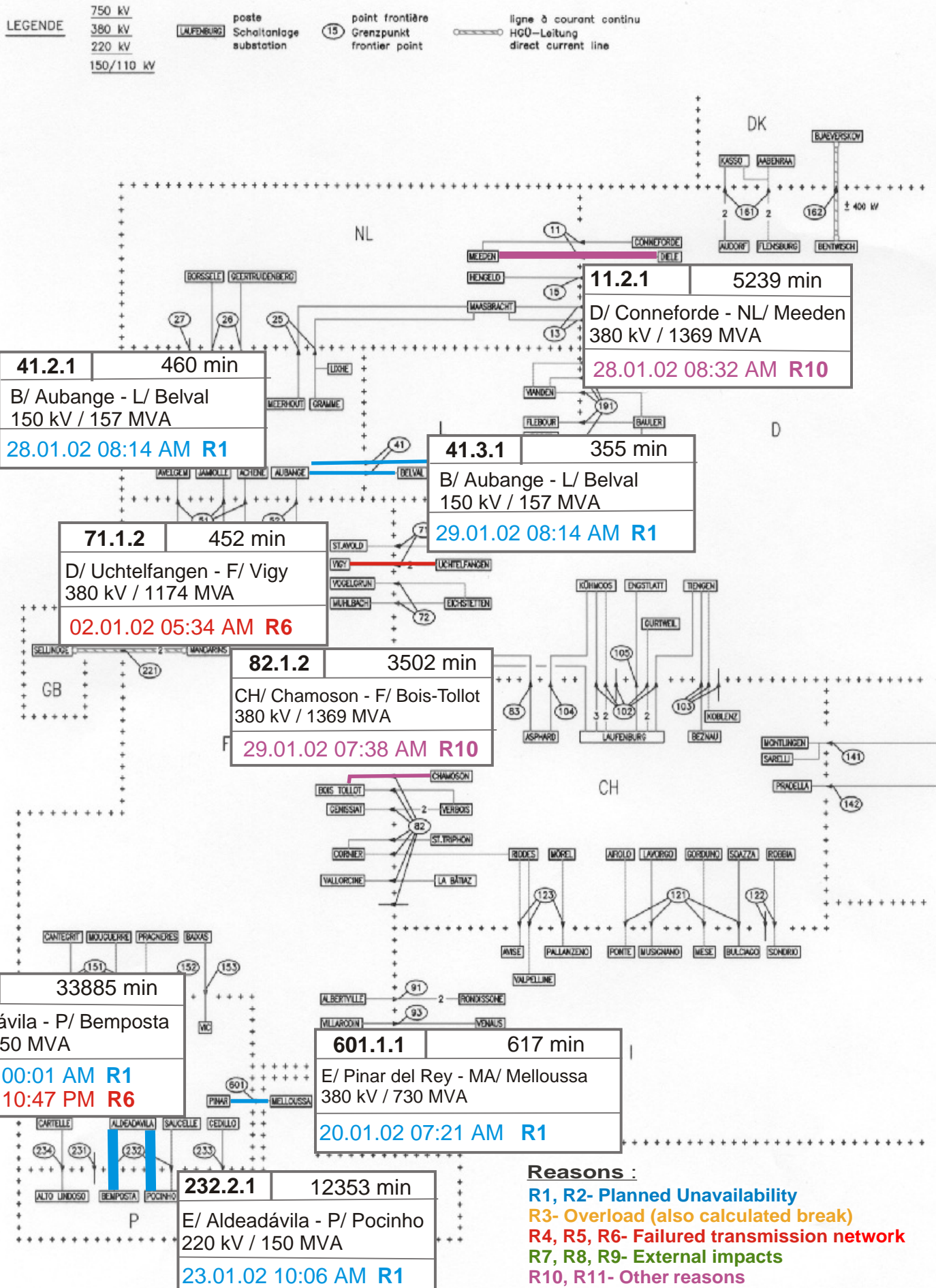


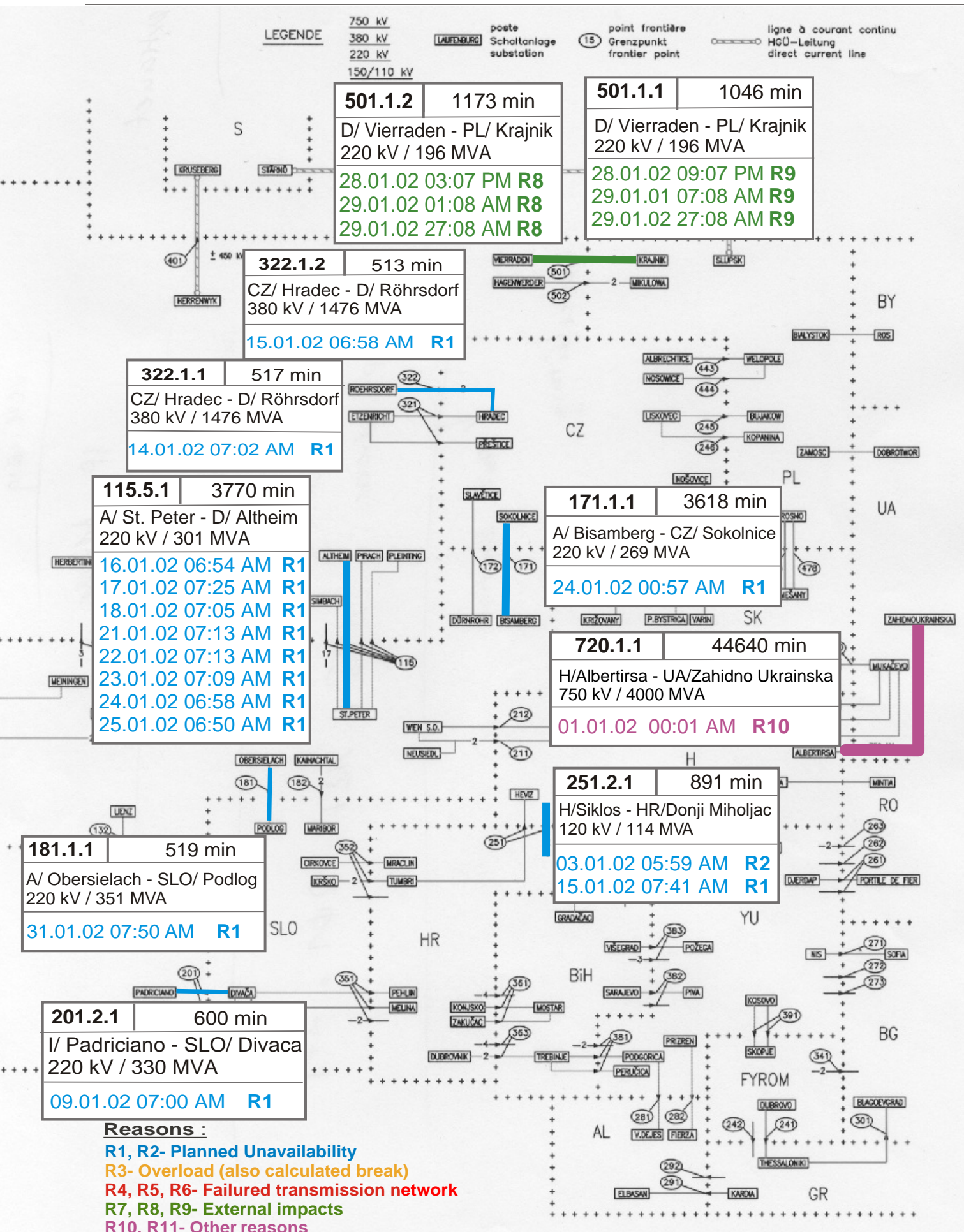


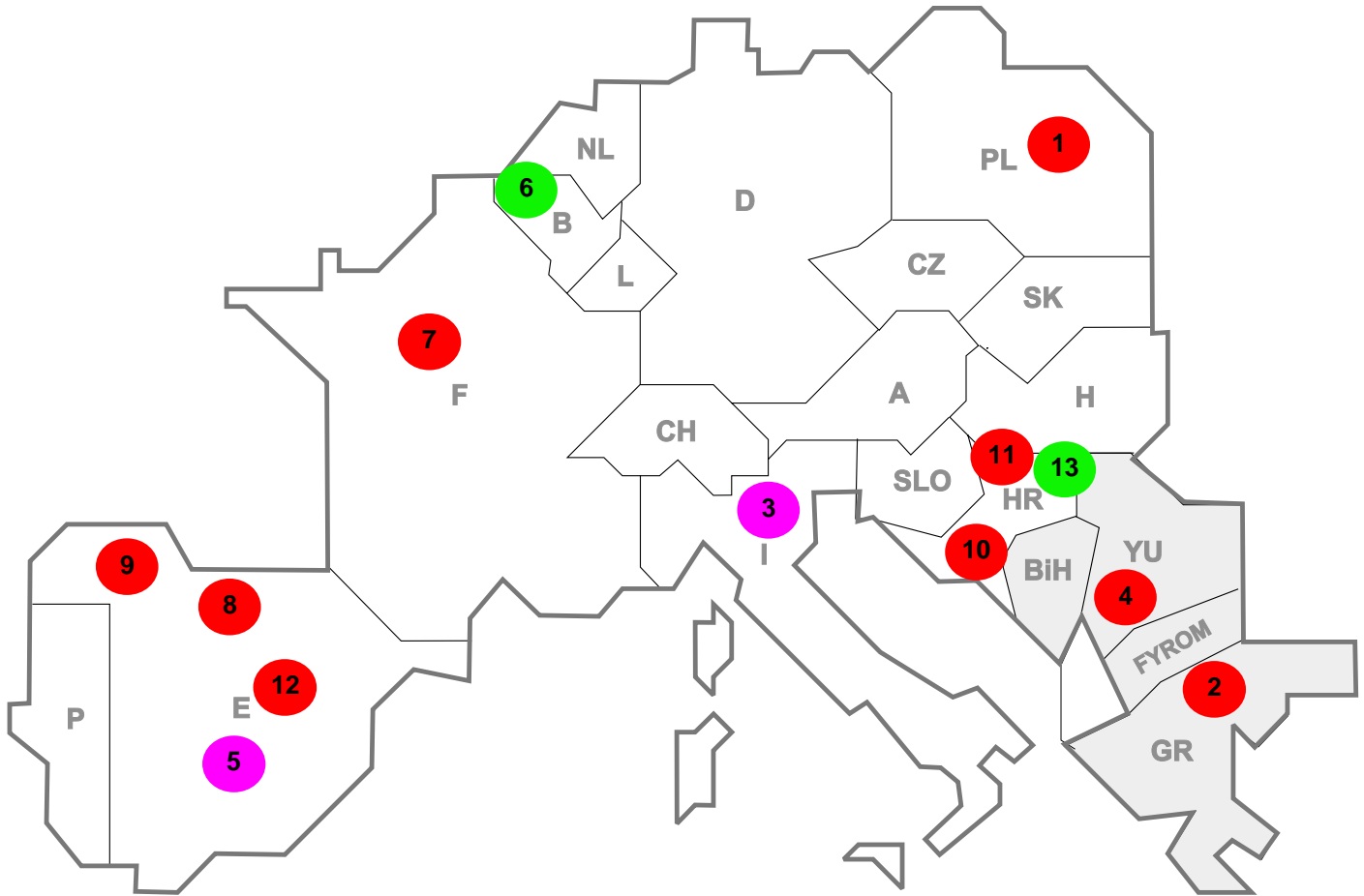
9

Unavailability of international tie lines (major events)

January 2002







Reasons:

R3 Overload

R7, R8, R9 External impacts (animals...)

R4, R5, R6 Failure in the transmission network

R10, R11 Other reasons

nbr	Country	Substation	Reason	Energie not supplied [MWh]	Total loss of power [MW]	Restoration time [min]	Equivalent time of interruption ¹
1	PL	Starno	R6	546	600	82	2,33
2	GR	Pallini	R6	190	370	40	4,19
3	I	Scandale	R10	48	270	39	0,46
4	YU	Subotica	R4	40	0	10	0,00
5	E	Andujar	R11	16	0	12	0,00
6	B	Villeroux	R8	16	47	21	0,30
7	F	Moulineaux	R5	13	38	46	0,05
8	E	Ormaiztegui (Ichaso)	R6	13	0	21	0,00
9	E	Castrelo	R6	3	0	2	0,00
10	HR	Pokuplje	R5	3	0	4	0,00
11	HR	TS Pokuplje	R6	2	0	4	0,00
12	E	Cerro la Plata (Villaverde)	R5	2	0	2	0,00
13	HR	Pokuplje	R7	1	0	4	0,00

¹ (year [in min] * power loss) / consumption last 12 months

Control area	Prog_exp	Prog_imp	Prog_exp3	Prog_imp3	Prog_exp11	Prog_imp11
B	247438	1128514	0	1299	307	1202
D	3346117	1112442	4555	1444	2762	1898
E	125808	651354	168	1100	125	1100
F	7855210	2691752	9960	2657	9905	2801
GR	26700	219072	0	196	0	280
I	59344	4512090	0	6310	31	6002
SLO	n.a.	n.a.	n.a.	n.a.	n.a.	n.a.
HR	146140	589348	178	565	162	670
YU	187512	1048235	140	1070	110	1100
NL	602689	1649232	1851	1594	304	2472
A	718739	956649	1691	736	933	810
P	8258	45229	0	29	0	25
CH	2259543	3155104	2952	6460	3385	3322
CZ	1328496	676002	1947	884	1839	918
H	758470	1020039	1045	1201	1005	1526
PL	1031522	195257	1200	80	1984	326
SK	646593	231063	776	236	950	390

- Control areas can differ from national borders (i.e. German block which includes parts of A, L and DK).
- Values are calculated on an hourly base (MWh).
- This values are not the provisional values entered in the VULCANUS system, but the definitive values after an eventual correction during the actual date.
- Prog_exp: Sum of all positive values of every hour of every border
- Prog_imp: Sum of all negative values of every hour of every border
- Prog_exp3: Sum of all positive values the third Wednesday from 02:00 to 03:00 a.m.
- Prog_imp3: Sum of all negative values the third Wednesday from 02:00 to 03:00 a.m.
- Prog_exp11: Sum of all positive values the third Wednesday from 10:00 to 11:00 a.m.
- Prog_imp11: Sum of all negative values the third Wednesday from 10:00 to 11:00 a.m.

Consumption load¹

19.12.01	B	D ⁶	E	F	GR	I	SLO	HR	YU ⁵	L	NL	A	P	CH	CZ	H	PL	SK	UCTE
3 ⁰⁰ h MW	9761	52400	23643	65278	4944	28759	1142	1685	6582	716	7453	5705	3826	7837	7676	4394	17001	3684	252486
11 ⁰⁰ h MW	11699	73200	33500	72555	7012	49051	1713	2630	8025	717	13344	7611	6470	9276	9090	5427	20286	4108	335714

Peak load on 3rd Wednesday¹

19.12.01	B	D	E	F	GR	I	SLO	HR	YU ⁵	L	NL	A	P	CH	CZ	H	PL	SK	UCTE
MW	12281	75000	35186	74952	7735	51277	1789	2713	8297	857	13755	7918	7020	9396	9235	5796	21996	4264	342904
Δ % ²	-0,1	0,9	8,5	16,3	7,7	4,6	5,4	17,8	11,1	-1,9	12,2	-4,2	16,6	5,5	5,9	4,6	1,1	2,8	6,9

Power produced in parallel operation³

19.12.01	B	D	E	F	GR	I	SLO	HR	YU ⁵	L	NL	A	P	CH	CZ	H	PL	SK	Others ⁴	UCTE
MW	10588	80200	33015	74546	6664	44804	1888	2630	6432	722	11361	7847	6409	11226	11226	5277	22410	4680	2340	341925

¹ Percentage as referred to total values in %

B	D	E	F	GR ⁷	I	SLO	HR	YU ⁵	L	NL	A	P	CH	CZ	H	PL	SK
100	91	94	97	98	100	95	100	96	99	90	82	87	100	100	100	100	100

² Variation as compared to corresponding month of the previous year³ Including autoproduction⁴ Denmark (Jutland)⁵ YU = FRY + FYROM (Federal Republic of Yugoslavia and Former Yugoslav Republic of Macedonia)⁶ Provisional values⁷ The representativity of data referring to the whole country including the isolated systems of the Greek island is 91%.
The representativity of data referring to the mainland interconnected system is 98%.

Existing lines with towers for lines with 2 circuits mounted

	B	D	E	F	GR	I	SLO	HR	JIEL	L	NL	A	P	CH	CZ	H	PL	SK	CYPR	
2011	8940	52	3880	-67511	228	4845	1757	-258	-548	1231	325	1728	140	180	-694	828	3125	-7384	-3851	-3273
2008	4203	108	4787	-42843	180	4428	1348	807	-105	3115	3677	1819	-175	822	-5722	-10318	488	-8115	-3271	-8528

	F	I	SLO	HR	JIEL	L	NL	A	P	CH	CZ	H	PL	SK
B	2/2					2/-	-/4							
D	2/4					8/-	-/8	9/3		5/7	-/4			
E	2/2								3/2					
	F	3/3								5/5				
	GR	-/1			-/1									
		I	1/1					1/-		6/2				
			SLO	2/3				1/2						
				HR	7/3									
									JIEL					
									A	1/2	2/1	2/1		
													CZ	2/2
													H	-/2
													PL	-/2



Contact

Boulevard Saint-Michel, 15
 B-1040 Brussels – Belgium
 Tel +32 2 741 69 40 – Fax +32 2 741 69 49

info@ucte.org
 www.ucte.org