

SWE Intraday Capacity Calculation

external report

This document reports results of the external parallel run from the 11/10/2021 to the 17/10/2021.

FR-ES NTCs

	2:30				5:30				9:30			
	ES-FR		FR-ES		ES-FR		FR-ES		ES-FR		FR-ES	
	D-2	IDCC 1st run	D-2	IDCC 1st run	D-2	IDCC 1st run	D-2	IDCC 1st run	D-2	IDCC 1st run	D-2	IDCC 1st run
11-10-2021	1150	1350	1800	2543	1100	1350	1650	2497	550	800	2000	1900
12-10-2021	900	850	1700	2350	1100	1000	1500	2200	550	600	2050	2100
13-10-2021	1150	1050	1550	1950	1300	1200	1450	1900	500	450	1950	2000
14-10-2021	1050	1200	1700	2300	1200	1200	1650	2400	550	550	1250	850
15-10-2021	1200	1200	1450	2000	1150	1050	1550	2250	600	600	1950	2050
16-10-2021	1600	1100	1450	2200	1300	1200	1400	2200	1050	650	1750	1350
17-10-2021	1100	900	1600	2200	1250	1050	1450	2100	800	700	1900	2200

*Yellow cells represent IT issues for these borders and time stamps during the process. Blue cells represent the combination of fallback solution and afterwards a reduction by TSO during validation in D-2 process.

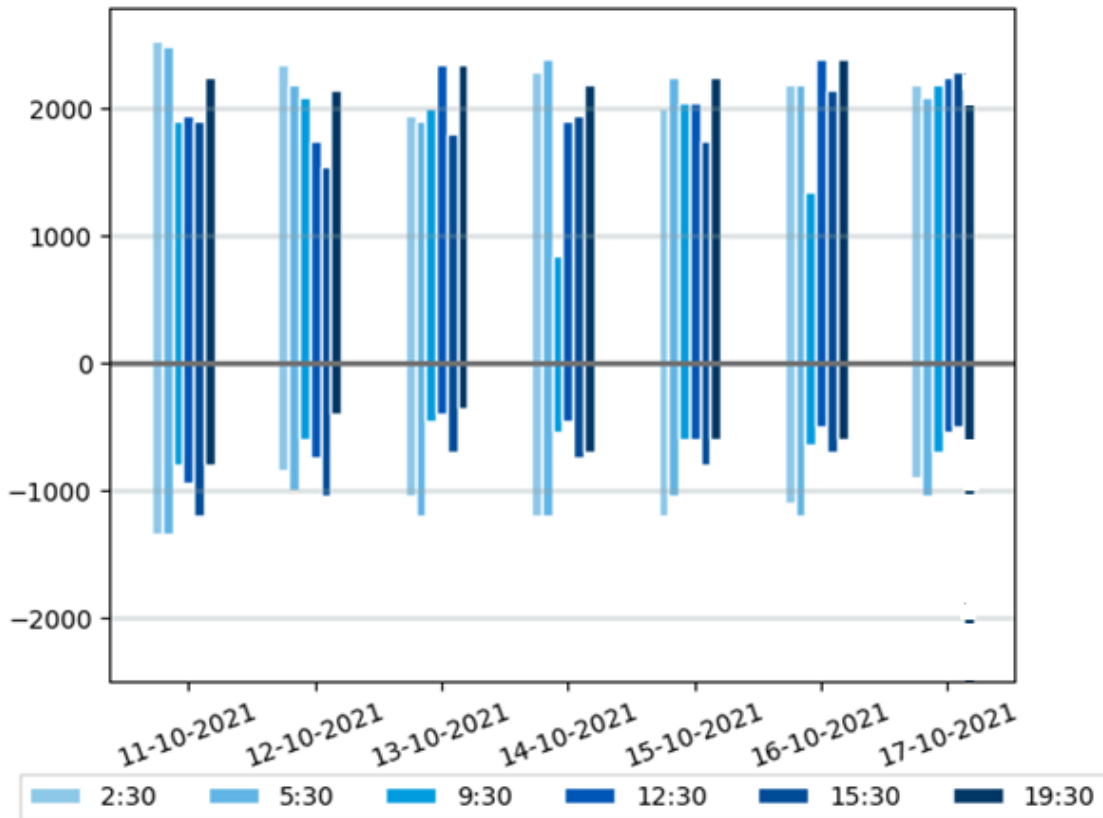
	12:30				15:30				19:30			
	ES-FR		FR-ES		ES-FR		FR-ES		ES-FR		FR-ES	
	D-2	IDCC 1st run	D-2	IDCC 1st run	D-2	IDCC 1st run	D-2	IDCC 1st run	D-2	IDCC 1st run	D-2	IDCC 1st run
11-10-2021	700	950	1750	1950	1000	1200	1550	1900	500	800	1900	2250
12-10-2021	950	750	1750	1750	1050	1050	1550	1550	700	400	1950	2150
13-10-2021	400	400	1950	2350	700	700	1800	1800	500	350	2350	2350
14-10-2021	550	450	1950	1900	600	750	1900	1950	500	700	2350	2200
15-10-2021	550	600	1900	2050	750	800	1800	1750	700	600	2000	2250
16-10-2021	800	500	1750	2400	1050	700	1450	2150	1000	600	1800	2400
17-10-2021	650	550	1900	2250	1100	500	1750	2300	650	650	1900	1900

*Yellow cells represent IT issues for these borders and time stamps during the process. Blue cells represent the combination of fallback solution and afterwards a reduction by TSO during validation in D-2 process.

Comments

For the FR-ES border five computations failed over this first week of external parallel run. All failed computations were replaced by D-2 values as fallback procedure.

FR-ES



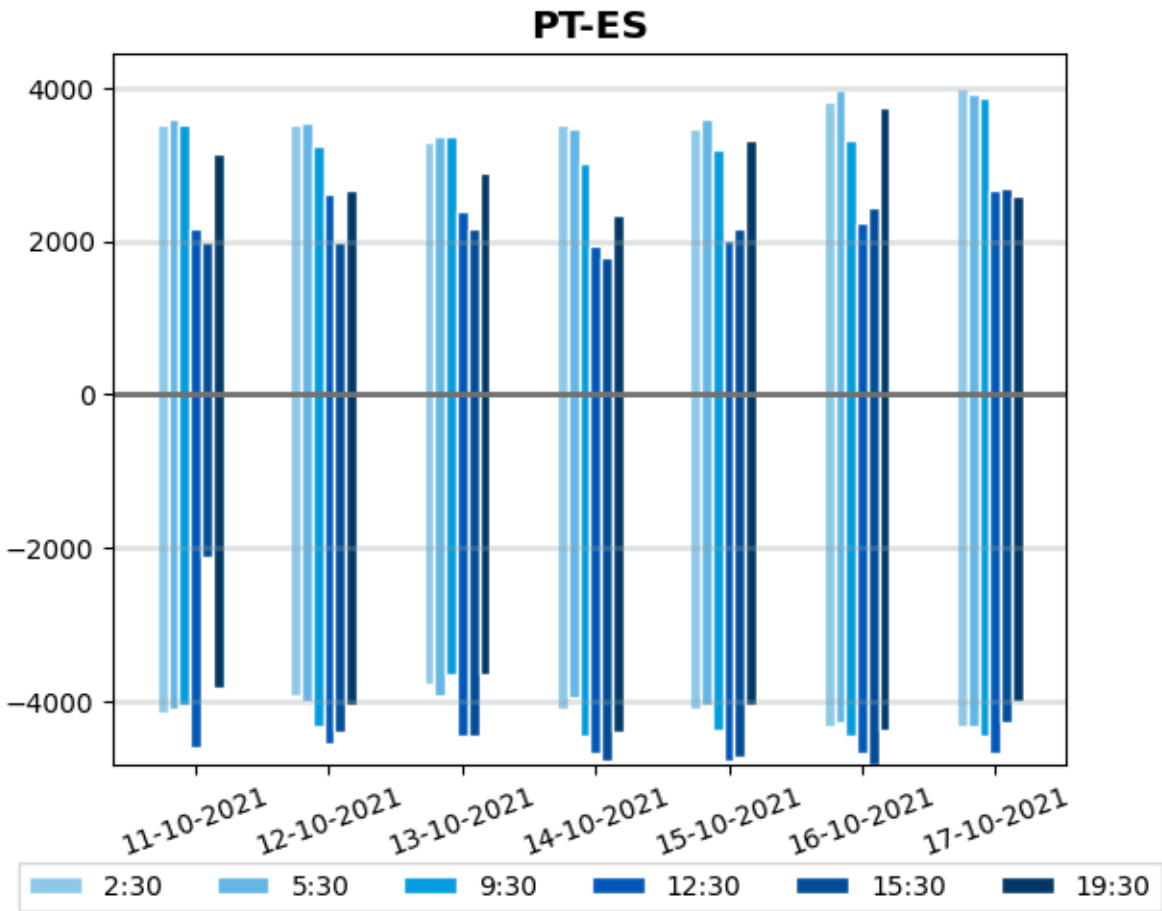
PT-ES NTCs

	2:30				5:30				9:30			
	ES-PT		PT-ES		ES-PT		PT-ES		ES-PT		PT-ES	
	D-2	IDCC 1st run	D-2	IDCC 1st run	D-2	IDCC 1st run	D-2	IDCC 1st run	D-2	IDCC 1st run	D-2	IDCC 1st run
11-10-2021	4500	4140	3825	3510	4365	4095	4050	3600	4005	4050	3465	3510
12-10-2021	4275	3915	3420	3510	4230	4005	3375	3555	3960	4320	3060	3240
13-10-2021	3780	3780	3600	3285	3690	3915	3645	3375	3735	3645	3285	3375
14-10-2021	4005	4095	3105	3510	4050	3960	3060	3465	4410	4455	2700	3015
15-10-2021	4140	4095	3510	3465	4050	4050	3465	3600	4590	4365	3060	3195
16-10-2021	4320	4320	3825	3825	4275	4275	3825	3960	4500	4455	3600	3330
17-10-2021	4230	4320	4050	4005	4275	4320	3915	3915	4365	4455	3915	3870

*Yellow cells represent IT issues for these borders and time stamps during the process.

	12:30				15:30				19:30			
	ES-PT		PT-ES		ES-PT		PT-ES		ES-PT		PT-ES	
	D-2	IDCC 1st run	D-2	IDCC 1st run	D-2	IDCC 1st run	D-2	IDCC 1st run	D-2	IDCC 1st run	D-2	IDCC 1st run
11-10-2021	4545	4590	2160	2160	4680	2115	2115	1980	3870	3825	3195	3150
12-10-2021	4365	4545	2070	2610	4410	4410	1980	1980	3915	4050	2610	2655
13-10-2021	4320	4455	2160	2385	4455	4455	2160	2160	3780	3645	3015	2880
14-10-2021	4590	4680	1935	1935	4455	4770	2160	1800	4230	4410	2970	2340
15-10-2021	4635	4770	2565	2025	4500	4725	2700	2160	4365	4050	3420	3330
16-10-2021	4590	4680	2565	2250	4815	4815	2610	2430	4365	4365	3465	3735
17-10-2021	4725	4680	2745	2655	4545	4275	2295	2700	3999	3999	2600	2600

*Yellow cells represent IT issues for these borders and time stamps during the process.



Comments

On ES-PT border, seven computations failed during this first week of external parallel run. Five of them were replaced by D-2 values as fallback procedure.

Limiting elements FR-ES

Please find below the 5 limiting elements appearing more often over the period:

	CNEs and associated Contingencies	Contingency Location	Frequency (%)
#1	Tie Line	FR-ES	64.1 %
	N-1 Contingency [FR]		1.5 %
	N-1 Contingency 400 kV [ES-FR]		62.6 %
#2	Branch 220 kV	ES	14.5 %
	Base Case		14.5 %
#3	Branch	FR	7.6 %
	N-1 Contingency [FR]		5.3 %
	N-1 Contingency 400 kV [ES-FR]		2.3 %
#4	Branch	FR	5.3 %
	N-1 Contingency [FR]		5.3 %
#5	Tie Line	FR-ES	5.3 %
	Contingency [ES]		1.5 %
	N-1 Contingency [FR-ES]		3.8 %

Limiting elements ES-FR

Please find below the 5 limiting elements appearing more often over the period:

	CNEs and associated Contingencies	Contingency Location	Frequency (%)
#1	Tie Line	FR-ES	83.2 %
	N-1 Contingency [FR]		13.0 %
	N-1 Contingency 400 kV [ES-FR]		70.2 %
#2	Tie Line	FR-ES	16.0 %
	N-1 Contingency [FR]		8.4 %
	N-1 Contingency 220 kV [ES-FR]		2.3 %
	N-1 Contingency 400 kV [ES-FR]		5.3 %
#3	IT issue		0.8 %
	Base Case		0.8 %

Limiting elements PT-ES

Please find below the 5 limiting elements appearing more often over the period:

	CNEs and associated Contingencies	Contingency Location	Frequency (%)
#1	Tie Line 400 kV	ES-PT	57.5 %
	N-2 Contingency 400 kV [PT-ES]		57.5 %
#2	Tie Line	PT	35.0 %
	N-2 Contingency 400 kV [PT-ES]		35.0 %
#3	GLSK limitation		7.5 %
	Base Case		7.5 %

*GLSK limitation row includes GLSK limitations located in Portuguese System and flow divergences divisions

Limiting elements ES-PT

Please find below the 5 limiting elements appearing more often over the period:

	CNEs and associated Contingencies	Contingency Location	Frequency (%)
#1	Tie Line 400 kV	ES-PT	35.9 %
	N-2 Contingency 400 kV [ES-PT]		35.9 %
#2	Branch	PT	28.2 %
	N-2 Contingency 400 kV [ES-PT]		28.2 %
#3	Tie Line 220 kV	ES-PT	20.5 %
	N-1 Contingency 220 kV [ES-PT]		20.5 %
#4	Tie Line 220 kV	ES-PT	7.7 %
	N-1 Contingency 400 kV [ES-PT]		7.7 %
#5	GLSK limitation		7.7 %
	Base Case		7.7 %

*GLSK limitation row includes GLSK limitations located in Portuguese System and flow divergences divisions