



European Network of  
Transmission System Operators  
for Electricity

---

# SOGL TRANSPARENCY REPORTING

# IMPLEMENTATION GUIDE

---

2021-06-01

---

APROVED DOCUMENT  
VERSION 2.0

1 Copyright notice:

2 **Copyright © ENTSO-E. All Rights Reserved.**

3 This document and its whole translations may be copied and furnished to others, and derivative  
4 works that comment on or otherwise explain it or assist in its implementation may be prepared,  
5 copied, published and distributed, in whole or in part, without restriction of any kind, provided  
6 that the above copyright notice and this paragraph are included on all such copies and  
7 derivative works. However, this document itself may not be modified in any way, except for  
8 literal and whole translation into languages other than English and under all circumstances, the  
9 copyright notice or references to ENTSO-E may not be removed.

10 This document and the information contained herein is provided on an "as is" basis.

11 **ENTSO-E DISCLAIMS ALL WARRANTIES, EXPRESS OR IMPLIED, INCLUDING BUT NOT**  
12 **LIMITED TO ANY WARRANTY THAT THE USE OF THE INFORMATION HEREIN WILL NOT**  
13 **INFRINGE ANY RIGHTS OR ANY IMPLIED WARRANTIES OF MERCHANTABILITY OR**  
14 **FITNESS FOR A PARTICULAR PURPOSE.**

15 **This document is maintained by the ENTSO-E CIM EG. Comments or remarks are to be**  
16 **provided at [cim@entsoe.eu](mailto:cim@entsoe.eu)**

17 **NOTE CONCERNING WORDING USED IN THIS DOCUMENT**

18 The force of the following words is modified by the requirement level of the document in which  
19 they are used.

- 20 • **SHALL:** This word, or the terms "REQUIRED" or "MUST", means that the definition is an  
21 absolute requirement of the specification.
- 22 • **SHALL NOT:** This phrase, or the phrase "MUST NOT", means that the definition is an  
23 absolute prohibition of the specification.
- 24 • **SHOULD:** This word, or the adjective "RECOMMENDED", means that there may exist valid  
25 reasons in particular circumstances to ignore a particular item, but the full implications must  
26 be understood and carefully weighed before choosing a different course.
- 27 • **SHOULD NOT:** This phrase, or the phrase "NOT RECOMMENDED", means that there may  
28 exist valid reasons in particular circumstances when the particular behaviour is acceptable  
29 or even useful, but the full implications should be understood and the case carefully weighed  
30 before implementing any behaviour described with this label.
- 31 • **MAY:** This word, or the adjective "OPTIONAL", means that an item is truly optional.
- 32

### Revision History

Version	Release	Date	Paragraph	Comments
1	0	2019-09-10		SO GL Transparency Reporting Implementation guide agreed by CIM EG. Approved by MC.
1	1	2019-11-08		Weekly resolution is removed from the list of permitted values for attribute resolution.
2	0	2021-06-01		Document aligned with the revised detailed data description and business requirements specification. Section 4.1: Document references versions updated. Section 4.2: Applicable ESMP documents section added.  Sections 6.4 and 6.5: Use case and sequence diagrams simplified to cover data exchanges with central transparency platform only.  Sections 6.5, 6.6 and 7.2: Data exchanges added for SO GL articles 185.4, 188.3, 189.2, 190.2 and 190.3. Existing data exchanges were revised.  For approval by MC. Approved by MC.

34	<b>CONTENTS</b>		
35	Copyright notice:.....		2
36	Revision History.....		3
37	CONTENTS .....		4
38	1 Scope.....		6
39	2 References.....		6
40	2.1 Normative references.....		6
41	2.2 Other references.....		6
42	3 Terms and definitions .....		8
43	4 The SOGL Transparency Reporting Business Process .....		10
44	4.1 Overview.....		10
45	4.2 Applicable ESMPdocuments .....		10
46	4.3 Applicable protocols for file based data exchange .....		10
47	4.4 Use Cases .....		11
48	4.5 Document exchange processes.....		12
49	4.5.1 Overview .....		12
50	4.6 Business process context.....		13
51	4.6.1 Submission of the results of the criteria application process		
52	(Art. 185.4) .....		13
53	4.6.2 Submission of the total amount and shares of FCR reserve		
54	capacity (Art. 187.2) .....		13
55	4.6.3 Submission of year-ahead forecast for FRR capacities per		
56	LFC block (Art. 188.3) .....		13
57	4.6.4 Submission of the FRR actual reserve capacity per LFC Block		
58	(Art. 188.4) .....		13
59	4.6.5 Submission of year ahead forecast of RR capacities per LFC		
60	block (Art. 189.2) .....		13
61	4.6.6 Submission of RR actual reserve capacity per LFC Block (Art.		
62	189.3).....		13
63	4.6.7 Submission of the sharing of FRR and RR in the same SA		
64	(Art. 190.1) .....		13
65	4.6.8 Submission of the sharing of FCR capacity between SAs ( Art.		
66	190.2).....		13
67	4.6.9 Submission of exchanged reserve capacity within and		
68	between SAs ( Art. 190.3).....		13
69	4.6.10 Acknowledgements.....		14
70	5 General rules for document exchange .....		15
71	5.1 Balancing_MarketDocument General Overview .....		15
72	5.2 Dependency tables .....		18
73	5.2.1 SO GL articles 185.4 and 187.2.....		18
74	5.2.2 SO GL articles 188.3, 188.4, 189.2 and 189.3 .....		20
75	5.2.3 SO GL article 190 .....		23
76			
77			

78 **List of figures**

79 Figure 1 - Use Cases ..... 11

80 Figure 2 - Sequence diagram for SOGL Transparency reporting ..... 12

81

82 **List of tables**

83 Table 1 – Applicable ESMP documents ..... 10

84 Table 2 - Actor labels and descriptions ..... 11

85 Table 3 - Balancing\_Market Document General Overview ..... 17

86 Table 4 - Dependency table for SO GL articles 185.4 and 187.2 ..... 20

87 Table 5 - Dependency table for SO GL articles 188.3, 188.4, 189.2 and 189.3 ..... 22

88 Table 6 - Dependency table for SO GL article 190 ..... 25

89

90

## 91 1 Scope

92 The objective of this implementation guide is to enable TSOs and ENTSO-E to publish  
93 information for transparency purposes in accordance with articles 183 to 190 of the System  
94 Operation Guideline.

95 This implementation guide focuses on defining the information to be exchanged for the  
96 publication of data specified by the TP Business Requirements Specification.

97 The implementation guide is one of the building blocks for using UML (Unified Modelling  
98 Language) based techniques in defining processes and documents for interchange between  
99 actors in the electrical industry in Europe.

100 This guide provides a standard for enabling a uniform layout for the transmission of data  
101 between the European electricity market participants and the Transparency platform via the  
102 Market Information Provider (who may be the Transmission System Operator). The information  
103 model within the guide shall ensure that a common interface can be provided between different  
104 software solutions. The implementation guide is developed for the harmonisation of the  
105 underlying data exchange process.

106

## 107 2 References

### 108 2.1 Normative references

109 The following documents, in whole or in part, are normatively referenced in this document and  
110 are indispensable for its application. For dated references, only the edition cited applies. For  
111 undated references, the latest edition of the referenced document (including any amendments)  
112 applies.

113 • [IEC 62325-351:2016, Framework for energy market communications – Part 351: CIM](#)  
114 [European market model exchange profile.](#)

115 • [IEC 62325-450:2013, Framework for energy market communications – Part 450: Profile](#)  
116 [and context modelling rules.](#)

117 • [IEC 62325-451-1:2017, Framework for energy market communications – Part 451-1:](#)  
118 [Acknowledgement business process and contextual model for CIM European market.](#)

119 • [IEC 62325-451-6:2018 Framework for energy market communications - Part 451-6:](#)  
120 [Publication of information on market, contextual and assembly models for European-](#)  
121 [style markets](#)

122

### 123 2.2 Other references

124 • [Articles 183 to 190 of the System Operation Guideline \(Transparency of Information\)](#)

125 • [The Harmonised Electricity Market Role Model](#)

126 • Detailed Data Description for the SO GL Transparency Reporting version 2.0

127 • Business Requirements Specification for SO GL Transparency Reporting version 2.0

128 • [All TSOs' proposal for the determination of LFC blocks for the Synchronous Area](#)  
129 [Continental Europe](#)

130  
131

- [The introduction of different time series possibilities within ENTSO-E electronic documents](#)

132 **3 Terms and definitions**

133 **CIM:** Common Information Model, set of standards for modelling data exchanges in an electrical  
134 utility enterprise developed under IEC TC 57.

135 **Criteria application process:** Means the process of calculating the target parameters for the  
136 synchronous area, the LFC block and the LFC area based on the data obtained in the data  
137 collection and delivery process.

138 **ESMP:** European Style Market Profile

139 **FCR:** Frequency Containment Reserves. Means the active power reserves available to contain  
140 system frequency after the occurrence of an imbalance

141 **FRP:** Frequency Restoration Process. Means a process that aims at restoring frequency to the  
142 nominal frequency and, for synchronous areas consisting of more than one LFC area, a process  
143 that aims at restoring the power balance to the scheduled value

144 **FRR:** Frequency Restoration Reserves. Means the active power reserves available to contain  
145 system frequency after the occurrence of an imbalance.

146 **LFC:** Load-Frequency Control.

147 **LFC area:** Means a part of a synchronous area or an entire synchronous area, physically  
148 demarcated by points of measurement at interconnectors to other LFC areas, operated by one  
149 or more TSOs fulfilling the obligations of load-frequency control.

150 **LFC block:** Means a part of a synchronous area or an entire synchronous area, physically  
151 demarcated by points of measurement at interconnectors to other LFC blocks, consisting of one  
152 or more LFC areas, operated by one or more TSOs fulfilling the obligations of load-frequency  
153 control.

154 **LFC Block Monitor:** Means a TSO responsible for collecting the frequency quality evaluation  
155 criteria data and applying the frequency quality evaluation criteria for the LFC block.

156 **LFC Operator:** Responsible for the load frequency control for its LFC Area or LFC Block. This  
157 role is typically performed by a TSO.

158 **MIA:** Market Information Aggregator.

159 **Frequency quality evaluation criteria:** Means a set of calculations using system frequency  
160 measurements that allows the evaluation of the quality of the system frequency against the  
161 frequency quality target parameters.

162 **Reserve capacity for FCR:** The capacity required for the synchronous area that shall cover at  
163 least the reference incident.

164 **RR:** Replacement Reserves. Means the active power reserves available to restore or support  
165 the required level of FRR to be prepared for additional system imbalances, including generation  
166 reserves.

167 **SA:** Synchronous Area: Means an area covered by synchronously interconnected TSOs, such  
168 as the synchronous areas of Continental Europe, Great Britain, Ireland-Northern Ireland and  
169 Nordic and the power systems of Lithuania, Latvia and Estonia, together referred to as 'Baltic'  
170 which are part of a wider synchronous area (article 2(2) of the Commission Regulation (EU)  
171 2016/631 of 14 April 2016 establishing a network code on requirements for grid connection of  
172 generators).



173 **Shares of the reserve capacity on FCR:** Shall be based on the sum of the net generation and  
174 consumption of its control area divided by the sum of net generation and consumption of the  
175 synchronous area over a period of 1 year for each TSO.

176 **Sharing of reserves:** Means a mechanism in which more than one TSO takes the same reserve  
177 capacity, being FCR, FRR or RR, into account to fulfil their respective reserve requirements  
178 resulting from their reserve dimensioning processes.

179 **Synchronous Area Monitor:** Means a TSO responsible for collecting the frequency quality  
180 evaluation criteria data and applying the frequency quality evaluation criteria for the  
181 synchronous area.

182 **TP:** Transparency Platform

183 **TSO:** Transmission System Operator.

184

## 185 4 The SOGL Transparency Reporting Business Process

### 186 4.1 Overview

187 SO GL, Title III, Articles 183 to 190, “information transparency” requires publication of all  
188 methodologies defined under Article 118 by each Synchronous area and certain methodologies  
189 developed under Article 119 at the LFC block level. The obligation to publish the Synchronous area  
190 Operational Agreements can be found in SO GL Article 184; the obligations to publish information on  
191 frequency quality is available on Article 185, the obligations to publish information on the load-  
192 frequency control structure is available on Article 186, the obligations to publish information on FCR,  
193 FRR and RR can be found in Article 187, 188 and 189 respectively. Finally, Article 190 contains the  
194 obligations to publish information on sharing and exchange of reserves. Methodologies found in article  
195 118 will be published by the Synchronous area monitor for each Synchronous area. Methodologies  
196 found in article 119 will be published by the LFC block monitor for each LFC block of each  
197 Synchronous area.

198  
199 In practice, the different categories of information to be submitted and published are detailed in  
200 chapter 4.6.

### 202 4.2 Applicable ESMP documents

203 This implementation guide assumes the use of the following ESMP documents and contextual  
204 and assembly models, also referred to as XSD or schema versions:

EDI document	version
Balancing market document	urn:iec62325.351:tc57wg16:451-6:balancingdocument:4:1
Acknowledgement document	urn:iec62325.351:tc57wg16:451-1:acknowledgementdocument:8:1

205 **Table 1 – Applicable ESMP documents**

206 All schemas are available for download from the ENTSO-E website.

207

### 208 4.3 Applicable protocols for file based data exchange

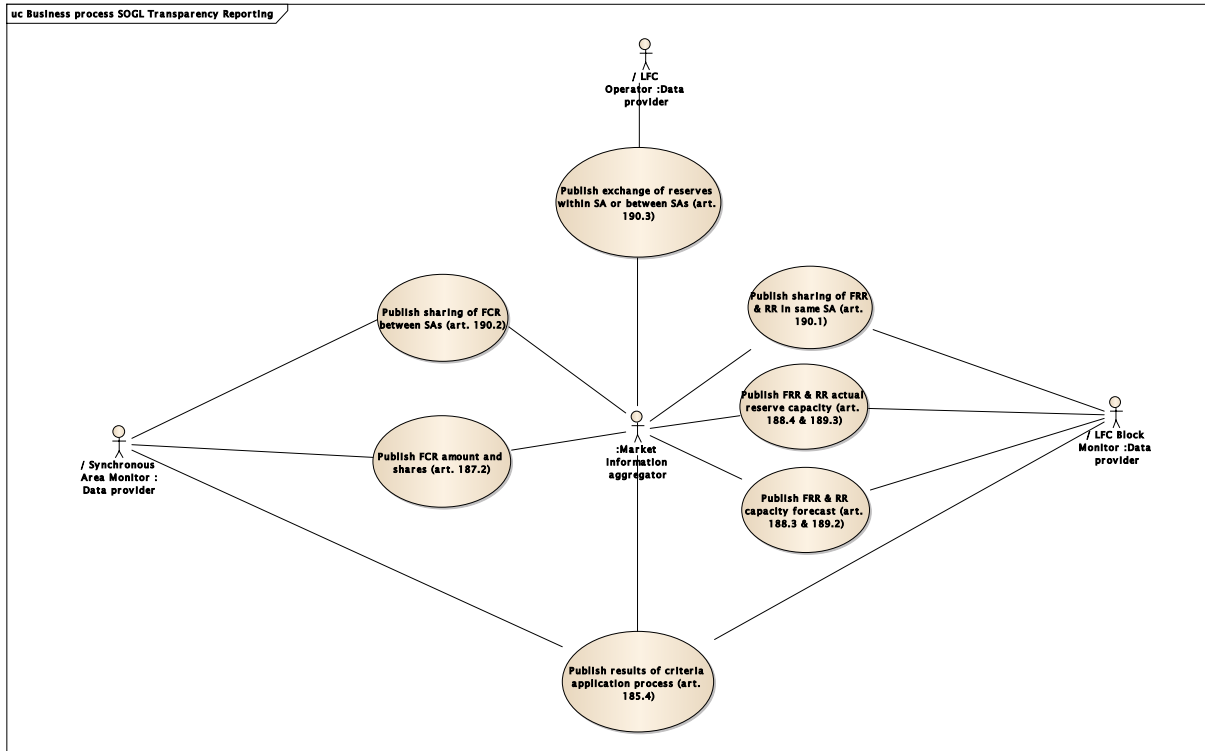
209 For file-based data exchange the following protocols will be supported:

- 210 - MADES (IEC 62325-503)
- 211 - Web services (IEC 62325-504)

212

213 **4.4 Use Cases**

214



215

**Figure 1 - Use Cases**

216

217

218

The table below gives a list of actors involved in the SOGL Transparency reporting:

219

220

Actor Label	Actor Description
Data provider	Data provider is responsible for gathering all the required balancing information by the network code and provide it to the MIA. This role will be played by the LFC operators, LFC block monitors or SA monitors.
Market information aggregator (MIA)	MIA is the role that receives, validates and acknowledges all submitted information from the data providers. This role will be played by TP.

221

222

**Table 2 - Actor labels and descriptions**

223

## 224 4.5 Document exchange processes

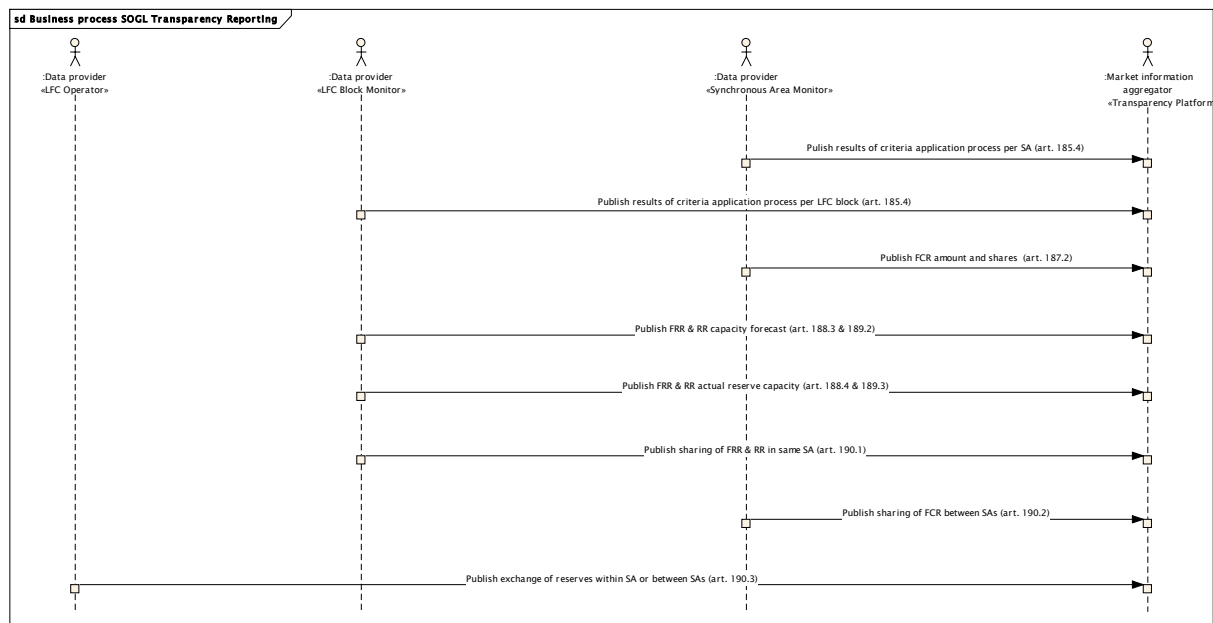
### 225 4.5.1 Overview

226 The use cases are supported by the following document exchanges:

- 227 • Submit results of the criteria application process per SA or LFC block (Art 185.4)
- 228 • Submit total amount and shares of FCR reserve capacity (Art. 187.2)
- 229 • Submit year-ahead forecast of FRR capacities per LFC block. ( Art. 188.3)
- 230 • Submit FRR actual reserve capacity per LFC block (Art. 188.4)
- 231 • Submit year-ahead forecast of RR capacities per LFC block (Art. 189.2).
- 232 • Submit RR actual reserve capacity per LFC block (Art. 189.3)
- 233 • Submit the sharing of FRR and RR in the same SA (Art. 190.1)
- 234 • Submit the sharing of FCR between SAs (Art 190.2)
- 235 • Submit exchange of reserves within SA or between SAs (Art. 190.3).

236 Next figure shows a sequence diagram of the documents exchange processes:

237



238

239

**Figure 2 - Sequence diagram for SOGL Transparency reporting**

240

241 All data submissions are based on the Balancing Market Document. The MIA shall respond with  
242 an Acknowledgement Market Document.

243

## 244 **4.6 Business process context**

245 This Implementation Guide covers only the final data exchanges between the different Data  
246 Providers (LFC operator, LFC block monitor and SA monitor) and the MIA (TP). The data  
247 aggregations that each data provider undertakes with regard to its domain (LFC block, SA) is a  
248 local responsibility and out of scope of this IG.  
249

### 250 **4.6.1 Submission of the results of the criteria application process (Art. 185.4)**

251 The Data provider (SA monitor or LFC block monitor) submits to MIA (TP) the resulting values  
252 from the frequency quality evaluation process including the measurement resolution, accuracy  
253 and calculation methods. Before submitting the information, the SA or LFC block monitor shall  
254 aggregate the received values per SA or LFC block. This data is published ex-post quarterly.  
255

### 256 **4.6.2 Submission of the total amount and shares of FCR reserve capacity (Art. 187.2)**

257 Data provider (SA monitor) submits to MIA (TP) the total amount of FCR reserve capacity values  
258 per SA. Before submitting this information, SA monitor shall aggregate the received values per  
259 SA. SA monitor also submits the share of capacity per LFC block. Data is published ex-ante per  
260 calendar year.  
261

### 262 **4.6.3 Submission of year-ahead forecast for FRR capacities per LFC block (Art. 263 188.3)**

264 The LFC block monitor submits the year-ahead forecast of FRR capacities for its LFC block.  
265

### 266 **4.6.4 Submission of the FRR actual reserve capacity per LFC Block (Art. 188.4)**

267 LFC block monitor submits to MIA (TP) the actual reserve capacities for FRR for its LFC block  
268 on a quarterly basis ex-post.  
269

### 270 **4.6.5 Submission of year ahead forecast of RR capacities per LFC block (Art. 189.2)**

271 The LFC block monitor submits to MIA (TP) the year-ahead forecast of RR capacities.  
272

### 273 **4.6.6 Submission of RR actual reserve capacity per LFC Block (Art. 189.3)**

274 LFC block monitor submits to MIA (TP) the actual reserve capacities for RR for its LFC block  
275 on a quarterly basis ex-post.  
276

### 277 **4.6.7 Submission of the sharing of FRR and RR in the same SA (Art. 190.1)**

278 All LFC block monitor submits to MIA (TP) the reduced volume of mFRR, aFRR or RR capacity  
279 within its LFC block due to sharing of reserves. Data is submitted ex-ante per sharing  
280 agreement .  
281

### 282 **4.6.8 Submission of the sharing of FCR capacity between SAs ( Art. 190.2)**

283 The SA monitor submits to the MIA (TP) the shared volume and reduction of reserve capacity  
284 in its SA. Data is submitted ex-ante per sharing agreement.  
285

### 286 **4.6.9 Submission of exchanged reserve capacity within and between SAs ( Art. 190.3)**

287 The LFC operator submits data describing the reserve capacities to be exchanged to the MIA  
288 (TP). The exchanged volumes are represented by reserve capacity exported or imported by a

289 given LFC area or LFC block within the same or different SA. Data is submitted ex-ante,  
290 separately per reserve type RR, aFRR, mFRR or FCR.

291

#### 292 **4.6.10 Acknowledgements**

293 All received documents must be acknowledged in a syntactic and business/semantic way by  
294 the MIA (TP). If the submitted document is rejected by the MIA (TP), it will send a negative  
295 acknowledgement (A02 Message fully rejected) to the sender, which gives a list of reasons for  
296 rejection. Else if the document is correct, receiver sends a positive acknowledgement (A01 fully  
297 accepted).

298

299 **5 General rules for document exchange**

300 **5.1 Balancing\_MarketDocument General Overview**

301 Following tables shows a description of the different attributes in the Balancing Market  
302 Document to be used in this business process and the XSD requirements for each one of them.

303

<b>Balancing_MarketDocument</b>			
<b>Class</b>	<b>Attribute</b>	<b>Description</b>	<b>XSD Requirements</b>
Balancing_MarketDocument	mRID	Unique identification of the Balancing Market Document	Mandatory
	revisionNumber	Identification of version that distinguishes one version from another	Mandatory
	type	The coded type of a document	Mandatory
	process.processType	Identification of the nature of the process that the document addresses	Mandatory
	sender.mRID	sender ID	Mandatory
	sender.roleType	Role played by the sender	Mandatory
	receiver.mRID	receiver ID	Mandatory
	receiver.roleType	Role played by the receiver	Mandatory
	createdDateTime	Date and time of document creation	Mandatory
	docstatus	identification of condition or position of a document with regard to its standing See Note 1 below.	Optional
	area_Domain.mRID	Unique id of domain area	Optional
	allocationDecision_DateAndOrTime.dateTime	Not used	Optional
	period.TimeInterval	Start and end date time of a given period interval	Mandatory

304  
305  
306

Note 1: docStatus A13=Withdrawn may exceptionally be used to withdraw data erroneously submitted to MIA.

307  
308

<b>Balancing_MarketDocument</b>			
<b>Class</b>	<b>Attribute</b>	<b>Description</b>	<b>XSD Requirements</b>
TimeSeries	mRID	Time series Unique id	Mandatory
	businessType	Identification of the nature of time series	Mandatory
	acquiring_Domain.mRID	Identification of the acquiring domain	Optional
	connecting_Domain.mRID	Identification of the connecting domain	Optional
	type_MarketAgreement.type	Not used	Optional
	standard_MarketProduct.marketProductType	Not used	Optional
	original_MarketProduct.marketProductType	Not used	Optional
	mktPSRType.psrType	Not used	Optional
	flowDirection.direction	Coded identification of energy flow	Optional
	currency_Unit.name	Not used	Optional
	quantity_Measure_Unit.name	Unit of measure for the time series	Optional
	price_Measure_Unit.name	Not used	Optional
	curveType	Identification of the coded representation of type of curve	Optional
cancelledTS	May be used	Optional	
Series_Period	timeInterval	Time interval of the period	Mandatory
	resolution	The number of units of time that composes of an individual step change within a period	Mandatory
Point	position	Position within the time interval	Mandatory
	quantity	Principal Quantity	Optional
	secondaryQuantity	Secondary Quantity	Optional



309 **Table 3 - Balancing\_Market Document General Overview**

310 Note: The rest of the attributes in point class are optional and they are not used in this business  
311 process. The same applies to Financial\_Price class.

312 **5.2 Dependency tables**

313 **5.2.1 SO GL articles 185.4 and 187.2**

314 The table below indicates which attributes must or may be used within the Balancing Market  
315 document when submitting data required under SO GL articles 185.4 and 187.2.  
316

Class	Attribute	185.4 Criteria application process	187.2 FCR total capacity	187.2 Shares of FCR capacity
Balancing_MarketDocument	mRID	Used	Used	Used
	revisionNumber	Used	Used	Used
	type	A45: Measurement Value Document	A26: Capacity document	A26: Capacity document
	process.processType	A64: criteria application for instantaneous frequency A65: Criteria application for frequency restoration	A52: Frequency Containment Reserve	A52: Frequency Containment Reserve
	sender.mRID	Used	Used	Used
	sender.roleType	A39: Data Provider	A39: Data Provider	A39: Data Provider
	receiver.mRID	Used	Used	Used
	receiver.roleType	A32: MIA	A32: MIA	A32: MIA
	createdDateTime	Used	Used	Used
	area_Domain.mRID	SA mRID when processType = A64 LFC block mRID when processType = A65	SA mRID	LFC block mRID
period.TimeInterval	Quarter	Year	Year	
	mRID	Used	Used	Used

TimeSeries	businessType	<p>Codes used when ProcessType = A64:  C60 = frequency deviation larger than standard deviation  C61 = frequency deviation larger than maximum deviation  C62 = frequency deviation not returned to 50%  C63 = frequency deviation not returned to restoration range  C64 = Frequency deviation outside recovery range  C65 = frequency</p> <p>Codes used when ProcessType = A65:  C71 = FRCE outside level 1 range  C72 = FRCE outside level 2 range  C73 = FRCE exceeded 60% of FRR capacity  C74 = FRCE exceeded steady state deviation  C75= FRCE calculation and accuracy descriptor</p> <p>Codes used for both processTypes:  C66 = Mean value  C67 = Standard deviation  C68 = Percentile  C69 = Resolution  C70 = Accuracy  C80 = frequency and accuracy descriptor</p>	A25: General capacity information	C23: Share of reserve capacity
	acquiring_Domain.mRID	Not used	Not used	Not used
	connecting_Domain.mRID	Not used	Not used	Not used
	flowDirection.direction	A01:UP when positive measure A02: DOWN when negative measure A03: UP AND DOWN when single measure	A01: UP A02: DOWN A03: Symmetric	A01: UP A02: DOWN A03:Symmetric
	quantity_Measure_Unit.name	<p>When processType=A64 and businessType=C66, C67, C68, C69 or C70: MTZ</p> <p>When processType=A64 and businessType=C60 or C61: MIN (for minute)</p>	MAW	MAW

		When processType=A64 and businessType=C65: SEC (for second)  When processType= A65 and businessType=C66, C67, C68, C69 or C70: MAW  Not used when businessType= C80 or C75  For all other combinations of processType and businessType: C62 = One		
	curveType	A01: Sequential fixed block A03: Variable sized block	A01: Sequential fixed block	A01: Sequential fixed block
Series_Period	timeInterval	Quarter time interval	Year time interval	Year time interval
	resolution	When businessType=C69, C65, C70, C80 or C75: P3M  For all other businessTypes: P1M	P1Y	P1Y
Point	position	Used	Used	Used
	quantity	Not used when businessType= C80 or C75.  Measurement value with up to 6 decimals	Total capacity with 1 MW precision	Share of capacity with 1 MW precision
	secondaryQuantity	used when business type C68 = percentile. Permitted values: 1, 5 10, 90, 95 or 99	Not used	Not used

317  
318 One or several instances of the Reason class shall be associated with the Point when  
319 BusinessType = C80 or C76 for art. 185.4. Reason class shall not be included for any other  
320 business types.  
321

Reason	code	A95 = Complementary information	Not used	Not used
	text	Descriptor	Not used	Not used

322 **Table 4 - Dependency table for SO GL articles 185.4 and 187.2**  
323

### 324 5.2.2 SO GL articles 188.3, 188.4, 189.2 and 189.3

325 The table below indicates which attributes must or may be used within the Balancing Market  
326 document when submitting data required under SO GL articles 188.3, 188.4, 189.2 and 189.3.  
327

Class	Attribute	Usage and permitted values
-------	-----------	----------------------------

Balancing_MarketDocument	mRID	Used
	revisionNumber	Used
	type	A26: Capacity document
	process.processType	Art. 187: A56=FRR Art. 188: A46=RR
	sender.mRID	Used
	sender.roleType	A39: Data Provider
	receiver.mRID	Used
	receiver.roleType	A32: MIA
	createdDateTime	Used
	area_Domain.mRID	LFC block mRID
	period.TimeInterval	Art. 188.3 and 187.2: Year Art. 188.4 and 187.3: Quarter
TimeSeries	mRID	Used
	businessType	Art. 188.3 and 187.2 C76 = forecasted capacity Art. 188.4 and 187.3: C77 = minimum available reserve capacity C78 = average available reserve capacity C79 = maximum available reserve capacity
	acquiring_Domain.mRID	Not used
	connecting_Domain.mRID	Not used
	flowDirection.direction	A01: UP A02: DOWN
	quantity_Measure_Unit.name	MAW
	curveType	A01: Sequential fixed block A03: Variable sized block
Series_Period	timeInterval	Art. 188.3 and 187.2: Year Art. 188.4 and 187.3: Quarter
	resolution	P3M

Point	position	Used
	quantity	Art. 188.3 and 187.2: Forecasted capacity Art. 188.4 and 187.3: Actual capacity Data provided with 1 MW precision.
	secondaryQuantity	Not used

**Table 5 - Dependency table for SO GL articles 188.3, 188.4, 189.2 and 189.3**

328  
329

330 **5.2.3 SO GL article 190**

331 The table below indicates which attributes must or may be used within the Balancing Market  
332 document when submitting data required under SO GL article 190.  
333

Class	Attribute	190.1	190.2	190.3
Balancing_Market Document	mRID	Used	Used	Used
	revisionNumber	Used	Used	Used
	type	A26: Capacity document	A26: Capacity document	A26: Capacity document
	process.processType	A46: RR A51: aFRR A47:mFRR	A52:FCR	A52:FCR A46: RR A51: aFRR A47:mFRR
	sender.mRID	Used	Used	Used
	sender.roleType	A39: Data Provider	A39: Data Provider	A39: Data Provider
	receiver.mRID	Used	Used	Used
	receiver.roleType	A32: MIA	A32: MIA	A32: MIA
	createdDateTime	Used	Used	Used
	area_Domain.mRID	LFC block mRID	SA mRID	mRID of sender's LFC area
	period.TimeInterval	Time interval described by document	Time interval described by document	Time interval described by document

334

335

TimeSeries	mRID	Used	Used	Used
	businessType	C22: Shared balancing reserve capacity	C22: Shared balancing reserve capacity	C21: Exchanged balancing reserve capacity
	acquiring_Domain.mRID	Not used	Not used	LFC area or LFC block or region acquiring the reserves
	connecting_Domain.mRID	Not used	Not used	LFC area or LFC block or region providing the reserves
	flowDirection.direction	A01: UP A02: DOWN	A01: UP A02: DOWN A03: Symmetric	A01: UP A02: DOWN A03: Symmetric (only permitted when processType=A52)
	quantity_Measure_Unit.name	MAW	MAW	MAW
	curveType	A03: Variable sized block	A03: Variable sized block	A01: Sequential fixed block A03: Variable sized block
Series_Period	timeInterval	validity period of agreement See Note 2 below	validity period of agreement See Note 2 below	delivery period of the exchanged reserves
	resolution	P1D	P1D	PT15M
Point	position	1 See Note 2 below	1 See Note 2 below	Used
	quantity	capacity reduction with 1 MW precision	capacity reduction with 1 MW precision	Exchanged capacity with 1 MW precision
	secondaryQuantity	Not used	shared volume	Not used

336  
337  
338

Note 2: For SO GL articles 190.1 and 190.2 single, constant values for the entire validity period of the agreement shall be reported



339 Exactly one instance of the Reason class may optionally be associated with the time series  
340 when BusinessType = C22.  
341

Reason	code	A95 = Complementary information	A95 = Complementary information	Not used
	text	Additional description of the agreement	Additional description of the agreement	Not used

**Table 6 - Dependency table for SO GL article 190**

342  
343