



European Network of
Transmission System Operators
for Electricity

WEATHER DOCUMENT UML MODEL AND SCHEMA

2021-06-01
APPROVED DOCUMENT
VERSION 1.0

2

Table of Contents

3	1	Objective	5
4	2	Weather_MarketDocument	6
5	2.1	Weather contextual model.....	6
6	2.1.1	Overview of the model	6
7	2.1.2	IsBasedOn relationships from the European style market	
8		profile	7
9	2.2	Weather assembly model	8
10	2.2.1	Overview of the model	8
11	2.2.2	IsBasedOn relationships from the European style market	
12		profile	9
13	2.2.3	Detailed Weather assembly model	9
14	2.2.3.1	Weather_MarketDocument root class	9
15	2.2.3.2	Point	10
16	2.2.3.3	Reason	11
17	2.2.3.4	Series_Period	11
18	2.2.3.5	TimeSeries	12
19	2.2.3.6	UncertaintyPercentage_Quantity	13
20	2.2.4	Datatypes	13
21	2.2.5	Weather_MarketDocument XML schema structure	15
22	2.2.6	Weather_MarketDocument XML schema.....	16
23		List of figures	
24		Figure 1 - Weather contextual model	6
25		Figure 2 - Weather assembly model	8
26		Figure 3 - Weather_MarketDocument schema structure	15
27		List of tables	
28		Table 1 - IsBasedOn dependency	7
29		Table 2 - IsBasedOn dependency	9
30		Table 3 - Attributes of Weather assembly model::Weather_MarketDocument	9
31		Table 4 - Association ends of Weather assembly model::Weather_MarketDocument	
32		with other classes	10
33		Table 5 - Attributes of Weather assembly model::Point	10
34		Table 6 - Association ends of Weather assembly model::Point with other classes	11
35		Table 7 - Attributes of Weather assembly model::Reason	11
36		Table 8 - Attributes of Weather assembly model::Series_Period	11
37		Table 9 - Association ends of Weather assembly model::Series_Period with other	
38		classes	12
39		Table 10 - Attributes of Weather assembly model::TimeSeries	12
40		Table 11 - Association ends of Weather assembly model::TimeSeries with other	
41		classes	12
42		Table 12 - Attributes of Weather assembly model::UncertaintyPercentage_Quantity	13
43			

44

Copyright notice:

45 **Copyright © ENTSO-E. All Rights Reserved.**

46 This document and its whole translations may be copied and furnished to others, and derivative
47 works that comment on or otherwise explain it or assist in its implementation may be prepared,
48 copied, published and distributed, in whole or in part, without restriction of any kind, provided
49 that the above copyright notice and this paragraph are included on all such copies and
50 derivative works. However, this document itself may not be modified in any way, except for
51 literal and whole translation into languages other than English and under all circumstances, the
52 copyright notice or references to ENTSO-E may not be removed.

53 This document and the information contained herein is provided on an "as is" basis.

54 **ENTSO-E DISCLAIMS ALL WARRANTIES, EXPRESS OR IMPLIED, INCLUDING BUT NOT**
55 **LIMITED TO ANY WARRANTY THAT THE USE OF THE INFORMATION HEREIN WILL NOT**
56 **INFRINGE ANY RIGHTS OR ANY IMPLIED WARRANTIES OF MERCHANTABILITY OR**
57 **FITNESS FOR A PARTICULAR PURPOSE.**

58

Maintenance notice:

59 This document is maintained by the ENTSO-E CIM EG. Comments or remarks are to be
60 provided at cim@entsoe.eu

61

Revision History

Version	Release	Date	Comments
1	0	2021-06-01	First draft of the document. Changes in weather document xsd v1.1: <ul style="list-style-type: none">mRIDs were extended to 60 characters.Attribute order in series was amended to align with the rest of market documents. Now timeInterval is in first place and resolution in second place. Approved by MC.

62

63 1 Objective

64 The purpose of this document is to provide the contextual and assembly UML models and the
65 schema of the Weather_MarketDocument.

66 The schema of the Weather_MarketDocument could be used in various business processes.

67 It is not the purpose of this document to describe all the use cases, sequence diagrams,
68 business processes, etc. for which this schema is to be used.

69 This document shall only be referenced in an implementation guide of a specific business
70 process. The content of the business process implementation guide shall be as follows:

- 71 • Description of the business process;
- 72 • Use case of the business process;
- 73 • Sequence diagrams of the business process;
- 74 • List of the schema (XSD) to be used in the business process and versions of the
75 schema;
- 76 • For each schema, dependency tables providing the necessary information for the
77 generation of the XML instances, i.e. when the optional attributes are to be used, which
78 codes from which ENTSO-E codelist are to be used.

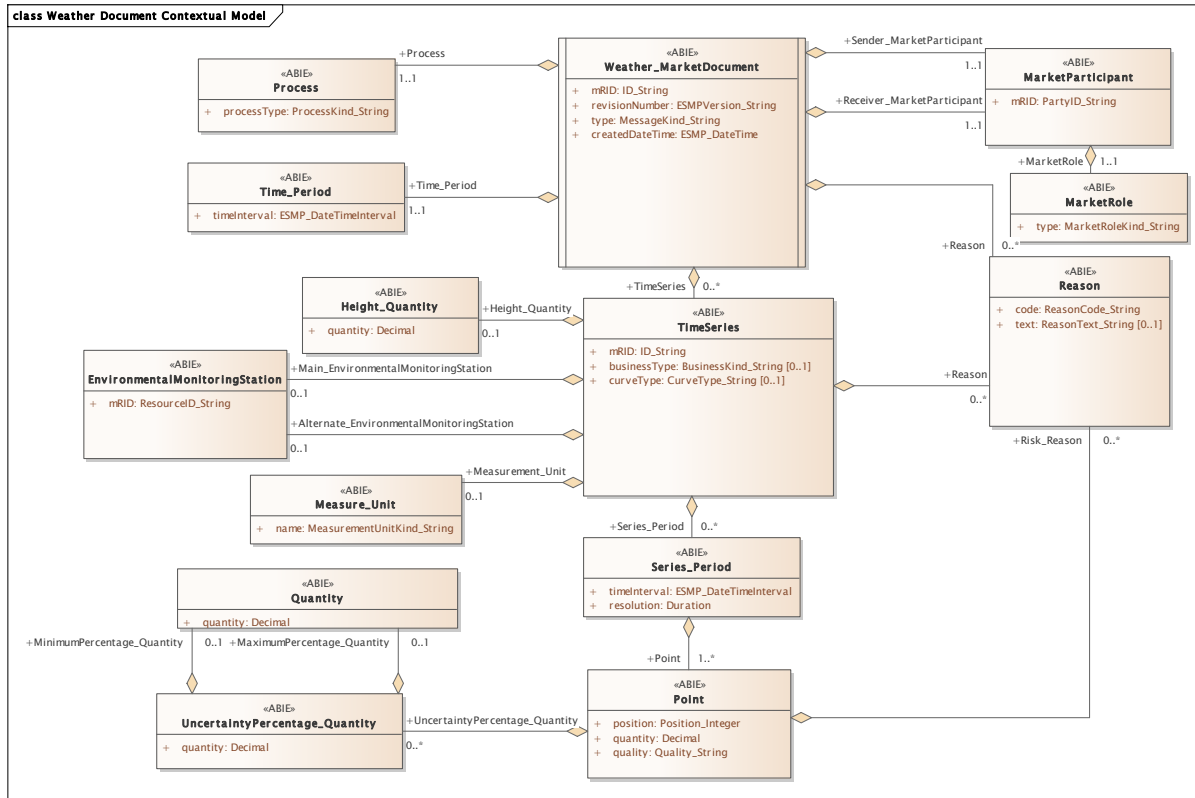
79

80 **2 Weather_MarketDocument**

81 **2.1 Weather contextual model**

82 **2.1.1 Overview of the model**

83 Figure 1 shows the model.



84

85

Figure 1 - Weather contextual model

86

87

88 **2.1.2 IsBasedOn relationships from the European style market profile**

89 Table 1 shows the traceability dependency of the classes used in this package towards the
90 upper level.

91

Table 1 - IsBasedOn dependency

Name	Complete IsBasedOn Path
EnvironmentalMonitoringStation	TC57CIM::IEC62325::MarketCommon::EnvironmentalMonitoringStation
Height_Quantity	TC57CIM::IEC62325::MarketManagement::Quantity
MarketParticipant	TC57CIM::IEC62325::MarketCommon::MarketParticipant
MarketRole	TC57CIM::IEC62325::MarketCommon::MarketRole
Measure_Unit	TC57CIM::IEC62325::MarketManagement::Unit
Point	TC57CIM::IEC62325::MarketManagement::Point
Process	TC57CIM::IEC62325::MarketManagement::Process
Quantity	TC57CIM::IEC62325::MarketManagement::Quantity
Reason	TC57CIM::IEC62325::MarketManagement::Reason
Series_Period	TC57CIM::IEC62325::MarketManagement::Period
Time_Period	TC57CIM::IEC62325::MarketManagement::Period
TimeSeries	TC57CIM::IEC62325::MarketManagement::TimeSeries
UncertaintyPercentage_Quantity	TC57CIM::IEC62325::MarketManagement::Quantity
Weather_MarketDocument	TC57CIM::IEC62325::MarketManagement::MarketDocument

92

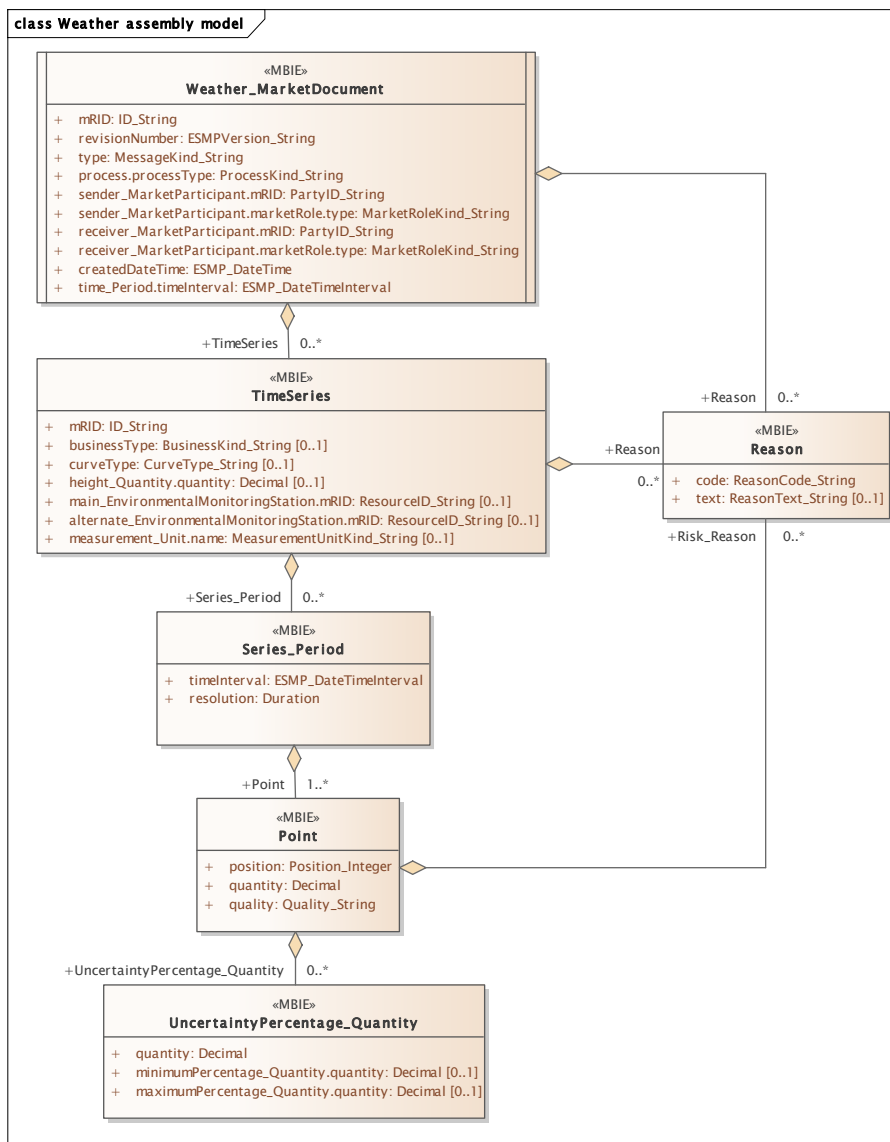
93

94

95 **2.2 Weather assembly model**

96 **2.2.1 Overview of the model**

97 Figure 2 shows the model.



98

99

Figure 2 - Weather assembly model

100

101

102 **2.2.2 IsBasedOn relationships from the European style market profile**

103 Table 2 shows the traceability dependency of the classes used in this package towards the
104 upper level.

105 **Table 2 - IsBasedOn dependency**

Name	Complete IsBasedOn Path
Point	TC57CIM::IEC62325::MarketManagement::Point
Reason	TC57CIM::IEC62325::MarketManagement::Reason
Series_Period	TC57CIM::IEC62325::MarketManagement::Period
TimeSeries	TC57CIM::IEC62325::MarketManagement::TimeSeries
UncertaintyPercentage_Quantity	TC57CIM::IEC62325::MarketManagement::Quantity
Weather_MarketDocument	TC57CIM::IEC62325::MarketManagement::MarketDocument

106

107 **2.2.3 Detailed Weather assembly model**

108 **2.2.3.1 Weather_MarketDocument root class**

109 An electronic document containing the information necessary to satisfy the requirements of a
110 given business process.

111 Table 3 shows all attributes of Weather_MarketDocument.

112 **Table 3 - Attributes of Weather assembly model::Weather_MarketDocument**

Order	mult.	Attribute name / Attribute type	Description
0	[1..1]	mRID ID_String	The unique identification of the document being exchanged within a business process flow.
1	[1..1]	revisionNumber ESMPVersion_String	The identification of the version that distinguishes one evolution of a document from another.
2	[1..1]	type MessageKind_String	The coded type of a document. The document type describes the principal characteristic of the document.
3	[1..1]	process.processType ProcessKind_String	The identification of the nature of process that the document addresses. --- The Process associated with an electronic document header that is valid for the whole document.
4	[1..1]	sender_MarketParticipant.mRID PartyID_String	The identification of a party in the energy market. --- The document owner
5	[1..1]	sender_MarketParticipant.marketRole.type MarketRoleKind_String	The identification of the role played by a market player. --- The document owner. --- The role associated with a MarketParticipant.
6	[1..1]	receiver_MarketParticipant.mRID PartyID_String	The identification of a party in the energy market. --- The document recipient.
7	[1..1]	receiver_MarketParticipant.marketRole.type MarketRoleKind_String	The identification of the role played by a market player. --- The document recipient. --- The role associated with a MarketParticipant.

Order	mult.	Attribute name / Attribute type	Description
8	[1..1]	createdDateTime ESMP_DateTime	The date and time of the creation of the document.
9	[1..1]	time_Period.timeInterval ESMP_DateTimeInterval	The start and end date and time for a given interval. --- The time interval that is associated with an electronic document and which is valid for the whole document.

113

114 Table 4 shows all association ends of Weather_MarketDocument with other classes.

115 **Table 4 - Association ends of Weather assembly model::Weather_MarketDocument with**
116 **other classes**

Order	mult.	Class name / Role	Description
10	[0..*]	TimeSeries TimeSeries	The time series that provides a set of weather characteristics. Association Based On: Weather contextual model::Weather_MarketDocument.[] ----- Weather contextual model::TimeSeries.TimeSeries[0..*]
11	[0..*]	Reason Reason	The Reason associated with the electronic document header providing different motivations for the creation of the document. Association Based On: Weather contextual model::Weather_MarketDocument.[] ----- Weather contextual model::Reason.Reason[0..*]

117

118 2.2.3.2 Point

119 The identification of the values being addressed within a specific interval of time.

120 Table 5 shows all attributes of Point.

121 **Table 5 - Attributes of Weather assembly model::Point**

Order	mult.	Attribute name / Attribute type	Description
0	[1..1]	position Position_Integer	A sequential value representing the relative position within a given time interval.
1	[1..1]	quantity Decimal	The principal quantity identified for a point.
2	[1..1]	quality Quality_String	The quality of the information being provided. This quality may be estimated, not available, as provided, etc.

122

123 Table 6 shows all association ends of Point with other classes.

124 **Table 6 - Association ends of Weather assembly model::Point with other classes**

Order	mult.	Class name / Role	Description
3	[0..*]	UncertaintyPercentage_Quantity UncertaintyPercentage_Quantity	The percentage of uncertainty of the quantity value provided. Association Based On: Weather contextual model::Point.[] ----- Weather contextual model::UncertaintyPercentage_Quantity.UncertaintyPercentage_Quantity[0..*]
4	[0..*]	Reason Risk_Reason	The risk information associated with a Point indicating the possibility of snow, ice, etc... Association Based On: Weather contextual model::Point.[] ----- Weather contextual model::Reason.Risk_Reason[0..*]

125

126 **2.2.3.3 Reason**

127 The motivation of an act.

128 Table 7 shows all attributes of Reason.

129 **Table 7 - Attributes of Weather assembly model::Reason**

Order	mult.	Attribute name / Attribute type	Description
0	[1..1]	code ReasonCode_String	The motivation of an act in coded form.
1	[0..1]	text ReasonText_String	The textual explanation corresponding to the reason code.

130

131 **2.2.3.4 Series_Period**

132 The identification of the period of time corresponding to a given time interval and resolution.

133 Table 8 shows all attributes of Series_Period.

134 **Table 8 - Attributes of Weather assembly model::Series_Period**

Order	mult.	Attribute name / Attribute type	Description
0	[1..1]	timeInterval ESMP_DateTimeInterval	The start and end time of the period.
1	[1..1]	resolution Duration	The definition of the number of units of time that compose an individual step within a period.

135

136 Table 9 shows all association ends of Series_Period with other classes.

137 **Table 9 - Association ends of Weather assembly model::Series_Period with other**
138 **classes**

Order	mult.	Class name / Role	Description
2	[1..*]	Point Point	The Point information associated with a given Series_Period.within a TimeSeries. Association Based On: Weather contextual model::Series_Period.[] ----- Weather contextual model::Point.Point[1..*]

139

140 **2.2.3.5 TimeSeries**

141 A set of time-ordered quantities being exchanged.

142 Table 10 shows all attributes of TimeSeries.

143 **Table 10 - Attributes of Weather assembly model::TimeSeries**

Order	mult.	Attribute name / Attribute type	Description
0	[1..1]	mRID ID_String	A unique identification of the time series.
1	[0..1]	businessType BusinessKind_String	The identification of the nature of the time series.
2	[0..1]	curveType CurveType_String	The identification of the coded representation of the type of curve being described.
3	[0..1]	height_Quantity.quantity Decimal	The quantity value. --- The height where the windspeed is calculated.
4	[0..1]	main_EnvironmentalMonitoringStation.mRID ResourceID_String	The unique identification of an environmental monitoring station. --- The main weather station within a TimeSeries.
5	[0..1]	alternate_EnvironmentalMonitoringStation.mRID ResourceID_String	The unique identification of an environmental monitoring station. --- The backupweather station within a TimeSeries.
6	[0..1]	measurement_Unit.name MeasurementUnitKind_String	The identification of the formal code for a measurement unit (UN/ECE Recommendation 20). --- The unit of measure associated with the quantities in a TimeSeries.

144

145 Table 11 shows all association ends of TimeSeries with other classes.

146 **Table 11 - Association ends of Weather assembly model::TimeSeries with other classes**

Order	mult.	Class name / Role	Description
7	[0..*]	Series_Period Series_Period	The time interval and resolution for a period associated with a TimeSeries. Association Based On: Weather contextual model::TimeSeries.[] ----- Weather contextual model::Series_Period.Series_Period[0..*]

Order	mult.	Class name / Role	Description
8	[0..*]	Reason Reason	The reason information associated with a TimeSeries providing motivation information. Association Based On: Weather contextual model::TimeSeries.[] ----- Weather contextual model::Reason.Reason[0..*]

147

148 2.2.3.6 UncertaintyPercentage_Quantity

149 The quantity attribute provides the information relative to the percentage related to the level of
150 uncertainty of the related quantity.

151 Table 12 shows all attributes of UncertaintyPercentage_Quantity.

152 **Table 12 - Attributes of Weather assembly model::UncertaintyPercentage_Quantity**

Order	mult.	Attribute name / Attribute type	Description
0	[1..1]	quantity Decimal	The quantity value.
1	[0..1]	minimumPercentage_Quantity.quantity Decimal	The quantity value. --- The minimum uncertainty percentage.
2	[0..1]	maximumPercentage_Quantity.quantity Decimal	The quantity value. --- The maximum uncertainty percentage

153

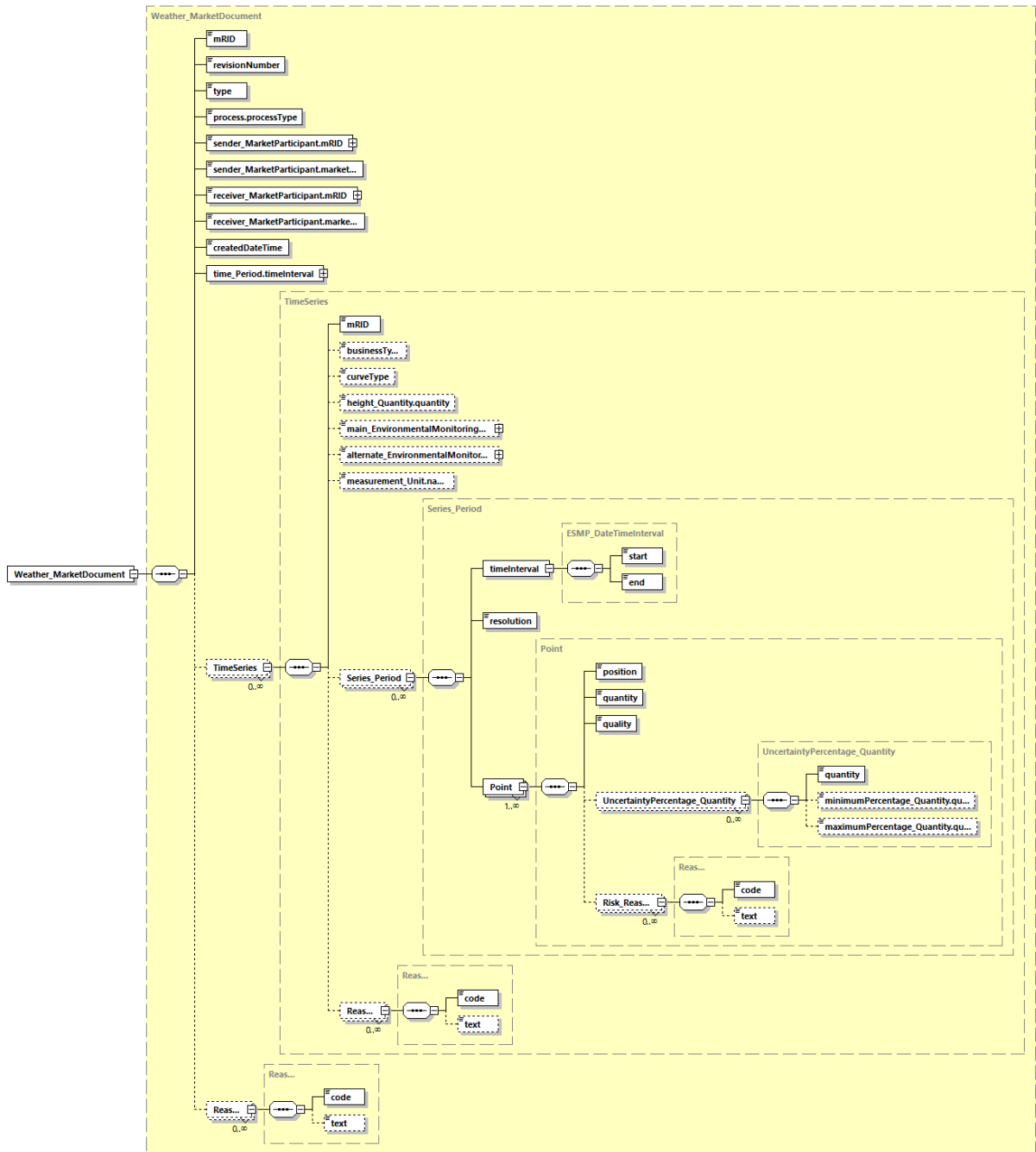
154 2.2.4 Datatypes

155 The list of datatypes used for the Weather assembly model is as follows:

- 156 • ESMP_DateTimeInterval compound
- 157 • BusinessKind_String datatype, codelist BusinessTypeList
- 158 • CurveType_String datatype, codelist CurveTypeList
- 159 • ESMP_DateTime datatype
- 160 • ESMPVersion_String datatype
- 161 • ID_String datatype
- 162 • MarketRoleKind_String datatype, codelist RoleTypeList
- 163 • MeasurementUnitKind_String datatype, codelist UnitOfMeasureTypeList
- 164 • MessageKind_String datatype, codelist MessageTypeList
- 165 • PartyID_String datatype, codelist CodingSchemeTypeList
- 166 • Position_Integer datatype
- 167 • ProcessKind_String datatype, codelist ProcessTypeList
- 168 • Quality_String datatype, codelist QualityTypeList
- 169 • ReasonCode_String datatype, codelist ReasonCodeTypeList
- 170 • ReasonText_String datatype
- 171 • ResourceID_String datatype, codelist CodingSchemeTypeList

- 172 • YMDHM_DateTime datatype
173

174 2.2.5 Weather_MarketDocument XML schema structure



175
 176

Figure 3 - Weather_MarketDocument schema structure

Generated by XMLSpy www.altova.com

177 **2.2.6 Weather_MarketDocument XML schema**

178

179 The schema to be used to validate XML instances is to be identified by:

180 urn:iec62325.351:tc57wg16:451-n:weatherdocument:1:1

181

```

182 <?xml version="1.0" encoding="utf-8"?>
183 <xs:schema xmlns:ecl="urn:entsoe.eu:wgedi:codelists"
184 xmlns="urn:iec62325.351:tc57wg16:451-n:weatherdocument:1:1"
185 xmlns:sawsdl="http://www.w3.org/ns/sawsdl"
186 xmlns:cimp="http://www.iec.ch/cimprofile"
187 xmlns:xs="http://www.w3.org/2001/XMLSchema"
188 targetNamespace="urn:iec62325.351:tc57wg16:451-n:weatherdocument:1:1"
189 elementFormDefault="qualified" attributeFormDefault="unqualified">
190   <xs:import namespace="urn:entsoe.eu:wgedi:codelists" schemaLocation="urn-
191 entsoe-eu-wgedi-codelists.xsd"/>
192   <xs:element name="Weather_MarketDocument" type="Weather_MarketDocument"/>
193   <xs:simpleType name="Position_Integer"
194 sawsdl:modelReference="http://iec.ch/TC57/2013/CIM-schema-cim16#Integer">
195     <xs:restriction base="xs:integer">
196       <xs:maxInclusive value="999999"/>
197       <xs:minInclusive value="1"/>
198     </xs:restriction>
199   </xs:simpleType>
200   <xs:simpleType name="Quality_String"
201 sawsdl:modelReference="http://iec.ch/TC57/2013/CIM-schema-cim16#String">
202     <xs:restriction base="ecl:QualityTypeList"/>
203   </xs:simpleType>
204   <xs:complexType name="Point"
205 sawsdl:modelReference="http://iec.ch/TC57/2013/CIM-schema-cim16#Point">
206     <xs:sequence>
207       <xs:element name="position" type="Position_Integer"
208 minOccurs="1" maxOccurs="1" sawsdl:modelReference="http://iec.ch/TC57/2013/CIM-
209 schema-cim16#Point.position"/>
210       <xs:element name="quantity" type="xs:decimal" minOccurs="1"
211 maxOccurs="1" sawsdl:modelReference="http://iec.ch/TC57/2013/CIM-schema-
212 cim16#Point.quantity"/>
213       <xs:element name="quality" type="Quality_String" minOccurs="1"
214 maxOccurs="1" sawsdl:modelReference="http://iec.ch/TC57/2013/CIM-schema-
215 cim16#Point.quality"/>
216       <xs:element name="UncertaintyPercentage_Quantity"
217 type="UncertaintyPercentage_Quantity" minOccurs="0" maxOccurs="unbounded"
218 sawsdl:modelReference="http://iec.ch/TC57/2013/CIM-schema-
219 cim16#Point.UncertaintyPercentage_Quantity"/>
220       <xs:element name="Risk_Reason" type="Reason" minOccurs="0"
221 maxOccurs="unbounded" sawsdl:modelReference="http://iec.ch/TC57/2013/CIM-schema-
222 cim16#Point.Risk_Reason"/>
223     </xs:sequence>
224   </xs:complexType>
225   <xs:simpleType name="ReasonCode_String"
226 sawsdl:modelReference="http://iec.ch/TC57/2013/CIM-schema-cim16#String">
227     <xs:restriction base="ecl:ReasonCodeTypeList"/>
228   </xs:simpleType>

```



```

229     <xs:simpleType name="ReasonText_String"
230 sawsdl:modelReference="http://iec.ch/TC57/2013/CIM-schema-cim16#String">
231     <xs:restriction base="xs:string">
232         <xs:maxLength value="512"/>
233     </xs:restriction>
234 </xs:simpleType>
235 <xs:complexType name="Reason"
236 sawsdl:modelReference="http://iec.ch/TC57/2013/CIM-schema-cim16#Reason">
237     <xs:sequence>
238         <xs:element name="code" type="ReasonCode_String" minOccurs="1"
239 maxOccurs="1" sawsdl:modelReference="http://iec.ch/TC57/2013/CIM-schema-
240 cim16#Reason.code"/>
241         <xs:element name="text" type="ReasonText_String" minOccurs="0"
242 maxOccurs="1" sawsdl:modelReference="http://iec.ch/TC57/2013/CIM-schema-
243 cim16#Reason.text"/>
244     </xs:sequence>
245 </xs:complexType>
246 <xs:simpleType name="YMDHM_DateTime"
247 sawsdl:modelReference="http://iec.ch/TC57/2013/CIM-schema-cim16#DateTime">
248     <xs:restriction base="xs:string">
249         <xs:pattern value="((([0-9]{4})[\-](0[13578]|1[02]))[\-](0[1-
250 9]|[12][0-9]|3[01])|([0-9]{4})[\-]((0[469])|(11))[\-](0[1-9]|[12][0-
251 9]|30))T(([01][0-9]|2[0-3]):[0-5][0-
252 9])Z)|((([13579][26][02468][048]|([13579][01345789](0)[48]|([13579][01345789][2468][0
253 48]|([02468][048][02468][048]|([02468][1235679](0)[48]|([02468][1235679][2468][048]|([
254 0-9][0-9][13579][26])[\-](02)[\-](0[1-9]|1[0-9]|2[0-9])T(([01][0-9]|2[0-3]):[0-
255 5][0-
256 9])Z)|((([13579][26][02468][1235679]|([13579][01345789](0)[01235679]|([13579][0134578
257 9][2468][1235679]|([02468][048][02468][1235679]|([02468][1235679](0)[01235679]|([0246
258 8][1235679][2468][1235679]|([0-9][0-9][13579][01345789]))[\-](02)[\-](0[1-9]|1[0-
259 9]|2[0-8])T(([01][0-9]|2[0-3]):[0-5][0-9])Z)"/>
260     </xs:restriction>
261 </xs:simpleType>
262 <xs:complexType name="ESMP_DateTimeInterval"
263 sawsdl:modelReference="http://iec.ch/TC57/2013/CIM-schema-cim16#DateTimeInterval">
264     <xs:sequence>
265         <xs:element name="start" type="YMDHM_DateTime" minOccurs="1"
266 maxOccurs="1" sawsdl:modelReference="http://iec.ch/TC57/2013/CIM-schema-
267 cim16#DateTimeInterval.start"/>
268         <xs:element name="end" type="YMDHM_DateTime" minOccurs="1"
269 maxOccurs="1" sawsdl:modelReference="http://iec.ch/TC57/2013/CIM-schema-
270 cim16#DateTimeInterval.end"/>
271     </xs:sequence>
272 </xs:complexType>
273 <xs:complexType name="Series_Period"
274 sawsdl:modelReference="http://iec.ch/TC57/2013/CIM-schema-cim16#Period">
275     <xs:sequence>
276         <xs:element name="timeInterval" type="ESMP_DateTimeInterval"
277 minOccurs="1" maxOccurs="1" sawsdl:modelReference="http://iec.ch/TC57/2013/CIM-
278 schema-cim16#Period.timeInterval"/>
279         <xs:element name="resolution" type="xs:duration" minOccurs="1"
280 maxOccurs="1" sawsdl:modelReference="http://iec.ch/TC57/2013/CIM-schema-
281 cim16#Period.resolution"/>
282         <xs:element name="Point" type="Point" minOccurs="1"
283 maxOccurs="unbounded" sawsdl:modelReference="http://iec.ch/TC57/2013/CIM-schema-
284 cim16#Period.Point"/>

```

```

285         </xs:sequence>
286     </xs:complexType>
287     <xs:simpleType name="ID_String"
288 sawsdl:modelReference="http://iec.ch/TC57/2013/CIM-schema-cim16#String">
289         <xs:restriction base="xs:string">
290             <xs:maxLength value="60"/>
291         </xs:restriction>
292     </xs:simpleType>
293     <xs:simpleType name="BusinessKind_String"
294 sawsdl:modelReference="http://iec.ch/TC57/2013/CIM-schema-cim16#String">
295         <xs:restriction base="ecl:BusinessTypeList"/>
296     </xs:simpleType>
297     <xs:simpleType name="CurveType_String"
298 sawsdl:modelReference="http://iec.ch/TC57/2013/CIM-schema-cim16#String">
299         <xs:restriction base="ecl:CurveTypeList"/>
300     </xs:simpleType>
301     <xs:simpleType name="ResourceID_String-base"
302 sawsdl:modelReference="http://iec.ch/TC57/2013/CIM-schema-cim16#String">
303         <xs:restriction base="xs:string">
304             <xs:maxLength value="60"/>
305         </xs:restriction>
306     </xs:simpleType>
307     <xs:complexType name="ResourceID_String"
308 sawsdl:modelReference="http://iec.ch/TC57/2013/CIM-schema-cim16#String">
309         <xs:simpleContent>
310             <xs:extension base="ResourceID_String-base">
311                 <xs:attribute name="codingScheme"
312 type="ecl:CodingSchemeTypeList" use="required"/>
313             </xs:extension>
314         </xs:simpleContent>
315     </xs:complexType>
316     <xs:simpleType name="MeasurementUnitKind_String"
317 sawsdl:modelReference="http://iec.ch/TC57/2013/CIM-schema-cim16#String">
318         <xs:restriction base="ecl:UnitOfMeasureTypeList"/>
319     </xs:simpleType>
320     <xs:complexType name="TimeSeries"
321 sawsdl:modelReference="http://iec.ch/TC57/2013/CIM-schema-cim16#TimeSeries">
322         <xs:sequence>
323             <xs:element name="mRID" type="ID_String" minOccurs="1"
324 maxOccurs="1" sawsdl:modelReference="http://iec.ch/TC57/2013/CIM-schema-
325 cim16#IdentifiedObject.mRID"/>
326             <xs:element name="businessType" type="BusinessKind_String"
327 minOccurs="0" maxOccurs="1" sawsdl:modelReference="http://iec.ch/TC57/2013/CIM-
328 schema-cim16#TimeSeries.businessType"/>
329             <xs:element name="curveType" type="CurveType_String"
330 minOccurs="0" maxOccurs="1" sawsdl:modelReference="http://iec.ch/TC57/2013/CIM-
331 schema-cim16#TimeSeries.curveType"/>
332             <xs:element name="height_Quantity.quantity" type="xs:decimal"
333 minOccurs="0" maxOccurs="1" sawsdl:modelReference="http://iec.ch/TC57/2013/CIM-
334 schema-cim16#Quantity.quantity"/>
335             <xs:element name="main_EnvironmentalMonitoringStation.mRID"
336 type="ResourceID_String" minOccurs="0" maxOccurs="1"
337 sawsdl:modelReference="http://iec.ch/TC57/2013/CIM-schema-
338 cim16#IdentifiedObject.mRID"/>
339             <xs:element
340 name="alternate_EnvironmentalMonitoringStation.mRID" type="ResourceID_String"

```

```

341 minOccurs="0" maxOccurs="1" sawsdl:modelReference="http://iec.ch/TC57/2013/CIM-
342 schema-cim16#IdentifiedObject.mRID"/>
343     <xs:element name="measurement_Unit.name"
344 type="MeasurementUnitKind_String" minOccurs="0" maxOccurs="1"
345 sawsdl:modelReference="http://iec.ch/TC57/2013/CIM-schema-cim16#Unit.name"/>
346     <xs:element name="Series_Period" type="Series_Period"
347 minOccurs="0" maxOccurs="unbounded"
348 sawsdl:modelReference="http://iec.ch/TC57/2013/CIM-schema-
349 cim16#TimeSeries.Series_Period"/>
350     <xs:element name="Reason" type="Reason" minOccurs="0"
351 maxOccurs="unbounded" sawsdl:modelReference="http://iec.ch/TC57/2013/CIM-schema-
352 cim16#TimeSeries.Reason"/>
353     </xs:sequence>
354 </xs:complexType>
355 <xs:complexType name="UncertaintyPercentage_Quantity"
356 sawsdl:modelReference="http://iec.ch/TC57/2013/CIM-schema-cim16#Quantity">
357     <xs:sequence>
358         <xs:element name="quantity" type="xs:decimal" minOccurs="1"
359 maxOccurs="1" sawsdl:modelReference="http://iec.ch/TC57/2013/CIM-schema-
360 cim16#Quantity.quantity"/>
361         <xs:element name="minimumPercentage_Quantity.quantity"
362 type="xs:decimal" minOccurs="0" maxOccurs="1"
363 sawsdl:modelReference="http://iec.ch/TC57/2013/CIM-schema-
364 cim16#Quantity.quantity"/>
365         <xs:element name="maximumPercentage_Quantity.quantity"
366 type="xs:decimal" minOccurs="0" maxOccurs="1"
367 sawsdl:modelReference="http://iec.ch/TC57/2013/CIM-schema-
368 cim16#Quantity.quantity"/>
369     </xs:sequence>
370 </xs:complexType>
371 <xs:simpleType name="ESMPVersion_String"
372 sawsdl:modelReference="http://iec.ch/TC57/2013/CIM-schema-cim16#String">
373     <xs:restriction base="xs:string">
374         <xs:pattern value="[1-9]([0-9]){0,2}"/>
375     </xs:restriction>
376 </xs:simpleType>
377 <xs:simpleType name="MessageKind_String"
378 sawsdl:modelReference="http://iec.ch/TC57/2013/CIM-schema-cim16#String">
379     <xs:restriction base="ecl:MessageTypeList"/>
380 </xs:simpleType>
381 <xs:simpleType name="ProcessKind_String"
382 sawsdl:modelReference="http://iec.ch/TC57/2013/CIM-schema-cim16#String">
383     <xs:restriction base="ecl:ProcessTypeList"/>
384 </xs:simpleType>
385 <xs:simpleType name="PartyID_String-base"
386 sawsdl:modelReference="http://iec.ch/TC57/2013/CIM-schema-cim16#String">
387     <xs:restriction base="xs:string">
388         <xs:maxLength value="16"/>
389     </xs:restriction>
390 </xs:simpleType>
391 <xs:complexType name="PartyID_String"
392 sawsdl:modelReference="http://iec.ch/TC57/2013/CIM-schema-cim16#String">
393     <xs:simpleContent>
394         <xs:extension base="PartyID_String-base">
395             <xs:attribute name="codingScheme"
396 type="ecl:CodingSchemeTypeList" use="required"/>

```

```

397         </xs:extension>
398     </xs:simpleContent>
399 </xs:complexType>
400 <xs:simpleType name="MarketRoleKind_String"
401 sawsdl:modelReference="http://iec.ch/TC57/2013/CIM-schema-cim16#String">
402     <xs:restriction base="ecl:RoleTypeList"/>
403 </xs:simpleType>
404 <xs:simpleType name="ESMP_DateTime"
405 sawsdl:modelReference="http://iec.ch/TC57/2013/CIM-schema-cim16#DateTime">
406     <xs:restriction base="xs:dateTime">
407         <xs:pattern value="((([0-9]{4})[\-](0[13578]|1[02]))[\-](0[1-
408 9]|[12][0-9]|3[01]))|([0-9]{4})[\-]((0[469])|(11))[\-](0[1-9]|[12][0-
409 9]|30))T((([01][0-9]|2[0-3]):[0-5][0-9]:[0-5][0-
410 9])Z)|((([13579][26][02468][048]|[13579][01345789](0)[48]|[13579][01345789][2468][0
411 48]|[02468][048][02468][048]|[02468][1235679](0)[48]|[02468][1235679][2468][048]|[
412 0-9][0-9][13579][26])[\-](02)[\-](0[1-9]|1[0-9]|2[0-9])T((([01][0-9]|2[0-3]):[0-
413 5][0-9]:[0-5][0-
414 9])Z)|((([13579][26][02468][1235679]|[13579][01345789](0)[01235679]|[13579][0134578
415 9][2468][1235679]|[02468][048][02468][1235679]|[02468][1235679](0)[01235679]|[0246
416 8][1235679][2468][1235679]|[0-9][0-9][13579][01345789])[\-](02)[\-](0[1-9]|1[0-
417 9]|2[0-8])T((([01][0-9]|2[0-3]):[0-5][0-9]:[0-5][0-9])Z)"/>
418     </xs:restriction>
419 </xs:simpleType>
420 <xs:complexType name="Weather_MarketDocument"
421 sawsdl:modelReference="http://iec.ch/TC57/2013/CIM-schema-cim16#MarketDocument">
422     <xs:sequence>
423         <xs:element name="mRID" type="ID_String" minOccurs="1"
424 maxOccurs="1" sawsdl:modelReference="http://iec.ch/TC57/2013/CIM-schema-
425 cim16#IdentifiedObject.mRID"/>
426         <xs:element name="revisionNumber" type="ESMPVersion_String"
427 minOccurs="1" maxOccurs="1" sawsdl:modelReference="http://iec.ch/TC57/2013/CIM-
428 schema-cim16#Document.revisionNumber"/>
429         <xs:element name="type" type="MessageKind_String" minOccurs="1"
430 maxOccurs="1" sawsdl:modelReference="http://iec.ch/TC57/2013/CIM-schema-
431 cim16#Document.type"/>
432         <xs:element name="process.processType"
433 type="ProcessKind_String" minOccurs="1" maxOccurs="1"
434 sawsdl:modelReference="http://iec.ch/TC57/2013/CIM-schema-
435 cim16#Process.processType"/>
436         <xs:element name="sender_MarketParticipant.mRID"
437 type="PartyID_String" minOccurs="1" maxOccurs="1"
438 sawsdl:modelReference="http://iec.ch/TC57/2013/CIM-schema-
439 cim16#IdentifiedObject.mRID"/>
440         <xs:element name="sender_MarketParticipant.marketRole.type"
441 type="MarketRoleKind_String" minOccurs="1" maxOccurs="1"
442 sawsdl:modelReference="http://iec.ch/TC57/2013/CIM-schema-cim16#MarketRole.type"/>
443         <xs:element name="receiver_MarketParticipant.mRID"
444 type="PartyID_String" minOccurs="1" maxOccurs="1"
445 sawsdl:modelReference="http://iec.ch/TC57/2013/CIM-schema-
446 cim16#IdentifiedObject.mRID"/>
447         <xs:element name="receiver_MarketParticipant.marketRole.type"
448 type="MarketRoleKind_String" minOccurs="1" maxOccurs="1"
449 sawsdl:modelReference="http://iec.ch/TC57/2013/CIM-schema-cim16#MarketRole.type"/>
450         <xs:element name="createdDateTime" type="ESMP_DateTime"
451 minOccurs="1" maxOccurs="1" sawsdl:modelReference="http://iec.ch/TC57/2013/CIM-
452 schema-cim16#Document.createdDateTime"/>

```

```
453         <xs:element name="time_Period.timeInterval"  
454 type="ESMP_DateTimeInterval" minOccurs="1" maxOccurs="1"  
455 sawsdl:modelReference="http://iec.ch/TC57/2013/CIM-schema-  
456 cim16#Period.timeInterval"/>  
457         <xs:element name="TimeSeries" type="TimeSeries" minOccurs="0"  
458 maxOccurs="unbounded" sawsdl:modelReference="http://iec.ch/TC57/2013/CIM-schema-  
459 cim16#MarketDocument.TimeSeries"/>  
460         <xs:element name="Reason" type="Reason" minOccurs="0"  
461 maxOccurs="unbounded" sawsdl:modelReference="http://iec.ch/TC57/2013/CIM-schema-  
462 cim16#MarketDocument.Reason"/>  
463     </xs:sequence>  
464 </xs:complexType>  
465 </xs:schema>  
466
```