



European Network of
Transmission System Operators
for Electricity

Common Platform for Replacement Reserves

IMPLEMENTATION GUIDE

2019-10-30

VERSION 1.1

2 Copyright notice:

3 **Copyright © ENTSO-E. All Rights Reserved.**

4 This document and its whole translations may be copied and furnished to others, and
5 derivative works that comment on or otherwise explain it or assist in its implementation may
6 be prepared, copied, published and distributed, in whole or in part, without restriction of any
7 kind, provided that the above copyright notice and this paragraph are included on all such
8 copies and derivative works. However, this document itself may not be modified in any way,
9 except for literal and whole translation into languages other than English and under all
10 circumstances, the copyright notice or references to ENTSO-E may not be removed.

11 This document and the information contained herein is provided on an “as is” basis.

12 **ENTSO-E DISCLAIMS ALL WARRANTIES, EXPRESS OR IMPLIED, INCLUDING BUT NOT**
13 **LIMITED TO ANY WARRANTY THAT THE USE OF THE INFORMATION HEREIN WILL NOT**
14 **INFRINGE ANY RIGHTS OR ANY IMPLIED WARRANTIES OF MERCHANTABILITY OR**
15 **FITNESS FOR A PARTICULAR PURPOSE.**

16 **This document is maintained by the TERRE project team with the support of CIM EG.**
17 **Comments or remarks are to be provided at cim@entsoe.eu**

18 **NOTE CONCERNING WORDING USED IN THIS DOCUMENT**

19 The force of the following words is modified by the requirement level of the document in which
20 they are used.

- 21 • SHALL: This word, or the terms “REQUIRED” or “MUST”, means that the definition is an
22 absolute requirement of the specification.
- 23 • SHALL NOT: This phrase, or the phrase “MUST NOT”, means that the definition is an
24 absolute prohibition of the specification.
- 25 • SHOULD: This word, or the adjective “RECOMMENDED”, means that there may exist valid
26 reasons in particular circumstances to ignore a particular item, but the full implications
27 shall be understood and carefully weighed before choosing a different course.
- 28 • SHOULD NOT: This phrase, or the phrase “NOT RECOMMENDED”, means that there may
29 exist valid reasons in particular circumstances when the particular behaviour is acceptable
30 or even useful, but the full implications should be understood and the case carefully
31 weighed before implementing any behaviour described with this label.
- 32 • MAY: This word, or the adjective “OPTIONAL”, means that an item is truly optional. One
33 vendor may choose to include the item because a particular marketplace requires it or
34 because the vendor feels that it enhances the product while another vendor may omit the
35 same item. An implementation which does not include a particular option SHALL be
36 prepared to interoperate with another implementation which does include the option,
37 though perhaps with reduced functionality. In the same vein an implementation which does
38 include a particular option SHALL be prepared to interoperate with another implementation
39 which does not include the option (except, of course, for the feature the option provides.).

Revision History

Version	Release	Date	Comments
1	0	2018-09-27	First version
1	1	2019-10-30	<p>Removed all references to mFRR as there will be a dedicated implementation guide for the mFRR platform. Removed settlement for inelastic need netting and price divergence. Clarified that resolution shall coincide with border scheduling step for XB capacity and resulting schedules. Specified reason codes for declaring bid as unavailable. Editorial corrections, aligned order of attributes in tables with XSDs.</p> <p>Net positions reported to PEVF and TSO will exceptionally and temporarily be provided per control area for Terna.</p> <p>Resulting CMOL will always be sent in a single document, no matter whether interconnector flow constraints were applied or not. Settlement mode shall be indicated by new attribute paymentTerms. Activation purpose shall be declared with reason codes for each activated offer or satisfied elastic need. The offered/requested price shall be included in the Energy_price.amount attribute which earlier was unused.</p> <p>Specified coding scheme.</p> <p>Corrected code related to attribute cancelledTS.</p> <p>Approved by MC</p>

41	CONTENTS		
42	Copyright notice:.....		2
43	Revision History.....		3
44	CONTENTS		4
45	1 Introduction		6
46	2 Scope.....		6
47	3 Normative references		6
48	4 Terms and definitions		8
49	5 The replacement reserve business process for standard products		8
50	5.1 General overview		8
51	5.2 Overall business context.....		8
52	5.2.1 Final ATC		9
53	5.2.2 HVDC and AC constraints.....		10
54	5.2.3 HVDC schedules		10
55	5.2.4 TSO reserve offers and needs		10
56	5.2.5 Accepted needs and offers to be activated		10
57	5.2.6 Cross border schedules		10
58	5.2.7 Net position		10
59	5.2.8 Clearing prices		10
60	5.2.9 Remaining ATC		10
61	5.2.10 Transparency reporting.....		10
62	5.2.11 Invoicing and financial data		10
63	5.3 Business rules		10
64	5.3.1 General rules.....		10
65	5.3.2 Dependencies governing the Capacity_MarketDocument		12
66	5.3.3 Dependencies governing the HVDCLink_marketDocument		14
67	5.3.4 Dependencies governing the ReserveBid_MarketDocument.....		17
68	5.3.5 Price payment table.....		26
69	5.3.6 Dependencies governing the MeritOrderList_MarketDocument		27
70	5.3.7 Dependencies governing the Schedule_MarketDocument		31
71	5.3.8 Dependencies governing the		
72	EnergyAccount_MarketDocument		34
73	5.3.9 Financial amount table.....		35
74	5.3.10 Dependencies governing the Balancing_MarketDocument		36
75	5.3.11 Dependencies governing the Reporting_MarketDocument		42
76	6 Contextual and assembly models		44
77	6.1 Capacity market document.....		44
78	6.2 HVDCLink market document		44
79	6.3 Reserve bid market document.....		44
80	6.4 Merit order list market document		44
81	6.5 Schedule market document		44
82	6.6 Energy account market document		44
83	6.7 Balancing market document		44
84	6.8 Reporting market document		44
85	6.9 Acknowledgement document.....		44
86	6.10 Problem statement document.....		44
87	7 XML schema.....		45

88	
89	List of figures
90	Figure 1: Replacement reserve process overview8
91	Figure 2: The replacement reserve process sequence diagram9
92	
93	List of tables
94	Table 1 – Capacity market document dependency table 12
95	Table 2 - HVDC link market document dependency table 14
96	Table 3 – Reserve bid market document dependency table (submissions to common
97	platform) 17
98	Table 4 – Reserve bid market document dependency table (submissions to
99	transparency platform) 21
100	Table 5 - Price payment table26
101	Table 6 - merit order list market document dependency table27
102	Table 7 - Schedule market document dependency table31
103	Table 8 – Energy account market document dependency table34
104	Table 9 – Financial amount table35
105	Table 10 – Balancing market document dependency table (submission of clearing
106	prices to transparency platform)36
107	Table 11 – Balancing market document dependency table (submission of clearing
108	prices to TSO)37
109	Table 12 – Balancing market document dependency table (submission of aggregated
110	bids to transparency platform).....39
111	Table 13 – Reporting market document dependency table42
112	

113 1 Introduction

114 This document was drafted based on IEC 62325 series. In particular, the IEC 62325-450
115 methodology was applied to develop the conceptual and assembly models.

116 2 Scope

117 The Trans European replacement reserves exchange (TERRE) project is a pilot project for the
118 exchange of replacement reserve balancing energy. It is eventually targeted to become the
119 common platform mandated under the electricity balancing guideline (Network Code)

120 The aims of the project are to permit:

- 121 • The reduction of balancing costs through the introduction of an optimization based
122 matching process;
- 123 • The increase of the available balancing energy for each TSO with positive impact on
124 the security of supply and on the integration of renewable energy in the electric
125 systems.
- 126 • A more efficient use of cross border interconnectors after Intraday Markets.

127 3 Normative references

128 The following documents, in whole or in part, are normatively referenced in this document and
129 are indispensable for its application. For dated references, only the edition cited applies. For
130 undated references, the latest edition of the referenced document (including any
131 amendments) applies.

132 IEC TS 61970-2, *Energy management system application program interface (EMS-API) –Part 2:
133 Glossary*

134 IEC 62325-301, *Framework for energy market communications – Part 301: Common information
135 model (CIM) extensions for markets*

136 IEC 62325-351, *Framework for energy market communications – Part 351: CIM European market
137 model exchange profile*

138 IEC 62325-450, *Framework for energy market communications – Part 450: Profile and context
139 modeling rules*

140 IEC 62325-451-1, *Framework for energy market communications – Part 451-1: Acknowledgement
141 business process and contextual model for CIM European market*

142 IEC 62325-451-2, *Framework for energy market communications – Part 451-2: Scheduling
143 business process and contextual model for CIM European market*

144 IEC 62325-451-3, *Framework for energy market communications – Part 451-3: Transmission
145 capacity allocation business process (explicit or implicit auction) and contextual model for
146 CIM European market*

147 IEC 62325-451-4, *Framework for energy market communications – Part 451-4: Settlement
148 and reconciliation business process and contextual model for CIM European market*

149 IEC 62325-451-6, *Framework for energy market communications – Part 451-6: Transparency
150 business process and contextual model for CIM European market*

151 IEC 62325-451-7, *Framework for energy market communications – Part 451-7: Reserve resource
152 business process and contextual model for CIM European market*

153 *ENTSO-E RG CE scheduling reporting process implementation guide*

154 *ENTSO-E Manual of Procedures for central Transparency Platform v3r2*

155 *Harmonised role model 2019-01*

156 **4 Terms and definitions**

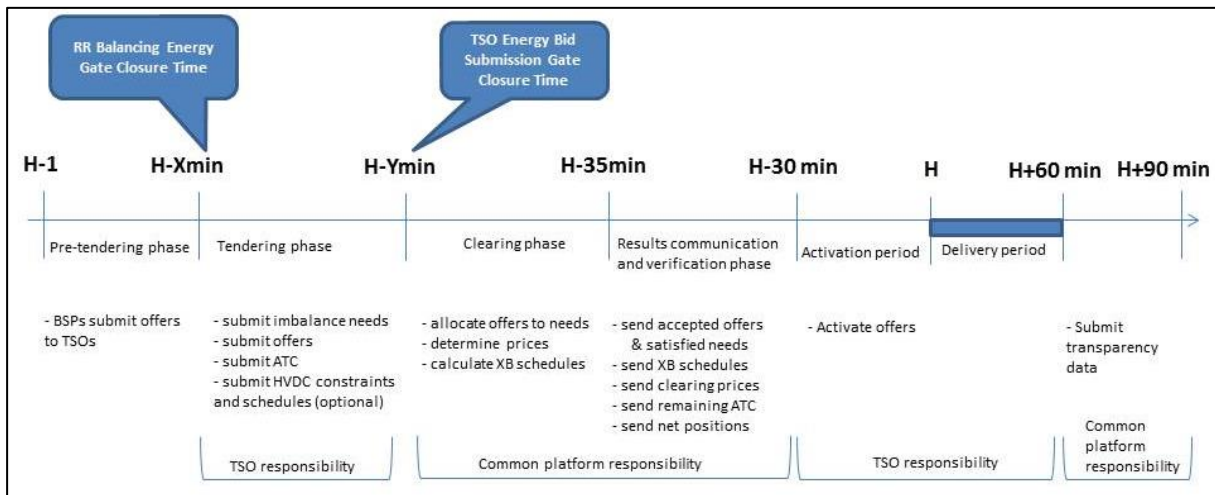
157 **4.1 RR**

158 **Replacement reserves; The reserves used to restore/support the required level of**
 159 **FRR to be prepared for additional system imbalances. This category includes**
 160 **operating reserves with activation time from Time to Restore Frequency up to hours.**
 161

162 **5 The replacement reserve business process for standard products**

163 **5.1 General overview**

164 The common platform has a number of operational phases that are carried out throughout the
 165 day. Initially these phases will be carried out over a three hour period.



166

Figure 1: Replacement reserve process overview

167

168 The common platform’s operational phases outlined in Figure 1 exhibits the timing in order to
 169 satisfy a one hour delivery period.

170 Typically at H-1 the Balance Service Providers (BSP) may during a pre-tendering phase
 171 submit offers to the TSOs.

172 At the balancing energy gate closure time H-Xmin the tendering phase begins on the common
 173 platform. Each TSO submits to the common platform the replacement reserve (RR) imbalance
 174 needs, the offers and the available transfer capacity (ATC).

175 At the gate closure of the tendering phase H-Ymin the common platform begins the clearing
 176 phase and allocates the offers to satisfy the RR needs, fixes the prices and calculates the
 177 cross border schedules.

178 At H-35 the resulting accepted offers, satisfied needs, cross border schedules and remaining
 179 ATC are submitted to the interested parties and are verified.

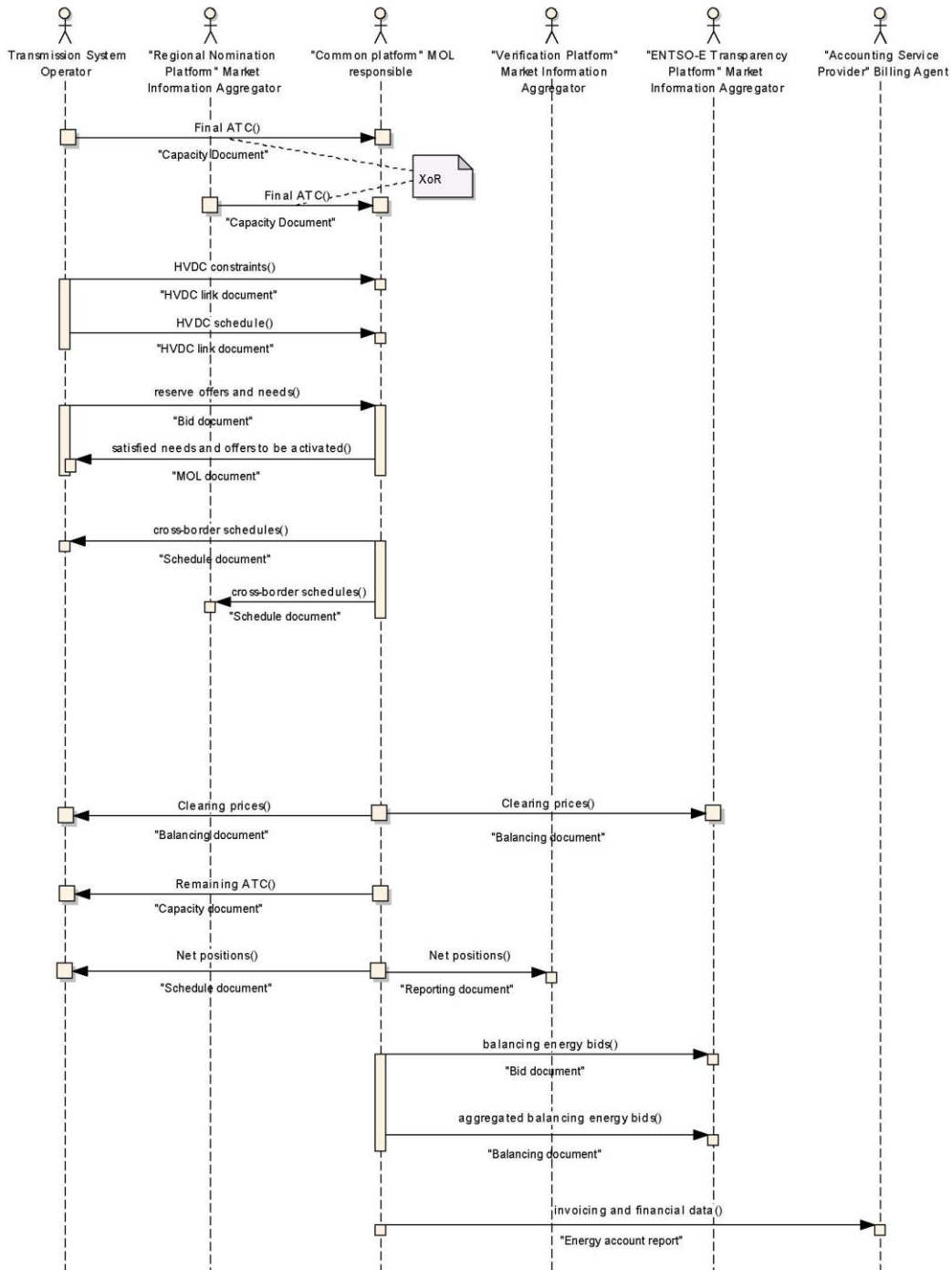
180 At H-30 the activation phase begins where each TSO activates the offers under its
 181 responsibility that are needed in order to satisfy the overall needs.

182 At H the activation for one hour occurs.

183 At H+90 minutes the latest, all the information required for transparency reporting purposes is
 184 provided.

185 **5.2 Overall business context**

186 This Implementation Guide provides the means of exchanging between the common platform
 187 and all concerned parties the information necessary to satisfy replacement reserve
 188 requirements as outlined in paragraph 4.1.



189

190

Figure 2: The replacement reserve process sequence diagram

191 The information flows are outlined in the following paragraphs.

192 **5.2.1 Final ATC**

193 The participating TSOs provide to the common platform during the tendering phase the final
 194 available transfer capacity (ATC). This information will be used during the calculation of the
 195 replacement reserves for the coming delivery period. In some cases participating TSOs may
 196 provide the ATC through a regional nomination platform.

197 **5.2.2 HVDC and AC constraints**

198 The TSOs with high voltage direct current (HVDC) lines provide to the common platform the
199 constraints in relation to the lines in question. Optionally constraints on AC links may also be
200 provided to the platform.

201 **5.2.3 HVDC schedules**

202 The TSOs with high voltage direct current (HVDC) lines provide to the common platform the
203 schedules in relation to the lines in question and where HVDC constraints have also been
204 transmitted.

205 **5.2.4 TSO reserve offers and needs**

206 During the tendering phase the participating TSOs provide to the common platform the list of
207 all the offers for reserve use as well as the list of all the reserve needs for the coming delivery
208 period.

209 **5.2.5 Accepted needs and offers to be activated**

210 The common platform, after carrying out the analysis of the submitted data during the clearing
211 phase, sends to each participating TSO the needs that will be met as well as those which
212 cannot be satisfied. In addition it will provide the offers that have to be activated within the
213 TSO area.

214

215 **5.2.6 Cross border schedules**

216 The common platform informs the participating TSOs and the regional nomination platform of
217 the schedules that have to be included in the coming scheduling process.

218 **5.2.7 Net position**

219 The common platform informs the pan-European verification platform of the net position per
220 control area for the schedule day of all participating TSOs, resulting from the flows on AC
221 interconnectors. Flows on HVDC interconnectors are not taken into account.

222 Each TSO receives the net position for its control area. Flows on AC interconnectors are
223 taken into account but flows on HVDC interconnectors are excluded.

224 **5.2.8 Clearing prices**

225 The common platform provides the clearing prices to the TSOs.

226 **5.2.9 Remaining ATC**

227 The common platform notifies the participating TSOs of any ATC that remains unused at the
228 end of the process.

229 **5.2.10 Transparency reporting**

230 The common platform submits clearing prices, all energy balancing bids and an aggregation
231 of all energy balancing bids to the ENTSO-E central transparency platform for publication.

232 **5.2.11 Invoicing and financial data**

233 The common platform provides the financial information to the billing agent that will carry out
234 financial settlement between the TSOs. Any TSO may optionally subscribe to this information
235 for reconciliation purposes.

236 **5.3 Business rules**

237 **5.3.1 General rules**

238 For each electronic data interchange defined in this document, an acknowledgement
239 document, as defined in IEC 62325-451-1, should be generated either accepting the whole
240 received document or rejecting it completely.

241 The business process described in this chapter will be executed separately for each region,
242 also referred to as virtual scheduling area. For Replacement Reserves, the following regions
243 shall apply:

Region	EIC code	Geographical scope
Western Europe	10Y1001C--00031A	UK-FR-CH-IT-ES-PT
Central Europe	10Y1001C--00030C	PL-CZ
Eastern Europe	10Y1001C--000328	HU-RO

244

245 In all documents the single applicable coding scheme shall be A01 = EIC coding scheme.

246

247 **5.3.2 Dependencies governing the Capacity_MarketDocument**

248 The capacity market document is used to provide the ATC that is available in a TSO area for a given period. Data for more than one border or
 249 interconnector may at the discretion of the data provider be conveyed in a single or separate documents. For a given border or interconnector,
 250 values must be provided for both directions in the same document. The capacity market document is also used by the common platform to inform
 251 the TSOs of any ATC that remains.

252 Table 1 provides the dependencies for the capacity market document.

253

Table 1 – Capacity market document dependency table

		Use	XSD requirements
Capacity_MarketDocument			
mRID	Unique identification of the Capacity Document	Used	Mandatory
revisionNumber	Initial transmission shall equal "1"	Used	Mandatory
type	A31 = Agreed capacity (used when submitting available capacity to common platform) A26 = Capacity document (used to transmit remaining capacity from the common platform to the TSOs)	Used	Mandatory
process.processType	A15 = Capacity determination	Used	Mandatory
sender_MarketParticipant.mRID	EIC of the Transmission System Operator when the document type = A31 EIC of the common platform Operator when the DocumentType = A26.	Used	Mandatory
sender_MarketParticipant.marketRole.type	A04 = System operator when the document type = A31 A35 = MOL responsible when the document type = A26	Used	Mandatory
receiver_MarketParticipant.mRID	EIC of the common platform Operator when the document type = A31: 10X1001C--00006N EIC of the Transmission System Operator when the document type = A26	Used	Mandatory
receiver_MarketParticipant.marketRole.type	A35 = MOL responsible Operator when the document type = A31 A04 = System operator when the document type = A26	Used	Mandatory
createdDateTime	Date and time of document creation	Used	Mandatory
period.timeInterval	The duration of the delivery period (initially 1 hour)	Used	Mandatory
domain.mRID	EIC of the region	Used	Mandatory

254

TimeSeries			
mRID	The unique identification of the time series within the document	Used	Mandatory
businessType	A26 = ATC	Used	Mandatory
product	8716867000016 = active power	Used	Mandatory
in_Domain.mRID	EIC identification of the scheduling area where the power is being put	Used	Mandatory
out_Domain.mRID	EIC identification of the scheduling area where the power is coming from	Used	Mandatory
measure_Unit.name	MAW = Megawatts	Used	Mandatory
auction.mRID	The identification of an auction specification	Not used	Conditional
auction.category	The category under which capacity is classified	Not used	Conditional
curveType	A01 = Sequential fixed size block	Used	Mandatory
connectingLine_RegisteredResource.mRID	The identification of a set of lines that connect two areas together. This is only used when specific tie lines have to be identified.	May be used	Conditional

Period			
timeInterval	A time interval of the same length as the delivery period (initially 1 hour)	Used	Mandatory
resolution	Shall coincide with the scheduling step of the border: PT60M PT30M PT15M	Used	Mandatory

Point			
position	Position within the time interval	Used	Mandatory
quantity	Quantity of ATC with 0.1 MW precision	used	Mandatory

Reason (associated with header and point)		Not used	Conditional
--	--	----------	-------------

256 **5.3.3 Dependencies governing the HVDCLink_marketDocument**

257 The HVDC link market document is used by the transmission system operator to provide all the HVDC constraints and schedules to the common
 258 platform. This document may optionally also be used by TSOs to provide constraints on AC links. For a given interconnector, schedules must be
 259 provided for both directions in the same file.

260 Table 2 provides the dependencies for the HVDC link market document.

261 **Table 2 - HVDC link market document dependency table**

		Constraint	schedule	XSD requirements
HVDCLink_MarketDocument				
mRID	Unique identification of the Schedule Document	Used	Used	Mandatory
revisionNumber	Initial transmission shall equal "1"	Used	Used	Mandatory
type	The coded type of a document. The document type describes the principal characteristic of the document.	A99 = HVDC link constraints	B02 HVDC schedule	Mandatory
process.processType	A02 = Intraday incremental	Used	Used	Mandatory
sender_MarketParticipant.mRID	EIC of the Transmission System Operator	Used	Used	Mandatory
sender_MarketParticipant.marketRole.type	A04 = System operator	Used	Used	Mandatory
receiver_MarketParticipant.mRID	EIC of the common platform Operator: 10X1001C--00006N	Used	Used	Mandatory
receiver_MarketParticipant.marketRole.type	A35 = MOL responsible	Used	Used	Mandatory
createdDateTime	Date and time of document creation	Used	Used	Mandatory
schedule_Period.timeInterval	The time interval covered by the schedule	Used	Used	Mandatory
docStatus	A01 = Intermediate A02 = Final	Used	Used	Mandatory
domain.mRID	EIC of the region	Used	Used	Mandatory

262

TimeSeries		Constraint	Schedule	
mRID	The unique identification of the time series within the document	Used	Used	Mandatory
businessType	B30 = HVDC settings	Used	Used	Mandatory
product	8716867000016 = active power	Used	Used	Mandatory
objectAggregation	A09 = DC link	Used	Used	Mandatory
connectingLine_RegisteredResource.mRID	The identification of the HVDC link or group of HVDC links. May also be used to identify an AC link.	Used	Used	Mandatory
hVDCMode_AttributeInstanceComponent.attribute	A01 = HVDC set point schedule	Used	Used	Conditional
out_Domain.mRID	EIC identification of the scheduling area where the product is being extracted	Used	Used	Conditional
in_Domain.mRID	EIC identification of the scheduling area where the product is being delivered	Used	Used	Conditional
measurement_Unit.name	MAW = Megawatts	Used	Used	Mandatory
curveType	A01 = Sequential fixed size block A03 = Variable block	Used	Used	Conditional
minimumExchange_Quantity.quantity	The minimum value of a power exchange range between the In_Domain and the Out_Domain of the timeseries.	Not used	Not used	Conditional
maximumExchange_Quantity.quantity	The maximum value of a power exchange range between the In_Domain and the Out_Domain of the timeseries.	Not used	Not used	Conditional

Series_Period				
timeInterval	A time interval of the length of the delivery period (initially 1 hour)	Used	Used	Mandatory
resolution	Shall coincide with the scheduling step of the border: PT60M PT30M PT15M	Used	Used	Mandatory

Point		Constraint	Schedule	
position	Position within the time interval	Used	Used	Mandatory
quantity	The value of the scheduled product. One of the directions must equal zero (net schedule). Precision is 0.1 MW.	Not used	Used	Conditional
minimum_Quantity.quantity	The minimum value of power exchange on the HVDC line (or AC link) for a scheduled point. Precision is 0.1 MW. Shall be zero if constraints are provided in both directions for a given position.	Used	Not used	Conditional
maximum_Quantity.quantity	The maximum value of power exchange on the HVDC line (or AC link) for a scheduled point. Precision is 0.1 MW.	Used	Not used	Conditional
optimum_Quantity.quantity	The value of the optimum power exchange on the HVDC line for a scheduled point.	Not used	Not used	Conditional

265 **5.3.4 Dependencies governing the ReserveBid_MarketDocument**

266 The reserve bid market document is used to provide all the information related to offers and needs that are submitted to the common platform. It is
 267 also used to submit all offers to the ENTSO-E central transparency platform.

268 All needs from a given TSO (elastic, inelastic and flexible needs) must be placed within a single document. Offers may be distributed among more
 269 than one document, at the discretion of the TSO.

270 If data provider wants to withdraw a single need or offer that already has been submitted to the platform, it is necessary to submit a higher version
 271 of the same document and exclude the corresponding time series.

272 Table 3 provides the dependencies for the reserve bid market document when TSOs submit offers and needs to the common platform.

273 **Table 3 – Reserve bid market document dependency table (submissions to common platform)**

		OFFER	NEED	XSD requirements
ReserveBid_MarketDocument				
mRID	Unique identification of the Bid Document	Used	Used	Mandatory
revisionNumber	Initial transmission shall equal "1"	Used	Used	Mandatory
type	A37 = Reserve Bid document	Used	Used	Mandatory
process.processType	A46 = Replacement reserve (RR)	Used	Used	Conditional
sender_MarketParticipant.mRID	EIC of the transmitting TSO	Used	Used	Mandatory
sender_MarketParticipant.marketRole.type	A04 = System Operator	Used	Used	Mandatory
receiver_MarketParticipant.mRID	EIC of common platform operator: 10X1001C--00006N	Used	Used	Mandatory
receiver_MarketParticipant.marketRole.type	A35 = MOL responsible	Used	Used	Mandatory
createdDateTime	Date and time of document creation	Used	Used	Mandatory
reserveBid_Period.timeInterval	The duration of the delivery period (initially 1 hour)	Used	Used	Mandatory
domain.mRID	EIC of region	Used	Used	Mandatory
subject_MarketParticipant.mRID	EIC of the transmitting TSO	Used	Used	Mandatory

subject_MarketParticipant.marketRole.type	A27 = Resource Provider	Used	Used	Mandatory
---	-------------------------	------	------	-----------

274

Bid_TimeSeries				
mRID	Unique identification of the bid assigned by the transmitting TSO	Used	Used	Mandatory
auction.mRID	Constant value of "AUCTION-RR". It identifies that the bid refers to the auction specifications for a replacement reserve tender. Other values may be added as the replacement reserve process further evolves.	Used	Used	Mandatory
businessType	B74 = Offer B75 = Need B90 = Flexible need	B74 = Offer	B75 = Need B90 = Flexible need	Mandatory
acquiring_Domain.mRID	For offers it corresponds to the EIC identification of the region. For needs it corresponds to the EIC identification of the sending TSO's scheduling area.	region	TSO's control area or scheduling area	Mandatory
connecting_Domain.mRID	For offers it corresponds to the EIC identification of the sending TSO's scheduling area providing the reserves. Associated multipart, linked and exclusive bids must be associated with the same scheduling area. For needs it corresponds to the EIC identification of the region providing the reserves	Used	Used	Mandatory
provider_MarketParticipant.mRID	The balance service provider (BSP) identification.	May be used	Not used	Conditional
quantity_Measure_Unit.name	MAW = Megawatts	Used	Used	Mandatory
currency_Unit.name	EUR = Euro. This currency is only provided in the case of a need where there is a price in the point class. Otherwise it is not used.	Used	May be used	Conditional
price_Measure_Unit.name	MWH = Megawatt hours. This unit of measure is only provided in the case of a need where there is a price in the point class. Otherwise it is not used	Used	May be used	Conditional
divisible	A01 = quantity may be reduced to the minimum activation quantity by increments of the StepIncrementQuantity A02 = No reduction possible on the quantity	Used	A01	Mandatory
linkedBidsIdentification	The identification used to associate bids that are to be linked together. If one bid is accepted then all others with the same identification must also be accepted. If the bid is not linked then the attribute is not used.	May be used. See note below.	Not used	Conditional
multipartBidIdentification	The identification used to associate multipart bids. If bid with flowDirection.direction=A01 (Up) is accepted then all associated bids with inferior price must also be accepted. If bid with flowDirection.direction=A02 (Down) is accepted then all associated bids with superior price must also be accepted. If the bid is not multipart then the attribute is not used.	May be used. See note below.	Not used	Conditional

exclusiveBidsIdentification	The identification used to associate exclusive bids. If bid is accepted then all others with same identification shall be ignored. If the bid is not exclusive then the attribute is not used.	May be used. See note below.	Not used	Conditional
blockBid	Not used. Redundant due to the existence of Divisible attribute.	Not used	Not used	Optional
status	A06 = Available A11 = Unavailable Associated multipart, linked and exclusive bids must have the same status.	Used	Not used	Conditional
priority	A sequential number indicating the priority of the bid in relation to other bids	Not used	Not used	Conditional
registeredResource.mRID	The identification of the resource used to provide the reserves	May be used	Not used	Conditional
flowDirection.direction	A01 = UP A02 = DOWN Refer to the price payment table for use in relation to price. Multipart offers shall have the same direction.	Used	Used	Mandatory
stepIncrementQuantity	Not used. For needs and divisible offers the input step increment has been harmonised to 1 MW.	Not used	Not used	Conditional
energyPrice_Measure_Unit.name	MWH = Megawatt hours	Not used	Not used	Conditional
marketAgreement.type	The type of the market agreement	Not used	Not used	Conditional
marketAgreement.mRID	Identification of the agreement with the resource provider	Not used	Not used	Conditional
marketAgreement.createdDateTime	Time stamp used to identify the date and time that a specific offer was received.	Not used	Not used	Conditional
activation_ConstraintDuration.duration	Not used	Not used	Not used	Conditional
resting_ConstraintDuration.duration	Not used	Not used	Not used	Conditional
minimum_ConstraintDuration.duration	Not used	Not used	Not used	Conditional

maximum_ConstraintDuration.duration	Not used	Not used	Not used	Conditional
standard_MarketProduct.marketProductType	Used when the bid refers to a standard product or a specific product that has been converted into a standard product: A01 = Standard product Associated multipart, linked and exclusive bids must have the same value.	Used	Not used	Conditional
original_MarketProduct.marketProductType	Used when the bid refers to a specific product or a specific product that has been converted into a standard product: A02 = Specific product A03 = Integrated scheduling process Associated multipart, linked and exclusive bids must have the same value.	May be used	Not used	Conditional
validity_Period.timeInterval	The period when the bid can be activated	Not used	Not used	Optional

275 Note: The attributes linkedBidIdentification, exclusiveBidIdentification and multipartBidIdentification are mutually exclusive and cannot be used in
 276 combination. Associated bids shall carry the same value in the identification attribute. For example: The document contains three bids that are
 277 linked – those three bids shall have the same value in the linkedBidIdentification attribute. The values used in these attributes must be unique within
 278 the document but may be reused in subsequently submitted documents.
 279

Period				
timeInterval	A time interval within the delivery period. Multipart offers shall have the same timeInterval. Linked offers must have a time interval of exactly 15 minutes. Linked offers may not overlap in time.	Used	Used	Mandatory
Resolution	PT60M PT30M PT15M	Used	Used	Mandatory
Point				
position	Position within the time interval	Used	Used	Mandatory
quantity.quantity	Quantity offered or needed with 1 MW precision. Multipart offers shall have constant quantity throughout the Period.	Quantity offered	Quantity needed	Mandatory
minimum_Quantity.quantity	Required if divisible = A01. Precision is 1 MW. Multipart offers shall have constant minimum quantity throughout the Period.	May be used	0	Conditional

price.amount	The price of the product. Precision is 0.01. Multipart offers shall have constant price throughout the Period. Note: Refer to the Price payment table for establishing who is paid.	The price of the offer	May be used to indicate the price cap set by the TSO	Conditional
energy_Price.amount	Not used	Not used	Not used	Conditional

AvailableMBA_Domain (Associated with time series)	Not used	Not used	Not used	Conditional
mRID				

Reason (associated with time series)	Note: This class is strictly associated with the status attribute that has the value of A11 = Unavailable.	May be used	Not used	Conditional
code	B46 = internal congestion B47 = operational security constraints	Used	Not used	
text	Textual information provided by the TSO	May be used	Not used	

280

281 Table 4 provides the dependencies for the reserve bid market document when the common platform submits offers to the ENTSO-E transparency
 282 platform. A separate document will be sent for every scheduling area.

283

Table 4 – Reserve bid market document dependency table (submissions to transparency platform)

		Use	XSD requirements
ReserveBid_MarketDocument			
mRID	Unique identification of the Bid Document	Used	Mandatory
revisionNumber	Initial transmission shall equal "1"	Used	Mandatory
type	A37 = Reserve Bid document	Used	Mandatory
process.processType	A46 = Replacement reserve (RR)	Used	Conditional
sender_MarketParticipant.mRID	EIC of common platform operator: 10X1001C--00006N	Used	Mandatory

sender_MarketParticipant.marketRole.type	A35 = MOL responsible	Used	Mandatory
receiver_MarketParticipant.mRID	10X1001A1001A450 = EIC of the ENTSO-E transparency platform	Used	Mandatory
receiver_MarketParticipant.marketRole.type	A32 = Market information aggregator	Used	Mandatory
createdDateTime	Date and time of document creation	Used	Mandatory
reserveBid_Period.timeInterval	The duration of the delivery period (initially 1 hour)	Used	Mandatory
domain.mRID	EIC of the region	Used	Mandatory
subject_MarketParticipant.mRID	EIC of common platform Operator	Used	Mandatory
subject_MarketParticipant.marketRole.type	A35 = MOL responsible	Used	Mandatory

284

BidTimeSeries			
mRID	Unique identification of the bid assigned by the transmitting TSO	Used	Mandatory
auction.mRID	Constant value of "AUCTION-RR". It identifies that the bid refers to the auction specifications for a replacement reserve tender	Used	Mandatory
businessType	B74 = Offer	Used	Mandatory
acquiring_Domain.mRID	EIC identification of the region	Used	Mandatory
connecting_Domain.mRID	EIC identification of the sending TSO's scheduling area providing the reserves	Used	Mandatory
provider_MarketParticipant.mRID	The balance service provider (BSP) identification	Not used	Conditional
quantity_Measure_Unit.name	MAW = Megawatts	Used	Mandatory
currency_Unit.name	EUR = Euro	Used	Conditional
price_Measure_Unit.name	MWH = Megawatt hours	Used	Conditional
divisible	A01 = quantity may be reduced to the minimum activation quantity A02 = No reduction possible on the quantity	Used	Mandatory
linkedBidsIdentification	Populated if the bid is linked	May be used	Conditional
multipartBidIdentification	Populated if the bid is multipart	May be used	Conditional
exclusiveBidsIdentification	Populated if the bid is exclusive	May be used	Conditional

blockBid	Not used. Redundant due to the existence of Divisible attribute.	Not used	Optional
status	A06 = Available A11 = Unavailable	Used	Conditional
priority	A sequential number indicating the priority of the bid in relation to other bids	Not used	Conditional
registeredResource.mRID	The identification of the resource used to provide the reserves	Not used	Conditional
flowDirection.direction	A01 = UP A02 = DOWN Refer to the price payment table for use in relation to price	Used	Mandatory
stepIncrementQuantity	Not used. For needs and divisible offers the input step increment has been harmonised to 1 MW.	Not used	Conditional
energyPrice_Measure_Unit.name	MWH = Megawatt hours	Not used	Conditional
marketAgreement.type	The type of the market agreement	Not used	Conditional
marketAgreement.mRID	Identification of the agreement with the resource provider	Not used	Conditional
marketAgreement.createdDateTime	Time stamp used to identify the date and time that a specific offer was received.	Not used	Conditional
activation_ConstraintDuration.duration	Not used	Not used	Conditional
resting_ConstraintDuration.duration	Not used	Not used	Conditional
minimum_ConstraintDuration.duration	Not used	Not used	Conditional
maximum_ConstraintDuration.duration	Not used	Not used	Conditional
standard_MarketProduct.marketProductType	Used when the bid refers to a standard product or a specific product that has been converted into a standard product: A01 = Standard product	Used	Conditional

original_MarketProduct.marketProductType	Used when the bid refers to a specific product that has been converted into a standard product: A02 = Specific product A03 = Integrated scheduling process	May be used	Conditional
validity_Period.timeInterval	The period when the bid can be activated	Used	Optional
Period			
timeInterval	A time interval within the delivery period	Used	Mandatory
resolution	PT15M	Used	Mandatory
Point			
position	Position within the time interval	Used	Mandatory
quantity.quantity	Quantity offered with 1 MW precision	Used	Mandatory
minimum_Quantity.quantity		Not used	Conditional
price.amount	The price of the product. Precision is 0.01. Refer to the Price payment table for establishing who is paid.	Used	Conditional
energy_Price.amount	Not used	Not used	Conditional
AvailableMBA_Domain (Associated with time series)	Not used	Not used	Conditional
mRID			
Reason (associated with time series)		Not used	Conditional
code		-	

text

-

285 **5.3.5 Price payment table**

286 Table 5 provides the domain owner that should pay the price indicated.

287 **Table 5 - Price payment table**

OFFERS					
acquiring_Domain.mRID	Domain where the reserve will be used	region	region	region	region
connecting_Domain.mRID	Domain providing the reserve	TSO control area	TSO control area	TSO control area	TSO control area
flowDirection.direction	Direction of the flow	UP	UP	DOWN	DOWN
price.amount	Price of the energy	>0	<0	>0	<0
Which domain owner pays		common platform	TSO	TSO	common platform
NEEDS					
acquiring_Domain.mRID	Domain where the reserve will be used	TSO control area	TSO control area	TSO control area	TSO control area
connecting_Domain.mRID	Domain providing the reserve	region	region	region	region
flowDirection.direction	Direction of the flow	UP	UP	DOWN	DOWN
price.amount	Price of the energy	>0	<0	>0	<0
Which domain owner pays		TSO	Common platform	Common platform	TSO

288

289 **5.3.6 Dependencies governing the MeritOrderList_MarketDocument**

290 The merit order list market document is used by the common platform to provide all the information related to the offers that been accepted as well
 291 the needs that have been satisfied.

292 Table 6 provides the dependencies for the merit order list market document.

293 **Table 6 - merit order list market document dependency table**

		OFFER	NEED	XSD requirements
MeritOrderList_MarketDocument				
mRID	Unique identification of the MOL Document	Used	Used	Mandatory
revisionNumber	Initial transmission shall equal "1"	Used	Used	Mandatory
type	A66 = Final MOL	Used	Used	Mandatory
process.processType	A46 = Replacement reserve (RR)	Used	Used	Conditional
sender_MarketParticipant.mRID	EIC of the common Operator: 10X1001C--00006N	Used	Used	Mandatory
sender_MarketParticipant.marketRole.type	A35 = MOL responsible	Used	Used	Mandatory
receiver_MarketParticipant.mRID	EIC of the Transmission System Operator	Used	Used	Mandatory
receiver_MarketParticipant.marketRole.type	A04 = System operator	Used	Used	Mandatory
createdDateTime	Date and time of document creation	Used	Used	Mandatory
period.timeInterval	The duration of the delivery period (initially 1 hour)	Used	Used	Mandatory
domain.mRID	EIC of the region	Used	Used	Conditional

294

BidTimeSeries				
marketAgreement.mRID	Identification of the offer or the need as defined in the receiving TSO submission.	Used	Used	Mandatory
marketAgreement_createdDateTime	The timestamp of when the bid was received	Not used	Not used	Conditional
priority	A sequential number indicating the priority of the bid in relation to other bids.	Not used	Not used	Conditional
resourceProvider_MarketParticipant.mRID	The balance service provider (BSP) identification.	May be used	Not used	Conditional
registeredResource.mRID	The identification of the resource used to provide the reserves.	May be used	Not used	Conditional
acquiring_Domain.mRID	For offers it corresponds to the EIC identification of the region. For needs it corresponds to the EIC identification of the receiving TSO's control area or scheduling area.	region	Receiving TSO's bidding zone or scheduling area	Mandatory
connecting_Domain.mRID	for offers it corresponds to the EIC identification of the receiving TSO's scheduling area providing the reserves. for needs it corresponds to the EIC identification of the region providing the reserves	Receiving TSO's bidding zone	region	Mandatory
auction.mRID	Identification of auction as defined in the reserve bid document.	Used	Used	Mandatory
auction.paymentTerms	A01 = Pay as bid A02 = Pay as cleared	Used when offer accepted	Used when elastic need satisfied	Conditional
businessType	B74 = Offer B75 = Need B90 = Flexible need	B74 = Offer	B75 = Need B90 = Flexible need	Mandatory
bid_Period.timeInterval	The duration of the delivery period (initially 1 hour)	Used	Used	Mandatory
quantity_Measure_Unit.name	MAW = Megawatts	Used	Used	Mandatory
currency_Unit.name	EUR = Euro	Used	Used	Conditional
price_Measurement_Unit.name	MWH = Megawatt hours	Used	Used	Conditional
energyPrice_Measurement_Unit.name	MWH = Megawatt hours	Not used	Not used	Conditional

direction	A01 = UP A02 = DOWN Refer to the price payment table for use in relation to price.	Used	Used	Mandatory
minimumActivation_Quantity.quantity	The minimum quantity that can be activated	Not used	Not used	Conditional
stepIncrement_Quantity.quantity	Not used. For needs and divisible offers the output step increment has been harmonised to 0.1 MW.	Not used	Used	Conditional
marketObjectStatus.status	A06 = available (the offer has not been activated) A10 = Ordered (i.e. common platform has requested that the TSO activate an offer) A33 = Not satisfied (i.e. The need cannot be satisfied by the common platform)	A06 = available A10 = ordered	A10 = ordered A33 = Not satisfied	Mandatory

Period				
timeInterval	A time interval of the length of the delivery period (initially 1 hour)	Used	Used	Mandatory
resolution	PT15M	Used	Used	Mandatory

295

Point				
position	Position within the time interval	Used	Used	Mandatory
quantity.quantity	Quantity offered or needed. Precision is 1 MW.	Quantity offered	Quantity needed	Mandatory
price.amount	The price for activating the product. Precision is 0.01.	Used when offer accepted	Used when need satisfied	Conditional
energy_Price.amount	For offers; The offered price. For elastic needs: The requested price. Precision is 0.01.	Used	Used when elastic need	Conditional

activated_Quantity.quantity	Quantity activated. Precision is 0.1 MW.	Quantity to be activated	Quantity for which activation has been requested	Conditional
-----------------------------	--	--------------------------	--	-------------

296

Reason (associated with time series)	Note: This class is strictly associated with the status attribute that has the value of A10=Ordered	Used when offer accepted	Used when elastic need satisfied	Conditional
code	A96 = Technical constraint B49 = Balancing	Used	Used	
text	Textual information provided by the TSO	Not used	Not used	

297 Note: Two instances of Reason will be associated with the Time Series when an offer or elastic need has been activated for balancing purposes
 298 and due to system constraints.

299

300 **5.3.7 Dependencies governing the Schedule_MarketDocument**

301 The schedule document is used by the common platform to provide all the cross border
302 information related to the nominations that been assigned. It is also used to provide the TSO
303 with the net position of its scheduling area.

304 The schedule documents containing cross-border schedules and net positions are provided
305 by the common platform per delivery period, not per business day. Each schedule document
306 contains an individual message mRID and starts with revision number "1".

307 Table 7 provides the dependencies for the schedule market document.

308 **Table 7 - Schedule market document dependency table**

		Use	XSD requirements
Schedule_MarketDocument			
mRID	Unique identification of the Schedule Document	Used	Mandatory
revisionNumber	Initial transmission shall equal "1"	Used	Mandatory
type	A30 = Cross border schedule B17 = Aggregated netted external TSO schedule document	Used	Mandatory
process.processType	A46 = Replacement reserve (RR)	Used	Mandatory
process.classificationType	A01 = Detail type	Used	Mandatory
sender_MarketParticipant.mRID	EIC of the common platform Operator: 10X1001C--00006N	Used	Mandatory
sender_MarketParticipant.marketRole.type	A35 = MOL responsible	Used	Mandatory
receiver_MarketParticipant.mRID	EIC of the Transmission System Operator	Used	Mandatory
receiver_MarketParticipant.marketRole.type	A04 = System operator A32 = Market Information Aggregator	Used	Mandatory
createdDateTime	Date and time of document creation	Used	Mandatory
schedule_Time_Period.timeInterval	The duration of the delivery period (initially 1 hour)	Used	Mandatory
domain.mRID	EIC of the region	Used	Mandatory
subject_MarketParticipant.mRID	EIC of the receiving TSO	Used	Mandatory
subject_MarketParticipant.marketRole.type	A04 = System Operator	Used	Mandatory
matching_Time_Period.timeInterval	Matching period for the schedule document	Not used	Conditional

309

TimeSeries			
mRID	The unique identification of the time series within the document	Used	Mandatory
version	The version of the time series. It must always be the same as the version of the document	Used	Mandatory
businessType	A05 = External trade total B09 = Net position	Used	Mandatory
product	8716867000016 = active power	Used	Mandatory
objectAggregation	A01 = Area	Used	Mandatory
in_Domain.mRID	EIC identification of the scheduling area where the power is being put	Used	Conditional
out_Domain.mRID	EIC identification of the scheduling area where the power is coming from	Used	Conditional
marketEvaluationPoint.mRID	Identification of a resource	Not used	Conditional
in_MarketParticipant.mRID	identification of a market participant putting the power into the area	May be used when type=B17	Conditional
out_MarketParticipant.mRID	Identification of a market participant that is taking the power from the area	May be used when type=B17	Conditional
marketAgreement.type	Identification of the type of agreement	Not used	Conditional
marketAgreement.mRID	Identification of the reserve contract	Not used	Conditional
connectingLine_RegisteredResource.mRID	Provided in case there are multiple interconnectors	May be used when type=A30	Conditional
measurement_Unit.name	MAW = Megawatts	Used	Mandatory
curveType	A01 = Sequential fixed size block	Used	Mandatory

310

Period			
timeInterval	A time interval of the length of the delivery period (initially 1 hour)	Used	Mandatory
resolution	Shall coincide with the scheduling step of the border when document type = A30: PT60M PT30M PT15M Always PT15M when document type = B17	Used	Mandatory

Point			
position	Position within the time interval	Used	Mandatory
quantity	Quantity scheduled	Used	Mandatory

Reason (associated with time series and point)		Not used	Conditional

311 Notes:

- 312 1. When Business type is B09 = Net position and TSO is exporting, the in_Domain shall
313 be populated with the region and out_Domain with the TSO's scheduling area. When
314 TSO is importing, in_Domain shall be populated with the TSO's scheduling area and
315 out_Domain with the region.
- 316 2. Information on In and Out Market Participants will be included for select scheduling
317 areas, due to local market rules for handling of reserve products: When B09 = Net
318 position out_MarketParticipant or in_MarketParticipant will be populated with the

319 party code of the BRP, depending on whether the TSO is importing or exporting
320 energy. The other attribute will be populated with the party code of the entity
321 operating the common platform.

322 3. Exceptionally and temporarily, the net position for Terna will be reported per control
323 area.

324 **5.3.8 Dependencies governing the EnergyAccount_MarketDocument**

325 The energy account document is used by the common platform to provide the invoicing
326 financial information for the reserves that have been replaced. The document is used in five
327 cases:

- 328 1. To provide the financial settlement of the net positions;
- 329 2. To provide the congestion income;
- 330 3. To provide the values for financial compensation or penalties due to the imposition of
331 constraints on interconnectors.

332 Table 8 provides the dependencies for the energy account market document.

333 **Table 8 – Energy account market document dependency table**

		Use	XSD requirements
EnergyAccount_MarketDocument			
mRID	Unique identification of the Energy Account market Document	Used	Mandatory
revisionNumber	Initial transmission shall equal "1"	Used	Mandatory
type	A12 = Imbalance report	Used	Mandatory
docStatus	A02 = Final	Used	Mandatory
process.processType	A06 = Imbalance settlement	Used	Mandatory
process.classificationType	A01 = Detail type	Used	Mandatory
sender_MarketParticipant.mRID	EIC of the common platform Operator: 10X1001C--00006N	Used	Mandatory
sender_MarketParticipant.marketRole.type	A35 = MQL responsible	Used	Mandatory
receiver_MarketParticipant.mRID	EIC of the settlement billing agent: 10X1001A1001A57U	Used	Mandatory
receiver_MarketParticipant.marketRole.type	A10 = Billing agent	Used	Mandatory
createdDateTime	Date and time of document creation	Used	Mandatory
period.timeInterval	The duration of the settlement period	Used	Mandatory
domain.mRID	EIC of the region	Used	Conditional

334

TimeSeries			
mRID	Unique identification of the time series	Used	Mandatory
businessType	A24 Total trade where the time series covers financial values; B10 = Congestion income; B77 = Financial compensation or penalties	Used	Mandatory
Product	8716867000016 = Active power	Used	Mandatory
objectAggregation	A01 = Area	Used	Mandatory
area_Domain.mRID	EIC identification of the control area	Used	Mandatory
marketParticipant.mRID	identification of TSO responsible for the area	Used	Conditional
marketAgreement.mRID	Identification of the reserve contract	Not used	Conditional
measure_Unit.name	MWH = Megawatts hours	Used	Mandatory
currency_Unit.name	EUR = Euro	Used	Conditional

335

marketEvaluationPoint.mRID	Identification of an accounting point	Not used	Conditional
----------------------------	---------------------------------------	----------	-------------

Period			
timeInterval	A time interval of the settlement period	Used	Mandatory
resolution	PT15M	Used	Mandatory

Point			
position	Position within the time interval	Used	Mandatory
in_Quantity.quantity	Quantity going into an area	Used	Mandatory
in_Quantity.quality	The quality of the quantity	Not used	Conditional
out_Quantity.quantity	Quantity going out of an area	Used	Mandatory
out_Quantity.quality	The quality of the quantity	Not used	conditional
price.amount	settlement amount. This represents the total financial value for the point in respect to the time series businessType. The value may be negative.	Used	conditional

336 Note: The in quantity and out quantity represent a netted value consequently one of the
 337 values must always be equal to zero.

Reason (associated with Point)		Not used	Conditional
---	--	-----------------	--------------------

338

339 **5.3.9 Financial amount table**

340 Table 9 indicates the domain owner that should pay the amount indicated.

341

Table 9 – Financial amount table

Price.amount	Settlement amount	>0	<0
Which party pays		TSO	common platform

342

343 **5.3.10 Dependencies governing the Balancing_MarketDocument**

344 The balancing market document covers requirements for transmission of the clearing prices
345 from the common platform to TSOs and the ENTSO-E transparency platform per imbalance
346 settlement period. The same document will also be used for transmitting to the ENTSO-E
347 transparency platform the aggregated balancing energy bids.

348 Note that due to the design of the optimisation algorithm in the common platform, prices for
349 Up and Down regulation will always be equal.

350 Table 10 provides the dependencies for the balancing market document when the common
351 sends clearing prices to the ENTSO-E transparency platform.

352 **Table 10 – Balancing market document dependency table (submission of clearing**
353 **prices to transparency platform)**

		Use	XSD requirements
Balancing_MarketDocument			
mRID	Unique identification of the balancing market Document	Used	Mandatory
revisionNumber	Initial transmission shall equal "1"	Used	Mandatory
type	A84 = activated balancing price	Used	Mandatory
process.processType	A16 = Realised	Used	Mandatory
sender_MarketParticipant.mRID	EIC of the common platform Operator: 10X1001C--00006N	Used	Mandatory
sender_MarketParticipant.marketRole.type	A35 = MOL responsible	Used	Mandatory
receiver_MarketParticipant.mRID	10X1001A1001A450 = EIC of the ENTSO-E transparency platform	Used	Mandatory
receiver_MarketParticipant.marketRole.type	A32 = Market information aggregator	Used	Mandatory
createdDateTime	Date and time of document creation	Used	Mandatory
docStatus	A01 = Intermediate A02 = Final	Not used	Conditional
controlArea.Domain.mRID	Scheduling area described by the document	Used	Conditional
allocationDecision_DateAndOrTime	Date and time when the decision on allocation was made	Not used	Optional
period.timeInterval	The duration of the delivery period covered by the document.	Used	Mandatory

TimeSeries			
mRID	Unique identification of the time series	Used	Mandatory
businessType	A98 = replacement reserve	Used	Mandatory
acquiring_Domain.mRID		Not used	Conditional
connecting_Domain.mRID		Not used	Conditional
type_MarketAgreement.type	Identification of the procurement time unit.	Not used	Conditional
standard_MarketProduct.marketProductType	Used when the reported quantities refer to standard products: A01 = Standard product	Used	Conditional
original_MarketProduct.marketProductType	Used when the reported quantities refer to specific products: A02 = Specific product A03 = Integrated scheduling process	Not used	Conditional
mktPSRType.psrType	Identification of the source type of the reserve	Not used	Conditional
flowDirection.direction	A01 = Up A02 = Down	Used	Conditional

currency_Unit.name	EUR = Euro	Used	Conditional
quantity_Measure_Unit.name	MAW = Megawatts	Not used	Conditional
price_Measure_Unit.name	MWH= Megawatt hours	Used	Conditional
curveType	A01 = Sequential fixed block	Used	Conditional
cancelledTS	If the data for a time series has been cancelled this attribute shall be specified with A01 = Yes	Not used	Conditional

354

Period			
timeInterval	A time interval equivalent to the delivery period	Used	Mandatory
resolution	PT15M	Used	Mandatory

Point			
position	Position within the time interval	Used	Mandatory
quantity	The accepted offer quantity identified for a point.	Not used	Conditional
secondaryQuantity	The activated quantity	Not used	Conditional
unavailable_Quantity.quantity	The unavailable quantity	Not used	Conditional
activation_Price.amount	The activation price for the quantity of reserve.	Used	Conditional
procurement_Price.amount	The procurement price for the quantity of reserve.	Not used	Conditional
min_Price.amount	The minimum price for the reserve	Not used	Conditional
max_Price.amount	The maximum price for the reserve	Not used	Conditional
imbalance_Price.amount	The imbalance price for the quantity of reserve.	Not used	Conditional
imbalance_Price.category	Identification whether the imbalance price is due to excess or insufficient balance.	Not used	Conditional
flowDirection.direction	A01 = Up A02 = Down	Not used	Conditional

Financial_Price (associated with Point)		Not used	Conditional
amount		Not used	Mandatory
direction		Not used	Conditional

355

356 Table 11 provides the dependencies for the balancing market document when the common
 357 platform sends the clearing prices to the TSO.

358 **Table 11 – Balancing market document dependency table (submission of clearing**
 359 **prices to TSO)**

		Use	XSD requirements
Balancing_MarketDocument			
mRID	Unique identification of the balancing market Document	Used	Mandatory

revisionNumber	Initial transmission shall equal "1"	Used	Mandatory
type	A84 = activated balancing price	Used	Mandatory
process.processType	A16 = Realised	Used	Mandatory
sender_MarketParticipant.mRID	EIC of the common platform Operator: 10X1001C--00006N	Used	Mandatory
sender_MarketParticipant.marketRole.type	A35 = MOL responsible	Used	Mandatory
receiver_MarketParticipant.mRID	EIC of the Transmission System Operator	Used	Mandatory
receiver_MarketParticipant.marketRole.type	A04 = System operator	Used	Mandatory
createdDateTime	Date and time of document creation	Used	Mandatory
docStatus	A01 = Intermediate A02 = Final	Not used	Conditional
controlArea.Domain.mRID	Scheduling area described by the document	Used	Conditional
allocationDecision_DateAndOrTime	Date and time when the decision on allocation was made	Not used	Optional
period.timeInterval	The duration of the delivery period covered by the document.	Used	Mandatory

TimeSeries			
mRID	Unique identification of the time series	Used	Mandatory
businessType	A98 = replacement reserve	Used	Mandatory
acquiring_Domain.mRID		Not used	Conditional
connecting_Domain.mRID		Not used	Conditional
type_MarketAgreement.type	Identification of the procurement time unit.	Not used	Conditional
standard_MarketProduct.marketProductType	Used when the reported quantities refer to standard products: A01 = Standard product	Used	Conditional
original_MarketProduct.marketProductType		Not used	Conditional
mktPSRType.psrType	Identification of the source type of the reserve	Not used	Conditional
flowDirection.direction	A03 = Up and Down	Used	Conditional
currency_Unit.name	EUR = Euro	Used	Conditional
quantity_Measure_Unit.name	MAW = Megawatts	Not used	Conditional
price_Measure_Unit.name	MWH= Megawatt hours	Used	Conditional
curveType	A01 = Sequential fixed block	Used	Conditional
cancelledTS	If the data for a time series has been cancelled this attribute shall be specified with A01 = Yes	Not used	Conditional

Period			

timeInterval	A time interval equivalent to the delivery period	Used	Mandatory
resolution	PT15M	Used	Mandatory

Point			
position	Position within the time interval	Used	Mandatory
quantity	The accepted offer quantity identified for a point.	Not used	Conditional
secondaryQuantity	The activated quantity	Not used	Conditional
unavailable_Quantity.quantity	The unavailable quantity	Not used	Conditional
activation_Price.amount	The activation price for the quantity of reserve.	Used	Conditional
procurement_Price.amount	The procurement price for the quantity of reserve.	Not used	Conditional
min_Price.amount	The minimum price for the reserve	Not used	Conditional
max_Price.amount	The maximum price for the reserve	Not used	Conditional
imbalance_Price.amount	The imbalance price for the quantity of reserve.	Not used	Conditional
imbalance_Price.category	Identification of whether the imbalance price is in excess or insufficient balance.	Not used	Conditional
flowDirection.direction	A01 = Up A02 = Down	Not used	Conditional

Financial_Price (associated with Point)		Not used	Conditional
amount		Not used	Mandatory
direction		Not used	Conditional

361
362 Table 12 provides the dependencies for the balancing market document when the common
363 platform sends aggregated balancing energy bids to the ENTSO-E transparency platform.

364 **Table 12 – Balancing market document dependency table (submission of aggregated**
365 **bids to transparency platform)**

		Use	XSD requirements
Balancing_MarketDocument			
mRID	Unique identification of the balancing market Document	Used	Mandatory
revisionNumber	Initial transmission shall equal "1"	Used	Mandatory
type	A24 = Bid document	Used	Mandatory
process.processType	A46 = Replacement reserve (RR)	Used	Mandatory
sender_MarketParticipant.mRID	EIC of the common platform Operator: 10X1001C--00006N	Used	Mandatory
sender_MarketParticipant.marketRole.type	A35 = MOL responsible	Used	Mandatory
receiver_MarketParticipant.mRID	10X1001A1001A450 = EIC of the ENTSO-E transparency platform	Used	Mandatory
receiver_MarketParticipant.marketRole.type	A32 = Market information aggregator	Used	Mandatory
createdDateTime	Date and time of document creation	Used	Mandatory
docStatus	A01 = Intermediate A02 = Final	Not used	Conditional
controlArea.Domain.mRID	Scheduling area described by the document	Used	Conditional

allocationDecision_DateAndORTime	Date and time when the decision on allocation was made	Not used	Optional
period.timeInterval	The duration of the delivery period covered by the document	Used	Mandatory

TimeSeries			
mRID	Unique identification of the time series	Used	Mandatory
businessType	A14 = Aggregated energy data	Used	Mandatory
acquiring_Domain.mRID		Not used	Conditional
connecting_Domain.mRID		Not used	Conditional
type_MarketAgreement.type	Identification of the procurement time unit.	Not used	Conditional
standard_MarketProduct.marketProductType	Used when the reported quantities refer to standard products: A01 = Standard product	Used	Conditional
original_MarketProduct.marketProductType	Used when the reported quantities refer to specific products: A02 = Specific product A03 = Integrated scheduling process	Not used	Conditional
mktPSRType.psrType	Identification of the source type of the reserve	Not used	Conditional
flowDirection.direction	A01 = Up A02 = Down	Used	Conditional
currency_Unit.name		Not used	Conditional
quantity_Measure_Unit.name	MAW = Megawatts	Used	Conditional
price_Measure_Unit.name		Not used	Conditional
curveType	A01 = Sequential fixed block	Used	Conditional
cancelledTS	If the data for a time series has been cancelled this attribute shall be specified with A01 = Yes	Not used	Conditional

366

Period			
timeInterval	A time interval equal to the delivery period	Used	Mandatory
resolution	PT15M	Used	Mandatory

Point			
position	Position within the time interval	Used	Mandatory
quantity	The offered quantity	Used	Conditional
secondaryQuantity	The activated quantity	Used	Conditional
unavailable_Quantity	The unavailable quantity	Used	Conditional
activation_Price.amount	The activation price for the quantity of reserve.	Not used	Conditional
procurement_Price.amount	The procurement price for the quantity of reserve.	Not used	Conditional
min_Price.amount	The minimum price for the reserve	Not used	Conditional
max_Price.amount	The maximum price for the reserve	Not used	Conditional
imbalance_Price.amount	The imbalance price for the quantity of reserve.	Not used	Conditional
imbalance_Price.category	Identification whether the imbalance price is due to excess or insufficient balance.	Not used	Conditional

flowDirection.direction	A01 = Up A02 = Down	Not used	Conditional
-------------------------	------------------------	----------	-------------

Financial_Price (associated with Point)		Not used	Conditional
amount		Not used	Mandatory
direction		Not used	Conditional

367

368

369 **5.3.11 Dependencies governing the Reporting_MarketDocument**

370 The reporting market document covers requirements for transmission by the common
 371 platform to the ENTSO-E verification platform of the aggregated netted external TSO
 372 schedule for the net balancing position between the common platform and the TSO's
 373 scheduling area. It should be noted that this schedule only describes the outcome of the RR
 374 process.

375 There will be separate virtual scheduling areas corresponding to the regions for RR.

376 Table 13 provides the dependencies for the reporting market document.

377 **Table 13 – Reporting market document dependency table**

		Used	XSD Requirements
Reporting_MarketDocument			
mRID	Unique identification of the reporting market Document	Used	Mandatory
revisionNumber	Initial transmission shall equal "1"	Used	Mandatory
type	B17 = Aggregated netted external TSO schedule document	Used	Mandatory
process.processType	A18 = Total intraday	Used	Mandatory
sender_MarketParticipant.mRID	EIC of the common platform Operator: 10X1001C--00006N	Used	Mandatory
sender_MarketParticipant.marketRole.type	A35 = MOL responsible	Used	Mandatory
receiver_MarketParticipant.mRID	10V000000000009D V-code of the verification platform	Used	Mandatory
receiver_MarketParticipant.marketRole.type	A32 = Market information aggregator	Used	Mandatory
createdDateTime	Date and time of document creation. Expressed in UTC	Used	Mandatory
time_Period.timeInterval	The period covered by the document expressed in UTC. The period must cover a complete scheduling day.	Used	Mandatory
domain.mRID / codingScheme	The common platform's virtual scheduling area identified with an EIC Y code. codingScheme = A01	Used	Mandatory
subject_Domain.mRID / codingScheme	The common platform's virtual scheduling area identified with an EIC Y code. codingScheme = A01	Used	Mandatory

378

TimeSeries			
mRID	Unique identification of the time series.	Used	Mandatory
businessType	B62 = Aggregated netted external TSO schedule	Used	Mandatory
product	8716867000016 = Active Power.	Used	Mandatory
in_Domain.mRID / codingScheme	A scheduling area where the product is being delivered identified with an EIC Y code. codingScheme = A01.	Used	Mandatory
out_Domain.mRID / codingScheme	A scheduling area where the product is being extracted identified with an EIC Y code. codingScheme = A01.	Used	Mandatory
connectingLine_RegisteredResource.mRID	Required if DC link or controllable AC link	Not used	Conditional
quantity_Measure_Unit.name	MAW = Mega watts	Used	Mandatory
curveType	A03 = Variable block	Used	Mandatory
Period			
timeInterval	The start and end time of the period expressed in UTC.	Used	Mandatory
resolution	PT1M = 1 minute	Used	Mandatory
Point			
position	The relative position of the point in relation to the start time interval.	Used	Mandatory
quantity	The quantity representing the net position.	Used	Mandatory

379 Note 1: The in_Domain or the out_Domain must identify the region, also referred to as the
 380 virtual scheduling area. The other domain shall be equivalent to a TSO's scheduling area.

381 Note 2: There is a time series for both directions, one of the directions must equal zero.

382 Note 3: No references to connecting lines are included since net positions are reported.

383 Note 4: Exceptionally and temporarily, the net position for Terna will be reported per control
 384 area.

385 **6 Contextual and assembly models**

386 **6.1 Capacity market document**

387 The contextual and assembly models for the capacity market document shall be based on
388 the equivalent models as defined in urn:iec62325.351:tc57wg16:451-
389 3:capacitydocument:8:0.

390 **6.2 HVDCLink market document**

391 The contextual and assembly models for the HVDC link market document shall be based on
392 the equivalent models as defined in urn:iec62325.351:tc57wg16:451-
393 8:hvdclinkdocument:1:0.

394 **6.3 Reserve bid market document**

395 The contextual and assembly models for the reserve bid market document shall be based on
396 the equivalent models as defined in urn:iec62325.351:tc57wg16:451-
397 7:reservebiddocument:7:1.

398 **6.4 Merit order list market document**

399 The contextual and assembly models for the merit order list market document shall be based
400 on the equivalent models as defined in urn:iec62325.351:tc57wg16:451-7:moldocument:7:2
401 (TO BE CONFIRMED, pending schema change).

402 **6.5 Schedule market document**

403 The contextual and assembly models for the schedule market document shall be based on
404 the equivalent models as defined in urn:iec62325.351:tc57wg16:451-
405 2:scheduledocument:5:1.

406 **6.6 Energy account market document**

407 The contextual and assembly models for the energy account market document shall be
408 based on the equivalent models as defined in urn:iec62325.351:tc57wg16:451-
409 4:energyaccountdocument:4:0.

410 **6.7 Balancing market document**

411 The contextual and assembly models for the balancing market document shall be based on
412 the equivalent models as defined in urn:iec62325.351:tc57wg16:451-
413 6:balancingdocument:4:0.

414 **6.8 Reporting market document**

415 The contextual and assembly models for the reporting market document shall be based on
416 the equivalent models as defined in urn:iec62325.351:tc57wg16:451-
417 n:reportingdocument:2:0.

418 **6.9 Acknowledgement document**

419 The contextual and assembly models for the acknowledgement document shall be based on
420 the equivalent models as defined in urn:iec62325.351:tc57wg16:451-
421 1:acknowledgementdocument:8:0.

422 **6.10 Problem statement document**

423 The contextual and assembly models for the problem statement document shall be based on
424 the equivalent models as defined in urn:iec62325.351:tc57wg16:451-
425 5:problemdocument:3:0.

426

427 **7 XML schema**

428 All XML schemas for the replacement reserve process are available for download from the
429 ENTSO-E website.

430