



European Network of  
Transmission System Operators  
for Electricity

---

# SENSITIVITY MATRIX PROFILE SPECIFICATION

---

2023-05-10

---

APPROVED DOCUMENT  
VERSION 2.2

## 1 Copyright notice:

2 **Copyright © ENTSO-E. All Rights Reserved.**

3 This document and its whole translations may be copied and furnished to others, and derivative  
4 works that comment on or otherwise explain it or assist in its implementation may be prepared,  
5 copied, published and distributed, in whole or in part, without restriction of any kind, provided  
6 that the above copyright notice and this paragraph are included on all such copies and  
7 derivative works. However, this document itself may not be modified in any way, except for  
8 literal and whole translation into languages other than English and under all circumstances, the  
9 copyright notice or references to ENTSO-E may not be removed.

10 This document and the information contained herein is provided on an "as is" basis.

11 **ENTSO-E DISCLAIMS ALL WARRANTIES, EXPRESS OR IMPLIED, INCLUDING BUT NOT**  
12 **LIMITED TO ANY WARRANTY THAT THE USE OF THE INFORMATION HEREIN WILL NOT**  
13 **INFRINGE ANY RIGHTS OR ANY IMPLIED WARRANTIES OF MERCHANTABILITY OR**  
14 **FITNESS FOR A PARTICULAR PURPOSE.**

15 **This document is maintained by the ENTSO-E CIM WG. Comments or remarks are to be**  
16 **provided at [cim@entsoe.eu](mailto:cim@entsoe.eu)**

17 **NOTE CONCERNING WORDING USED IN THIS DOCUMENT**

18 The force of the following words is modified by the requirement level of the document in which  
19 they are used.

- 20 • SHALL: This word, or the terms "REQUIRED" or "MUST", means that the definition is an  
21 absolute requirement of the specification.
- 22 • SHALL NOT: This phrase, or the phrase "MUST NOT", means that the definition is an  
23 absolute prohibition of the specification.
- 24 • SHOULD: This word, or the adjective "RECOMMENDED", means that there may exist valid  
25 reasons in particular circumstances to ignore a particular item, but the full implications must  
26 be understood and carefully weighed before choosing a different course.
- 27 • SHOULD NOT: This phrase, or the phrase "NOT RECOMMENDED", means that there may  
28 exist valid reasons in particular circumstances when the particular behaviour is acceptable  
29 or even useful, but the full implications should be understood and the case carefully weighed  
30 before implementing any behaviour described with this label.
- 31 • MAY: This word, or the adjective "OPTIONAL", means that an item is truly optional.

32

33

## Revision History

Version	Release	Date	Paragraph	Comments
2	1	2022-09-21		SOC approved.
2	2	2023-03-24		For review.
2	2	2023-05-10		ICTC approved.

34	<b>CONTENTS</b>		
35	Copyright notice:.....		2
36	Revision History.....		3
37	CONTENTS .....		4
38	1 Introduction .....		6
39	2 Application profile specification .....		6
40	2.1 Version information .....		6
41	2.2 Constraints naming convention .....		6
42	2.3 Profile constraints .....		7
43	2.4 Metadata.....		9
44	2.4.1 Constraints .....		9
45	2.4.2 Reference metadata .....		9
46	3 Detailed Profile Specification .....		9
47	3.1 General.....		9
48	3.2 (abstract,NC) AssessedElement root class.....		10
49	3.3 (abstract) Contingency root class .....		10
50	3.4 (NC) ControllableQuantity root class .....		10
51	3.5 (abstract,NC) GridStateAlteration root class.....		11
52	3.6 (abstract) IdentifiedObject root class .....		11
53	3.7 (NC) ObservableQuantity root class .....		11
54	3.8 (abstract,NC) RemedialAction root class .....		12
55	3.9 (NC) SensitivityFactor root class .....		12
56	3.10 (NC) SensitivityMatrix .....		12
57	3.11 (NC) ObservableQuantityKind enumeration .....		13
58	3.12 (NC) SensitivityMatrixKind enumeration .....		13
59	3.13 Float primitive .....		13
60	3.14 String primitive.....		13
61	Annex A (informative): Sample data .....		14
62	A.1 General.....		14
63	A.2 Sample instance data.....		14
64			
65	<b>List of figures</b>		
66	Figure 1 – Class diagram SensitivityMatrixProfile::SensitivityMatrixProfile .....		10
67			
68	<b>List of tables</b>		
69	Table 1 – Attributes of SensitivityMatrixProfile::ControllableQuantity .....		10
70	Table 2 – Association ends of SensitivityMatrixProfile::ControllableQuantity with other		
71	classes .....		11
72	Table 3 – Attributes of SensitivityMatrixProfile::IdentifiedObject .....		11
73	Table 4 – Attributes of SensitivityMatrixProfile::ObservableQuantity .....		11
74	Table 5 – Association ends of SensitivityMatrixProfile::ObservableQuantity with other		
75	classes .....		12

76	Table 6 – Attributes of SensitivityMatrixProfile::SensitivityFactor .....	12
77	Table 7 – Association ends of SensitivityMatrixProfile::SensitivityFactor with other	
78	classes .....	12
79	Table 8 – Attributes of SensitivityMatrixProfile::SensitivityMatrix .....	12
80	Table 9 – Literals of SensitivityMatrixProfile::ObservableQuantityKind .....	13
81	Table 10 – Literals of SensitivityMatrixProfile::SensitivityMatrixKind .....	13
82		

## 83 1 Introduction

84 The sensitivity matrix profile is a profile to exchange sensitivity matrices that are needed within  
85 the process.

86 The sensitivity matrix allows to define different kind of sensitivity matrix like Remedial Action  
87 Influence Factor or PTFD amongst others.

## 88 2 Application profile specification

### 89 2.1 Version information

90 The content is generated from UML model file CIM100\_CGMES31v01\_501-  
91 20v02\_NC22v95\_MM10v01.eap.

92 This edition is based on the IEC 61970 UML version 'IEC61970CIM17v40', dated '2020-08-24'.

93 - Title: Sensitivity Matrix Vocabulary

94 - Keyword: SM

95 - Description: This vocabulary is describing the sensitivity matrix.

96 - Version IRI: <http://entsoe.eu/ns/CIM/SensitivityMatrix-EU/2.2>

97 - Version info: 2.2.0

98 - Prior version: <http://entsoe.eu/ns/CIM/SensitivityMatrix-EU/2.1>

99 - Conforms to: urn:iso:std:iec:61970-600-2:ed-1|urn:iso:std:iec:61970-301:ed-  
100 7:amd1|file://iec61970cim17v40\_iec61968cim13v13a\_iec62325cim03v17a.eap|urn:iso:  
101 std:iec:61970-401:draft:ed-1|urn:iso:std:iec:61970-501:draft:ed-2|file://CGMES-  
102 30v25\_501-20v01.eap

103 - Identifier: urn:uuid:d89a8510-528b-49a9-81f1-c51be51caa6f

104

### 105 2.2 Constraints naming convention

106 The naming of the rules shall not be used for machine processing. The rule names are just a  
107 string. The naming convention of the constraints is as follows.

108 "{rule.Type}:{rule.Standard}:{rule.Profile}:{rule.Property}:{rule.Name}"

109 where

110 rule.Type: C – for constraint; R – for requirement

111 rule.Standard: the number of the standard e.g. 301 for 61970-301, 456 for 61970-456, 13 for  
112 61968-13. 61970-600 specific constraints refer to 600 although they are related to one or  
113 combination of the 61970-450 series profiles. For NC profiles, NC is used.

114 rule.Profile: the abbreviation of the profile, e.g. TP for Topology profile. If set to "ALL" the  
115 constraint is applicable to all IEC 61970-600 profiles.

116 rule.Property: for UML classes, the name of the class, for attributes and associations, the name  
117 of the class and attribute or association end, e.g. EnergyConsumer, IdentifiedObject.name, etc.  
118 If set to "NA" the property is not applicable to a specific UML element.

119 rule.Name: the name of the rule. It is unique for the same property.

120 Example: C:600:ALL:IdentifiedObject.name.stringLength

### 121 **2.3 Profile constraints**

122 This clause defines requirements and constraints that shall be fulfilled by applications that  
123 conform to this document.

124 This document is the master for rules and constraints tagged "NC". For the sake of self-  
125 containment, the list below also includes a copy of the relevant rules from IEC 61970-452,  
126 tagged "452".

- 127 • C:452:ALL:NA:datatypes

128 According to 61970-501, datatypes are not exchanged in the instance data. The  
129 UnitMultiplier is 1 in cases none value is specified in the profile.

- 130 • R:452:ALL:NA:exchange

131 Optional and required attributes and associations must be imported and exported if they  
132 are in the model file prior to import.

- 133 • R:452:ALL:NA:exchange1

134 If an optional attribute does not exist in the imported file, it does not have to be exported  
135 in case exactly the same data set is exported, i.e. the tool is not obliged to automatically  
136 provide this attribute. If the export is resulting from an action by the user performed after  
137 the import, e.g. data processing or model update the export can contain optional  
138 attributes.

- 139 • R:452:ALL:NA:exchange2

140 In most of the profiles the selection of optional and required attributes is made so as to  
141 ensure a minimum set of required attributes without which the exchange does not fulfil  
142 its basic purpose. Business processes governing different exchanges can require  
143 mandatory exchange of certain optional attributes or associations. Optional and required  
144 attributes and associations shall therefore be supported by applications which claim  
145 conformance with certain functionalities of the IEC 61970-452. This provides flexibility  
146 for the business processes to adapt to different business requirements and base the  
147 exchanges on IEC 61970-452 compliant applications.

- 148 • R:452:ALL:NA:exchange3

149 An exporter may, at his or her discretion, produce a serialization containing additional  
150 class data described by the CIM Schema but not required by this document provided  
151 these data adhere to the conventions established in Clause 5.

- 152 • R:452:ALL:NA:exchange4

153 From the standpoint of the model import used by a data recipient, the document  
154 describes a subset of the CIM that importing software shall be able to interpret in order  
155 to import exported models. Data providers are free to exceed the minimum requirements  
156 described herein as long as their resulting data files are compliant with the CIM Schema  
157 and the conventions established in Clause 5. The document, therefore, describes  
158 additional classes and class data that, although not required, exporters will, in all  
159 likelihood, choose to include in their data files. The additional classes and data are  
160 labelled as required (cardinality 1..1) or as optional (cardinality 0..1) to distinguish them  
161 from their required counterparts. Please note, however, that data importers could  
162 potentially receive data containing instances of any and all classes described by the  
163 CIM Schema.

- 164
- R:452:ALL:NA:cardinality
- 165 The cardinality defined in the CIM model shall be followed, unless a more restrictive  
166 cardinality is explicitly defined in this document. For instance, the cardinality on the  
167 association between VoltageLevel and BaseVoltage indicates that a VoltageLevel shall  
168 be associated with one and only one BaseVoltage, but a BaseVoltage can be associated  
169 with zero to many VoltageLevels.
- 170
- R:452:ALL:NA:associations
- 171 Associations between classes referenced in this document and classes not referenced  
172 here are not required regardless of cardinality.
- 173
- R:452:ALL:IdentifiedObject.name:rule
- 174 The attribute “name” inherited by many classes from the abstract class IdentifiedObject  
175 is not required to be unique. It must be a human readable identifier without additional  
176 embedded information that would need to be parsed. The attribute is used for purposes  
177 such as User Interface and data exchange debugging. The MRID defined in the data  
178 exchange format is the only unique and persistent identifier used for this data exchange.  
179 The attribute IdentifiedObject.name is, however, always required for CoreEquipment  
180 profile and Short Circuit profile.
- 181
- R:452:ALL:IdentifiedObject.description:rule
- 182 The attribute “description” inherited by many classes from the abstract class  
183 IdentifiedObject must contain human readable text without additional embedded  
184 information that would need to be parsed.
- 185
- R:452:ALL:NA:uniqueIdentifier
- 186 All IdentifiedObject-s shall have a persistent and globally unique identifier (Master  
187 Resource Identifier - mRID).
- 188
- R:452:ALL:NA:unitMultiplier
- 189 For exchange of attributes defined using CIM Data Types (ActivePower, Susceptance,  
190 etc.) a unit multiplier of 1 is used if the UnitMultiplier specified in this document is “none”.
- 191
- C:452:ALL:IdentifiedObject.name:stringLength
- 192 The string IdentifiedObject.name has a maximum of 128 characters.
- 193
- C:452:ALL:IdentifiedObject.description:stringLength
- 194 The string IdentifiedObject.description is maximum 256 characters.
- 195
- C:452:ALL:NA:float
- 196 An attribute that is defined as float (e.g. has a type Float or a type which is a Datatype  
197 with .value attribute of type Float) shall support ISO/IEC 60559:2020 for floating-point  
198 arithmetic using single precision floating point. A single precision float supports 7  
199 significant digits where the significant digits are described as an integer, or a decimal  
200 number with 6 decimal digits. Two float values are equal when the significant with 7  
201 digits are identical, e.g. 1234567 is equal 1.234567E6 and so are 1.2345678 and  
202 1.234567E0.
- 203
- R:NC:ALL:Region:reference



204 The reference to the Region is normally a reference to the capacity calculation region,  
205 which is identified by “Y” EIC code of the capacity calculation region.

## 206 **2.4 Metadata**

207 ENTSO-E agreed to extend the header and metadata definitions by IEC 61970-552 Ed2. This  
208 new header definitions rely on W3C recommendations which are used worldwide and are  
209 positively recognised by the European Commission. The new definitions of the header mainly  
210 use Provenance ontology (PROV-O), Time Ontology and Data Catalog Vocabulary (DCAT). The  
211 global new header applicable for this profile is included in the metadata and document header  
212 specification document.

213 The header vocabulary contains all attributes defined in IEC 61970-552. This is done only for  
214 the purpose of having one vocabulary for header and to ensure transition for data exchanges  
215 that are using IEC 61970-552:2016 header. This profile does not use IEC 61970-552:2016  
216 header attributes and relies only on the extended attributes.

### 217 **2.4.1 Constraints**

218 The identification of the constraints related to the metadata follows the same convention for  
219 naming of the constraints as for profile constraints.

- 220 • R:NC:ALL:wasAttributedTo:usage

221 The prov:wasAttributedTo should normally be the “X” EIC code of the actor (prov:Agent).

222

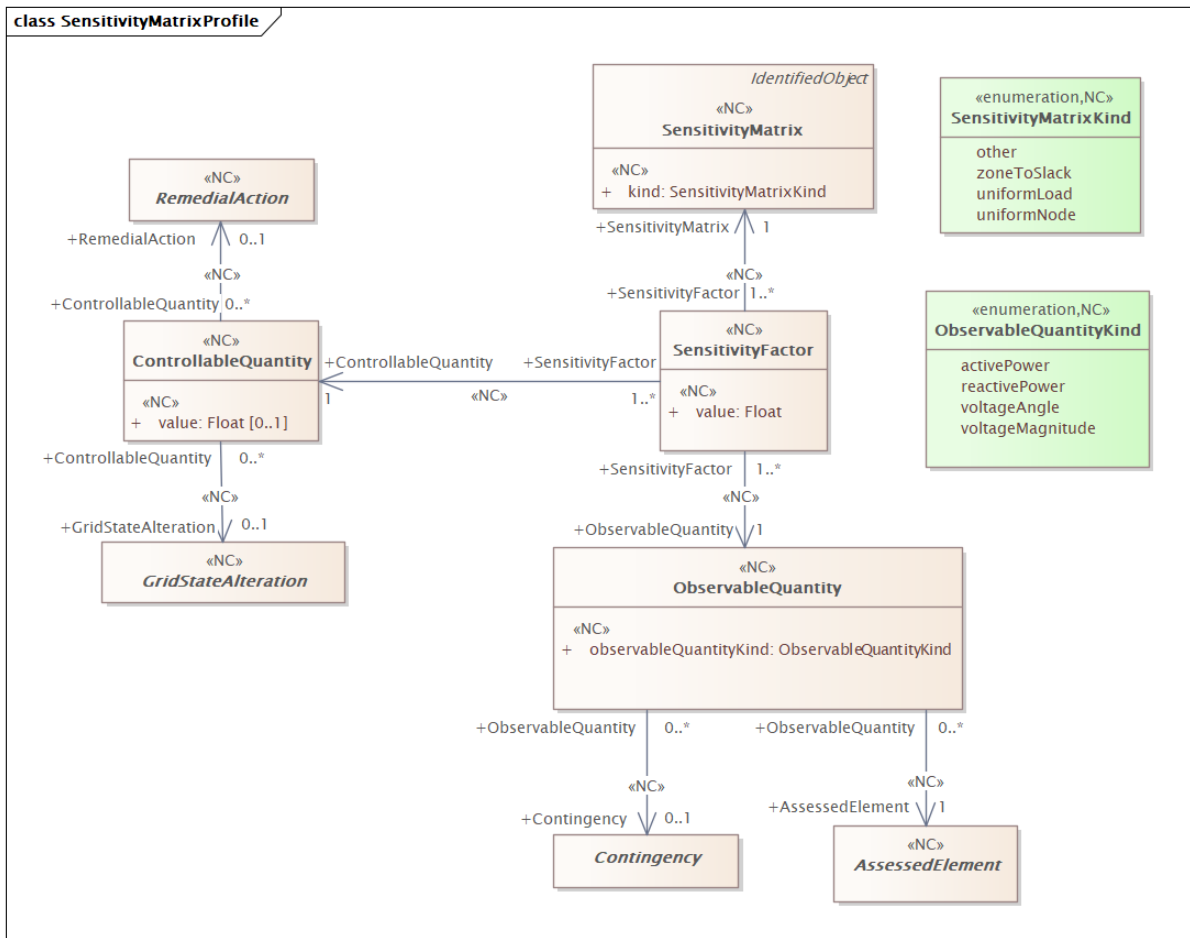
### 223 **2.4.2 Reference metadata**

224 The header defined for this profile requires availability of a set of reference metadata. For  
225 instance, the attribute prov:wasGeneratedBy requires a reference to an activity which produced  
226 the model or the related process. The activities are defined as reference metadata and their  
227 identifiers are referenced from the header to enable the receiving entity to retrieve the “static”  
228 (reference) information that is not modified frequently. This approach imposes a requirement  
229 that both the sending entity and the receiving entity have access to a unique version of the  
230 reference metadata. Therefore, each business process shall define which reference metadata  
231 is used and where it is located.

## 232 **3 Detailed Profile Specification**

### 233 **3.1 General**

234 This package contains sensitivity matrix profile.



235

236 **Figure 1 – Class diagram SensitivityMatrixProfile::SensitivityMatrixProfile**

237 Figure 1: The diagram shows classes related to the sensitivity matrix profile.

238 **3.2 (abstract,NC) AssessedElement root class**

239 Assessed element is a network element for which the electrical state is evaluated in the regional  
240 or cross-regional process and which value is expected to fulfil regional rules function of the  
241 operational security limits.

242 The measurements and limits are as defined in the steady state hypothesis.

243 **3.3 (abstract) Contingency root class**

244 An event threatening system reliability, consisting of one or more contingency elements.

245 **3.4 (NC) ControllableQuantity root class**

246 Controllable quantity is a set point quantity on a grid state alteration or on a remedial action.

247 Table 1 shows all attributes of ControllableQuantity.

248 **Table 1 – Attributes of SensitivityMatrixProfile::ControllableQuantity**

name	mult	type	description
value	0..1	Float	(NC) The value of the change applied to the grid state alteration or remedial action. In the case of multiple changes or non-quantifiable changes (e.g. Topology changes) the value needs to represent the suitable value that makes the derivable value given in the observable quantity for the purpose of the calculation of the sensitivity factor. The value can be integer, float

name	mult	type	description
			or boolean. In case of boolean 1 equals true and 0 equals false.

249

250

Table 2 shows all association ends of ControllableQuantity with other classes.

251

**Table 2 – Association ends of SensitivityMatrixProfile::ControllableQuantity with other classes**

252

mult from	name	mult to	type	description
0..*	RemedialAction	0..1	<a href="#">RemedialAction</a>	(NC) Remedial action which is associated with the controllable quantity.
0..*	GridStateAlteration	0..1	<a href="#">GridStateAlteration</a>	(NC) The grid state alteration for this controllable quantity.

253

254

### 3.5 (abstract,NC) GridStateAlteration root class

255

Grid state alteration is a change of values describing state (operating point) of one element in the grid model compared to the base case.

256

257

### 3.6 (abstract) IdentifiedObject root class

258

This is a root class to provide common identification for all classes needing identification and naming attributes.

259

260

Table 3 shows all attributes of IdentifiedObject.

261

**Table 3 – Attributes of SensitivityMatrixProfile::IdentifiedObject**

name	mult	type	description
description	0..1	<a href="#">String</a>	The description is a free human readable text describing or naming the object. It may be non unique and may not correlate to a naming hierarchy.
mRID	1..1	<a href="#">String</a>	Master resource identifier issued by a model authority. The mRID is unique within an exchange context. Global uniqueness is easily achieved by using a UUID, as specified in RFC 4122, for the mRID. The use of UUID is strongly recommended.  For CIMXML data files in RDF syntax conforming to IEC 61970-552, the mRID is mapped to rdf:ID or rdf:about attributes that identify CIM object elements.
name	0..1	<a href="#">String</a>	The name is any free human readable and possibly non unique text naming the object.

262

263

### 3.7 (NC) ObservableQuantity root class

264

Observable quantity is an electrical quantity on an assessed element or an assessed element with contingency.

265

266

Table 4 shows all attributes of ObservableQuantity.

267

**Table 4 – Attributes of SensitivityMatrixProfile::ObservableQuantity**

name	mult	type	description
observableQuantityKind	1..1	<a href="#">ObservableQuantityKind</a>	(NC) Kind of observable quantity.

268

269

Table 5 shows all association ends of ObservableQuantity with other classes.

270 **Table 5 – Association ends of SensitivityMatrixProfile::ObservableQuantity with other**  
271 **classes**

mult from	name	mult to	type	description
0..*	AssessedElement	1..1	<a href="#">AssessedElement</a>	(NC) The assessed element with contingency associated with this observable quantity.
0..*	Contingency	0..1	<a href="#">Contingency</a>	(NC) The contingency associated with this observable quantity.

272

### 273 3.8 (abstract,NC) RemedialAction root class

274 Remedial action describes one or more actions that can be performed on a given power system  
275 model situation to eliminate one or more identified breaches of constraints. The remedial action  
276 can be costly, and have a cost characteristic, or non costly.

### 277 3.9 (NC) SensitivityFactor root class

278 The sensitivity factor which represents the sensitivity between observable and controllable  
279 elements.

280 Table 6 shows all attributes of SensitivityFactor.

281 **Table 6 – Attributes of SensitivityMatrixProfile::SensitivityFactor**

name	mult	type	description
value	1..1	<a href="#">Float</a>	(NC) The value of the sensitivity factor.

282

283 Table 7 shows all association ends of SensitivityFactor with other classes.

284 **Table 7 – Association ends of SensitivityMatrixProfile::SensitivityFactor with other**  
285 **classes**

mult from	name	mult to	type	description
1..*	ControllableQuantity	1..1	<a href="#">ControllableQuantity</a>	(NC) The controllable quantity for this sensitivity factor.
1..*	ObservableQuantity	1..1	<a href="#">ObservableQuantity</a>	(NC) The observable quantity for this sensitivity factor.
1..*	SensitivityMatrix	1..1	<a href="#">SensitivityMatrix</a>	(NC) The sensitivity matrix which contains this sensitivity factor.

286

### 287 3.10 (NC) SensitivityMatrix

288 Inheritance path = [IdentifiedObject](#)

289 The sensitivity matrix which represents the sensitivity factors between observable and  
290 controllable elements.

291 Table 8 shows all attributes of SensitivityMatrix.

292 **Table 8 – Attributes of SensitivityMatrixProfile::SensitivityMatrix**

name	mult	type	description
kind	1..1	<a href="#">SensitivityMatrixKind</a>	(NC) The kind of sensitivity matrix.
description	0..1	<a href="#">String</a>	inherited from: <a href="#">IdentifiedObject</a>
mRID	1..1	<a href="#">String</a>	inherited from: <a href="#">IdentifiedObject</a>
name	0..1	<a href="#">String</a>	inherited from: <a href="#">IdentifiedObject</a>

293

294 **3.11 (NC) ObservableQuantityKind enumeration**

295 Kind of observable quantity.

296 Table 9 shows all literals of ObservableQuantityKind.

297 **Table 9 – Literals of SensitivityMatrixProfile::ObservableQuantityKind**

literal	value	description
activePower		The observable quantity is the active power.
reactivePower		The observable quantity is the reactive power.
voltageAngle		The observable quantity is the angle of terminal voltage.
voltageMagnitude		The observable quantity is the magnitude of terminal voltage.

298

299 **3.12 (NC) SensitivityMatrixKind enumeration**

300 Kinds of sensitivity matrix.

301 Table 10 shows all literals of SensitivityMatrixKind.

302 **Table 10 – Literals of SensitivityMatrixProfile::SensitivityMatrixKind**

literal	value	description
other		Other kind of sensitivity matrix.
zoneToSlack		Zone to slack kind of sensitivity matrix.
uniformLoad		Uniform load matrix.
uniformNode		Uniform node matrix.

303

304 **3.13 Float primitive**

305 A floating point number. The range is unspecified and not limited.

306 **3.14 String primitive**307 A string consisting of a sequence of characters. The character encoding is UTF-8. The string  
308 length is unspecified and unlimited.

309

310

## 311 **Annex A (informative): Sample data**

### 312 **A.1 General**

313 This Annex is designed to illustrate the profile by using fragments of sample data. It is not meant  
314 to be a complete set of examples covering all possibilities of using the profile. Defining a  
315 complete set of test data is considered a separate activity to be performed for the purpose of  
316 setting up interoperability testing and conformity related to this profile.

### 317 **A.2 Sample instance data**

318 Test data files are available in the CIM EG SharePoint.